

Colo Cons Com

CERTIFICATE OF SURVEY

for

Patrick A. Doheny
Washington County, Colorado

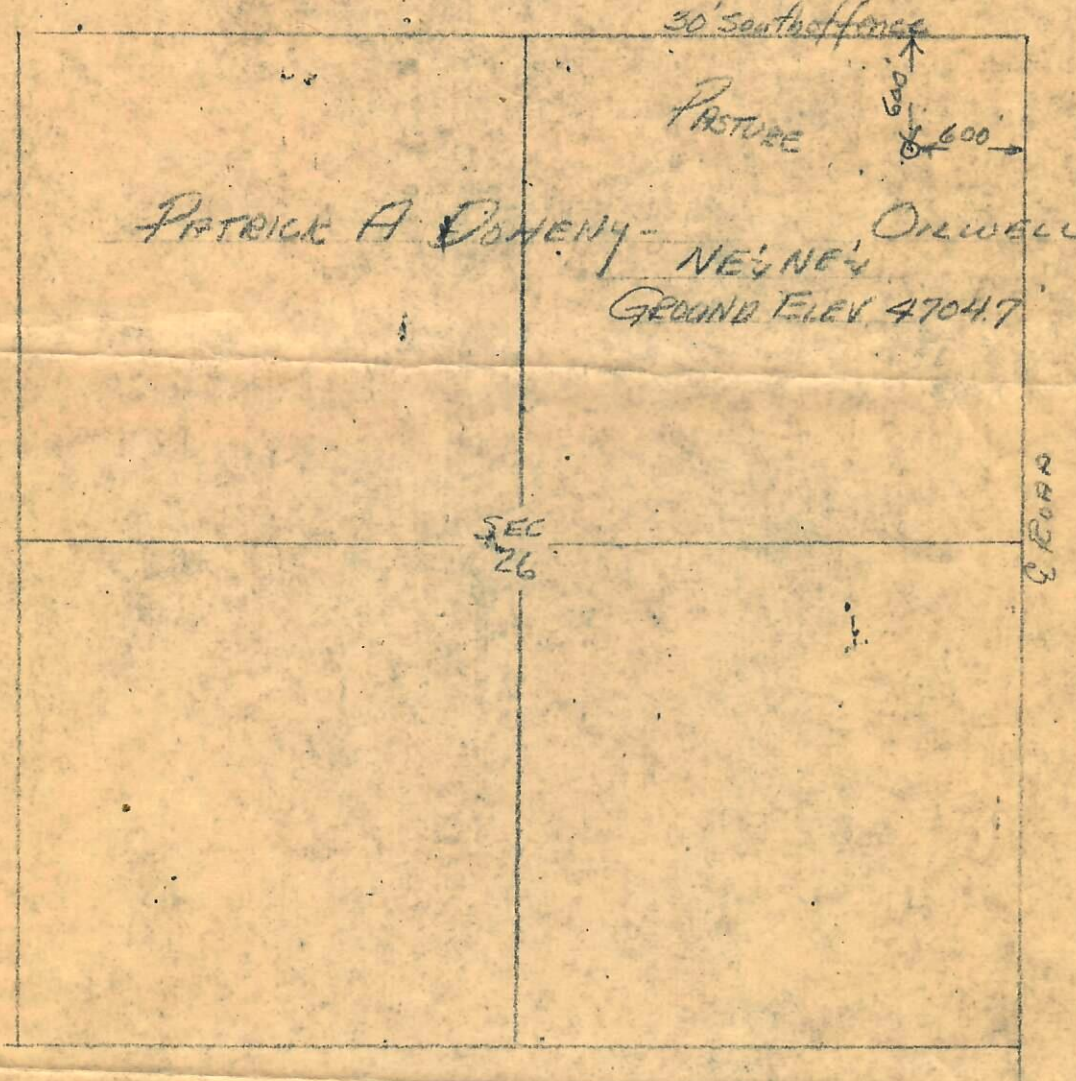


RECEIVED

APR 22 1971

COLORADO OIL & GAS CONS. COMM.

SCANNED T2N R53W 6PM



I hereby certify that the above plat is an accurate representation of a correct survey showing the location of Partrick A. Doheny-
#1B Walton ~~NE 1/4~~ Gilwell in NE 1/4 NE 1/4 Sec. 26 T2N R53W 6PM (600 feet west of east line, 600 feet south of north line). The elevation of the ground at the stake 4704.7 feet above sea level from U.S.C.&G. Bench Mark.

Fort Morgan, Colorado
April 18, 1971

Loeal J. Osborne
Registered Professional Engineer
State of Colorado

71-265