

Inspection Photos

Location Name: TEP ROCKY MOUNTAIN LLC SPECIALTY # 3 Pad

Location ID: 335147



Photo # 9503 From entrance to location

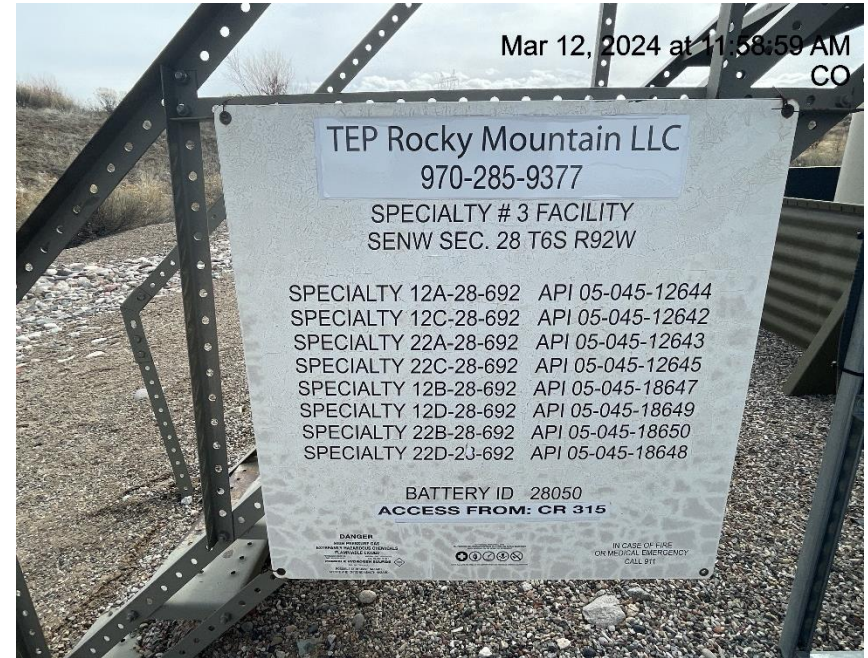


Photo # 9504 Location

Inspection Photos

Location Name: TEP ROCKY MOUNTAIN LLC SPECIALTY # 3 Pad

Location ID: 335147



Photo # 9505 Location



Photo # 9506 Location



Inspection Photos

Location Name: TEP ROCKY MOUNTAIN LLC SPECIALTY # 3 Pad

Location ID: 335147



Photo # 9507 Location

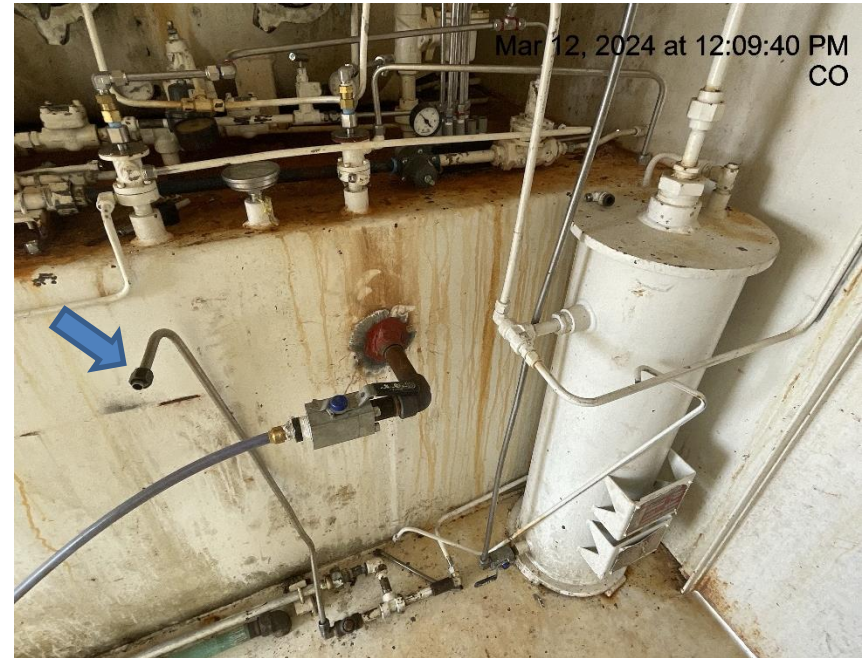


Photo # 9508 Line connected to PRV vent line in separator terminates in an unsafe manner/does not comply with CECMC pressure safety device rules & general safety rules.

Inspection Photos

Location Name: TEP ROCKY MOUNTAIN LLC SPECIALTY # 3 Pad

Location ID: 335147

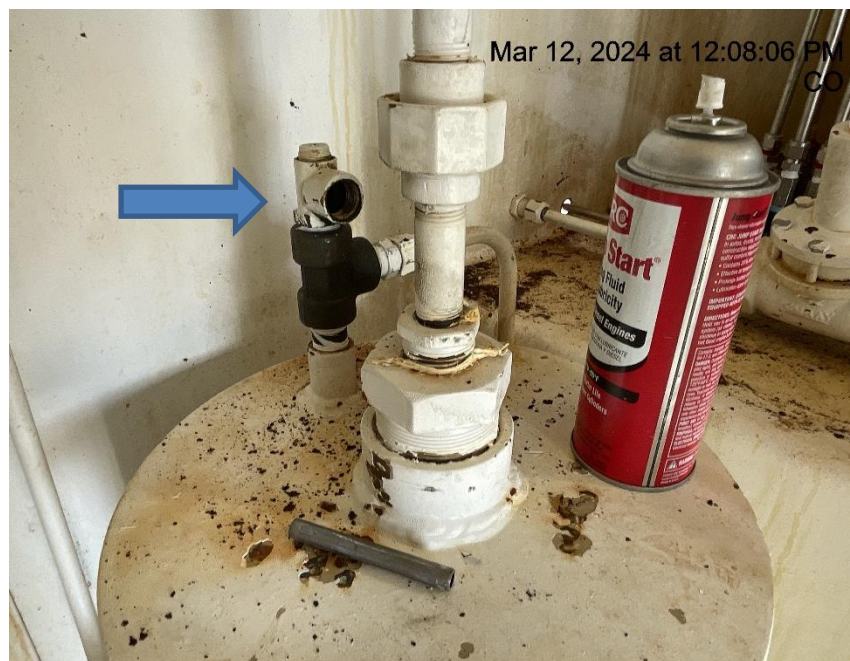


Photo # 9509 PRV does not comply with CECMC pressure safety device rules & general safety rules.



Photo # 9510 PRV vent line on tank burner terminates in an unsafe manner/does not comply with CECMC pressure safety device rules & general safety rules.

Inspection Photos

Location Name: TEP ROCKY MOUNTAIN LLC SPECIALTY # 3 Pad

Location ID: 335147



Photo # 9511 PRV vent line on tank burner terminates in an unsafe manner/does not comply with CECMC pressure safety device rules & general safety rules.



Photo # 9512 PRV vent line on tank burner terminates in an unsafe manner/does not comply with CECMC pressure safety device rules & general safety rules.

Inspection Photos

Location Name: TEP ROCKY MOUNTAIN LLC SPECIALTY # 3 Pad

Location ID: 335147

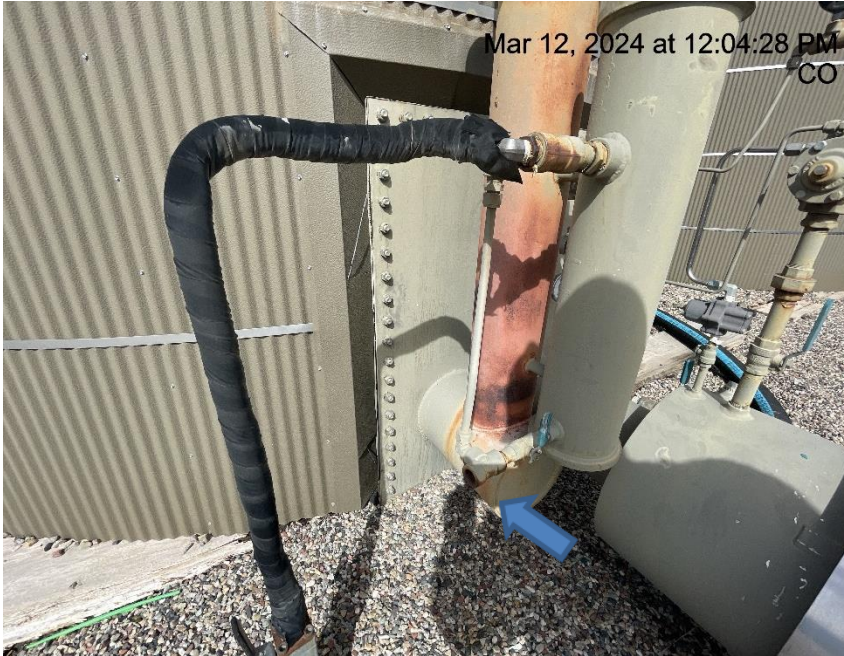


Photo # 9513 PRV vent line on tank burner terminates in an unsafe manner/does not comply with CECMC pressure safety device rules & general safety rules.



Photo # 9514 Debris

Inspection Photos

Location Name: TEP ROCKY MOUNTAIN LLC SPECIALTY # 3 Pad

Location ID: 335147



Photo # 9415 Debris