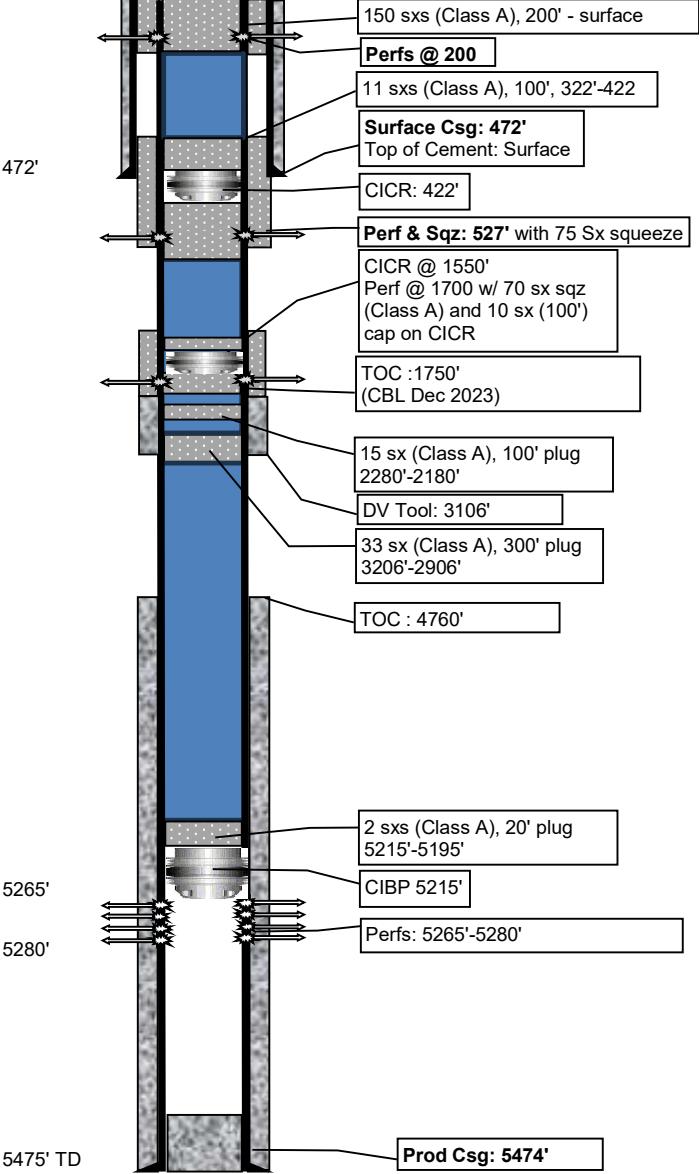


Hoffman 8

As is plugged WBD

API #	Lease ID	Permit #	County	KB	GL	Current production	Sec N/S	Sec E/W	Sec
05-017-07503		95-902	Cheyenne	4330'	4318'		1980' N	880' W	31-14S-44W
Pumping Unit	Motor	State	TD	PBTD	Initial production	Lease N/S	Lease E/W	Blk	
KB = 12'	LUF 320-250-74	CO	5475'		99 BOPD 20 MCFD				



Perforations				
Top	Bottom	SPF	Stimulation	OPEN?
5265'	5280'		1250 gal MCA 2500 gal MOD 202	YES

Casing				
Depth	Size	Wgt (#)	Grade	Description
472'	13-3/8"	48		
5474'	5-1/2"	15.5		

Cement			
Casing	Sacks	TOC	Description
13-3/8"	325	surface	200 sx lite; 125 sx common
5-1/2"	200	1750(2023 CBL)	DV Tool set at 3106'
5 -1/2"	75	4760	