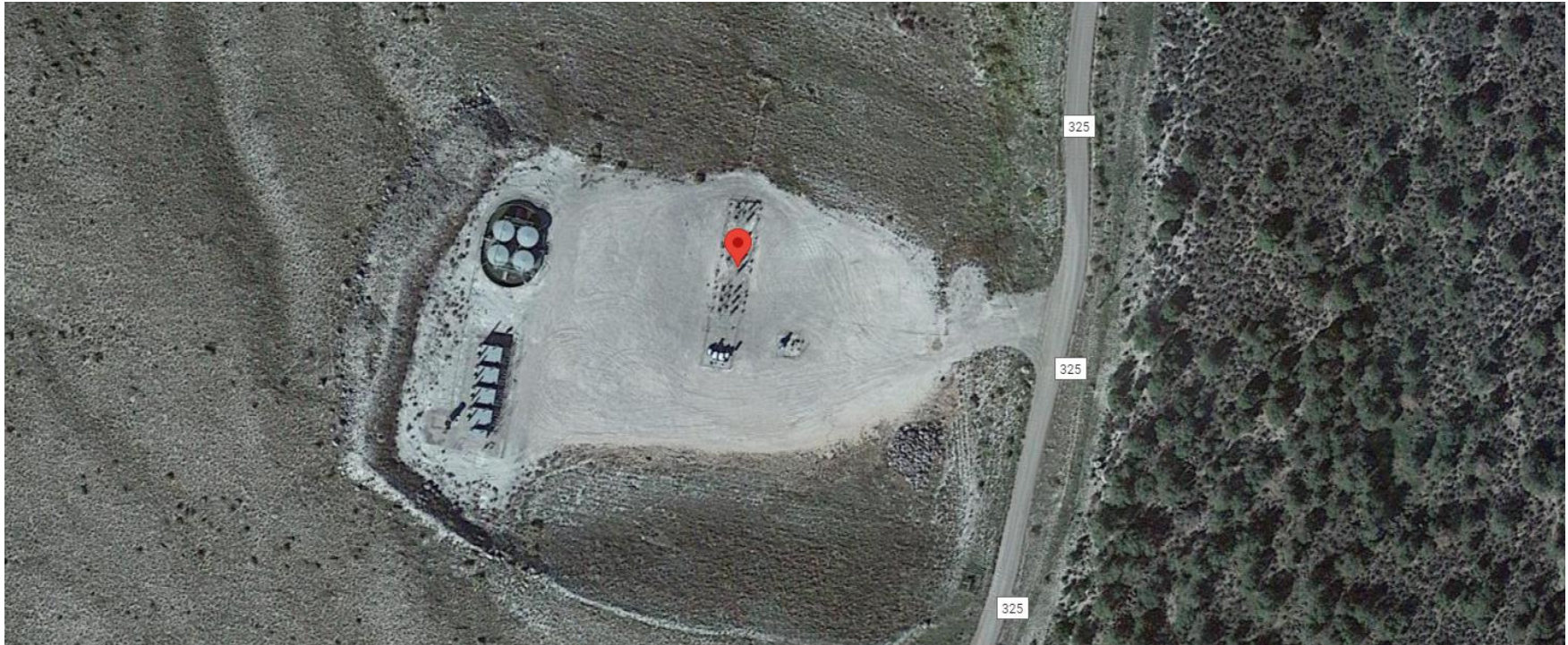


**Storm Water Management and Erosion control**  
**Location Name: TEP ROCKY MOUNTAIN LLC SAVAGE RMV 15-35 Pad**  
**Location ID: 323901**



**Location Overview: Location is within High  
Priority/Density/Black Bear Habitat areas & in close proximity  
to NSO Habitat area & Bald Eagle Roost Site. Location is  
approximately 370 yards from Porcupine Creek.  
Section/Township/Range: 35 6S94W**



**Storm water Management and Erosion control**  
**Location Name: TEP ROCKY MOUNTAIN LLC SAVAGE RMV 15-35 Pad**  
**Location ID: 323901**



**North West corner of location.**



**North East corner of location.**



**South West corner of location.**



**South East corner of location.**