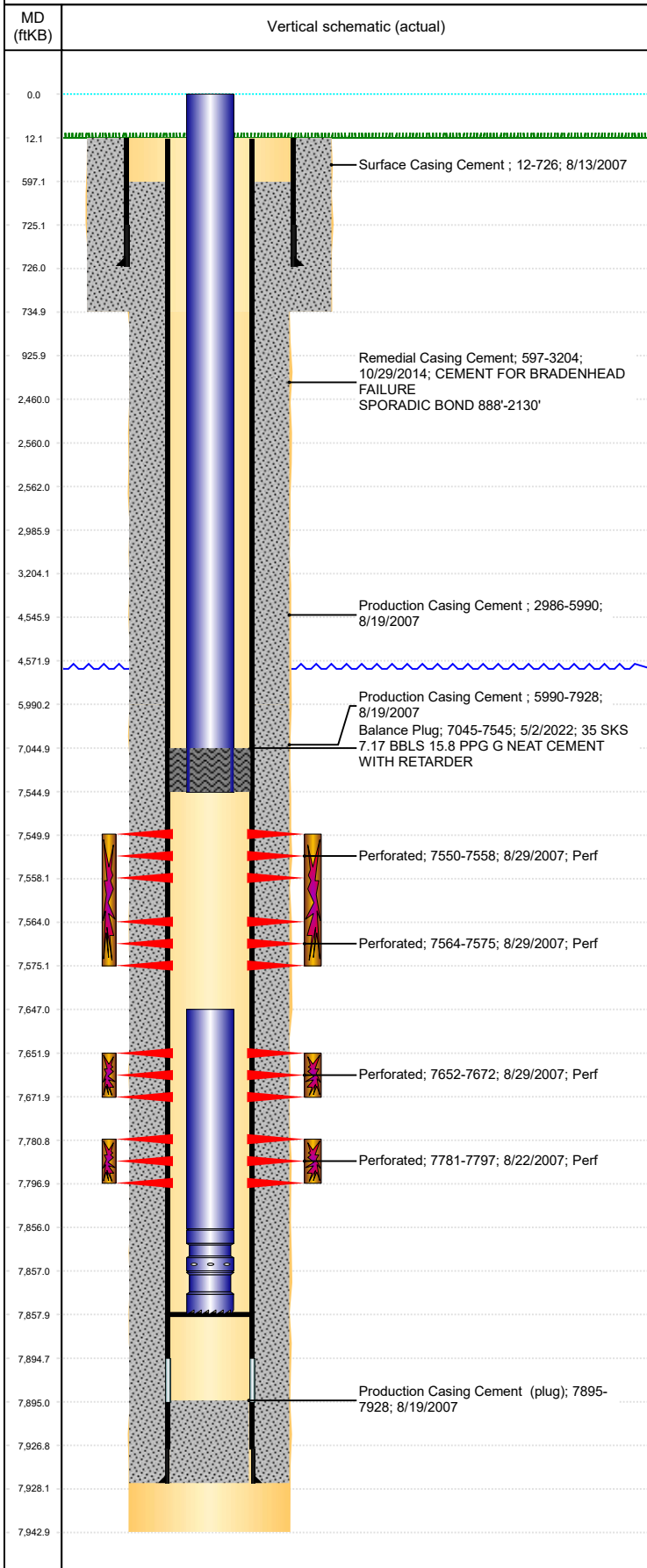




# P&A Wellbore For State

Well Name: FRICO 18-14

Land, Original Hole, 8/29/2023 6:58:48 AM



## Well Header

Surface UWI 0512324182	Business Unit Rockies	Gov Auth Dist	Prod Tree Loc Land
Orig. KB to Gnd (ft) 12.00	Original Spud Date 8/11/2007	Abandon Date	Well Sub-Status TA
High... N			

### Comment

WELL DATA SKETCHY & SPARSE.

TD DATE DISCREPANCY: DRL RPT = 8/18/2007, ST RPT = 8/17/2007

## Surface Location (Congressional)

Qtr 3 SW	Qtr 4 NE	Section 14	Twnshp 3	Twnsh... N	Range 65	Rng E... W	Latitude (°) 40.22859	Longitude (°) -104.62569
-------------	-------------	---------------	-------------	---------------	-------------	---------------	--------------------------	-----------------------------

## Wellbore Sections

Section Des	Hole Size (in)	Act Top (ftKB)	Act Btm (ftKB)
SURFACE	12 1/4	12.0	735.0
PRODUCTION	7 7/8	735.0	7,943.0

## Casing Strings

Csg Des	Run Date	OD (in)	Wt/Len (lb/ft)	Grade	Top Depth (MD) (ftKB)	Set Depth (MD) (ftKB)
Surface	8/12/2007	8 5/8	24.00	J-55	12	726
Production Casing	8/19/2007	4 1/2	11.60	N-80	12	7928

## Cement

Des	Start Date	Top (ftKB)	Btm (ftKB)
Surface Casing Cement	8/13/2007	12.0	726.0
Production Casing Cement	8/19/2007	2,986.0	5,990.0
Production Casing Cement	8/19/2007	5,990.0	7,928.0
Remedial Casing Cement	10/29/2014	597.0	3,204.0
Balance Plug	5/2/2022	7,045.0	7,545.0

## Zone Statuses

Zone Name	Status Date	Status	Fluid Type	Job	Prod Method
NIOBRARA	9/5/2007	PR		DRILLING/COMPLETION - ORIGINAL, 8/11/2007...	
NIOBRARA	5/2/2022	TA		SET CEMENT PLUG, 4/4/2022 00:00	
CODELL	9/5/2007	PR		DRILLING/COMPLETION - ORIGINAL, 8/11/2007...	
CODELL	5/2/2022	TA		SET CEMENT PLUG, 4/4/2022 00:00	

## Perforation Data

Linked Zone	Explosive Type	Entered Shot Total	Top (ftKB)	Btm (ftKB)	Date
NIOBRARA, Original Hole	A	24	7,550.0	7,558.0	8/29/2007
NIOBRARA, Original Hole	B	33	7,564.0	7,575.0	8/29/2007
NIOBRARA, Original Hole	C	60	7,652.0	7,672.0	8/29/2007
CODELL, Original Hole		64	7,781.0	7,797.0	8/22/2007

## Stimulation Intervals

Zone	Start Date	Top (ftKB)	Btm (ftKB)
NIOBRARA, Original Hole	6/20/2014	7,550.0	7,575.0
NIOBRARA, Original Hole	8/29/2007	7,652.0	7,672.0
CODELL, Original Hole	8/29/2007	7,781.0	7,797.0

## Other In Hole

Run Date	Des	Make	OD (in)	Top (ftKB)	Btm (ftKB)

## Logs

Date	Type	Depth Top (MD) (ftKB)	Btm (ftKB)
8/18/2007	COMPENSATED NEUTRON	728	7,937.0
8/18/2007	INDUCTION	728	7,937.0
8/27/2007	CBL/CCL/GR	3,000	7,844.0
10/30/2014	CBL/CCL/GR	12	4,000.0

## Plug Back Total Depths

Date	Type	Com	PBTD (ftKB)
8/27/2007	FILL	DEPTH LOGGER FROM CBL	7,846
4/24/2008	FILL	CLEAN OUT & LAND TBG	7,858