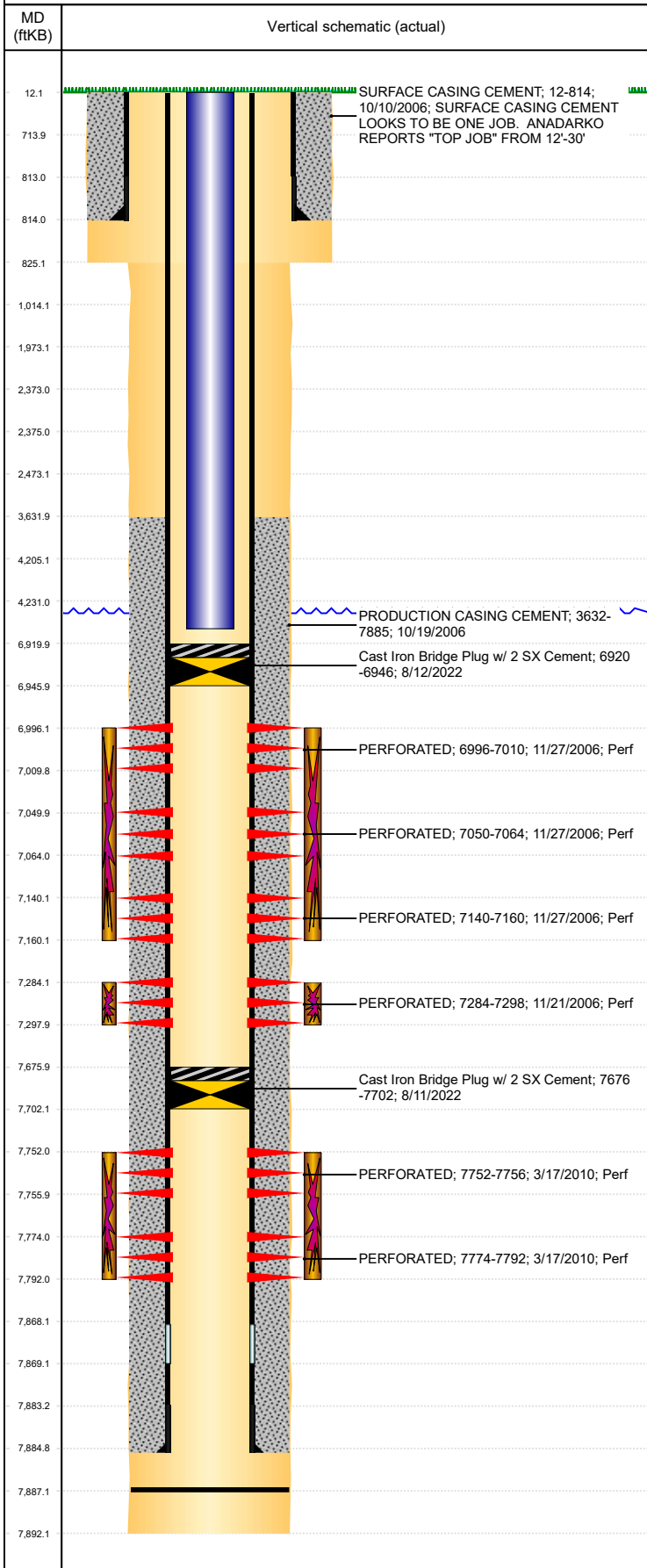




P&A Wellbore For State

Well Name: FRICO 23-10

Land, Original Hole, 8/30/2023 6:52:51 AM



Well Header										
Surface UWI 0512324242			Business Unit Rockies			Gov Auth Dist		Prod Tree Loc Land		
Orig. KB to Gnd (ft) 12.00		Original Spud Date 10/10/2006		Abandon Date		Well Sub-Status TA			High... N	
Comment DEVIATED WELL, SURFACE CASING CEMENT LOOKS TO BE ONE JOB. ANADARKO REPORTS "TOP JOB" FROM 12'-30'										
Surface Location (Congressional)										
Qtr 3 NE	Qtr 4 SW	Section 10	Twnshp 3	Twnsh... N	Range 65	Rng E... W	Latitude (°) 40.2394915	Longitude (°) -104.6517158		
Wellbore Sections										
Section Des			Hole Size (in)			Act Top (ftKB)		Act Btm (ftKB)		
SURFACE			12 1/4			12.0		825.0		
PRODUCTION			7 7/8			825.0		7,892.0		
Casing Strings										
Csg Des			Run Date		OD (in)	Wt/Len (lb/ft)	Grade	Top Depth (MD) (ftKB)	Set Depth (MD) (ftKB)	
Surface			10/10/2006		8 5/8	24.00	K-55	12	814	
Production Casing			10/19/2006		4 1/2	11.60	N-80	12	7885	
Cement										
Des					Start Date		Top (ftKB)		Btm (ftKB)	
SURFACE CASING CEMENT					10/10/2006		12.0		814.0	
PRODUCTION CASING CEMENT					10/19/2006		3,632.0		7,885.0	
Zone Statuses										
Zone Name		Status Date		Status	Fluid Type	Job			Prod Method	
CODELL		12/5/2006		PR		DRILLING/COMPLETION - ORIGINAL, 10/10/200...			Flowing	
CODELL		8/12/2022		Closed		CIBP, 8/11/2022 00:00				
NIOBRARA		12/5/2006		PR		DRILLING/COMPLETION - ORIGINAL, 10/10/200...			Flowing	
NIOBRARA		8/12/2022		Closed		CIBP, 8/11/2022 00:00				
J SAND		4/20/2010		PR		RECOMPLETION, 3/16/2010 00:00			Flowing	
J SAND		8/11/2022		Closed		CIBP, 8/11/2022 00:00				
Perforation Data										
Linked Zone				Explosive Type	Entered Shot Total	Top (ftKB)		Btm (ftKB)	Date	
NIOBRARA, Original Hole				A	42	6,996.0		7,010.0	11/27/2006	
NIOBRARA, Original Hole				B	42	7,050.0		7,064.0	11/27/2006	
NIOBRARA, Original Hole				C	20	7,140.0		7,160.0	11/27/2006	
CODELL, Original Hole					56	7,284.0		7,298.0	11/21/2006	
J SAND, Original Hole					12	7,752.0		7,756.0	3/17/2010	
J SAND, Original Hole					54	7,774.0		7,792.0	3/17/2010	
Stimulation Intervals										
Zone					Start Date		Top (ftKB)		Btm (ftKB)	
NIOBRARA, Original Hole					11/27/2006		6,996.0		7,160.0	
CODELL, Original Hole					11/27/2006		7,284.0		7,298.0	
J SAND, Original Hole					3/24/2010		7,752.0		7,792.0	
Other In Hole										
Run Date		Des				Make		OD (in)	Top (ftKB)	Btm (ftKB)
8/11/2022		Cast Iron Bridge Plug w/ 2 SX Cement						4	7,676.0	7,702.0
8/12/2022		Cast Iron Bridge Plug w/ 2 SX Cement						4	6,920.0	6,946.0
Logs										
Date		Type					Depth Top (MD) (ftKB)		Btm (ftKB)	
10/19/2006		CALIPER LOG					815		7,895.0	
10/19/2006		COMPENSATED NEUTRON					815		7,895.0	
10/19/2006		INDUCTION					815		7,895.0	
10/19/2006		MICRO LOG					815		7,895.0	
11/21/2006		CEMENT BOND					815		7,895.0	
Plug Back Total Depths										
Date		Type			Com					PBTD (ftKB)
11/21/2006		FILL			DEPTH LOGGER ON CBL					7,867
3/16/2010		FILL			MOST RECENT CLEANOUT					7,887