

# NOBLE ENERGY, INC

Location: COLORADO Slot: SLOT#04 Cecil AB35-655 (2393°FSL & 1244°FWL,SEC.35)

Field: WELD COUNTY (NOBLE NAD 83 GRID) Well: Cecil AB35-655

Facility: SEC.35-T07N-R64W Wellbore: Cecil AB35-655 PWB

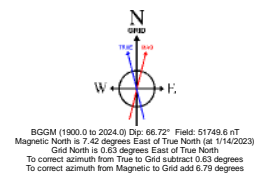
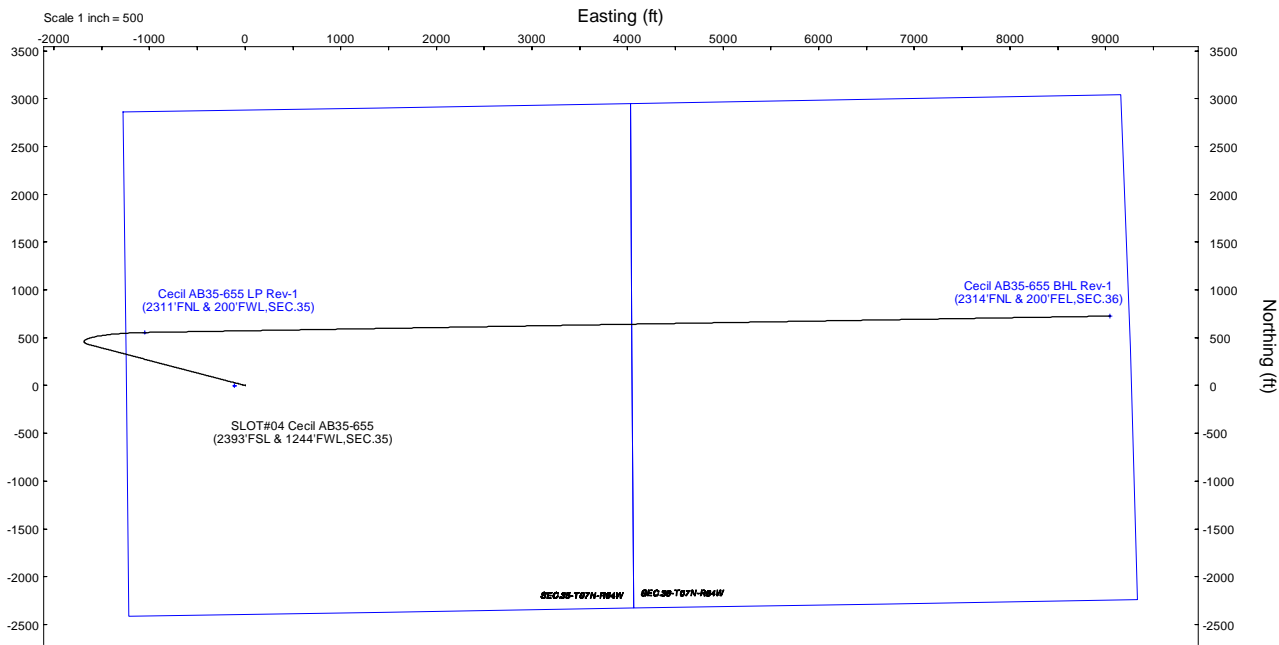
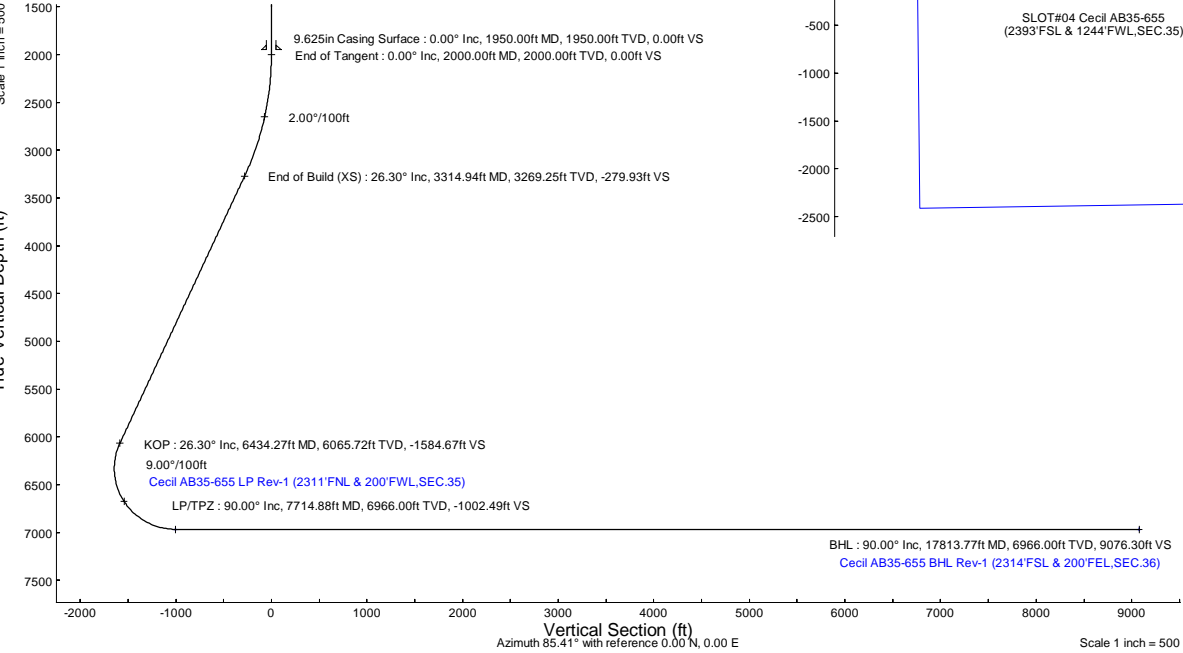
Plot reference wellpath is Cecil AB35-655 (REV-A.1) PWP	Grid System: NAD83 / Lambert Colorado SP, Northern Zone (501), US feet
True vertical depths are referenced to (4836'GL+30'KB@4866'RKB) (RKB)	North Reference: Grid north
Reference wellpath measured depths are referenced to (4836'GL+30'KB@4866'RKB) (RKB)	Scale: True distance
(4836'GL+30'KB@4866'RKB) (RKB) to Mean Sea Level: 4866 feet	Coordinates are in feet referenced to Slot
Mean Sea Level to Ground level (At Slot: SLOT#04 Cecil AB35-655 (2393°FSL & 1244°FWL,SEC.35)): 0 feet	Depths are in feet
Offset wellpath MDs are referenced to each path's default MD datum	Created by: guenaler on 2023-01-14; Database: WA_Denver

Location Information					
Facility Name		Grid East (US ft)	Grid North (US ft)	Latitude	Longitude
SEC.35-T07N-R64W		3271672.548	1437099.887	40°31'44.8680"N	104°31'21.6120"W
Slot	Local N (ft)	Local E (ft)	Grid East (US ft)	Grid North (US ft)	Latitude
SLOT#04 Cecil AB35-655 (2393°FSL & 1244°FWL,SEC.35)	1.23	111.19	3271783.734	1437101.113	40°31'44.8680"N
(4836'GL+30'KB@4866'RKB) (RKB) to Ground level (At Slot: SLOT#04 Cecil AB35-655 (2393°FSL & 1244°FWL,SEC.35))		4866ft			
Mean Sea Level to Ground level (At Slot: SLOT#04 Cecil AB35-655 (2393°FSL & 1244°FWL,SEC.35))		0ft			
(4836'GL+30'KB@4866'RKB) (RKB) to Mean Sea Level		4866ft			

Well Profile Data								
Design Comment	MD (ft)	Inc (°)	Az (°)	TVD (ft)	Local N (ft)	Local E (ft)	DLS (°/100ft)	VS (ft)
SHL	30.00	0.000	284.661	30.00	0.00	0.00	0.00	0.00
End of Tangent	2000.00	0.000	284.661	2000.00	0.00	0.00	0.00	0.00
End of Build (XS)	3314.94	26.299	284.661	3269.25	75.05	-286.86	2.00	-279.93
KOP	6434.27	26.299	284.661	6065.72	424.85	-1623.89	0.00	-1584.67
LP/TPZ	7714.88	90.000	89.024	6966.00	554.56	-1050.24	9.00	-1002.49
BHL	17813.77	90.000	89.024	6966.00	726.49	9047.18	0.00	9076.30

Targets								
Name	MD (ft)	TVD (ft)	Local N (ft)	Local E (ft)	Grid East (US ft)	Grid North (US ft)	Latitude	Longitude
SEC.35-T07N-R64W OGP 3	N/A	0.00	-1.23	-111.19	3271672.55	1437099.89	40°31'44.8680"N	104°31'21.6120"W
SEC.36-T07N-R64W OGP 3	N/A	0.00	-1.23	-111.19	3271672.55	1437099.89	40°31'44.8680"N	104°31'21.6120"W
Cecil AB35-655 BHL Rev-2 (2314°FNL & 200°FEL,SEC.36)	17813.77	6966.00	726.49	9047.18	3280830.61	1437827.58	40°31'51.0442"N	104°29'22.9101"W
Cecil AB35-655 LP Rev-1 (2311°FNL & 200°FWL,SEC.35)	7714.88	6966.00	554.56	-1050.24	3270733.52	1437655.65	40°31'50.4617"N	104°31'33.6931"W

Survey Program					
Start MD (ft)	End MD (ft)	Tool	Model	Log Name/Comment	Wellbore
30.00	17813.77	OWSG MWD rev2	OWSG MWD rev2 (MS+IFR1)		Cecil AB35-655 PWB





Planned Wellpath Report  
Cecil AB35-655 (REV-A.1) PWP  
Page 1 of 7



REFERENCE WELLPATH IDENTIFICATION			
Operator	NOBLE ENERGY, INC	Well	Cecil AB35-655
Field	WELD COUNTY (NOBLE NAD 83 GRID)	API/Legal	
Facility	SEC.35-T07N-R64W	Wellbore	Cecil AB35-655 PWB
Slot	SLOT#04 Cecil AB35-655 (2393'FSL & 1244'FWL,SEC.35)		

REPORT SETUP INFORMATION			
Projection System	NAD83 / Lambert Colorado SP, Northern Zone (501), US feet	Software System	WellArchitect® 6.0
North Reference	Grid	User	Guenaler
Scale	0.999969	Report Generated	7/12/2023 at 12:09:43 PM
Convergence at slot	0.63° East	Database	WA_Denver

WELLPATH LOCATION						
	Local coordinates		Grid coordinates		Geographic coordinates	
	North[ft]	East[ft]	Easting[US ft]	Northing[US ft]	Latitude	Longitude
Slot Location	1.23	111.19	3271783.73	1437101.11	40.5291300°	-104.5222700°
Facility Reference Pt			3271672.55	1437099.89	40.5291300°	-104.5226700°
Field Reference Pt			3000000.00	4454105.15	48.7761986°	-105.5000000°

WELLPATH DATUM			
Calculation method	Minimum curvature	(4836'GL+30'KB@4866'RKB) (RKB) to Facility Vertical Datum	4866.00ft
Horizontal Reference Pt	Slot	(4836'GL+30'KB@4866'RKB) (RKB) to Mean Sea Level	4866.00ft
Vertical Reference Pt	(4836'GL+30'KB@4866'RKB) (RKB)	(4836'GL+30'KB@4866'RKB) (RKB) to Ground Level at Slot (SLOT#04 Cecil AB35-655 (2393'FSL & 1244'FWL,SEC.35))	4866.00ft
MD Reference Pt	(4836'GL+30'KB@4866'RKB) (RKB)	Section Origin	N 0.00, E 0.00 ft
Field Vertical Reference	Mean Sea Level	Section Azimuth	85.41°



Planned Wellpath Report  
Cecil AB35-655 (REV-A.1) PWP  
Page 2 of 7



REFERENCE WELLPATH IDENTIFICATION			
Operator	NOBLE ENERGY, INC	Well	Cecil AB35-655
Field	WELD COUNTY (NOBLE NAD 83 GRID)	API/Legal	
Facility	SEC.35-T07N-R64W	Wellbore	Cecil AB35-655 PWB
Slot	SLOT#04 Cecil AB35-655 (2393'FSL & 1244'FWL,SEC.35)		

WELLPATH DATA (184 stations) † = interpolated, ‡ = extrapolated station										
MD [ft]	Inclination [°]	Azimuth [°]	TVD [ft]	Vert Sect [ft]	North [ft]	East [ft]	Latitude	Longitude	DLS [°/100ft]	Comments
0.00†	0.000	284.661	0.00	0.00	0.00	0.00	40.5291300	-104.5222700	0.00	
30.00	0.000	284.661	30.00	0.00	0.00	0.00	40.5291300	-104.5222700	0.00	SHL
130.00†	0.000	284.661	130.00	0.00	0.00	0.00	40.5291300	-104.5222700	0.00	
230.00†	0.000	284.661	230.00	0.00	0.00	0.00	40.5291300	-104.5222700	0.00	
330.00†	0.000	284.661	330.00	0.00	0.00	0.00	40.5291300	-104.5222700	0.00	
430.00†	0.000	284.661	430.00	0.00	0.00	0.00	40.5291300	-104.5222700	0.00	
530.00†	0.000	284.661	530.00	0.00	0.00	0.00	40.5291300	-104.5222700	0.00	
630.00†	0.000	284.661	630.00	0.00	0.00	0.00	40.5291300	-104.5222700	0.00	
730.00†	0.000	284.661	730.00	0.00	0.00	0.00	40.5291300	-104.5222700	0.00	
830.00†	0.000	284.661	830.00	0.00	0.00	0.00	40.5291300	-104.5222700	0.00	
930.00†	0.000	284.661	930.00	0.00	0.00	0.00	40.5291300	-104.5222700	0.00	
1030.00†	0.000	284.661	1030.00	0.00	0.00	0.00	40.5291300	-104.5222700	0.00	
1130.00†	0.000	284.661	1130.00	0.00	0.00	0.00	40.5291300	-104.5222700	0.00	
1230.00†	0.000	284.661	1230.00	0.00	0.00	0.00	40.5291300	-104.5222700	0.00	
1330.00†	0.000	284.661	1330.00	0.00	0.00	0.00	40.5291300	-104.5222700	0.00	
1430.00†	0.000	284.661	1430.00	0.00	0.00	0.00	40.5291300	-104.5222700	0.00	
1530.00†	0.000	284.661	1530.00	0.00	0.00	0.00	40.5291300	-104.5222700	0.00	
1630.00†	0.000	284.661	1630.00	0.00	0.00	0.00	40.5291300	-104.5222700	0.00	
1730.00†	0.000	284.661	1730.00	0.00	0.00	0.00	40.5291300	-104.5222700	0.00	
1830.00†	0.000	284.661	1830.00	0.00	0.00	0.00	40.5291300	-104.5222700	0.00	
1930.00†	0.000	284.661	1930.00	0.00	0.00	0.00	40.5291300	-104.5222700	0.00	
2000.00	0.000	284.661	2000.00	0.00	0.00	0.00	40.5291300	-104.5222700	0.00	End of Tangent
2030.00†	0.600	284.661	2030.00	-0.15	0.04	-0.15	40.5291301	-104.5222705	2.00	
2130.00†	2.600	284.661	2129.96	-2.78	0.75	-2.85	40.5291321	-104.5222802	2.00	
2230.00†	4.600	284.661	2229.75	-8.71	2.34	-8.93	40.5291367	-104.5223020	2.00	
2330.00†	6.600	284.661	2329.27	-17.92	4.81	-18.37	40.5291437	-104.5223359	2.00	
2430.00†	8.600	284.661	2428.39	-30.41	8.15	-31.16	40.5291533	-104.5223818	2.00	
2530.00†	10.600	284.661	2526.98	-46.15	12.37	-47.29	40.5291654	-104.5224396	2.00	
2630.00†	12.600	284.661	2624.93	-65.13	17.46	-66.75	40.5291799	-104.5225094	2.00	
2730.00†	14.600	284.661	2722.13	-87.33	23.41	-89.49	40.5291970	-104.5225910	2.00	
2830.00†	16.600	284.661	2818.44	-112.72	30.22	-115.51	40.5292164	-104.5226843	2.00	
2930.00†	18.600	284.661	2913.75	-141.26	37.87	-144.76	40.5292383	-104.5227892	2.00	
3030.00†	20.600	284.661	3007.95	-172.93	46.36	-177.21	40.5292626	-104.5229056	2.00	
3130.00†	22.600	284.661	3100.93	-207.68	55.68	-212.82	40.5292893	-104.5230333	2.00	
3230.00†	24.600	284.661	3192.56	-245.48	65.81	-251.55	40.5293182	-104.5231722	2.00	
3314.94	26.299	284.661	3269.25	-279.93	75.05	-286.86	40.5293447	-104.5232989	2.00	Build (XS)
3330.00†	26.299	284.661	3282.75	-286.23	76.74	-293.32	40.5293495	-104.5233220	0.00	
3430.00†	26.299	284.661	3372.40	-328.06	87.95	-336.18	40.5293816	-104.5234758	0.00	
3530.00†	26.299	284.661	3462.05	-369.89	99.17	-379.04	40.5294136	-104.5236295	0.00	
3630.00†	26.299	284.661	3551.70	-411.72	110.38	-421.91	40.5294457	-104.5237832	0.00	
3730.00†	26.299	284.661	3641.35	-453.54	121.59	-464.77	40.5294778	-104.5239370	0.00	
3830.00†	26.299	284.661	3731.00	-495.37	132.81	-507.63	40.5295099	-104.5240907	0.00	
3930.00†	26.299	284.661	3820.65	-537.20	144.02	-550.49	40.5295419	-104.5242444	0.00	
4030.00†	26.299	284.661	3910.30	-579.03	155.24	-593.36	40.5295740	-104.5243982	0.00	
4130.00†	26.299	284.661	3999.95	-620.85	166.45	-636.22	40.5296061	-104.5245519	0.00	



Planned Wellpath Report  
Cecil AB35-655 (REV-A.1) PWP  
Page 3 of 7



REFERENCE WELLPATH IDENTIFICATION			
Operator	NOBLE ENERGY, INC	Well	Cecil AB35-655
Field	WELD COUNTY (NOBLE NAD 83 GRID)	API/Legal	
Facility	SEC.35-T07N-R64W	Wellbore	Cecil AB35-655 PWB
Slot	SLOT#04 Cecil AB35-655 (2393'FSL & 1244'FWL,SEC.35)		

WELLPATH DATA (184 stations) † = interpolated, ‡ = extrapolated station										
MD [ft]	Inclination [°]	Azimuth [°]	TVD [ft]	Vert Sect [ft]	North [ft]	East [ft]	Latitude	Longitude	DLS [°/100ft]	Comments
4230.00†	26.299	284.661	4089.60	-662.68	177.66	-679.08	40.5296382	-104.5247057	0.00	
4330.00†	26.299	284.661	4179.25	-704.51	188.88	-721.94	40.5296702	-104.5248594	0.00	
4430.00†	26.299	284.661	4268.90	-746.34	200.09	-764.81	40.5297023	-104.5250131	0.00	
4530.00†	26.299	284.661	4358.55	-788.16	211.31	-807.67	40.5297344	-104.5251669	0.00	
4630.00†	26.299	284.661	4448.20	-829.99	222.52	-850.53	40.5297664	-104.5253206	0.00	
4730.00†	26.299	284.661	4537.85	-871.82	233.73	-893.39	40.5297985	-104.5254743	0.00	
4830.00†	26.299	284.661	4627.50	-913.65	244.95	-936.26	40.5298306	-104.5256281	0.00	
4930.00†	26.299	284.661	4717.15	-955.47	256.16	-979.12	40.5298627	-104.5257818	0.00	
5030.00†	26.299	284.661	4806.80	-997.30	267.38	-1021.98	40.5298947	-104.5259355	0.00	
5130.00†	26.299	284.661	4896.45	-1039.13	278.59	-1064.84	40.5299268	-104.5260893	0.00	
5230.00†	26.299	284.661	4986.10	-1080.96	289.80	-1107.71	40.5299589	-104.5262430	0.00	
5330.00†	26.299	284.661	5075.74	-1122.78	301.02	-1150.57	40.5299909	-104.5263968	0.00	
5430.00†	26.299	284.661	5165.39	-1164.61	312.23	-1193.43	40.5300230	-104.5265505	0.00	
5530.00†	26.299	284.661	5255.04	-1206.44	323.45	-1236.29	40.5300551	-104.5267042	0.00	
5630.00†	26.299	284.661	5344.69	-1248.27	334.66	-1279.16	40.5300872	-104.5268580	0.00	
5730.00†	26.299	284.661	5434.34	-1290.09	345.87	-1322.02	40.5301192	-104.5270117	0.00	
5830.00†	26.299	284.661	5523.99	-1331.92	357.09	-1364.88	40.5301513	-104.5271655	0.00	
5930.00†	26.299	284.661	5613.64	-1373.75	368.30	-1407.74	40.5301834	-104.5273192	0.00	
6030.00†	26.299	284.661	5703.29	-1415.58	379.51	-1450.61	40.5302154	-104.5274729	0.00	
6130.00†	26.299	284.661	5792.94	-1457.40	390.73	-1493.47	40.5302475	-104.5276267	0.00	
6230.00†	26.299	284.661	5882.59	-1499.23	401.94	-1536.33	40.5302796	-104.5277804	0.00	
6330.00†	26.299	284.661	5972.24	-1541.06	413.16	-1579.19	40.5303116	-104.5279341	0.00	
6430.00†	26.299	284.661	6061.89	-1582.89	424.37	-1622.06	40.5303437	-104.5280879	0.00	
6434.27	26.299	284.661	6065.72	-1584.67	424.85	-1623.89	40.5303451	-104.5280944	0.00	KOP
6530.00†	18.243	292.861	6154.26	-1618.05	436.06	-1658.28	40.5303769	-104.5282177	9.00	
6630.00†	10.751	313.575	6251.06	-1638.20	448.60	-1679.50	40.5304119	-104.5282936	9.00	
6730.00†	7.708	9.221	6349.94	-1642.83	461.67	-1685.19	40.5304480	-104.5283135	9.00	
6830.00†	12.817	53.186	6448.44	-1631.83	474.96	-1675.22	40.5304842	-104.5282771	9.00	
6930.00†	20.741	68.429	6544.15	-1605.45	488.15	-1649.82	40.5305196	-104.5281852	9.00	
7030.00†	29.276	75.279	6634.71	-1564.36	500.90	-1609.62	40.5305534	-104.5280401	9.00	
7130.00†	38.013	79.212	6717.89	-1509.57	512.90	-1555.61	40.5305847	-104.5278454	9.00	
7230.00†	46.837	81.848	6791.64	-1442.42	523.86	-1489.13	40.5306128	-104.5276058	9.00	
7330.00†	55.706	83.812	6854.14	-1364.57	533.50	-1411.80	40.5306369	-104.5273273	9.00	
7430.00†	64.601	85.398	6903.86	-1277.93	541.59	-1325.53	40.5306565	-104.5270166	9.00	
7530.00†	73.510	86.765	6939.58	-1184.64	547.94	-1232.45	40.5306711	-104.5266816	9.00	
7630.00†	82.428	88.010	6960.40	-1087.00	552.37	-1134.85	40.5306804	-104.5263303	9.00	
7714.88	90.000	89.024	6966.00†	-1002.49	554.56	-1050.24	40.5306838	-104.5260259	9.00	LP/TPZ
7730.00†	90.000	89.024	6966.00	-987.40	554.82	-1035.13	40.5306841	-104.5259715	0.00	
7830.00†	90.000	89.024	6966.00	-887.60	556.52	-935.14	40.5306857	-104.5256118	0.00	
7930.00†	90.000	89.024	6966.00	-787.80	558.22	-835.16	40.5306874	-104.5252520	0.00	
8030.00†	90.000	89.024	6966.00	-688.00	559.92	-735.17	40.5306890	-104.5248923	0.00	
8130.00†	90.000	89.024	6966.00	-588.19	561.63	-635.19	40.5306907	-104.5245326	0.00	
8230.00†	90.000	89.024	6966.00	-488.39	563.33	-535.20	40.5306923	-104.5241728	0.00	
8330.00†	90.000	89.024	6966.00	-388.59	565.03	-435.22	40.5306940	-104.5238131	0.00	
8430.00†	90.000	89.024	6966.00	-288.79	566.73	-335.23	40.5306956	-104.5234534	0.00	



Planned Wellpath Report  
Cecil AB35-655 (REV-A.1) PWP  
Page 4 of 7



REFERENCE WELLPATH IDENTIFICATION			
Operator	NOBLE ENERGY, INC	Well	Cecil AB35-655
Field	WELD COUNTY (NOBLE NAD 83 GRID)	API/Legal	
Facility	SEC.35-T07N-R64W	Wellbore	Cecil AB35-655 PWB
Slot	SLOT#04 Cecil AB35-655 (2393'FSL & 1244'FWL,SEC.35)		

WELLPATH DATA (184 stations) † = interpolated, ‡ = extrapolated station										
MD [ft]	Inclination [°]	Azimuth [°]	TVD [ft]	Vert Sect [ft]	North [ft]	East [ft]	Latitude	Longitude	DLS [°/100ft]	Comments
8530.00†	90.000	89.024	6966.00	-188.99	568.44	-235.25	40.5306973	-104.5230937	0.00	
8630.00†	90.000	89.024	6966.00	-89.19	570.14	-135.26	40.5306989	-104.5227339	0.00	
8730.00†	90.000	89.024	6966.00	10.61	571.84	-35.27	40.5307006	-104.5223742	0.00	
8830.00†	90.000	89.024	6966.00	110.41	573.54	64.71	40.5307022	-104.5220145	0.00	
8930.00†	90.000	89.024	6966.00	210.21	575.25	164.70	40.5307039	-104.5216547	0.00	
9030.00†	90.000	89.024	6966.00	310.01	576.95	264.68	40.5307055	-104.5212950	0.00	
9130.00†	90.000	89.024	6966.00	409.81	578.65	364.67	40.5307072	-104.5209353	0.00	
9230.00†	90.000	89.024	6966.00	509.62	580.35	464.65	40.5307088	-104.5205756	0.00	
9330.00†	90.000	89.024	6966.00	609.42	582.06	564.64	40.5307104	-104.5202158	0.00	
9430.00†	90.000	89.024	6966.00	709.22	583.76	664.62	40.5307121	-104.5198561	0.00	
9530.00†	90.000	89.024	6966.00	809.02	585.46	764.61	40.5307137	-104.5194964	0.00	
9630.00†	90.000	89.024	6966.00	908.82	587.16	864.60	40.5307154	-104.5191366	0.00	
9730.00†	90.000	89.024	6966.00	1008.62	588.87	964.58	40.5307170	-104.5187769	0.00	
9830.00†	90.000	89.024	6966.00	1108.42	590.57	1064.57	40.5307186	-104.5184172	0.00	
9930.00†	90.000	89.024	6966.00	1208.22	592.27	1164.55	40.5307203	-104.5180575	0.00	
10030.00†	90.000	89.024	6966.00	1308.02	593.97	1264.54	40.5307219	-104.5176977	0.00	
10130.00†	90.000	89.024	6966.00	1407.82	595.68	1364.52	40.5307235	-104.5173380	0.00	
10230.00†	90.000	89.024	6966.00	1507.63	597.38	1464.51	40.5307252	-104.5169783	0.00	
10330.00†	90.000	89.024	6966.00	1607.43	599.08	1564.49	40.5307268	-104.5166186	0.00	
10430.00†	90.000	89.024	6966.00	1707.23	600.78	1664.48	40.5307284	-104.5162588	0.00	
10530.00†	90.000	89.024	6966.00	1807.03	602.49	1764.47	40.5307301	-104.5158991	0.00	
10630.00†	90.000	89.024	6966.00	1906.83	604.19	1864.45	40.5307317	-104.5155394	0.00	
10730.00†	90.000	89.024	6966.00	2006.63	605.89	1964.44	40.5307333	-104.5151796	0.00	
10830.00†	90.000	89.024	6966.00	2106.43	607.59	2064.42	40.5307349	-104.5148199	0.00	
10930.00†	90.000	89.024	6966.00	2206.23	609.30	2164.41	40.5307366	-104.5144602	0.00	
11030.00†	90.000	89.024	6966.00	2306.03	611.00	2264.39	40.5307382	-104.5141005	0.00	
11130.00†	90.000	89.024	6966.00	2405.83	612.70	2364.38	40.5307398	-104.5137407	0.00	
11230.00†	90.000	89.024	6966.00	2505.64	614.40	2464.36	40.5307414	-104.5133810	0.00	
11330.00†	90.000	89.024	6966.00	2605.44	616.11	2564.35	40.5307430	-104.5130213	0.00	
11430.00†	90.000	89.024	6966.00	2705.24	617.81	2664.33	40.5307447	-104.5126615	0.00	
11530.00†	90.000	89.024	6966.00	2805.04	619.51	2764.32	40.5307463	-104.5123018	0.00	
11630.00†	90.000	89.024	6966.00	2904.84	621.21	2864.31	40.5307479	-104.5119421	0.00	
11730.00†	90.000	89.024	6966.00	3004.64	622.92	2964.29	40.5307495	-104.5115824	0.00	
11830.00†	90.000	89.024	6966.00	3104.44	624.62	3064.28	40.5307511	-104.5112226	0.00	
11930.00†	90.000	89.024	6966.00	3204.24	626.32	3164.26	40.5307527	-104.5108629	0.00	
12030.00†	90.000	89.024	6966.00	3304.04	628.02	3264.25	40.5307543	-104.5105032	0.00	
12130.00†	90.000	89.024	6966.00	3403.84	629.73	3364.23	40.5307559	-104.5101434	0.00	
12230.00†	90.000	89.024	6966.00	3503.64	631.43	3464.22	40.5307576	-104.5097837	0.00	
12330.00†	90.000	89.024	6966.00	3603.45	633.13	3564.20	40.5307592	-104.5094240	0.00	
12430.00†	90.000	89.024	6966.00	3703.25	634.83	3664.19	40.5307608	-104.5090642	0.00	
12530.00†	90.000	89.024	6966.00	3803.05	636.54	3764.18	40.5307624	-104.5087045	0.00	
12630.00†	90.000	89.024	6966.00	3902.85	638.24	3864.16	40.5307640	-104.5083448	0.00	
12730.00†	90.000	89.024	6966.00	4002.65	639.94	3964.15	40.5307656	-104.5079851	0.00	
12830.00†	90.000	89.024	6966.00	4102.45	641.64	4064.13	40.5307672	-104.5076253	0.00	
12930.00†	90.000	89.024	6966.00	4202.25	643.35	4164.12	40.5307688	-104.5072656	0.00	





Planned Wellpath Report  
Cecil AB35-655 (REV-A.1) PWP  
Page 5 of 7



REFERENCE WELLPATH IDENTIFICATION			
Operator	NOBLE ENERGY, INC	Well	Cecil AB35-655
Field	WELD COUNTY (NOBLE NAD 83 GRID)	API/Legal	
Facility	SEC.35-T07N-R64W	Wellbore	Cecil AB35-655 PWB
Slot	SLOT#04 Cecil AB35-655 (2393'FSL & 1244'FWL,SEC.35)		

WELLPATH DATA (184 stations) † = interpolated, ‡ = extrapolated station										
MD [ft]	Inclination [°]	Azimuth [°]	TVD [ft]	Vert Sect [ft]	North [ft]	East [ft]	Latitude	Longitude	DLS [°/100ft]	Comments
13030.00†	90.000	89.024	6966.00	4302.05	645.05	4264.10	40.5307704	-104.5069059	0.00	
13130.00†	90.000	89.024	6966.00	4401.85	646.75	4364.09	40.5307720	-104.5065461	0.00	
13230.00†	90.000	89.024	6966.00	4501.65	648.46	4464.07	40.5307736	-104.5061864	0.00	
13330.00†	90.000	89.024	6966.00	4601.46	650.16	4564.06	40.5307752	-104.5058267	0.00	
13430.00†	90.000	89.024	6966.00	4701.26	651.86	4664.04	40.5307768	-104.5054670	0.00	
13530.00†	90.000	89.024	6966.00	4801.06	653.56	4764.03	40.5307784	-104.5051072	0.00	
13630.00†	90.000	89.024	6966.00	4900.86	655.27	4864.02	40.5307800	-104.5047475	0.00	
13730.00†	90.000	89.024	6966.00	5000.66	656.97	4964.00	40.5307816	-104.5043878	0.00	
13830.00†	90.000	89.024	6966.00	5100.46	658.67	5063.99	40.5307831	-104.5040280	0.00	
13930.00†	90.000	89.024	6966.00	5200.26	660.37	5163.97	40.5307847	-104.5036683	0.00	
14030.00†	90.000	89.024	6966.00	5300.06	662.08	5263.96	40.5307863	-104.5033086	0.00	
14130.00†	90.000	89.024	6966.00	5399.86	663.78	5363.94	40.5307879	-104.5029489	0.00	
14230.00†	90.000	89.024	6966.00	5499.66	665.48	5463.93	40.5307895	-104.5025891	0.00	
14330.00†	90.000	89.024	6966.00	5599.47	667.18	5563.91	40.5307911	-104.5022294	0.00	
14430.00†	90.000	89.024	6966.00	5699.27	668.89	5663.90	40.5307927	-104.5018697	0.00	
14530.00†	90.000	89.024	6966.00	5799.07	670.59	5763.89	40.5307943	-104.5015099	0.00	
14630.00†	90.000	89.024	6966.00	5898.87	672.29	5863.87	40.5307958	-104.5011502	0.00	
14730.00†	90.000	89.024	6966.00	5998.67	673.99	5963.86	40.5307974	-104.5007905	0.00	
14830.00†	90.000	89.024	6966.00	6098.47	675.70	6063.84	40.5307990	-104.5004308	0.00	
14930.00†	90.000	89.024	6966.00	6198.27	677.40	6163.83	40.5308006	-104.5000710	0.00	
15030.00†	90.000	89.024	6966.00	6298.07	679.10	6263.81	40.5308021	-104.4997113	0.00	
15130.00†	90.000	89.024	6966.00	6397.87	680.80	6363.80	40.5308037	-104.4993516	0.00	
15230.00†	90.000	89.024	6966.00	6497.67	682.51	6463.78	40.5308053	-104.4989918	0.00	
15330.00†	90.000	89.024	6966.00	6597.47	684.21	6563.77	40.5308069	-104.4986321	0.00	
15430.00†	90.000	89.024	6966.00	6697.28	685.91	6663.75	40.5308084	-104.4982724	0.00	
15530.00†	90.000	89.024	6966.00	6797.08	687.61	6763.74	40.5308100	-104.4979126	0.00	
15630.00†	90.000	89.024	6966.00	6896.88	689.32	6863.73	40.5308116	-104.4975529	0.00	
15730.00†	90.000	89.024	6966.00	6996.68	691.02	6963.71	40.5308132	-104.4971932	0.00	
15830.00†	90.000	89.024	6966.00	7096.48	692.72	7063.70	40.5308147	-104.4968335	0.00	
15930.00†	90.000	89.024	6966.00	7196.28	694.42	7163.68	40.5308163	-104.4964737	0.00	
16030.00†	90.000	89.024	6966.00	7296.08	696.13	7263.67	40.5308179	-104.4961140	0.00	
16130.00†	90.000	89.024	6966.00	7395.88	697.83	7363.65	40.5308194	-104.4957543	0.00	
16230.00†	90.000	89.024	6966.00	7495.68	699.53	7463.64	40.5308210	-104.4953945	0.00	
16330.00†	90.000	89.024	6966.00	7595.48	701.23	7563.62	40.5308226	-104.4950348	0.00	
16430.00†	90.000	89.024	6966.00	7695.29	702.94	7663.61	40.5308241	-104.4946751	0.00	
16530.00†	90.000	89.024	6966.00	7795.09	704.64	7763.60	40.5308257	-104.4943154	0.00	
16630.00†	90.000	89.024	6966.00	7894.89	706.34	7863.58	40.5308272	-104.4939556	0.00	
16730.00†	90.000	89.024	6966.00	7994.69	708.04	7963.57	40.5308288	-104.4935959	0.00	
16830.00†	90.000	89.024	6966.00	8094.49	709.75	8063.55	40.5308304	-104.4932362	0.00	
16930.00†	90.000	89.024	6966.00	8194.29	711.45	8163.54	40.5308319	-104.4928764	0.00	
17030.00†	90.000	89.024	6966.00	8294.09	713.15	8263.52	40.5308335	-104.4925167	0.00	
17130.00†	90.000	89.024	6966.00	8393.89	714.85	8363.51	40.5308350	-104.4921570	0.00	
17230.00†	90.000	89.024	6966.00	8493.69	716.56	8463.49	40.5308366	-104.4917972	0.00	
17330.00†	90.000	89.024	6966.00	8593.49	718.26	8563.48	40.5308381	-104.4914375	0.00	
17430.00†	90.000	89.024	6966.00	8693.30	719.96	8663.46	40.5308397	-104.4910778	0.00	



Planned Wellpath Report

Cecil AB35-655 (REV-A.1) PWP

Page 6 of 7



REFERENCE WELLPATH IDENTIFICATION			
Operator	NOBLE ENERGY, INC	Well	Cecil AB35-655
Field	WELD COUNTY (NOBLE NAD 83 GRID)	API/Legal	
Facility	SEC.35-T07N-R64W	Wellbore	Cecil AB35-655 PWB
Slot	SLOT#04 Cecil AB35-655 (2393'FSL & 1244'FWL,SEC.35)		

WELLPATH DATA (184 stations) † = interpolated, ‡ = extrapolated station										
MD [ft]	Inclination [°]	Azimuth [°]	TVD [ft]	Vert Sect [ft]	North [ft]	East [ft]	Latitude	Longitude	DLS [°/100ft]	Comments
17530.00†	90.000	89.024	6966.00	8793.10	721.66	8763.45	40.5308412	-104.4907181	0.00	
17630.00†	90.000	89.024	6966.00	8892.90	723.37	8863.44	40.5308428	-104.4903583	0.00	
17730.00†	90.000	89.024	6966.00	8992.70	725.07	8963.42	40.5308443	-104.4899986	0.00	
17813.77	90.000	89.024	6966.00‡	9076.30	726.49	9047.18	40.5308456	-104.4896973	0.00	BHL

HOLE & CASING SECTIONS - Ref Wellbore: Cecil AB35-655 PWB      Ref Wellpath: Cecil AB35-655 (REV-A.1) PWP									
String/Diameter	Start MD [ft]	End MD [ft]	Interval [ft]	Start TVD [ft]	End TVD [ft]	Start N/S [ft]	Start E/W [ft]	End N/S [ft]	End E/W [ft]
9.625in Casing Surface	30.00	1950.00	1920.00	30.00	1950.00	0.00	0.00	0.00	0.00

TARGETS									
Name	MD [ft]	TVD [ft]	North [ft]	East [ft]	Grid East [US ft]	Grid North [US ft]	Latitude	Longitude	Shape
SEC.35-T07N-R64W OGDG 3	N/A	0.00	-1.23	-111.19	3271672.55	1437099.89	40.5291300	-104.5226700	polygon
	2D Polygon: dimensions not calculated								
SEC.36- T07N-R64W OGDG 3	N/A	0.00	-1.23	-111.19	3271672.55	1437099.89	40.5291300	-104.5226700	polygon
	2D Polygon: dimensions not calculated								
Cecil AB35-655 BHL Rev-1 (2314'FSL & 200'FEL,SEC.36)	N/A	6966.00	726.49	9047.18	3280830.61	1437827.58	40.5308456	-104.4896973	point
2) Cecil AB35-655 BHL Rev-2 (2314'FNL & 200'FEL,SEC.36)	17813.77	6966.00	726.49	9047.18	3280830.61	1437827.58	40.5308456	-104.4896973	point
1) Cecil AB35-655 LP Rev-1 (2311'FNL & 200'FWL,SEC.35)	7714.88	6966.00	554.56	-1050.24	3270733.52	1437655.65	40.5306838	-104.5260259	point

SURVEY PROGRAM - Ref Wellbore: Cecil AB35-655 PWB      Ref Wellpath: Cecil AB35-655 (REV-A.1) PWP				
Start MD [ft]	End MD [ft]	Positional Uncertainty Model	Log Name/Comment	Wellbore
30.00	17813.77	OWSG MWD rev2 (MS+IFR1)		Cecil AB35-655 PWB



Planned Wellpath Report  
Cecil AB35-655 (REV-A.1) PWP  
Page 7 of 7



REFERENCE WELLPATH IDENTIFICATION			
Operator	NOBLE ENERGY, INC	Well	Cecil AB35-655
Field	WELD COUNTY (NOBLE NAD 83 GRID)	API/Legal	
Facility	SEC.35-T07N-R64W	Wellbore	Cecil AB35-655 PWB
Slot	SLOT#04 Cecil AB35-655 (2393'FSL & 1244'FWL,SEC.35)		

DESIGN COMMENTS				
MD [ft]	Inclination [°]	Azimuth [°]	TVD [ft]	Comment
30.00	0.000	284.661	30.00	SHL
2000.00	0.000	284.661	2000.00	End of Tangent
3314.94	26.299	284.661	3269.25	Build (XS)
6434.27	26.299	284.661	6065.72	KOP
7714.88	90.000	89.024	6966.00	LP/TPZ
17813.77	90.000	89.024	6966.00	BHL