



Service Order #: 523032

Date: 2/17/2023

Well Name:	Location:	County:	St:	API#	
UPRC 5-9L		WELD	CO		
Formation:	Cement Via:	Type Of Service:	Well Type/Age:	AFE#:	PO#:
	TUBING	SUSSEX AGM			

Customer: OXY USA INC

Remarks: H2O TEMP 67*, PH 7, CHLORIDES 0 PPM
200 SKS, 41.7 BBLS, DISPLACE 9.4 BBLS
CICR @ 3510' / PERF @ 3950/3450'
ETOC @ 3390'

Customer Rep: JOSE

PH:

WELBORE DATA				
Type	Size	Weight	Depth	Volume
Surface Casing:				
Production Casing:	3.5	0	0.0	0
Intermediate:	0	0	0.0	0
Drill Pipe:	0	0	0.0	0
Tubing:	2.063	0		

Type	Size	Depth (Top)	Depth (Bot)	Volume
Liner:				0
Open Hole:	0.0			

OTHER DATA		
BHT	Max PSI	Total Depth

Packer or Retainer Type/Depth:

--	--

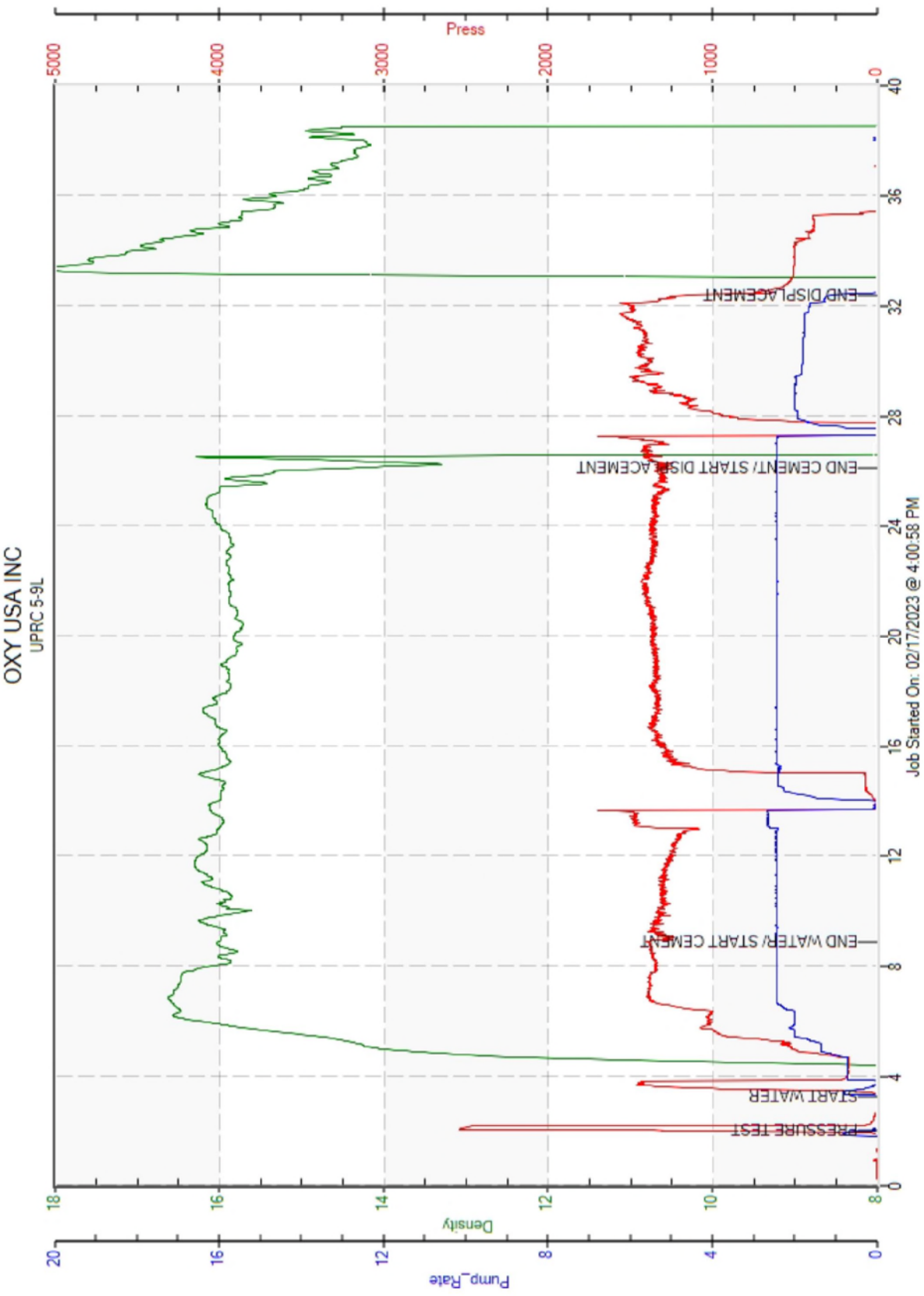
Perf Depths:	#	TotalPerf
	0	
	0	
	0	

TIME	PUMP RATES		DENSITY	PRESS	STG TOT	TOTAL	REMARKS
	WATER (gpm)	PUMP (bpm)	(lb/gal)	(psi)	(bbbls)	(bbbls)	
16:03	9	0.1	0.00	2540	0.1	0.1	PRESSURE TEST
16:04	0	0.0	0.00	0	0.1	0.1	START WATER
16:09	0	2.4	16.02	1408	10.0	10.0	END WATER/ START CEMENT
16:27	0	2.4	14.09	1288	41.2	51.3	END CEMENT/ START DISPLACEMENT
16:33	0	1.1	0.00	1127	9.4	62.8	END DISPLACEMENT

Summary

Max Fl. Rate	Avg Fl. Rate	Max Psi	Avg Psi
2.4	2.2	2,540	1,198

Customer Acknowledgement:	Service Rating:	Cementer:	PRODUCTS USED
	<input type="checkbox"/> Satisfactory <input type="checkbox"/> Unsatisfactory	JEREMIE	SUSSEX AGM, CLASS G CMT, 2% GYPSUM(EXPANSION), .4% C16A(LATEX), .25% C17(FLUID LOSS), .3% C35(DISPERSANT), 1.17 YIELD, 5.05 GAL/SKS, 15.8 LBS/GAL





Service Order #: 523045

Date: 2/21/2023

Well Name:	Location:	County:	St:	API#	
UPRC 5-9L		WELD	CO		
Formation:	Cement Via:	Type Of Service:	Well Type/Age:	AFE#:	PO#:
	TUBING	SQUEEZE	REWORK		

Customer: OXY

Remarks: LOWER AGM, 1.2 YIELD, 5.15 GPS, 15.8 PPG
310 SKS, 66.2 BBLS, @2800'-1940' ETOC CASING
58.4 BBLS THROUGH PERFS
TEMP-70.8°F, PH-7, CHLORIDES-0PPM

Customer Rep: J.CASTILLIO

PH:

WELLBORE DATA

Type	Size	Weight	Depth	Volume
Surface Casing:				
Production Casing:	3.5	7.7		0
Intermediate:	0	0	0.0	0
Drill Pipe:	0	0	0.0	0
Tubing:	2.063	3.25	2,060.0	

Type	Size	Depth (Top)	Depth (Bot)	Volume
Liner:				0
Open Hole:	7.9			

OTHER DATA

BHT	Max PSI	Total Depth
	1,500	2,800

Packer or Retainer Type/Depth:

RETAINER	2,060
----------	-------

Perf Depths: # TotalPerf

2,000.0	2,800.0	0	
		0	
		0	

TIME	PUMP RATES		DENSITY	PRESS	STG TOT	TOTAL	REMARKS
	WATER (gpm)	PUMP (bpm)	(lb/gal)	(psi)	(bbls)	(bbls)	
0:00	0	0.1	7.91	2358	29.0	33.9	PSI TEST
0:00	0	0.0	7.91	0	0.0	0.0	H2O SPACER
0:00	1	0.9	15.65	158	2.6	2.6	START CEMENT
0:00	82	3.0	15.70	1468	3.5	6.2	INCREASE RATE
0:00	0	2.0	13.39	1208	66.5	69.2	END CEMENT START DISPLACEMENT
0:00	0	0.1	7.91	451	5.0	74.6	OFFLINE

Summary

Max Fl. Rate	Avg Fl. Rate	Max Psi	Avg Psi
3.0	2.3	2,789	1,045

Customer Acknowledgement:

Service Rating:

Cementer:

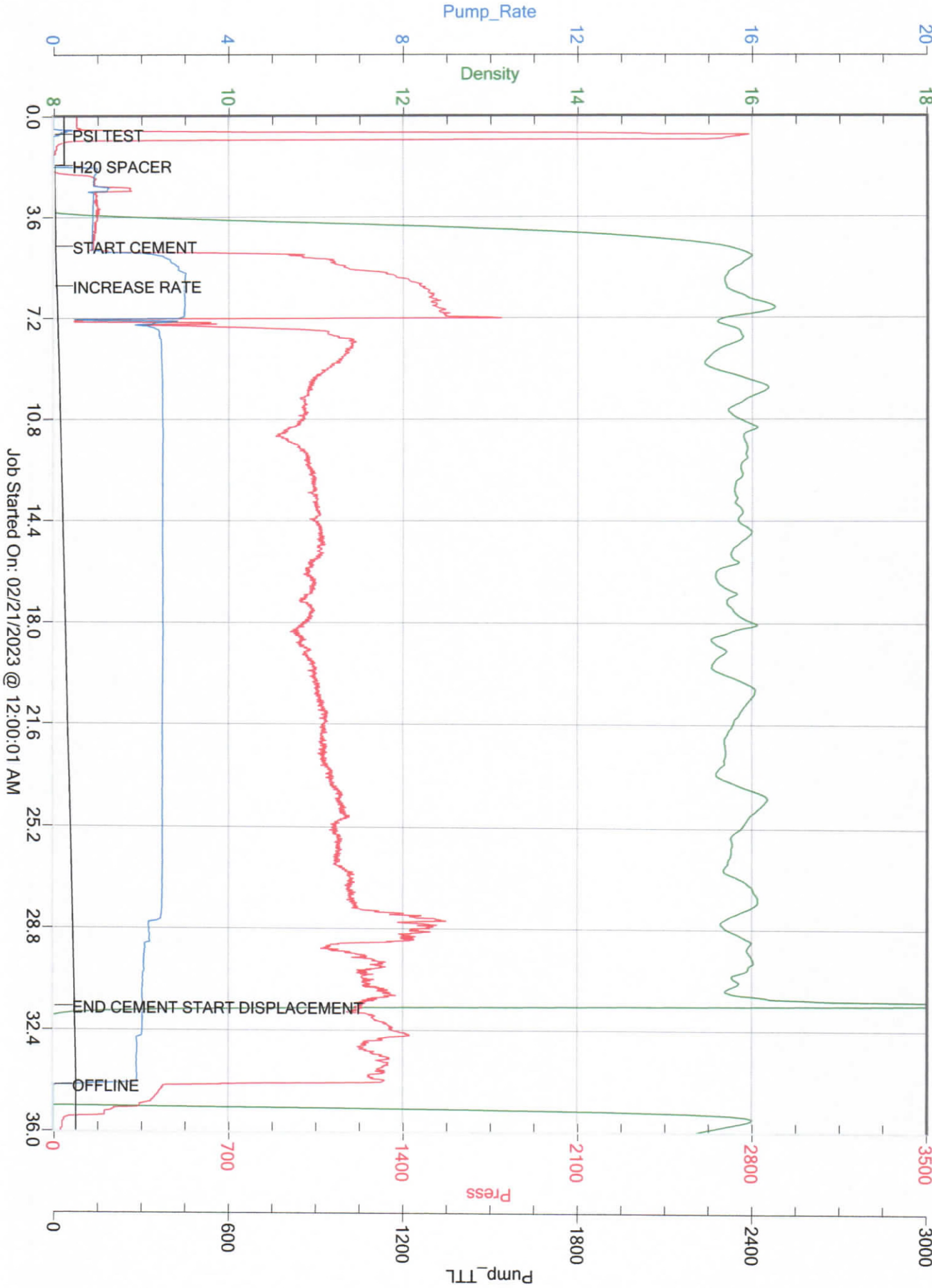
- ☐ Satisfactory
☐ Unsatisfactory

A.HOWELL

PRODUCTS USED

CLASS G CMT, 4% GYPSUM, 1% CaCl, .4% LATEX

CUSTOMER
WELL_NAME



Job Started On: 02/21/2023 @ 12:00:01 AM

Old County, CO
IT #
Company Rep
CASTILLIO



CEMENT REPORT PAGE 1

Service Order #: 523067 Date: 2/23/2023

Well Name: UPRC 5-9L Location: County: St: API#
Formation: Cement Via: CASING Type Of Service: PLUG Well Type/Age: AFE#: PO#

Customer: OCCIDENTAL

Remarks: H2O TEMP 69*, PH 7, CHLORIDES 54 PPM
305 SKS, 65.3 BBLS, DISPLACE 8.2 BBLS
ETOC 1700' - 900'

Customer Rep: JOSE C. PH:

WELLBORE DATA				
Type	Size	Weight	Depth	Volume
Surface Casing:				
Production Casing:	3.5	7.7	1,700.0	0
Intermediate:	0	0	0.0	0
Drill Pipe:	0	0	0.0	0
Tubing:		0		
Type	Size	Depth (Top)	Depth (Bot)	Volume
Liner:				0
Open Hole:	7.9		1,700.0	

OTHER DATA		
BHT	Max PSI	Total Depth
Packer or Retainer Type/Depth:		
Perf Depths:	#	Total Perf
1,700.0	1	
	0	
	0	

TIME	PUMP RATES		DENSITY	PRESS	STG TOT	TOTAL	REMARKS
	WATER (gpm)	PUMP (bpm)	(lb/gal)	(psi)	(bbbls)	(bbbls)	
13:29	0	0.1	0.00	2191	0.1	0.1	PSI TEST
13:30	0	0.2	0.00	28	0.1	0.1	H2O SPACER
13:39	0	1.5	15.71	80	9.9	9.9	END SPACER / START CMT
13:54	0	4.5	16.02	385	65.3	75.3	END CMT / START DISPLACEMENT
13:57	0	0.0	0.00	108	8.3	86.4	OFF LINE

Summary			
Max FI. Rate	Avg FI. Rate	Max Psi	Avg Psi
4.5	2.3	2,195	177

Customer Acknowledgement: Service Rating: Cementer: BOHLEN PRODUCTS USED
LOWER AGM, CLASS G CMT, 4% GYPSUM, 1% CaCl₂, .4% C16A
LATEX, 1.20 YIELD, 5.149 GAL/SKS, 15.8 LBS/GAL



Service Order #: 524052

Date: 2/24/2023

Well Name:	Location:	County:	St:	API#	
UPRC 5-9L		WELD	CO		
Formation:	Cement Via:	Type Of Service:	Well Type/Age:	AFE#:	PO#:
	TUBING	PLUG	REWORK		

Customer: OXY

Remarks: UPPER AGM, 1.21 YIELD, 5.15 GPS, 15.8 PPG
115 SKS, 24.7 BBLS, @ 664'-260' ETOC CASING
TEMP-70.7°F, PH-7, CHLORIDES-0PPM

Customer Rep: J.CASTILLIO

PH:

WELLBORE DATA				
Type	Size	Weight	Depth	Volume
Surface Casing:	8.625	24	509.0	
Production Casing:	3.5	7.7	560.0	0
Intermediate:	0	0	0.0	0
Drill Pipe:	0	0	0.0	0
Tubing:	2.063	3.25	664.0	

Type	Size	Depth (Top)	Depth (Bot)	Volume
Liner:				0
Open Hole:	7.9	509.0	560.0	

OTHER DATA		
BHT	Max PSI	Total Depth
	385	664

Packer or Retainer Type/Depth:

Perf Depths: # TotalPerf

	0	
	0	
	0	

TIME	PUMP RATES		DENSITY	PRESS	STG TOT	TOTAL	REMARKS
	WATER (gpm)	PUMP (bpm)	(lb/gal)	(psi)	(bbbls)	(bbbls)	
0:00	0	0.0	7.91	0	0.0	0.0	ANNOTATION
0:00	0	0.0	7.91	801	0.7	0.7	PSI TEST
0:00	0	0.0	7.91	0	1.7	1.7	H2O SPACER
0:00	69	1.2	15.72	46	4.9	4.9	START CEMENT
0:00	62	2.9	15.72	322	3.1	8.0	INCREASE RATE
0:00	0	2.2	13.00	207	24.8	29.8	ENDCEMENT START DISPLACEMENT
0:00	0	0.0	12.79	41	1.3	31.2	OFFLINE

Summary

Max Fl. Rate	Avg Fl. Rate	Max Psi	Avg Psi
2.9	2.1	1,427	221

Customer Acknowledgement:

Service Rating:

- ☐ Satisfactory
☐ Unsatisfactory

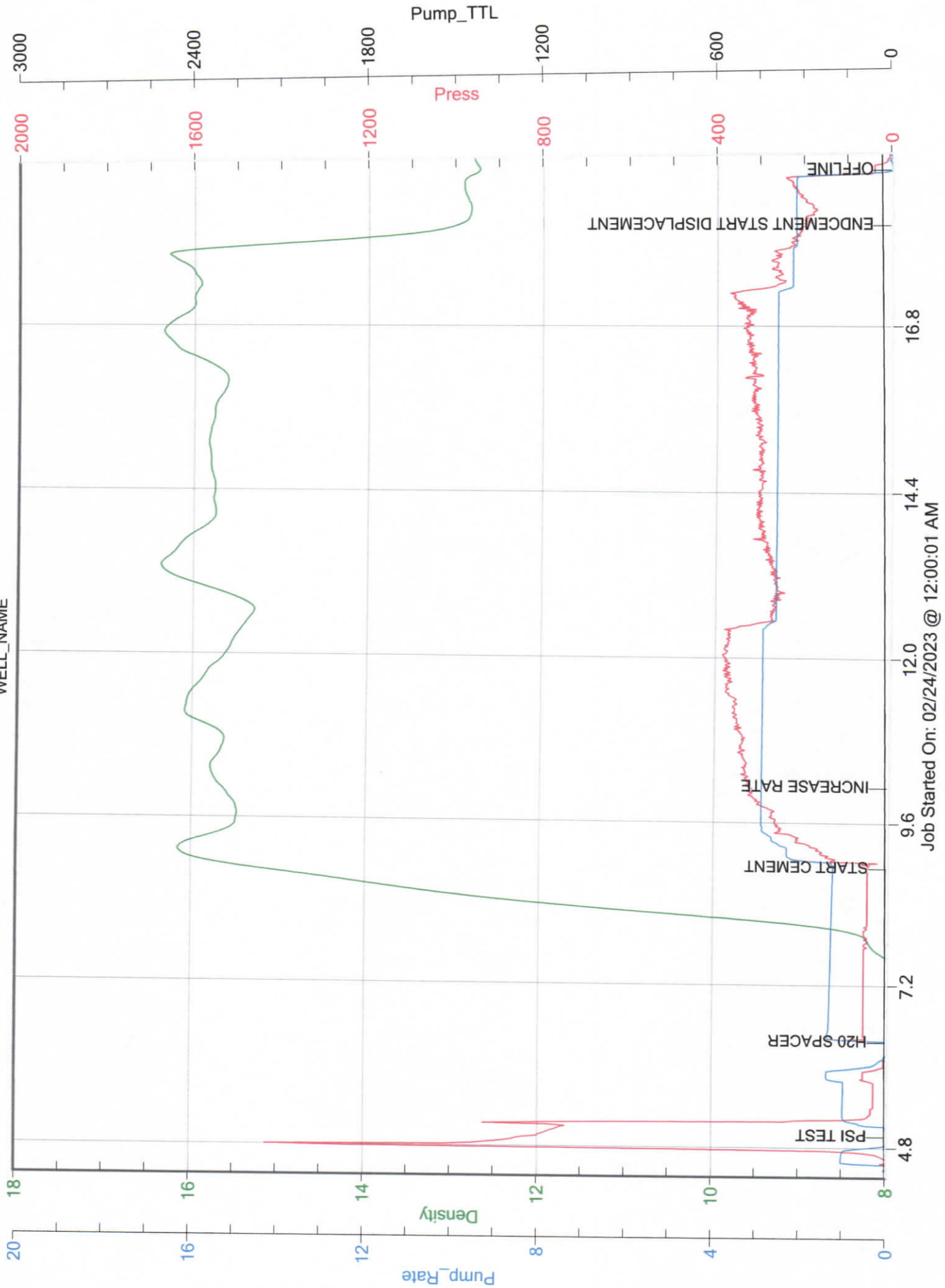
Cementer:

A.HOWELL

PRODUCTS USED

CLASS GCMT, 4% GYPSUM, 1.5% CaCl, .4% LATEX

CUSTOMER
WELL_NAME





Service Order #: 525212

Date: 2/27/2023

Well Name:	Location:	County:	St:	API#	
UPRC 5-9L		WELD	CO		
Formation:	Cement Via:	Type Of Service:	Well Type/Age:	AFE#:	PO#:
	TUBING	PLUG	REWORK		

Customer: OXY

Remarks: SURF AGM, 1.21 YIELD, 5.17 GPS, 15.8 PPG
90 SKS, 19.4 BBLs, @260'-0'
TEMP-72.3°F, PH-7, CHLORIDES-0PPM

Customer Rep: J.CASTILLO

PH:

WELLBORE DATA

Type	Size	Weight	Depth	Volume
Surface Casing:	8.625	24		
Production Casing:	0	0	0.0	0
Intermediate:	0	0	0.0	0
Drill Pipe:	0	0	0.0	0
Tubing:	2.063	3.25	260.0	

OTHER DATA

BHT	Max PSI	Total Depth
	200	260

Packer or Retainer Type/Depth:

--	--

Type	Size	Depth (Top)	Depth (Bot)	Volume
Liner:				0
Open Hole:	0.0			

Perf Depths:	#	TotalPerf
	0	
	0	
	0	

TIME	PUMP RATES		DENSITY	PRESS	STG TOT	TOTAL	REMARKS
	WATER (gpm)	PUMP (bpm)	(lb/gal)	(psi)	(bbls)	(bbls)	
0:00	0	0.0	7.91	814	50.7	80.6	PSI TEST
0:00	0	0.0	7.91	0	0.0	0.0	H2OSPACER
0:00	55	1.0	15.65	12	5.1	5.1	START CEMET
0:00	55	3.0	15.92	111	0.3	5.4	INCREASE RATE
0:00	0	0.0	11.59	23	19.0	24.1	OFFLINECEMENT TO SURFACE

Summary

Max Fl. Rate	Avg Fl. Rate	Max Psi	Avg Psi
3.0	5.1	1,024	86

Customer Acknowledgement:

Service Rating: Cementer:

- ☐ Satisfactory
☐ Unsatisfactory

A.HOWELL

PRODUCTS USED

CLASS G CMT, 4% GYPSUM, 2% CaCl, .4% LATEX