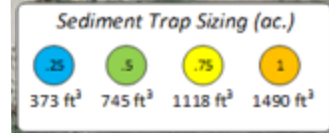
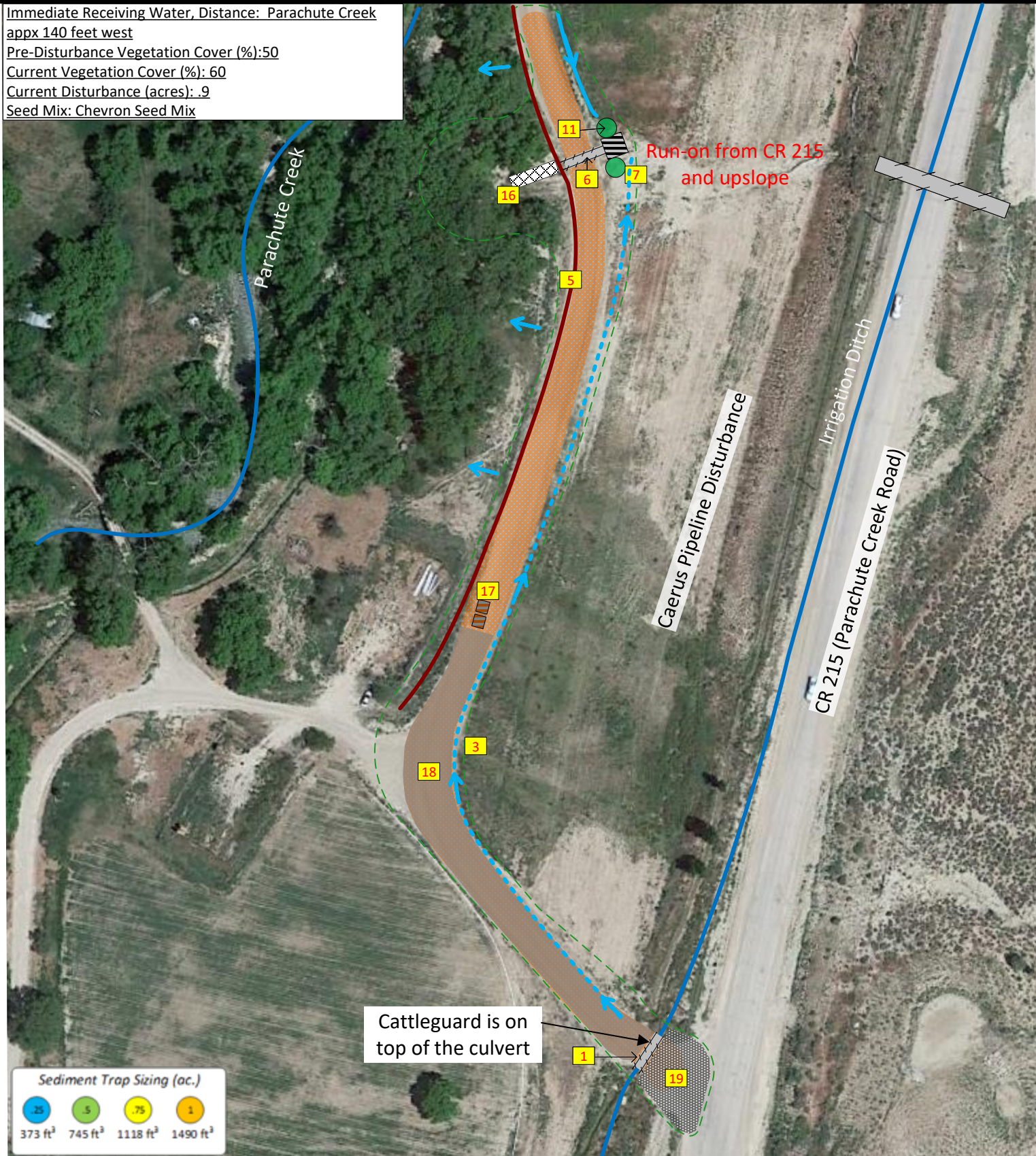


Immediate Receiving Water, Distance: Parachute Creek  
 appx 140 feet west  
 Pre-Disturbance Vegetation Cover (%): 50  
 Current Vegetation Cover (%): 60  
 Current Disturbance (acres): .9  
 Seed Mix: Chevron Seed Mix



LEGEND	
	CMP Culvert
	Earthen Berm
	Construction Boundary/ Disturbance
	Sediment Trap w/ Armored Inlet & Outlet (see color chart for sizing)
	Roadside Ditch
	Roadside Ditch w/ VCD Check Dams*
	Culvert Protection
	Wattle
	Tracking Pad
	BMP Number
	Straw Bales
	Rip-Rap
	Stabilized, Un- paved Road Surface
	Surface Flow

**Cut and Fill  
 slope  
 revegetation/  
 permanent  
 vegetation in  
 progress**

Jersey barriers and berms on road near  
 sediment traps/culvert inlets are safety  
 CMs not stormwater CMs.

\*VCD Check Dams will be added to or removed  
 from roadside ditches as needed throughout  
 the year. Rock checks are installed in all  
 roadside ditches per CM detail. Spacing may  
 vary according to grade of the roadside ditch.  
 Rock check dams are used in conjunction with  
 terminal roadside CMs

**SITE MAP – SECTION 1  
 GARDEN GULCH CLIFF ROAD  
 GARFIELD COUNTY, COLORADO**

Lat. 39.530 Long. -108.125  
 NENE SECTION 17, TOWNSHIP 6s, RANGE 96W



Edited by TJ on  
 4/4/2023