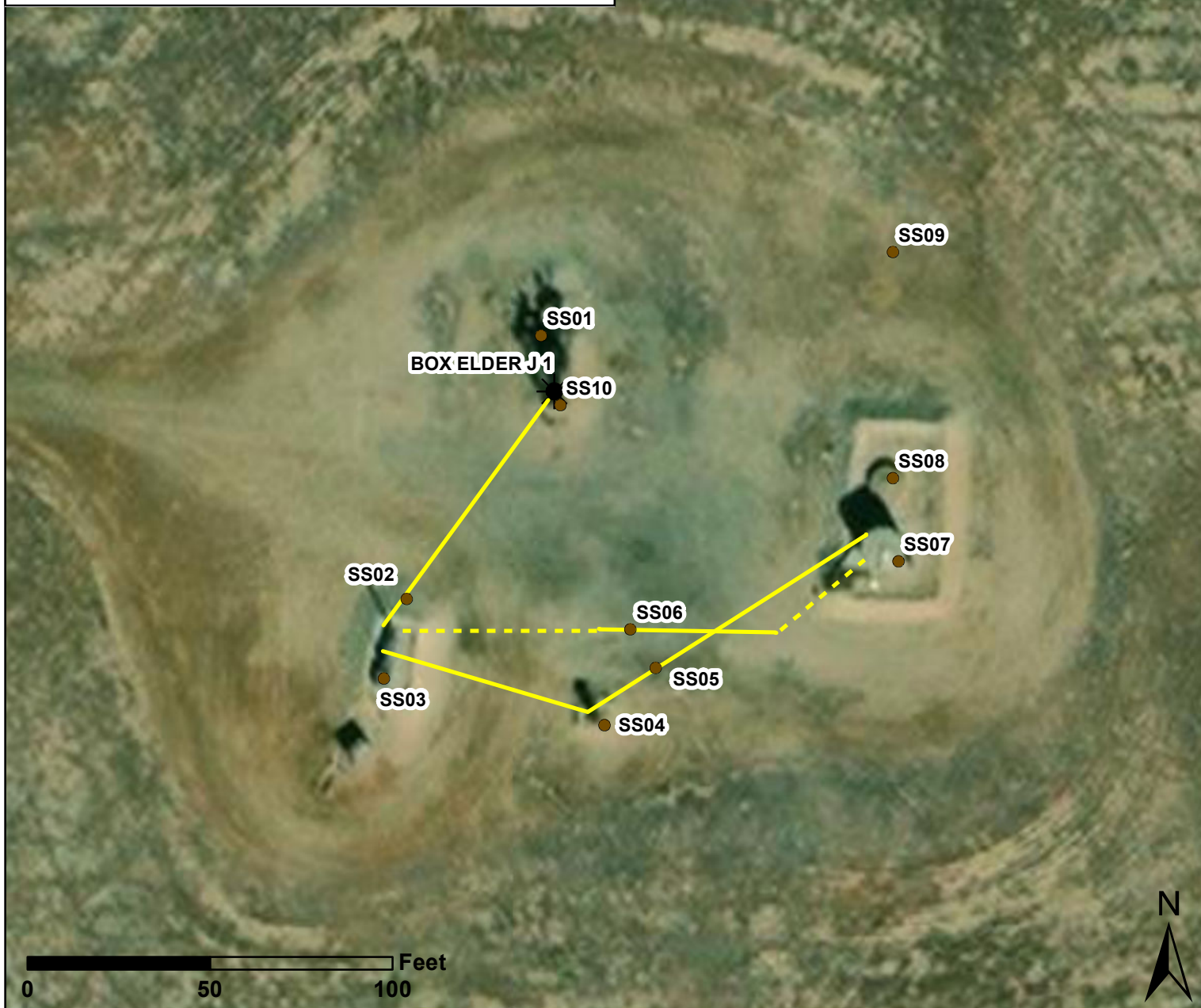


City and County of Denver and Adams County, CO



### Legend

- Soil Sample
- Flowline
- - - Approximate Flowline
- ★ Plugged & Abandoned Well



Mapping by: K. O'Brien, 2/13/2023

Coordinate System:

NAD 1983 UTM Zone 13 N

Location: NWSW Sec 32 T1S R65W 6th PM

**Figure 1**  
**Box Elder J #1**  
**Project Map**  
**City & County of Denver**