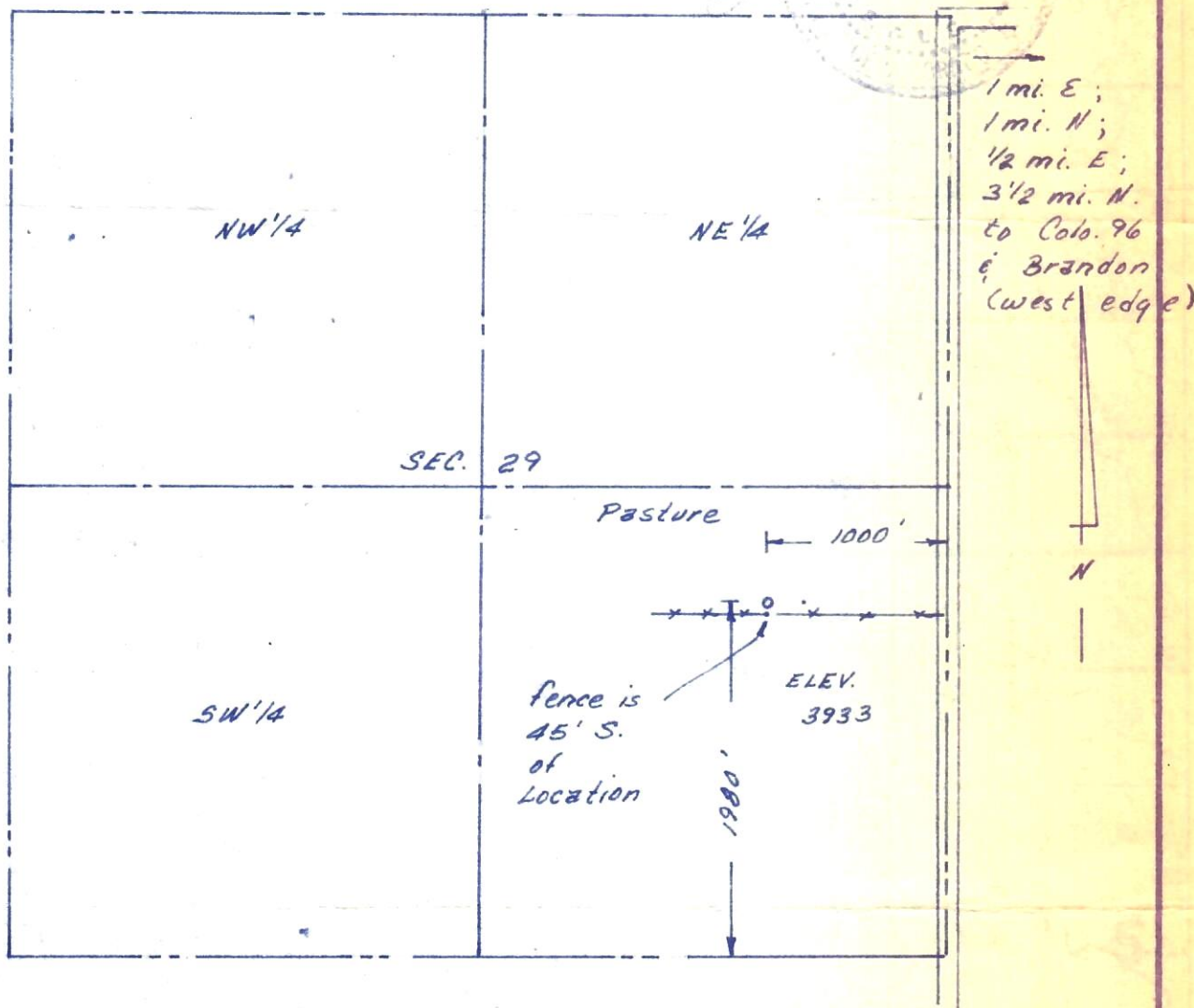




The accompanying plat is an accurate representation of the location of a proposed well. This location may be described as a point 1980 feet north of the south line, and 1000 feet west of the east line of Section 29, Township 19 S Range 45 W of the 6th P.M., KIOWA County, COLORADO. The surface elevation at this point is 3933 feet m.s.l.



SCALE 1"=1000'

- SURVEYED POINT
- REFERENCE STAKE (45' S, 200' E)
SE 1/4 SEC. 29, T19 S, R45 W

HARMON
ENGINEERING
SERVICES

KCGA # 1-29

MURFIN DRILLING CO.

KIOWA CO., COLORADO 13 FEB. 1984

