

Wiepking-Fullerton Energy LLC, Big Wampum 1
073-06543

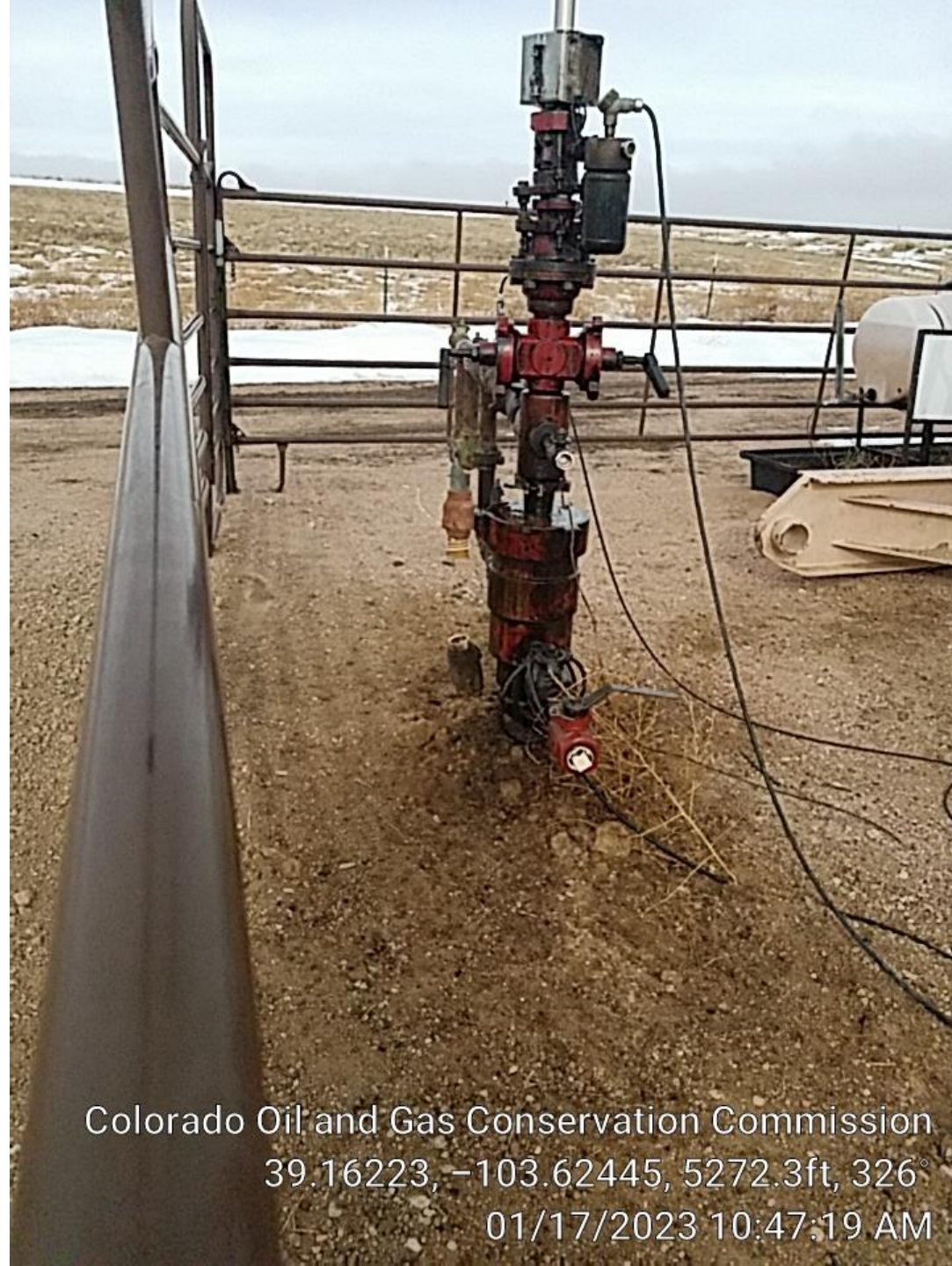
Inspection #706700229

1/17/2023

Routine Field Inspection



Colorado Oil and Gas Conservation Commission
39.16228, -103.62437, 5292.0ft, 25°
01/17/2023 10:47:04 AM



Colorado Oil and Gas Conservation Commission
39.16223, -103.62445, 5272.3ft, 326°
01/17/2023 10:47:19 AM



Colorado Oil and Gas Conservation Commission
39.16219, -103.62449, 5272.3ft, 6°
01/17/2023 10:47:38 AM



Colorado Oil and Gas Conservation Commission
39.16218, -103.62449, 5269.0ft, 342°
01/17/2023 10:47:47 AM



Jetted,
fenced
area to
the west
of well.

Colorado Oil and Gas Conservation Commission
39.16218, -103.62449, 5269.0ft, 342°
01/17/2023 10:47:47 AM

Jetted,
fence area
to the east
of well.



Colorado Oil and Gas Conservation Commission
39.16216, -103.62447, 5262.5ft, 114°
01/17/2023 10:47:54 AM



Colorado Oil and Gas Conservation Commission
39.16446, -103.62661, 5305.1ft, 99°
01/17/2023 10:36:45 AM



Colorado Oil and Gas Conservation Commission
39.16448, -103.62663, 5301.8ft, 356°
01/17/2023 10:36:54 AM



Colorado Oil and Gas Conservation Commission

39.16451, -103.62667, 5282.2ft, 43°

01/17/2023 10:37:08 AM



Colorado Oil and Gas Conservation Commission
39.16456, -103.62671, 5285.4ft, 45°
01/17/2023 10:37:20 AM



Oil on access road at
loadout.

Colorado Oil and Gas Conservation Commission
39.16455, -103.62674, 5278.9ft, 360°
01/17/2023 10:37:35 AM



No bullplug or
cap on oil
loadout.

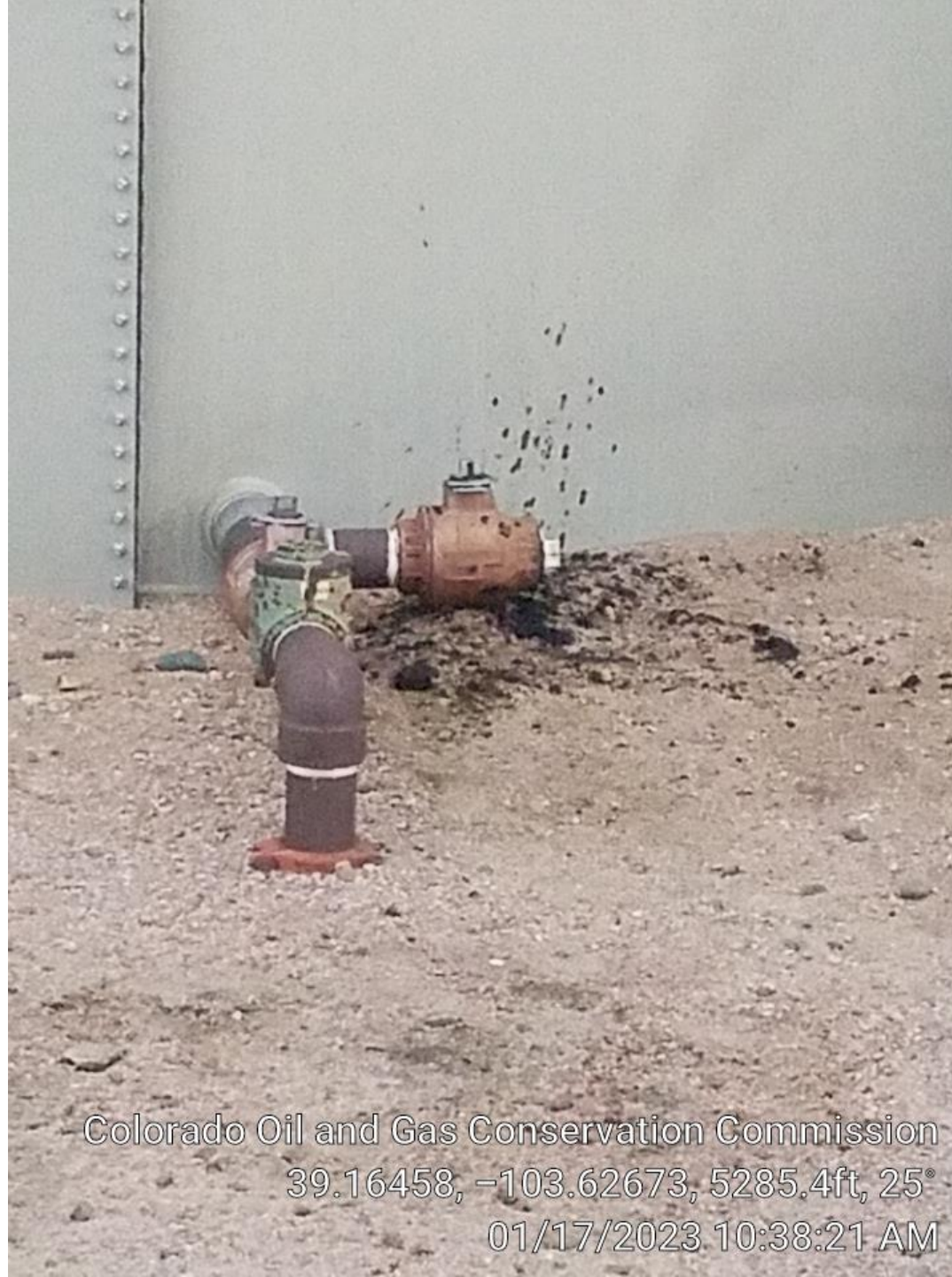
Colorado Oil and Gas Conservation Commission
39.16458, -103.62673, 5285.4ft, 20°
01/17/2023 10:37:48 AM



Colorado Oil and Gas Conservation Commission
39.16458, -103.62673, 5285.4ft, 17°
01/17/2023 10:37:59 AM



Colorado Oil and Gas Conservation Commission
39.16458, -103.62673, 5285.4ft, 37°
01/17/2023 10:38:07 AM



Fix mechanical conditions on this tank valve on south side of south tanks.

Colorado Oil and Gas Conservation Commission
39.16458, -103.62673, 5285.4ft, 25°
01/17/2023 10:38:21 AM



Colorado Oil and Gas Conservation Commission
39.16458, -103.62674, 5282.2ft, 49°
01/17/2023 10:38:38 AM



Colorado Oil and Gas Conservation Commission
39.16458, -103.62675, 5285.4ft, 58°
01/17/2023 10:38:46 AM



Colorado Oil and Gas Conservation Commission
39.16463, -103.62676, 5285.4ft, 47°
01/17/2023 10:39:00 AM



Colorado Oil and Gas Conservation Commission
39.16475, -103.62659, 5292.0ft, 201°
01/17/2023 10:39:55 AM



Colorado Oil and Gas Conservation Commission
39.16475, -103.62658, 5285.4ft, 233°
01/17/2023 10:40:02 AM



Colorado Oil and Gas Conservation Commission
39.1647, -103.62658, 5292.0ft, 233°
01/17/2023 10:40:15 AM



Colorado Oil and Gas Conservation Commission
39.16446, -103.62661, 5305.1ft, 99°
01/17/2023 10:36:45 AM



Colorado Oil and Gas Conservation Commission

39.16441, -103.62632, 5295.3ft, 235°

01/17/2023 10:41:16 AM



Colorado Oil and Gas Conservation Commission
39.16432, -103.62631, 5285.4ft, 300°
01/17/2023 10:41:49 AM



Colorado Oil and Gas Conservation Commission
39.16432, -103.62632, 5282.2ft, 334°
01/17/2023 10:41:56 AM

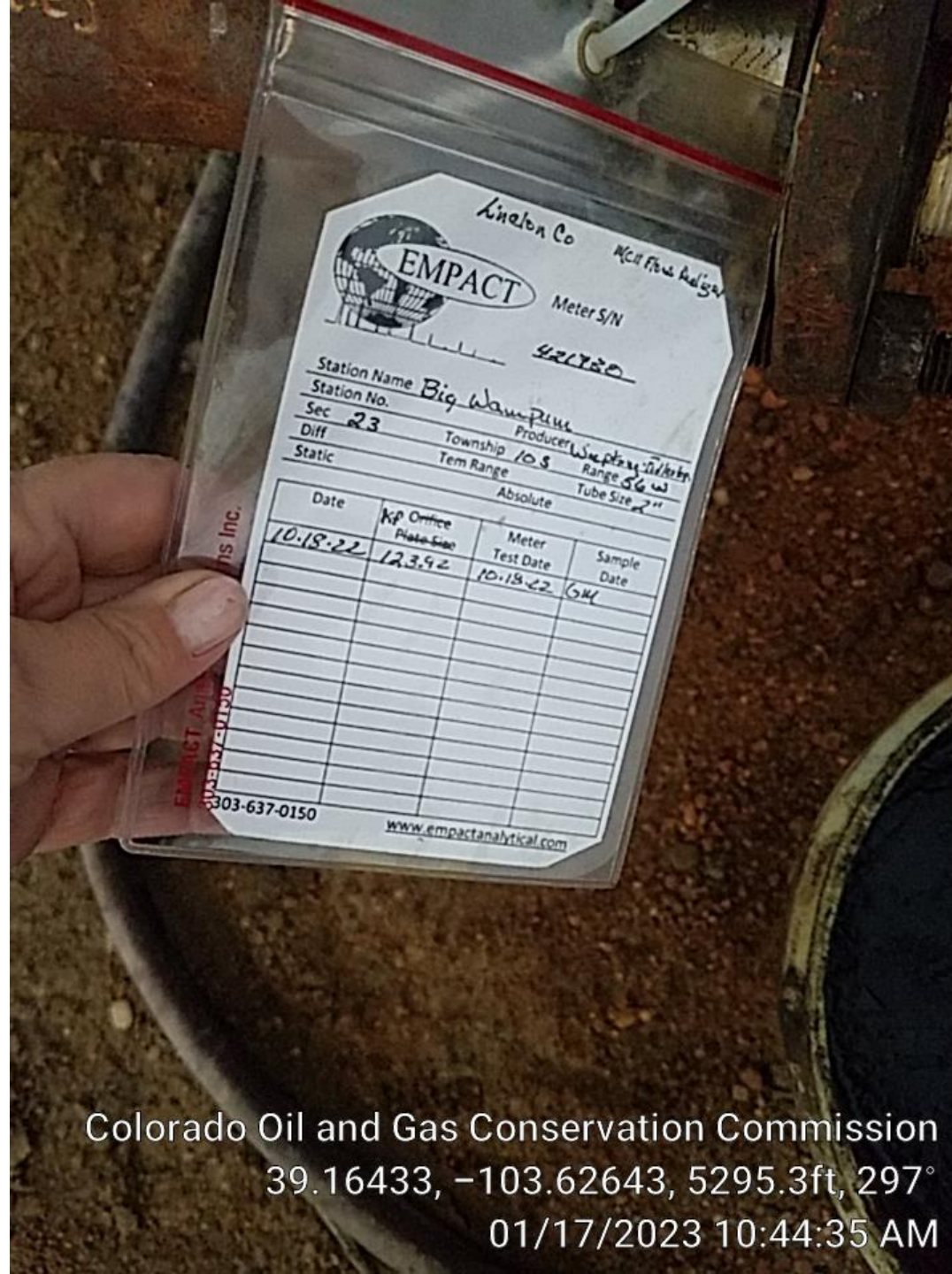


Colorado Oil and Gas Conservation Commission
39.16437, -103.62645, 5292.0ft, 176°
01/17/2023 10:44:06 AM



Gas meter.

Colorado Oil and Gas Conservation Commission
39.16434, -103.62645, 5288.7ft, 294°
01/17/2023 10:44:24 AM



Calibration card.

Colorado Oil and Gas Conservation Commission
39.16433, -103.62643, 5295.3ft, 297°
01/17/2023 10:44:35 AM



Open topped pail needs cover
or be removed.

Colorado Oil and Gas Conservation Commission
39.16433, -103.62643, 5295.3ft, 297°
01/17/2023 10:44:35 AM



Maintain
tank battery
area.

Colorado Oil and Gas Conservation Commission
39.16433, -103.62629, 5275.6ft, 313°
01/17/2023 10:41:39 AM