

NOBLE ENERGY, INC

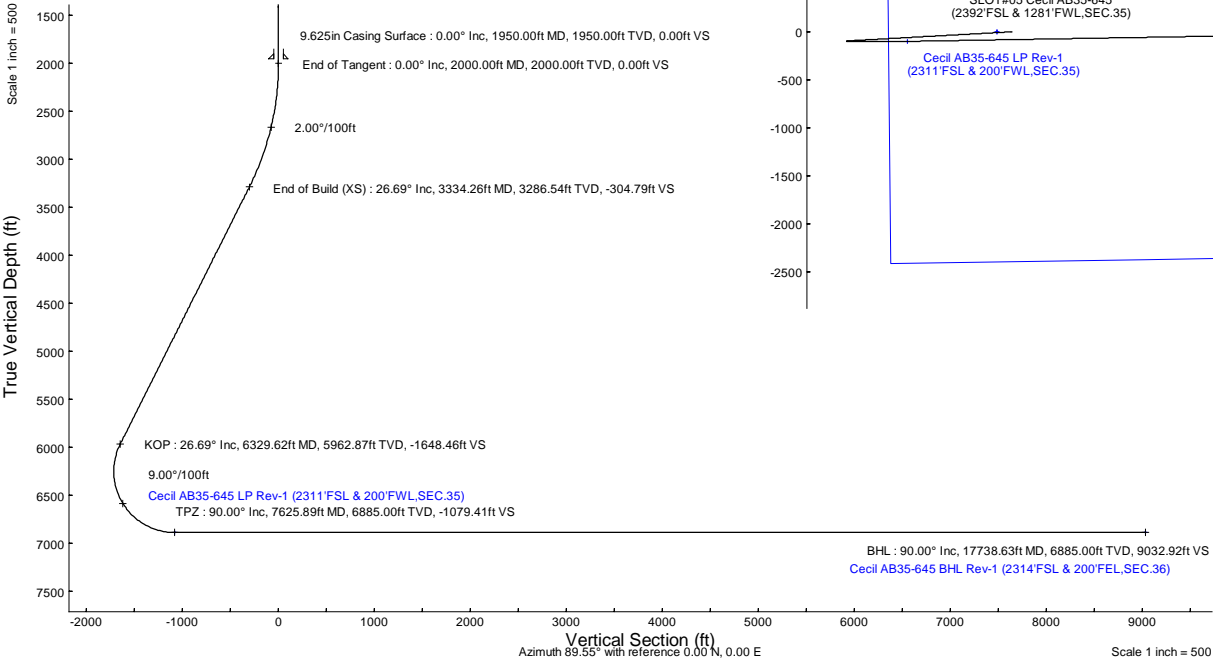
Location: COLORADO Slot: SLOT#05 Cecil AB35-645 (2392°FSL & 1281°FWL,SEC.35)

Field: WELD COUNTY (NOBLE NAD 83 GRID) Well: Cecil AB35-645

Facility: SEC.35-T07N-R64W Wellbore: Cecil AB35-645 PWB

Plot reference wellpath is Cecil AB35-645 (REV-A.0) PWP	Grid System: NAD83 / Lambert Colorado SP, Northern Zone (501), US feet
True vertical depths are referenced to (4836'GL+30'KB@4866'RKB) (RKB)	North Reference: Grid north
Reference wellpath measured depths are referenced to (4836'GL+30'KB@4866'RKB) (RKB)	Scale: True distance
(4836'GL+30'KB@4866'RKB) (RKB) to Mean Sea Level: 4866 feet	Coordinates are in feet referenced to Slot
Mean Sea Level to Ground level (At Slot: SLOT#05 Cecil AB35-645 (2392°FSL & 1281°FWL,SEC.35)): 0 feet	Depths are in feet
Offset wellpath MDs are referenced to each path's default MD datum	Created by: guenaler on 2023-01-14; Database: WA_Denver

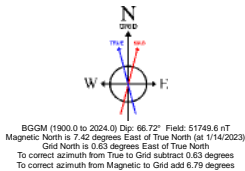
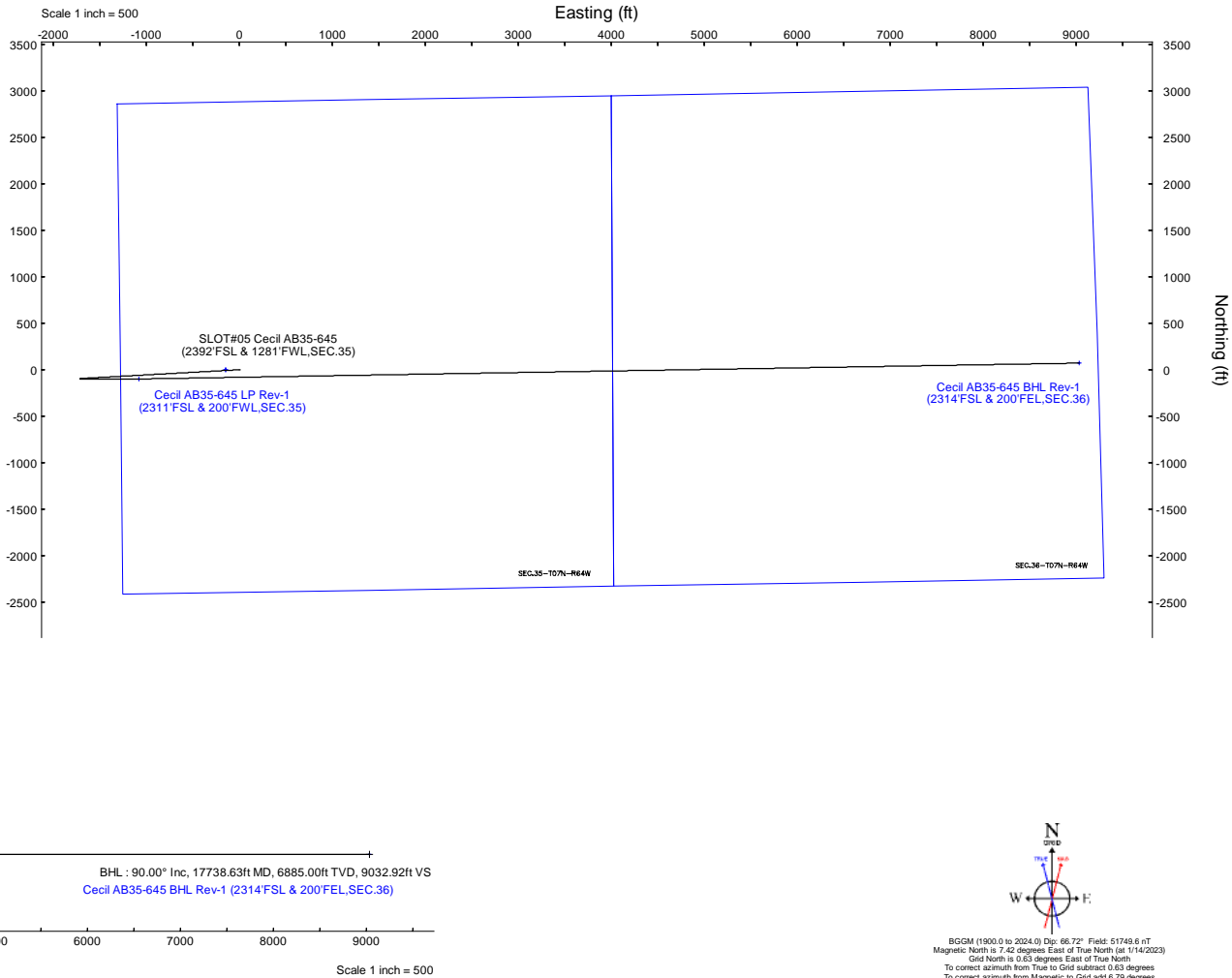
Location Information					
Facility Name			Grid East (US ft)	Grid North (US ft)	Latitude
SEC.35-T07N-R64W			3271672.548	1437099.887	40°31'44.8680"N
Slot			Grid East (US ft)	Grid North (US ft)	Latitude
SLOT#05 Cecil AB35-645 (2392°FSL & 1281°FWL,SEC.35)	Local N (ft)	Local E (ft)	147.33	3271819.869	40°31'44.8680"N
(4836'GL+30'KB@4866'RKB) (RKB) to Ground level (At Slot: SLOT#05 Cecil AB35-645 (2392°FSL & 1281°FWL,SEC.35))					104°31'19.7040"W
Mean Sea Level to Ground level (At Slot: SLOT#05 Cecil AB35-645 (2392°FSL & 1281°FWL,SEC.35))					4866ft
(4836'GL+30'KB@4866'RKB) (RKB) to Mean Sea Level					0ft
					4866ft



Well Profile Data								
Design Comment	MD (ft)	Inc (°)	Az (°)	TVD (ft)	Local N (ft)	Local E (ft)	DLS (°/100ft)	VS (ft)
SHL	30.00	0.000	266.829	30.00	0.00	0.00	0.00	0.00
End of Tangent	2000.00	0.000	266.829	2000.00	0.00	0.00	0.00	0.00
End of Build (XS)	3334.26	26.685	266.829	3286.54	-16.88	-304.67	2.00	-304.79
KOP	6329.62	26.685	266.829	5962.87	-91.28	-1647.79	0.00	-1648.46
TPZ	7625.89	90.000	89.030	6885.00	-99.45	-1078.65	9.00	-1079.41
BHL	17738.63	90.000	89.030	6885.00	71.68	9032.64	0.00	9032.92

Targets								
Name	MD (ft)	TVD (ft)	Local N (ft)	Local E (ft)	Grid East (US ft)	Grid North (US ft)	Latitude	Longitude
SEC.35-T07N-R64W OGD P 3	N/A	0.00	-1.62	-147.33	3271672.55	1437099.89	40°31'44.8680"N	104°31'21.6120"W
SEC.36-T07N-R64W OGD P 3	N/A	0.00	-1.62	-147.33	3271672.55	1437099.89	40°31'44.8680"N	104°31'21.6120"W
Cecil AB35-645 BHL Rev-1 (2314°FSL & 200°FEL,SEC.36)	17738.63	6885.00	71.68	9032.64	3280852.21	1437173.19	40°31'44.5796"N	104°29'22.7270"W
Cecil AB35-645 LP Rev-1 (2311°FSL & 200°FWL,SEC.35)	7625.89	6885.00	-99.45	-1078.65	3270741.25	1437002.06	40°31'44.0026"N	104°31'33.6860"W

Survey Program					
Start MD (ft)	End MD (ft)	Tool	Model	Log Name/Comment	Wellbore
30.00	17738.63	OWSG MWD rev2	OWSG MWD rev2 (MS+IFR1)		Cecil AB35-645 PWB





Planned Wellpath Report

Cecil AB35-645 (REV-A.0) PWP

Page 1 of 7



REFERENCE WELLPATH IDENTIFICATION			
Operator	NOBLE ENERGY, INC	Well	Cecil AB35-645
Field	WELD COUNTY (NOBLE NAD 83 GRID)	API/Legal	
Facility	SEC.35-T07N-R64W	Wellbore	Cecil AB35-645 PWB
Slot	SLOT#05 Cecil AB35-645 (2392'FSL & 1281'FWL,SEC.35)		

REPORT SETUP INFORMATION			
Projection System	NAD83 / Lambert Colorado SP, Northern Zone (501), US feet	Software System	WellArchitect® 6.0
North Reference	Grid	User	Guenaler
Scale	0.999969	Report Generated	1/14/2023 at 12:27:10 PM
Convergence at slot	0.63° East	Database	WA_Denver

WELLPATH LOCATION						
	Local coordinates		Grid coordinates		Geographic coordinates	
	North[ft]	East[ft]	Easting[US ft]	Northing[US ft]	Latitude	Longitude
Slot Location	1.62	147.33	3271819.87	1437101.51	40.5291300°	-104.5221400°
Facility Reference Pt			3271672.55	1437099.89	40.5291300°	-104.5226700°
Field Reference Pt			3000000.00	4454105.15	48.7761986°	-105.5000000°

WELLPATH DATUM			
Calculation method	Minimum curvature	(4836'GL+30'KB@4866'RKB) (RKB) to Facility Vertical Datum	4866.00ft
Horizontal Reference Pt	Slot	(4836'GL+30'KB@4866'RKB) (RKB) to Mean Sea Level	4866.00ft
Vertical Reference Pt	(4836'GL+30'KB@4866'RKB) (RKB)	(4836'GL+30'KB@4866'RKB) (RKB) to Ground Level at Slot (SLOT#05 Cecil AB35-645 (2392'FSL & 1281'FWL,SEC.35))	4866.00ft
MD Reference Pt	(4836'GL+30'KB@4866'RKB) (RKB)	Section Origin	N 0.00, E 0.00 ft
Field Vertical Reference	Mean Sea Level	Section Azimuth	89.55°



Planned Wellpath Report
Cecil AB35-645 (REV-A.0) PWP
Page 2 of 7



REFERENCE WELLPATH IDENTIFICATION			
Operator	NOBLE ENERGY, INC	Well	Cecil AB35-645
Field	WELD COUNTY (NOBLE NAD 83 GRID)	API/Legal	
Facility	SEC.35-T07N-R64W	Wellbore	Cecil AB35-645 PWB
Slot	SLOT#05 Cecil AB35-645 (2392'FSL & 1281'FWL,SEC.35)		

WELLPATH DATA (184 stations) † = interpolated, ‡ = extrapolated station										
MD [ft]	Inclination [°]	Azimuth [°]	TVD [ft]	Vert Sect [ft]	North [ft]	East [ft]	Latitude	Longitude	DLS [°/100ft]	Comments
0.00†	0.000	266.829	0.00	0.00	0.00	0.00	40.5291300	-104.5221400	0.00	
30.00	0.000	266.829	30.00	0.00	0.00	0.00	40.5291300	-104.5221400	0.00	SHL
130.00†	0.000	266.829	130.00	0.00	0.00	0.00	40.5291300	-104.5221400	0.00	
230.00†	0.000	266.829	230.00	0.00	0.00	0.00	40.5291300	-104.5221400	0.00	
330.00†	0.000	266.829	330.00	0.00	0.00	0.00	40.5291300	-104.5221400	0.00	
430.00†	0.000	266.829	430.00	0.00	0.00	0.00	40.5291300	-104.5221400	0.00	
530.00†	0.000	266.829	530.00	0.00	0.00	0.00	40.5291300	-104.5221400	0.00	
630.00†	0.000	266.829	630.00	0.00	0.00	0.00	40.5291300	-104.5221400	0.00	
730.00†	0.000	266.829	730.00	0.00	0.00	0.00	40.5291300	-104.5221400	0.00	
830.00†	0.000	266.829	830.00	0.00	0.00	0.00	40.5291300	-104.5221400	0.00	
930.00†	0.000	266.829	930.00	0.00	0.00	0.00	40.5291300	-104.5221400	0.00	
1030.00†	0.000	266.829	1030.00	0.00	0.00	0.00	40.5291300	-104.5221400	0.00	
1130.00†	0.000	266.829	1130.00	0.00	0.00	0.00	40.5291300	-104.5221400	0.00	
1230.00†	0.000	266.829	1230.00	0.00	0.00	0.00	40.5291300	-104.5221400	0.00	
1330.00†	0.000	266.829	1330.00	0.00	0.00	0.00	40.5291300	-104.5221400	0.00	
1430.00†	0.000	266.829	1430.00	0.00	0.00	0.00	40.5291300	-104.5221400	0.00	
1530.00†	0.000	266.829	1530.00	0.00	0.00	0.00	40.5291300	-104.5221400	0.00	
1630.00†	0.000	266.829	1630.00	0.00	0.00	0.00	40.5291300	-104.5221400	0.00	
1730.00†	0.000	266.829	1730.00	0.00	0.00	0.00	40.5291300	-104.5221400	0.00	
1830.00†	0.000	266.829	1830.00	0.00	0.00	0.00	40.5291300	-104.5221400	0.00	
1930.00†	0.000	266.829	1930.00	0.00	0.00	0.00	40.5291300	-104.5221400	0.00	
2000.00	0.000	266.829	2000.00	0.00	0.00	0.00	40.5291300	-104.5221400	0.00	End of Tangent
2030.00†	0.600	266.829	2030.00	-0.16	-0.01	-0.16	40.5291300	-104.5221406	2.00	
2130.00†	2.600	266.829	2129.96	-2.95	-0.16	-2.94	40.5291296	-104.5221506	2.00	
2230.00†	4.600	266.829	2229.75	-9.22	-0.51	-9.21	40.5291289	-104.5221732	2.00	
2330.00†	6.600	266.829	2329.27	-18.96	-1.05	-18.96	40.5291277	-104.5222082	2.00	
2430.00†	8.600	266.829	2428.39	-32.17	-1.78	-32.16	40.5291261	-104.5222558	2.00	
2530.00†	10.600	266.829	2526.98	-48.83	-2.70	-48.81	40.5291241	-104.5223157	2.00	
2630.00†	12.600	266.829	2624.93	-68.92	-3.82	-68.89	40.5291216	-104.5223879	2.00	
2730.00†	14.600	266.829	2722.13	-92.40	-5.12	-92.36	40.5291188	-104.5224724	2.00	
2830.00†	16.600	266.829	2818.44	-119.26	-6.60	-119.21	40.5291155	-104.5225691	2.00	
2930.00†	18.600	266.829	2913.75	-149.46	-8.28	-149.40	40.5291118	-104.5226777	2.00	
3030.00†	20.600	266.829	3007.95	-182.97	-10.13	-182.90	40.5291077	-104.5227983	2.00	
3130.00†	22.600	266.829	3100.93	-219.74	-12.17	-219.65	40.5291032	-104.5229306	2.00	
3230.00†	24.600	266.829	3192.56	-259.73	-14.38	-259.62	40.5290984	-104.5230744	2.00	
3330.00†	26.600	266.829	3282.74	-302.89	-16.77	-302.76	40.5290931	-104.5232297	2.00	
3334.26	26.685	266.829	3286.54	-304.79	-16.88	-304.67	40.5290929	-104.5232366	2.00	End of Build (XS)
3430.00†	26.685	266.829	3372.09	-347.74	-19.26	-347.60	40.5290877	-104.5233911	0.00	
3530.00†	26.685	266.829	3461.43	-392.60	-21.74	-392.44	40.5290822	-104.5235525	0.00	
3630.00†	26.685	266.829	3550.78	-437.46	-24.22	-437.28	40.5290767	-104.5237139	0.00	
3730.00†	26.685	266.829	3640.13	-482.32	-26.71	-482.12	40.5290713	-104.5238753	0.00	
3830.00†	26.685	266.829	3729.48	-527.17	-29.19	-526.96	40.5290658	-104.5240366	0.00	
3930.00†	26.685	266.829	3818.83	-572.03	-31.68	-571.80	40.5290603	-104.5241980	0.00	
4030.00†	26.685	266.829	3908.18	-616.89	-34.16	-616.64	40.5290549	-104.5243594	0.00	
4130.00†	26.685	266.829	3997.53	-661.75	-36.64	-661.48	40.5290494	-104.5245208	0.00	



Planned Wellpath Report
Cecil AB35-645 (REV-A.0) PWP
Page 3 of 7



REFERENCE WELLPATH IDENTIFICATION			
Operator	NOBLE ENERGY, INC	Well	Cecil AB35-645
Field	WELD COUNTY (NOBLE NAD 83 GRID)	API/Legal	
Facility	SEC.35-T07N-R64W	Wellbore	Cecil AB35-645 PWB
Slot	SLOT#05 Cecil AB35-645 (2392'FSL & 1281'FWL,SEC.35)		

WELLPATH DATA (184 stations) † = interpolated, ‡ = extrapolated station										
MD [ft]	Inclination [°]	Azimuth [°]	TVD [ft]	Vert Sect [ft]	North [ft]	East [ft]	Latitude	Longitude	DLS [°/100ft]	Comments
4230.00†	26.685	266.829	4086.88	-706.61	-39.13	-706.32	40.5290440	-104.5246822	0.00	
4330.00†	26.685	266.829	4176.22	-751.46	-41.61	-751.16	40.5290385	-104.5248436	0.00	
4430.00†	26.685	266.829	4265.57	-796.32	-44.10	-796.00	40.5290330	-104.5250050	0.00	
4530.00†	26.685	266.829	4354.92	-841.18	-46.58	-840.84	40.5290276	-104.5251664	0.00	
4630.00†	26.685	266.829	4444.27	-886.04	-49.06	-885.68	40.5290221	-104.5253278	0.00	
4730.00†	26.685	266.829	4533.62	-930.90	-51.55	-930.52	40.5290166	-104.5254892	0.00	
4830.00†	26.685	266.829	4622.97	-975.76	-54.03	-975.36	40.5290112	-104.5256505	0.00	
4930.00†	26.685	266.829	4712.32	-1020.61	-56.52	-1020.20	40.5290057	-104.5258119	0.00	
5030.00†	26.685	266.829	4801.67	-1065.47	-59.00	-1065.04	40.5290002	-104.5259733	0.00	
5130.00†	26.685	266.829	4891.02	-1110.33	-61.48	-1109.88	40.5289948	-104.5261347	0.00	
5230.00†	26.685	266.829	4980.36	-1155.19	-63.97	-1154.72	40.5289893	-104.5262961	0.00	
5330.00†	26.685	266.829	5069.71	-1200.05	-66.45	-1199.56	40.5289838	-104.5264575	0.00	
5430.00†	26.685	266.829	5159.06	-1244.91	-68.94	-1244.40	40.5289784	-104.5266189	0.00	
5530.00†	26.685	266.829	5248.41	-1289.76	-71.42	-1289.24	40.5289729	-104.5267803	0.00	
5630.00†	26.685	266.829	5337.76	-1334.62	-73.90	-1334.08	40.5289674	-104.5269417	0.00	
5730.00†	26.685	266.829	5427.11	-1379.48	-76.39	-1378.92	40.5289620	-104.5271030	0.00	
5830.00†	26.685	266.829	5516.46	-1424.34	-78.87	-1423.76	40.5289565	-104.5272644	0.00	
5930.00†	26.685	266.829	5605.81	-1469.20	-81.36	-1468.60	40.5289510	-104.5274258	0.00	
6030.00†	26.685	266.829	5695.15	-1514.05	-83.84	-1513.44	40.5289456	-104.5275872	0.00	
6130.00†	26.685	266.829	5784.50	-1558.91	-86.32	-1558.28	40.5289401	-104.5277486	0.00	
6230.00†	26.685	266.829	5873.85	-1603.77	-88.81	-1603.12	40.5289346	-104.5279100	0.00	
6329.62	26.685	266.829	5962.87	-1648.46	-91.28	-1647.79	40.5289292	-104.5280708	0.00	KOP
6330.00†	26.651	266.826	5963.20	-1648.63	-91.29	-1647.96	40.5289292	-104.5280714	9.00	
6430.00†	17.664	265.555	6055.72	-1686.24	-93.71	-1685.55	40.5289236	-104.5282067	9.00	
6530.00†	8.700	261.783	6152.99	-1708.92	-95.98	-1708.21	40.5289181	-104.5282883	9.00	
6630.00†	1.166	160.534	6252.61	-1716.10	-98.02	-1715.37	40.5289127	-104.5283141	9.00	
6730.00†	9.434	95.702	6352.13	-1707.60	-99.80	-1706.86	40.5289076	-104.5282836	9.00	
6830.00†	18.402	92.357	6449.09	-1683.64	-101.26	-1682.89	40.5289028	-104.5281974	9.00	
6930.00†	27.391	91.166	6541.12	-1644.80	-102.38	-1644.04	40.5288986	-104.5280577	9.00	
7030.00†	36.384	90.532	6625.94	-1592.04	-103.13	-1591.27	40.5288950	-104.5278679	9.00	
7130.00†	45.380	90.122	6701.47	-1526.66	-103.48	-1525.89	40.5288920	-104.5276328	9.00	
7230.00†	54.378	89.823	6765.84	-1450.27	-103.43	-1449.50	40.5288899	-104.5273580	9.00	
7330.00†	63.375	89.585	6817.48	-1364.76	-102.98	-1363.98	40.5288885	-104.5270504	9.00	
7430.00†	72.373	89.382	6855.10	-1272.22	-102.14	-1271.45	40.5288881	-104.5267175	9.00	
7530.00†	81.372	89.198	6877.79	-1174.93	-100.93	-1174.17	40.5288884	-104.5263675	9.00	
7625.89	90.000	89.030	6885.00†	-1079.41	-99.45	-1078.65	40.5288896	-104.5260239	9.00	TPZ
7630.00†	90.000	89.030	6885.00	-1075.30	-99.38	-1074.54	40.5288897	-104.5260091	0.00	
7730.00†	90.000	89.030	6885.00	-975.30	-97.69	-974.56	40.5288913	-104.5256494	0.00	
7830.00†	90.000	89.030	6885.00	-875.30	-96.00	-874.57	40.5288929	-104.5252897	0.00	
7930.00†	90.000	89.030	6885.00	-775.31	-94.31	-774.58	40.5288946	-104.5249299	0.00	
8030.00†	90.000	89.030	6885.00	-675.31	-92.61	-674.60	40.5288962	-104.5245702	0.00	
8130.00†	90.000	89.030	6885.00	-575.32	-90.92	-574.61	40.5288978	-104.5242105	0.00	
8230.00†	90.000	89.030	6885.00	-475.32	-89.23	-474.63	40.5288994	-104.5238508	0.00	
8330.00†	90.000	89.030	6885.00	-375.32	-87.54	-374.64	40.5289011	-104.5234911	0.00	
8430.00†	90.000	89.030	6885.00	-275.33	-85.85	-274.66	40.5289027	-104.5231313	0.00	



Planned Wellpath Report
Cecil AB35-645 (REV-A.0) PWP
Page 4 of 7



REFERENCE WELLPATH IDENTIFICATION			
Operator	NOBLE ENERGY, INC	Well	Cecil AB35-645
Field	WELD COUNTY (NOBLE NAD 83 GRID)	API/Legal	
Facility	SEC.35-T07N-R64W	Wellbore	Cecil AB35-645 PWB
Slot	SLOT#05 Cecil AB35-645 (2392'FSL & 1281'FWL,SEC.35)		

WELLPATH DATA (184 stations) † = interpolated, ‡ = extrapolated station										
MD [ft]	Inclination [°]	Azimuth [°]	TVD [ft]	Vert Sect [ft]	North [ft]	East [ft]	Latitude	Longitude	DLS [°/100ft]	Comments
8530.00†	90.000	89.030	6885.00	-175.33	-84.15	-174.67	40.5289043	-104.5227716	0.00	
8630.00†	90.000	89.030	6885.00	-75.34	-82.46	-74.68	40.5289059	-104.5224119	0.00	
8730.00†	90.000	89.030	6885.00	24.66	-80.77	25.30	40.5289075	-104.5220522	0.00	
8830.00†	90.000	89.030	6885.00	124.66	-79.08	125.29	40.5289092	-104.5216925	0.00	
8930.00†	90.000	89.030	6885.00	224.65	-77.38	225.27	40.5289108	-104.5213328	0.00	
9030.00†	90.000	89.030	6885.00	324.65	-75.69	325.26	40.5289124	-104.5209730	0.00	
9130.00†	90.000	89.030	6885.00	424.64	-74.00	425.24	40.5289140	-104.5206133	0.00	
9230.00†	90.000	89.030	6885.00	524.64	-72.31	525.23	40.5289156	-104.5202536	0.00	
9330.00†	90.000	89.030	6885.00	624.64	-70.62	625.22	40.5289172	-104.5198939	0.00	
9430.00†	90.000	89.030	6885.00	724.63	-68.92	725.20	40.5289188	-104.5195342	0.00	
9530.00†	90.000	89.030	6885.00	824.63	-67.23	825.19	40.5289205	-104.5191744	0.00	
9630.00†	90.000	89.030	6885.00	924.62	-65.54	925.17	40.5289221	-104.5188147	0.00	
9730.00†	90.000	89.030	6885.00	1024.62	-63.85	1025.16	40.5289237	-104.5184550	0.00	
9830.00†	90.000	89.030	6885.00	1124.62	-62.15	1125.14	40.5289253	-104.5180953	0.00	
9930.00†	90.000	89.030	6885.00	1224.61	-60.46	1225.13	40.5289269	-104.5177356	0.00	
10030.00†	90.000	89.030	6885.00	1324.61	-58.77	1325.12	40.5289285	-104.5173758	0.00	
10130.00†	90.000	89.030	6885.00	1424.60	-57.08	1425.10	40.5289301	-104.5170161	0.00	
10230.00†	90.000	89.030	6885.00	1524.60	-55.39	1525.09	40.5289317	-104.5166564	0.00	
10330.00†	90.000	89.030	6885.00	1624.60	-53.69	1625.07	40.5289333	-104.5162967	0.00	
10430.00†	90.000	89.030	6885.00	1724.59	-52.00	1725.06	40.5289349	-104.5159370	0.00	
10530.00†	90.000	89.030	6885.00	1824.59	-50.31	1825.04	40.5289365	-104.5155773	0.00	
10630.00†	90.000	89.030	6885.00	1924.58	-48.62	1925.03	40.5289381	-104.5152175	0.00	
10730.00†	90.000	89.030	6885.00	2024.58	-46.92	2025.02	40.5289397	-104.5148578	0.00	
10830.00†	90.000	89.030	6885.00	2124.58	-45.23	2125.00	40.5289413	-104.5144981	0.00	
10930.00†	90.000	89.030	6885.00	2224.57	-43.54	2224.99	40.5289429	-104.5141384	0.00	
11030.00†	90.000	89.030	6885.00	2324.57	-41.85	2324.97	40.5289445	-104.5137787	0.00	
11130.00†	90.000	89.030	6885.00	2424.56	-40.16	2424.96	40.5289461	-104.5134189	0.00	
11230.00†	90.000	89.030	6885.00	2524.56	-38.46	2524.94	40.5289477	-104.5130592	0.00	
11330.00†	90.000	89.030	6885.00	2624.55	-36.77	2624.93	40.5289492	-104.5126995	0.00	
11430.00†	90.000	89.030	6885.00	2724.55	-35.08	2724.91	40.5289508	-104.5123398	0.00	
11530.00†	90.000	89.030	6885.00	2824.55	-33.39	2824.90	40.5289524	-104.5119801	0.00	
11630.00†	90.000	89.030	6885.00	2924.54	-31.69	2924.89	40.5289540	-104.5116203	0.00	
11730.00†	90.000	89.030	6885.00	3024.54	-30.00	3024.87	40.5289556	-104.5112606	0.00	
11830.00†	90.000	89.030	6885.00	3124.53	-28.31	3124.86	40.5289572	-104.5109009	0.00	
11930.00†	90.000	89.030	6885.00	3224.53	-26.62	3224.84	40.5289588	-104.5105412	0.00	
12030.00†	90.000	89.030	6885.00	3324.53	-24.93	3324.83	40.5289603	-104.5101815	0.00	
12130.00†	90.000	89.030	6885.00	3424.52	-23.23	3424.81	40.5289619	-104.5098217	0.00	
12230.00†	90.000	89.030	6885.00	3524.52	-21.54	3524.80	40.5289635	-104.5094620	0.00	
12330.00†	90.000	89.030	6885.00	3624.51	-19.85	3624.79	40.5289651	-104.5091023	0.00	
12430.00†	90.000	89.030	6885.00	3724.51	-18.16	3724.77	40.5289667	-104.5087426	0.00	
12530.00†	90.000	89.030	6885.00	3824.51	-16.46	3824.76	40.5289682	-104.5083829	0.00	
12630.00†	90.000	89.030	6885.00	3924.50	-14.77	3924.74	40.5289698	-104.5080231	0.00	
12730.00†	90.000	89.030	6885.00	4024.50	-13.08	4024.73	40.5289714	-104.5076634	0.00	
12830.00†	90.000	89.030	6885.00	4124.49	-11.39	4124.71	40.5289730	-104.5073037	0.00	
12930.00†	90.000	89.030	6885.00	4224.49	-9.70	4224.70	40.5289745	-104.5069440	0.00	



Planned Wellpath Report
Cecil AB35-645 (REV-A.0) PWP
Page 5 of 7



REFERENCE WELLPATH IDENTIFICATION			
Operator	NOBLE ENERGY, INC	Well	Cecil AB35-645
Field	WELD COUNTY (NOBLE NAD 83 GRID)	API/Legal	
Facility	SEC.35-T07N-R64W	Wellbore	Cecil AB35-645 PWB
Slot	SLOT#05 Cecil AB35-645 (2392'FSL & 1281'FWL,SEC.35)		

WELLPATH DATA (184 stations) † = interpolated, ‡ = extrapolated station										
MD [ft]	Inclination [°]	Azimuth [°]	TVD [ft]	Vert Sect [ft]	North [ft]	East [ft]	Latitude	Longitude	DLS [°/100ft]	Comments
13030.00†	90.000	89.030	6885.00	4324.49	-8.00	4324.69	40.5289761	-104.5065843	0.00	
13130.00†	90.000	89.030	6885.00	4424.48	-6.31	4424.67	40.5289777	-104.5062245	0.00	
13230.00†	90.000	89.030	6885.00	4524.48	-4.62	4524.66	40.5289792	-104.5058648	0.00	
13330.00†	90.000	89.030	6885.00	4624.47	-2.93	4624.64	40.5289808	-104.5055051	0.00	
13430.00†	90.000	89.030	6885.00	4724.47	-1.23	4724.63	40.5289824	-104.5051454	0.00	
13530.00†	90.000	89.030	6885.00	4824.47	0.46	4824.61	40.5289839	-104.5047857	0.00	
13630.00†	90.000	89.030	6885.00	4924.46	2.15	4924.60	40.5289855	-104.5044259	0.00	
13730.00†	90.000	89.030	6885.00	5024.46	3.84	5024.59	40.5289871	-104.5040662	0.00	
13830.00†	90.000	89.030	6885.00	5124.45	5.54	5124.57	40.5289886	-104.5037065	0.00	
13930.00†	90.000	89.030	6885.00	5224.45	7.23	5224.56	40.5289902	-104.5033468	0.00	
14030.00†	90.000	89.030	6885.00	5324.45	8.92	5324.54	40.5289917	-104.5029871	0.00	
14130.00†	90.000	89.030	6885.00	5424.44	10.61	5424.53	40.5289933	-104.5026273	0.00	
14230.00†	90.000	89.030	6885.00	5524.44	12.30	5524.51	40.5289949	-104.5022676	0.00	
14330.00†	90.000	89.030	6885.00	5624.43	14.00	5624.50	40.5289964	-104.5019079	0.00	
14430.00†	90.000	89.030	6885.00	5724.43	15.69	5724.49	40.5289980	-104.5015482	0.00	
14530.00†	90.000	89.030	6885.00	5824.43	17.38	5824.47	40.5289995	-104.5011885	0.00	
14630.00†	90.000	89.030	6885.00	5924.42	19.07	5924.46	40.5290011	-104.5008288	0.00	
14730.00†	90.000	89.030	6885.00	6024.42	20.77	6024.44	40.5290026	-104.5004690	0.00	
14830.00†	90.000	89.030	6885.00	6124.41	22.46	6124.43	40.5290042	-104.5001093	0.00	
14930.00†	90.000	89.030	6885.00	6224.41	24.15	6224.41	40.5290057	-104.4997496	0.00	
15030.00†	90.000	89.030	6885.00	6324.41	25.84	6324.40	40.5290073	-104.4993899	0.00	
15130.00†	90.000	89.030	6885.00	6424.40	27.53	6424.39	40.5290088	-104.4990302	0.00	
15230.00†	90.000	89.030	6885.00	6524.40	29.23	6524.37	40.5290104	-104.4986704	0.00	
15330.00†	90.000	89.030	6885.00	6624.39	30.92	6624.36	40.5290119	-104.4983107	0.00	
15430.00†	90.000	89.030	6885.00	6724.39	32.61	6724.34	40.5290135	-104.4979510	0.00	
15530.00†	90.000	89.030	6885.00	6824.39	34.30	6824.33	40.5290150	-104.4975913	0.00	
15630.00†	90.000	89.030	6885.00	6924.38	36.00	6924.31	40.5290165	-104.4972316	0.00	
15730.00†	90.000	89.030	6885.00	7024.38	37.69	7024.30	40.5290181	-104.4968718	0.00	
15830.00†	90.000	89.030	6885.00	7124.37	39.38	7124.28	40.5290196	-104.4965121	0.00	
15930.00†	90.000	89.030	6885.00	7224.37	41.07	7224.27	40.5290212	-104.4961524	0.00	
16030.00†	90.000	89.030	6885.00	7324.36	42.76	7324.26	40.5290227	-104.4957927	0.00	
16130.00†	90.000	89.030	6885.00	7424.36	44.46	7424.24	40.5290242	-104.4954330	0.00	
16230.00†	90.000	89.030	6885.00	7524.36	46.15	7524.23	40.5290258	-104.4950732	0.00	
16330.00†	90.000	89.030	6885.00	7624.35	47.84	7624.21	40.5290273	-104.4947135	0.00	
16430.00†	90.000	89.030	6885.00	7724.35	49.53	7724.20	40.5290288	-104.4943538	0.00	
16530.00†	90.000	89.030	6885.00	7824.34	51.23	7824.18	40.5290304	-104.4939941	0.00	
16630.00†	90.000	89.030	6885.00	7924.34	52.92	7924.17	40.5290319	-104.4936344	0.00	
16730.00†	90.000	89.030	6885.00	8024.34	54.61	8024.16	40.5290334	-104.4932746	0.00	
16830.00†	90.000	89.030	6885.00	8124.33	56.30	8124.14	40.5290350	-104.4929149	0.00	
16930.00†	90.000	89.030	6885.00	8224.33	57.99	8224.13	40.5290365	-104.4925552	0.00	
17030.00†	90.000	89.030	6885.00	8324.32	59.69	8324.11	40.5290380	-104.4921955	0.00	
17130.00†	90.000	89.030	6885.00	8424.32	61.38	8424.10	40.5290395	-104.4918357	0.00	
17230.00†	90.000	89.030	6885.00	8524.32	63.07	8524.08	40.5290411	-104.4914760	0.00	
17330.00†	90.000	89.030	6885.00	8624.31	64.76	8624.07	40.5290426	-104.4911163	0.00	
17430.00†	90.000	89.030	6885.00	8724.31	66.46	8724.06	40.5290441	-104.4907566	0.00	



Planned Wellpath Report

Cecil AB35-645 (REV-A.0) PWP

Page 6 of 7



REFERENCE WELLPATH IDENTIFICATION			
Operator	NOBLE ENERGY, INC	Well	Cecil AB35-645
Field	WELD COUNTY (NOBLE NAD 83 GRID)	API/Legal	
Facility	SEC.35-T07N-R64W	Wellbore	Cecil AB35-645 PWB
Slot	SLOT#05 Cecil AB35-645 (2392'FSL & 1281'FWL,SEC.35)		

WELLPATH DATA (184 stations) † = interpolated, ‡ = extrapolated station										
MD [ft]	Inclination [°]	Azimuth [°]	TVD [ft]	Vert Sect [ft]	North [ft]	East [ft]	Latitude	Longitude	DLS [°/100ft]	Comments
17530.00†	90.000	89.030	6885.00	8824.30	68.15	8824.04	40.5290456	-104.4903969	0.00	
17630.00†	90.000	89.030	6885.00	8924.30	69.84	8924.03	40.5290471	-104.4900371	0.00	
17730.00†	90.000	89.030	6885.00	9024.30	71.53	9024.01	40.5290487	-104.4896774	0.00	
17738.63	90.000	89.030	6885.00‡	9032.92	71.68	9032.64	40.5290488	-104.4896464	0.00	BHL

HOLE & CASING SECTIONS - Ref Wellbore: Cecil AB35-645 PWB Ref Wellpath: Cecil AB35-645 (REV-A.0) PWP									
String/Diameter	Start MD [ft]	End MD [ft]	Interval [ft]	Start TVD [ft]	End TVD [ft]	Start N/S [ft]	Start E/W [ft]	End N/S [ft]	End E/W [ft]
9.625in Casing Surface	30.00	1950.00	1920.00	30.00	1950.00	0.00	0.00	0.00	0.00

TARGETS									
Name	MD [ft]	TVD [ft]	North [ft]	East [ft]	Grid East [US ft]	Grid North [US ft]	Latitude	Longitude	Shape
SEC.35-T07N-R64W OGD 3	N/A	0.00	-1.62	-147.33	3271672.55	1437099.89	40.5291300	-104.5226700	polygon
	2D Polygon: dimensions not calculated								
SEC.36- T07N-R64W OGD 3	N/A	0.00	-1.62	-147.33	3271672.55	1437099.89	40.5291300	-104.5226700	polygon
	2D Polygon: dimensions not calculated								
2) Cecil AB35-645 BHL Rev-1 (2314'FSL & 200'FEL,SEC.36)	17738.63	6885.00	71.68	9032.64	3280852.21	1437173.19	40.5290488	-104.4896464	point
1) Cecil AB35-645 LP Rev-1 (2311'FSL & 200'FWL,SEC.35)	7625.89	6885.00	-99.45	-1078.65	3270741.25	1437002.06	40.5288896	-104.5260239	point

SURVEY PROGRAM - Ref Wellbore: Cecil AB35-645 PWB Ref Wellpath: Cecil AB35-645 (REV-A.0) PWP				
Start MD [ft]	End MD [ft]	Positional Uncertainty Model	Log Name/Comment	Wellbore
30.00	17738.63	OWSG MWD rev2 (MS+IFR1)		Cecil AB35-645 PWB



Planned Wellpath Report
Cecil AB35-645 (REV-A.0) PWP
Page 7 of 7



REFERENCE WELLPATH IDENTIFICATION			
Operator	NOBLE ENERGY, INC	Well	Cecil AB35-645
Field	WELD COUNTY (NOBLE NAD 83 GRID)	API/Legal	
Facility	SEC.35-T07N-R64W	Wellbore	Cecil AB35-645 PWB
Slot	SLOT#05 Cecil AB35-645 (2392'FSL & 1281'FWL,SEC.35)		

DESIGN COMMENTS				
MD [ft]	Inclination [°]	Azimuth [°]	TVD [ft]	Comment
30.00	0.000	266.829	30.00	SHL
2000.00	0.000	266.829	2000.00	End of Tangent
3334.26	26.685	266.829	3286.54	End of Build (XS)
6329.62	26.685	266.829	5962.87	KOP
7625.89	90.000	89.030	6885.00	TPZ
17738.63	90.000	89.030	6885.00	BHL