

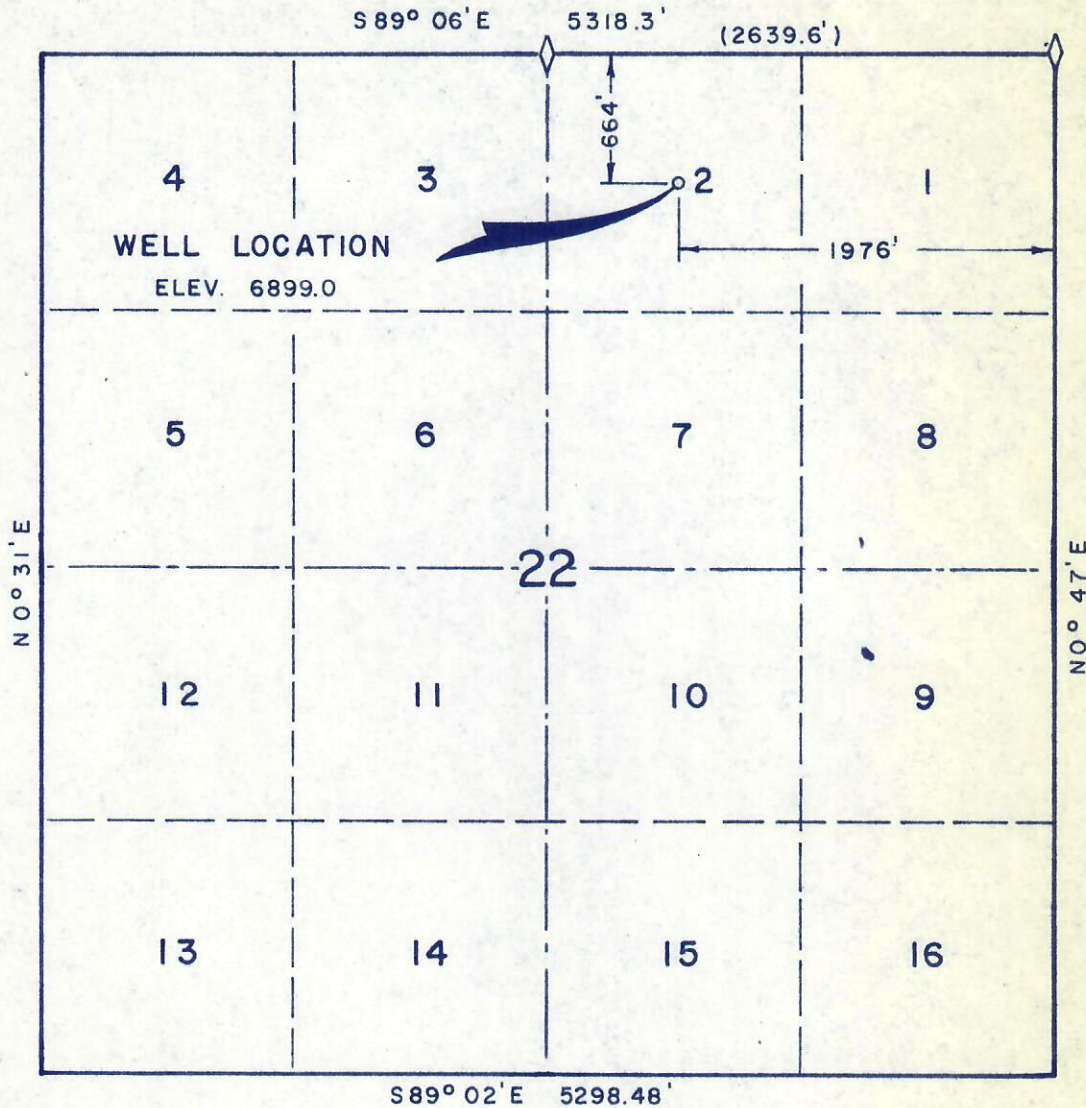
RECEIVED

SEP 30 1974

WELL LOCATION
1976.0 FT. W.E.L. - 664.0 FT. S.N.L.
SECTION 22, T6N R9W 6TH.PM. COLO. OIL & GAS CONS. COMM.



00213165



Scale 1" = 1000'

R.P. 150.0 ft. North & 150.0 ft. West.

74 805

I, David L. Bear do hereby certify that this plat was plotted from notes of a field survey made under my direct responsibility, supervision and checking on Sept. 23, 1974.

David L. Bear
Registered Land Surveyor

WESTERN ENGINEERS, INC.
WELL LOCATION

ATLANTIC RICHFIELD CO.

NOLAND No 1

MOFFAT COUNTY, COLORADO

SURVEYED D.L.B. DRAWN G.L.A.

GRAND JUNCTION, COLO. 9/27/74