

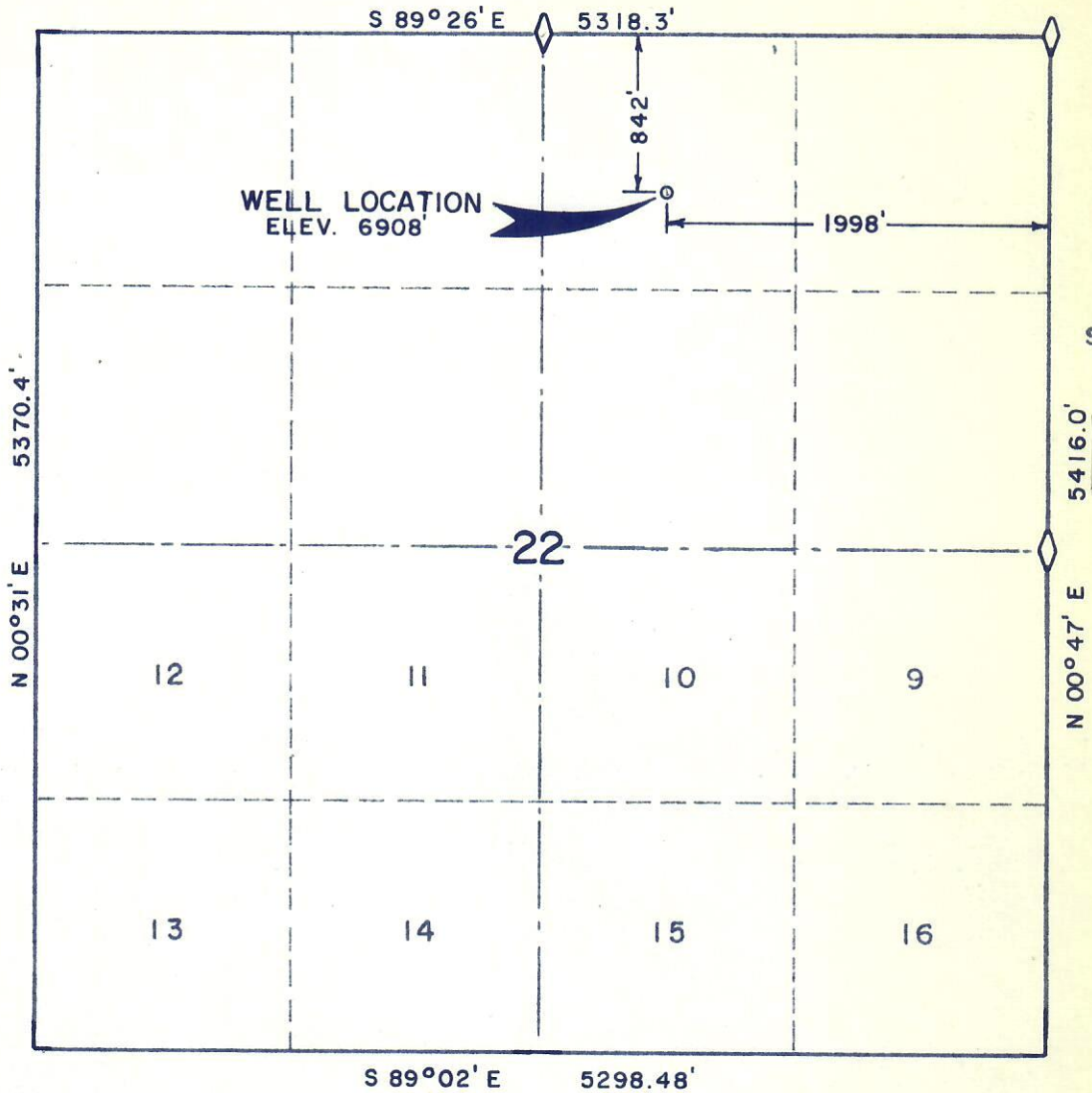
RECEIVED

NOV 6 1974

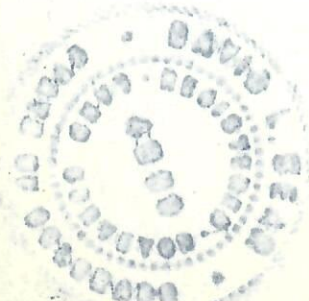
WELL LOCATION  
1998.0FT. W.E.L. - 842.0FT. S.N.L.  
SECTION 22, T6N R90W 6TH.P.M. COLO. OIL & GAS CONS. COMM.



13842



Scale 1" = 1000'



I, David L. Bear do hereby certify that this plat was plotted from notes of a field survey made under my direct responsibility, supervision and checking on October 30, 1974.

*David L. Bear*  
Registered Land Surveyor

*file*

WESTERN ENGINEERS, INC.  
WELL LOCATION  
ATLANTIC RICHFIELD CO.  
NOLAN ALT. # 1  
MOFFAT COUNTY, COLORADO

SURVEYED D.L.B. DRAWN R.O.  
GRAND JUNCTION, COLO. 10/31/74