



Compensated Neutron
Gamma Ray
Casing Collar Log

Company	Caerus Piceance LLC.	Country	USA
Well	BJU B26 FED 11A-26-496		
Field	Grand Valley		
County	Garfield		
State	Colorado		
Company	Caerus Piceance LLC.	Country	USA
Well	BJU B26 FED 11A-26-496		
Field	Grand Valley		
County	Garfield		
State	Colorado		
Location:	API # : 05-045-24437	Other Services	RCBL
SEC 26 TWP 4S RGE 96W			
Permanent Datum	Ground Level	Elevation	8211'
Log Measured From	Kelly Bushing		
Drilling Measured From	Kelly Bushing		
Elevation			
K.B. 8241'			
D.F. 8240'			
G.L. 8211'			
Date	11-AUG-2022		
Run Number	One		
Depth Driller	12098 FT		
Depth Logger	11984 FT		
Bottom Logged Interval	11971 FT		
Top Log Interval	7500 FT		
Open Hole Size	8.750"		
Type Fluid	Fresh Water		
Density / Viscosity	8.34 lb/gal		
Max. Recorded Temp.	---		
Estimated Cement Top	---		
Time Well Ready	ROA		
Time Logger on Bottom	10:50		
Equipment Number	8093		
Location	Grand Junction, Co.		
Recorded By	P. Edwards		
Witnessed By	R. Tompkins		
Borehole Record			
Run Number	Bit	From	To
	8.75"	Surface	12098'
Tubing Record			
	Size	Weight	From
			To
Casing Record	Size	Wgt/Ft	Top
Surface String	9.625"	36	Surface
Prot. String	4.5"	11.6	Surface
Production String			Bottom
Liner			

<<<< Fold Here >>>>

All interpretations are opinions based on inferences from electrical or other measurements and we cannot and do not guarantee the accuracy or correctness of any interpretation, and we shall not, except in the case of gross or willful negligence on our part, be liable or responsible for any loss, costs, damages, or expenses incurred or sustained by anyone resulting from any interpretation made by any of our officers, agents or employees. These interpretations are also subject to our general terms and conditions set out in our current Price Schedule.

Comments

Log ran as per customer request.
Depth referenced to Kelly Bushing @ 30FT
Marker Joint from 8011 FT - 8021 FT
Log ran from 11984 FT to 7500 FT
Log ran with 0 PSI surface induced pressure.

Thank you for choosing The Wireline Group!!!

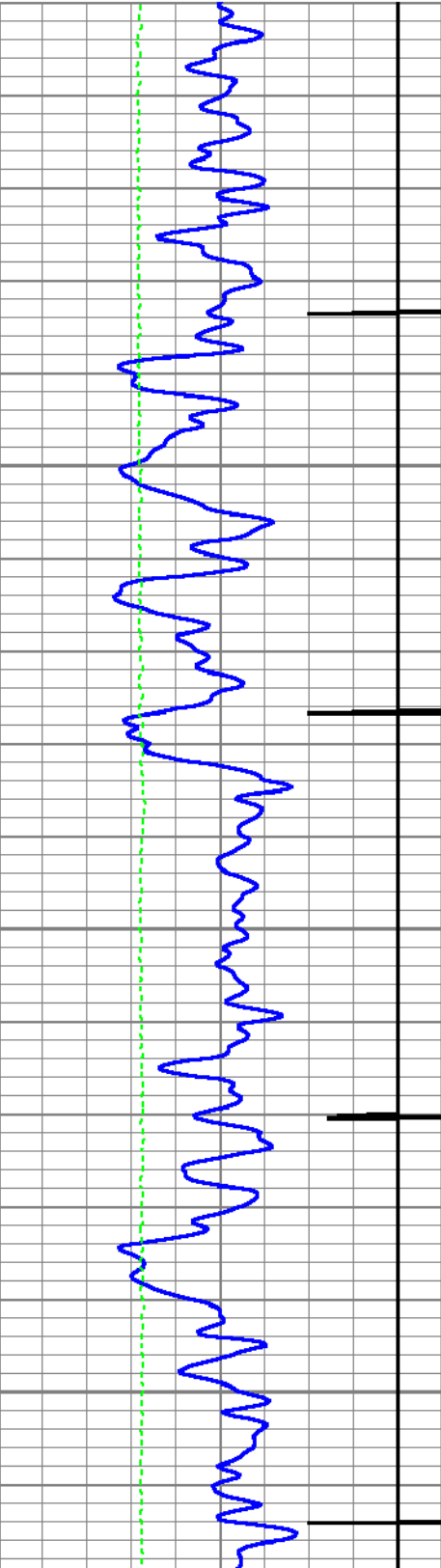


Main Pass 5" = 100'

Database File caerus_bju b26 fed 11a-26-496_rcbl_cnl_8-11-2022.db
Dataset Pathname main
Presentation Format twg_cnl
Dataset Creation Thu Aug 11 10:50:55 2022
Charted by Depth in Feet scaled 1:240

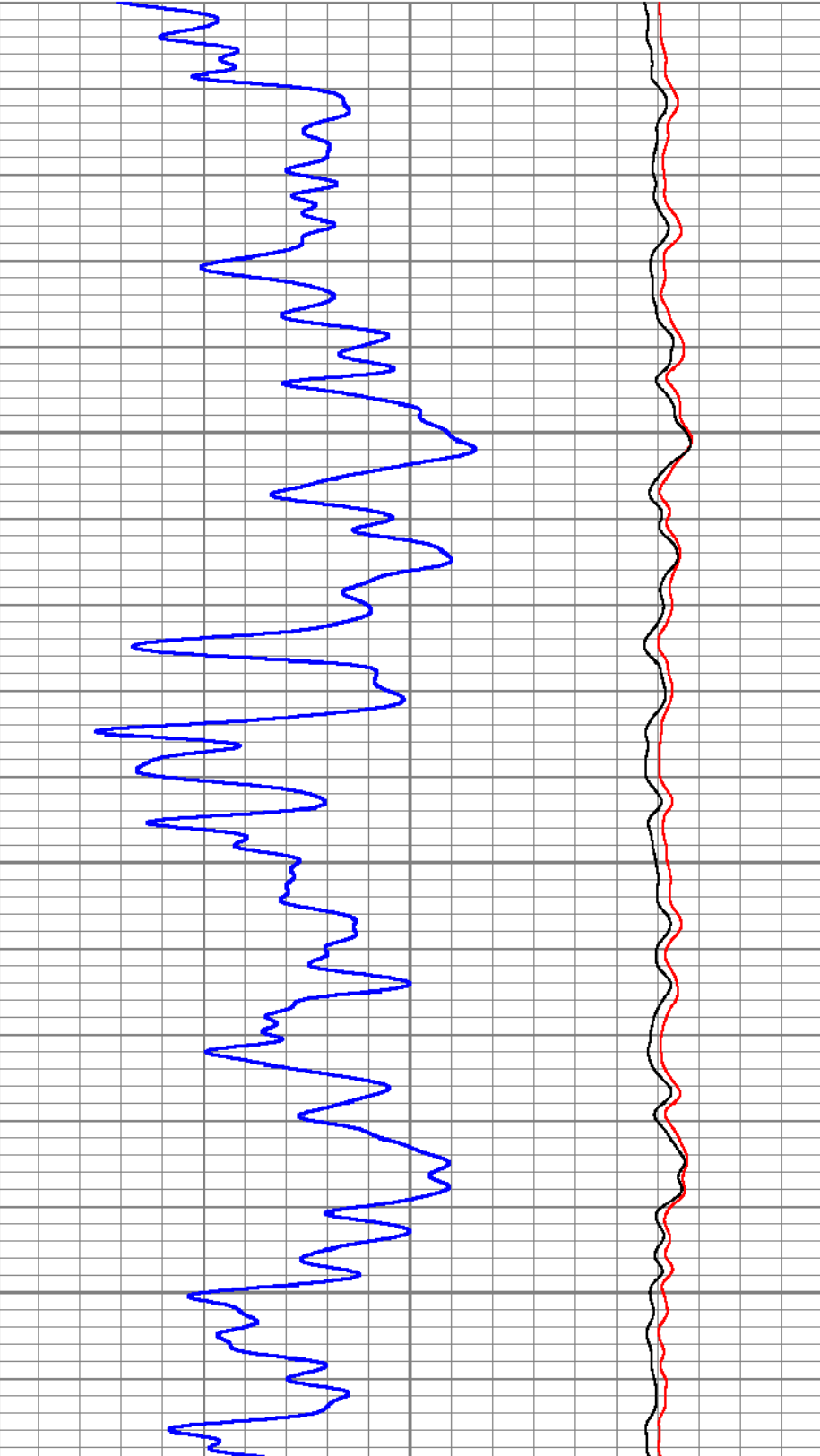
0	GR (GAPI)	200
9	CCL	-1
0	Line Tension (lb)	4000

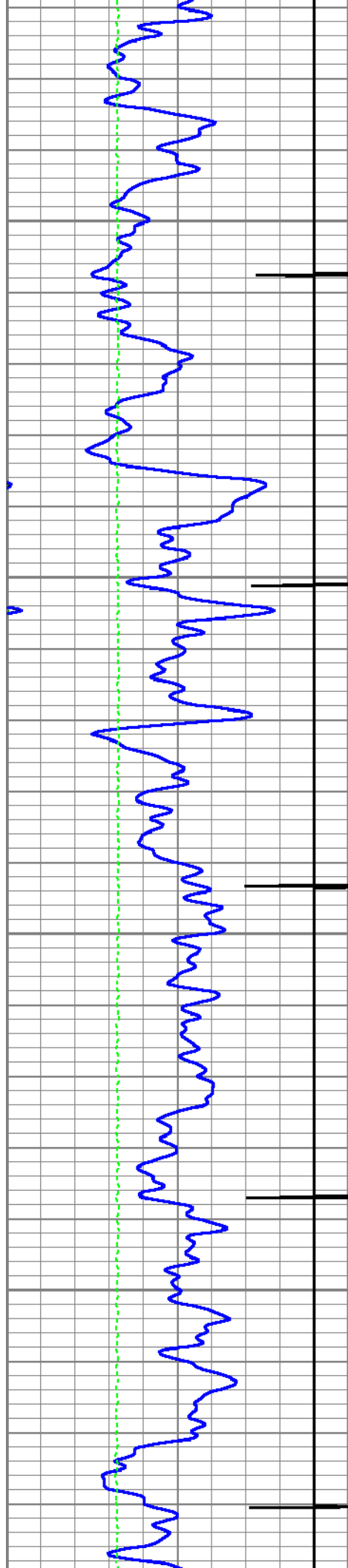
0.3	CNPOR (pu)	-0.1
	CNLSC	0 (cps) 1500
	CNSSC	0 (cps) 7000



7500

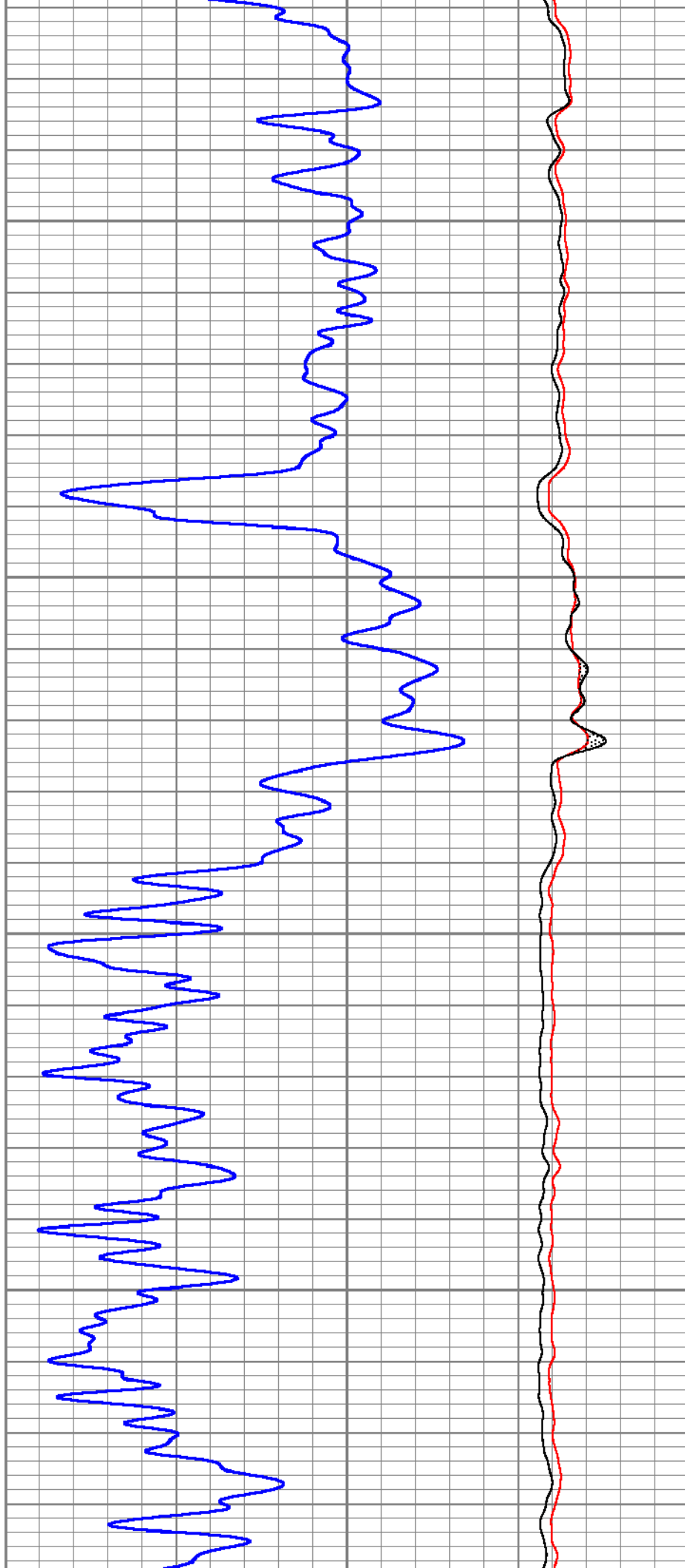
7600

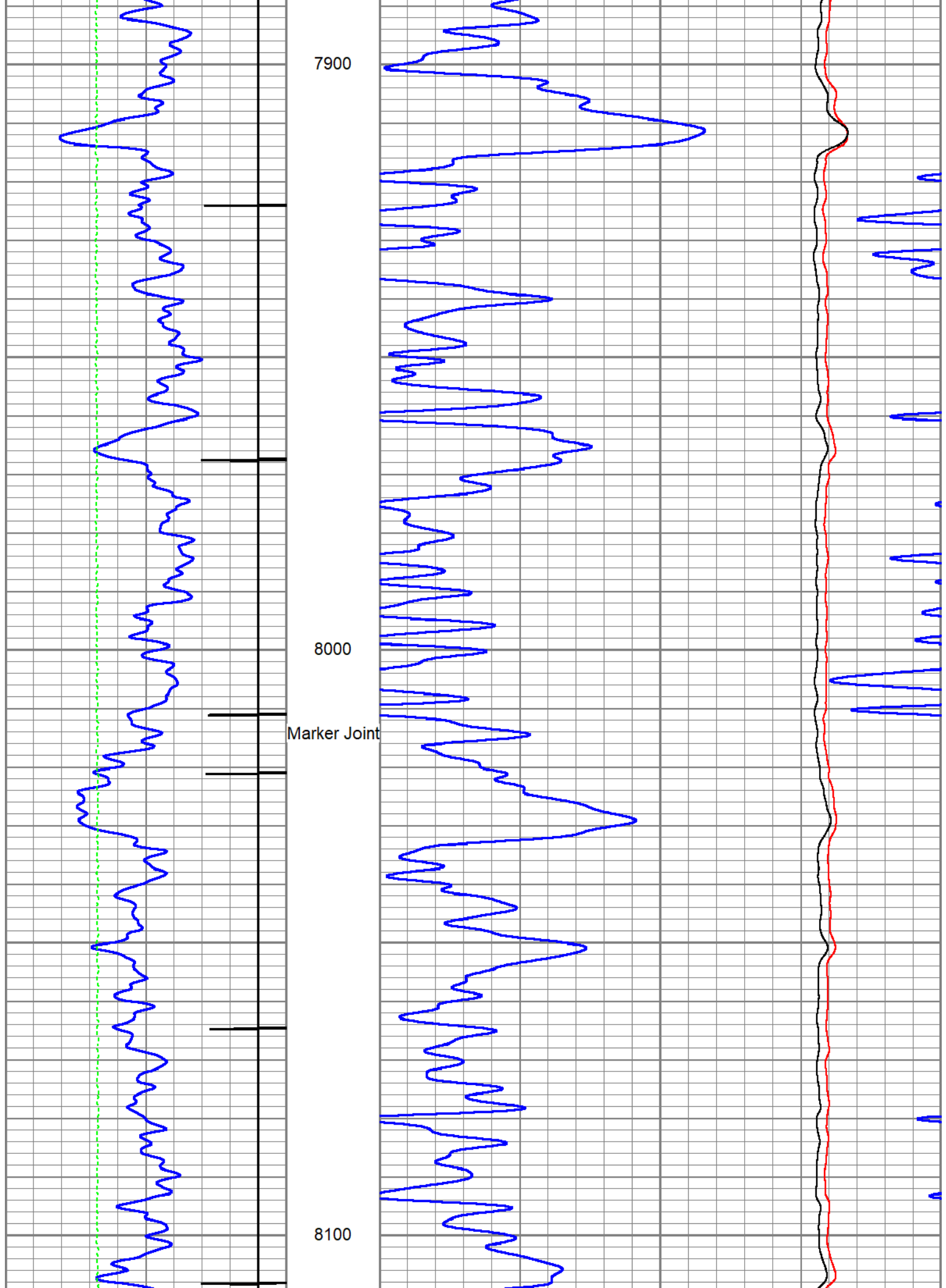


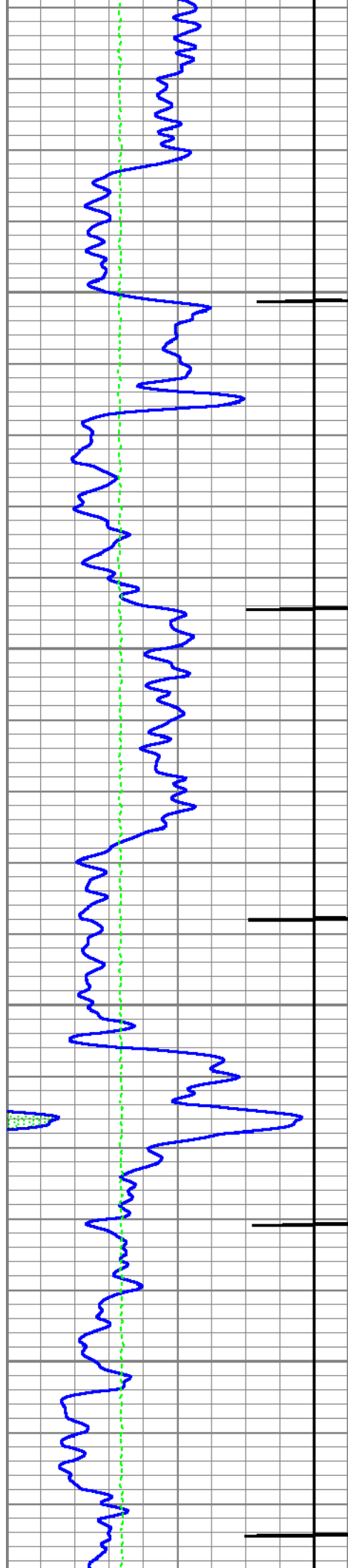


7700

7800

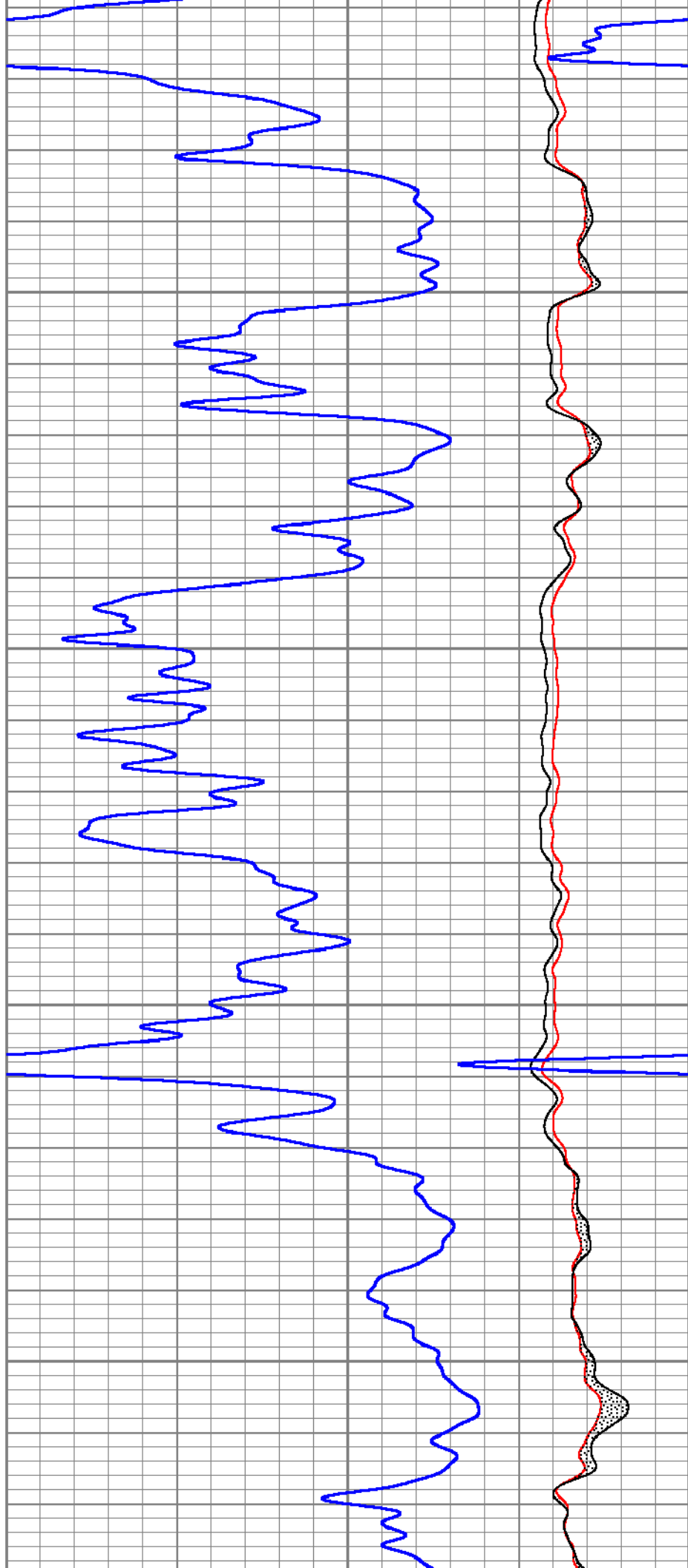


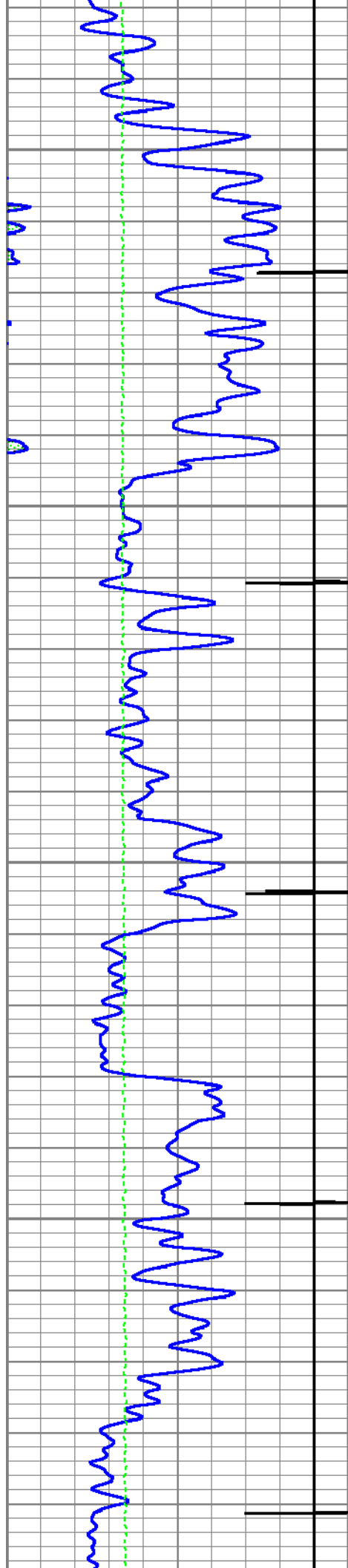




8200

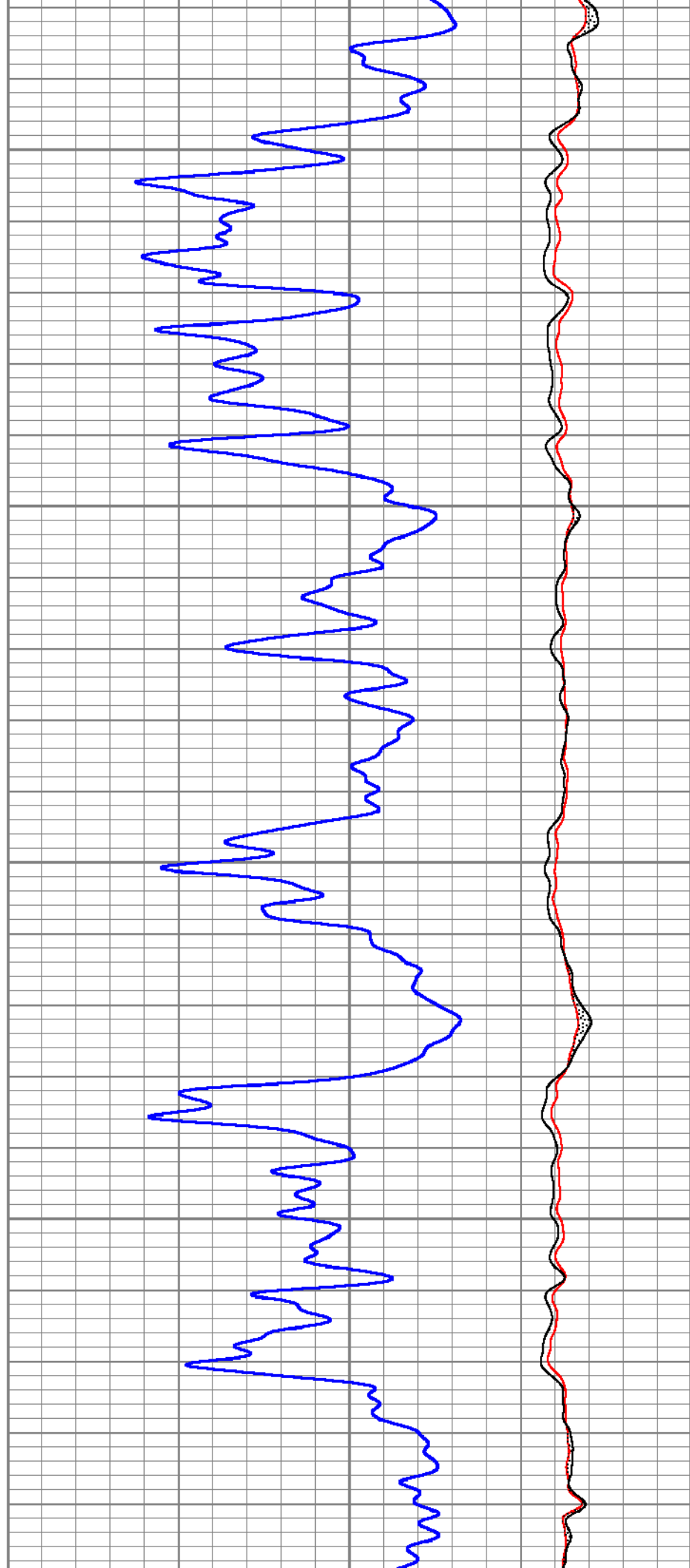
8300

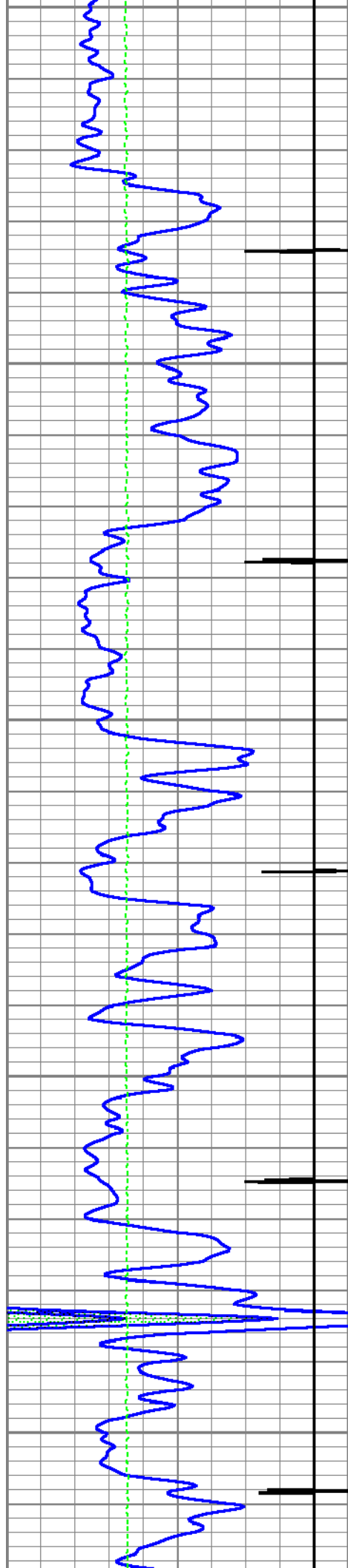




8400

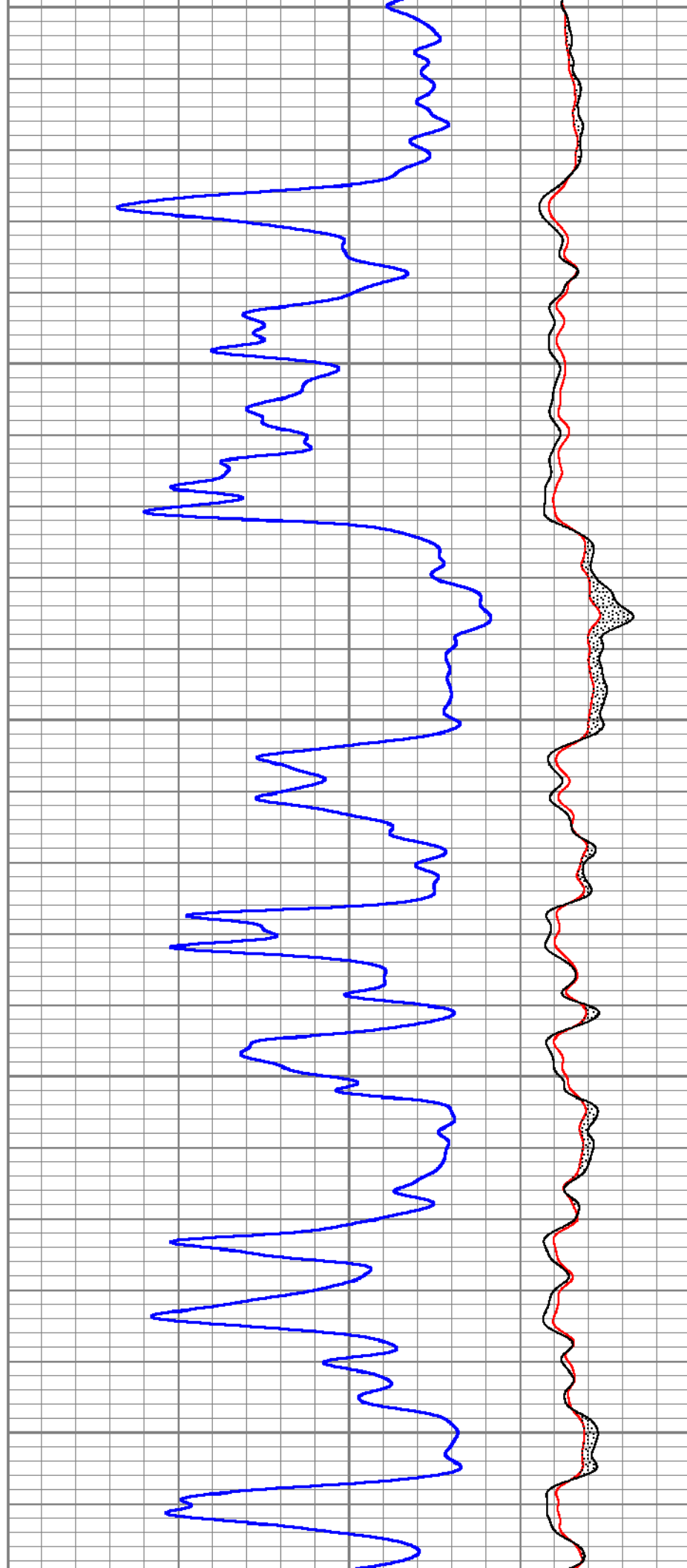
8500

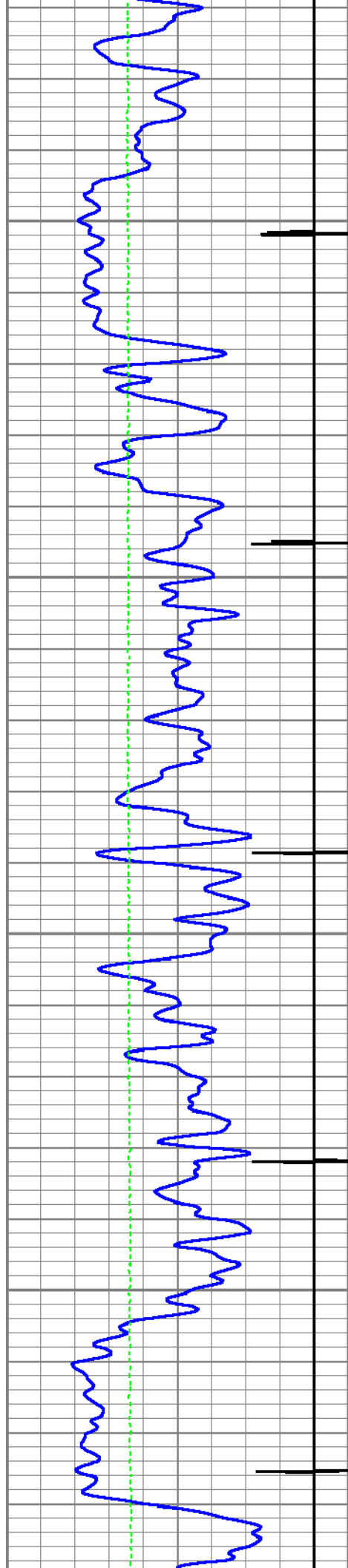




8600

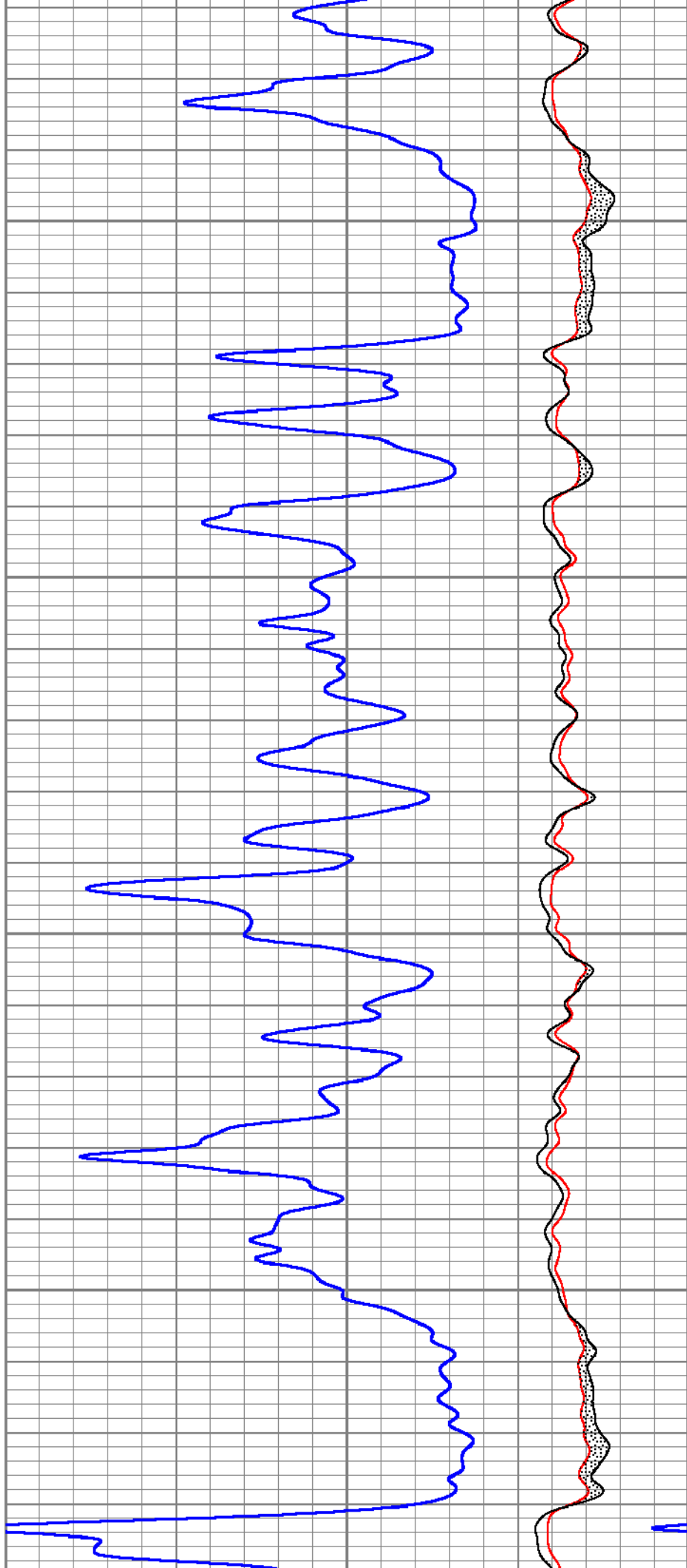
8700

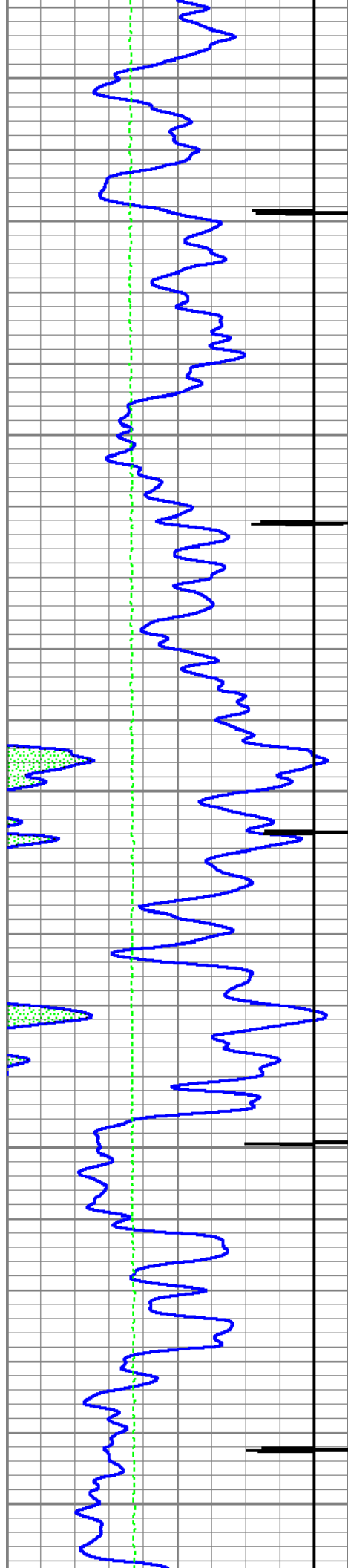




8800

8900

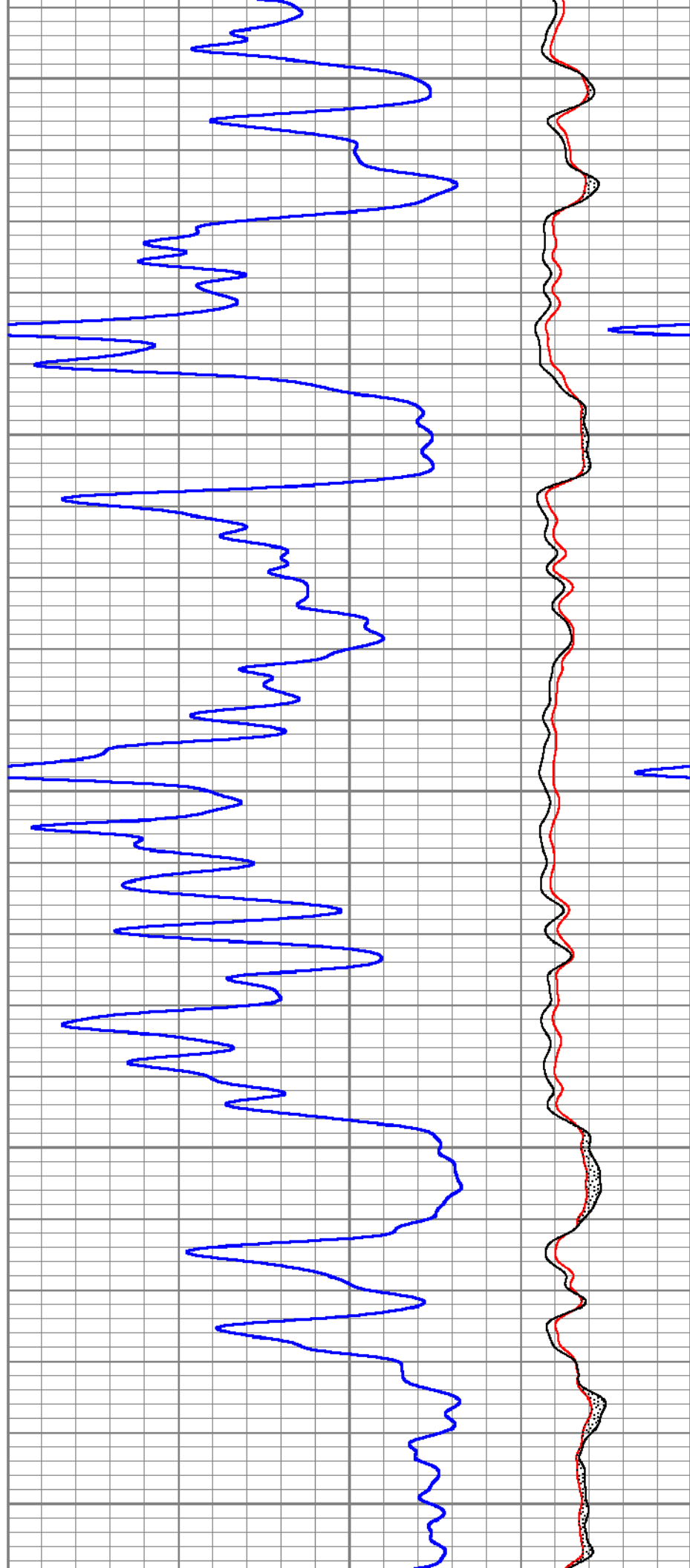


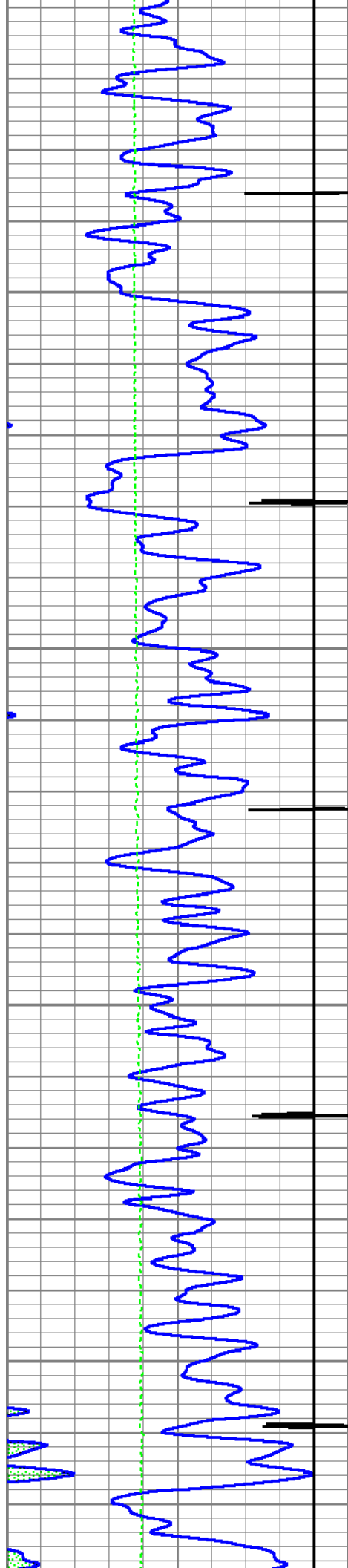


9000

9100

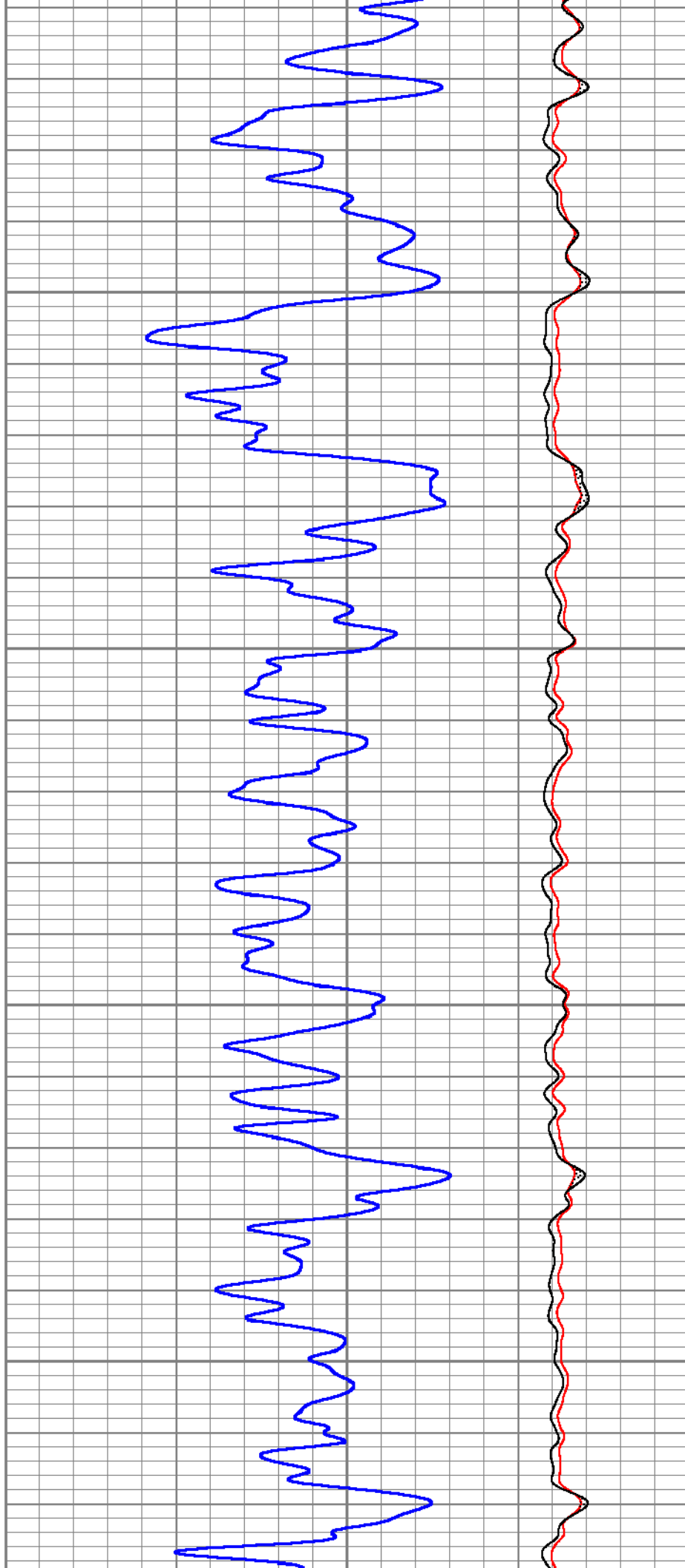
9200

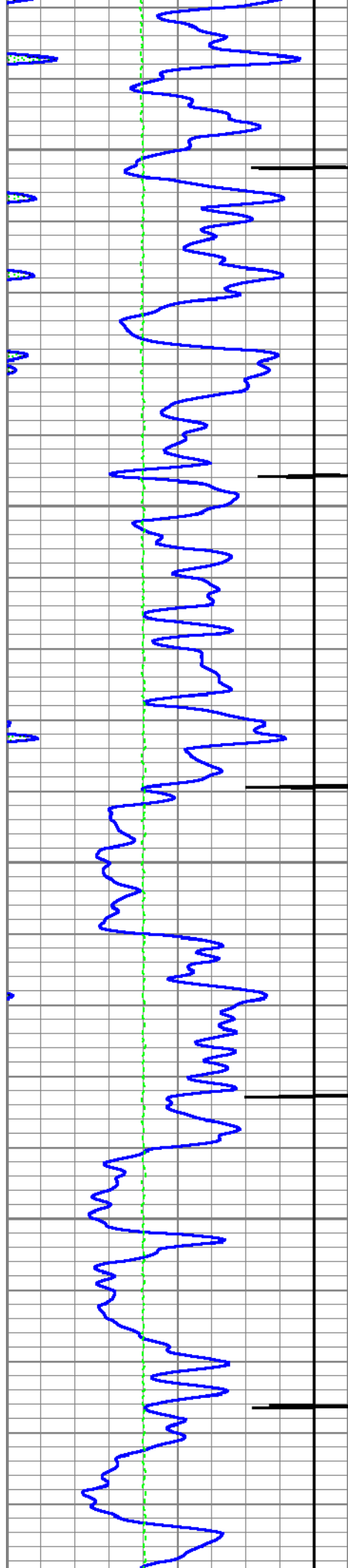




9300

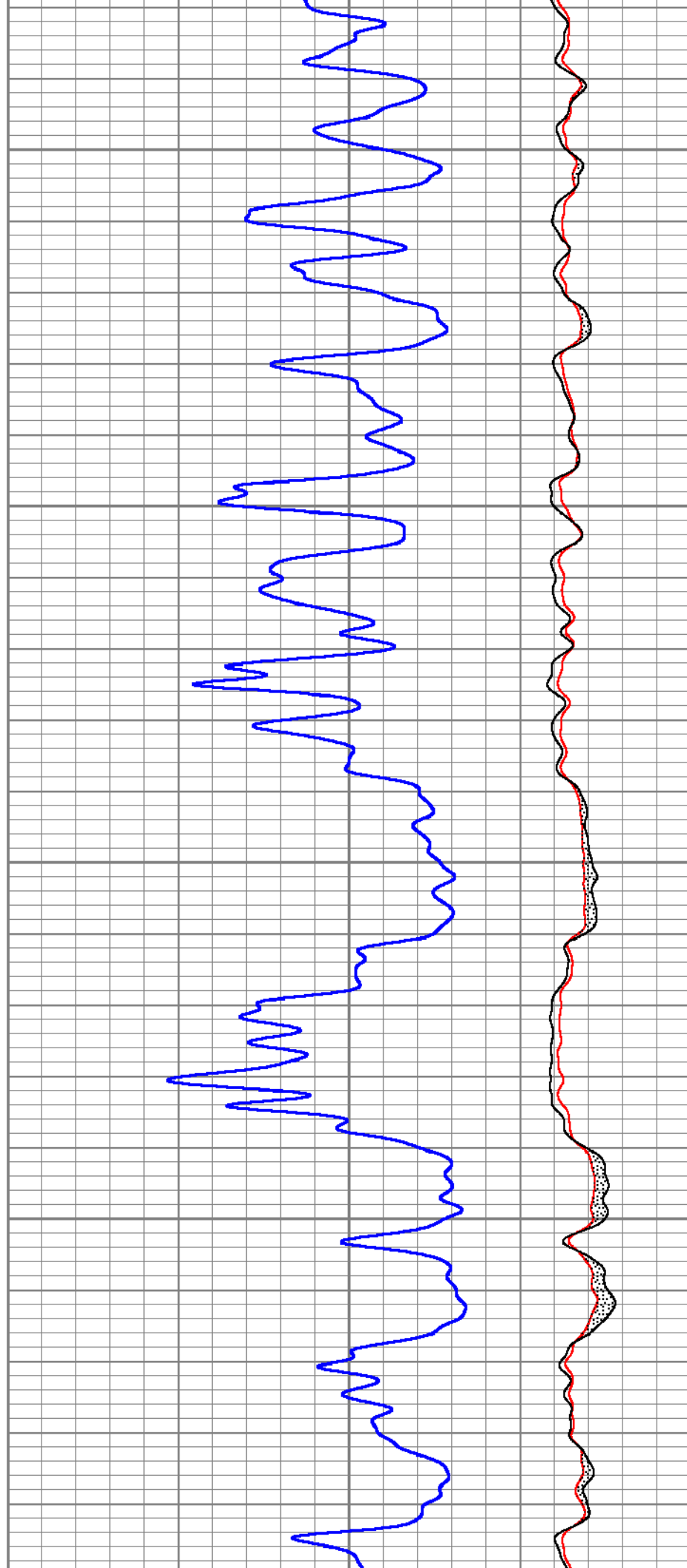
9400

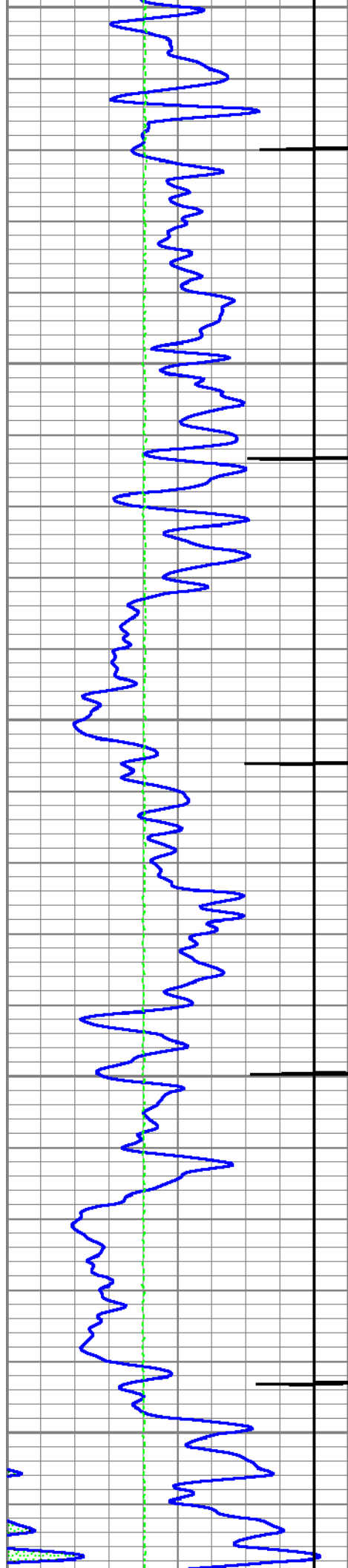




9500

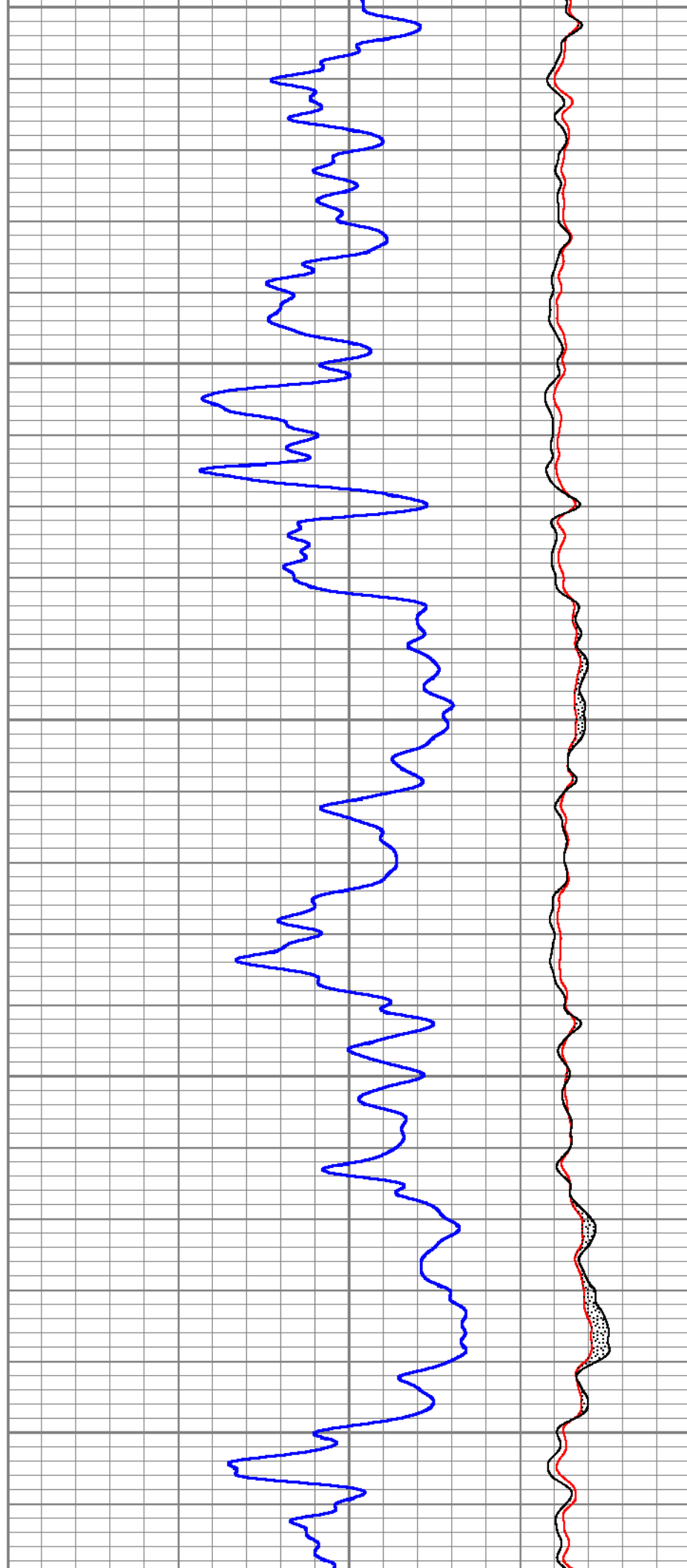
9600

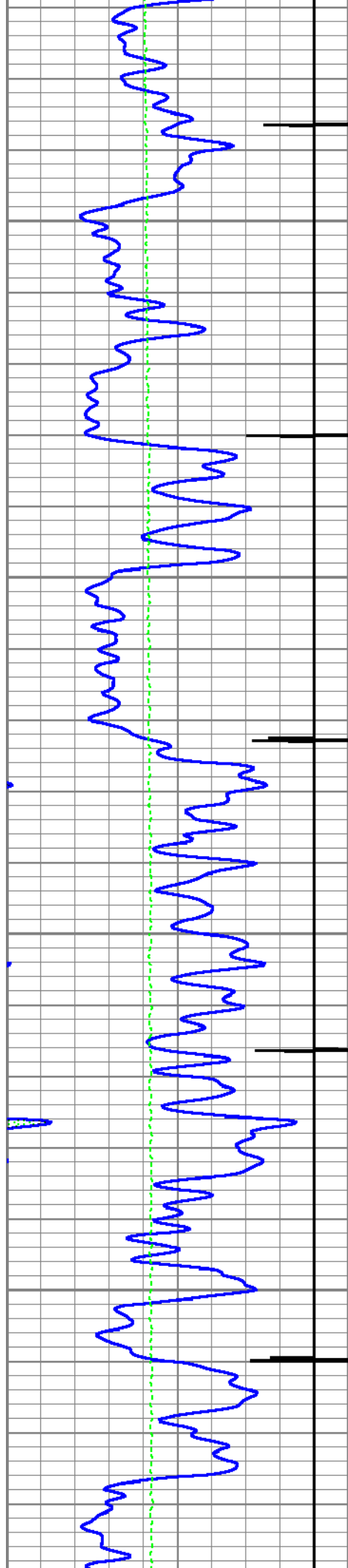




9700

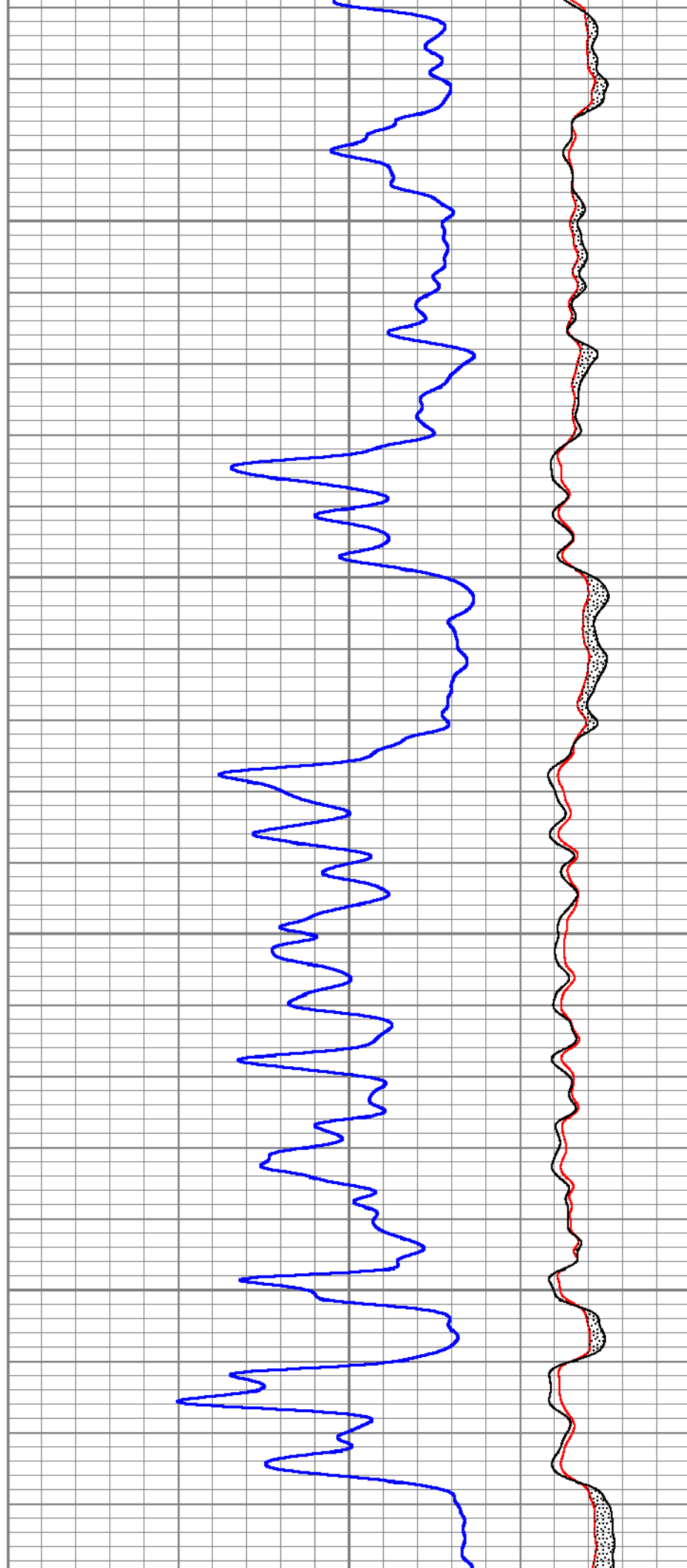
9800

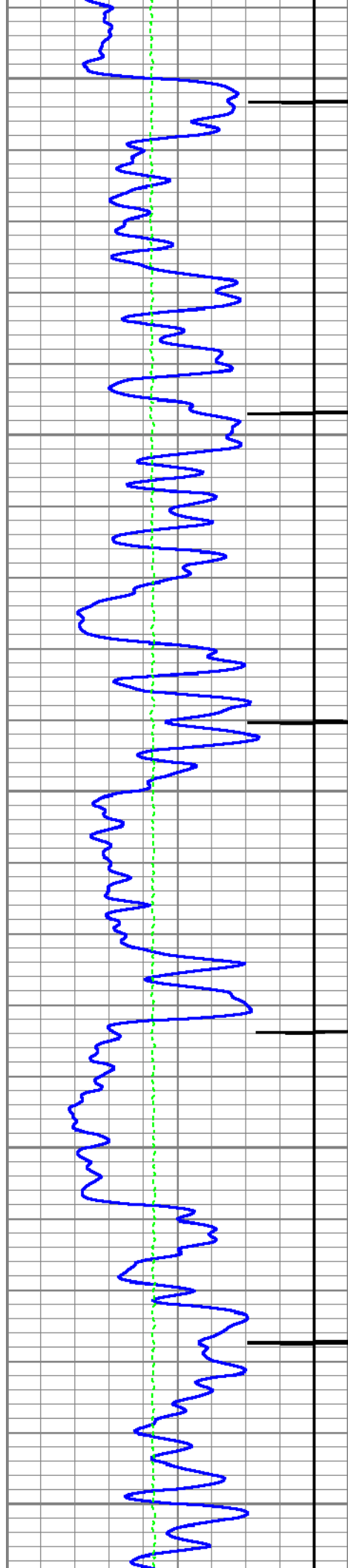




9900

10000

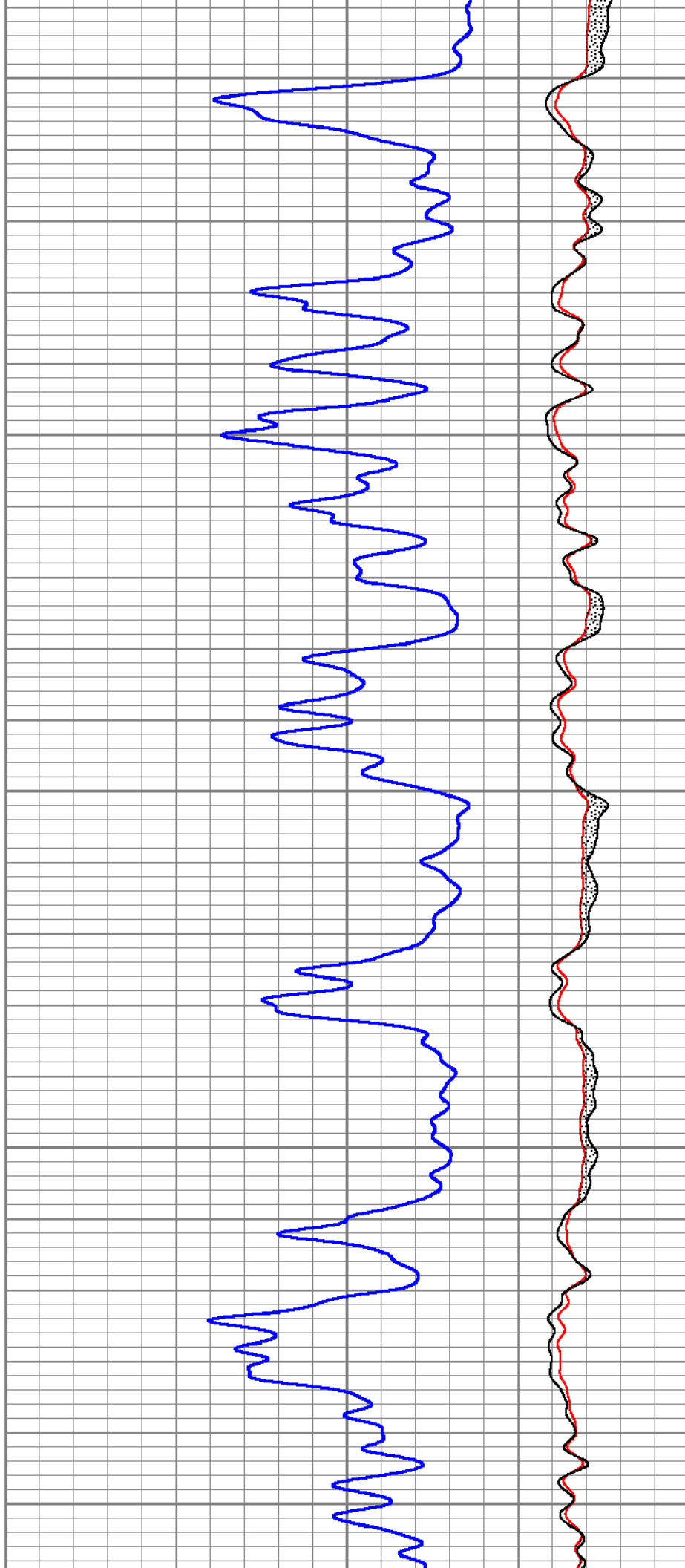


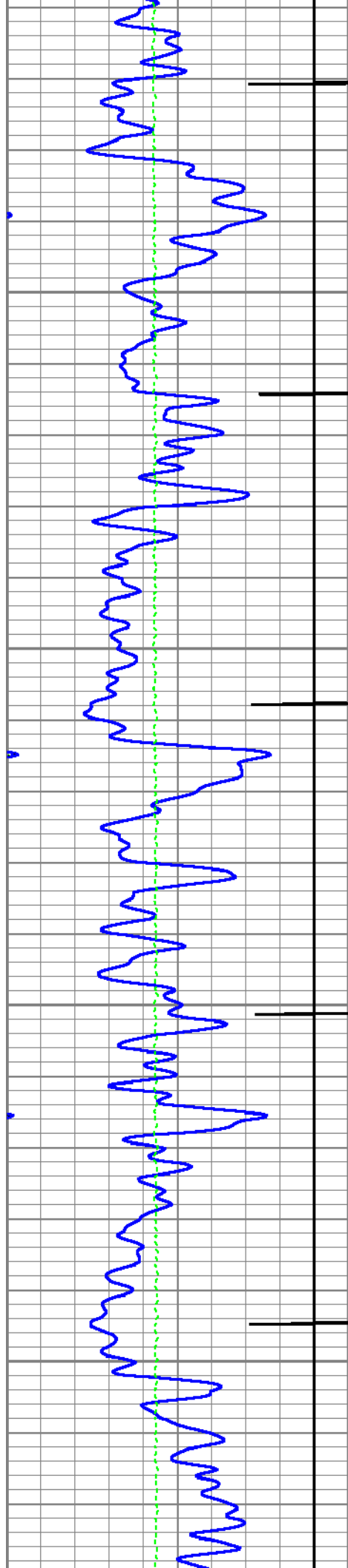


10100

10200

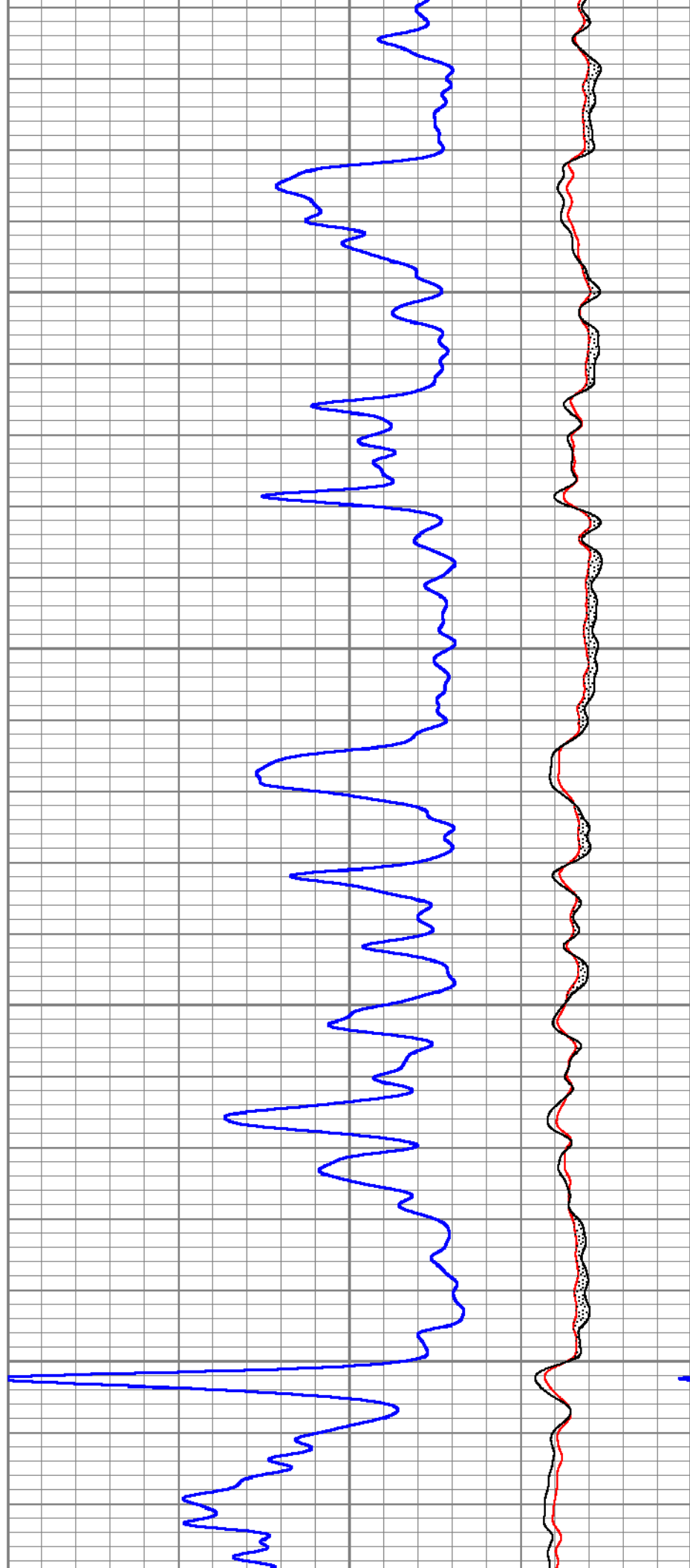
10300

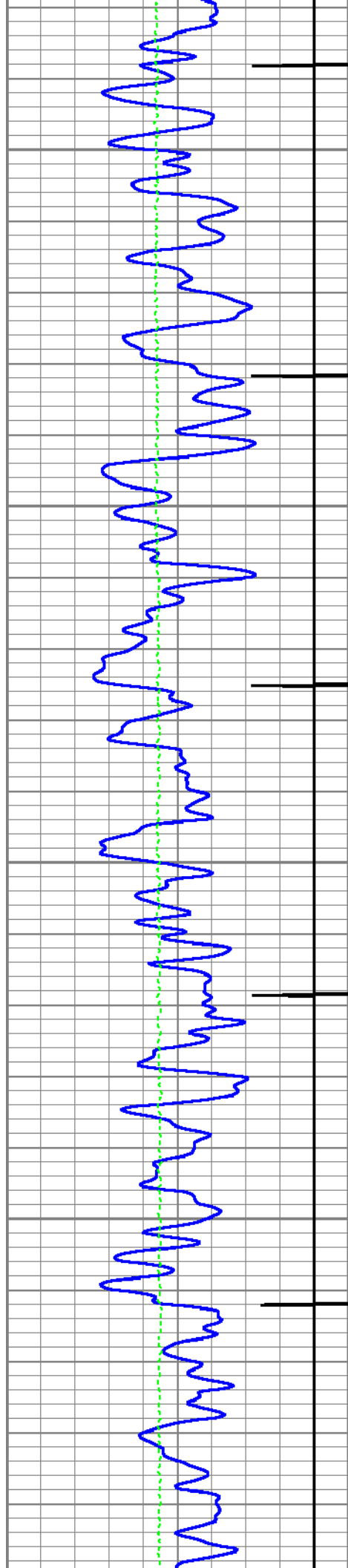




10400

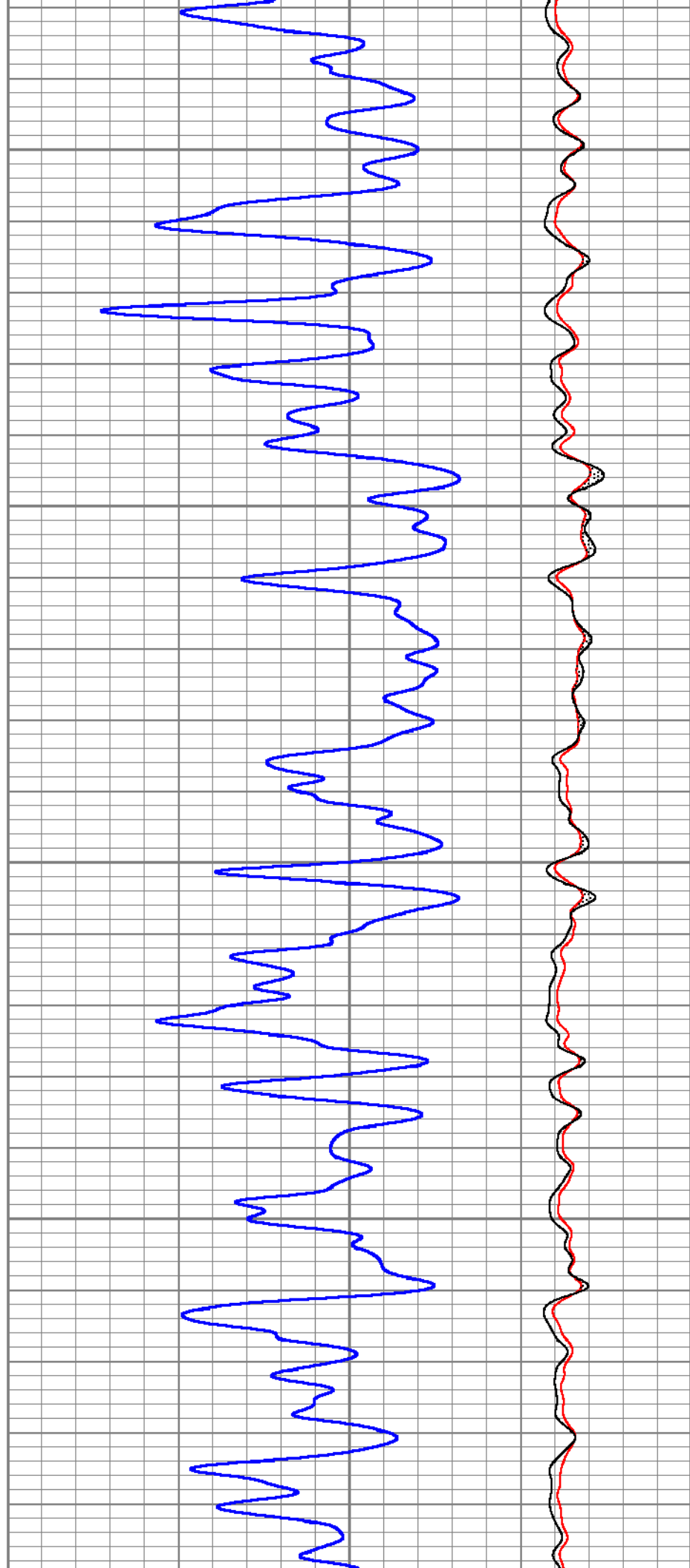
10500

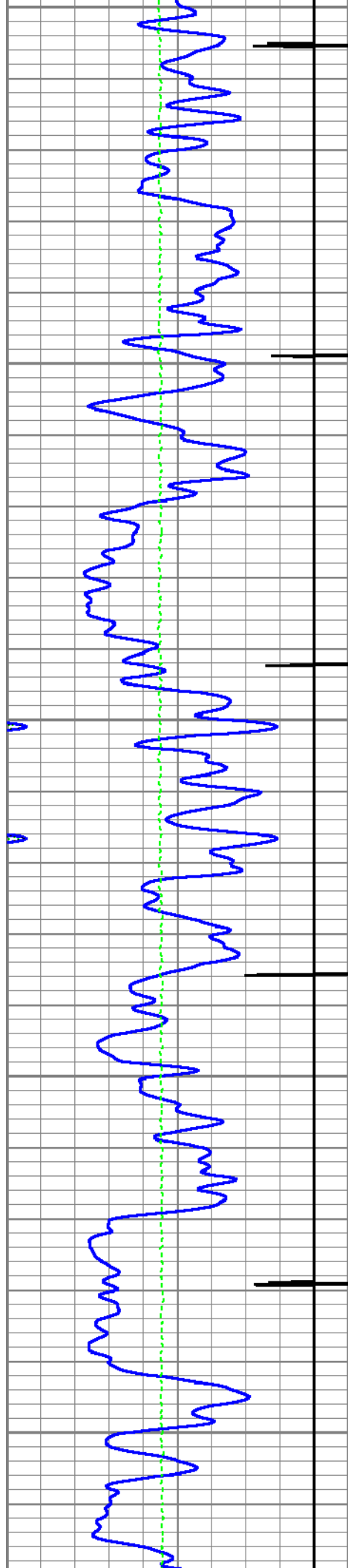




10600

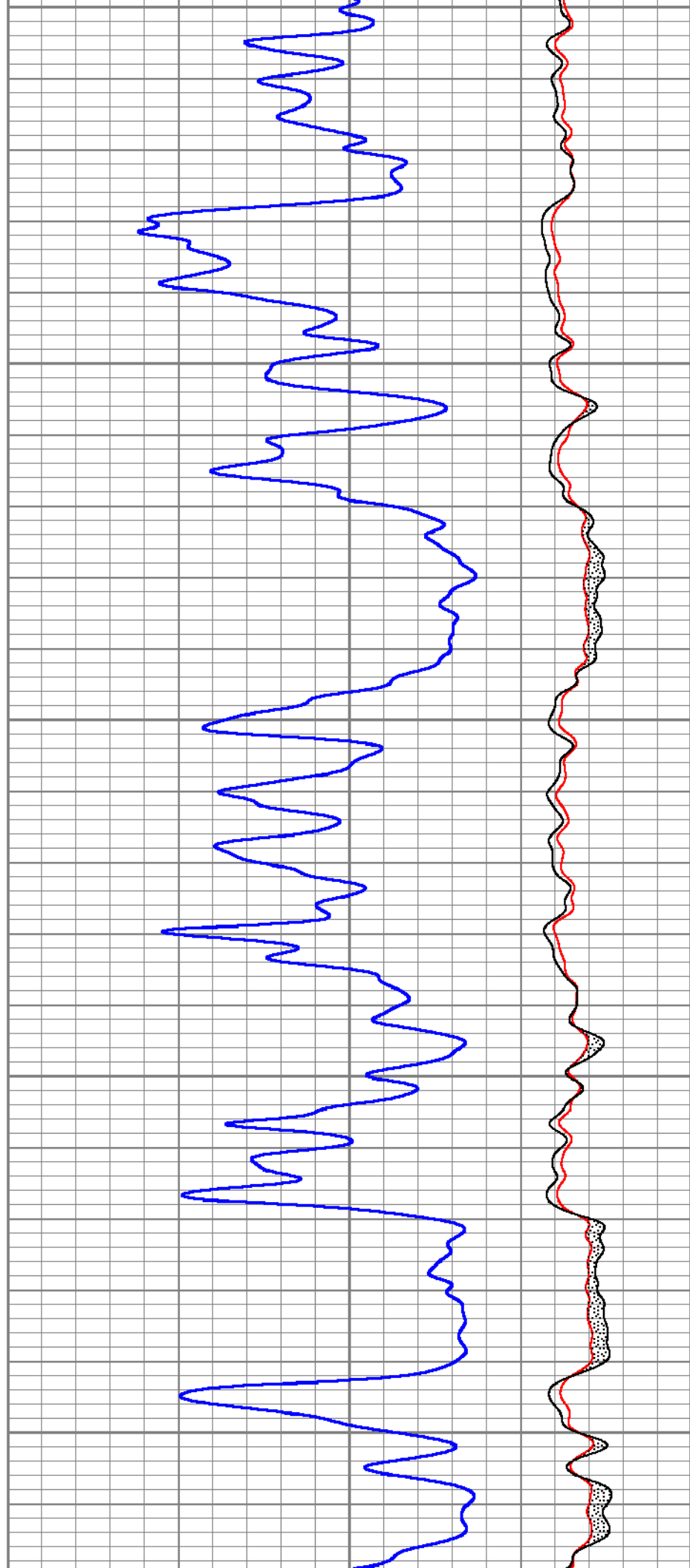
10700

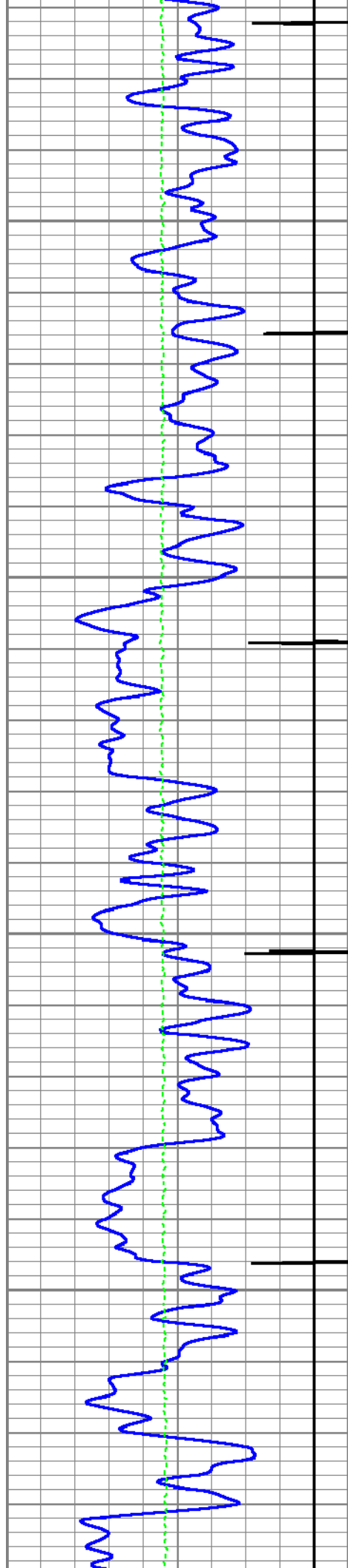




10800

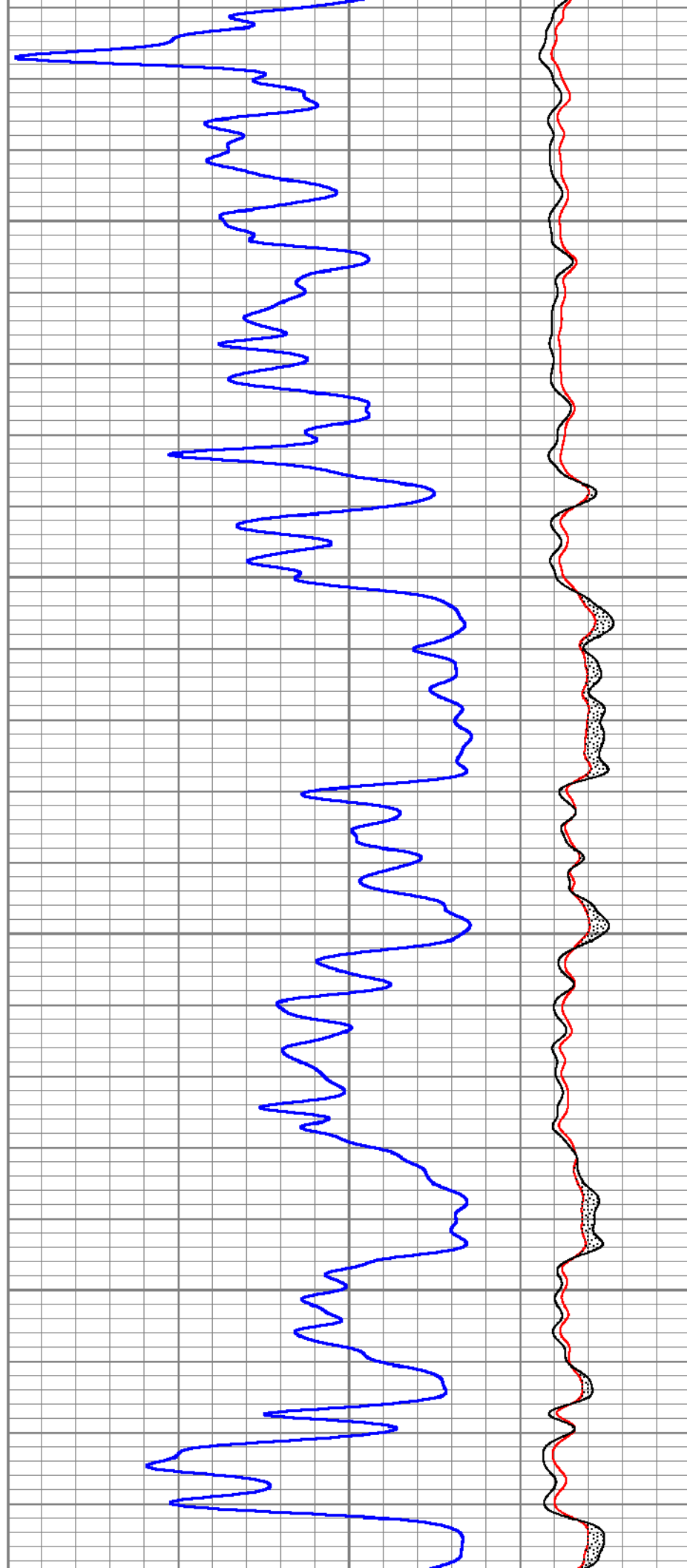
10900

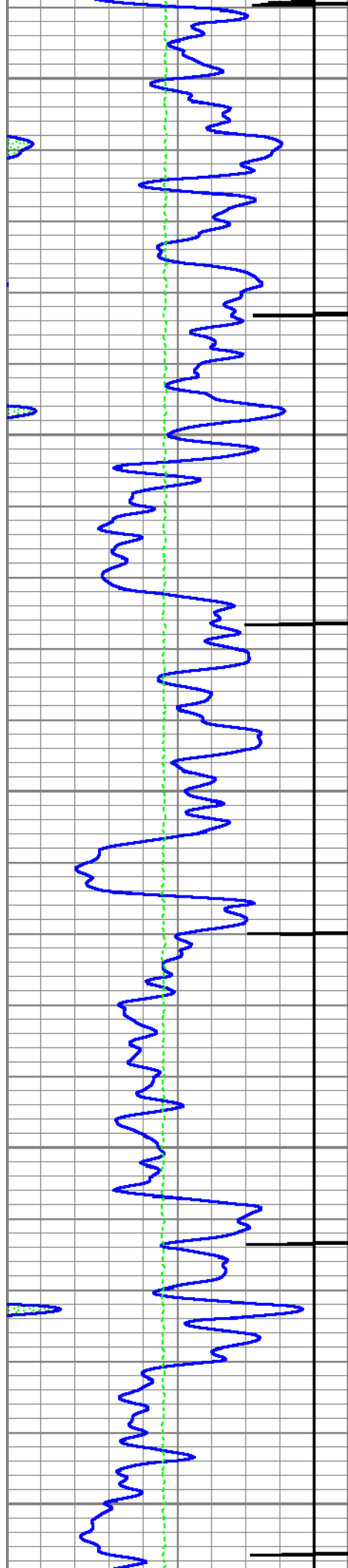




11000

11100

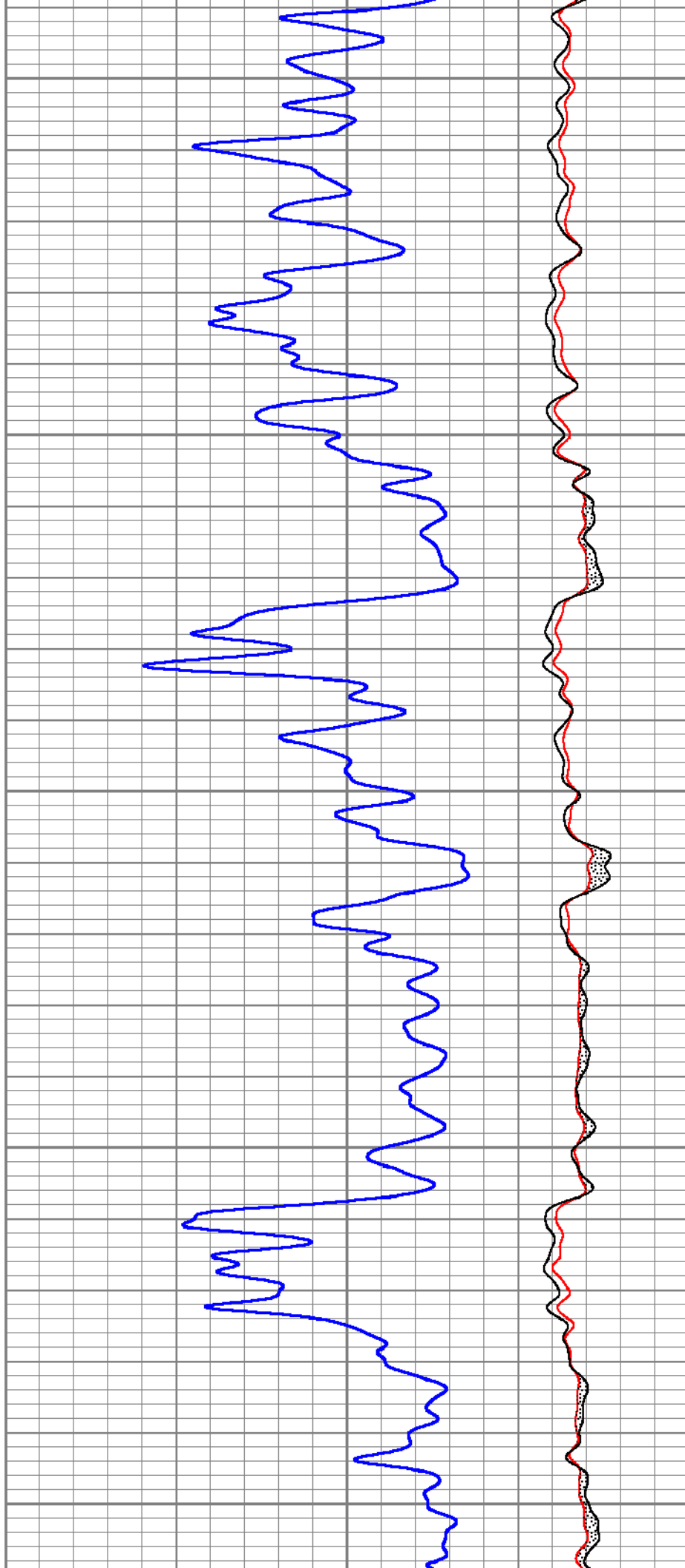


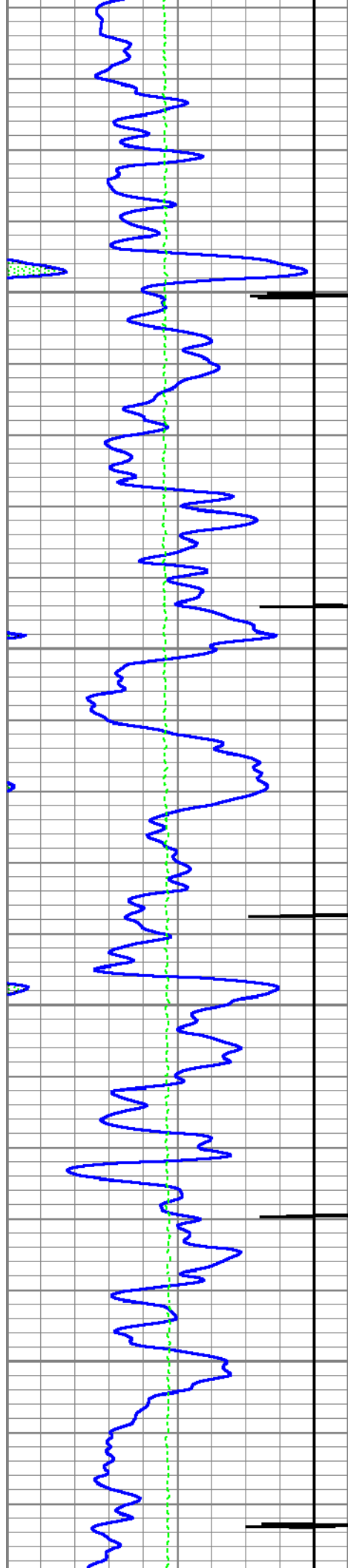


11200

11300

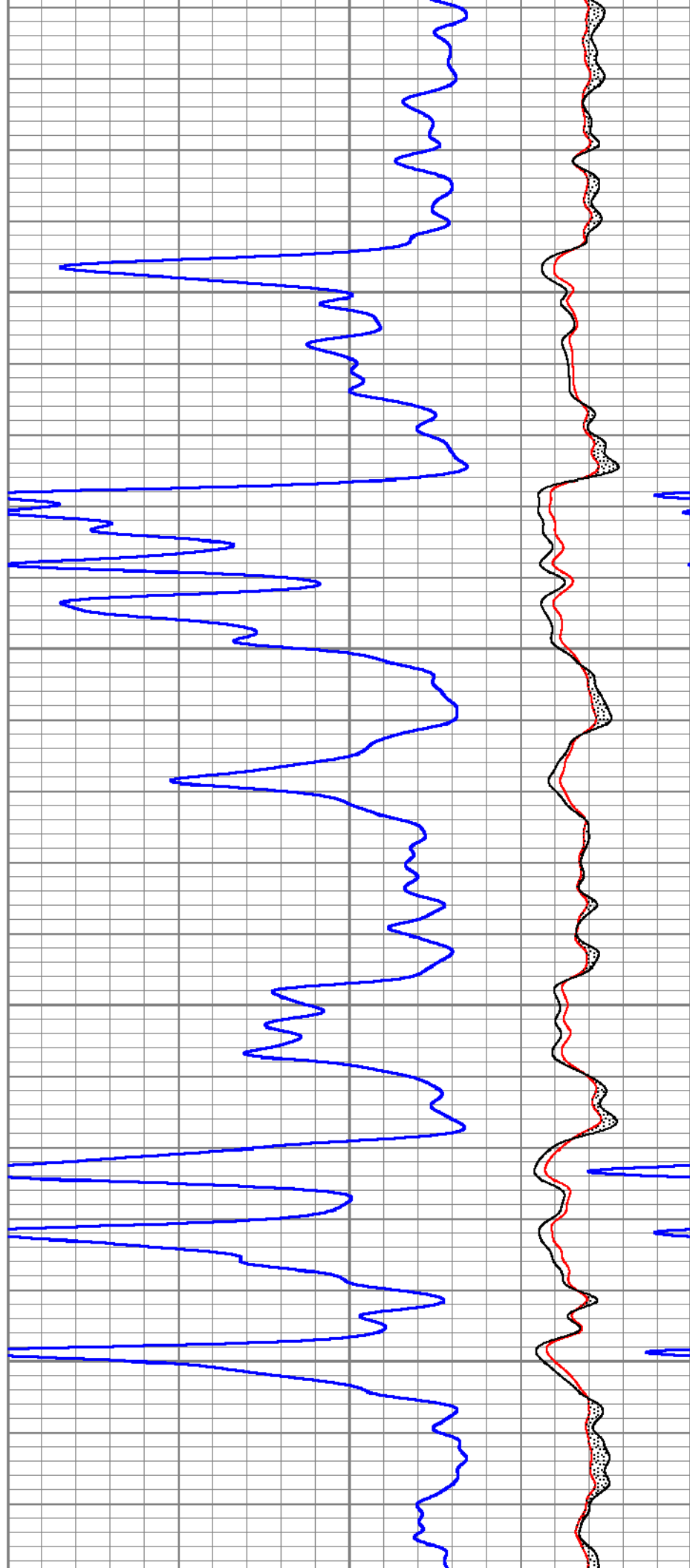
11400

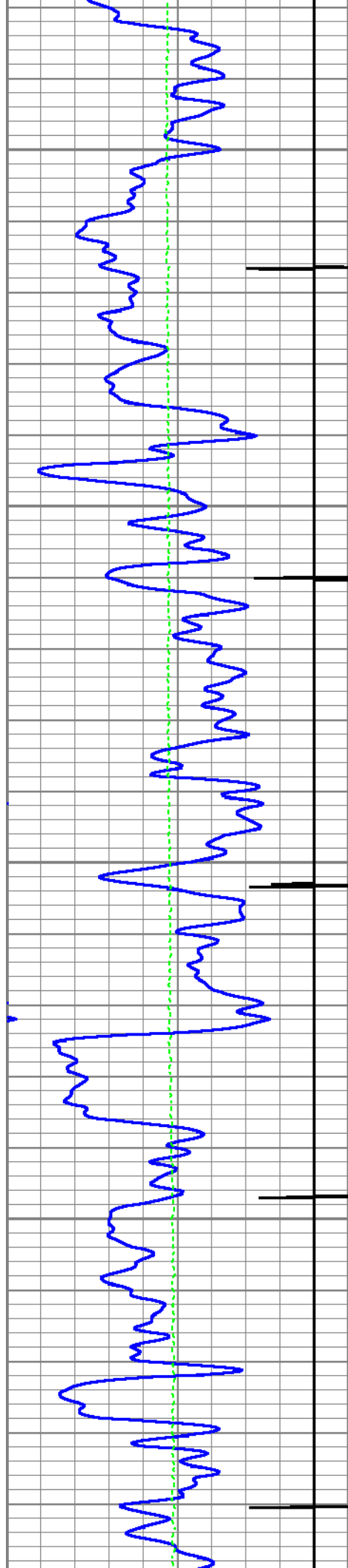




11500

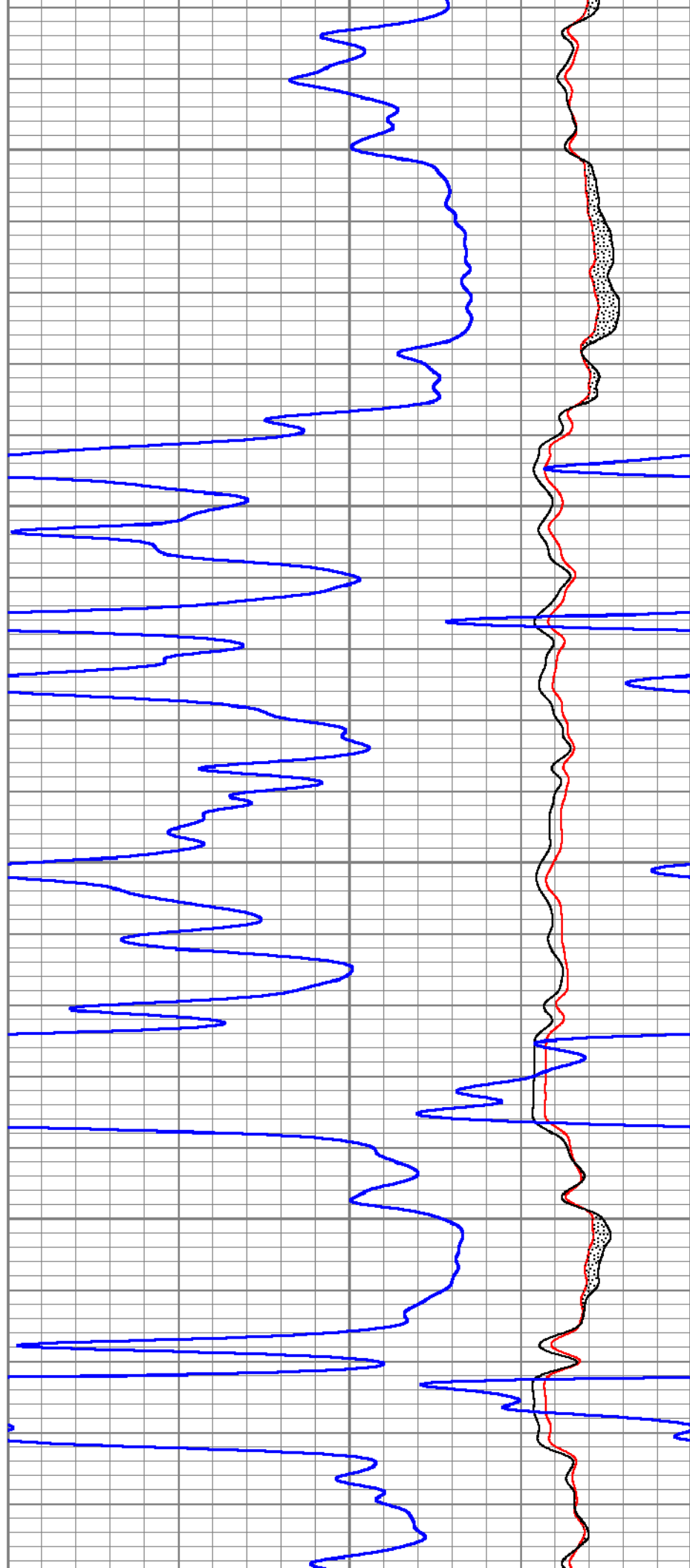
11600

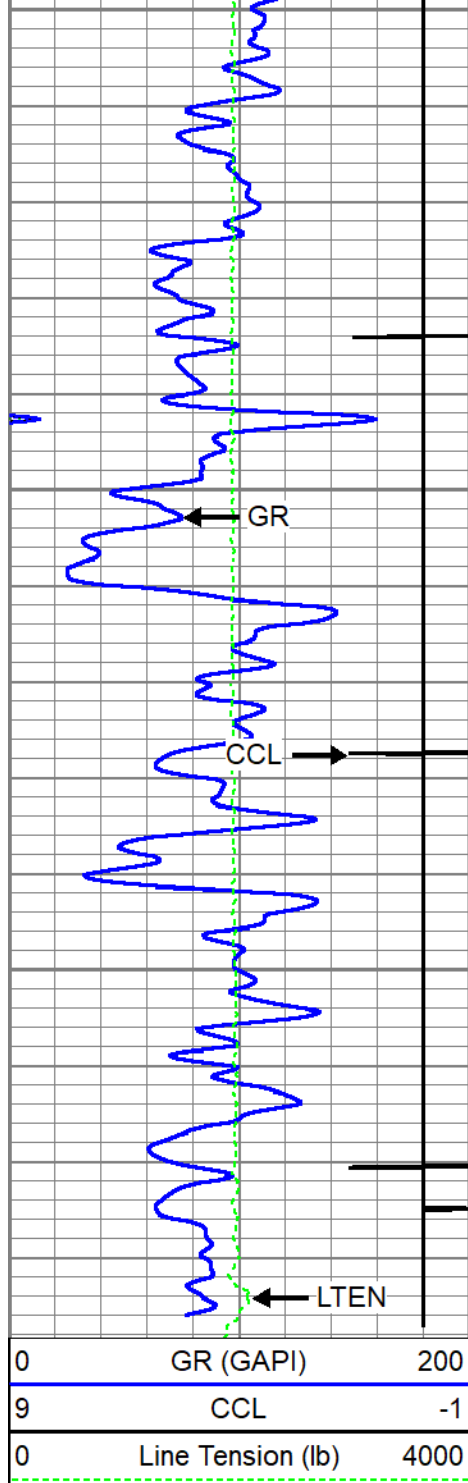




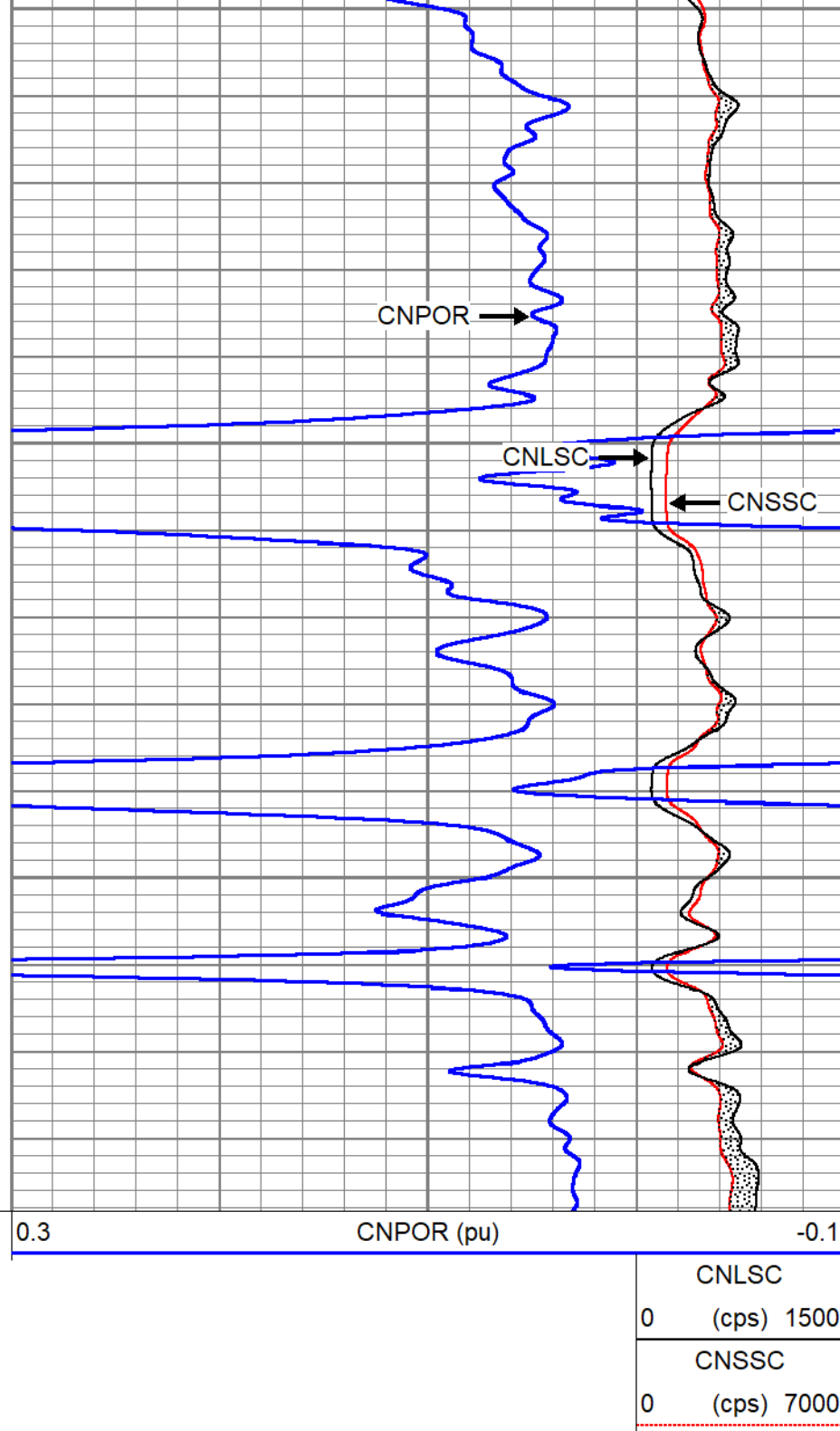
11700

11800





11900



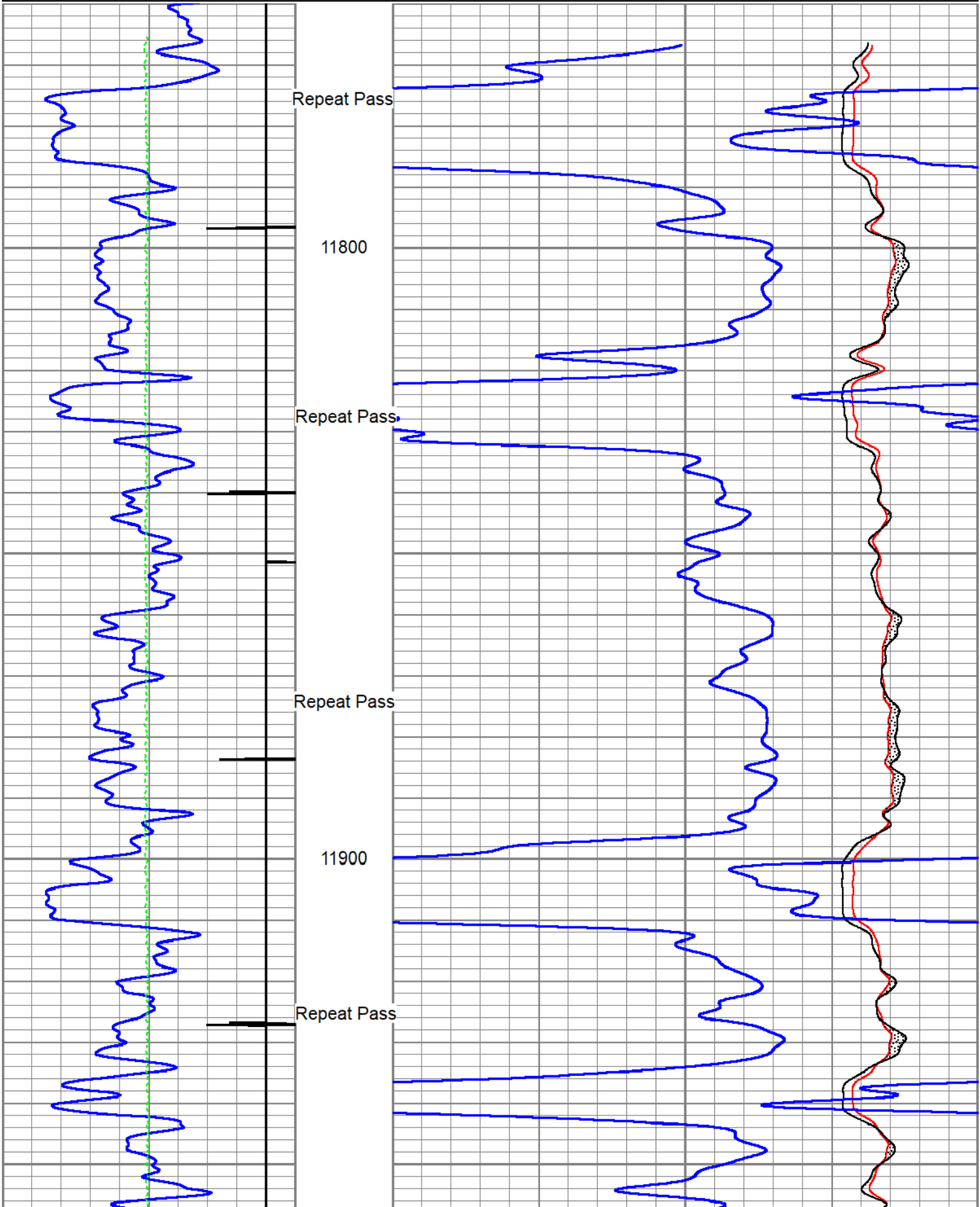
Repeat Pass 5" = 100'

Database File caerus_bju b26 fed 11a-26-496_rcbl_cnl_8-11-2022.db
 Dataset Pathname repeat
 Presentation Format twg_cnl
 Dataset Creation Thu Aug 11 10:44:55 2022
 Charted by Depth in Feet scaled 1:240



9	CCL	-1
0	Line Tension (lb)	4000

CNLSC
0 (cps) 1500
CNSSC
0 (cps) 7000



<div> <div>Calibration Report</div> <div> <div>Database File</div> <div>caerus_bju b26 fed 11a-26-496_rcbl_cnl_8-11-2022.db</div> </div> <div> <div>Dataset Pathname</div> <div>main</div> </div> <div> <div>Dataset Creation</div> <div>Thu Aug 11 10:50:55 2022</div> </div> </div>				
Compensated Neutron Calibration Report				
Model:		CNT - 275Dig		
Serial Number:		FW1409-35		
SHOP CALIBRATION		Thu Mar 31 15:47:13 2022		
	Cal Tube	Units		
Tank Ratio	11.6940	SS/LS		
LS Detector	68.71	cps		
SS Detector	748.49	cps		
Tool Ratio	10.8929	SS/LS		
Tool Gain	1.0735	----		
PRE-SURVEY VERIFICATION				
	SS Detector	LS Detector	Measured (p.u.)	Target (p.u.)
POST-SURVEY VERIFICATION				
	SS Detector	LS Detector	Measured (p.u.)	Target (p.u.)

PRIMARY VERIFICATION

Background	0.0		cps
Calibrator	0.0		cps
Difference		0.0	GAPI

BEFORE SURVEY VERIFICATION

Background	0.0		cps
Calibrator	0.0		cps
Difference		0.0	GAPI

AFTER SURVEY VERIFICATION

Background	0.0		cps
Calibrator	0.0		cps
Difference		0.0	GAPI

Segmented Cement Bond Log Calibration Report

Serial Number: FW1312-30
Tool Model: Probe275acc

Calibration Casing Diameter: 4.500 in
Calibration Depth: 38.050 ft

Master Calibration, performed Wed Aug 10 13:22:25 2022:

	Raw (v)		Calibrated (mv)		Results	
	Zero	Cal	Zero	Cal	Gain	Offset
3'	0.003	0.662	0.000	81.196	123.155	-0.316
CAL	0.004	0.667				
5'	0.001	0.652	0.000	81.196	124.660	-0.079
SUM						
S1	0.003	0.671	0.000	100.000	149.645	-0.471
S2	0.003	0.679	0.000	100.000	147.905	-0.413
S3	0.003	0.667	0.000	100.000	150.439	-0.382
S4	0.002	0.663	0.000	100.000	151.228	-0.338
S5	0.003	0.671	0.000	100.000	149.579	-0.424
S6	0.003	0.672	0.000	100.000	149.391	-0.425
S7	0.002	0.670	0.000	100.000	149.784	-0.368
S8	0.003	0.669	0.000	100.000	149.993	-0.410

Internal Reference Calibration, performed (Not Performed):

	Raw (v)		Calibrated (v)		Results	
	Zero	Cal	Zero	Cal	Gain	Offset
CAL	0.000	0.000	0.004	0.667	1.000	0.000

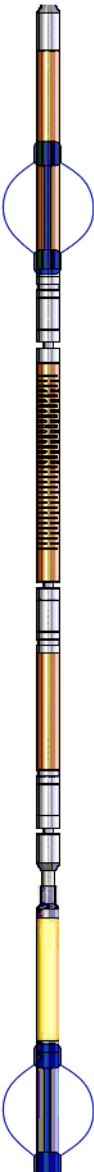
Air Zero Calibration, performed Wed Aug 10 13:22:44 2022:

	Raw (v)		Calibrated (v)		Results	
	Zero		Zero		Offset	
3'	0.003		0.000			0.000
5'	0.002		0.000			-0.001
SUM						
S1	0.003		0.000			0.001

S2	0.002	0.000	0.000
S3	0.002	0.000	0.000
S4	0.002	0.000	-0.000
S5	0.003	0.000	0.000
S6	0.003	0.000	0.000
S7	0.002	0.000	0.000
S8	0.003	0.000	-0.000

Inclinometer Calibration Report

Performed:	Thu Jul 28 15:46:49 2022				
	Low Read.	High Read.	Low Ref.	High Ref.	
X Accelerometer	-931.00	904.00	-1.00	1.00	gee
Y Accelerometer	-899.00	884.00	-1.00	1.00	gee
Z Accelerometer	1.47	886.18	0.00	1.00	gee

Sensor	Offset (ft)	Schematic	Description	Length (ft)	O.D. (in)	Weight (lb)
			SO BS CENT-2750-4500 Slip Over 2-3/4" I.D. for 4-1/2" O.D. Casing Bow Spring Centralizer	1.33	3.25	10.00
WVFS8	14.27		RBT8acc-Probe275acc (FW1312-30) 2.75" Radial Corrosion with accelerometer	8.75	2.75	110.00
WVFS7	14.27					
WVFS6	14.27					
WVFS5	14.27					
WVFS4	14.27					
WVFS3	14.27					
WVFS2	14.27					
WVFS1	14.27					
WVF3FT	14.27					
WVF5FT	13.27					
RBT_ACCZ	10.02					
RBT_ACCY	10.02					
RBT_ACCX	10.02					
WVFSYNC	10.02					
WVFCAL	10.02					
DCCL	9.11					
CCL	9.11					
GR	7.78		SO BS CENT-2750-4500 Slip Over 2-3/4" I.D. for 4-1/2" O.D. Casing Bow Spring Centralizer	1.33	3.25	10.00
			GR-Probe275dig (FW1403-107) Probe Digital Gamma CCL	4.78	2.75	57.00

