

BJU B26 FED 11A-26 496
Garfield County, CO
Q220698 & RM-220640
Design #2

Company Name: Caerus Oil & Gas
BJU B26 FED 11A-26 496
Garfield County, CO
Rig: H&P #330
Created By: Will Jircik
Date: 3:23, July 26 2022



WELL DETAILS: BJU B26 FED 11A-26 496						
			8211.0			
+N/-S	+E/-W	Northing	Easting	Latitude	Longitude	
0.0	0.0	14421542.00	2445815.10	39.677714	-108.137809	11A-26

PROJECT DETAILS:		Garfield County, CO
System Datum:	Universal Transverse Mercator (US Survey Feet)	
Datum:	NAD 1927 - Western US	
Ellipsoid:	Clarke 1866	
Zone:	Zone 12N (114 W to 108 W)	
Geodetic System:	Mean Sea Level	

DESIGN TARGET DETAILS						
Name	TVD	+N/-S	+E/-W	Northing	Easting	Latitude
11A-26 - OHCR	8117.0	993.9	-552.5	14422517.79	2445231.13	39.680441
11A-26 - PBLH	12044.0	959.7	-646.5	14422480.60	2445138.30	-108.139772

DESIGN ANNOTATIONS									
MD	Inc	Azi	TVD	+N/-S	+E/-W	VSec	Departure	Annotation	
120.0	0.27	216.65	120.0	-0.4	-0.3	-0.2	0.0	Conductor Tie in	
157.9	1.00	330.95	157.9	-0.2	-0.5	0.1	0.4	EOB @ 1.00" Inc. / 330.95° Azm	
275.0	1.00	330.95	275.0	1.6	-1.5	2.2	2.5	Build 3" / 100'	
525.2	8.51	330.95	524.1	19.7	-11.5	22.8	23.2	EOB @ 8.51" Inc. / 330.95° Azm	
7916.9	8.51	330.95	7834.5	975.6	-542.3	1112.1	1116.5	Drop 3" / 100'	
8200.4	0.00	0.00	8117.0	993.9	-552.5	1133.0	1137.5	EOD @ Vertical / Build 1.5" / 100'	
8298.9	1.48	250.00	8215.5	993.5	-553.7	1133.3	1138.8	EOB @ 1.48" Inc. / 250.00° Azm	
12128.7	1.48	250.00	12044.0	959.7	-646.5	1157.2	1237.5	TD @ 12128.7" MD / 12044.0" TVD	

FORMATION TOP DETAILS		
TVDPath	MDPath	Formation
3401.0	3434.1	Wasatch
5801.0	5860.7	Wasatch G
5848.0	5908.3	Top Injection Zone
6101.0	6164.1	Fort Union
6291.0	6356.2	Top Influx Sand
6382.0	6448.2	Bot Influx Sand
7882.0	7964.8	Bot Injection Zone
8117.0	8200.4	Ohio Creek / TOG
8450.0	8533.5	Williams Fork
11344.0	11428.5	Cameo
11844.0	11928.6	Rollins

T

M

Azimuths to True North

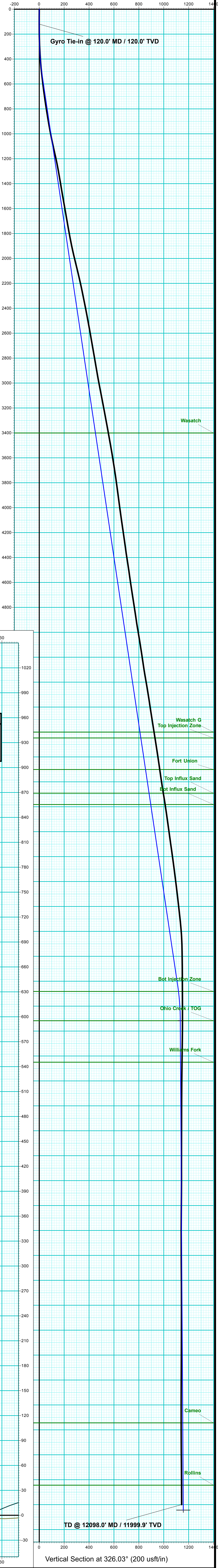
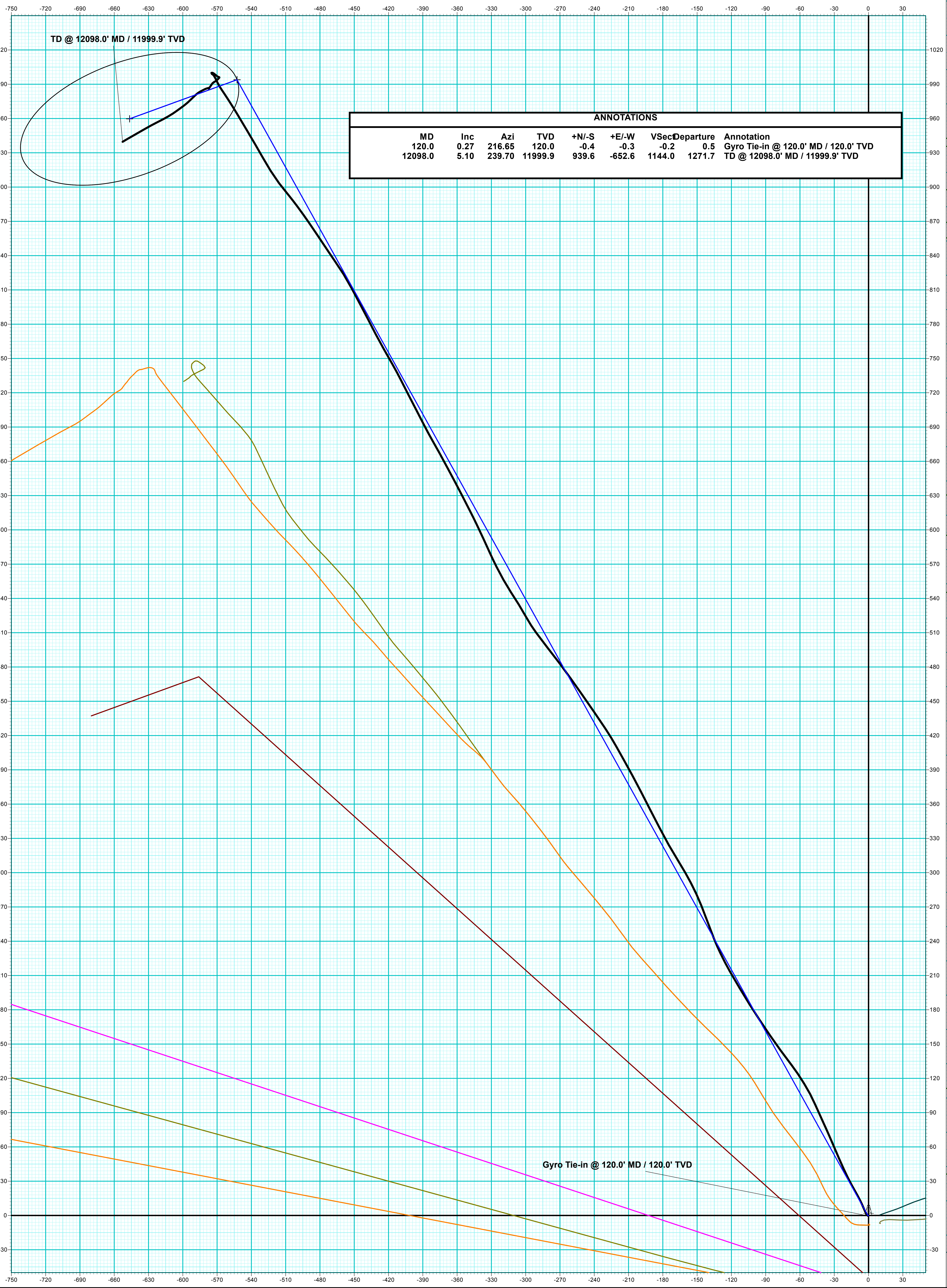
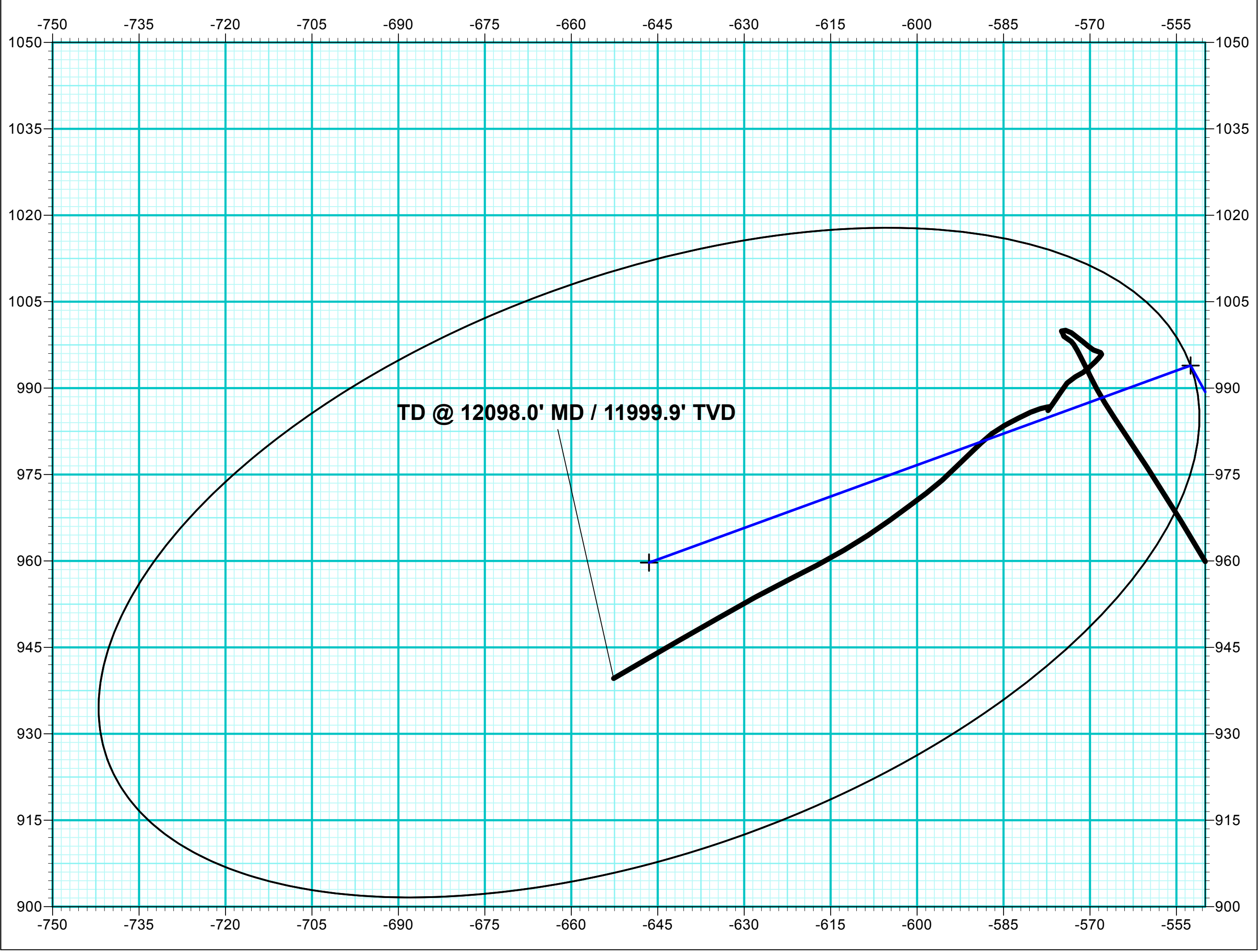
Magnetic North: 9.22°

Strength: 51065.4nT

Dip Angle: 65.72°

Date: 7/18/2022

Model: HDGM2022



Vertical Section at 326.03° (200 usft/in)



Caerus Oil & Gas

Garfield County, CO

BJU B26 496 Pad

BJU B26 FED 11A-26 496 - Slot 11A-26

Wellbore #1

Design: Wellbore #1

KLX Survey Report

26 July, 2022



Company:	Caerus Oil & Gas	Local Co-ordinate Reference:	Well BJU B26 FED 11A-26 496 - Slot 11A-26
Project:	Garfield County, CO	TVD Reference:	RKB @ 8241.0usft (H&P #330)
Site:	BJU B26 496 Pad	MD Reference:	RKB @ 8241.0usft (H&P #330)
Well:	BJU B26 FED 11A-26 496	North Reference:	True
Wellbore:	Wellbore #1	Survey Calculation Method:	Minimum Curvature
Design:	Wellbore #1	Database:	EDM 5000.1 Single User Db

Project	Garfield County, CO		
Map System:	Universal Transverse Mercator (US Survey Feet)	System Datum:	Mean Sea Level
Geo Datum:	NAD 1927 - Western US		
Map Zone:	Zone 12N (114 W to 108 W)		

Site		BJU B26 496 Pad			
Site Position:		Northing:	14,421,469.70 usft	Latitude:	39.677515
From:	Map	Easting:	2,445,821.30 usft	Longitude:	-108.137796
Position Uncertainty:	0.0 usft	Slot Radius:	13-3/16 "	Grid Convergence:	1.83 °

Well	BJU B26 FED 11A-26 496 - Slot 11A-26					
Well Position	+N/-S	0.0 usft	Northing:	14,421,542.00 usft	Latitude:	39.677714
	+E/-W	0.0 usft	Easting:	2,445,815.10 usft	Longitude:	-108.137809
Position Uncertainty		0.0 usft	Wellhead Elevation:	usft	Ground Level:	8,211.0 usft

Wellbore	Wellbore #1				
Magnetics	Model Name	Sample Date	Declination (°)	Dip Angle (°)	Field Strength (nT)
	HDGM2022	7/18/2022	9.22	65.72	51,065.40000000

Design	Wellbore #1				
Audit Notes:					
Version:	1.0	Phase:	ACTUAL	Tie On Depth:	0.0
Vertical Section:	Depth From (TVD) (usft)	+N/-S (usft)	+E/-W (usft)	Direction (°)	
	0.0	0.0	0.0	325.22	

Survey Program	Date	7/26/2022			
From (usft)	To (usft)	Survey (Wellbore)	Tool Name	Description	
30.0	120.0	Sfc Gyro (Wellbore #1)	GYRO-NS	OWSG Gyrocompass Gyro	
242.0	12,098.0	KLX MWD (Wellbore #1)	MWD	OWSG MWD - Standard	

Survey										
Measured Depth (usft)	Inclination (°)	Azimuth (°)	Vertical Depth (usft)	+N/-S (usft)	+E/-W (usft)	Vertical Section (usft)	Dogleg Rate (°/100usft)	Build Rate (°/100usft)	Turn Rate (°/100usft)	
0.0	0.00	0.00	0.0	0.0	0.0	0.0	0.00	0.00	0.00	
30.0	0.00	0.00	30.0	0.0	0.0	0.0	0.00	0.00	0.00	
60.0	0.47	198.64	60.0	-0.1	0.0	-0.1	1.57	1.57	0.00	
90.0	0.29	238.97	90.0	-0.3	-0.1	-0.1	1.04	-0.60	134.43	
Gyro Tie-in @ 120.0' MD / 120.0' TVD										
120.0	0.27	216.65	120.0	-0.4	-0.3	-0.2	0.37	-0.07	-74.40	
242.0	1.40	320.20	242.0	0.5	-1.4	1.2	1.22	0.93	84.88	
334.0	3.20	336.40	333.9	3.8	-3.1	4.9	2.06	1.96	17.61	
426.0	4.50	336.70	425.7	9.4	-5.6	10.9	1.41	1.41	0.33	
516.0	6.40	331.00	515.3	17.1	-9.4	19.4	2.19	2.11	-6.33	

Company:	Caerus Oil & Gas	Local Co-ordinate Reference:	Well BJU B26 FED 11A-26 496 - Slot 11A-26
Project:	Garfield County, CO	TVD Reference:	RKB @ 8241.0usft (H&P #330)
Site:	BJU B26 496 Pad	MD Reference:	RKB @ 8241.0usft (H&P #330)
Well:	BJU B26 FED 11A-26 496	North Reference:	True
Wellbore:	Wellbore #1	Survey Calculation Method:	Minimum Curvature
Design:	Wellbore #1	Database:	EDM 5000.1 Single User Db

Survey										
Measured Depth (usft)	Inclination (°)	Azimuth (°)	Vertical Depth (usft)	+N/-S (usft)	+E/-W (usft)	Vertical Section (usft)	Dogleg Rate (°/100usft)	Build Rate (°/100usft)	Turn Rate (°/100usft)	
611.0	7.00	331.10	609.6	26.8	-14.8	30.4	0.63	0.63	0.11	
705.0	8.00	334.90	702.8	37.7	-20.3	42.6	1.19	1.06	4.04	
800.0	9.10	336.80	796.8	50.6	-26.1	56.4	1.20	1.16	2.00	
894.0	9.60	336.60	889.5	64.6	-32.1	71.4	0.53	0.53	-0.21	
989.0	10.80	335.50	983.0	80.0	-39.0	87.9	1.28	1.26	-1.16	
1,083.0	12.30	336.00	1,075.1	97.1	-46.7	106.4	1.60	1.60	0.53	
1,178.0	12.70	328.50	1,167.9	115.3	-56.3	126.8	1.76	0.42	-7.89	
1,272.0	11.10	323.00	1,259.9	131.3	-67.1	146.1	2.08	-1.70	-5.85	
1,367.0	9.40	323.50	1,353.3	144.9	-77.2	163.0	1.79	-1.79	0.53	
1,462.0	9.80	326.10	1,447.0	157.8	-86.3	178.9	0.62	0.42	2.74	
1,556.0	9.90	326.00	1,539.6	171.2	-95.3	195.0	0.11	0.11	-0.11	
1,651.0	10.00	328.30	1,633.2	185.0	-104.2	211.4	0.43	0.11	2.42	
1,745.0	10.00	328.90	1,725.8	198.9	-112.7	227.7	0.11	0.00	0.64	
1,840.0	10.50	330.50	1,819.2	213.5	-121.3	244.5	0.61	0.53	1.68	
1,934.0	12.20	334.30	1,911.4	229.9	-129.8	262.8	1.97	1.81	4.04	
2,029.0	14.00	340.00	2,003.9	249.7	-138.1	283.9	2.33	1.89	6.00	
2,123.0	14.10	338.10	2,095.1	271.0	-146.2	306.0	0.50	0.11	-2.02	
2,218.0	12.70	332.20	2,187.5	291.0	-155.4	327.7	2.06	-1.47	-6.21	
2,312.0	11.60	328.00	2,279.4	308.2	-165.2	347.4	1.50	-1.17	-4.47	
2,407.0	11.30	330.80	2,372.5	324.4	-174.8	366.2	0.66	-0.32	2.95	
2,501.0	10.80	332.60	2,464.8	340.3	-183.4	384.1	0.65	-0.53	1.91	
2,596.0	10.20	332.90	2,558.2	355.6	-191.3	401.2	0.63	-0.63	0.32	
2,690.0	9.90	332.80	2,650.8	370.2	-198.8	417.5	0.32	-0.32	-0.11	
2,785.0	10.20	331.60	2,744.3	384.9	-206.5	433.9	0.39	0.32	-1.26	
2,879.0	9.60	330.60	2,836.9	399.1	-214.3	450.0	0.66	-0.64	-1.06	
2,957.0	9.80	331.00	2,913.8	410.5	-220.8	463.1	0.27	0.26	0.51	
3,059.0	10.90	326.40	3,014.1	426.2	-230.3	481.4	1.35	1.08	-4.51	
3,154.0	11.00	325.40	3,107.4	441.1	-240.4	499.4	0.23	0.11	-1.05	
3,249.0	10.70	325.00	3,200.7	455.8	-250.6	517.3	0.33	-0.32	-0.42	
3,343.0	10.50	324.80	3,293.1	469.9	-260.6	534.6	0.22	-0.21	-0.21	
3,438.0	10.40	322.50	3,386.5	483.8	-270.8	551.8	0.45	-0.11	-2.42	
3,533.0	10.20	322.10	3,480.0	497.2	-281.2	568.8	0.22	-0.21	-0.42	
3,627.0	9.40	323.90	3,572.6	510.0	-290.8	584.8	0.91	-0.85	1.91	
3,721.0	8.90	330.60	3,665.4	522.5	-298.9	599.7	1.25	-0.53	7.13	
3,816.0	8.20	328.30	3,759.4	534.7	-306.1	613.8	0.82	-0.74	-2.42	
3,911.0	7.30	326.50	3,853.5	545.5	-312.9	626.6	0.98	-0.95	-1.89	
4,006.0	8.00	331.30	3,947.7	556.3	-319.5	639.2	1.00	0.74	5.05	
4,100.0	7.50	332.80	4,040.8	567.5	-325.4	651.8	0.57	-0.53	1.60	
4,195.0	8.60	335.80	4,134.9	579.5	-331.1	664.9	1.24	1.16	3.16	
4,290.0	8.30	335.00	4,228.8	592.2	-337.0	678.6	0.34	-0.32	-0.84	
4,384.0	7.70	334.60	4,321.9	604.1	-342.5	691.5	0.64	-0.64	-0.43	
4,479.0	9.10	332.90	4,415.9	616.5	-348.7	705.3	1.50	1.47	-1.79	
4,573.0	8.50	333.00	4,508.8	629.3	-355.2	719.5	0.64	-0.64	0.11	

Company:	Caerus Oil & Gas	Local Co-ordinate Reference:	Well BJU B26 FED 11A-26 496 - Slot 11A-26
Project:	Garfield County, CO	TVD Reference:	RKB @ 8241.0usft (H&P #330)
Site:	BJU B26 496 Pad	MD Reference:	RKB @ 8241.0usft (H&P #330)
Well:	BJU B26 FED 11A-26 496	North Reference:	True
Wellbore:	Wellbore #1	Survey Calculation Method:	Minimum Curvature
Design:	Wellbore #1	Database:	EDM 5000.1 Single User Db

Survey									
Measured Depth (usft)	Inclination (°)	Azimuth (°)	Vertical Depth (usft)	+N/-S (usft)	+E/-W (usft)	Vertical Section (usft)	Dogleg Rate (°/100usft)	Build Rate (°/100usft)	Turn Rate (°/100usft)
4,668.0	7.90	331.80	4,602.8	641.3	-361.5	732.9	0.66	-0.63	-1.26
4,762.0	9.20	332.00	4,695.8	653.6	-368.1	746.8	1.38	1.38	0.21
4,857.0	8.80	331.20	4,789.6	666.7	-375.1	761.6	0.44	-0.42	-0.84
4,952.0	8.10	330.20	4,883.6	678.9	-382.0	775.5	0.75	-0.74	-1.05
5,046.0	9.80	332.90	4,976.4	691.8	-388.9	790.0	1.86	1.81	2.87
5,141.0	9.30	332.50	5,070.1	705.8	-396.1	805.6	0.53	-0.53	-0.42
5,235.0	8.70	332.80	5,162.9	718.8	-402.9	820.2	0.64	-0.64	0.32
5,330.0	8.30	333.20	5,256.9	731.3	-409.3	834.1	0.43	-0.42	0.42
5,425.0	9.90	330.60	5,350.7	744.6	-416.4	849.1	1.74	1.68	-2.74
5,519.0	9.60	330.30	5,443.3	758.4	-424.2	864.9	0.32	-0.32	-0.32
5,614.0	8.90	332.70	5,537.1	771.8	-431.5	880.1	0.84	-0.74	2.53
5,709.0	8.50	333.00	5,631.0	784.6	-438.1	894.3	0.42	-0.42	0.32
5,804.0	9.30	331.40	5,724.9	797.6	-444.9	908.9	0.88	0.84	-1.68
5,898.0	9.00	332.70	5,817.7	810.8	-451.9	923.8	0.39	-0.32	1.38
5,993.0	8.90	327.60	5,911.5	823.6	-459.3	938.5	0.84	-0.11	-5.37
6,088.0	8.50	325.40	6,005.4	835.6	-467.2	952.8	0.55	-0.42	-2.32
6,182.0	8.00	326.70	6,098.5	846.8	-474.7	966.3	0.57	-0.53	1.38
6,277.0	8.40	325.60	6,192.5	858.1	-482.3	979.9	0.45	0.42	-1.16
6,371.0	9.20	325.80	6,285.4	869.9	-490.4	994.2	0.85	0.85	0.21
6,466.0	9.20	323.40	6,379.2	882.3	-499.2	1,009.4	0.40	0.00	-2.53
6,561.0	7.90	320.50	6,473.1	893.4	-507.9	1,023.5	1.44	-1.37	-3.05
6,655.0	7.80	322.90	6,566.2	903.5	-515.8	1,036.3	0.36	-0.11	2.55
6,750.0	8.10	328.50	6,660.3	914.4	-523.2	1,049.5	0.87	0.32	5.89
6,844.0	8.00	330.10	6,753.4	925.7	-529.9	1,062.6	0.26	-0.11	1.70
6,939.0	7.70	330.20	6,847.5	936.9	-536.4	1,075.5	0.32	-0.32	0.11
7,033.0	7.30	329.10	6,940.7	947.5	-542.6	1,087.7	0.45	-0.43	-1.17
7,128.0	6.80	329.10	7,035.0	957.5	-548.6	1,099.4	0.53	-0.53	0.00
7,223.0	6.80	329.00	7,129.3	967.2	-554.4	1,110.6	0.01	0.00	-0.11
7,317.0	6.30	326.50	7,222.7	976.2	-560.1	1,121.3	0.61	-0.53	-2.66
7,412.0	6.10	326.60	7,317.1	984.8	-565.7	1,131.6	0.21	-0.21	0.11
7,506.0	4.20	334.40	7,410.7	992.1	-570.0	1,140.0	2.15	-2.02	8.30
7,601.0	1.80	331.00	7,505.6	996.5	-572.2	1,144.9	2.53	-2.53	-3.58
7,696.0	0.50	308.70	7,600.6	998.1	-573.2	1,146.8	1.42	-1.37	-23.47
7,790.0	0.50	301.60	7,694.6	998.6	-573.9	1,147.5	0.07	0.00	-7.55
7,885.0	0.40	307.10	7,789.6	999.0	-574.5	1,148.2	0.11	-0.11	5.79
7,980.0	0.40	12.60	7,884.6	999.5	-574.7	1,148.8	0.46	0.00	68.95
8,074.0	0.30	263.00	7,978.6	999.8	-574.9	1,149.1	0.61	-0.11	-116.60
8,169.0	0.30	54.30	8,073.6	999.9	-574.9	1,149.2	0.61	0.00	159.26
8,263.0	0.60	91.90	8,167.6	1,000.0	-574.2	1,148.9	0.43	0.32	40.00
8,358.0	0.80	128.10	8,262.6	999.6	-573.2	1,148.0	0.50	0.21	38.11
8,453.0	0.80	126.80	8,357.6	998.8	-572.2	1,146.7	0.02	0.00	-1.37
8,548.0	0.70	129.90	8,452.6	998.0	-571.2	1,145.6	0.11	-0.11	3.26
8,642.0	0.80	129.70	8,546.5	997.2	-570.2	1,144.4	0.11	0.11	-0.21

Company:	Caerus Oil & Gas	Local Co-ordinate Reference:	Well BJU B26 FED 11A-26 496 - Slot 11A-26
Project:	Garfield County, CO	TVD Reference:	RKB @ 8241.0usft (H&P #330)
Site:	BJU B26 496 Pad	MD Reference:	RKB @ 8241.0usft (H&P #330)
Well:	BJU B26 FED 11A-26 496	North Reference:	True
Wellbore:	Wellbore #1	Survey Calculation Method:	Minimum Curvature
Design:	Wellbore #1	Database:	EDM 5000.1 Single User Db

Survey										
Measured Depth (usft)	Inclination (°)	Azimuth (°)	Vertical Depth (usft)	+N/-S (usft)	+E/-W (usft)	Vertical Section (usft)	Dogleg Rate (°/100usft)	Build Rate (°/100usft)	Turn Rate (°/100usft)	
8,737.0	0.50	118.90	8,641.5	996.6	-569.4	1,143.4	0.34	-0.32	-11.37	
8,831.0	0.40	99.20	8,735.5	996.4	-568.7	1,142.8	0.19	-0.11	-20.96	
8,926.0	0.30	123.90	8,830.5	996.2	-568.2	1,142.3	0.19	-0.11	26.00	
9,021.0	0.20	191.40	8,925.5	995.9	-568.0	1,142.0	0.31	-0.11	71.05	
9,115.0	0.50	224.40	9,019.5	995.4	-568.3	1,141.8	0.37	0.32	35.11	
9,210.0	0.80	221.00	9,114.5	994.6	-569.0	1,141.5	0.32	0.32	-3.58	
9,304.0	0.90	232.50	9,208.5	993.7	-570.0	1,141.3	0.21	0.11	12.23	
9,399.0	0.90	227.70	9,303.5	992.7	-571.2	1,141.2	0.08	0.00	-5.05	
9,494.0	1.00	251.90	9,398.5	992.0	-572.5	1,141.3	0.43	0.11	25.47	
9,588.0	1.30	218.20	9,492.5	990.9	-574.0	1,141.3	0.77	0.32	-35.85	
9,683.0	1.30	212.10	9,587.4	989.1	-575.2	1,140.5	0.15	0.00	-6.42	
9,778.0	1.50	215.50	9,682.4	987.2	-576.5	1,139.7	0.23	0.21	3.58	
9,872.0	0.10	225.30	9,776.4	986.1	-577.3	1,139.2	1.49	-1.49	10.43	
9,966.0	0.50	36.40	9,870.4	986.4	-577.1	1,139.4	0.64	0.43	182.02	
10,061.0	0.10	300.80	9,965.4	986.8	-576.9	1,139.6	0.55	-0.42	-100.63	
10,156.0	0.60	256.70	10,060.4	986.7	-577.5	1,139.8	0.56	0.53	-46.42	
10,250.0	0.90	256.40	10,154.4	986.4	-578.7	1,140.3	0.32	0.32	-0.32	
10,345.0	1.20	245.40	10,249.4	985.8	-580.3	1,140.7	0.38	0.32	-11.58	
10,439.0	1.60	242.80	10,343.4	984.8	-582.4	1,141.1	0.43	0.43	-2.77	
10,534.0	1.70	241.40	10,438.3	983.5	-584.8	1,141.4	0.11	0.11	-1.47	
10,629.0	1.50	232.60	10,533.3	982.1	-587.0	1,141.5	0.33	-0.21	-9.26	
10,723.0	1.60	226.10	10,627.2	980.5	-588.9	1,141.2	0.22	0.11	-6.91	
10,818.0	1.80	226.70	10,722.2	978.5	-591.0	1,140.8	0.21	0.21	0.63	
10,913.0	2.00	224.90	10,817.1	976.3	-593.2	1,140.3	0.22	0.21	-1.89	
11,007.0	2.10	228.20	10,911.1	974.0	-595.7	1,139.8	0.16	0.11	3.51	
11,102.0	2.20	232.70	11,006.0	971.7	-598.4	1,139.5	0.21	0.11	4.74	
11,196.0	2.40	233.80	11,099.9	969.5	-601.4	1,139.4	0.22	0.21	1.17	
11,291.0	2.60	233.80	11,194.9	967.0	-604.8	1,139.3	0.21	0.21	0.00	
11,386.0	2.90	236.70	11,289.7	964.4	-608.5	1,139.3	0.35	0.32	3.05	
11,480.0	3.10	239.70	11,383.6	961.9	-612.7	1,139.5	0.27	0.21	3.19	
11,575.0	3.30	242.00	11,478.5	959.3	-617.3	1,140.0	0.25	0.21	2.42	
11,669.0	3.60	243.60	11,572.3	956.7	-622.4	1,140.8	0.34	0.32	1.70	
11,764.0	4.20	241.30	11,667.1	953.7	-628.1	1,141.6	0.65	0.63	-2.42	
11,858.0	4.70	240.10	11,760.8	950.1	-634.5	1,142.3	0.54	0.53	-1.28	
11,953.0	5.10	240.30	11,855.4	946.1	-641.5	1,143.0	0.42	0.42	0.21	
12,038.0	5.10	239.70	11,940.1	942.3	-648.0	1,143.6	0.06	0.00	-0.71	
TD @ 12098.0' MD / 11999.9' TVD										
12,098.0	5.10	239.70	11,999.9	939.6	-652.6	1,144.0	0.00	0.00	0.00	



Company:	Caerus Oil & Gas	Local Co-ordinate Reference:	Well BJU B26 FED 11A-26 496 - Slot 11A-26
Project:	Garfield County, CO	TVD Reference:	RKB @ 8241.0usft (H&P #330)
Site:	BJU B26 496 Pad	MD Reference:	RKB @ 8241.0usft (H&P #330)
Well:	BJU B26 FED 11A-26 496	North Reference:	True
Wellbore:	Wellbore #1	Survey Calculation Method:	Minimum Curvature
Design:	Wellbore #1	Database:	EDM 5000.1 Single User Db

Design Annotations					
Measured Depth (usft)	Vertical Depth (usft)	Local Coordinates			
		+N/-S (usft)	+E/-W (usft)	Comment	
120.0	120.0	-0.4	-0.3	Gyro Tie-in @ 120.0' MD / 120.0' TVD	
12,098.0	11,999.9	939.6	-652.6	TD @ 12098.0' MD / 11999.9' TVD	