

Inspection Photos

August 8, 2022

Operator: TEP Rocky Mountain LLC - #96850

Location ID: 436180

Location Name: Youberg /RU 42-7

Inspection Document #: 702800563

Garfield County, CO

SENE Section 7 T7S R93W

Anna O'Malley
Reclamation Specialist, COGCC



COLORADO

**Oil & Gas Conservation
Commission**

Department of Natural Resources

Inspection Photos
Location Name: Youberg /RU 42-7
Location ID: 436180



Photo 1. Photo taken from the Location entrance to the west shows an overview of the production area.



Photo 2. Photo taken from the Location entrance to the west shows an overview of the production area.

Inspection Photos
Location Name: Youberg /RU 42-7
Location ID: 436180



Photo 3. Photo taken from the Location entrance to the west shows an overview of the production area.



Photo 4. Photo taken from the south of the Location shows the cut slope is stabilized with perennial vegetation.

Inspection Photos
Location Name: Youberg /RU 42-7
Location ID: 436180



Photo 5. Photo taken from the north of the Location shows the eastern interim area. Interim areas are vegetated with bluebunch wheatgrass, western wheatgrass (native perennial grasses) and alfalfa (introduced perennial forb) which may or may not persist.



Photo 6. Photo taken from the south of the Location shows the southern interim area. Red circles indicate plumeless thistle (CO List B Noxious Weed).

Inspection Photos
Location Name: Youberg /RU 42-7
Location ID: 436180

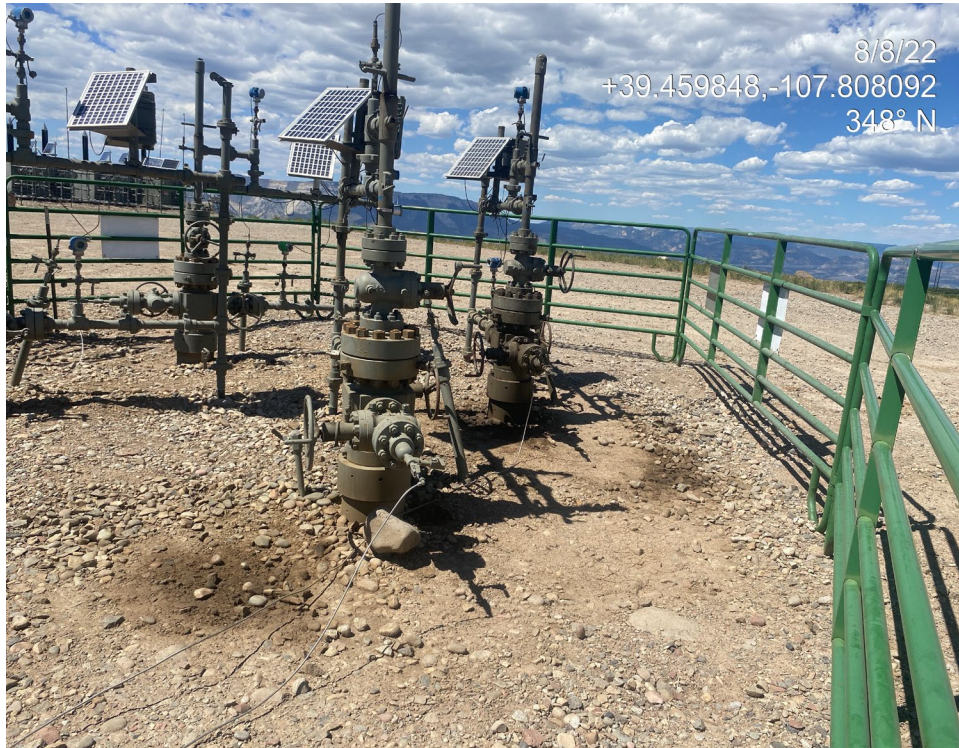


Photo 7. Photos taken from the well area shows stained soils around wellheads. Stained soils observed at the four easternmost wellheads.