



030305-S

PLAT NO.

ROBINSON SERVICES*Oil Field & Construction Staking*

P.O. Box 2324

Garden City, Kansas 67846

Office/Fax: (620) 276-6159

Cell: (620) 272-1499

5310

INVOICE NO.



Robinson Services of Garden City, Kansas has in accordance with a request from Al Gross for Pelican Hill Oil & Gas Company has determined the location of the "McKean #1-20" to be 330'FNL - 1545'FWL of Section 20, Township 12 South, Range 44 West of the 6th Principal Meridian, Cheyenne County, Colorado.



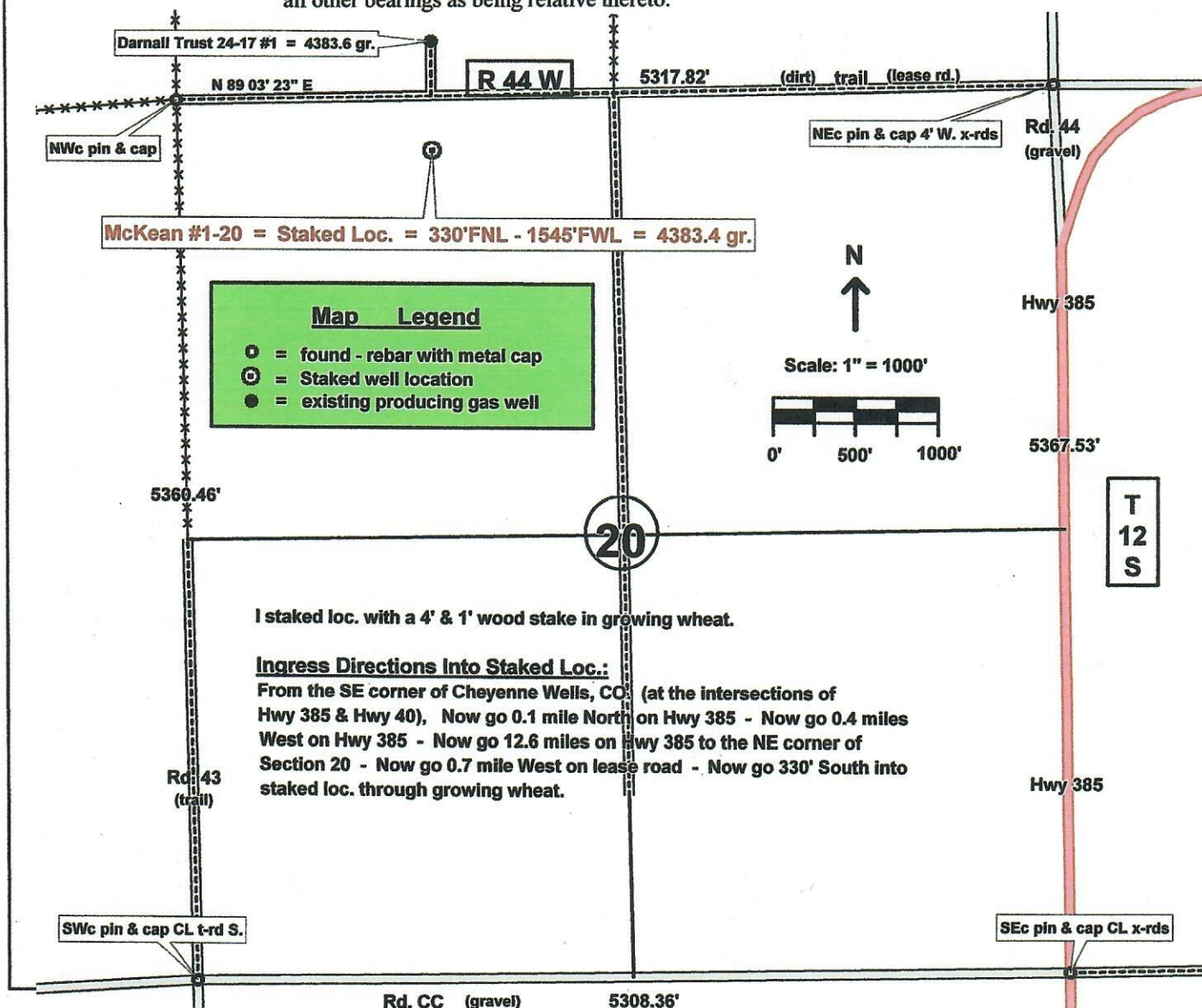
Date: 3/3/05

By: Burt West

Basis of Elevation Spot: From the topo elevation of 4395' at the SW corner of sec. 20-12s-44w

Notes: Location falls in dry land, growing wheat
There are NO improvements within 200 ft. of staked location
The ground elevation at staked location = 4383.4 gr.

Basis of Bearings: Bearings were determined based upon the West line of Section 20 as bearings North & South with all other bearings as being relative thereto.





ROBINSON SERVICES

Oil Field & Construction Staking

P.O. Box 2324

Garden City, Kansas 67846

Office/Fax: (620) 276-6159

Cell: (620) 272-1499

030305-S

Print Job

5310

INVOICE NO.

Robinson Services of Garden City, Kansas has in accordance with a request from Al Gross for Pelican Hill Oil & Gas Company has determined the location of the "McKean #1-20" to be 440FNL - 1505' FWL of Section 20, Township 12 South, Range 44 West of the 6th Principal Meridian, Cheyenne County, Colorado.

Date: 4-25-05

By: Burt West

Basis of Elevation Spot: From the topo elevation of 4395' at the SW corner of sec. 20-12s-44w

Notes: Location falls in dry land, growing wheat
There are NO improvements within 200 ft. of staked location
The ground elevation at staked location = 4383.1 gr.

I RESURVEYED LOC. ON 4-25-05
440FNL - 1505FWL
4383.1 gr ELEV. Burt West

Basis of Bearings: Bearings were determined based upon the West line of Section 20 as bearings North & South with all other bearings as being relative thereto.

