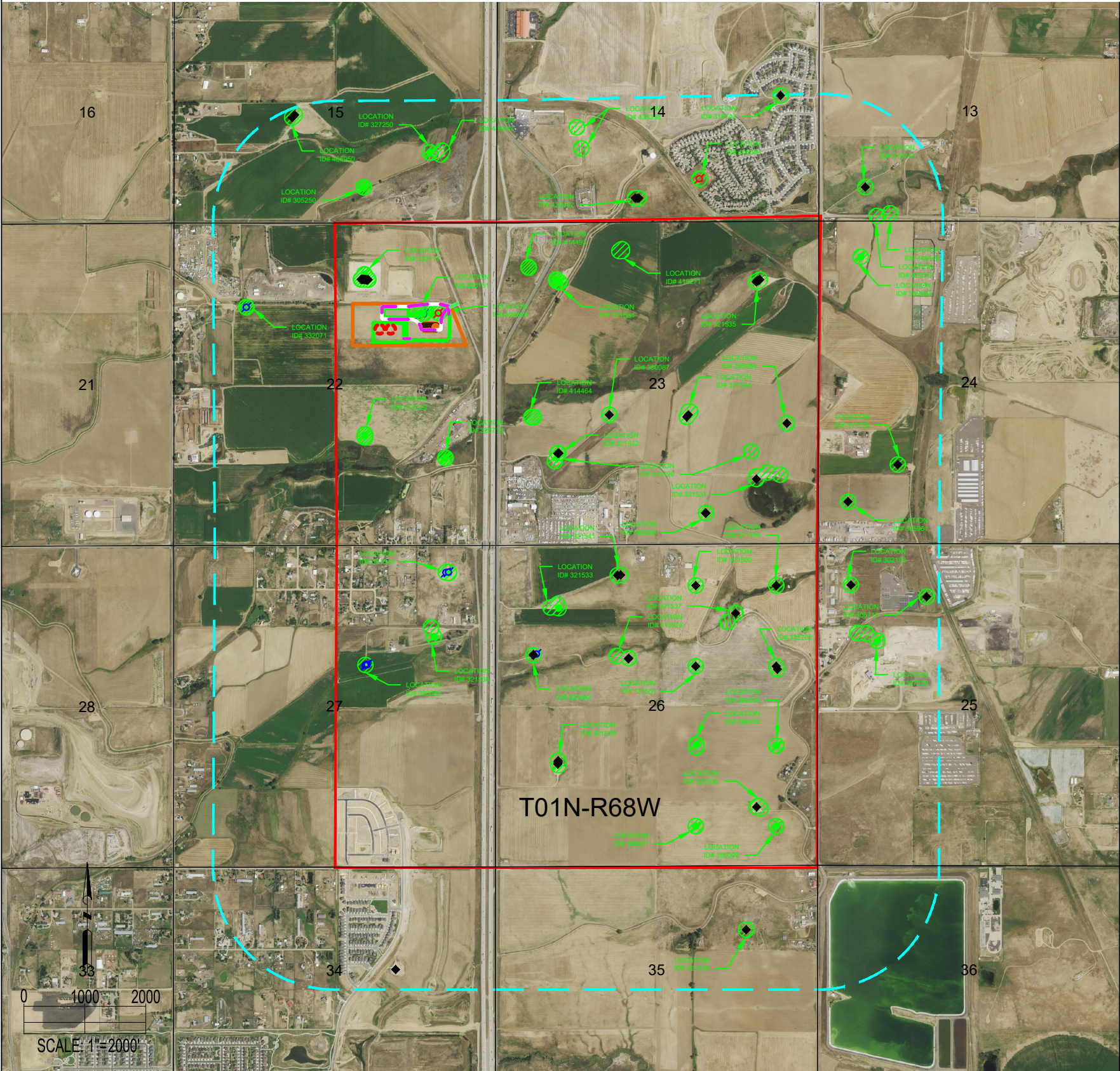


COSSLETT EAST 22H-H168 PAD
RELATED LOCATION & FLOWLINE MAP



DATA SOURCE:
AERIAL IMAGERY: NAIP 2019, ASCENT 06/2020
WELLS/APPROVED LOCATIONS: COGCC

PUBLICLY AVAILABLE DATA SOURCES HAVE NOT
BEEN INDEPENDENTLY VERIFIED BY ASCENT.

DISCLAIMER:
THIS PLOT DOES NOT REPRESENT A MONUMENTED LAND SURVEY AND SHOULD NOT BE RELIED UPON TO DETERMINE BOUNDARY LINES.
PROPERTY OWNERSHIP OR OTHER PROPERTY INTERESTS, PARCEL LINES, IF DEPICTED HAVE NOT BEEN FIELD VERIFIED AND MAY BE BASED
UPON PUBLICLY AVAILABLE DATA THAT ALSO HAS NOT BEEN INDEPENDENTLY VERIFIED.



FIELD
DATE:
07-24-19

DRAWN BY:
CSG

DRAWING
DATE:
08-19-21

CHECKED BY:
IJM

SITE NAME:
COSSLETT EAST 22H-H168 PAD

SURFACE LOCATION:
SE 1/4 NE 1/4 SEC. 22, T1N, R68W, 6TH P.M.
WELD COUNTY, COLORADO

LEGEND:

- PROPOSED WELL
- EXISTING WELL
- PLUGGED & ABANDONED WELL
- DRY & ABANDONED WELL

- EXISTING ACCESS ROAD
- PROPOSED ACCESS ROAD
- PERMITTED WELL
- TEMPORARILY ABANDONED WELL

- 2000' RADIUS FROM DSU
- PROPOSED MLVT
- OIL & GAS LOCATION
- DSU BOUNDARY

- PERMITTED COGCC LOCATION
- WORKING PAD SURFACE



COSSLETT EAST 22H-H168 PAD
RELATED LOCATION & FLOWLINE MAP

Location ID	Location Name	Location Status	Operator
332071	HULSTROM-6 1N68W/22SWNW	AC	KERR MCGEE OIL & GAS ONSHORE LP
305250	LOVELY-6 1N68W/15SWSE	CL	KERR MCGEE OIL & GAS ONSHORE LP
332117	COSSLETT 22H-B168	AC	CRESTONE PEAK RESOURCES OPERATING LLC
323151	COSSLETT B UNIT 6 1N68W 22SENE	AC	CRESTONE PEAK RESOURCES OPERATING LLC
408069	COSSLETT B UNIT-6 1N68W/22SENE	CL	VESSELS OIL & GAS COMPANY
414493	BURY 4-23	AC	KERR MCGEE OIL & GAS ONSHORE LP
321534	BURY CRANDELL NWNW MULTI-WELL PAD 22-23	CL	CRESTONE PEAK RESOURCES OPERATING LLC
414464	BOA 12-23	AC	KERR MCGEE OIL & GAS ONSHORE LP
326753	COSSLETT B UNIT 6 1N68W/22NESE	AC	CRESTONE PEAK RESOURCES OPERATING LLC
310129	COSSLETT 6 1N68W/22NWSE MULTI WELL	CL	CRESTONE PEAK RESOURCES OPERATING LLC
			ENCANA OIL & GAS (USA) INC
466950	CLELAND /11-15HZ PAD	AC	KERR MCGEE OIL & GAS ONSHORE LP
327250	LOVLEY-USX UU-61N68W /15SESE	CL	KERR MCGEE OIL & GAS ONSHORE LP
458247	LOVELY-61N68W /15SWSE	AC	KERR MCGEE OIL & GAS ONSHORE LP
438402	RANCHVIEW /3N-11HZ	AC	KERR MCGEE OIL & GAS ONSHORE LP
438398	RANCHVIEW TANK BATTERY /3N-11HZ	AC	KERR MCGEE OIL & GAS ONSHORE LP
318743	UPRR 43-PAN AM I-61N68W /14NESE	AC	KP KAUFFMAN COMPANY INC
406360	UPRR 43 PAN AM I-61N68W /14SWSE	CL	AMOCO PRODUCTION COMPANY
413271	Bury /28-23 (Crestone Peak Resources)	AL	ENCANA OIL & GAS (USA) INC
			KERR MCGEE OIL & GAS ONSHORE LP
318747	UPRR 43 PAN AM I-61N68W /13SWSW	AC	KP KAUFFMAN COMPANY INC
445146	UPRR 43 PAN AM N 1 O SA /34002591	AC	KERR MCGEE OIL & GAS ONSHORE LP
479247	UPRR 43 PAN AM I 26-31 /	AC	KP KAUFFMAN COMPANY INC
305959	JOHNSTON UU-61N68W /24NWNW	CL	KERR MCGEE OIL & GAS ONSHORE LP
380084	HELEN /43-23	AC	CRESTONE PEAK RESOURCES OPERATING LLC
321544	HELEN /4-6-23	AC	CRESTONE PEAK RESOURCES OPERATING LLC
			KERR MCGEE OIL & GAS ONSHORE LP
380087	HELEN /23-23	AC	CRESTONE PEAK RESOURCES OPERATING LLC
321535	BURY CRANDELL 61N68W/NENE /C UNIT #1 PAD	AC	CRESTONE PEAK RESOURCES OPERATING LLC
321532	HELEN E UNIT /168W/23NWSW	AC	CRESTONE PEAK RESOURCES OPERATING LLC
			KERR MCGEE OIL & GAS ONSHORE LP
413196	BURY CRANDELL /12-23	AC	CRESTONE PEAK RESOURCES OPERATING LLC

Location ID	Location Name	Location Status	Operator
321531	Helen /E1 Facilities	AC	CRESTONE PEAK RESOURCES OPERATING LLC
380086	HELEN /34-23	AC	KERR MCGEE OIL & GAS ONSHORE LP
			CRESTONE PEAK RESOURCES OPERATING LLC
321541	AL AUX /4-0-26	AC	CRESTONE PEAK RESOURCES OPERATING LLC
321533	AL AUX F UNIT-61N68W /26NWNW	AC	CRESTONE PEAK RESOURCES OPERATING LLC
413528	SEARS /4-4-26	AC	CRESTONE PEAK RESOURCES OPERATING LLC
321537	SHANNON ROBERTS-61N68W /26NWNE	AC	BLUE CHIP OIL INC
321499	SHANNON-ROBERTS-61N68W /26NENE	AC	NATURAL RESOURCE GROUP INC
335762	SHANNON-ROBERTS-61N68W /26SENE	AC	NATURAL RESOURCE GROUP INC
			BLUE CHIP OIL INC
306710	JOHNSTON-61N68W /25NENW	AC	KERR MCGEE OIL & GAS ONSHORE LP
302193	BROOKMAN-61N68W /25NWNW	AC	KERR MCGEE OIL & GAS ONSHORE LP
305961	JOHNSTON UU-61N68W /24SWSW	AC	KERR MCGEE OIL & GAS ONSHORE LP
317728	JOHNSTON-61N68W /24SWSW	AC	KERR MCGEE OIL & GAS ONSHORE LP
380006	GOLTL-61N68W /26NESE	CL	H & R WELL SERVICES, INC
380020	MANN-61N68W /26NWSE	CL	H & R WELL SERVICES, INC
			ENCANA OIL & GAS (USA) INC
321530	CRANDELL E UNIT /1N68W/26SESE	AC	CRESTONE PEAK RESOURCES OPERATING LLC
			ENCANA OIL & GAS (USA) INC
380009	GOLTL-61N68W /26SESE	CL	H & R WELL SERVICES, INC
380021	MANN-61N68W /26SWSE	CL	H & R WELL SERVICES, INC
321501	SHANNON-ROBERTS-61N68W /26SWNE	AC	NATURAL RESOURCE GROUP INC
321529	CRANDELL NWSW MULTI-WELL PAD /24-26	AC	CRESTONE PEAK RESOURCES OPERATING LLC
321542	AL AUX-61N68W MULTI-WELL PAD /26 SWNW	AC	CRESTONE PEAK RESOURCES OPERATING LLC
321543	STIPANOVICH /8-2-27	AC	CRESTONE PEAK RESOURCES OPERATING LLC
321538	BAKER C UNIT-61N68W /27SENE	AC	CRESTONE PEAK RESOURCES OPERATING LLC
380085	BAKER /32-27	AC	CRESTONE PEAK RESOURCES OPERATING LLC
321500	SHANNON-ROBERTS-61N68W /26NWNE	AC	NATURAL RESOURCE GROUP INC
327328	UPRR 43 PAN AM UNIT Y-61N68W /25SWNW	AC	KERR MCGEE OIL & GAS ONSHORE LP
321539	UPRR 43 PAN AM Z-61N68W /35NENE	AC	KERR MCGEE OIL & GAS ONSHORE LP