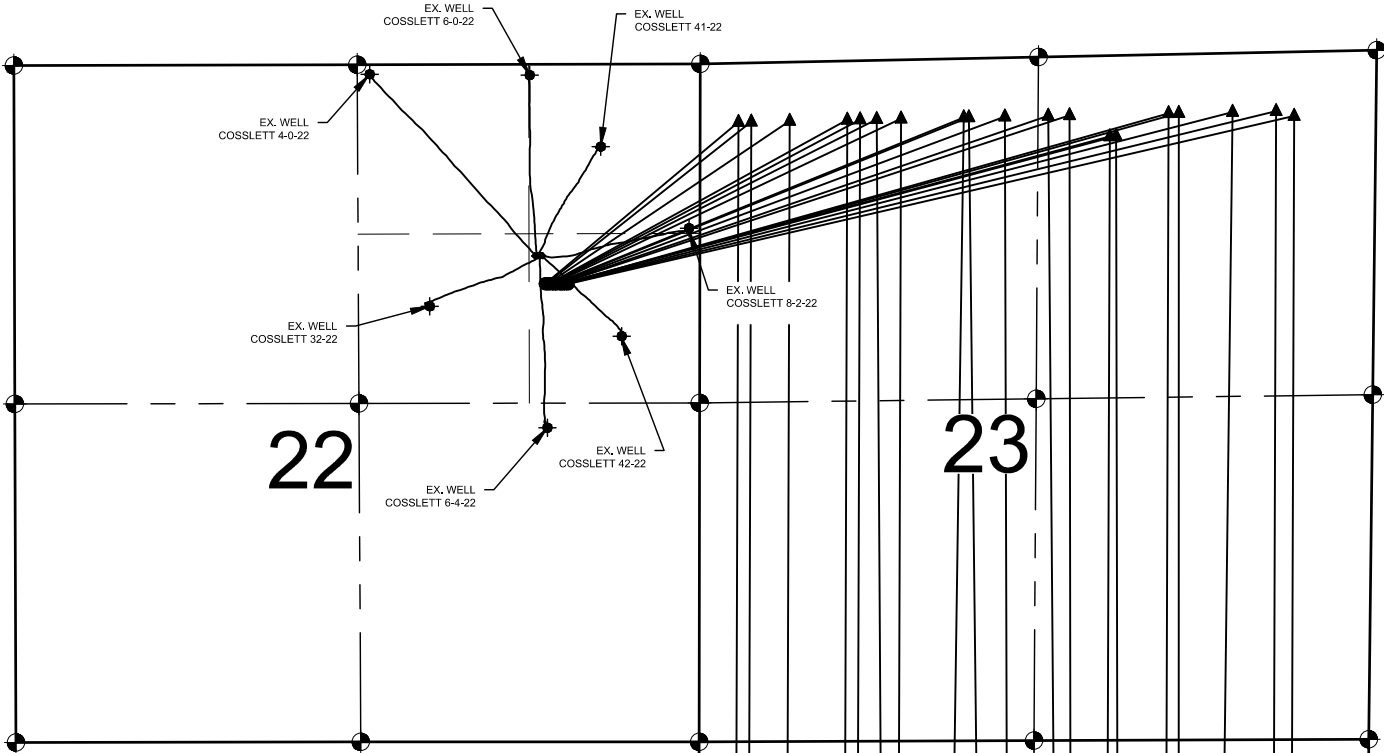


COSSLETT EAST 22H-H168 PAD
DIRECTIONAL WELL PLAT

NOTES:

1. THIS FIELD SURVEY CONFORMS TO THE MINIMUM STANDARDS SET BY THE COGCC, RULE NO. 215
2. ALL DISTANCES AND BEARINGS SHOWN HEREON ARE GROUND VALUES AS GPS MEASURED IN THE FIELD, WITH TIES TO WELLS MEASURED PERPENDICULAR TO LINES SHOWN HEREON. THIS LOW DISTORTION PROJECTION (LDP) IS BASED ON THE NORTH AMERICAN DATUM OF 1983, U.S. SURVEY FOOT WITH A LATITUDE ORIGIN OF 40.043908°N, A CENTRAL MERIDIAN LONGITUDE OF 104.999189°W, AND A SCALE FACTOR ON THE CENTRAL MERIDIAN OF 1.000243 (EXACT). THE LDP BASIS OF BEARINGS IS GEODETIC NORTH.
3. FIELD VERIFICATION OF MONUMENTS COMPLETED WITHIN 1 YEAR OF SIGNATURE DATE, UNLESS OTHERWISE NOTED.



COSSLETT EAST FED 1A-22H-H168
BHL: 460' FSL
300' FWL

COSSLETT EAST FED 1B-22H-H168
BHL: 460' FSL
400' FWL

COSSLETT EAST 1C-22H-H168
BHL: 460' FSL
700' FWL

COSSLETT EAST 1D-22H-H168
BHL: 460' FSL
1150' FWL

COSSLETT EAST 1E-22H-H168
BHL: 460' FSL
1250' FWL

COSSLETT EAST 1F-22H-H168
BHL: 460' FSL
1470' FWL

COSSLETT EAST 1G-22H-H168
BHL: 460' FSL
1570' FWL

COSSLETT EAST 1H-22H-H168
BHL: 460' FSL
1950' FWL

COSSLETT EAST 1I-22H-H168
BHL: 460' FSL
2243' FWL

COSSLETT EAST 1J-22H-H168
BHL: 460' FSL
2440' FWL

COSSLETT EAST 1K-22H-H168
BHL: 460' FSL
2426' FEL

COSSLETT EAST 1L-22H-H168
BHL: 460' FSL
2326' FEL

COSSLETT EAST 1M-22H-H168
BHL: 460' FSL
2056' FEL

COSSLETT EAST 1N-22H-H168
BHL: 460' FSL
1956' FEL

COSSLETT EAST 1O-22H-H168
BHL: 460' FSL
1596' FEL

COSSLETT EAST 1P-22H-H168
BHL: 460' FSL
1486' FEL

COSSLETT EAST 1Q-22H-H168
BHL: 460' FSL
1187' FEL

COSSLETT EAST 1R-22H-H168
BHL: 460' FSL
756' FEL

COSSLETT EAST 1S-22H-H168
BHL: 460' FSL
616' FEL

NOTES:

- COSSLETT EAST FED 1A-22H-H168 TO BE AT 1715' FNL & 1209' FEL.
BOTTOM HOLE AT 460' FSL & 300' FWL, SEC. 26.
- COSSLETT EAST FED 1B-22H-H168 TO BE AT 1715' FNL & 1198' FEL.
BOTTOM HOLE AT 460' FSL & 400' FWL, SEC. 26.
- COSSLETT EAST 1C-22H-H168 TO BE AT 1715' FNL & 1188' FEL.
BOTTOM HOLE AT 460' FSL & 700' FWL, SEC. 26.
- COSSLETT EAST 1D-22H-H168 TO BE AT 1715' FNL & 1178' FEL.
BOTTOM HOLE AT 460' FSL & 1150' FWL, SEC. 26.
- COSSLETT EAST 1E-22H-H168 TO BE AT 1715' FNL & 1168' FEL.
BOTTOM HOLE AT 460' FSL & 1250' FWL, SEC. 26.
- COSSLETT EAST 1F-22H-H168 TO BE AT 1715' FNL & 1158' FEL.
BOTTOM HOLE AT 460' FSL & 1470' FWL, SEC. 26.
- COSSLETT EAST 1G-22H-H168 TO BE AT 1715' FNL & 1148' FEL.
BOTTOM HOLE AT 460' FSL & 1570' FWL, SEC. 26.
- COSSLETT EAST 1H-22H-H168 TO BE AT 1715' FNL & 1138' FEL.
BOTTOM HOLE AT 460' FSL & 1950' FWL, SEC. 26.
- COSSLETT EAST 1I-22H-H168 TO BE AT 1715' FNL & 1128' FEL.
BOTTOM HOLE AT 460' FSL & 2243' FWL, SEC. 26.
- COSSLETT EAST 1J-22H-H168 TO BE AT 1715' FNL & 1118' FEL.
BOTTOM HOLE AT 460' FSL & 2440' FWL, SEC. 26.
- COSSLETT EAST 1K-22H-H168 TO BE AT 1715' FNL & 1108' FEL.
BOTTOM HOLE AT 460' FSL & 2426' FEL, SEC. 26.
- COSSLETT EAST 1L-22H-H168 TO BE AT 1716' FNL & 1098' FEL.
BOTTOM HOLE AT 460' FSL & 2326' FEL, SEC. 26.
- COSSLETT EAST 1M-22H-H168 TO BE AT 1716' FNL & 1088' FEL.
BOTTOM HOLE AT 460' FSL & 2056' FEL, SEC. 26.
- COSSLETT EAST 1N-22H-H168 TO BE AT 1716' FNL & 1078' FEL.
BOTTOM HOLE AT 460' FSL & 1956' FEL, SEC. 26.
- COSSLETT EAST 1O-22H-H168 TO BE AT 1716' FNL & 1068' FEL.
BOTTOM HOLE AT 460' FSL & 1596' FEL, SEC. 26.
- COSSLETT EAST 1P-22H-H168 TO BE AT 1716' FNL & 1058' FEL.
BOTTOM HOLE AT 460' FSL & 1486' FEL, SEC. 26.
- COSSLETT EAST 1Q-22H-H168 TO BE AT 1716' FNL & 1048' FEL.
BOTTOM HOLE AT 460' FSL & 1187' FEL, SEC. 26.
- COSSLETT EAST 1R-22H-H168 TO BE AT 1716' FNL & 1038' FEL.
BOTTOM HOLE AT 460' FSL & 756' FEL, SEC. 26.
- COSSLETT EAST 1S-22H-H168 TO BE AT 1716' FNL & 1028' FEL.
BOTTOM HOLE AT 460' FSL & 616' FEL, SEC. 26.

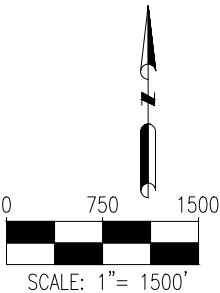
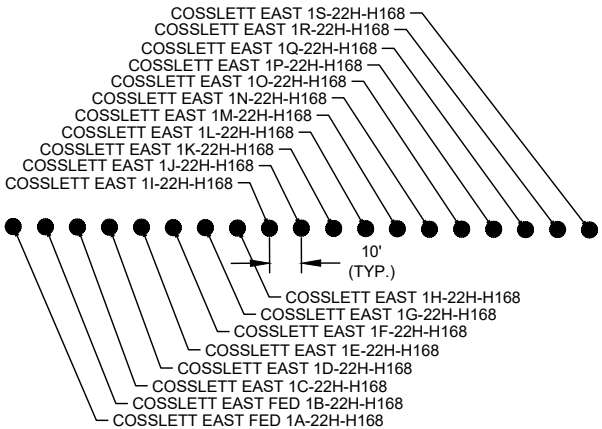
EXISTING WELLS (TEMPORARILY ABANDONED):

- COSSLETT 8-2-22 IS AT 1497' FNL & 1228' FEL.
- COSSLETT 41-22 IS AT 1497' FNL & 1271' FEL.

EXISTING WELLS (PLUGGED & ABANDONED):

- COSSLETT 42-22 IS AT 1494' FNL & 1238' FEL.
- COSSLETT 6-4-22 IS AT 1497' FNL & 1248' FEL.
- COSSLETT 32-22 IS AT 1497' FNL & 1257' FEL.
- COSSLETT 6-0-22 IS AT 1497' FNL & 1271' FEL.
- COSSLETT 4-0-22 IS AT 1497' FNL & 1290' FEL.

WELL DETAILS - 1" = 60'



LEGEND

- = EXISTING MONUMENT ▲ = TPZ
- = CALCULATED POSITION ◆ = EXISTING WELL
- = PROPOSED WELL BHL = BOTTOM HOLE
- ✦ = BOTTOM HOLE



8620 Wolff Court
Westminster, CO 80031
(303) 928-7128
www.ascentgeomatics.com

FIELD DATE:
07-24-19

DRAWING DATE:
08-18-21

BY:
CSG

CHECKED:
IJM

WELL NAME:
COSSLETT EAST 22H-H168 PAD

SURFACE LOCATION:
SE 1/4 NE 1/4 SEC. 22, T1N, R68W, 6TH P.M.
WELD COUNTY, COLORADO

PREPARED FOR:

