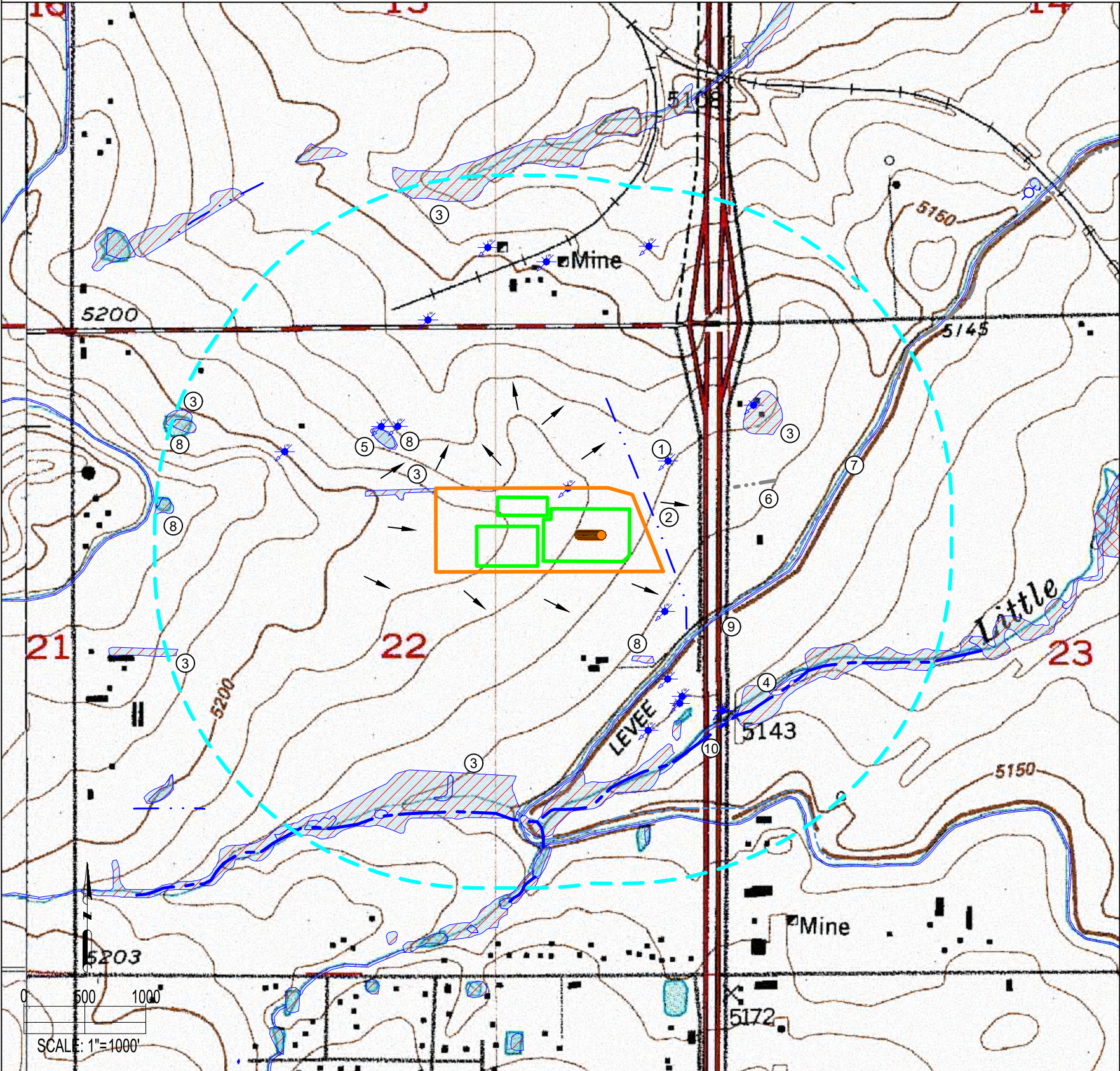


COSSLETT EAST 22H-H168 PAD
HYDROLOGY MAP



IMPROVEMENTS: (AS MEASURED FROM THE PROPOSED WORKING PAD SURFACE)	
1. WATER WELL:	±505' NE, ±1326' NE, ±1562' NW, ±1689' NW, ±1118' NW, ±1005' NW, ±1933' N, ±168' N (NOT IN THIS LOCATION PER FIELD VERIFICATION), ±2049' N, ±2162' N, ±1469' SE, ±1206' SE, ±1252' SE, ±533' SE, ±1030' SE, ±1399' S
2. DITCH:	±161' NE, ±2324' SE
3. FRESHWATER EMERGENT WETLAND (MAPPED GIS):	±446' NW, ±2544' SW, ±2443' N, ±1149' NE, ±1701' S, ±1438' SE, ±2492' NW
4. STREAM:	±1544' SE, ±2097' S
5. POND:	±936' NW, ±2308' S
6. CONCRETE DITCH:	±880' NE, ±2419' NE
7. CANAL:	±836' SE
8. FRESHWATER POND WETLAND (MAPPED GIS):	±778' S, ±919' NW, ±2439' NW, ±2489' W
9. SEASONAL STREAMBED WETLAND (MAPPED GIS):	±840' SE
10. PERENNIAL CHANNEL/DITCH WETLAND (MAPPED GIS):	±1525' SE

THERE ARE NO PUBLIC WATER SYSTEMS FACILITIES OR RULE 411 BUFFER ZONES WITHIN THE 2,640' RADIUS

NEAREST WATER WELL INFO: (AS MEASURED FROM THE NEAREST EDGE OF THE PROPOSED WORKING PAD SURFACE)			
PERMIT #	RECEIPT #	STATIC WATER LEVEL	DISTANCE/DIRECTION
19786-MH	0019786	N/A	±168' N
170198	0348732C	17'	±1005' NW

NEAREST SURFACE WATER FEATURE: (AS MEASURED FROM THE NEAREST EDGE OF THE PROPOSED WORKING PAD SURFACE)	
SURFACE WATER (DITCH)	±161' NE

PUBLIC WATER SYSTEM INFO: (AS MEASURED FROM THE NEAREST EDGE OF THE PROPOSED WORKING PAD SURFACE)			
PUBLIC WATER SYTEM	DISTANCE	OWNER	ADDRESS
WATER TOWER	±4158' NE	CENTRAL WELD COUNTY WATER DISTRICT	2235 2ND AVE GREELEY, CO 806317203

DISCLAIMER:
THIS PLOT DOES NOT REPRESENT A MONUMENTED LAND SURVEY AND SHOULD NOT BE RELIED UPON TO DETERMINE BOUNDARY LINES, PROPERTY OWNERSHIP OR OTHER PROPERTY INTERESTS. PARCEL LINES, IF DEPICTED HAVE NOT BEEN FIELD VERIFIED AND MAY BE BASED UPON PUBLICLY AVAILABLE DATA THAT ALSO HAS NOT BEEN INDEPENDENTLY VERIFIED.

- LEGEND:
- = PROPOSED WELL
 - ★ = WATER WELL
 - = FLOW DIRECTION
 - ⊗ = WATER TOWER

- = CANAL
- .-.- = CONCRETE DITCH
- .-.- = DITCH
- = STREAM

- = 2640' RADIUS FROM WPS
- = WETLAND
- = POND
- = OIL & GAS LOCATION
- = WORKING PAD SURFACE



FIELD DATE:
07-24-19

DRAWN BY:
CSG

DRAWING DATE:
05-13-21

CHECKED BY:
IJM

SITE NAME:
COSSLETT EAST 22H-H168 PAD

SURFACE LOCATION:
SE 1/4 NE 1/4 SEC. 22, T1N, R68W, 6TH P.M.
WELD COUNTY, COLORADO

DATA SOURCE:
TOPO MAP: USGS
WATER WELLS: COLORADO DWR
NHD: USGS

PUBLICLY AVAILABLE DATA SOURCES HAVE NOT BEEN INDEPENDENTLY VERIFIED BY ASCENT.