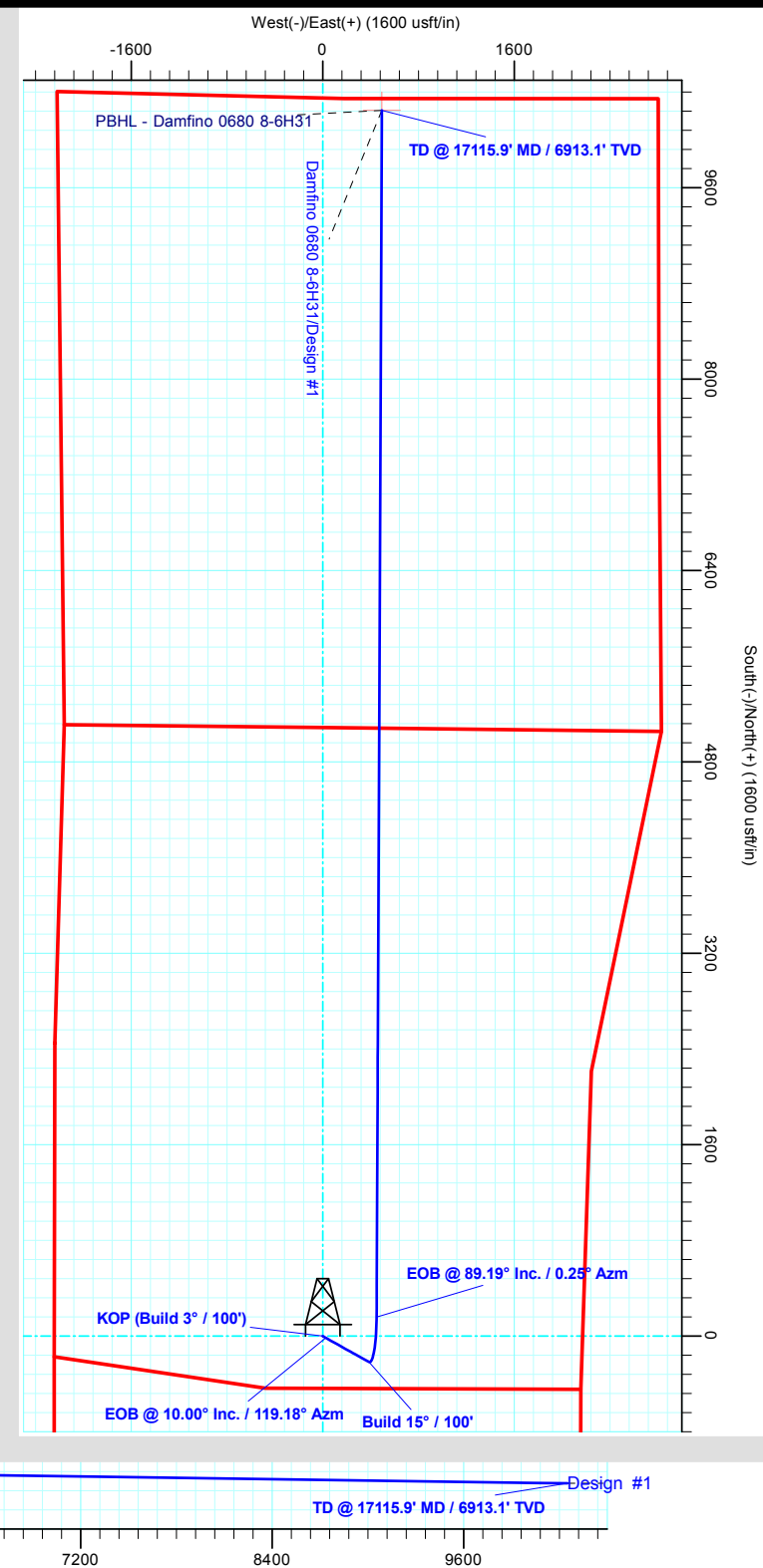
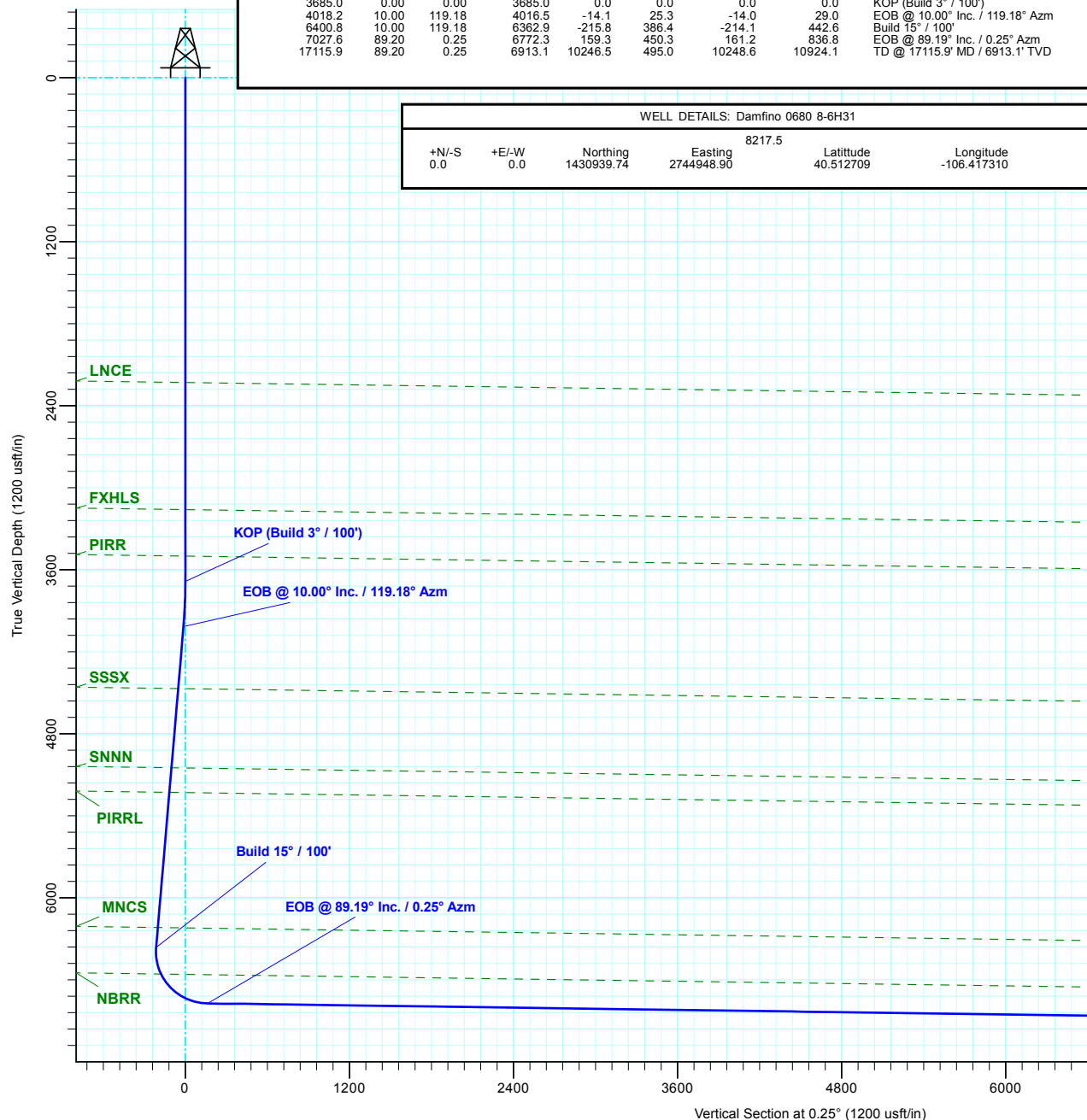




D90 Energy, LLC
Jackson County, Colorado
Sec 6, T6N, R80W, 6th PM
Damfino 0680 8-6H31
Design #1
Cylcone #33

ANNOTATIONS								
MD	Inc	Azi	TVD	+N/-S	+E/-W	Vsect	Departure	Annotation
3685.0	0.00	0.00	3685.0	0.0	0.0	0.0	0.0	KOP (Build 3° / 100')
4018.2	10.00	119.18	4016.5	-14.1	25.3	-14.0	29.0	EOB @ 10.00° Inc. / 119.18° Azm
6400.8	10.00	119.18	6362.9	-215.8	386.4	-214.1	442.6	Build 15° / 100'
7027.6	89.20	0.25	6772.3	159.3	450.3	161.2	836.8	EOB @ 89.19° Inc. / 0.25° Azm
17115.9	89.20	0.25	6913.1	10246.5	495.0	10248.6	10924.1	TD @ 17115.9' MD / 6913.1' TVD

WELL DETAILS: Damfino 0680 8-6H31						
8217.5						
+N/-S	+E/-W	Northing	Easting	Latitude	Longitude	
0.0	0.0	1430939.74	2744948.90	40.512709	-106.417310	





D90 ENERGY LLC

D90 Energy, LLC

**Jackson County, Colorado
Sec 6, T6N, R80W, 6th PM
Damfino 0680 8-6H31**

Wellbore #1

Plan: Design #1

KLX Well Planning Report

26 April, 2021





KLX
Well Planning Report



Database:	EDM 5000.1 Single User Db	Local Co-ordinate Reference:	Well Damfino 0680 8-6H31
Company:	D90 Energy, LLC	TVD Reference:	RKB @ 8243.5usft (Cylcone #33)
Project:	Jackson County, Colorado	MD Reference:	RKB @ 8243.5usft (Cylcone #33)
Site:	Sec 6, T6N, R80W, 6th PM	North Reference:	True
Well:	Damfino 0680 8-6H31	Survey Calculation Method:	Minimum Curvature
Wellbore:	Wellbore #1		
Design:	Design #1		

Project	Jackson County, Colorado		
Map System:	US State Plane 1983	System Datum:	Mean Sea Level
Geo Datum:	North American Datum 1983		
Map Zone:	Colorado Northern Zone		

Site	Sec 6, T6N, R80W, 6th PM		
Site Position:		Northing:	1,430,957.42 usft
From:	Map	Easting:	2,744,958.23 usft
Position Uncertainty:	0.0 usft	Slot Radius:	13-3/16 "
		Latitude:	40.512758
		Longitude:	-106.417278
		Grid Convergence:	-0.59 °

Well	Damfino 0680 8-6H31		
Well Position	+N/-S	-17.8 usft	Northing: 1,430,939.74 usft
	+E/-W	-9.1 usft	Easting: 2,744,948.90 usft
Position Uncertainty	0.0 usft	Wellhead Elevation:	Latitude: 40.512709
			Longitude: -106.417311
			Ground Level: 8,217.5 usft

Wellbore	Wellbore #1				
Magnetics	Model Name	Sample Date	Declination (°)	Dip Angle (°)	Field Strength (nT)
	IGRF2015	9/27/2018	8.94	66.65	52,096.30802748

Design	Design #1			
Audit Notes:				
Version:	Phase:	PLAN	Tie On Depth:	0.0
Vertical Section:	Depth From (TVD) (usft)	+N/-S (usft)	+E/-W (usft)	Direction (°)
	0.0	0.0	0.0	0.25

Plan Sections										
Measured Depth (usft)	Inclination (°)	Azimuth (°)	Vertical Depth (usft)	+N/-S (usft)	+E/-W (usft)	Dogleg Rate (°/100usft)	Build Rate (°/100usft)	Turn Rate (°/100usft)	TFO (°)	Target
0.0	0.00	0.00	0.0	0.0	0.0	0.00	0.00	0.00	0.00	
3,685.0	0.00	0.00	3,685.0	0.0	0.0	0.00	0.00	0.00	0.00	
4,018.2	10.00	119.18	4,016.5	-14.1	25.3	3.00	3.00	0.00	119.18	
6,400.8	10.00	119.18	6,362.9	-215.8	386.4	0.00	0.00	0.00	0.00	
7,027.6	89.20	0.25	6,772.3	159.3	450.3	15.00	12.64	-18.97	-118.68	
17,115.9	89.20	0.25	6,913.1	10,246.5	495.0	0.00	0.00	0.00	0.00	PBHL - Damfino 06

Database: EDM 5000.1 Single User Db
Company: D90 Energy, LLC
Project: Jackson County, Colorado
Site: Sec 6, T6N, R80W, 6th PM
Well: Damfino 0680 8-6H31
Wellbore: Wellbore #1
Design: Design #1

Local Co-ordinate Reference:
TVD Reference:
MD Reference:
North Reference:
Survey Calculation Method:

Well Damfino 0680 8-6H31
 RKB @ 8243.5usft (Cylcone #33)
 RKB @ 8243.5usft (Cylcone #33)
 True
 Minimum Curvature

Planned Survey

Measured Depth (usft)	Inclination (°)	Azimuth (°)	Vertical Depth (usft)	+N/-S (usft)	+E/-W (usft)	Vertical Section (usft)	Dogleg Rate (°/100usft)	Build Rate (°/100usft)	Turn Rate (°/100usft)
0.0	0.00	0.00	0.0	0.0	0.0	0.0	0.00	0.00	0.00
100.0	0.00	0.00	100.0	0.0	0.0	0.0	0.00	0.00	0.00
200.0	0.00	0.00	200.0	0.0	0.0	0.0	0.00	0.00	0.00
300.0	0.00	0.00	300.0	0.0	0.0	0.0	0.00	0.00	0.00
400.0	0.00	0.00	400.0	0.0	0.0	0.0	0.00	0.00	0.00
500.0	0.00	0.00	500.0	0.0	0.0	0.0	0.00	0.00	0.00
600.0	0.00	0.00	600.0	0.0	0.0	0.0	0.00	0.00	0.00
700.0	0.00	0.00	700.0	0.0	0.0	0.0	0.00	0.00	0.00
800.0	0.00	0.00	800.0	0.0	0.0	0.0	0.00	0.00	0.00
900.0	0.00	0.00	900.0	0.0	0.0	0.0	0.00	0.00	0.00
1,000.0	0.00	0.00	1,000.0	0.0	0.0	0.0	0.00	0.00	0.00
1,100.0	0.00	0.00	1,100.0	0.0	0.0	0.0	0.00	0.00	0.00
1,200.0	0.00	0.00	1,200.0	0.0	0.0	0.0	0.00	0.00	0.00
1,300.0	0.00	0.00	1,300.0	0.0	0.0	0.0	0.00	0.00	0.00
1,400.0	0.00	0.00	1,400.0	0.0	0.0	0.0	0.00	0.00	0.00
1,500.0	0.00	0.00	1,500.0	0.0	0.0	0.0	0.00	0.00	0.00
1,600.0	0.00	0.00	1,600.0	0.0	0.0	0.0	0.00	0.00	0.00
1,700.0	0.00	0.00	1,700.0	0.0	0.0	0.0	0.00	0.00	0.00
1,800.0	0.00	0.00	1,800.0	0.0	0.0	0.0	0.00	0.00	0.00
1,900.0	0.00	0.00	1,900.0	0.0	0.0	0.0	0.00	0.00	0.00
2,000.0	0.00	0.00	2,000.0	0.0	0.0	0.0	0.00	0.00	0.00
2,100.0	0.00	0.00	2,100.0	0.0	0.0	0.0	0.00	0.00	0.00
2,200.0	0.00	0.00	2,200.0	0.0	0.0	0.0	0.00	0.00	0.00
LNCE									
2,230.0	0.00	0.00	2,230.0	0.0	0.0	0.0	0.00	0.00	0.00
2,300.0	0.00	0.00	2,300.0	0.0	0.0	0.0	0.00	0.00	0.00
2,400.0	0.00	0.00	2,400.0	0.0	0.0	0.0	0.00	0.00	0.00
2,500.0	0.00	0.00	2,500.0	0.0	0.0	0.0	0.00	0.00	0.00
2,600.0	0.00	0.00	2,600.0	0.0	0.0	0.0	0.00	0.00	0.00
2,700.0	0.00	0.00	2,700.0	0.0	0.0	0.0	0.00	0.00	0.00
2,800.0	0.00	0.00	2,800.0	0.0	0.0	0.0	0.00	0.00	0.00
2,900.0	0.00	0.00	2,900.0	0.0	0.0	0.0	0.00	0.00	0.00
3,000.0	0.00	0.00	3,000.0	0.0	0.0	0.0	0.00	0.00	0.00
3,100.0	0.00	0.00	3,100.0	0.0	0.0	0.0	0.00	0.00	0.00
FXHLS									
3,160.0	0.00	0.00	3,160.0	0.0	0.0	0.0	0.00	0.00	0.00
3,200.0	0.00	0.00	3,200.0	0.0	0.0	0.0	0.00	0.00	0.00
3,300.0	0.00	0.00	3,300.0	0.0	0.0	0.0	0.00	0.00	0.00
3,400.0	0.00	0.00	3,400.0	0.0	0.0	0.0	0.00	0.00	0.00
PIRR									
3,500.0	0.00	0.00	3,500.0	0.0	0.0	0.0	0.00	0.00	0.00
3,600.0	0.00	0.00	3,600.0	0.0	0.0	0.0	0.00	0.00	0.00
KOP (Build 3° / 100')									
3,685.0	0.00	0.00	3,685.0	0.0	0.0	0.0	0.00	0.00	0.00
3,700.0	0.45	119.18	3,700.0	0.0	0.1	0.0	3.00	3.00	0.00
3,800.0	3.45	119.18	3,799.9	-1.7	3.0	-1.7	3.00	3.00	0.00
3,900.0	6.45	119.18	3,899.5	-5.9	10.6	-5.8	3.00	3.00	0.00
4,000.0	9.45	119.18	3,998.6	-12.6	22.6	-12.5	3.00	3.00	0.00
EOB @ 10.00° Inc. / 119.18° Azm									
4,018.2	10.00	119.18	4,016.5	-14.1	25.3	-14.0	3.00	3.00	0.00
4,100.0	10.00	119.18	4,097.1	-21.1	37.7	-20.9	0.00	0.00	0.00
4,200.0	10.00	119.18	4,195.6	-29.5	52.9	-29.3	0.00	0.00	0.00
4,300.0	10.00	119.18	4,294.0	-38.0	68.0	-37.7	0.00	0.00	0.00
4,400.0	10.00	119.18	4,392.5	-46.5	83.2	-46.1	0.00	0.00	0.00

Database: EDM 5000.1 Single User Db
Company: D90 Energy, LLC
Project: Jackson County, Colorado
Site: Sec 6, T6N, R80W, 6th PM
Well: Damfino 0680 8-6H31
Wellbore: Wellbore #1
Design: Design #1

Local Co-ordinate Reference:
TVD Reference:
MD Reference:
North Reference:
Survey Calculation Method:

Well Damfino 0680 8-6H31
 RKB @ 8243.5usft (Cylcone #33)
 RKB @ 8243.5usft (Cylcone #33)
 True
 Minimum Curvature

Planned Survey

Measured Depth (usft)	Inclination (°)	Azimuth (°)	Vertical Depth (usft)	+N/-S (usft)	+E/-W (usft)	Vertical Section (usft)	Dogleg Rate (°/100usft)	Build Rate (°/100usft)	Turn Rate (°/100usft)
SSSX									
4,477.9	10.00	119.18	4,469.3	-53.0	95.0	-52.6	0.00	0.00	0.00
4,500.0	10.00	119.18	4,491.0	-54.9	98.3	-54.5	0.00	0.00	0.00
4,600.0	10.00	119.18	4,589.5	-63.4	113.5	-62.9	0.00	0.00	0.00
4,700.0	10.00	119.18	4,688.0	-71.8	128.6	-71.3	0.00	0.00	0.00
4,800.0	10.00	119.18	4,786.4	-80.3	143.8	-79.7	0.00	0.00	0.00
4,900.0	10.00	119.18	4,884.9	-88.8	158.9	-88.1	0.00	0.00	0.00
5,000.0	10.00	119.18	4,983.4	-97.2	174.1	-96.5	0.00	0.00	0.00
SNNN									
5,066.2	10.00	119.18	5,048.6	-102.8	184.1	-102.0	0.00	0.00	0.00
5,100.0	10.00	119.18	5,081.9	-105.7	189.3	-104.9	0.00	0.00	0.00
5,200.0	10.00	119.18	5,180.4	-114.2	204.4	-113.3	0.00	0.00	0.00
PIRRL									
5,248.7	10.00	119.18	5,228.4	-118.3	211.8	-117.4	0.00	0.00	0.00
5,300.0	10.00	119.18	5,278.9	-122.6	219.6	-121.7	0.00	0.00	0.00
5,400.0	10.00	119.18	5,377.3	-131.1	234.7	-130.1	0.00	0.00	0.00
5,500.0	10.00	119.18	5,475.8	-139.6	249.9	-138.5	0.00	0.00	0.00
5,600.0	10.00	119.18	5,574.3	-148.0	265.0	-146.9	0.00	0.00	0.00
5,700.0	10.00	119.18	5,672.8	-156.5	280.2	-155.3	0.00	0.00	0.00
5,800.0	10.00	119.18	5,771.3	-164.9	295.3	-163.7	0.00	0.00	0.00
5,900.0	10.00	119.18	5,869.7	-173.4	310.5	-172.1	0.00	0.00	0.00
6,000.0	10.00	119.18	5,968.2	-181.9	325.6	-180.5	0.00	0.00	0.00
6,100.0	10.00	119.18	6,066.7	-190.3	340.8	-188.9	0.00	0.00	0.00
6,200.0	10.00	119.18	6,165.2	-198.8	355.9	-197.2	0.00	0.00	0.00
MNCS									
6,252.8	10.00	119.18	6,217.2	-203.3	363.9	-201.7	0.00	0.00	0.00
6,300.0	10.00	119.18	6,263.7	-207.3	371.1	-205.6	0.00	0.00	0.00
Build 15° / 100'									
6,400.8	10.00	119.18	6,362.9	-215.8	386.4	-214.1	0.00	0.00	0.00
6,425.0	8.84	98.00	6,386.8	-217.1	390.1	-215.4	15.00	-4.77	-87.54
6,450.0	9.12	73.87	6,411.5	-216.8	393.9	-215.1	15.00	1.11	-96.55
6,475.0	10.77	54.22	6,436.2	-214.9	397.7	-213.1	15.00	6.61	-78.60
6,500.0	13.30	40.82	6,460.6	-211.3	401.4	-209.6	15.00	10.10	-53.59
6,525.0	16.29	31.94	6,484.8	-206.2	405.2	-204.4	15.00	11.99	-35.51
6,550.0	19.55	25.85	6,508.6	-199.4	408.9	-197.7	15.00	13.01	-24.36
6,575.0	22.95	21.47	6,531.9	-191.1	412.5	-189.3	15.00	13.60	-17.51
6,600.0	26.44	18.18	6,554.6	-181.3	416.0	-179.5	15.00	13.96	-13.16
NBRR									
6,603.3	26.90	17.81	6,557.5	-179.9	416.4	-178.1	15.00	14.11	-11.34
6,625.0	29.99	15.62	6,576.6	-170.0	419.4	-168.2	15.00	14.21	-10.10
6,650.0	33.58	13.55	6,597.9	-157.3	422.7	-155.4	15.00	14.36	-8.26
6,675.0	37.19	11.84	6,618.2	-143.1	425.9	-141.3	15.00	14.47	-6.83
6,700.0	40.83	10.40	6,637.7	-127.7	428.9	-125.8	15.00	14.55	-5.78
6,725.0	44.49	9.16	6,656.0	-111.0	431.8	-109.1	15.00	14.62	-4.98
6,750.0	48.15	8.06	6,673.3	-93.1	434.5	-91.2	15.00	14.66	-4.37
6,775.0	51.83	7.09	6,689.4	-74.2	437.0	-72.3	15.00	14.70	-3.90
6,800.0	55.51	6.21	6,704.2	-54.2	439.3	-52.2	15.00	14.73	-3.52
6,825.0	59.20	5.40	6,717.7	-33.2	441.4	-31.3	15.00	14.75	-3.22
6,850.0	62.89	4.65	6,729.8	-11.4	443.4	-9.5	15.00	14.77	-2.99
6,875.0	66.59	3.96	6,740.4	11.1	445.1	13.1	15.00	14.79	-2.79
6,900.0	70.29	3.30	6,749.6	34.3	446.5	36.3	15.00	14.80	-2.64
6,925.0	73.99	2.66	6,757.3	58.1	447.8	60.0	15.00	14.81	-2.52
6,950.0	77.69	2.06	6,763.4	82.3	448.8	84.2	15.00	14.81	-2.43

Database: EDM 5000.1 Single User Db
Company: D90 Energy, LLC
Project: Jackson County, Colorado
Site: Sec 6, T6N, R80W, 6th PM
Well: Damfino 0680 8-6H31
Wellbore: Wellbore #1
Design: Design #1

Local Co-ordinate Reference:
TVD Reference:
MD Reference:
North Reference:
Survey Calculation Method:

Well Damfino 0680 8-6H31
 RKB @ 8243.5usft (Cylcone #33)
 RKB @ 8243.5usft (Cylcone #33)
 True
 Minimum Curvature

Planned Survey

Measured Depth (usft)	Inclination (°)	Azimuth (°)	Vertical Depth (usft)	+N/-S (usft)	+E/-W (usft)	Vertical Section (usft)	Dogleg Rate (°/100usft)	Build Rate (°/100usft)	Turn Rate (°/100usft)
6,975.0	81.40	1.47	6,767.9	106.9	449.5	108.8	15.00	14.82	-2.36
7,000.0	85.10	0.89	6,770.9	131.7	450.0	133.6	15.00	14.82	-2.32
7,025.0	88.81	0.31	6,772.2	156.6	450.3	158.6	15.00	14.82	-2.29
EOB @ 89.19° Inc. / 0.25° Azm									
7,027.6	89.20	0.25	6,772.3	159.3	450.3	161.2	15.00	14.83	-2.28
7,100.0	89.20	0.25	6,773.3	231.6	450.6	233.6	0.00	0.00	0.00
7,200.0	89.20	0.25	6,774.7	331.6	451.1	333.6	0.00	0.00	0.00
7,300.0	89.20	0.25	6,776.1	431.6	451.5	433.6	0.00	0.00	0.00
7,400.0	89.20	0.25	6,777.5	531.6	451.9	533.6	0.00	0.00	0.00
7,500.0	89.20	0.25	6,778.8	631.6	452.4	633.5	0.00	0.00	0.00
7,600.0	89.20	0.25	6,780.2	731.6	452.8	733.5	0.00	0.00	0.00
7,700.0	89.20	0.25	6,781.6	831.6	453.3	833.5	0.00	0.00	0.00
7,800.0	89.20	0.25	6,783.0	931.5	453.7	933.5	0.00	0.00	0.00
7,900.0	89.20	0.25	6,784.4	1,031.5	454.2	1,033.5	0.00	0.00	0.00
8,000.0	89.20	0.25	6,785.8	1,131.5	454.6	1,133.5	0.00	0.00	0.00
8,100.0	89.20	0.25	6,787.2	1,231.5	455.0	1,233.5	0.00	0.00	0.00
8,200.0	89.20	0.25	6,788.6	1,331.5	455.5	1,333.5	0.00	0.00	0.00
8,300.0	89.20	0.25	6,790.0	1,431.5	455.9	1,433.5	0.00	0.00	0.00
8,400.0	89.20	0.25	6,791.4	1,531.5	456.4	1,533.5	0.00	0.00	0.00
8,500.0	89.20	0.25	6,792.8	1,631.5	456.8	1,633.4	0.00	0.00	0.00
8,600.0	89.20	0.25	6,794.2	1,731.5	457.3	1,733.4	0.00	0.00	0.00
8,700.0	89.20	0.25	6,795.6	1,831.4	457.7	1,833.4	0.00	0.00	0.00
8,800.0	89.20	0.25	6,797.0	1,931.4	458.1	1,933.4	0.00	0.00	0.00
8,900.0	89.20	0.25	6,798.4	2,031.4	458.6	2,033.4	0.00	0.00	0.00
9,000.0	89.20	0.25	6,799.8	2,131.4	459.0	2,133.4	0.00	0.00	0.00
9,100.0	89.20	0.25	6,801.2	2,231.4	459.5	2,233.4	0.00	0.00	0.00
9,200.0	89.20	0.25	6,802.6	2,331.4	459.9	2,333.4	0.00	0.00	0.00
9,300.0	89.20	0.25	6,804.0	2,431.4	460.4	2,433.4	0.00	0.00	0.00
9,400.0	89.20	0.25	6,805.4	2,531.4	460.8	2,533.4	0.00	0.00	0.00
9,500.0	89.20	0.25	6,806.8	2,631.4	461.2	2,633.3	0.00	0.00	0.00
9,600.0	89.20	0.25	6,808.2	2,731.4	461.7	2,733.3	0.00	0.00	0.00
9,700.0	89.20	0.25	6,809.6	2,831.3	462.1	2,833.3	0.00	0.00	0.00
9,800.0	89.20	0.25	6,811.0	2,931.3	462.6	2,933.3	0.00	0.00	0.00
9,900.0	89.20	0.25	6,812.4	3,031.3	463.0	3,033.3	0.00	0.00	0.00
10,000.0	89.20	0.25	6,813.8	3,131.3	463.5	3,133.3	0.00	0.00	0.00
10,100.0	89.20	0.25	6,815.1	3,231.3	463.9	3,233.3	0.00	0.00	0.00
10,200.0	89.20	0.25	6,816.5	3,331.3	464.4	3,333.3	0.00	0.00	0.00
10,300.0	89.20	0.25	6,817.9	3,431.3	464.8	3,433.3	0.00	0.00	0.00
10,400.0	89.20	0.25	6,819.3	3,531.3	465.2	3,533.3	0.00	0.00	0.00
10,500.0	89.20	0.25	6,820.7	3,631.3	465.7	3,633.3	0.00	0.00	0.00
10,600.0	89.20	0.25	6,822.1	3,731.2	466.1	3,733.2	0.00	0.00	0.00
10,700.0	89.20	0.25	6,823.5	3,831.2	466.6	3,833.2	0.00	0.00	0.00
10,800.0	89.20	0.25	6,824.9	3,931.2	467.0	3,933.2	0.00	0.00	0.00
10,900.0	89.20	0.25	6,826.3	4,031.2	467.5	4,033.2	0.00	0.00	0.00
11,000.0	89.20	0.25	6,827.7	4,131.2	467.9	4,133.2	0.00	0.00	0.00
11,100.0	89.20	0.25	6,829.1	4,231.2	468.3	4,233.2	0.00	0.00	0.00
11,200.0	89.20	0.25	6,830.5	4,331.2	468.8	4,333.2	0.00	0.00	0.00
11,300.0	89.20	0.25	6,831.9	4,431.2	469.2	4,433.2	0.00	0.00	0.00
11,400.0	89.20	0.25	6,833.3	4,531.2	469.7	4,533.2	0.00	0.00	0.00
11,500.0	89.20	0.25	6,834.7	4,631.1	470.1	4,633.2	0.00	0.00	0.00
11,600.0	89.20	0.25	6,836.1	4,731.1	470.6	4,733.1	0.00	0.00	0.00
11,700.0	89.20	0.25	6,837.5	4,831.1	471.0	4,833.1	0.00	0.00	0.00
11,800.0	89.20	0.25	6,838.9	4,931.1	471.4	4,933.1	0.00	0.00	0.00
11,900.0	89.20	0.25	6,840.3	5,031.1	471.9	5,033.1	0.00	0.00	0.00

Database:	EDM 5000.1 Single User Db	Local Co-ordinate Reference:	Well Damfino 0680 8-6H31
Company:	D90 Energy, LLC	TVD Reference:	RKB @ 8243.5usft (Cylcone #33)
Project:	Jackson County, Colorado	MD Reference:	RKB @ 8243.5usft (Cylcone #33)
Site:	Sec 6, T6N, R80W, 6th PM	North Reference:	True
Well:	Damfino 0680 8-6H31	Survey Calculation Method:	Minimum Curvature
Wellbore:	Wellbore #1		
Design:	Design #1		

Planned Survey

Measured Depth (usft)	Inclination (°)	Azimuth (°)	Vertical Depth (usft)	+N/-S (usft)	+E/-W (usft)	Vertical Section (usft)	Dogleg Rate (°/100usft)	Build Rate (°/100usft)	Turn Rate (°/100usft)
12,000.0	89.20	0.25	6,841.7	5,131.1	472.3	5,133.1	0.00	0.00	0.00
12,100.0	89.20	0.25	6,843.1	5,231.1	472.8	5,233.1	0.00	0.00	0.00
12,200.0	89.20	0.25	6,844.5	5,331.1	473.2	5,333.1	0.00	0.00	0.00
12,300.0	89.20	0.25	6,845.9	5,431.1	473.7	5,433.1	0.00	0.00	0.00
12,400.0	89.20	0.25	6,847.3	5,531.0	474.1	5,533.1	0.00	0.00	0.00
12,500.0	89.20	0.25	6,848.7	5,631.0	474.5	5,633.1	0.00	0.00	0.00
12,600.0	89.20	0.25	6,850.1	5,731.0	475.0	5,733.0	0.00	0.00	0.00
12,700.0	89.20	0.25	6,851.5	5,831.0	475.4	5,833.0	0.00	0.00	0.00
12,800.0	89.20	0.25	6,852.8	5,931.0	475.9	5,933.0	0.00	0.00	0.00
12,900.0	89.20	0.25	6,854.2	6,031.0	476.3	6,033.0	0.00	0.00	0.00
13,000.0	89.20	0.25	6,855.6	6,131.0	476.8	6,133.0	0.00	0.00	0.00
13,100.0	89.20	0.25	6,857.0	6,231.0	477.2	6,233.0	0.00	0.00	0.00
13,200.0	89.20	0.25	6,858.4	6,331.0	477.6	6,333.0	0.00	0.00	0.00
13,300.0	89.20	0.25	6,859.8	6,431.0	478.1	6,433.0	0.00	0.00	0.00
13,400.0	89.20	0.25	6,861.2	6,530.9	478.5	6,533.0	0.00	0.00	0.00
13,500.0	89.20	0.25	6,862.6	6,630.9	479.0	6,633.0	0.00	0.00	0.00
13,600.0	89.20	0.25	6,864.0	6,730.9	479.4	6,732.9	0.00	0.00	0.00
13,700.0	89.20	0.25	6,865.4	6,830.9	479.9	6,832.9	0.00	0.00	0.00
13,800.0	89.20	0.25	6,866.8	6,930.9	480.3	6,932.9	0.00	0.00	0.00
13,900.0	89.20	0.25	6,868.2	7,030.9	480.7	7,032.9	0.00	0.00	0.00
14,000.0	89.20	0.25	6,869.6	7,130.9	481.2	7,132.9	0.00	0.00	0.00
14,100.0	89.20	0.25	6,871.0	7,230.9	481.6	7,232.9	0.00	0.00	0.00
14,200.0	89.20	0.25	6,872.4	7,330.9	482.1	7,332.9	0.00	0.00	0.00
14,300.0	89.20	0.25	6,873.8	7,430.8	482.5	7,432.9	0.00	0.00	0.00
14,400.0	89.20	0.25	6,875.2	7,530.8	483.0	7,532.9	0.00	0.00	0.00
14,500.0	89.20	0.25	6,876.6	7,630.8	483.4	7,632.9	0.00	0.00	0.00
14,600.0	89.20	0.25	6,878.0	7,730.8	483.8	7,732.9	0.00	0.00	0.00
14,700.0	89.20	0.25	6,879.4	7,830.8	484.3	7,832.8	0.00	0.00	0.00
14,800.0	89.20	0.25	6,880.8	7,930.8	484.7	7,932.8	0.00	0.00	0.00
14,900.0	89.20	0.25	6,882.2	8,030.8	485.2	8,032.8	0.00	0.00	0.00
15,000.0	89.20	0.25	6,883.6	8,130.8	485.6	8,132.8	0.00	0.00	0.00
15,100.0	89.20	0.25	6,885.0	8,230.8	486.1	8,232.8	0.00	0.00	0.00
15,200.0	89.20	0.25	6,886.4	8,330.7	486.5	8,332.8	0.00	0.00	0.00
15,300.0	89.20	0.25	6,887.8	8,430.7	486.9	8,432.8	0.00	0.00	0.00
15,400.0	89.20	0.25	6,889.1	8,530.7	487.4	8,532.8	0.00	0.00	0.00
15,500.0	89.20	0.25	6,890.5	8,630.7	487.8	8,632.8	0.00	0.00	0.00
15,600.0	89.20	0.25	6,891.9	8,730.7	488.3	8,732.8	0.00	0.00	0.00
15,700.0	89.20	0.25	6,893.3	8,830.7	488.7	8,832.7	0.00	0.00	0.00
15,800.0	89.20	0.25	6,894.7	8,930.7	489.2	8,932.7	0.00	0.00	0.00
15,900.0	89.20	0.25	6,896.1	9,030.7	489.6	9,032.7	0.00	0.00	0.00
16,000.0	89.20	0.25	6,897.5	9,130.7	490.0	9,132.7	0.00	0.00	0.00
16,100.0	89.20	0.25	6,898.9	9,230.7	490.5	9,232.7	0.00	0.00	0.00
16,200.0	89.20	0.25	6,900.3	9,330.6	490.9	9,332.7	0.00	0.00	0.00
16,300.0	89.20	0.25	6,901.7	9,430.6	491.4	9,432.7	0.00	0.00	0.00
16,400.0	89.20	0.25	6,903.1	9,530.6	491.8	9,532.7	0.00	0.00	0.00
16,500.0	89.20	0.25	6,904.5	9,630.6	492.3	9,632.7	0.00	0.00	0.00
16,600.0	89.20	0.25	6,905.9	9,730.6	492.7	9,732.7	0.00	0.00	0.00
16,700.0	89.20	0.25	6,907.3	9,830.6	493.1	9,832.6	0.00	0.00	0.00
16,800.0	89.20	0.25	6,908.7	9,930.6	493.6	9,932.6	0.00	0.00	0.00
16,900.0	89.20	0.25	6,910.1	10,030.6	494.0	10,032.6	0.00	0.00	0.00
17,000.0	89.20	0.25	6,911.5	10,130.6	494.5	10,132.6	0.00	0.00	0.00
17,100.0	89.20	0.25	6,912.9	10,230.5	494.9	10,232.6	0.00	0.00	0.00

TD @ 17115.9' MD / 6913.1' TVD



Database:	EDM 5000.1 Single User Db	Local Co-ordinate Reference:	Well Damfino 0680 8-6H31
Company:	D90 Energy, LLC	TVD Reference:	RKB @ 8243.5usft (Cylcone #33)
Project:	Jackson County, Colorado	MD Reference:	RKB @ 8243.5usft (Cylcone #33)
Site:	Sec 6, T6N, R80W, 6th PM	North Reference:	True
Well:	Damfino 0680 8-6H31	Survey Calculation Method:	Minimum Curvature
Wellbore:	Wellbore #1		
Design:	Design #1		

Planned Survey									
Measured Depth (usft)	Inclination (°)	Azimuth (°)	Vertical Depth (usft)	+N/-S (usft)	+E/-W (usft)	Vertical Section (usft)	Dogleg Rate (°/100usft)	Build Rate (°/100usft)	Turn Rate (°/100usft)
17,115.9	89.20	0.25	6,913.1	10,246.5	495.0	10,248.6	0.00	0.00	0.00

Design Targets									
Target Name	Dip Angle (°)	Dip Dir. (°)	TVD (usft)	+N/-S (usft)	+E/-W (usft)	Northing (usft)	Easting (usft)	Latitude	Longitude
- hit/miss target									
- Shape									
PBHL - Damfino 0680	0.00	0.00	6,913.1	10,246.5	495.0	1,441,180.56	2,745,549.86	40.540835	-106.415530
- plan hits target center									
- Point									

Formations					
Measured Depth (usft)	Vertical Depth (usft)	Name	Lithology	Dip (°)	Dip Direction (°)
2,230.0	2,230.0	LNCE		0.80	0.25
3,160.0	3,160.0	FXHLS		0.80	0.25
3,500.0	3,500.0	PIRR		0.80	0.25
4,477.9	4,469.3	SSSX		0.80	0.25
5,066.2	5,048.6	SNNN		0.80	0.25
5,248.7	5,228.4	PIRRL		0.80	0.25
6,252.8	6,217.2	MNCS		0.80	0.25
6,603.3	6,557.5	NBRR		0.80	0.25

Plan Annotations				
Measured Depth (usft)	Vertical Depth (usft)	Local Coordinates		Comment
		+N/-S (usft)	+E/-W (usft)	
3,685.0	3,685.0	0.0	0.0	KOP (Build 3° / 100')
4,018.2	4,016.5	-14.1	25.3	EOB @ 10.00° Inc. / 119.18° Azm
6,400.8	6,362.9	-215.8	386.4	Build 15° / 100'
7,027.6	6,772.3	159.3	450.3	EOB @ 89.19° Inc. / 0.25° Azm
17,115.9	6,913.1	10,246.5	495.0	TD @ 17115.9' MD / 6913.1' TVD