

EnCana Corporation
Planning Report - Geographic



RECEIVED
DEC 19 06
CUGCC



Database: EDM
Company: DJ/Paradox
Project: DJ Basin
Site: New Drills 2007
Well: Wheeler 13-1 SHL#2
Wellbore: Wheeler 13-1
Design: Directional Plan #2

Local Co-ordinate Reference: Well Wheeler 13-1 SHL#2
TVD Reference: WELL @ 4924.0ft (Original Well Elev)
MD Reference: WELL @ 4924.0ft (Original Well Elev)
North Reference: True
Survey Calculation Method: Minimum Curvature

Project DJ Basin

Map System: US State Plane 1983
Geo Datum: North American Datum 1983
Map Zone: Colorado Central Zone
System Datum: Mean Sea Level

Site New Drills 2007

Site Position:
From: Lat/Long
Position Uncertainty: ft
Northing: 551,649.29 m
Easting: 952,002.50 m
Slot Radius: in
Latitude: 40° 3' 21.888 N
Longitude: 105° 3' 33.660 W
Grid Convergence: 0.28 °

Well Wheeler 13-1 SHL#2

Well Position +N/-S 0.0 ft **Northing:** 554,544.67 m **Latitude:** 40° 4' 55.808 N
+E/-W 0.0 ft **Easting:** 951,650.67 m **Longitude:** 105° 3' 47.916 W
Position Uncertainty ft **Wellhead Elevation:** ft **Ground Level:** 4,908.0 ft

Wellbore Wheeler 13-1

Magnetics	Model Name	Sample Date	Declination (°)	Dip Angle (°)	Field Strength (nT)
	IGRF200510	12/14/2006	9.57	66.90	53,417

Design Directional Plan #2

Audit Notes:

Version: **Phase:** PROTOTYPE **Tie On Depth:** 0.0

Vertical Section:	Depth From (TVD) (ft)	+N/-S (ft)	+E/-W (ft)	Direction (°)
	0.0	0.0	0.0	8.19

Plan Sections

Measured Depth (ft)	Inclination (°)	Azimuth (°)	Vertical Depth (ft)	+N/-S (ft)	+E/-W (ft)	Dogleg Rate (°/100ft)	Build Rate (°/100ft)	Turn Rate (°/100ft)	TFO (°)	Target
0.0	0.00	8.19	0.0	0.0	0.0	0.00	0.00	0.00	0.00	
1,200.0	0.00	8.19	1,200.0	0.0	0.0	0.00	0.00	0.00	0.00	
1,943.5	14.87	8.19	1,935.1	94.9	13.7	2.00	2.00	0.00	8.19	
6,246.3	14.87	8.19	6,093.9	1,187.8	171.0	0.00	0.00	0.00	0.00	
6,989.7	0.00	8.19	6,829.0	1,282.8	184.7	2.00	-2.00	0.00	180.00	
8,274.7	0.00	8.19	8,114.0	1,282.8	184.7	0.00	0.00	0.00	0.00	BHL Wheeler31-1

EnCana Corporation
Planning Report - Geographic

Database:	EDM	Local Co-ordinate Reference:	Well Wheeler 13-1 SHL#2
Company:	DJ/Paradox	TVD Reference:	WELL @ 4924.0ft (Original Well Elev)
Project:	DJ Basin	MD Reference:	WELL @ 4924.0ft (Original Well Elev)
Site:	New Drills 2007	North Reference:	True
Well:	Wheeler 13-1 SHL#2	Survey Calculation Method:	Minimum Curvature
Wellbore:	Wheeler 13-1		
Design:	Directional Plan #2		

Planned Survey

Measured Depth (ft)	Inclination (°)	Azimuth (°)	Vertical Depth (ft)	+N/-S (ft)	+E/-W (ft)	Map Northing (m)	Map Easting (m)	Latitude	Longitude
0.0	0.00	8.19	0.0	0.0	0.0	554,544.67	951,650.67	40° 4' 55.808 N	105° 3' 47.916 W
100.0	0.00	8.19	100.0	0.0	0.0	554,544.67	951,650.67	40° 4' 55.808 N	105° 3' 47.916 W
200.0	0.00	8.19	200.0	0.0	0.0	554,544.67	951,650.67	40° 4' 55.808 N	105° 3' 47.916 W
300.0	0.00	8.19	300.0	0.0	0.0	554,544.67	951,650.67	40° 4' 55.808 N	105° 3' 47.916 W
400.0	0.00	8.19	400.0	0.0	0.0	554,544.67	951,650.67	40° 4' 55.808 N	105° 3' 47.916 W
500.0	0.00	8.19	500.0	0.0	0.0	554,544.67	951,650.67	40° 4' 55.808 N	105° 3' 47.916 W
600.0	0.00	8.19	600.0	0.0	0.0	554,544.67	951,650.67	40° 4' 55.808 N	105° 3' 47.916 W
700.0	0.00	8.19	700.0	0.0	0.0	554,544.67	951,650.67	40° 4' 55.808 N	105° 3' 47.916 W
800.0	0.00	8.19	800.0	0.0	0.0	554,544.67	951,650.67	40° 4' 55.808 N	105° 3' 47.916 W
900.0	0.00	8.19	900.0	0.0	0.0	554,544.67	951,650.67	40° 4' 55.808 N	105° 3' 47.916 W
1,000.0	0.00	8.19	1,000.0	0.0	0.0	554,544.67	951,650.67	40° 4' 55.808 N	105° 3' 47.916 W
1,100.0	0.00	8.19	1,100.0	0.0	0.0	554,544.67	951,650.67	40° 4' 55.808 N	105° 3' 47.916 W
1,200.0	0.00	8.19	1,200.0	0.0	0.0	554,544.67	951,650.67	40° 4' 55.808 N	105° 3' 47.916 W
1,300.0	2.00	8.19	1,300.0	1.7	0.2	554,545.20	951,650.74	40° 4' 55.825 N	105° 3' 47.913 W
1,400.0	4.00	8.19	1,399.8	6.9	1.0	554,546.78	951,650.96	40° 4' 55.877 N	105° 3' 47.903 W
1,500.0	6.00	8.19	1,499.5	15.5	2.2	554,549.41	951,651.33	40° 4' 55.962 N	105° 3' 47.887 W
1,600.0	8.00	8.19	1,598.7	27.6	4.0	554,553.09	951,651.84	40° 4' 56.081 N	105° 3' 47.865 W
1,700.0	10.00	8.19	1,697.5	43.1	6.2	554,557.81	951,652.50	40° 4' 56.234 N	105° 3' 47.836 W
1,800.0	12.00	8.19	1,795.6	62.0	8.9	554,563.57	951,653.30	40° 4' 56.421 N	105° 3' 47.801 W
1,900.0	14.00	8.19	1,893.1	84.2	12.1	554,570.36	951,654.24	40° 4' 56.641 N	105° 3' 47.760 W
1,943.5	14.87	8.19	1,935.1	94.9	13.7	554,573.63	951,654.70	40° 4' 56.747 N	105° 3' 47.740 W
2,000.0	14.87	8.19	1,989.8	109.3	15.7	554,578.01	951,655.31	40° 4' 56.889 N	105° 3' 47.714 W
2,100.0	14.87	8.19	2,086.4	134.7	19.4	554,585.76	951,656.39	40° 4' 57.139 N	105° 3' 47.666 W
2,200.0	14.87	8.19	2,183.1	160.1	23.1	554,593.51	951,657.46	40° 4' 57.390 N	105° 3' 47.619 W
2,300.0	14.87	8.19	2,279.7	185.5	26.7	554,601.25	951,658.54	40° 4' 57.641 N	105° 3' 47.572 W
2,400.0	14.87	8.19	2,376.4	210.9	30.4	554,609.00	951,659.62	40° 4' 57.892 N	105° 3' 47.525 W
2,500.0	14.87	8.19	2,473.0	236.3	34.0	554,616.75	951,660.69	40° 4' 58.143 N	105° 3' 47.478 W
2,600.0	14.87	8.19	2,569.7	261.7	37.7	554,624.49	951,661.77	40° 4' 58.394 N	105° 3' 47.431 W
2,700.0	14.87	8.19	2,666.3	287.1	41.3	554,632.24	951,662.85	40° 4' 58.645 N	105° 3' 47.384 W
2,800.0	14.87	8.19	2,763.0	312.5	45.0	554,639.99	951,663.93	40° 4' 58.896 N	105° 3' 47.337 W
2,900.0	14.87	8.19	2,859.7	337.9	48.7	554,647.73	951,665.00	40° 4' 59.147 N	105° 3' 47.290 W
3,000.0	14.87	8.19	2,956.3	363.3	52.3	554,655.48	951,666.08	40° 4' 59.398 N	105° 3' 47.243 W
3,100.0	14.87	8.19	3,053.0	388.7	56.0	554,663.23	951,667.16	40° 4' 59.649 N	105° 3' 47.196 W
3,200.0	14.87	8.19	3,149.6	414.1	59.6	554,670.98	951,668.24	40° 4' 59.900 N	105° 3' 47.149 W
3,300.0	14.87	8.19	3,246.3	439.5	63.3	554,678.72	951,669.31	40° 5' 0.151 N	105° 3' 47.102 W
3,400.0	14.87	8.19	3,342.9	464.9	66.9	554,686.47	951,670.39	40° 5' 0.402 N	105° 3' 47.055 W
3,500.0	14.87	8.19	3,439.6	490.3	70.6	554,694.22	951,671.47	40° 5' 0.653 N	105° 3' 47.008 W
3,600.0	14.87	8.19	3,536.2	515.7	74.2	554,701.96	951,672.55	40° 5' 0.904 N	105° 3' 46.961 W
3,700.0	14.87	8.19	3,632.9	541.1	77.9	554,709.71	951,673.62	40° 5' 1.155 N	105° 3' 46.914 W
3,800.0	14.87	8.19	3,729.5	566.5	81.6	554,717.46	951,674.70	40° 5' 1.406 N	105° 3' 46.867 W
3,900.0	14.87	8.19	3,826.2	591.9	85.2	554,725.20	951,675.78	40° 5' 1.657 N	105° 3' 46.820 W
4,000.0	14.87	8.19	3,922.8	617.3	88.9	554,732.95	951,676.86	40° 5' 1.908 N	105° 3' 46.773 W
4,100.0	14.87	8.19	4,019.5	642.7	92.5	554,740.70	951,677.93	40° 5' 2.159 N	105° 3' 46.726 W
4,200.0	14.87	8.19	4,116.1	668.1	96.2	554,748.45	951,679.01	40° 5' 2.410 N	105° 3' 46.679 W
4,300.0	14.87	8.19	4,212.8	693.5	99.8	554,756.19	951,680.09	40° 5' 2.661 N	105° 3' 46.632 W
4,330.2	14.87	8.19	4,242.0	701.2	101.0	554,758.53	951,680.41	40° 5' 2.737 N	105° 3' 46.617 W
Sussex									
4,400.0	14.87	8.19	4,309.4	718.9	103.5	554,763.94	951,681.17	40° 5' 2.912 N	105° 3' 46.584 W
4,500.0	14.87	8.19	4,406.1	744.3	107.2	554,771.69	951,682.24	40° 5' 3.163 N	105° 3' 46.537 W
4,600.0	14.87	8.19	4,502.7	769.7	110.8	554,779.43	951,683.32	40° 5' 3.414 N	105° 3' 46.490 W
4,700.0	14.87	8.19	4,599.4	795.1	114.5	554,787.18	951,684.40	40° 5' 3.665 N	105° 3' 46.443 W
4,800.0	14.87	8.19	4,696.0	820.5	118.1	554,794.93	951,685.48	40° 5' 3.916 N	105° 3' 46.396 W
4,860.0	14.87	8.19	4,754.0	835.7	120.3	554,799.57	951,686.12	40° 5' 4.066 N	105° 3' 46.368 W
Shannon									

EnCana Corporation
Planning Report - Geographic

Database:	EDM	Local Co-ordinate Reference:	Well Wheeler 13-1 SHL#2
Company:	DJ/Paradox	TVD Reference:	WELL @ 4924.0ft (Original Well Elev)
Project:	DJ Basin	MD Reference:	WELL @ 4924.0ft (Original Well Elev)
Site:	New Drills 2007	North Reference:	True
Well:	Wheeler 13-1 SHL#2	Survey Calculation Method:	Minimum Curvature
Wellbore:	Wheeler 13-1		
Design:	Directional Plan #2		

Planned Survey

Measured Depth (ft)	Inclination (°)	Azimuth (°)	Vertical Depth (ft)	+N/-S (ft)	+E/-W (ft)	Map Northing (m)	Map Easting (m)	Latitude	Longitude
4,900.0	14.87	8.19	4,792.7	845.9	121.8	554,802.67	951,686.55	40° 5' 4.167 N	105° 3' 46.349 W
5,000.0	14.87	8.19	4,889.3	871.3	125.4	554,810.42	951,687.63	40° 5' 4.418 N	105° 3' 46.302 W
5,100.0	14.87	8.19	4,986.0	896.7	129.1	554,818.17	951,688.71	40° 5' 4.669 N	105° 3' 46.255 W
5,200.0	14.87	8.19	5,082.6	922.1	132.8	554,825.91	951,689.78	40° 5' 4.920 N	105° 3' 46.208 W
5,300.0	14.87	8.19	5,179.3	947.5	136.4	554,833.66	951,690.86	40° 5' 5.171 N	105° 3' 46.161 W
5,400.0	14.87	8.19	5,275.9	972.9	140.1	554,841.41	951,691.94	40° 5' 5.422 N	105° 3' 46.114 W
5,500.0	14.87	8.19	5,372.6	998.3	143.7	554,849.16	951,693.02	40° 5' 5.673 N	105° 3' 46.067 W
5,600.0	14.87	8.19	5,469.2	1,023.7	147.4	554,856.90	951,694.09	40° 5' 5.924 N	105° 3' 46.020 W
5,700.0	14.87	8.19	5,565.9	1,049.1	151.0	554,864.65	951,695.17	40° 5' 6.175 N	105° 3' 45.973 W
5,800.0	14.87	8.19	5,662.5	1,074.5	154.7	554,872.40	951,696.25	40° 5' 6.426 N	105° 3' 45.926 W
5,900.0	14.87	8.19	5,759.2	1,099.9	158.4	554,880.14	951,697.33	40° 5' 6.677 N	105° 3' 45.879 W
6,000.0	14.87	8.19	5,855.8	1,125.3	162.0	554,887.89	951,698.40	40° 5' 6.928 N	105° 3' 45.832 W
6,100.0	14.87	8.19	5,952.5	1,150.7	165.7	554,895.64	951,699.48	40° 5' 7.179 N	105° 3' 45.785 W
6,200.0	14.87	8.19	6,049.2	1,176.1	169.3	554,903.38	951,700.56	40° 5' 7.430 N	105° 3' 45.738 W
6,246.3	14.87	8.19	6,093.9	1,187.8	171.0	554,906.97	951,701.06	40° 5' 7.546 N	105° 3' 45.716 W
6,300.0	13.79	8.19	6,145.9	1,201.0	172.9	554,910.98	951,701.62	40° 5' 7.676 N	105° 3' 45.691 W
6,400.0	11.79	8.19	6,243.4	1,222.9	176.1	554,917.67	951,702.55	40° 5' 7.892 N	105° 3' 45.651 W
6,500.0	9.79	8.19	6,341.7	1,241.5	178.7	554,923.32	951,703.33	40° 5' 8.076 N	105° 3' 45.617 W
6,600.0	7.79	8.19	6,440.5	1,256.6	180.9	554,927.94	951,703.97	40° 5' 8.225 N	105° 3' 45.589 W
6,700.0	5.79	8.19	6,539.8	1,268.3	182.6	554,931.51	951,704.47	40° 5' 8.341 N	105° 3' 45.567 W
6,800.0	3.79	8.19	6,639.4	1,276.6	183.8	554,934.03	951,704.82	40° 5' 8.423 N	105° 3' 45.552 W
6,900.0	1.79	8.19	6,739.3	1,281.4	184.5	554,935.50	951,705.03	40° 5' 8.470 N	105° 3' 45.543 W
6,989.7	0.00	8.19	6,829.0	1,282.8	184.7	554,935.93	951,705.08	40° 5' 8.484 N	105° 3' 45.540 W
7,000.0	0.00	8.19	6,839.3	1,282.8	184.7	554,935.93	951,705.08	40° 5' 8.484 N	105° 3' 45.540 W
7,100.0	0.00	8.19	6,939.3	1,282.8	184.7	554,935.93	951,705.08	40° 5' 8.484 N	105° 3' 45.540 W
7,200.0	0.00	8.19	7,039.3	1,282.8	184.7	554,935.93	951,705.08	40° 5' 8.484 N	105° 3' 45.540 W
7,300.0	0.00	8.19	7,139.3	1,282.8	184.7	554,935.93	951,705.08	40° 5' 8.484 N	105° 3' 45.540 W
7,389.7	0.00	8.19	7,229.0	1,282.8	184.7	554,935.93	951,705.08	40° 5' 8.484 N	105° 3' 45.540 W
Niobrara									
7,400.0	0.00	8.19	7,239.3	1,282.8	184.7	554,935.93	951,705.08	40° 5' 8.484 N	105° 3' 45.540 W
7,500.0	0.00	8.19	7,339.3	1,282.8	184.7	554,935.93	951,705.08	40° 5' 8.484 N	105° 3' 45.540 W
7,600.0	0.00	8.19	7,439.3	1,282.8	184.7	554,935.93	951,705.08	40° 5' 8.484 N	105° 3' 45.540 W
7,700.0	0.00	8.19	7,539.3	1,282.8	184.7	554,935.93	951,705.08	40° 5' 8.484 N	105° 3' 45.540 W
7,800.0	0.00	8.19	7,639.3	1,282.8	184.7	554,935.93	951,705.08	40° 5' 8.484 N	105° 3' 45.540 W
7,900.0	0.00	8.19	7,739.3	1,282.8	184.7	554,935.93	951,705.08	40° 5' 8.484 N	105° 3' 45.540 W
8,000.0	0.00	8.19	7,839.3	1,282.8	184.7	554,935.93	951,705.08	40° 5' 8.484 N	105° 3' 45.540 W
8,100.0	0.00	8.19	7,939.3	1,282.8	184.7	554,935.93	951,705.08	40° 5' 8.484 N	105° 3' 45.540 W
8,124.7	0.00	8.19	7,964.0	1,282.8	184.7	554,935.93	951,705.08	40° 5' 8.484 N	105° 3' 45.540 W
J Sand									
8,200.0	0.00	8.19	8,039.3	1,282.8	184.7	554,935.93	951,705.08	40° 5' 8.484 N	105° 3' 45.540 W
8,274.7	0.00	8.19	8,114.0	1,282.8	184.7	554,935.93	951,705.08	40° 5' 8.484 N	105° 3' 45.540 W
TD - BHL Wheeler31-1									

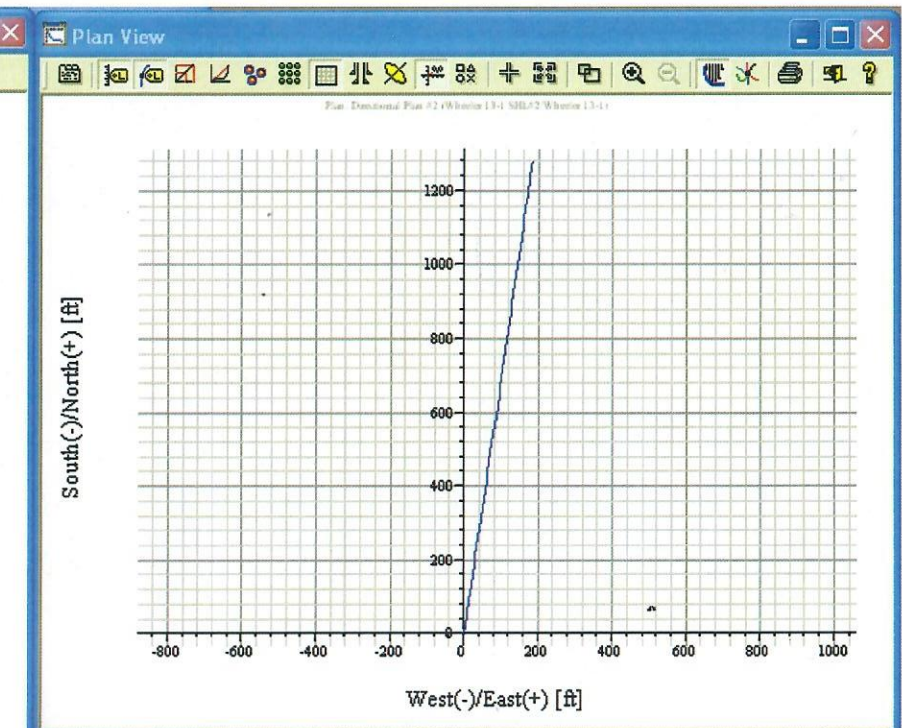
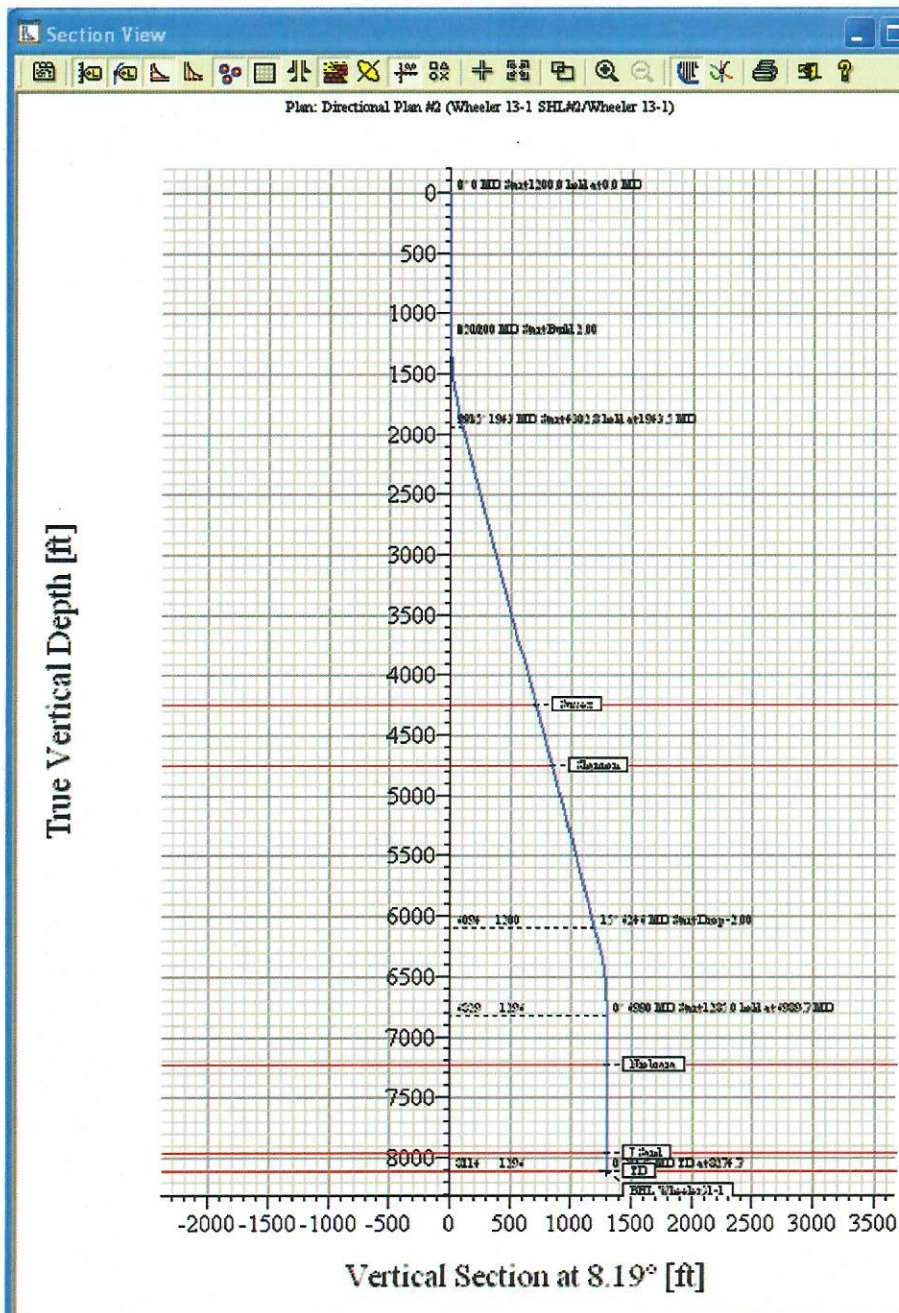
Targets

Target Name - hit/miss target - Shape	Dip Angle (°)	Dip Dir. (°)	TVD (ft)	+N/-S (ft)	+E/-W (ft)	Northing (m)	Easting (m)	Latitude	Longitude
BHL Wheeler31-1 - plan hits target - Point	0.00	0.00	8,114.0	1,282.8	184.7	554,935.93	951,705.08	40° 5' 8.484 N	105° 3' 45.540 W

EnCana Corporation
Planning Report - Geographic

Database:	EDM	Local Co-ordinate Reference:	Well Wheeler 13-1 SHL#2
Company:	DJ/Paradox	TVD Reference:	WELL @ 4924.0ft (Original Well Elev)
Project:	DJ Basin	MD Reference:	WELL @ 4924.0ft (Original Well Elev)
Site:	New Drills 2007	North Reference:	True
Well:	Wheeler 13-1 SHL#2	Survey Calculation Method:	Minimum Curvature
Wellbore:	Wheeler 13-1		
Design:	Directional Plan #2		

Formations						
Measured Depth (ft)	Vertical Depth (ft)	Name	Lithology	Dip (°)	Dip Direction (°)	
4,330.2	4,242.0	Sussex		0.00		
4,860.0	4,754.0	Shannon		0.00		
7,389.7	7,229.0	Niobrara		0.00		
8,124.7	7,964.0	J Sand		0.00		
8,274.7	8,114.0	TD		0.00		



Design Formation Top Editor - Wheeler 13-1 SHL#2/Wheeler 13-1/Directional Plan #2

	MD (ft)	TVD WH (ft)	TVD Sys (ft)	TVD Path (ft)	Name	Lithology	Dip (°)	Dip Dir (°)
1	4330.2	4242.0	-682.0	4242.0	Sussex	(none)	0.00	
2	4860.0	4754.0	-170.0	4754.0	Shannon	(none)	0.00	
3	7389.7	7229.0	2305.0	7229.0	Niobrara	(none)	0.00	
4	8124.7	7964.0	3040.0	7964.0	J Sand	(none)	0.00	
5	8274.7	8114.0	3190.0	8114.0	TD	(none)	0.00	
6								

Surface location: 1940' FNL, 2205' FEL

Bottomhole location: 660' FNL, 2023' FEL

RECEIVED
DEC 19 08
COGCC

EnCana Oil & Gas (USA)
Wheeler 31-1