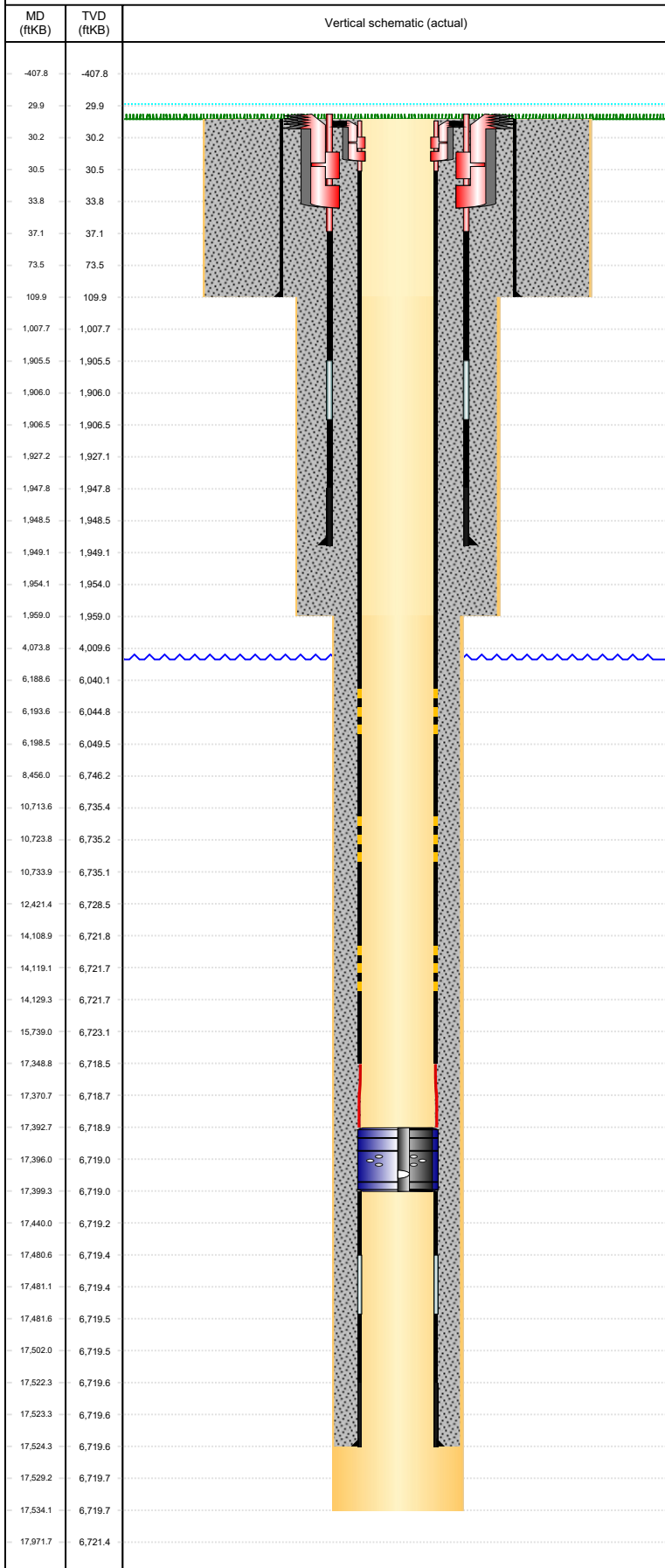


Well Name: GUTTERSEN D10-715

HORIZONTAL, ORIGINAL HOLE, 3/7/2022 8:48:46 AM



Well Header								
API 05-123-48917	Business Unit DJ BASIN		District 15		Well Config HORIZONTAL			
Original KB Elevation (ft) 4,727	KB - GL / MSL (ftKB) 30.00		Spud Date 2/4/2022		P & A Date			
Comment THERE IS AN EXCEPTION TO THE COGCC LOGGING REQUIREMENTS RULE 317.p. A cased-hole neutron log with gamma-ray log will be run from the kick-off point into the surface casing. See Sundry Doc. #402488383 dated 9/14/2020 for COA details. MLVT will be designed and implemented consistent with the June 13, 2014 COGCC MLVT policy. See Sundry Doc. #402476473 dated 08/27/2020								
Directions To Well CR40 & 57 south 1 mile, west 0.26 of a mile into								
Congressional Location								
Quarter 3 SW	Quarter 4 SE	Section 34	Township 4	Twnshp N/S Dir N	Range 64	Range E/W Dir W		
Bottom Hole Legal Location								
Bottom Hole Legal Location 6 15/SESE-34-004N-064W6PM								
Plug Back Total Depths								
Date	Depth (ftKB)	Method		Com				
Wellbore Sections								
Section Des		Size (in)	Act Top, MD (ftKB)		Act Btm, MD (ftKB)			
CONDUCTOR		26	30		110			
SURFACE		13 1/2	110		1,959			
PRODUCTION		8 1/2	1959		17,534			
Zone Statuses								
Zone Name	Status Date	Status	Fluid Type	Job	Prod Method			
Casing Strings								
CONDUCTOR, 110.0ftKB								
Casing Description CONDUCTOR	Run Date 12/16/2021	OD (in) 16	Wt/Len (l... 36.94	Grade A-52A	Top, MD (ft... 30.0	MD (ftKB) 110.0		
SURFACE, 1,949.0ftKB								
Casing Description SURFACE	Run Date 2/4/2022	OD (in) 9 5/8	Wt/Len (l... 36.00	Grade J-55	Top, MD (ft... 29.9	MD (ftKB) 1,949.0		
PRODUCTION, 17,524.4ftKB								
Casing Description PRODUCTION	Run Date 2/9/2022	OD (in) 5 1/2	Wt/Len (l... 17.00	Grade P-110	Top, MD (ft... 30.0	MD (ftKB) 17,524.4		
Cement								
Description Conductor Cement				Top Depth (ftKB) 30.0		Bottom Depth (ftKB) 110.0		
Description Surface Casing Cement				Top Depth (ftKB) 30.0		Bottom Depth (ftKB) 1,949.0		
Description Production Casing Cement				Top Depth (ftKB) 30.0		Bottom Depth (ftKB) 17,524.4		
Tubing Strings								
Tubing Description TUBING - PRODUCTION		Run Date	String...	ID (in)	Wt (lb/ft)	Grade	Len (ft)	Set De...
Other In Hole								
Run Date	Des		Make		OD (in)	Top (ftKB)	Btm (ftKB)	Pr op R un ?
Logs								
Date	Type				Top, MD (ftKB)		Btm, MD (ftKB)	