

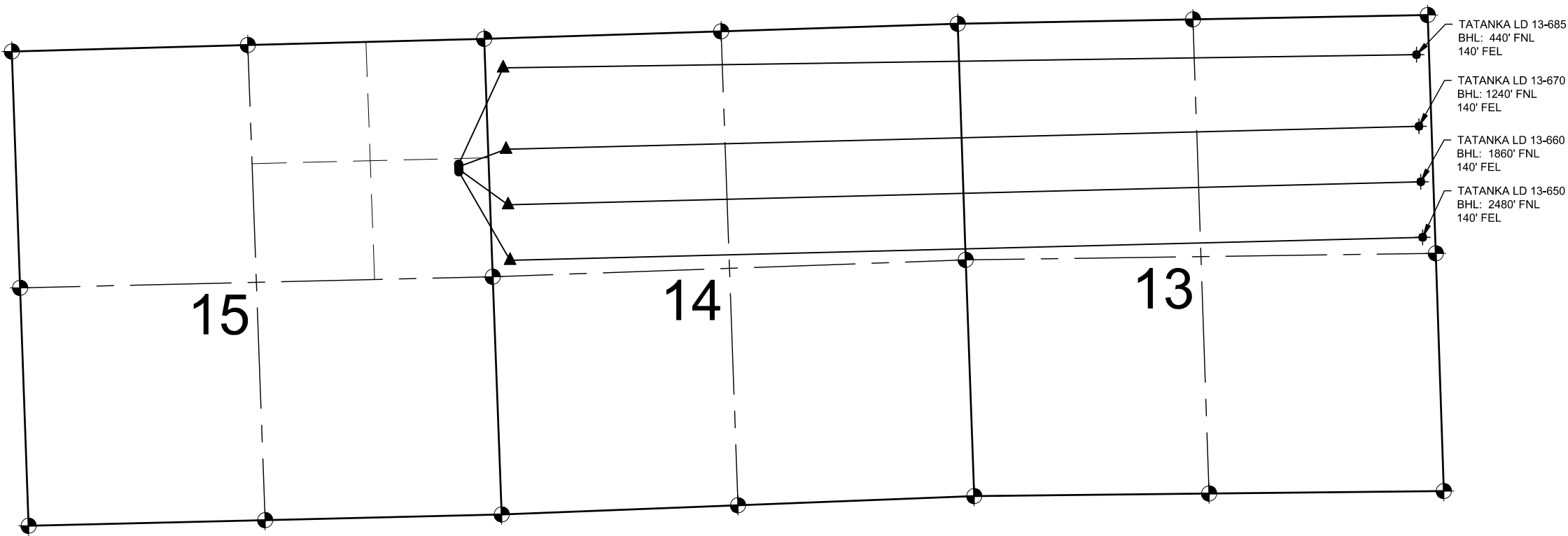
TATANKA LD 15-17 PAD
DIRECTIONAL WELL PLAT

NOTES:

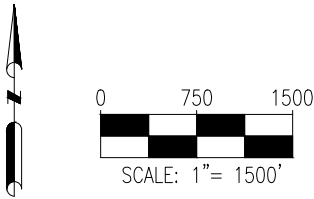
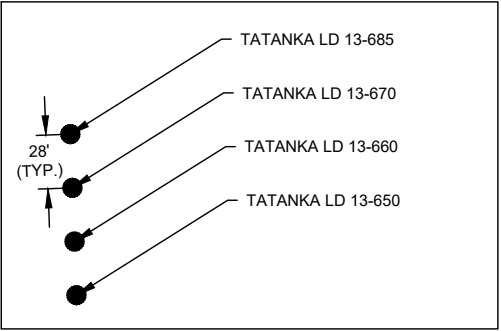
1. THIS FIELD SURVEY CONFORMS TO THE MINIMUM STANDARDS SET BY THE COGCC, RULE NO. 215
2. ALL BEARINGS ARE GRID BEARINGS OF THE COLORADO STATE PLANE COORDINATE SYSTEM, NORTH ZONE, NORTH AMERICAN DATUM 1983/2011. THE LINEAL DIMENSIONS AS SHOWN HEREIN ARE GRID DISTANCES BASED UPON THE "U.S. SURVEY FOOT." TO GET GROUND DISTANCES MULTIPLY SHOWN DISTANCE BY 1.0002676.
3. FIELD VERIFICATION OF MONUMENTS COMPLETED WITHIN 1 YEAR OF SIGNATURE DATE, UNLESS OTHERWISE NOTED.

NOTES:

- TATANKA LD 13-685 TO BE AT 1392' FNL & 335' FEL.
BOTTOM HOLE AT 440' FNL & 140' FEL, SEC. 13.
TATANKA LD 13-670 TO BE AT 1420' FNL & 335' FEL.
BOTTOM HOLE AT 1240' FNL & 140' FEL, SEC. 13.
TATANKA LD 13-660 TO BE AT 1448' FNL & 335' FEL.
BOTTOM HOLE AT 1860' FNL & 140' FEL, SEC. 13.
TATANKA LD 13-650 TO BE AT 1476' FNL & 335' FEL.
BOTTOM HOLE AT 2480' FNL & 140' FEL, SEC. 13.



WELL DETAILS
1" = 100'



LEGEND

- = EXISTING MONUMENT
- = CALCULATED POSITION
- = PROPOSED WELL
- ◆ = EXISTING WELL
- ▲ = LANDING POINT
- ◆ = EXISTING WELL
- ◆ = BOTTOM HOLE