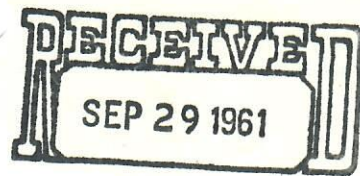
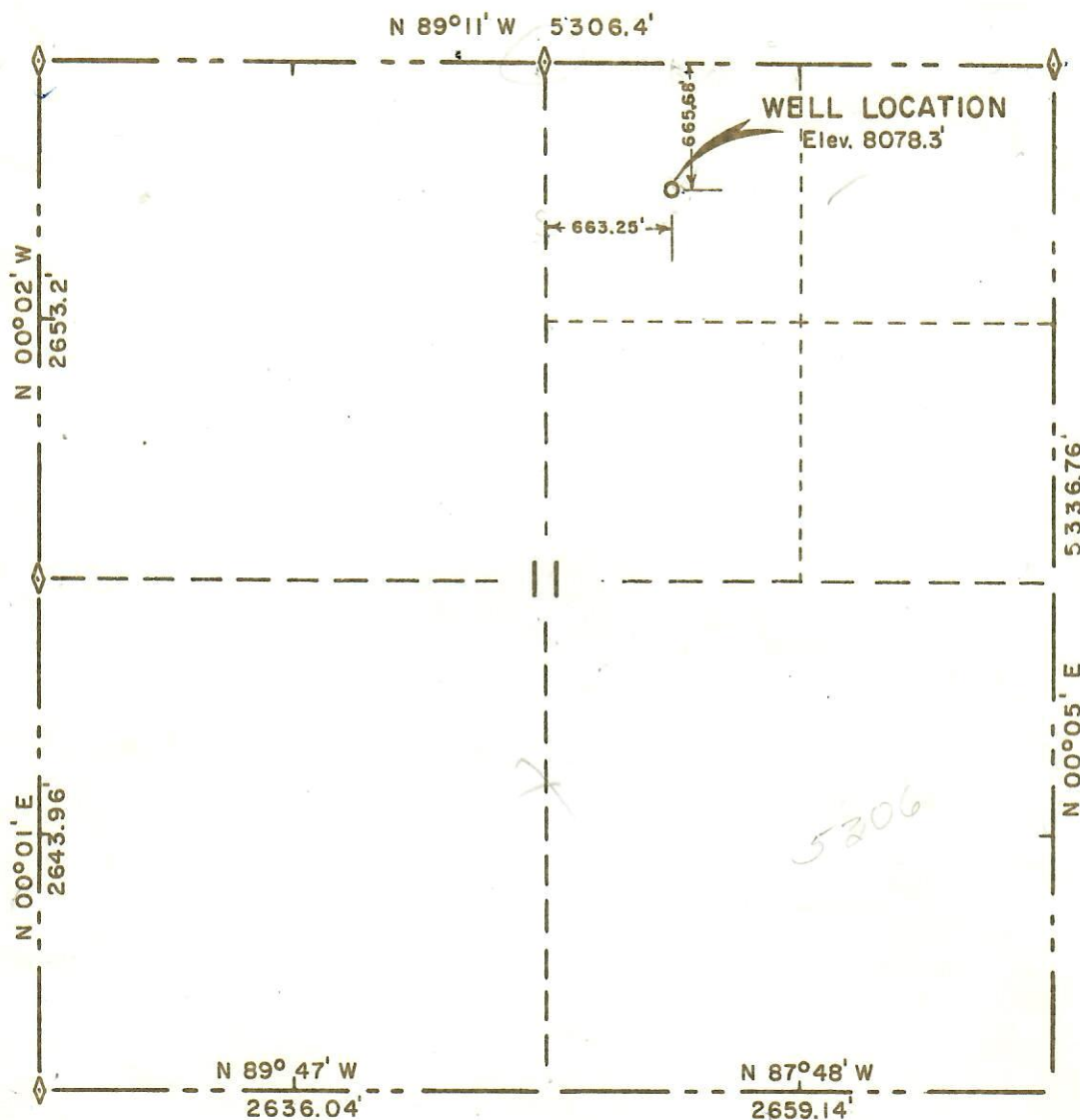




00242341

WELL LOCATION

CTR NW 1/4 NE 1/4 SECTION II
T9N R78W 6TH P.M.OIL & GAS
CONSERVATION COMMISSION

SCALE 1"=1000'

R.P. 200 Ft. North - Elev. 8079.8'
 R.P. 200 Ft. South - Elev. 8075.1'
 R.P. 200 Ft. East - Elev. 8082.9'
 R.P. 200 Ft. West - Elev. 8072.6'

Note: Elevation referred to USGS datum.

I, Richard J. Mandeville do hereby certify that
 this plat was plotted from notes of a field survey
 made under my supervision on May 16, 1961.

Richard J. Mandeville
 Registered Engineer & Land Surveyor

WESTERN ENGINEERS

WELL LOCATION

TEXACO INC.

STATE-C NO. 1

CANADIAN RIVER FIELD

JACKSON COUNTY, COLORADO

SURVEYED *C. J. B.*DRAWN *F. B. F.*

Grand Junction, Colo. 5/17/61