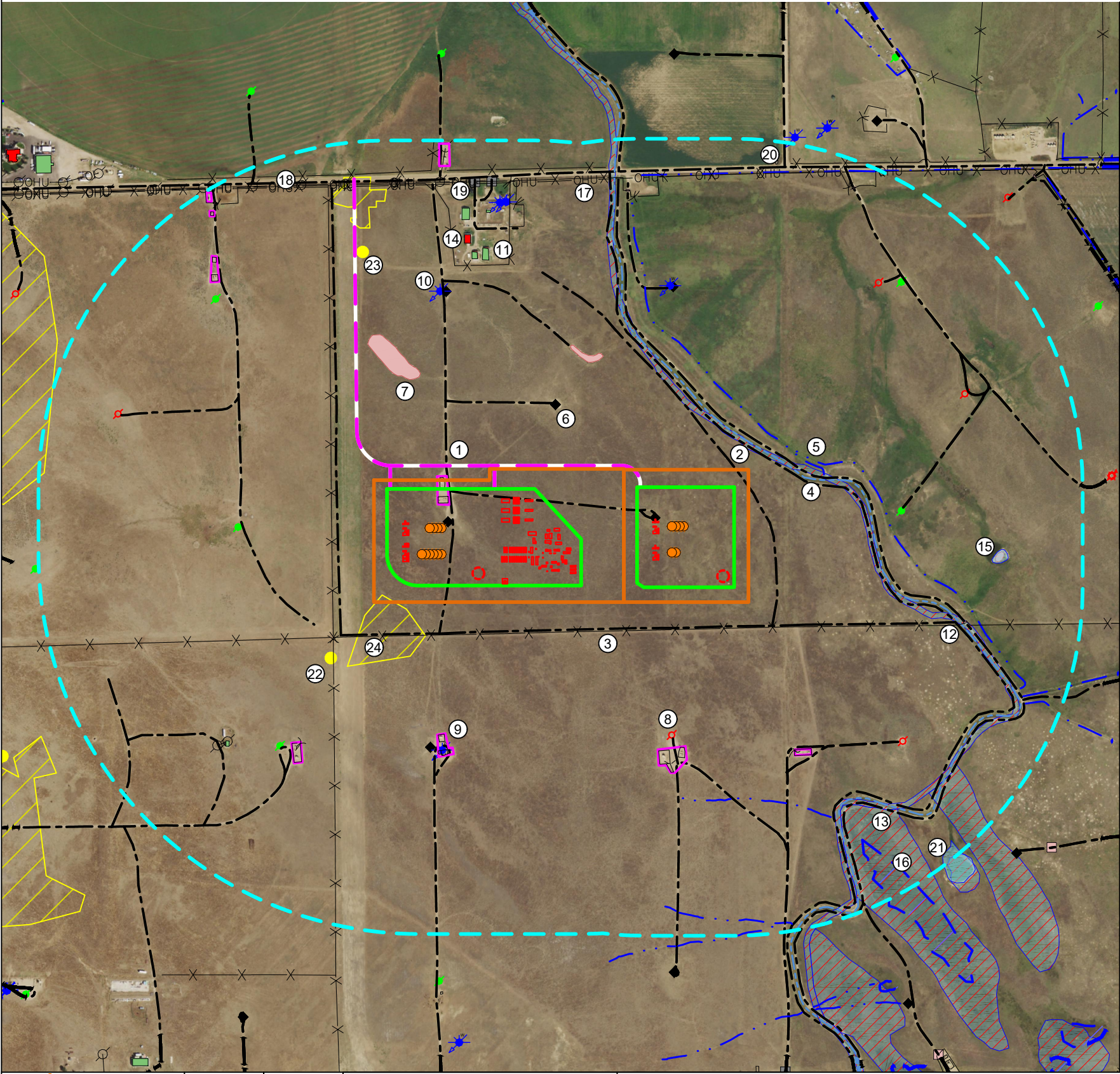
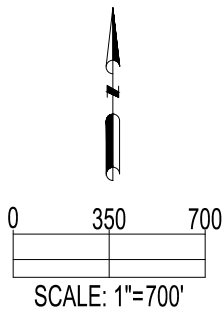


C30-07 MULTI & C30-08 PAD
LOCATION DRAWING



IMPROVEMENTS: (AS MEASURED FROM THE PROPOSED WORKING PAD SURFACE)	
1. PRIVATE ROAD:	±0', ±0', ±69' NE, ±224' S, ±242' NE, ±280' W, ±293' NE, ±464' SE, ±494' N, ±541' SW, ±849' NE, ±862' S, ±918' S, ±970' E, ±970' E, ±983' SE, ±983' SE, ±1001' NW, ±1006' S, ±1055' N, ±1057' SE, ±1057' SE, ±1141' N, ±1161' SW, ±1397' SW, ±1450' NE, ±1450' NE, ±1493' N, ±1571' NE, ±1657' N, ±1737' SW, ±1781' SE, ±1797' N, ±1797' N, ±1817' N, ±1817' N, ±1921' NW, ±1921' NW, ±1964' SE, ±1964' SE
2. SEASONALLY FLOODED INTERMITTENT RIVERINE WETLAND (MAPPED BY USGS)	±232' NE
3. FENCE	±234' S, ±315' W, ±852' S, ±917' S, ±934' S, ±940' S, ±993' SE, ±1097' SW, ±1281' N, ±1349' E, ±1537' NW, ±1627' NW, ±1667' N, ±1812' N, ±1828' N, ±1857' NW, ±1869' N, ±1885' N
4. NERES CANAL (MAPPED BY ASCENT)	±267' NE
5. DITCH (MAPPED BY ASCENT)	±365' NE, ±403' NE, ±1209' S, ±1773' SE, ±1791' N, ±1801' SE, ±1832' S, ±1933' NE
6. EXISTING OIL & GAS WELL	±0', ±0', ±498' NE, ±928' S, ±1133' N, ±1150' N
7. LOW-LYING AREA (MAPPED BY ASCENT)	±627' N, ±761' NW, ±1499' E
8. ABANDONED OIL & GAS WELL	±848' S, ±854' W, ±960' E, ±1176' SW, ±1310' SE, ±1428' NE, ±1436' NE, ±1468' NW, ±1519' NE, ±1602' NW
9. EXISTING FACILITY	±0' (TO BE REMOVED), ±849' S, ±913' S, ±995' SE, ±1091' SW, ±1530' NW, ±1852' NW, ±1853' N, ±1931' NW
10. WATER WELL	±945' S, ±1135' N, ±1157' N, ±1644' N, ±1647' N
11. BUILDINGS	±1314' N, ±1321' N, ±1346' SW, ±1546' N, ±1587' N
12. CATTLE GUARD	±1331' E, ±1699' N, ±1840' NE, ±1907' NW
13. TEMPORARY FLOODED EMERGENT PERSISTENT PALUSTRINE WETLAND (MAPPED BY USGS)	±1398' SE, ±1624' SE
14. RESIDENTIAL BUILDING UNIT	±1410' N
15. POND (MAPPED BY ASCENT)	±1479' E, ±1914' SE
16. WETLAND (MAPPED BY ASCENT)	±1625' SE
17. OVERHEAD UTILITY	±1740' N
18. PUBLIC ROAD (WELD COUNTY ROAD 42)	±1756' N
19. GATE	±1762' N, ±1766' N
20. PUBLIC ROAD (WELD COUNTY ROAD 51)	±1848' N
21. SEMIPERMANENTLY FLOODED PALUSTRINE WETLAND (MAPPED BY USGS)	±1988' SE
22. BLACK NUGGET COAL MINE	±599' SW
23. LA SALLE COAL MINE	±1367' N
24. MINE EXTENT	±128' SW, ±1501' N, ±1969' W



DATA SOURCE: AERIAL IMAGERY: NAIP 2019 WATER WELLS: COLORADO DWR NHD: USGS PUBLICLY AVAILABLE DATA SOURCES HAVE NOT BEEN INDEPENDENTLY VERIFIED BY ASCENT.	OIL & GAS SURFACE ACREAGE: 36.7 ACRES OIL & GAS LOCATION 20.6 ACRES WORKING PAD SURFACE 18.8 ACRES INTERIM RECLAIM	REFERENCE LOCATION **JOHNSON D06-761** LAT: 40.28504° N LONG: 104.59133° W ELEVATION: 4881' 2013' FNL & 1978' FEL PDOP: 1.5 GPS OPERATOR: RYAN DESMOND
--	--	--

DISCLAIMER:
THIS PLOT DOES NOT REPRESENT A MONUMENTED LAND SURVEY AND SHOULD NOT BE RELIED UPON TO DETERMINE BOUNDARY LINES. PROPERTY OWNERSHIP OR OTHER PROPERTY INTERESTS. PARCEL LINES, IF DEPICTED HAVE NOT BEEN FIELD VERIFIED AND MAY BE BASED UPON PUBLICLY AVAILABLE DATA THAT ALSO HAS NOT BEEN INDEPENDENTLY VERIFIED.

CURRENT SURFACE USE: RANGELAND
FUTURE SURFACE USE: RANGELAND

8620 Wolff Court
Westminster, CO 80031
(303) 928-7128
www.ascentgeomatics.com

FIELD DATE:
09-15-18

DRAWN BY:
CSG

DRAWING DATE:
01-21-22

CHECKED BY:
IJM

SITE NAME:
C30-07 MULTI & C30-08 PAD

SURFACE LOCATION:
S 1/2 NE 1/4 SEC. 30, T4N, R64W, 6TH P.M.
WELD COUNTY, COLORADO

LEGEND:

● = PROPOSED WELL
◆ = EXISTING WELL
● = PLUGGED & ABANDONED WELL
● = DRILLED & ABANDONED WELL
● = TEMPORARY ABANDONED WELL

— = CANAL
— = FENCE
— OHU — = OVERHEAD UTILITY
— = DITCH

— = PROPOSED ACCESS ROAD
— = PRIVATE ROAD
— = PUBLIC ROAD
● = MINE
— = MINE EXTENT

— = 2000' BUFFER FROM WPS
— = GATE
— = WETLAND
— = CATTLE GAURD
— = LOW-LYING AREA

— = BUILDING
— = POND
— = PROPOSED FACILITY
— = OIL & GAS LOCATION
— = RESIDENTIAL BUILDING UNIT

— = EXISTING FACILITY
— = WORKING PAD SURFACE
— = PROPOSED MLVT

PREPARED FOR: