

Interim Reclamation and Stormwater Inspection

December 21, 2021

Operator: ANADARKO WATTENBERG OIL COMPLEX LLC #10600

Location ID: 466426

Inspection Document #: 697503598

Weld County, CO

Section 13 T2N R65W

Chris Binschus
Reclamation Specialist, COGCC



COLORADO

**Oil & Gas Conservation
Commission**

Department of Natural Resources

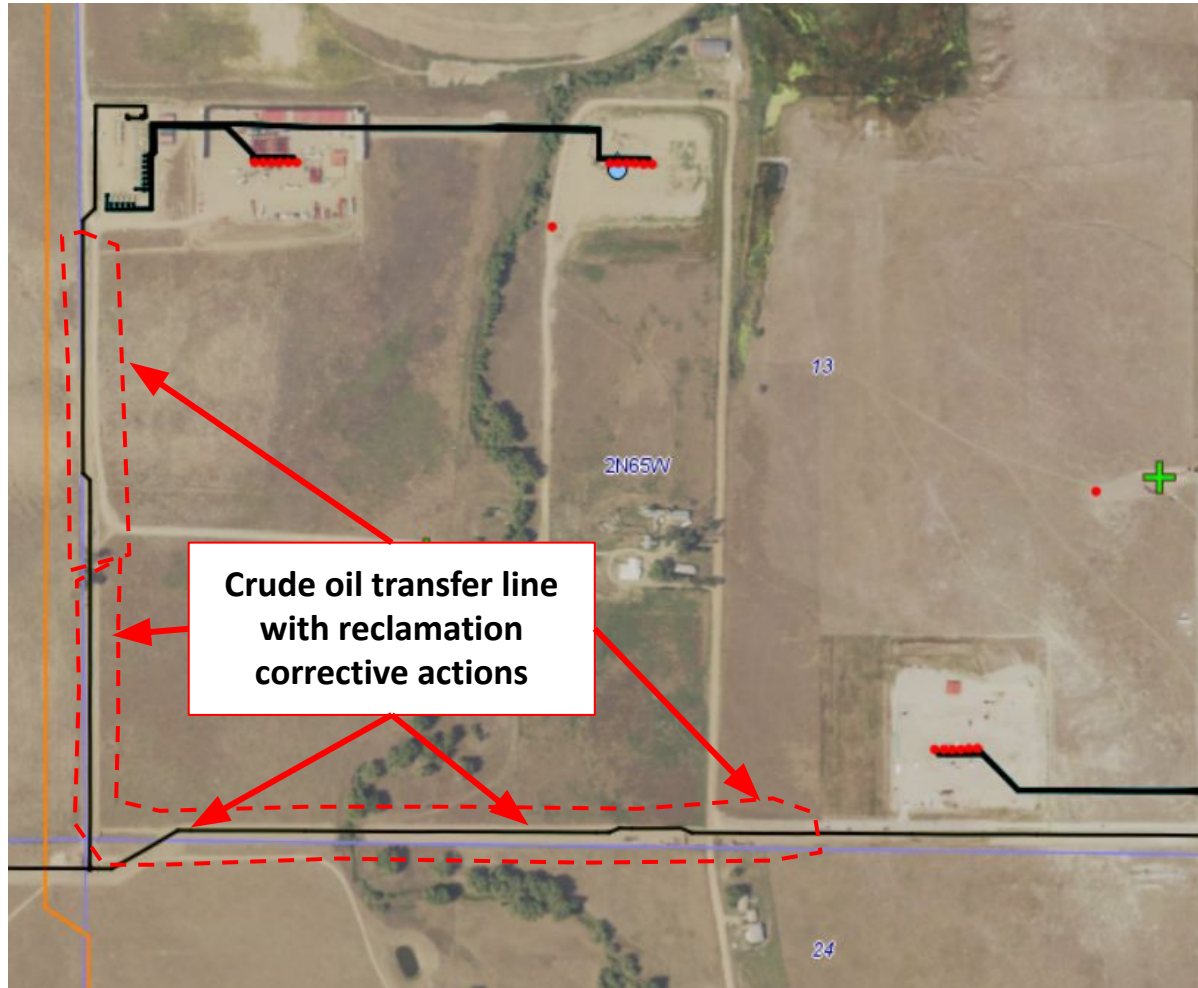


Photo 1. COGCC GISOnline aerial imagery taken 2017. Imagery illustrates a section of a crude oil transfer line with reclamation corrective actions. A List B Colorado noxious weed, Scotch thistle, was observed within the transfer line disturbance. Also, in general, the transfer line appears to consist mostly of annual, weedy vegetation.

Inspection Photos
Location Name: 16-18-1476-4
Location ID: 466426



Photo 2. Photo taken from the northwestern crude oil transfer line, facing South. Photo illustrates Russian thistle, an undesirable plant species, establishment throughout the transfer line.



Inspection Photos
Location Name: 16-18-1476-4
Location ID: 466426



Photo 3. Photo taken from the northwestern crude oil transfer line, facing North. See comments under Photo 2.



Inspection Photos
Location Name: 16-18-1476-4
Location ID: 466426



Photo 4. Photo taken from the southwestern crude oil transfer line, facing North. See comments under Photo 2. There were some desirable plant species observed throughout portions of the southwestern transfer line.



Inspection Photos
Location Name: 16-18-1476-4
Location ID: 466426



Photo 5. Photo taken from the southwestern crude oil transfer line, facing South. See comments under Photo 2 and 4.



COLORADO
Oil & Gas Conservation
Commission
Department of Natural Resources

Inspection Number: 697503598

Inspection Photos
Location Name: 16-18-1476-4
Location ID: 466426



Photo 6. Photo taken from the southwestern crude oil transfer line, facing East. See comments under Photo 2 and 4.



Inspection Photos
Location Name: 16-18-1476-4
Location ID: 466426



Photo 7. Photo taken from the southeastern crude oil transfer line, facing West. See comments under Photo 2.

