



MICRO LOG

Company	MULL DRILLING CO., INC.	Location:	API # : 05-073-06779-0000	Other Services CDL/CNL DIL/SON
Well	BSR A #1-19	SEC 19 TWP 12S RGE 53W		
Field	WILDCAT	1364' FNL & 2481' FWL		
County	LINCOLN	State	COLORADO	
Permanent Datum	GROUND LEVEL	Elevation	4927	
Log Measured From	KELLY BUSHING 19' A.G.L.			
Drilling Measured From	KELLY BUSHING			
Date	10/17/21			
Run Number	TWO			
Depth Driller	6950			
Depth Logger	6950			
Bottom Logged Interval	6935			
Top Log Interval	4800			
Casing Driller	8 5/8" @ 385			
Casing Logger	385			
Bit Size	7 7/8"			
Type Fluid in Hole	CHEMICAL MUD			
Density / Viscosity	9.4/45			
pH / Fluid Loss	10.0/8.8			
Source of Sample	FLOWLINE			
Rm @ Meas. Temp	1.2 @ 60F			
Rmf @ Meas. Temp	.60 @ 60F			
Rmc @ Meas. Temp	.96 @ 60F			
Source of Rmf / Rmc	MEASURED			
Rm @ BHT	.50 @ 143F			
Time Circulation Stopped	2 HOURS			
Time Logger on Bottom	////			
Maximum Recorded Temperature	143F			
Equipment Number	1523			
Location	HAYS, KANSAS			
Recorded By	GUS PFANENSTIEL			
Witnessed By	BLAKE MILLER			

<<< Fold Here >>>

All interpretations are opinions based on inferences from electrical or other measurements and we cannot and do not guarantee the accuracy or correctness of any interpretation, and we shall not, except in the case of gross or willful negligence on our part, be liable or responsible for any loss, costs, damages, or expenses incurred or sustained by anyone resulting from any interpretation made by any of our officers, agents or employees. These interpretations are also subject to our general terms and conditions set out in our current Price Schedule.

Comments

THANK YOU FOR USING ELI WIRELINE, HAYS, KS. (785) 628-6395

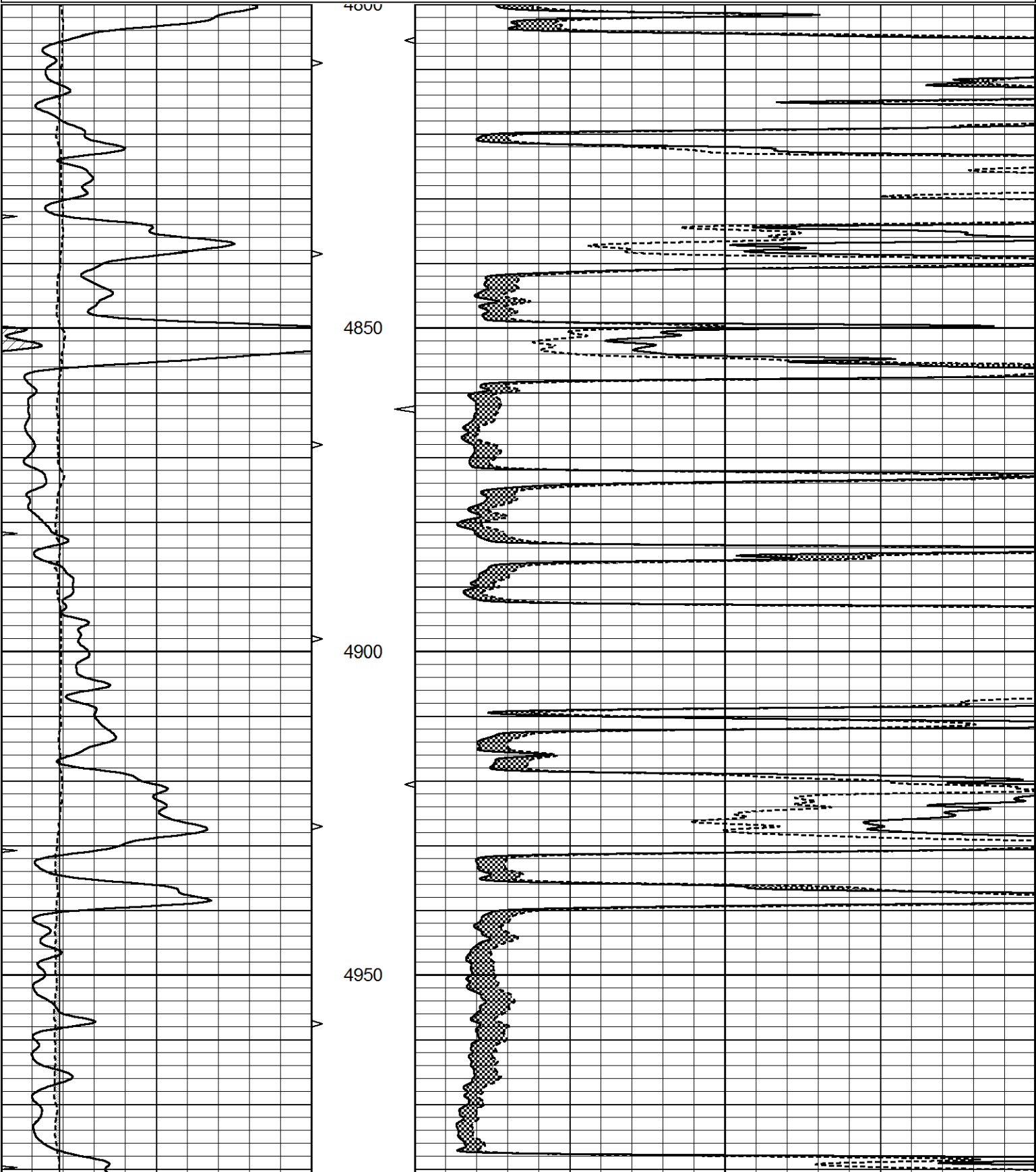
DIRECTIONS: HUGO COLORADO SOUTH 14 MILES TO G2 RD., WEST 5.5 MILES TO ENTRANCE, NORTH INTO ABOUT 2.5 MILES IN PASTURE.

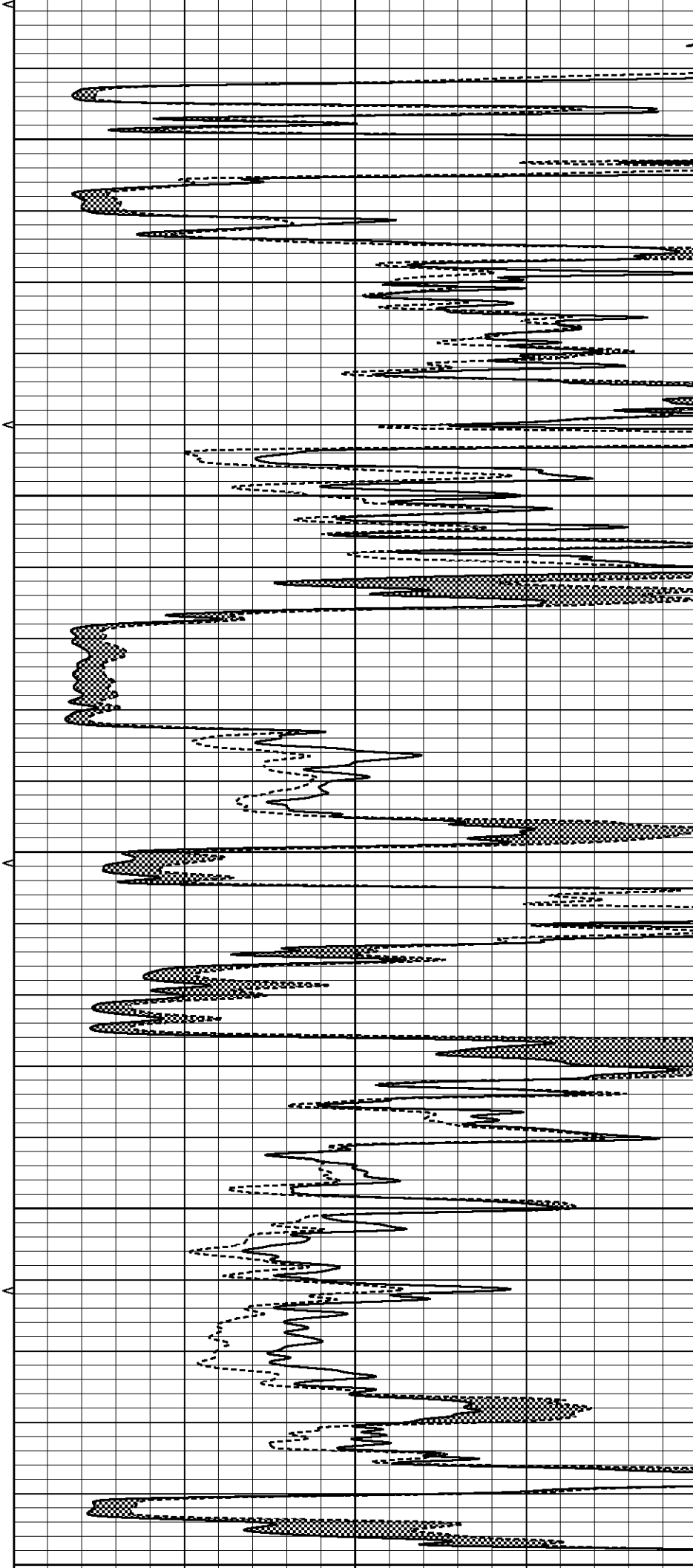
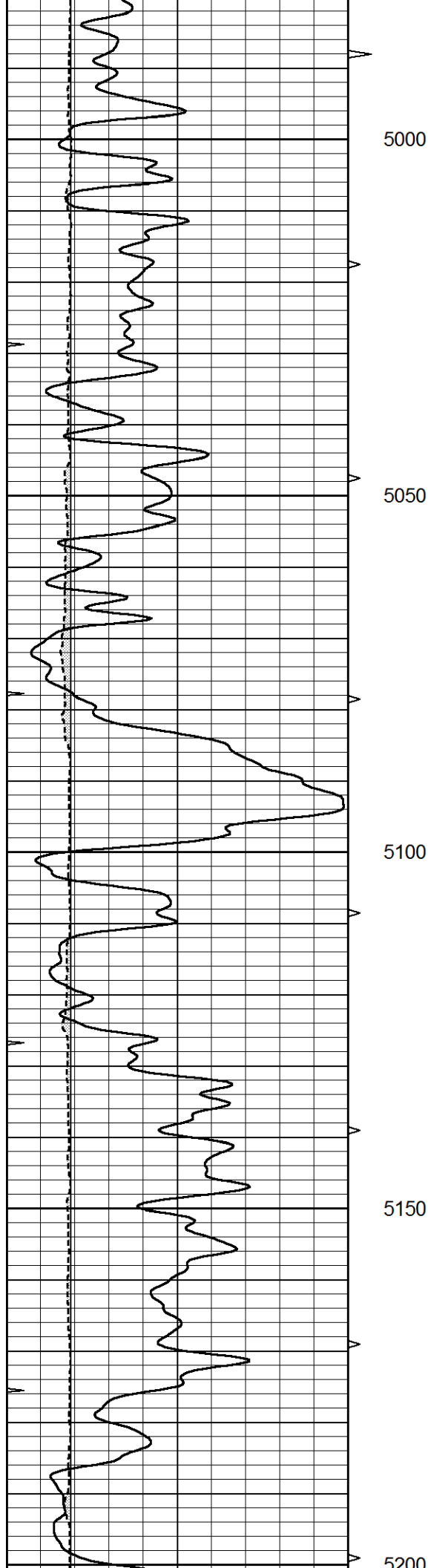


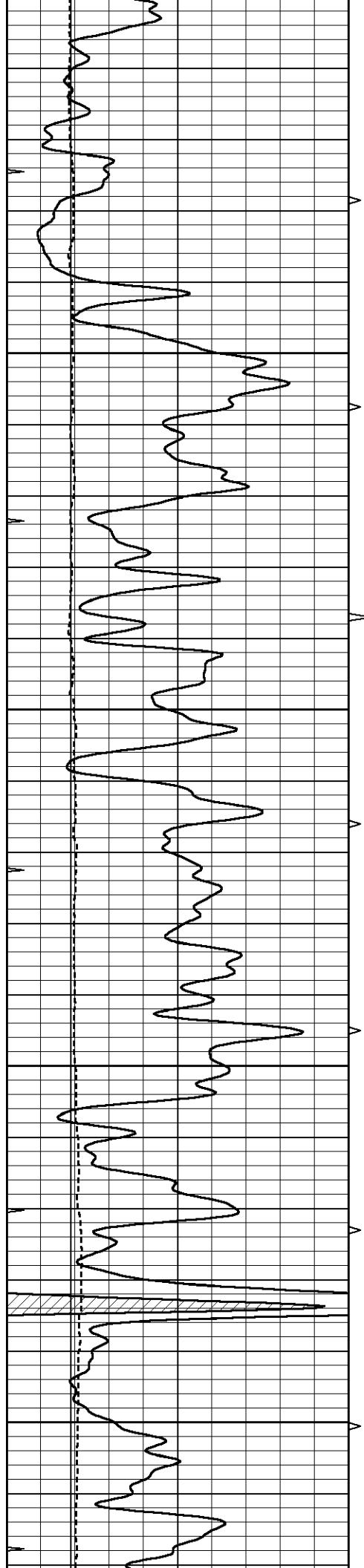
MAIN PASS

Database File	5887pe.db
Dataset Pathname	pass7MIC
Presentation Format	_micro
Dataset Creation	Sun Oct 17 10:51:04 2021
Charted by	Depth in Feet scaled 1:240

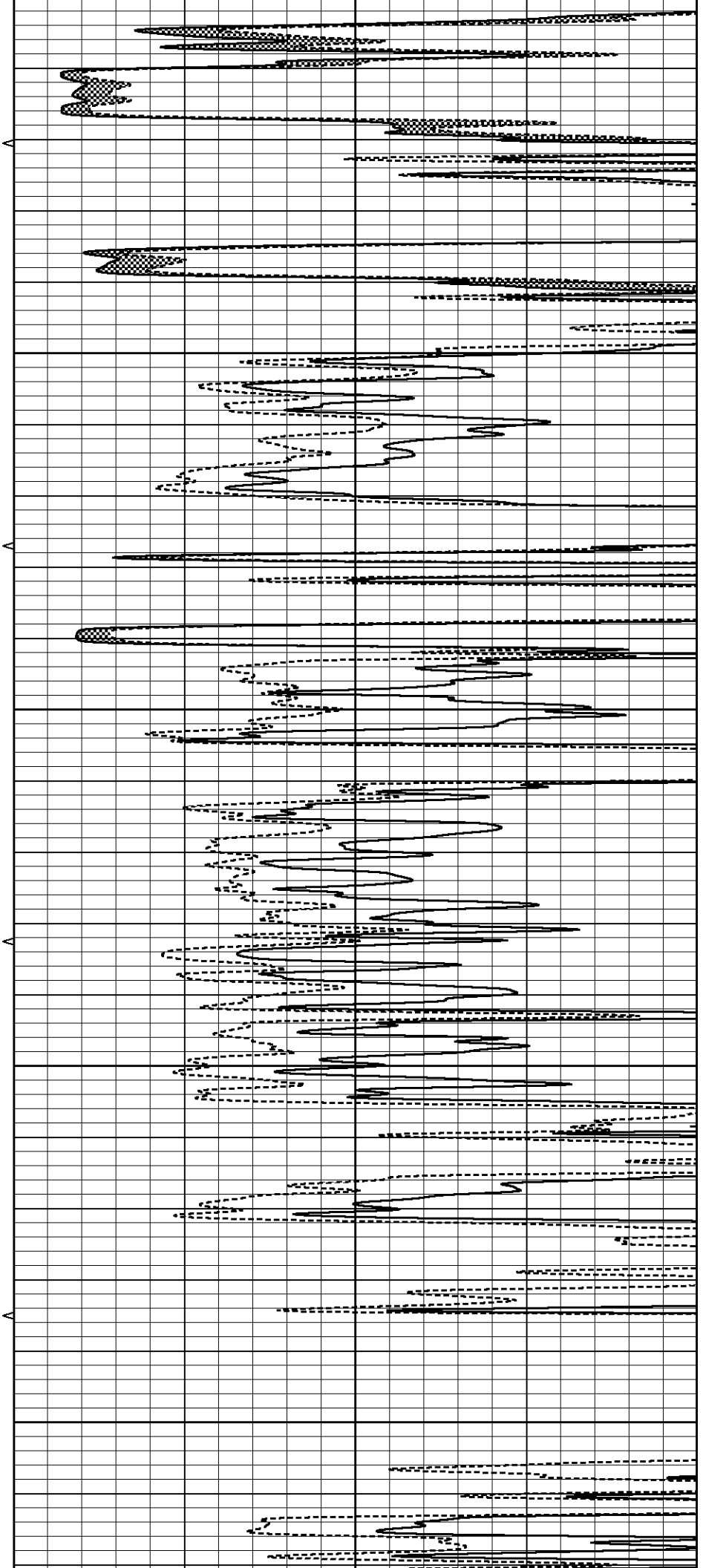
0	GAMMA RAY (GAPI)	150	ABHV	0	MEL1.5 (Ohm-m)	40
6	CALIPER (in)	16	10 (ft3)	0	MEL2.0 (Ohm-m)	40
0	MINMK	20	TBHV			
			0 (ft3)	10		

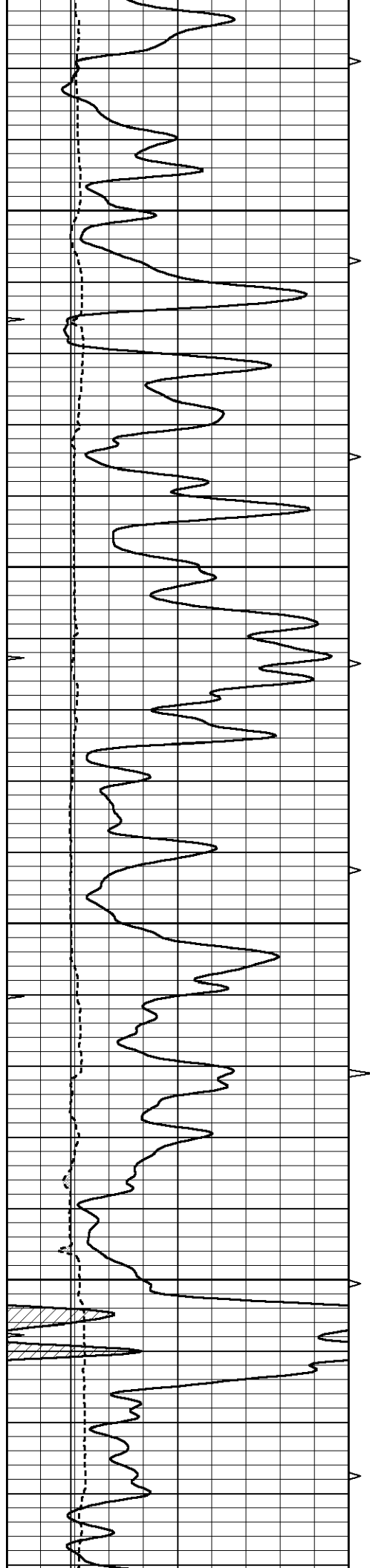






5200
5250
5300
5350
5400



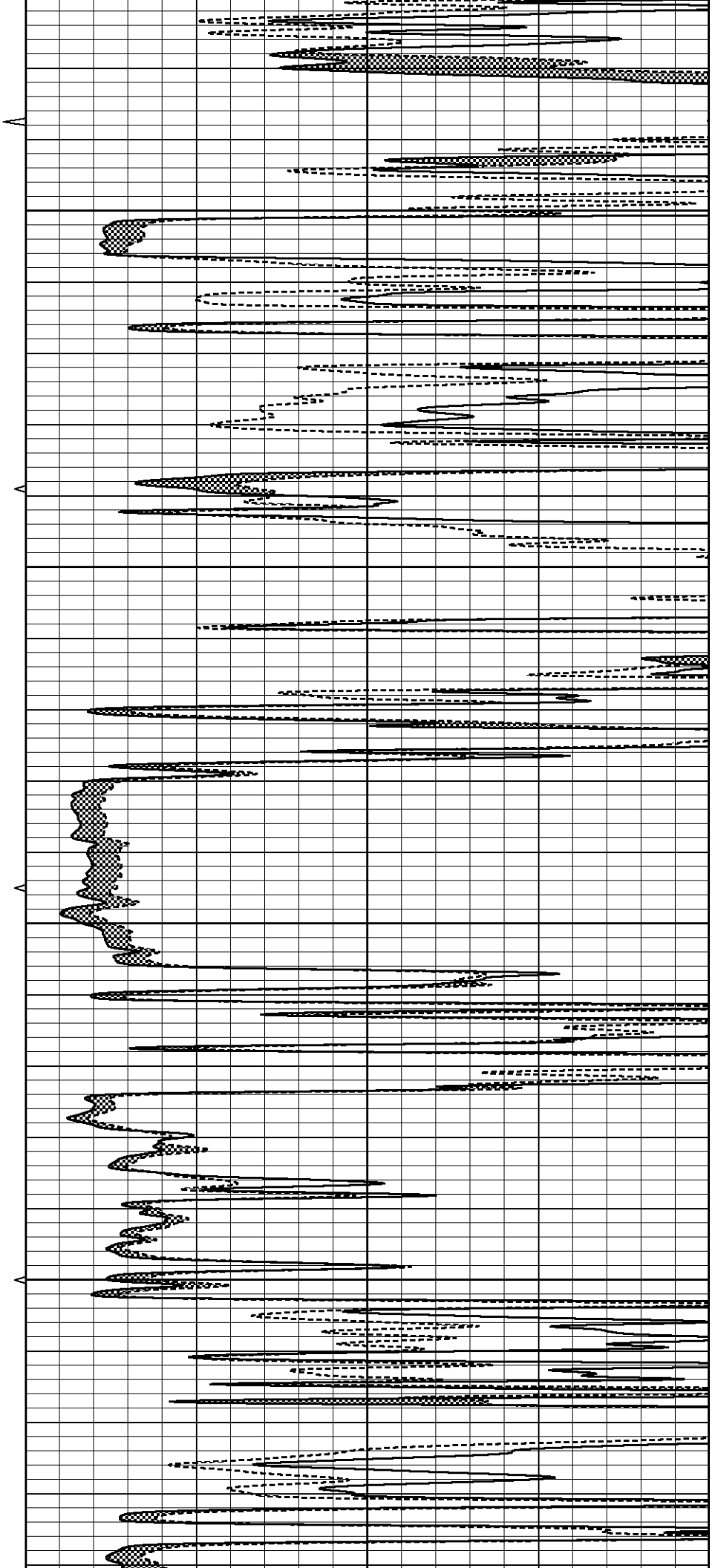


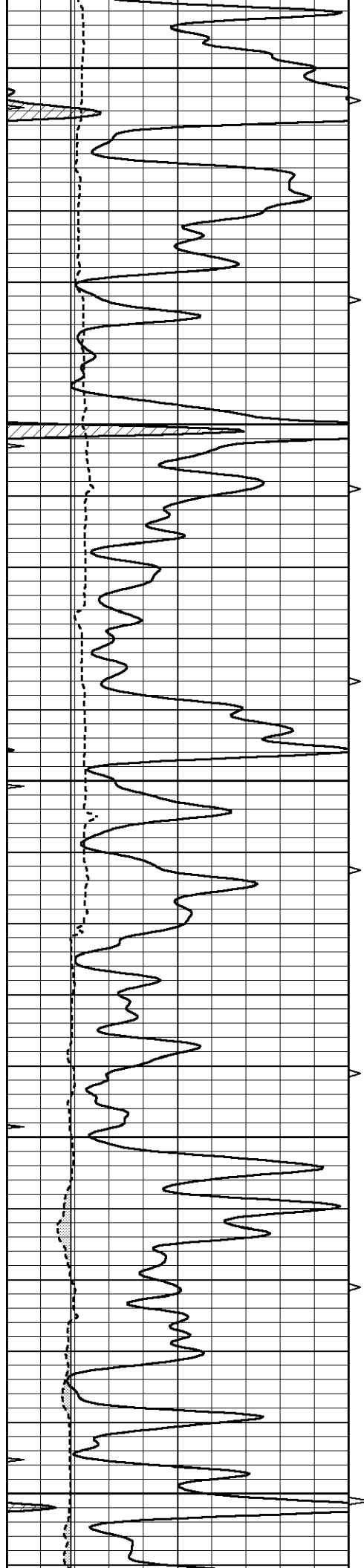
5450

5500

5550

5600





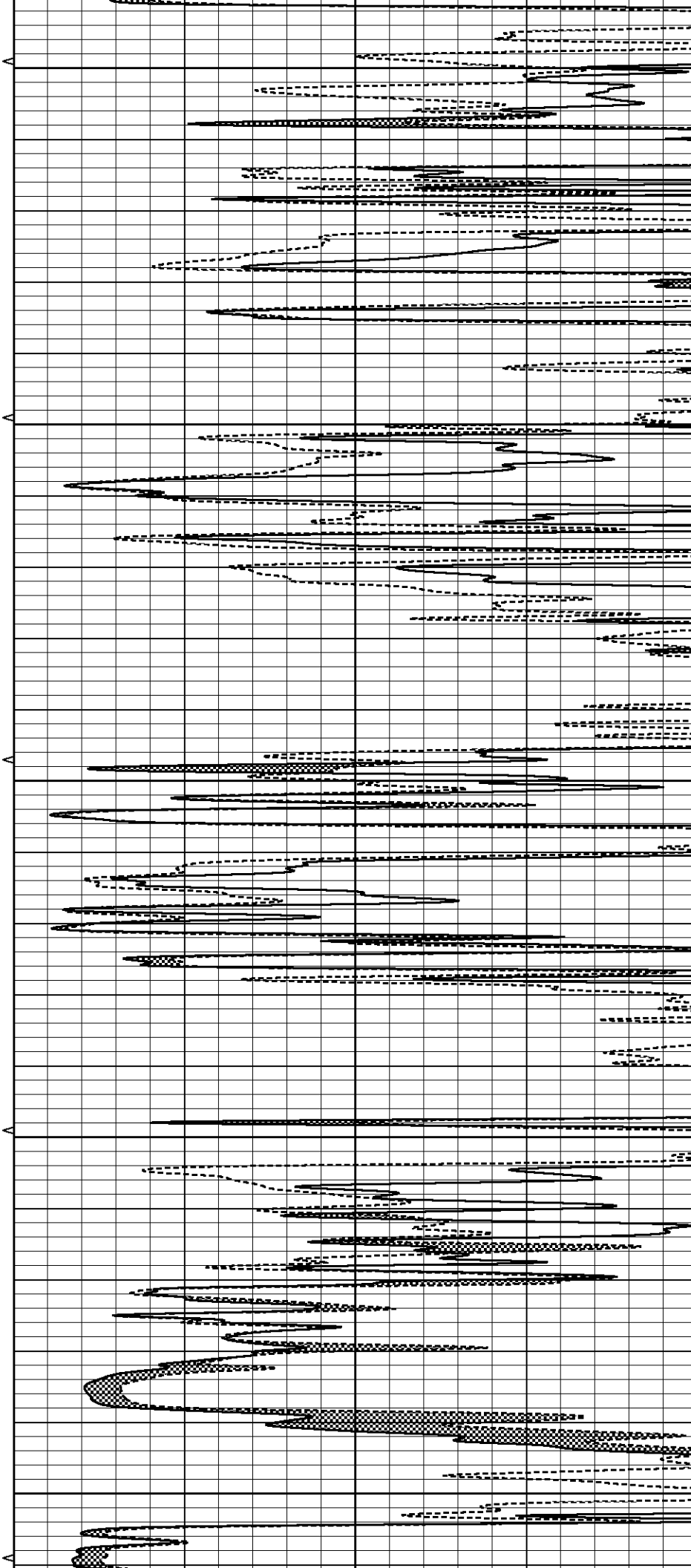
5650

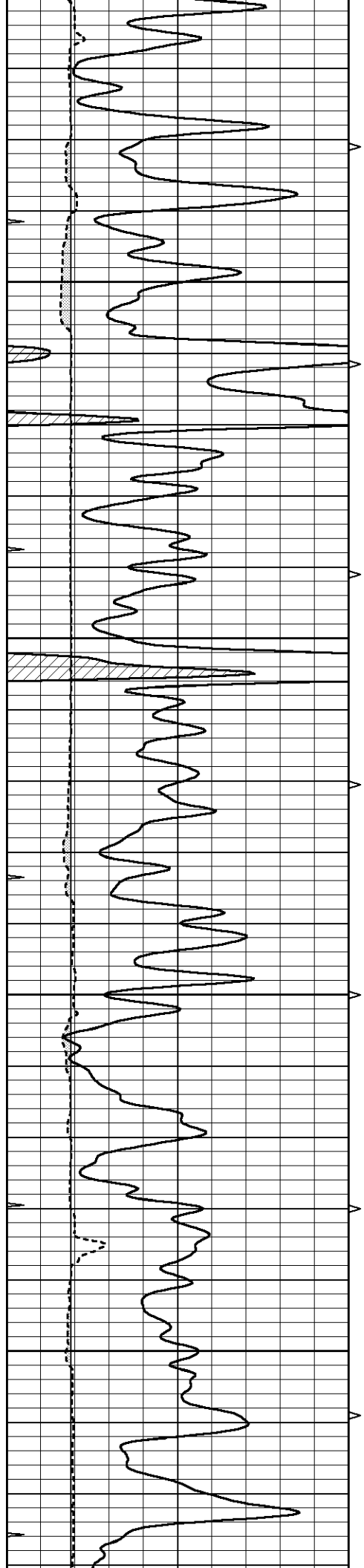
5700

5750

5800

5850



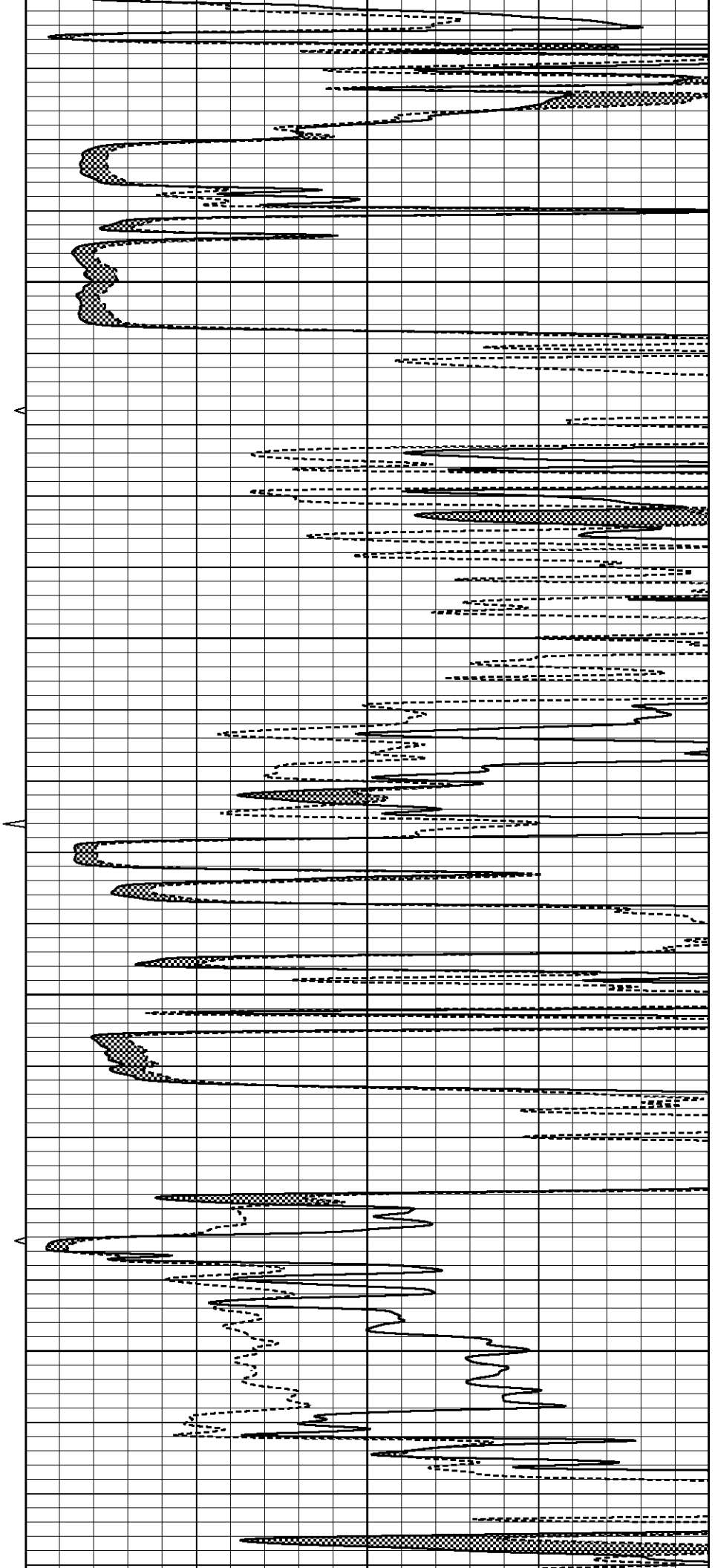


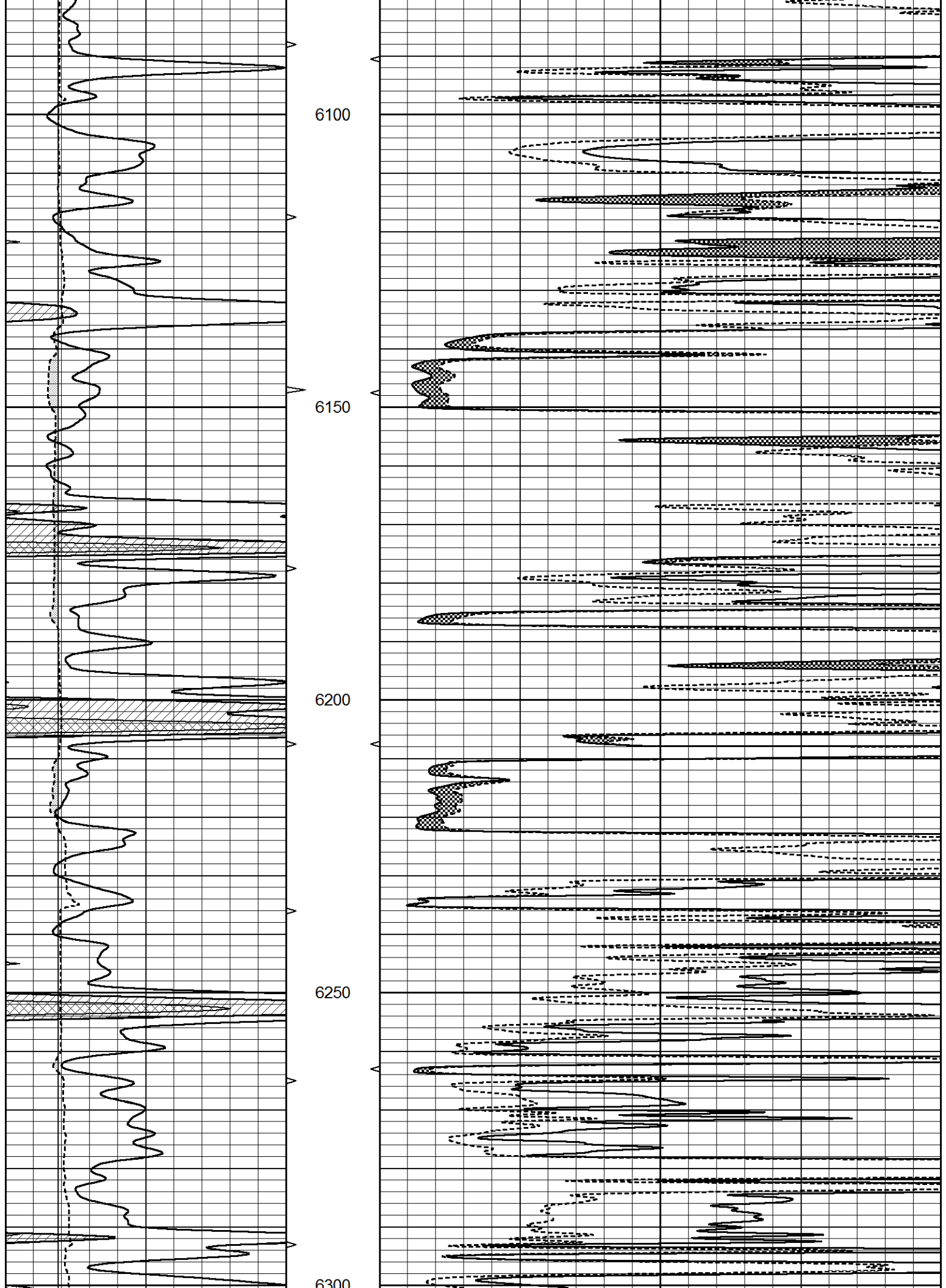
5900

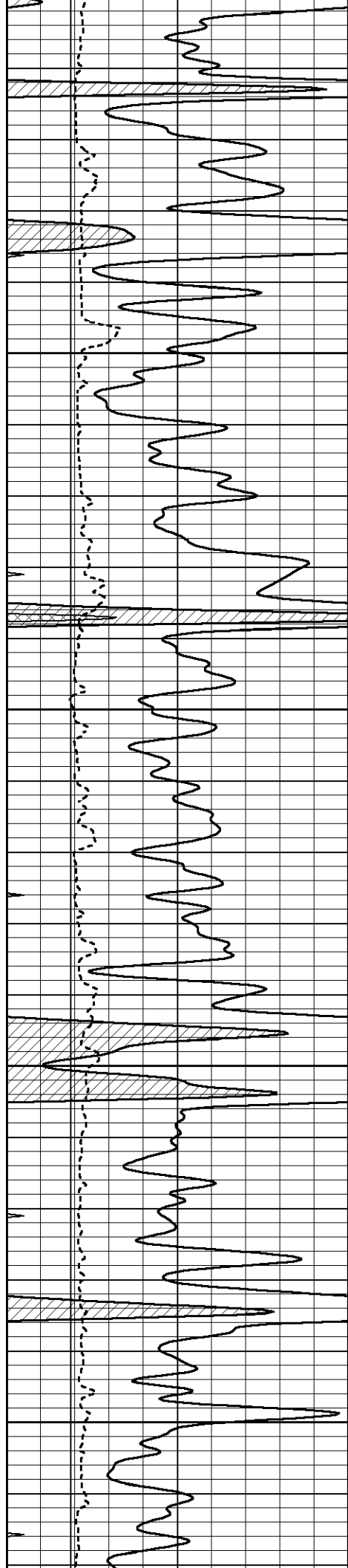
5950

6000

6050







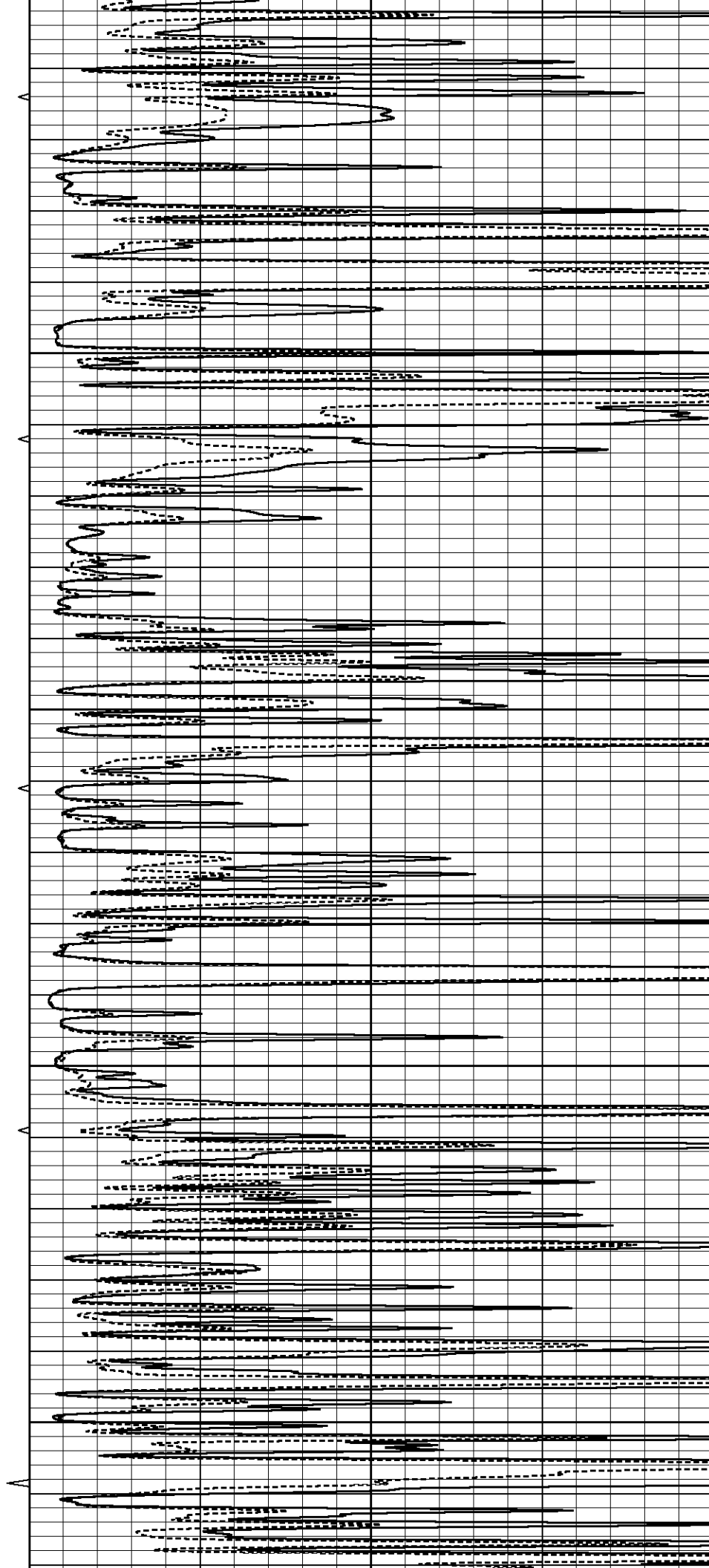
6300

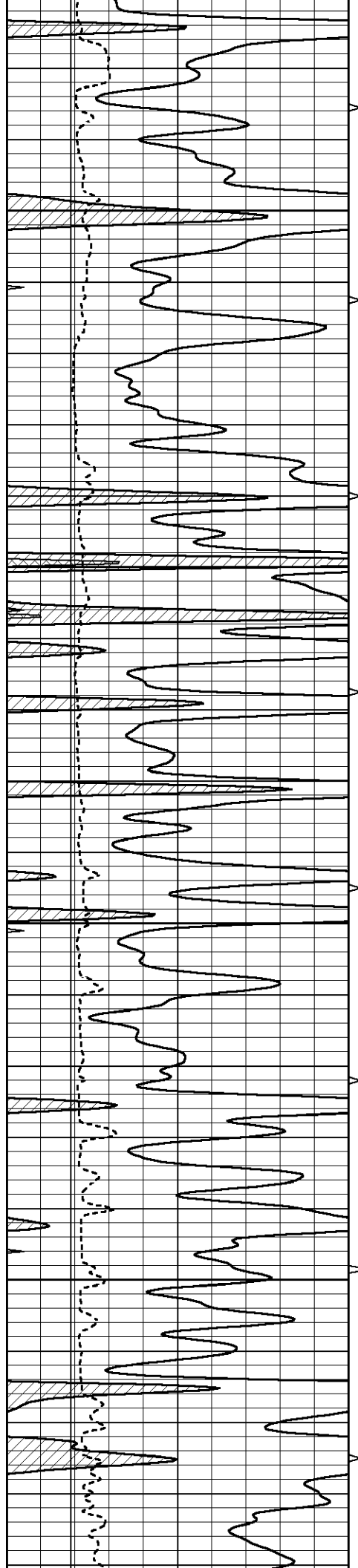
6350

6400

6450

6500



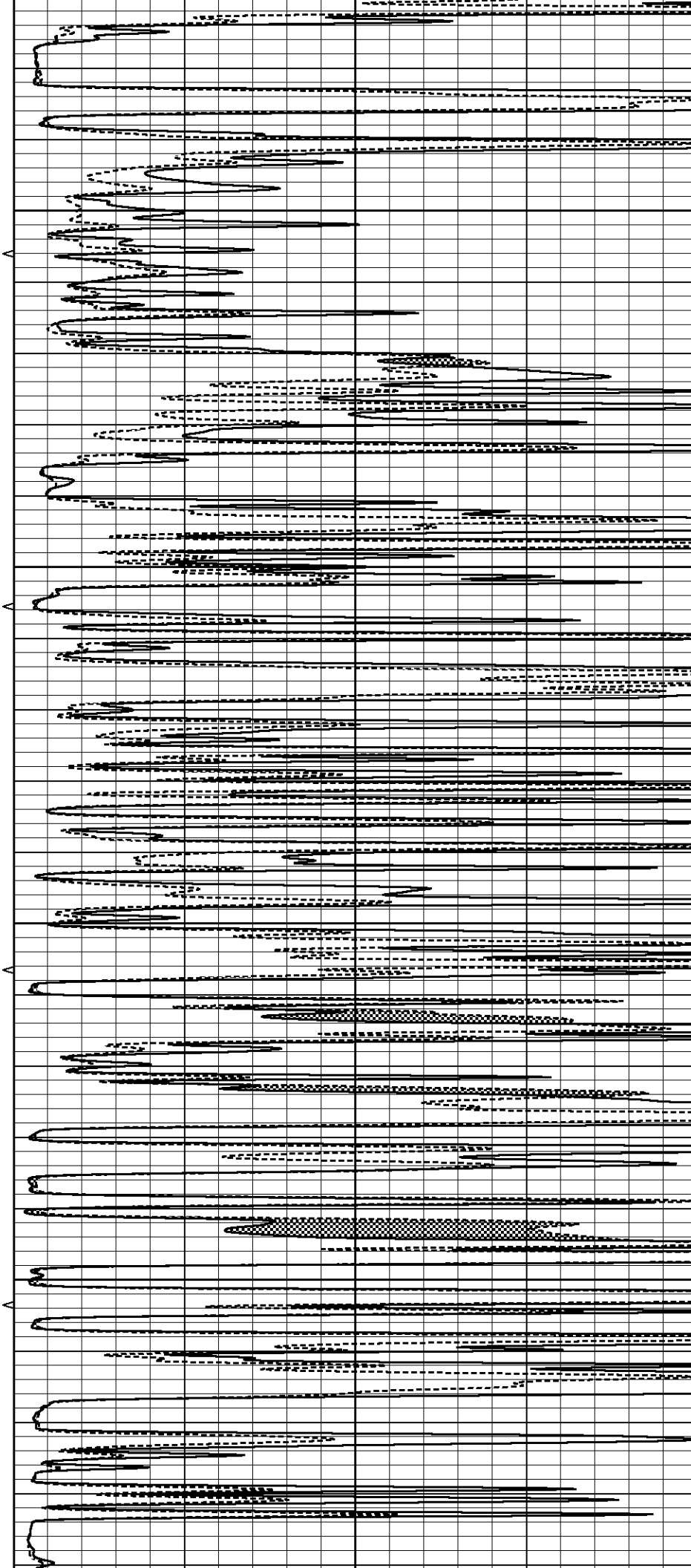


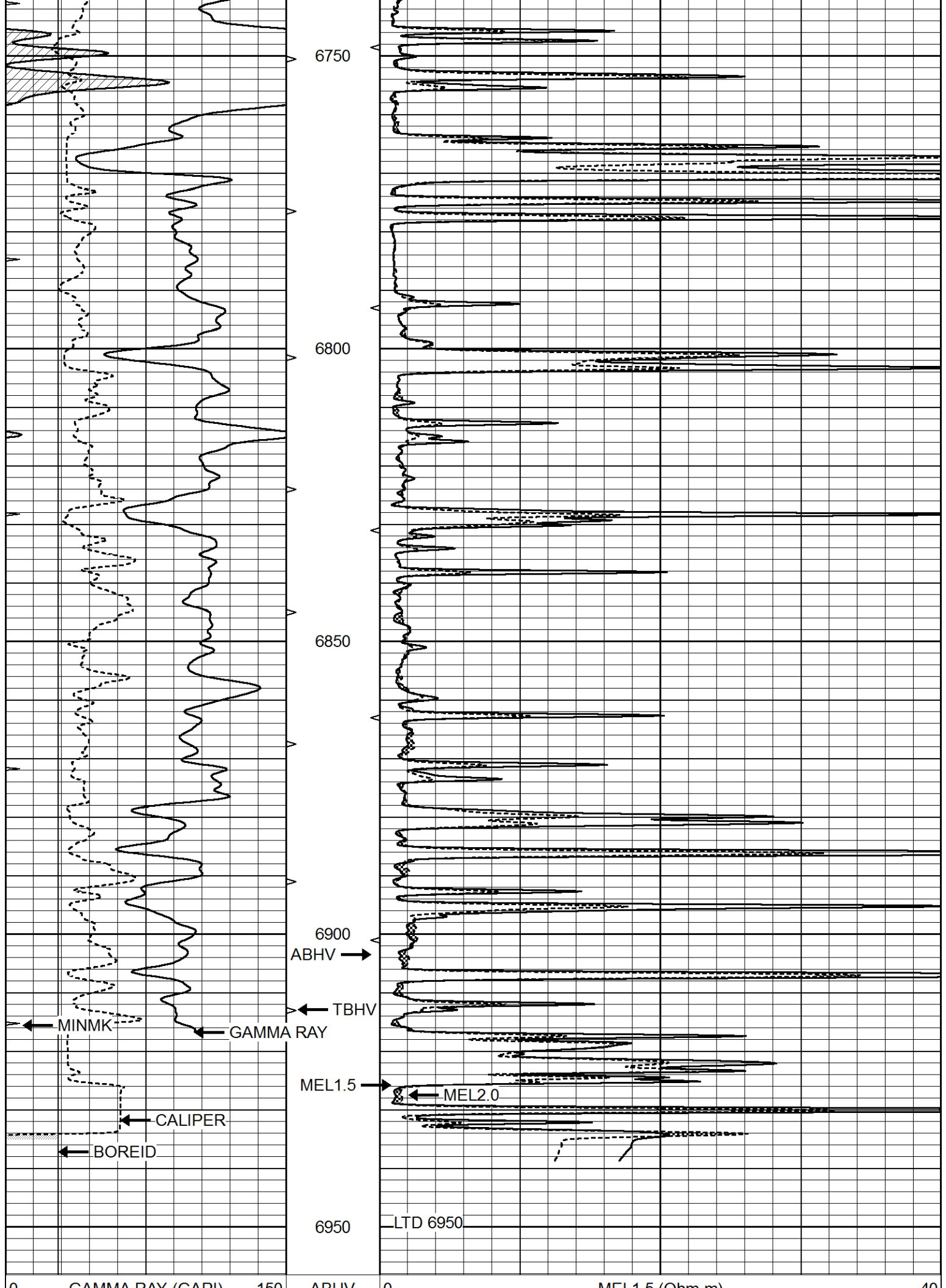
6550

6600

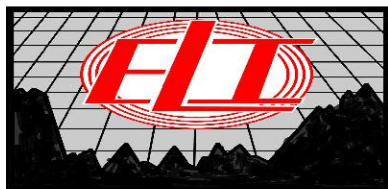
6650

6700





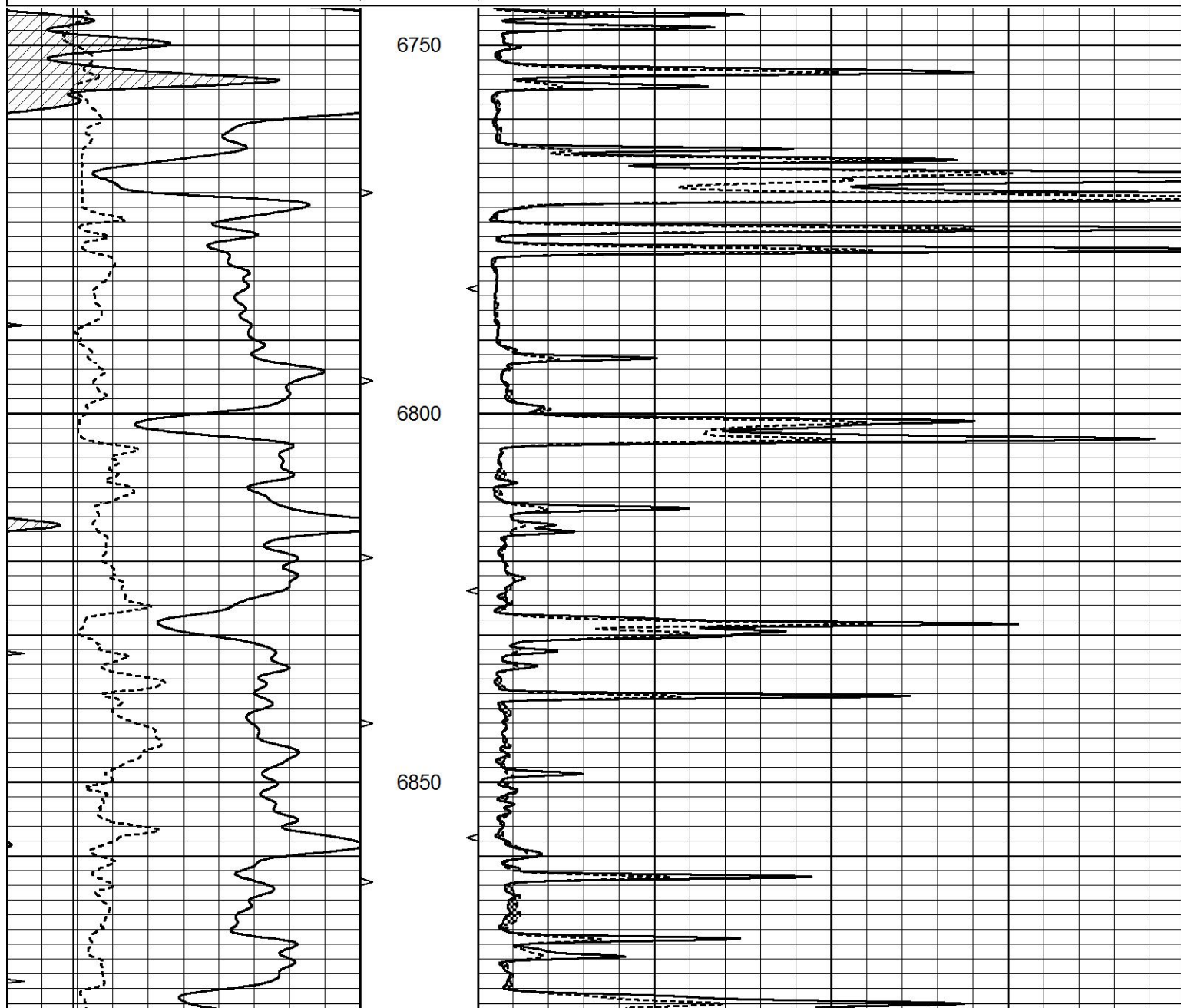
0	GAMMA RAY (GAPI)	150	ABHV	0	MEL1.5 (Ohm-m)	40
6	CALIPER (in)	16	10 (ft3)	0	MEL2.0 (Ohm-m)	40
0	MINMK	20	TBHV			
			0 (ft3)	10		

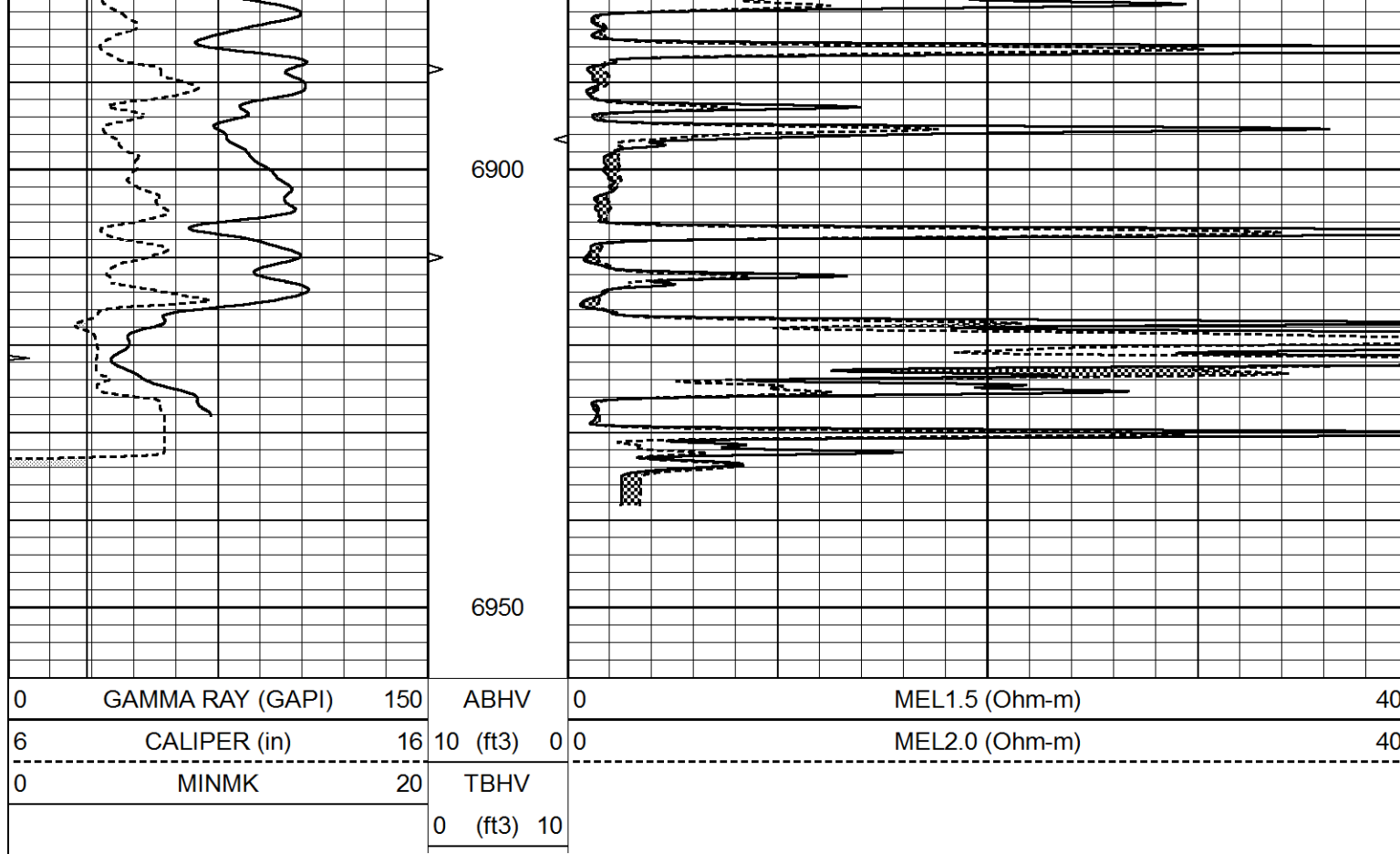


REPEAT SECTION

Database File 5887pe.db
 Dataset Pathname pass5.1
 Presentation Format _micro
 Dataset Creation Sun Oct 17 10:33:21 2021
 Charted by Depth in Feet scaled 1:240

0	GAMMA RAY (GAPI)	150	ABHV	0	MEL1.5 (Ohm-m)	40
6	CALIPER (in)	16	10 (ft3)	0	MEL2.0 (Ohm-m)	40
0	MINMK	20	TBHV			
			0 (ft3)	10		





Calibration Report			
Database File	5887pe.db		
Dataset Pathname	pass5.1		
Dataset Creation	Sun Oct 17 10:33:21 2021		
MICRO Calibration Report			
Serial Number:	Micro1		
Tool Model:	ProbeL		
Performed:	Thu Aug 05 13:03:33 2021		
Caliper Calibration:	Gain=2.815	Offset=7.252	
References	Low Cal	High Cal	
Readings	8.500	13.500	
	0.887	2.663	
1.5" Calibration:	Gain=36.134	Offset=-0.500	
References	Low Cal	High Cal	
Readings	0.000	20.000	
	0.004	0.832	
2" Calibration:	Gain=38.000	Offset=0.000	
References	Low Cal	High Cal	
Readings	0.000	20.000	
	0.022	0.793	
Gamma Ray Calibration Report			
Serial Number:	GR5		
Tool Model:	OPEN		
Performed:	Fri Oct 01 08:18:05 2021		
Calibrator Value:	1.0	GAPI	

Calibrator Value:	1.0	GAPI
Background Reading:	0.0	cps
Calibrator Reading:	1.0	cps
Sensitivity:	0.6000	GAPI/cps