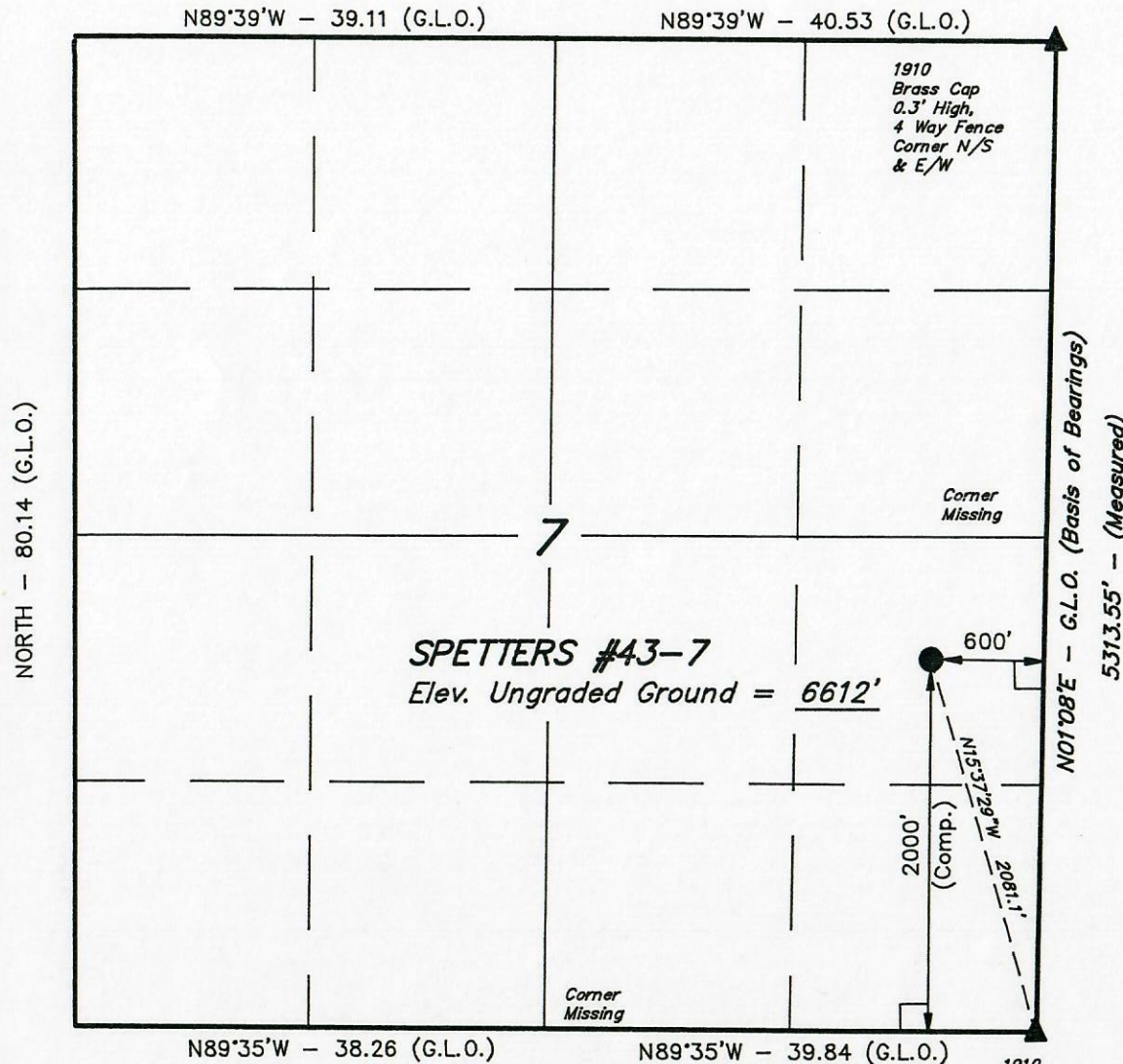


T8N, R90W, 6th P.M.

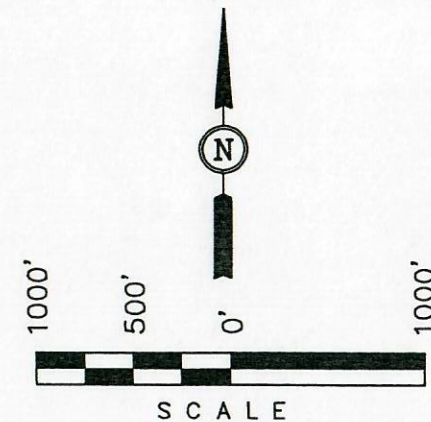
APACHE CORP.

Well Location, SPETTERS #43-7, located as shown in the NE 1/4 SE 1/4 of Section 7, T8N, R90W, 6th P.M. Moffat County, Colorado.



BASIS OF ELEVATION

SPOT ELEVATION AT THE SOUTHEAST CORNER OF SECTION 7, T8N, R90W, 6th P.M. TAKEN FROM THE CRAIG NE QUADRANGLE, COLORADO, MOFFAT COUNTY, 7.5 MINUTE QUAD. (TOPOGRAPHIC MAP) PUBLISHED BY THE UNITED STATES DEPARTMENT OF THE INTERIOR, GEOLOGICAL SURVEY. SAID ELEVATION IS MARKED AS BEING 6634 FEET.



CERTIFICATE

THIS IS TO CERTIFY THAT THE ABOVE PLAT WAS PREPARED FROM FIELD NOTES OF ACTUAL SURVEYS MADE BY ME OR UNDER MY SUPERVISION AND THAT THE SAME ARE TRUE AND CORRECT TO THE BEST OF MY KNOWLEDGE AND BELIEF.

Robert L. Kay
REGISTERED LAND SURVEYOR
REGISTRATION NO. 17492
STATE OF COLORADO

UINTAH ENGINEERING & LAND SURVEYING
85 SOUTH 200 EAST - VERNAL, UTAH 84078
(801) 789-1017

LEGEND:

- └ = 90° SYMBOL
- = PROPOSED WELL HEAD.
- ▲ = SECTION CORNERS LOCATED.

THERE ARE NO EXISTING IMPROVEMENTS WITHIN 200' OF THE PROPOSED WELL HEAD.

SURFACE USE OF LOCATION IS FARMING, VEGETATION CONSISTS MAINLY OF A GRAIN FIELD.

SCALE 1" = 1000'	DATE SURVEYED: 3-25-96	DATE DRAWN: 3-28-96
PARTY D.A. C.T. D.R.B.	REFERENCES G.L.O. PLAT	
WEATHER COOL	FILE APACHE CORP.	

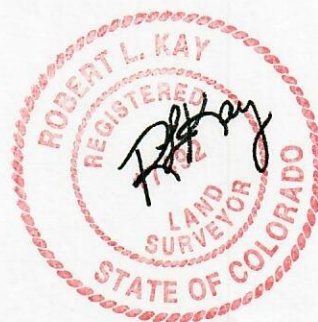
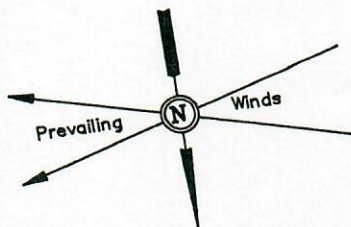
APACHE CORP.

LOCATION LAYOUT FOR

SPETTERS #43-7

SECTION 7, T8N, R90W, 6th P.M.

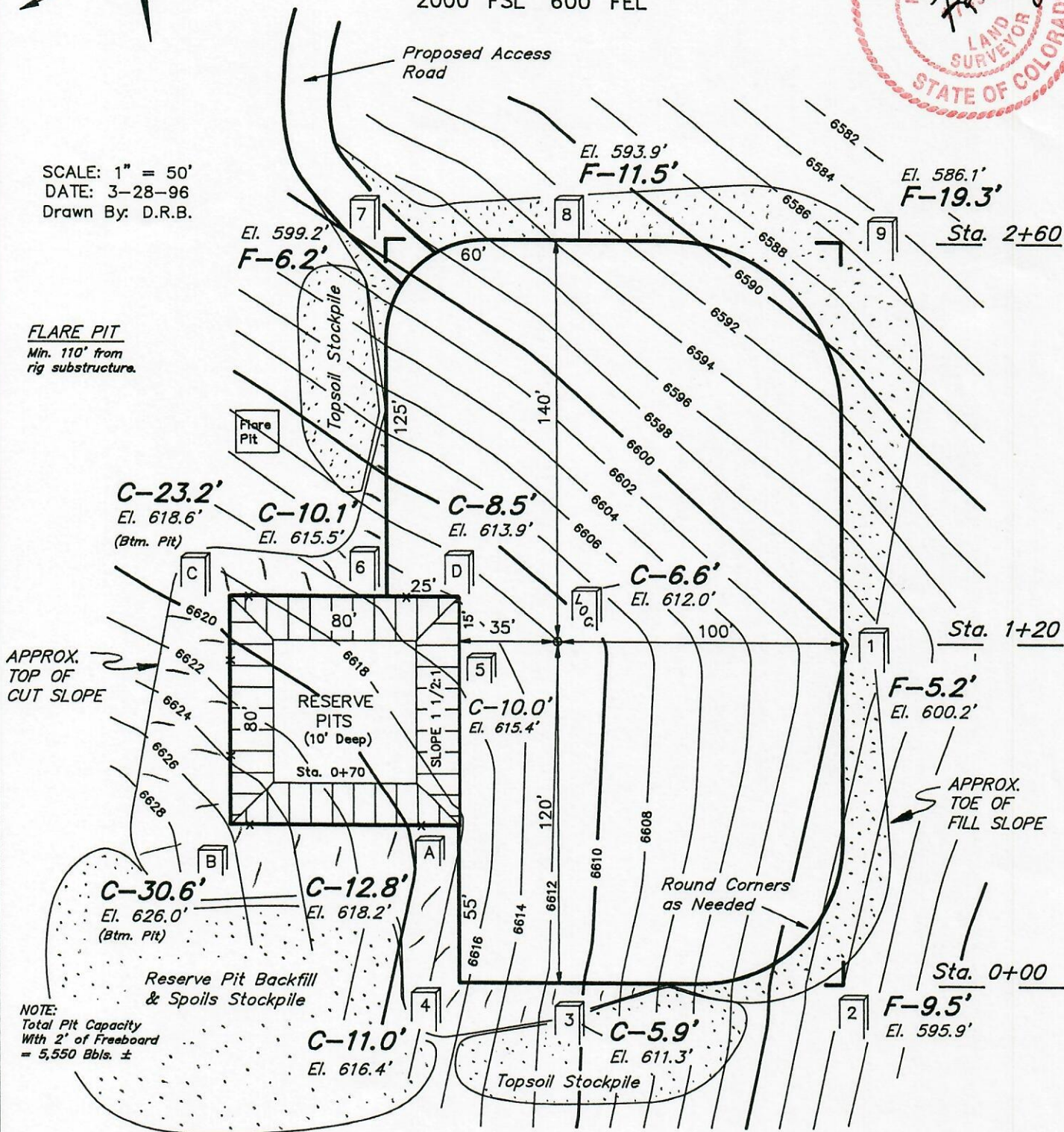
2000' FSL 600' FEL



SCALE: 1" = 50'
DATE: 3-28-96
Drawn By: D.R.B.

FLARE PIT

Min. 110' from
rig substructure.



Elev. Ungraded Ground at Location Stake = 6612.0'

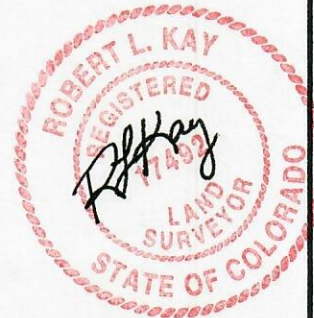
Elev. Graded Ground at Location Stake = 6605.4

UINTAH ENGINEERING & LAND SURVEYING
85 So. 200 East * Vernal, Utah 84078 * (801) 789-1017

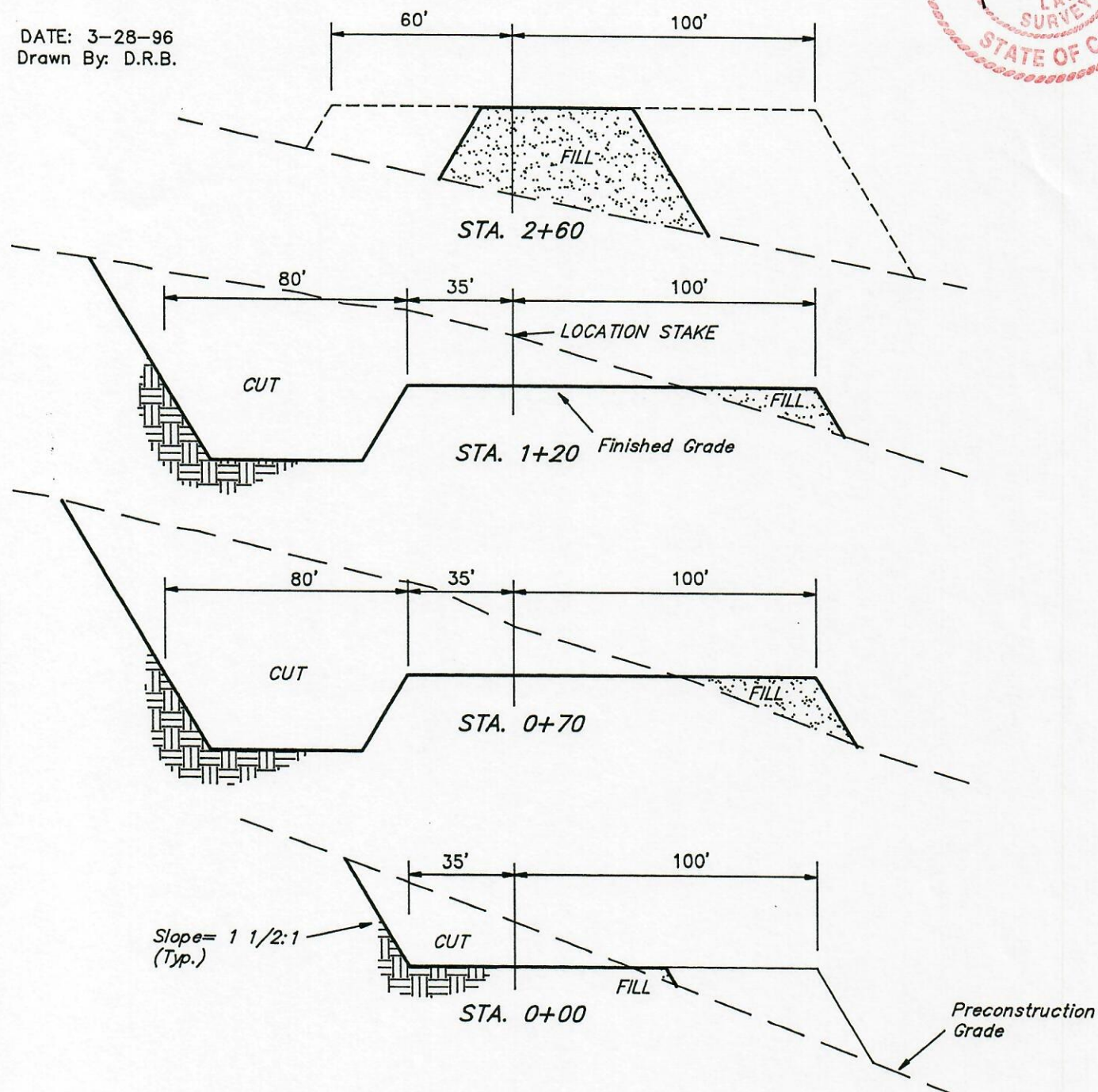
1" = 20'
X-Section
Scale
1" = 50'

APACHE CORP. LOCATION LAYOUT FOR

SPETTERS #43-7
SECTION 7, T8N, R90W, 6th P.M.
2000' FSL 600' FEL



DATE: 3-28-96
Drawn By: D.R.B.



APPROXIMATE YARDAGES

CUT
(6") Topsoil Stripping = 830 Cu. Yds.
Remaining Location = 9,290 Cu. Yds.
TOTAL CUT = 10,120 CU.YDS.
FILL = 8,070 CU.YDS.

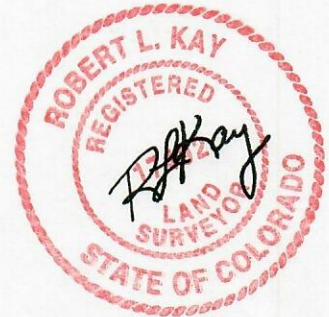
EXCESS MATERIAL AFTER
5% COMPACTION = 1,630 Cu. Yds.
Topsoil & Pit Backfill = 1,630 Cu. Yds.
(1/2 Pit Vol.)
EXCESS UNBALANCE = 0 Cu. Yds.
(After Rehabilitation)

UINTAH ENGINEERING & LAND SURVEYING
85 So. 200 East * Vernal, Utah 84078 * (801) 789-1017



APACHE CORP.
TYPICAL RIG LAYOUT FOR

SPETTERS #43-7
SECTION 7, T8N, R90W, 6th P.M.
2000' FSL 600' FEL



SCALE: 1" = 50'
DATE: 3-28-96
Drawn By: D.R.B.

FLARE PIT
Min. 110' from
rig substructure.

