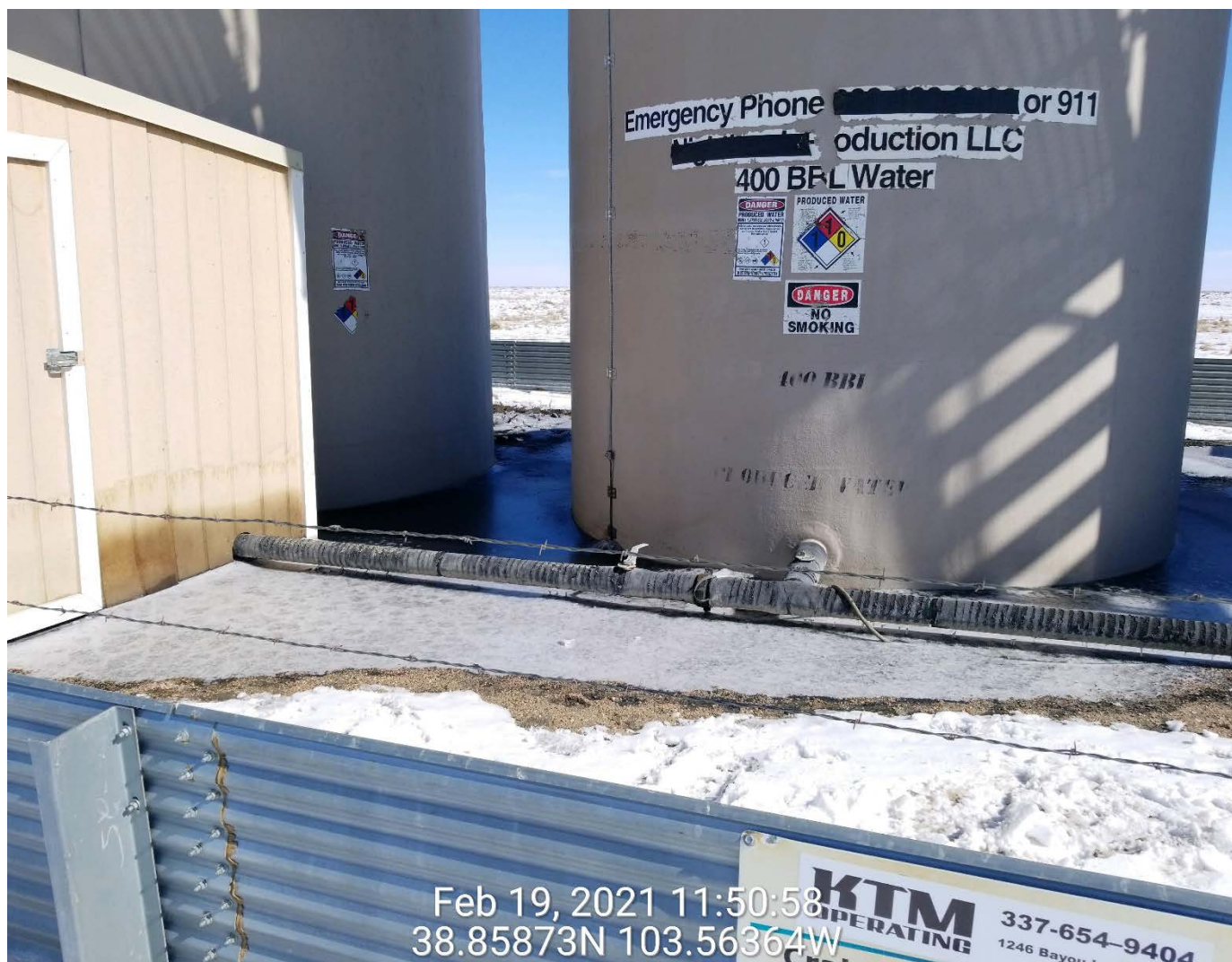


Location Name: Spill 479428 Location ID/API #: Craig 6-4 SWD



Location Name: Spill 479428 Location ID/API #: Craig 6-4 SWD



Spill occurred from burst pipe in tan building in left of photo.

Location Name: Spill 479428 Location ID/API #: Craig 6-4 SWD



Location Name: Spill 479428 Location ID/API #: Craig 6-4 SWD



Produced water frozen inside containment.

Location Name: Spill 479428 Location ID/API #: Craig 6-4 SWD



Feb 19, 2021 12:03:05
38.85858N 103.56381W



COLORADO
Oil & Gas Conservation
Commission
Department of Natural Resources

Produced water contained iron sulfide which caused black staining in spill area.

Location Name: Spill 479428 Location ID/API #: Craig 6-4 SWD



Source of spill was burst pipe pictured.

Location Name: Spill 479428 Location ID/API #: Craig 6-4 SWD



Source of spill was burst pipe pictured.

Location Name: Spill 479428 Location ID/API #: Craig 6-4 SWD



**Spill flowed outside containment. Area not covered in snow
is where produced water flowed.**

Location Name: Spill 479428 Location ID/API #: Craig 6-4 SWD



Spill flowed outside containment. Area not covered in snow
is where produced water flowed.

Location Name: Spill 479428 Location ID/API #: Craig 6-4 SWD



**Spill flowed outside containment. Area not covered in snow
is where produced water flowed.**