

CONFLUENCE RESOURCES



Location:	COLORADO	Slot:	SLOT#18 Desha 4-1-4L (620'FSL & 943'FWL, SEC.34)
Field:	WELD COUNTY (NAD83, TRUE NORTH)	Well:	Desha 4-1-4L
Facility:	SEC.34-T01N-R65W	Wellbore:	Desha 4-1-4L PWB
Plot reference wellpath is Desha 4-1-4L PWP RevA.0		Grid System: NAD83 / Lambert Colorado SP, Northern Zone (501), US feet	
True vertical depths are referenced to Rig (20.5) (RT)		North Reference: True north	
Reference wellpath measured depths are referenced to Rig (20.5) (RT)		Scale: True distance	
Rig (20.5) (RT) to Mean Sea Level: 5160.5 feet		Coordinates are in feet referenced to Slot	
Mean Sea Level to Mud line (At Slot: SLOT#18 Desha 4-1-4L (620'FSL & 943'FWL, SEC.34)): 0 feet		Depths are in feet	
Offset wellpath MDs are referenced to each path's default MD datum		Created by: painstr on 2020-10-07, Database: WA_Denver	

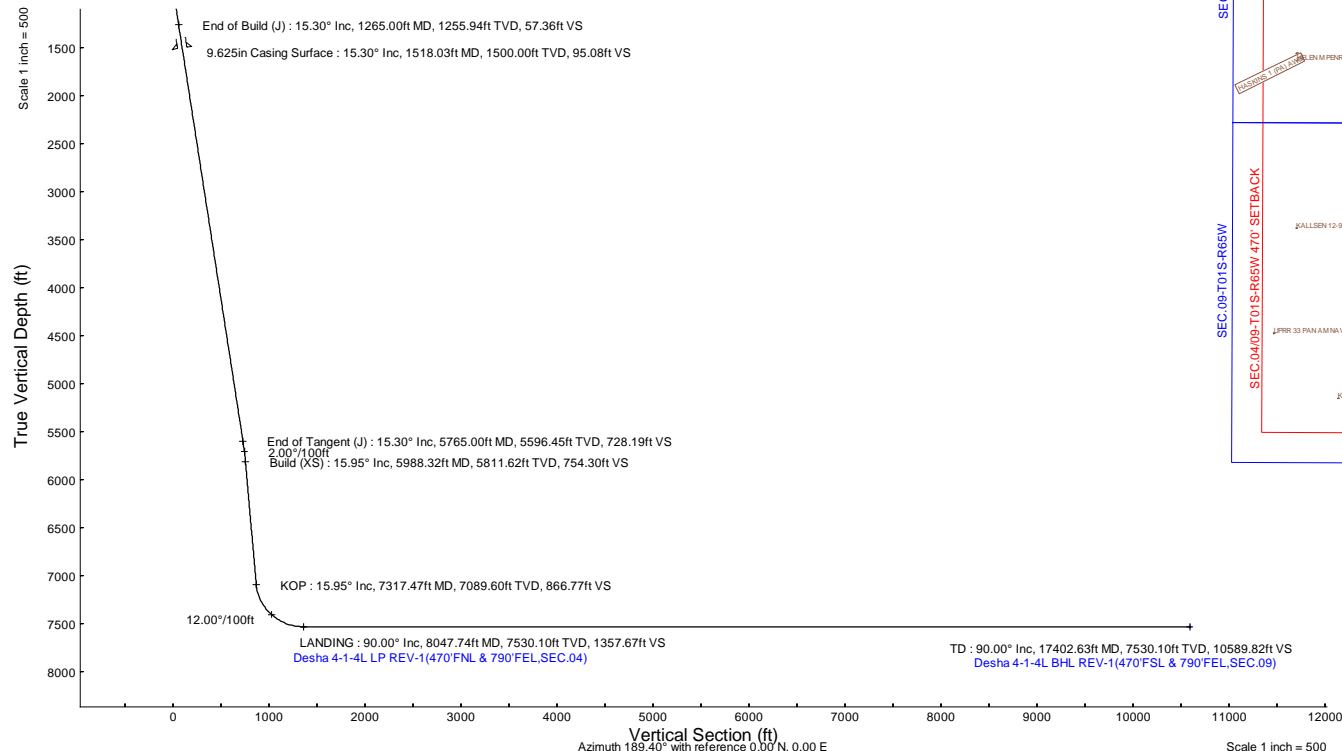
Location Information					
Facility Name		Grid East (US ft)	Grid North (US ft)	Latitude	Longitude
SEC.34-T01N-R65W		3236186.141	1244789.256	40°00'8.1000"N	104°39'24.8400"W
Slot		Grid East (US ft)	Grid North (US ft)	Latitude	Longitude
SLOT#18 Desha 4-1-4L (620'FSL & 943'FWL, SEC.34)		3236387.836	1244791.175	40°00'8.1000"N	104°39'22.2480"W
Rig (20.5) (RT) to Mud line (At Slot: SLOT#18 Desha 4-1-4L (620'FSL & 943'FWL, SEC.34))		0.00		5160.5R	
Mean Sea Level to Mud line (At Slot: SLOT#18 Desha 4-1-4L (620'FSL & 943'FWL, SEC.34))		201.71		0R	
Rig (20.5) (RT) to Mean Sea Level				5160.5R	

Survey Program					
Start MD (ft)	End MD (ft)	Tool	Model	Log Name/Comment	Wellbore
20.50	1518.03	BH NavTrak (2019)	BH NavTrak (2019) (Axial)		Desha 4-1-4L PWB
1518.03	17444.31	BH AutoTrak Curve/xpress (2019)	BH AutoTrak Curve/xpress (2019) (Short spacing)		Desha 4-1-4L PWB

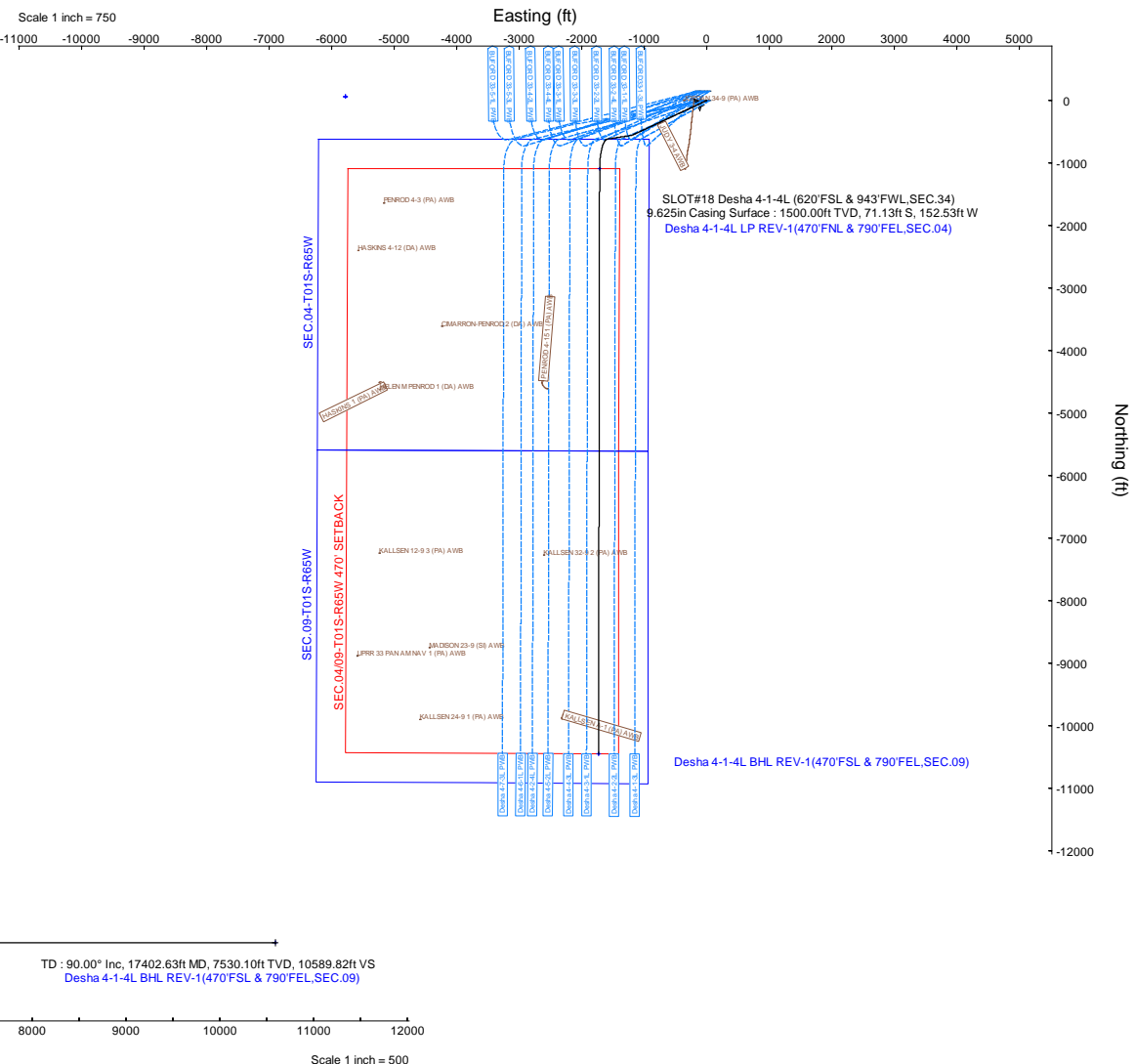
Hole and Casing Sections					
Name	Start MD (ft)	End MD (ft)	Interval (ft)	Start TVD (ft)	End TVD (ft)
9.625in Casing Surface	20.50	1518.03	1497.53	20.50	1500.00

Bottom Hole Location					
MD (ft)	Inc (°)	Az (°)	TVD (ft)	Local N (ft)	Local E (ft)
17402.63	90.000	180.107	7530.10	-10447.68	-1729.28

Targets					
Name	MD (ft)	TVD (ft)	Local N (ft)	Local E (ft)	Grid East (US ft)
SEC.04-T01S-R65W	N/A	62.00	62.60	-5776.77	3230610.94
SEC.0409-T01S-R65W 470' SETBACK	N/A	62.00	62.60	-5776.77	3230610.94
SEC.09-T01S-R65W	N/A	62.00	62.60	-5776.77	3230610.94
Desha 4-1-4L BHL REV-1(470'FSL & 790'FEL, SEC.09)	17402.63	7530.10	-10447.68	-1729.28	3234758.11
Desha 4-1-4L LP REV-1(470'FNL & 790'FEL, SEC.04)	8047.74	7530.10	-1092.80	-1711.82	3234686.55



Well Profile Data								
Design Comment	MD (ft)	Inc (°)	Az (°)	TVD (ft)	Local N (ft)	Local E (ft)	DLS (°/100ft)	VS (ft)
Tie On	20.50	0.000	245.000	20.50	0.00	0.00	0.00	0.00
End of Tangent	500.00	0.000	245.000	500.00	0.00	0.00	0.00	0.00
End of Build (J)	1265.00	15.300	245.000	1255.94	-42.91	-92.02	2.00	57.36
End of Tangent (J)	5765.00	15.300	245.000	5596.45	-544.74	-1168.20	0.00	728.19
Build (XS)	5988.32	15.950	261.463	5811.62	-561.76	-1225.27	2.00	754.30
KOP	7317.47	15.950	261.463	7089.60	-615.98	-1586.47	0.00	866.77
LANDING	8047.74	90.000	180.107	7530.10	-1092.80	-1711.82	12.00	1357.67
TD	17402.63	90.000	180.107	7530.10	-10447.68	-1729.28	0.00	10589.82



Planned Wellpath Report

Desha 4-1-4L PWP Rev-A.0

Page 1 of 7

REFERENCE WELLPATH IDENTIFICATION

Operator	CONFLUENCE RESOURCES	Well	Desha 4-1-4L
Field	WELD COUNTY (NAD83, TRUE NORTH)	API/Legal	
Facility	SEC.34-T01N-R65W	Wellbore	Desha 4-1-4L PWB
Slot	SLOT#18 Desha 4-1-4L (620'FSL & 943'FWL,SEC.34)		

REPORT SETUP INFORMATION

Projection System	NAD83 / Lambert Colorado SP, Northern Zone (501), US feet	Software System	WellArchitect® 6.0
North Reference	True	User	Painsetr
Scale	0.999966	Report Generated	10/7/2020 at 1:34:26 PM
Convergence at slot	0.55° East	Database	WA_Denver

WELLPATH LOCATION

	Local coordinates		Grid coordinates		Geographic coordinates	
	North[ft]	East[ft]	Easting[US ft]	Northing[US ft]	Latitude	Longitude
Slot Location	0.00	201.71	3236387.84	1244791.18	40.0022500°	-104.6561800°
Facility Reference Pt			3236186.14	1244789.26	40.0022500°	-104.6569000°
Field Reference Pt			3230456.90	1245096.09	40.0032400°	-104.6773400°

WELLPATH DATUM

Calculation method	Minimum curvature	Rig (20.5') (RT) to Facility Vertical Datum	5160.50ft
Horizontal Reference Pt	Slot	Rig (20.5') (RT) to Mean Sea Level	5160.50ft
Vertical Reference Pt	Rig (20.5') (RT)	Rig (20.5') (RT) to Mud Line at Slot (SLOT#18 Desha 4-1-4L (620'FSL & 943'FWL,SEC.34))	5160.50ft
MD Reference Pt	Rig (20.5') (RT)	Section Origin	N 0.00, E 0.00 ft
Field Vertical Reference	Mean Sea Level	Section Azimuth	189.40°

Planned Wellpath Report

Desha 4-1-4L PWP Rev-A.0

Page 2 of 7

REFERENCE WELLPATH IDENTIFICATION

Operator	CONFLUENCE RESOURCES	Well	Desha 4-1-4L
Field	WELD COUNTY (NAD83, TRUE NORTH)	API/Legal	
Facility	SEC.34-T01N-R65W	Wellbore	Desha 4-1-4L PWB
Slot	SLOT#18 Desha 4-1-4L (620'FSL & 943'FWL,SEC.34)		

WELLPATH DATA (182 stations) † = interpolated, ‡ = extrapolated station

MD [ft]	Inclination [°]	Azimuth [°]	TVD [ft]	Vert Sect [ft]	North [ft]	East [ft]	Grid East [US ft]	Grid North [US ft]	Latitude	Longitude	DLS [°/100ft]	Comments
0.00†	0.000	245.000	0.00	0.00	0.00	0.00	3236387.84	1244791.17	40.0022500	-104.6561800	0.00	
20.50	0.000	245.000	20.50	0.00	0.00	0.00	3236387.84	1244791.17	40.0022500	-104.6561800	0.00	Tie On
120.50†	0.000	245.000	120.50	0.00	0.00	0.00	3236387.84	1244791.17	40.0022500	-104.6561800	0.00	
220.50†	0.000	245.000	220.50	0.00	0.00	0.00	3236387.84	1244791.17	40.0022500	-104.6561800	0.00	
320.50†	0.000	245.000	320.50	0.00	0.00	0.00	3236387.84	1244791.17	40.0022500	-104.6561800	0.00	
420.50†	0.000	245.000	420.50	0.00	0.00	0.00	3236387.84	1244791.17	40.0022500	-104.6561800	0.00	
500.00	0.000	245.000	500.00	0.00	0.00	0.00	3236387.84	1244791.17	40.0022500	-104.6561800	0.00	End of Tangent
520.50†	0.410	245.000	520.50	0.04	-0.03	-0.07	3236387.77	1244791.14	40.0022499	-104.6561802	2.00	
620.50†	2.410	245.000	620.46	1.43	-1.07	-2.30	3236385.55	1244790.08	40.0022471	-104.6561882	2.00	
720.50†	4.410	245.000	720.28	4.79	-3.58	-7.69	3236380.18	1244787.52	40.0022402	-104.6562074	2.00	
820.50†	6.410	245.000	819.83	10.12	-7.57	-16.23	3236371.68	1244783.45	40.0022292	-104.6562379	2.00	
920.50†	8.410	245.000	918.99	17.40	-13.02	-27.92	3236360.04	1244777.89	40.0022143	-104.6562797	2.00	
1020.50†	10.410	245.000	1017.64	26.64	-19.93	-42.74	3236345.29	1244770.84	40.0021953	-104.6563325	2.00	
1120.50†	12.410	245.000	1115.66	37.82	-28.29	-60.66	3236327.44	1244762.31	40.0021723	-104.6563965	2.00	
1220.50†	14.410	245.000	1212.93	50.92	-38.09	-81.68	3236306.52	1244752.31	40.0021454	-104.6564716	2.00	
1265.00	15.300	245.000	1255.94	57.36	-42.91	-92.02	3236296.23	1244747.39	40.0021322	-104.6565085	2.00	End of Build (J)
1320.50†	15.300	245.000	1309.47	65.64	-49.10	-105.30	3236283.02	1244741.08	40.0021152	-104.6565558	0.00	
1420.50†	15.300	245.000	1405.93	80.54	-60.25	-129.21	3236259.21	1244729.70	40.0020846	-104.6566412	0.00	
1520.50†	15.300	245.000	1502.39	95.45	-71.40	-153.13	3236235.40	1244718.32	40.0020540	-104.6567266	0.00	
1620.50†	15.300	245.000	1598.84	110.36	-82.56	-177.04	3236211.60	1244706.94	40.0020234	-104.6568119	0.00	
1720.50†	15.300	245.000	1695.30	125.26	-93.71	-200.96	3236187.79	1244695.56	40.0019928	-104.6568973	0.00	
1820.50†	15.300	245.000	1791.75	140.17	-104.86	-224.87	3236163.98	1244684.18	40.0019622	-104.6569827	0.00	
1920.50†	15.300	245.000	1888.21	155.08	-116.01	-248.79	3236140.17	1244672.81	40.0019315	-104.6570680	0.00	
2020.50†	15.300	245.000	1984.66	169.99	-127.16	-272.70	3236116.37	1244661.43	40.0019009	-104.6571534	0.00	
2120.50†	15.300	245.000	2081.12	184.89	-138.31	-296.62	3236092.56	1244650.05	40.0018703	-104.6572388	0.00	
2220.50†	15.300	245.000	2177.58	199.80	-149.47	-320.53	3236068.75	1244638.67	40.0018397	-104.6573241	0.00	
2320.50†	15.300	245.000	2274.03	214.71	-160.62	-344.45	3236044.95	1244627.29	40.0018091	-104.6574095	0.00	
2420.50†	15.300	245.000	2370.49	229.62	-171.77	-368.36	3236021.14	1244615.91	40.0017785	-104.6574948	0.00	
2520.50†	15.300	245.000	2466.94	244.52	-182.92	-392.28	3235997.33	1244604.54	40.0017479	-104.6575802	0.00	
2620.50†	15.300	245.000	2563.40	259.43	-194.07	-416.19	3235973.53	1244593.16	40.0017172	-104.6576656	0.00	
2720.50†	15.300	245.000	2659.85	274.34	-205.22	-440.11	3235949.72	1244581.78	40.0016866	-104.6577509	0.00	
2820.50†	15.300	245.000	2756.31	289.24	-216.38	-464.02	3235925.91	1244570.40	40.0016560	-104.6578363	0.00	
2920.50†	15.300	245.000	2852.77	304.15	-227.53	-487.94	3235902.10	1244559.02	40.0016254	-104.6579217	0.00	
3020.50†	15.300	245.000	2949.22	319.06	-238.68	-511.85	3235878.30	1244547.64	40.0015948	-104.6580070	0.00	
3120.50†	15.300	245.000	3045.68	333.97	-249.83	-535.77	3235854.49	1244536.27	40.0015642	-104.6580924	0.00	
3220.50†	15.300	245.000	3142.13	348.87	-260.98	-559.68	3235830.68	1244524.89	40.0015336	-104.6581777	0.00	
3320.50†	15.300	245.000	3238.59	363.78	-272.14	-583.60	3235806.88	1244513.51	40.0015029	-104.6582631	0.00	
3420.50†	15.300	245.000	3335.04	378.69	-283.29	-607.51	3235783.07	1244502.13	40.0014723	-104.6583485	0.00	
3520.50†	15.300	245.000	3431.50	393.60	-294.44	-631.43	3235759.26	1244490.75	40.0014417	-104.6584338	0.00	
3620.50†	15.300	245.000	3527.96	408.50	-305.59	-655.34	3235735.46	1244479.37	40.0014111	-104.6585192	0.00	
3720.50†	15.300	245.000	3624.41	423.41	-316.74	-679.26	3235711.65	1244467.99	40.0013805	-104.6586045	0.00	
3820.50†	15.300	245.000	3720.87	438.32	-327.89	-703.17	3235687.84	1244456.62	40.0013499	-104.6586899	0.00	
3920.50†	15.300	245.000	3817.32	453.23	-339.05	-727.09	3235664.04	1244445.24	40.0013193	-104.6587753	0.00	
4020.50†	15.300	245.000	3913.78	468.13	-350.20	-751.00	3235640.23	1244433.86	40.0012886	-104.6588606	0.00	
4120.50†	15.300	245.000	4010.23	483.04	-361.35	-774.92	3235616.42	1244422.48	40.0012580	-104.6589460	0.00	

Planned Wellpath Report

Desha 4-1-4L PWP Rev-A.0

Page 3 of 7

REFERENCE WELLPATH IDENTIFICATION

Operator	CONFLUENCE RESOURCES	Well	Desha 4-1-4L
Field	WELD COUNTY (NAD83, TRUE NORTH)	API/Legal	
Facility	SEC.34-T01N-R65W	Wellbore	Desha 4-1-4L PWB
Slot	SLOT#18 Desha 4-1-4L (620'FSL & 943'FWL,SEC.34)		

WELLPATH DATA (182 stations) † = interpolated, ‡ = extrapolated station

MD [ft]	Inclination [°]	Azimuth [°]	TVD [ft]	Vert Sect [ft]	North [ft]	East [ft]	Grid East [US ft]	Grid North [US ft]	Latitude	Longitude	DLS [°/100ft]	Comments
4220.50†	15.300	245.000	4106.69	497.95	-372.50	-798.83	3235592.61	1244411.10	40.0012274	-104.6590314	0.00	
4320.50†	15.300	245.000	4203.15	512.85	-383.65	-822.75	3235568.81	1244399.72	40.0011968	-104.6591167	0.00	
4420.50†	15.300	245.000	4299.60	527.76	-394.80	-846.66	3235545.00	1244388.35	40.0011662	-104.6592021	0.00	
4520.50†	15.300	245.000	4396.06	542.67	-405.96	-870.58	3235521.19	1244376.97	40.0011356	-104.6592874	0.00	
4620.50†	15.300	245.000	4492.51	557.58	-417.11	-894.49	3235497.39	1244365.59	40.0011050	-104.6593728	0.00	
4720.50†	15.300	245.000	4588.97	572.48	-428.26	-918.41	3235473.58	1244354.21	40.0010743	-104.6594582	0.00	
4820.50†	15.300	245.000	4685.42	587.39	-439.41	-942.32	3235449.77	1244342.83	40.0010437	-104.6595435	0.00	
4920.50†	15.300	245.000	4781.88	602.30	-450.56	-966.24	3235425.97	1244331.45	40.0010131	-104.6596289	0.00	
5020.50†	15.300	245.000	4878.34	617.21	-461.71	-990.15	3235402.16	1244320.08	40.0009825	-104.6597142	0.00	
5120.50†	15.300	245.000	4974.79	632.11	-472.87	-1014.07	3235378.35	1244308.70	40.0009519	-104.6597996	0.00	
5220.50†	15.300	245.000	5071.25	647.02	-484.02	-1037.98	3235354.54	1244297.32	40.0009213	-104.6598850	0.00	
5320.50†	15.300	245.000	5167.70	661.93	-495.17	-1061.90	3235330.74	1244285.94	40.0008907	-104.6599703	0.00	
5420.50†	15.300	245.000	5264.16	676.83	-506.32	-1085.81	3235306.93	1244274.56	40.0008600	-104.6600557	0.00	
5520.50†	15.300	245.000	5360.61	691.74	-517.47	-1109.73	3235283.12	1244263.18	40.0008294	-104.6601410	0.00	
5620.50†	15.300	245.000	5457.07	706.65	-528.63	-1133.64	3235259.32	1244251.80	40.0007988	-104.6602264	0.00	
5720.50†	15.300	245.000	5553.53	721.56	-539.78	-1157.56	3235235.51	1244240.43	40.0007682	-104.6603118	0.00	
5765.00	15.300	245.000	5596.45	728.19	-544.74	-1168.20	3235224.92	1244235.36	40.0007546	-104.6603497	0.00	End of Tangent (J)
5820.50†	15.346	249.198	5649.98	736.02	-550.44	-1181.70	3235211.47	1244229.53	40.0007389	-104.6603979	2.00	
5920.50†	15.624	256.621	5746.36	747.89	-558.26	-1207.17	3235186.07	1244221.47	40.0007174	-104.6604889	2.00	
5988.32	15.950	261.463	5811.62	754.30	-561.76	-1225.27	3235168.01	1244217.81	40.0007078	-104.6605535	2.00	Build (XS)
6020.50†	15.950	261.463	5842.56	757.02	-563.07	-1234.02	3235159.27	1244216.41	40.0007042	-104.6605847	0.00	
6120.50†	15.950	261.463	5938.71	765.48	-567.15	-1261.19	3235132.14	1244212.07	40.0006930	-104.6606817	0.00	
6220.50†	15.950	261.463	6034.86	773.95	-571.23	-1288.37	3235105.01	1244207.73	40.0006818	-104.6607787	0.00	
6320.50†	15.950	261.463	6131.01	782.41	-575.31	-1315.54	3235077.87	1244203.40	40.0006706	-104.6608757	0.00	
6420.50†	15.950	261.463	6227.16	790.87	-579.39	-1342.72	3235050.74	1244199.06	40.0006594	-104.6609727	0.00	
6520.50†	15.950	261.463	6323.31	799.33	-583.47	-1369.89	3235023.61	1244194.72	40.0006482	-104.6610697	0.00	
6620.50†	15.950	261.463	6419.47	807.79	-587.55	-1397.07	3234996.47	1244190.38	40.0006370	-104.6611667	0.00	
6720.50†	15.950	261.463	6515.62	816.26	-591.62	-1424.24	3234969.34	1244186.05	40.0006258	-104.6612637	0.00	
6820.50†	15.950	261.463	6611.77	824.72	-595.70	-1451.42	3234942.20	1244181.71	40.0006146	-104.6613607	0.00	
6920.50†	15.950	261.463	6707.92	833.18	-599.78	-1478.59	3234915.07	1244177.37	40.0006034	-104.6614576	0.00	
7020.50†	15.950	261.463	6804.07	841.64	-603.86	-1505.77	3234887.94	1244173.03	40.0005922	-104.6615546	0.00	
7120.50†	15.950	261.463	6900.22	850.11	-607.94	-1532.94	3234860.80	1244168.70	40.0005810	-104.6616516	0.00	
7220.50†	15.950	261.463	6996.37	858.57	-612.02	-1560.12	3234833.67	1244164.36	40.0005698	-104.6617486	0.00	
7317.47	15.950	261.463	7089.60	866.77	-615.98	-1586.47	3234807.36	1244160.15	40.0005589	-104.6618427	0.00	KOP
7320.50†	16.006	260.156	7092.52	867.04	-616.11	-1587.29	3234806.54	1244160.01	40.0005586	-104.6618456	12.00	
7420.50†	21.457	226.069	7187.46	886.32	-631.21	-1614.14	3234779.83	1244144.65	40.0005171	-104.6619415	12.00	
7520.50†	30.742	208.471	7277.30	925.29	-666.50	-1639.59	3234754.72	1244109.13	40.0004203	-104.6620323	12.00	
7620.50†	41.349	198.834	7358.10	982.24	-720.43	-1662.53	3234732.30	1244054.99	40.0002722	-104.6621141	12.00	
7720.50†	52.475	192.640	7426.34	1054.68	-790.64	-1681.94	3234713.56	1243984.59	40.0000795	-104.6621834	12.00	
7820.50†	63.838	188.085	7479.04	1139.45	-874.07	-1696.98	3234699.31	1243901.03	39.9998504	-104.6622371	12.00	
7920.50†	75.320	184.352	7513.88	1232.84	-967.07	-1707.00	3234690.18	1243807.94	39.9995951	-104.6622728	12.00	
8020.50†	86.854	180.997	7529.35	1330.76	-1065.58	-1711.56	3234686.56	1243709.40	39.9993247	-104.6622891	12.00	
8047.74	90.000	180.107	7530.10†	1357.67	-1092.80	-1711.82	3234686.55	1243682.17	39.9992500	-104.6622900	12.00	LANDING
8120.50†	90.000	180.107	7530.10	1429.47	-1165.56	-1711.95	3234687.11	1243609.42	39.9990503	-104.6622905	0.00	
8220.50†	90.000	180.107	7530.10	1528.16	-1265.56	-1712.14	3234687.88	1243509.42	39.9987758	-104.6622911	0.00	

Planned Wellpath Report

Desha 4-1-4L PWP Rev-A.0

Page 4 of 7

REFERENCE WELLPATH IDENTIFICATION

Operator	CONFLUENCE RESOURCES	Well	Desha 4-1-4L
Field	WELD COUNTY (NAD83, TRUE NORTH)	API/Legal	
Facility	SEC.34-T01N-R65W	Wellbore	Desha 4-1-4L PWB
Slot	SLOT#18 Desha 4-1-4L (620'FSL & 943'FWL,SEC.34)		

WELLPATH DATA (182 stations) † = interpolated, ‡ = extrapolated station

MD [ft]	Inclination [°]	Azimuth [°]	TVD [ft]	Vert Sect [ft]	North [ft]	East [ft]	Grid East [US ft]	Grid North [US ft]	Latitude	Longitude	DLS [°/100ft]	Comments
8320.50†	90.000	180.107	7530.10	1626.85	-1365.56	-1712.33	3234688.64	1243409.43	39.9985013	-104.6622918	0.00	
8420.50†	90.000	180.107	7530.10	1725.54	-1465.56	-1712.51	3234689.41	1243309.44	39.9982267	-104.6622924	0.00	
8520.50†	90.000	180.107	7530.10	1824.22	-1565.56	-1712.70	3234690.17	1243209.44	39.9979522	-104.6622930	0.00	
8620.50†	90.000	180.107	7530.10	1922.91	-1665.56	-1712.89	3234690.94	1243109.45	39.9976777	-104.6622937	0.00	
8720.50†	90.000	180.107	7530.10	2021.60	-1765.56	-1713.07	3234691.70	1243009.46	39.9974032	-104.6622943	0.00	
8820.50†	90.000	180.107	7530.10	2120.29	-1865.56	-1713.26	3234692.47	1242909.46	39.9971287	-104.6622950	0.00	
8920.50†	90.000	180.107	7530.10	2218.98	-1965.56	-1713.45	3234693.23	1242809.47	39.9968542	-104.6622956	0.00	
9020.50†	90.000	180.107	7530.10	2317.66	-2065.56	-1713.63	3234694.00	1242709.48	39.9965797	-104.6622962	0.00	
9120.50†	90.000	180.107	7530.10	2416.35	-2165.56	-1713.82	3234694.76	1242609.48	39.9963052	-104.6622969	0.00	
9220.50†	90.000	180.107	7530.10	2515.04	-2265.56	-1714.01	3234695.52	1242509.49	39.9960307	-104.6622975	0.00	
9320.50†	90.000	180.107	7530.10	2613.73	-2365.56	-1714.19	3234696.29	1242409.50	39.9957562	-104.6622982	0.00	
9420.50†	90.000	180.107	7530.10	2712.42	-2465.56	-1714.38	3234697.05	1242309.50	39.9954817	-104.6622988	0.00	
9520.50†	90.000	180.107	7530.10	2811.10	-2565.56	-1714.57	3234697.82	1242209.51	39.9952072	-104.6622994	0.00	
9620.50†	90.000	180.107	7530.10	2909.79	-2665.56	-1714.75	3234698.58	1242109.52	39.9949326	-104.6623001	0.00	
9720.50†	90.000	180.107	7530.10	3008.48	-2765.56	-1714.94	3234699.35	1242009.52	39.9946581	-104.6623007	0.00	
9820.50†	90.000	180.107	7530.10	3107.17	-2865.56	-1715.13	3234700.11	1241909.53	39.9943836	-104.6623014	0.00	
9920.50†	90.000	180.107	7530.10	3205.86	-2965.56	-1715.31	3234700.88	1241809.54	39.9941091	-104.6623020	0.00	
10020.50†	90.000	180.107	7530.10	3304.54	-3065.56	-1715.50	3234701.64	1241709.54	39.9938346	-104.6623027	0.00	
10120.50†	90.000	180.107	7530.10	3403.23	-3165.56	-1715.69	3234702.41	1241609.55	39.9935601	-104.6623033	0.00	
10220.50†	90.000	180.107	7530.10	3501.92	-3265.56	-1715.87	3234703.17	1241509.55	39.9932856	-104.6623039	0.00	
10320.50†	90.000	180.107	7530.10	3600.61	-3365.56	-1716.06	3234703.94	1241409.56	39.9930111	-104.6623046	0.00	
10420.50†	90.000	180.107	7530.10	3699.30	-3465.56	-1716.25	3234704.70	1241309.57	39.9927366	-104.6623052	0.00	
10520.50†	90.000	180.107	7530.10	3797.98	-3565.56	-1716.43	3234705.47	1241209.57	39.9924621	-104.6623059	0.00	
10620.50†	90.000	180.107	7530.10	3896.67	-3665.56	-1716.62	3234706.23	1241109.58	39.9921876	-104.6623065	0.00	
10720.50†	90.000	180.107	7530.10	3995.36	-3765.56	-1716.81	3234707.00	1241009.59	39.9919130	-104.6623071	0.00	
10820.50†	90.000	180.107	7530.10	4094.05	-3865.56	-1716.99	3234707.76	1240909.59	39.9916385	-104.6623078	0.00	
10920.50†	90.000	180.107	7530.10	4192.74	-3965.56	-1717.18	3234708.53	1240809.60	39.9913640	-104.6623084	0.00	
11020.50†	90.000	180.107	7530.10	4291.42	-4065.56	-1717.37	3234709.29	1240709.61	39.9910895	-104.6623091	0.00	
11120.50†	90.000	180.107	7530.10	4390.11	-4165.56	-1717.55	3234710.06	1240609.61	39.9908150	-104.6623097	0.00	
11220.50†	90.000	180.107	7530.10	4488.80	-4265.56	-1717.74	3234710.82	1240509.62	39.9905405	-104.6623104	0.00	
11320.50†	90.000	180.107	7530.10	4587.49	-4365.56	-1717.93	3234711.59	1240409.63	39.9902660	-104.6623110	0.00	
11420.50†	90.000	180.107	7530.10	4686.18	-4465.56	-1718.11	3234712.35	1240309.63	39.9899915	-104.6623116	0.00	
11520.50†	90.000	180.107	7530.10	4784.86	-4565.56	-1718.30	3234713.12	1240209.64	39.9897170	-104.6623123	0.00	
11620.50†	90.000	180.107	7530.10	4883.55	-4665.55	-1718.49	3234713.88	1240109.65	39.9894425	-104.6623129	0.00	
11720.50†	90.000	180.107	7530.10	4982.24	-4765.55	-1718.67	3234714.65	1240009.65	39.9891680	-104.6623136	0.00	
11820.50†	90.000	180.107	7530.10	5080.93	-4865.55	-1718.86	3234715.41	1239909.66	39.9888935	-104.6623142	0.00	
11920.50†	90.000	180.107	7530.10	5179.62	-4965.55	-1719.05	3234716.18	1239809.67	39.9886189	-104.6623148	0.00	
12020.50†	90.000	180.107	7530.10	5278.30	-5065.55	-1719.23	3234716.94	1239709.67	39.9883444	-104.6623155	0.00	
12120.50†	90.000	180.107	7530.10	5376.99	-5165.55	-1719.42	3234717.71	1239609.68	39.9880699	-104.6623161	0.00	
12220.50†	90.000	180.107	7530.10	5475.68	-5265.55	-1719.61	3234718.47	1239509.68	39.9877954	-104.6623168	0.00	
12320.50†	90.000	180.107	7530.10	5574.37	-5365.55	-1719.79	3234719.24	1239409.69	39.9875209	-104.6623174	0.00	
12420.50†	90.000	180.107	7530.10	5673.06	-5465.55	-1719.98	3234720.00	1239309.70	39.9872464	-104.6623181	0.00	
12520.50†	90.000	180.107	7530.10	5771.74	-5565.55	-1720.17	3234720.77	1239209.70	39.9869719	-104.6623187	0.00	
12620.50†	90.000	180.107	7530.10	5870.43	-5665.55	-1720.35	3234721.53	1239109.71	39.9866974	-104.6623193	0.00	
12720.50†	90.000	180.107	7530.10	5969.12	-5765.55	-1720.54	3234722.30	1239009.72	39.9864229	-104.6623200	0.00	

Planned Wellpath Report

Desha 4-1-4L PWP Rev-A.0

Page 5 of 7

REFERENCE WELLPATH IDENTIFICATION

Operator	CONFLUENCE RESOURCES	Well	Desha 4-1-4L
Field	WELD COUNTY (NAD83, TRUE NORTH)	API/Legal	
Facility	SEC.34-T01N-R65W	Wellbore	Desha 4-1-4L PWB
Slot	SLOT#18 Desha 4-1-4L (620'FSL & 943'FWL,SEC.34)		

WELLPATH DATA (182 stations) † = interpolated, ‡ = extrapolated station

MD [ft]	Inclination [°]	Azimuth [°]	TVD [ft]	Vert Sect [ft]	North [ft]	East [ft]	Grid East [US ft]	Grid North [US ft]	Latitude	Longitude	DLS [°/100ft]	Comments
12820.50†	90.000	180.107	7530.10	6067.81	-5865.55	-1720.73	3234723.06	1238909.72	39.9861484	-104.6623206	0.00	
12920.50†	90.000	180.107	7530.10	6166.50	-5965.55	-1720.91	3234723.83	1238809.73	39.9858739	-104.6623213	0.00	
13020.50†	90.000	180.107	7530.10	6265.18	-6065.55	-1721.10	3234724.59	1238709.74	39.9855993	-104.6623219	0.00	
13120.50†	90.000	180.107	7530.10	6363.87	-6165.55	-1721.29	3234725.36	1238609.74	39.9853248	-104.6623225	0.00	
13220.50†	90.000	180.107	7530.10	6462.56	-6265.55	-1721.47	3234726.12	1238509.75	39.9850503	-104.6623232	0.00	
13320.50†	90.000	180.107	7530.10	6561.25	-6365.55	-1721.66	3234726.89	1238409.76	39.9847758	-104.6623238	0.00	
13420.50†	90.000	180.107	7530.10	6659.94	-6465.55	-1721.85	3234727.65	1238309.76	39.9845013	-104.6623245	0.00	
13520.50†	90.000	180.107	7530.10	6758.62	-6565.55	-1722.03	3234728.42	1238209.77	39.9842268	-104.6623251	0.00	
13620.50†	90.000	180.107	7530.10	6857.31	-6665.55	-1722.22	3234729.18	1238109.78	39.9839523	-104.6623257	0.00	
13720.50†	90.000	180.107	7530.10	6956.00	-6765.55	-1722.41	3234729.95	1238009.78	39.9836778	-104.6623264	0.00	
13820.50†	90.000	180.107	7530.10	7054.69	-6865.55	-1722.59	3234730.71	1237909.79	39.9834033	-104.6623270	0.00	
13920.50†	90.000	180.107	7530.10	7153.38	-6965.55	-1722.78	3234731.48	1237809.80	39.9831288	-104.6623277	0.00	
14020.50†	90.000	180.107	7530.10	7252.06	-7065.55	-1722.97	3234732.24	1237709.80	39.9828543	-104.6623283	0.00	
14120.50†	90.000	180.107	7530.10	7350.75	-7165.55	-1723.15	3234733.01	1237609.81	39.9825797	-104.6623290	0.00	
14220.50†	90.000	180.107	7530.10	7449.44	-7265.55	-1723.34	3234733.77	1237509.82	39.9823052	-104.6623296	0.00	
14320.50†	90.000	180.107	7530.10	7548.13	-7365.55	-1723.53	3234734.53	1237409.82	39.9820307	-104.6623302	0.00	
14420.50†	90.000	180.107	7530.10	7646.82	-7465.55	-1723.71	3234735.30	1237309.83	39.9817562	-104.6623309	0.00	
14520.50†	90.000	180.107	7530.10	7745.50	-7565.55	-1723.90	3234736.06	1237209.83	39.9814817	-104.6623315	0.00	
14620.50†	90.000	180.107	7530.10	7844.19	-7665.55	-1724.09	3234736.83	1237109.84	39.9812072	-104.6623322	0.00	
14720.50†	90.000	180.107	7530.10	7942.88	-7765.55	-1724.27	3234737.59	1237009.85	39.9809327	-104.6623328	0.00	
14820.50†	90.000	180.107	7530.10	8041.57	-7865.55	-1724.46	3234738.36	1236909.85	39.9806582	-104.6623334	0.00	
14920.50†	90.000	180.107	7530.10	8140.26	-7965.55	-1724.65	3234739.12	1236809.86	39.9803837	-104.6623341	0.00	
15020.50†	90.000	180.107	7530.10	8238.94	-8065.55	-1724.83	3234739.89	1236709.87	39.9801092	-104.6623347	0.00	
15120.50†	90.000	180.107	7530.10	8337.63	-8165.55	-1725.02	3234740.65	1236609.87	39.9798347	-104.6623354	0.00	
15220.50†	90.000	180.107	7530.10	8436.32	-8265.55	-1725.21	3234741.42	1236509.88	39.9795601	-104.6623360	0.00	
15320.50†	90.000	180.107	7530.10	8535.01	-8365.55	-1725.39	3234742.18	1236409.89	39.9792856	-104.6623366	0.00	
15420.50†	90.000	180.107	7530.10	8633.70	-8465.55	-1725.58	3234742.95	1236309.89	39.9790111	-104.6623373	0.00	
15520.50†	90.000	180.107	7530.10	8732.38	-8565.55	-1725.77	3234743.71	1236209.90	39.9787366	-104.6623379	0.00	
15620.50†	90.000	180.107	7530.10	8831.07	-8665.55	-1725.95	3234744.48	1236109.91	39.9784621	-104.6623386	0.00	
15720.50†	90.000	180.107	7530.10	8929.76	-8765.55	-1726.14	3234745.24	1236009.91	39.9781876	-104.6623392	0.00	
15820.50†	90.000	180.107	7530.10	9028.45	-8865.55	-1726.33	3234746.01	1235909.92	39.9779131	-104.6623399	0.00	
15920.50†	90.000	180.107	7530.10	9127.14	-8965.55	-1726.51	3234746.77	1235809.93	39.9776386	-104.6623405	0.00	
16020.50†	90.000	180.107	7530.10	9225.82	-9065.55	-1726.70	3234747.54	1235709.93	39.9773641	-104.6623411	0.00	
16120.50†	90.000	180.107	7530.10	9324.51	-9165.55	-1726.89	3234748.30	1235609.94	39.9770896	-104.6623418	0.00	
16220.50†	90.000	180.107	7530.10	9423.20	-9265.55	-1727.07	3234749.07	1235509.95	39.9768151	-104.6623424	0.00	
16320.50†	90.000	180.107	7530.10	9521.89	-9365.55	-1727.26	3234749.83	1235409.95	39.9765406	-104.6623431	0.00	
16420.50†	90.000	180.107	7530.10	9620.58	-9465.55	-1727.45	3234750.60	1235309.96	39.9762660	-104.6623437	0.00	
16520.50†	90.000	180.107	7530.10	9719.26	-9565.55	-1727.63	3234751.36	1235209.96	39.9759915	-104.6623443	0.00	
16620.50†	90.000	180.107	7530.10	9817.95	-9665.55	-1727.82	3234752.13	1235109.97	39.9757170	-104.6623450	0.00	
16720.50†	90.000	180.107	7530.10	9916.64	-9765.55	-1728.01	3234752.89	1235009.98	39.9754425	-104.6623456	0.00	
16820.50†	90.000	180.107	7530.10	10015.33	-9865.55	-1728.19	3234753.66	1234909.98	39.9751680	-104.6623463	0.00	
16920.50†	90.000	180.107	7530.10	10114.02	-9965.55	-1728.38	3234754.42	1234809.99	39.9748935	-104.6623469	0.00	
17020.50†	90.000	180.107	7530.10	10212.70	-10065.55	-1728.57	3234755.19	1234710.00	39.9746190	-104.6623475	0.00	
17120.50†	90.000	180.107	7530.10	10311.39	-10165.55	-1728.75	3234755.95	1234610.00	39.9743445	-104.6623482	0.00	
17220.50†	90.000	180.107	7530.10	10410.08	-10265.55	-1728.94	3234756.72	1234510.01	39.9740700	-104.6623488	0.00	

REFERENCE WELLPATH IDENTIFICATION

Operator	CONFLUENCE RESOURCES	Well	Desha 4-1-4L
Field	WELD COUNTY (NAD83, TRUE NORTH)	API/Legal	
Facility	SEC.34-T01N-R65W	Wellbore	Desha 4-1-4L PWB
Slot	SLOT#18 Desha 4-1-4L (620'FSL & 943'FWL,SEC.34)		

WELLPATH DATA (182 stations) † = interpolated, ‡ = extrapolated station

MD [ft]	Inclination [°]	Azimuth [°]	TVD [ft]	Vert Sect [ft]	North [ft]	East [ft]	Grid East [US ft]	Grid North [US ft]	Latitude	Longitude	DLS [°/100ft]	Comments
17320.50†	90.000	180.107	7530.10	10508.77	-10365.54	-1729.13	3234757.48	1234410.02	39.9737955	-104.6623495	0.00	
17402.63	90.000	180.107	7530.10 ²	10589.82	-10447.68	-1729.28	3234758.11	1234327.89	39.9735700	-104.6623500	0.00	TD

HOLE & CASING SECTIONS - Ref Wellbore: Desha 4-1-4L PWB Ref Wellpath: Desha 4-1-4L PWP Rev-A.0

String/Diameter	Start MD [ft]	End MD [ft]	Interval [ft]	Start TVD [ft]	End TVD [ft]	Start N/S [ft]	Start E/W [ft]	End N/S [ft]	End E/W [ft]
9.625in Casing Surface	20.50	1518.03	1497.53	20.50	1500.00	0.00	0.00	-71.13	-152.53

TARGETS

Name	MD [ft]	TVD [ft]	North [ft]	East [ft]	Grid East [US ft]	Grid North [US ft]	Latitude	Longitude	Shape
SEC.04-T01S-R65W	N/A	62.00	62.60	-5776.77	3230610.94	1244798.80	40.0024200	-104.6768000	polygon
2D Polygon: dimensions not calculated									
SEC.04/09-T01S-R65W 470' SETBACK	N/A	v2.00	62.60	-5776.77	3230610.94	1244798.80	40.0024200	-104.6768000	polygon
2D Polygon: dimensions not calculated									
SEC.09-T01S-R65W	N/A	62.00	62.60	-5776.77	3230610.94	1244798.80	40.0024200	-104.6768000	polygon
2D Polygon: dimensions not calculated									
2) Desha 4-1-4L BHL REV-1 (470'FSL & 790'FEL,SEC.09)	17402.63	7530.10	-10447.68	-1729.28	3234758.11	1234327.89	39.9735700	-104.6623500	point
1) Desha 4-1-4L LP REV-1 (470'FNL & 790'FEL,SEC.04)	8047.74	7530.10	-1092.80	-1711.82	3234686.55	1243682.17	39.9992500	-104.6622900	point

SURVEY PROGRAM - Ref Wellbore: Desha 4-1-4L PWB Ref Wellpath: Desha 4-1-4L PWP Rev-A.0

Start MD [ft]	End MD [ft]	Positional Uncertainty Model	Log Name/Comment	Wellbore
20.50	1518.03	BH NaviTrak (2019) (Axial)		Desha 4-1-4L PWB
1518.03	17444.31	BH AutoTrak Curve/eXpress (2019) (Short spacing)		Desha 4-1-4L PWB

Planned Wellpath Report

Desha 4-1-4L PWP Rev-A.0

Page 7 of 7

REFERENCE WELLPATH IDENTIFICATION

Operator	CONFLUENCE RESOURCES	Well	Desha 4-1-4L
Field	WELD COUNTY (NAD83, TRUE NORTH)	API/Legal	
Facility	SEC.34-T01N-R65W	Wellbore	Desha 4-1-4L PWB
Slot	SLOT#18 Desha 4-1-4L (620'FSL & 943'FWL,SEC.34)		

DESIGN COMMENTS

MD [ft]	Inclination [°]	Azimuth [°]	TVD [ft]	Comment
20.50	0.000	245.000	20.50	Tie On
500.00	0.000	245.000	500.00	End of Tangent
1265.00	15.300	245.000	1255.94	End of Build (J)
5765.00	15.300	245.000	5596.45	End of Tangent (J)
5988.32	15.950	261.463	5811.62	Build (XS)
7317.47	15.950	261.463	7089.60	KOP
8047.74	90.000	180.107	7530.10	LANDING
17402.63	90.000	180.107	7530.10	TD