



Mr. Phillip Porter
PDC Energy Inc.
4000 Burlington Avenue
Evans, Colorado 80620

September 28, 2020

RE: Vegetation Assessment Report (Final Reclamation Completion Notice)
COGCC Location Information: BOWEN-64N67W /25NESE (Location I.D. 323266)
Operator Location Information: Bowen 1 Well & Bowen 1 Facility (API # 05-123-12787)
PDC Energy Inc. (Operator: 69175)

Dear Mr. Porter:

Apex Companies, LLC (Apex) is presenting this letter to PDC Energy Inc. (PDC) documenting the results of a vegetation assessment that demonstrates successful completion of final reclamation efforts, per Colorado Oil & Gas Conservation Commission (COGCC) Rule 1004, on the above-referenced location. Attached is a topographic location map and a vegetation survey site map with additional location information.

Site visits, project correspondence and documentation, and the completed vegetation assessment confirmed that the location has been final reclaimed and returned by the landowner to cropland or residential use, with no evidence of unrestored subsidence over two growing seasons. Based on the results of the survey, final reclamation, as defined by COGCC rules and regulations, has been achieved. Photographs exhibiting current site conditions are attached, along with the site map that illustrates the photo points.

On July 8, 2020 the well site was visited and photographs documenting crop establishment throughout the location were taken, along with reference area crops. On August 13, 2020 the facility was visited and photos documenting land owner use of the location were taken. Subsequent communication with the land owner on September 4, 2020 confirmed that he has no defined plans to return the area to cropland, as they recently built a house on the property. The land owner has taken over the disturbance and is harrowing the area to mitigate weed establishment.

Apex appreciates the opportunity to provide environmental consulting services on this project. Should you have any questions or require additional information, please do not hesitate to contact me.

Sincerely,
Apex Companies, LLC

A handwritten signature in black ink, appearing to read 'Adam Roll'.

Adam Roll
Environmental Scientist
970-589-6111
Adam.Roll@apexcos.com

Attachments:

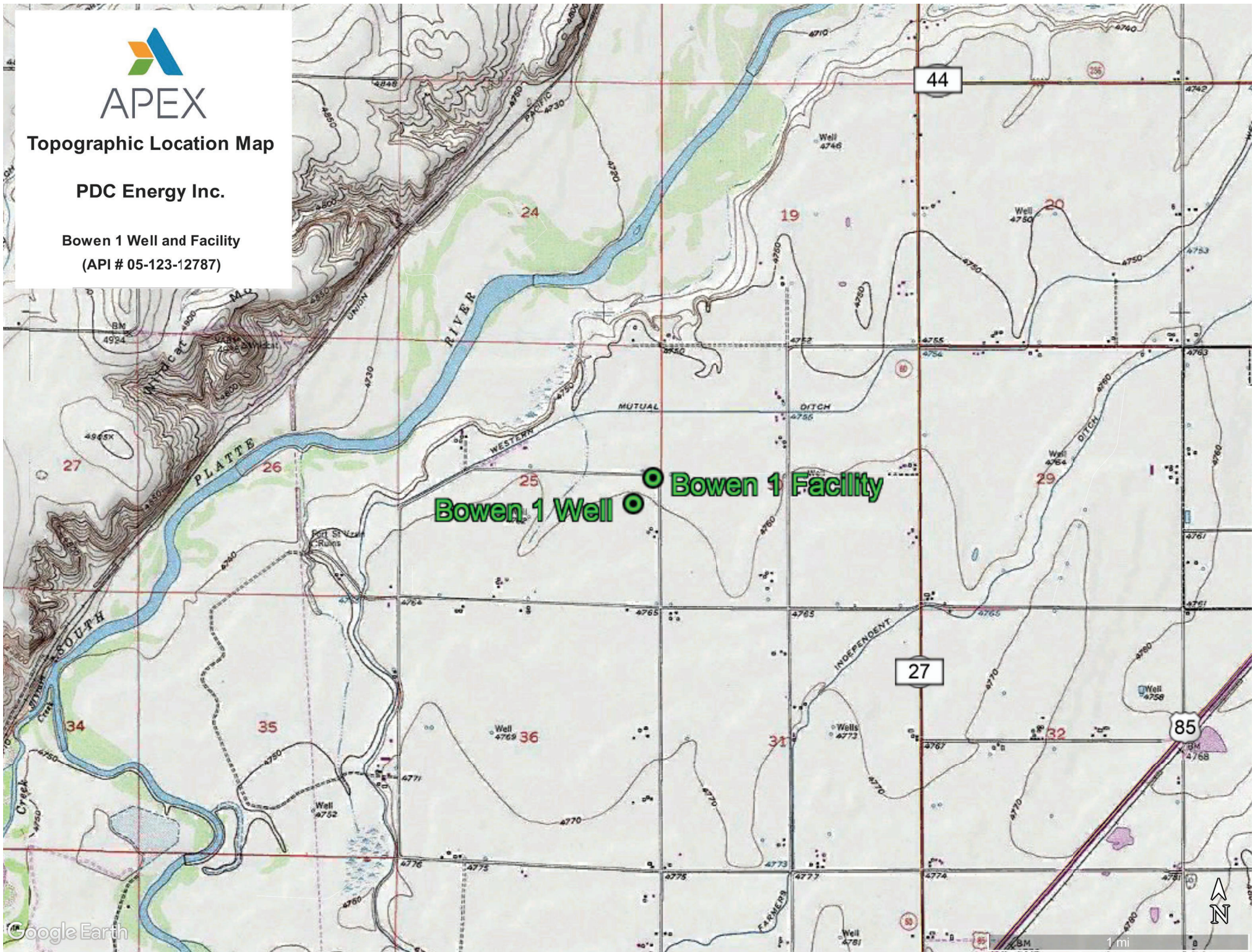
1. Topographic Location Map
2. Vegetation Survey Site Map
3. Vegetation Assessment Photo Log



Topographic Location Map

PDC Energy Inc.

Bowen 1 Well and Facility
(API # 05-123-12787)





Vegetation Survey Site Map

PDC Energy Inc.

Bowen 1 Well and Facility
(API # 05-123-12787)

 Vegetation Photo Point

 Directional Photos

Legal Description: NESE, Sec. 25, T4N-R67W

Well Lat/Long: 40.281087 / -104.83161

Facility Lat/Long: 40.282506 / -104.830183

County: Weld

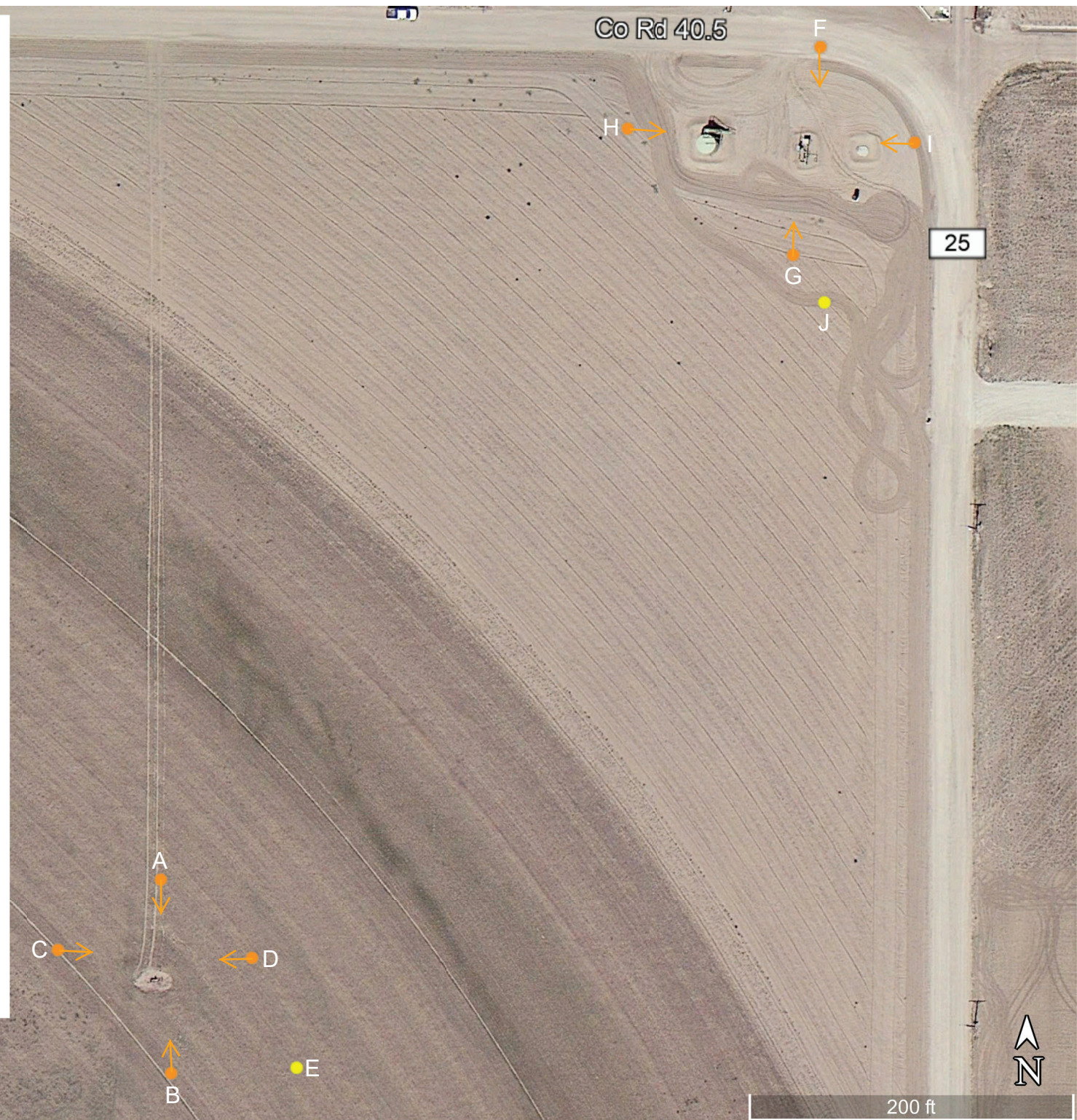
Land Use: Crop Land

Inspector: A. Roll

Assessment Dates: 07/08/2020 / 08/13/2020

Aerial Imagery Date: 08/18/2012

**Please reference coordinate disclaimer on the photo log pages.*



Google Earth

Vegetation Assessment Photo Log

Date Completed - 07/08/2020

Client - PDC Energy Inc.

Operator Location Information (API) - **Bowen 1 Well (05-123-12787)**



Photo Point A: North of Disturbance - Facing South



Photo Point B: South of Disturbance - Facing North



Photo Point C: West of Disturbance - Facing East



Photo Point D: East of Disturbance - Facing West

*Geographic coordinates provided in the borders of all attached photos are based on points identified by the mobile phone or tablet which collected the photo. Coordinate accuracy in this format is typically no greater than 5 meters, while the points illustrated in the site diagram associated with this submittal were collected with a high accuracy GPS unit with sub-meter accuracy. Discrepancies between the site diagram and photo coordinates will exist.

Vegetation Assessment Photo Log

Date Completed - 07/08/2020

Client - PDC Energy Inc.

Operator Location Information (API) - Bowen 1 Well (05-123-12787)



Photo Point E: Reference Crop Vegetation - Facing Southeast

Vegetation Assessment Photo Log

Date Completed - 08/13/2020

Client - PDC Energy Inc.

Operator Location Information (API) - **Bowen 1 Facility (05-123-12787)**



Photo Point F: North of Disturbance - Facing South



Photo Point G: South of Disturbance - Facing North



Photo Point H: West of Disturbance - Facing East

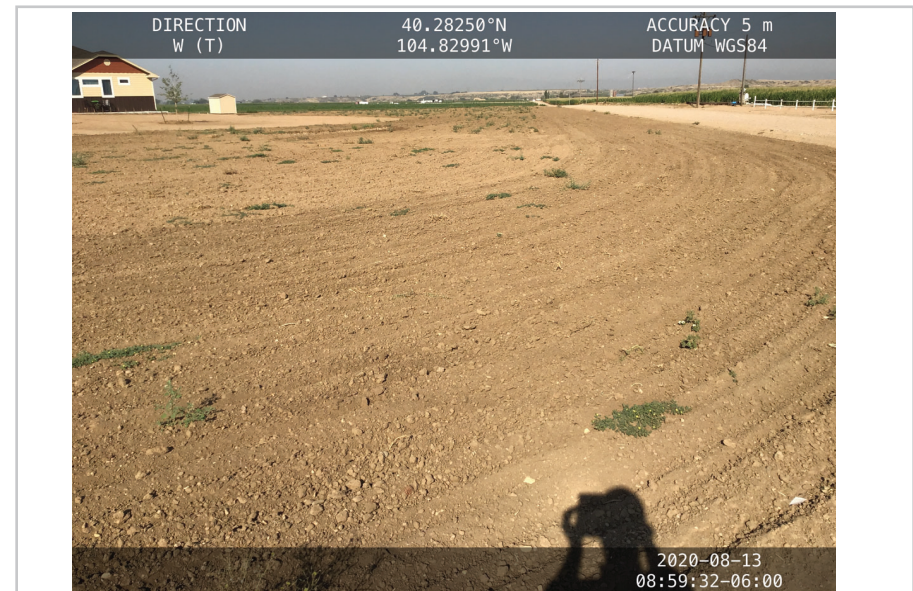


Photo Point I: East of Disturbance - Facing West

*Geographic coordinates provided in the borders of all attached photos are based on points identified by the mobile phone or tablet which collected the photo. Coordinate accuracy in this format is typically no greater than 5 meters, while the points illustrated in the site diagram associated with this submittal were collected with a high accuracy GPS unit with sub-meter accuracy. Discrepancies between the site diagram and photo coordinates will exist.

Vegetation Assessment Photo Log

Date Completed - 08/13/2020

Client - PDC Energy Inc.

Operator Location Information (API) - Bowen 1 Facility (05-123-12787)



Photo Point J: Reference Area - Facing West