



Company
Well

Interval

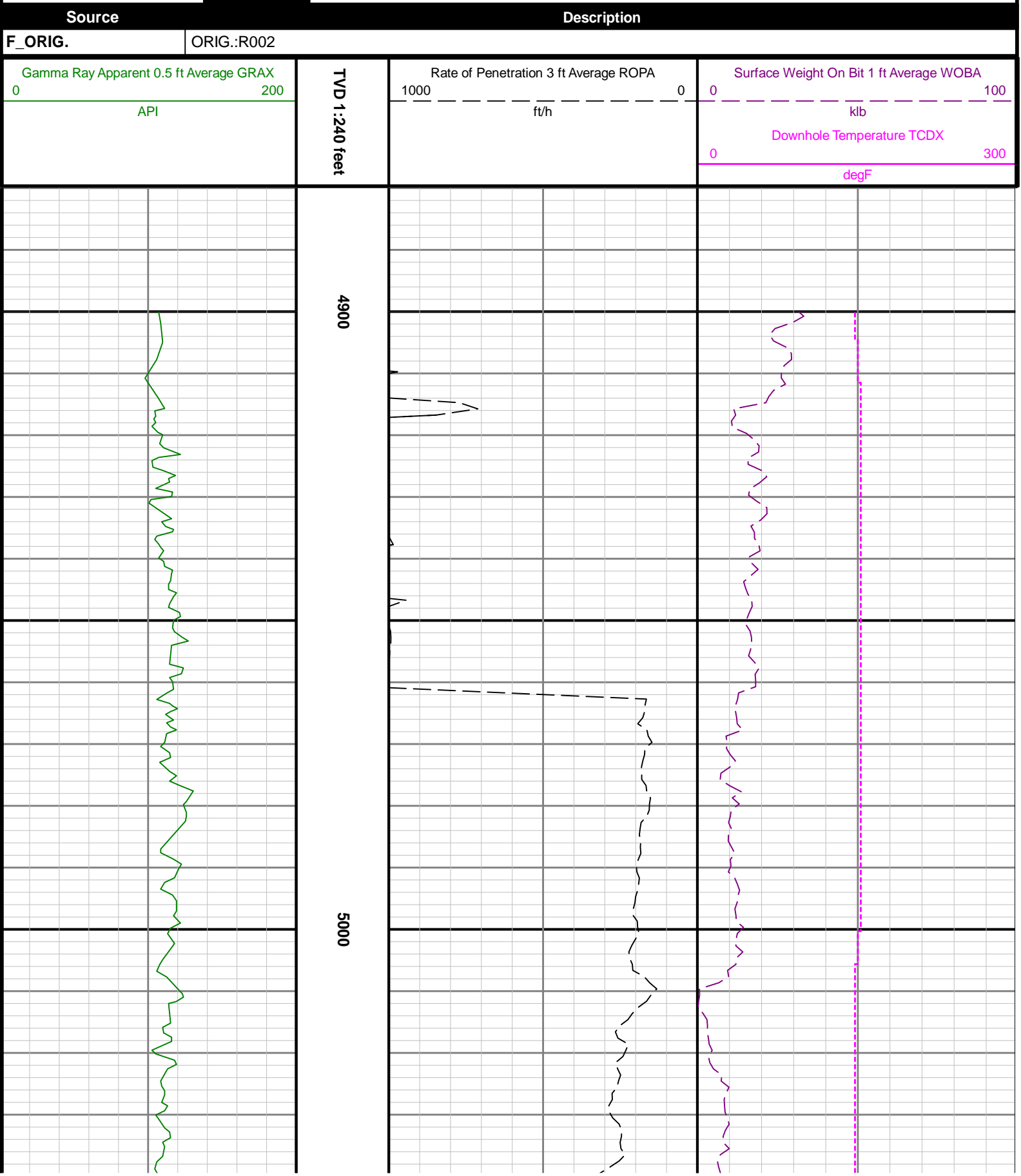
Created

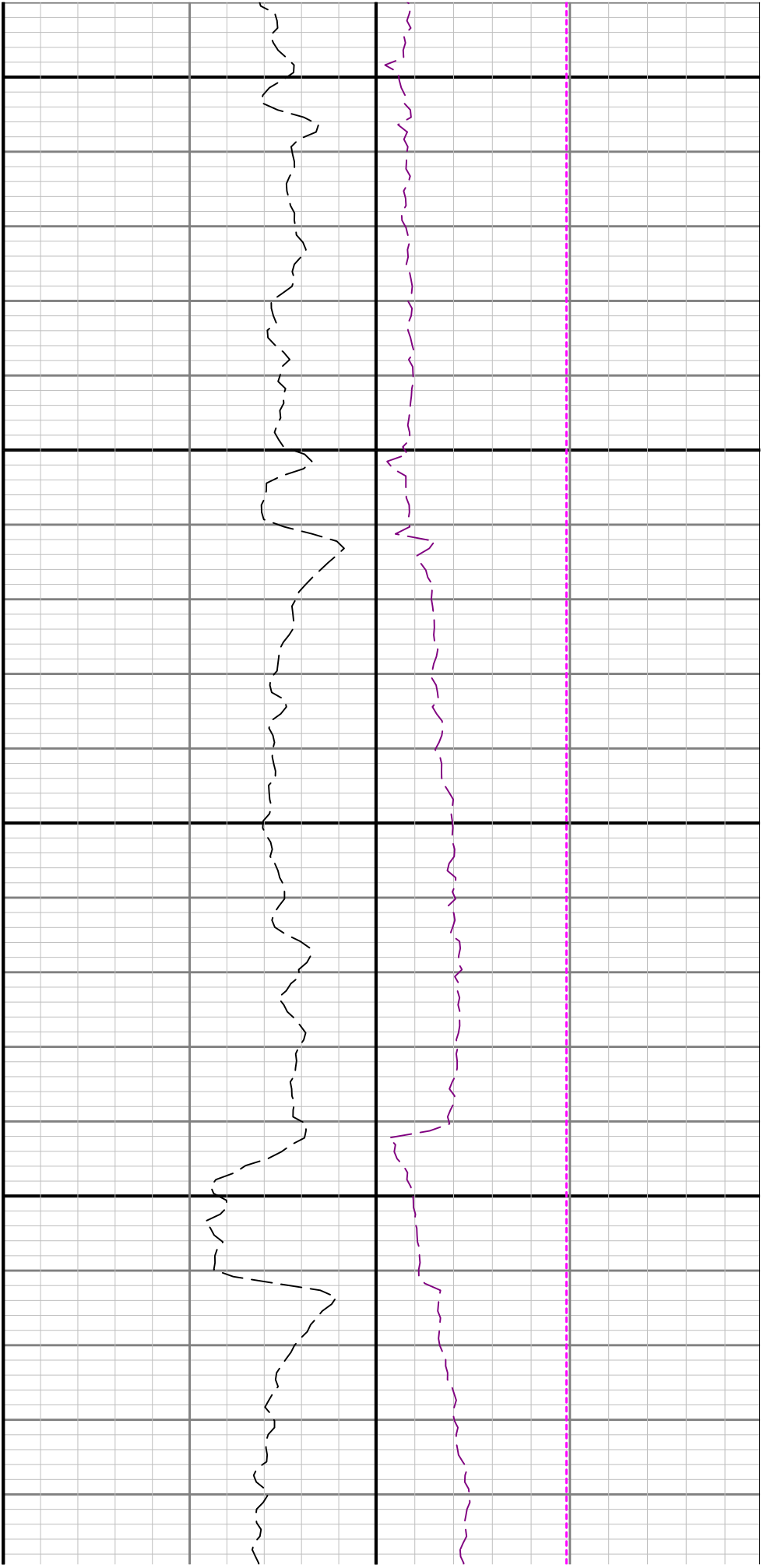
Whiting Oil & Gas Corp.
Horsetail #30E-1902

Date From: 2016-10-24 05:06:23
Date To: 2016-10-24 09:27:35
2016-10-24 09:34

API: 05-123-42880-00
Location: 2323' FNL & 600' FWL SWNW Sec 30 T10N R57W

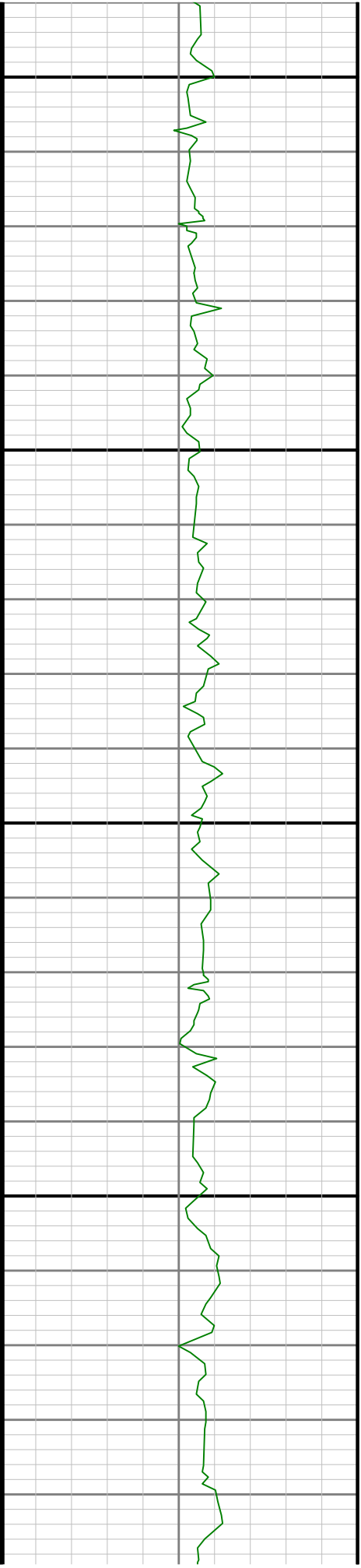
Top: 4900.00
Bottom: 5597.00

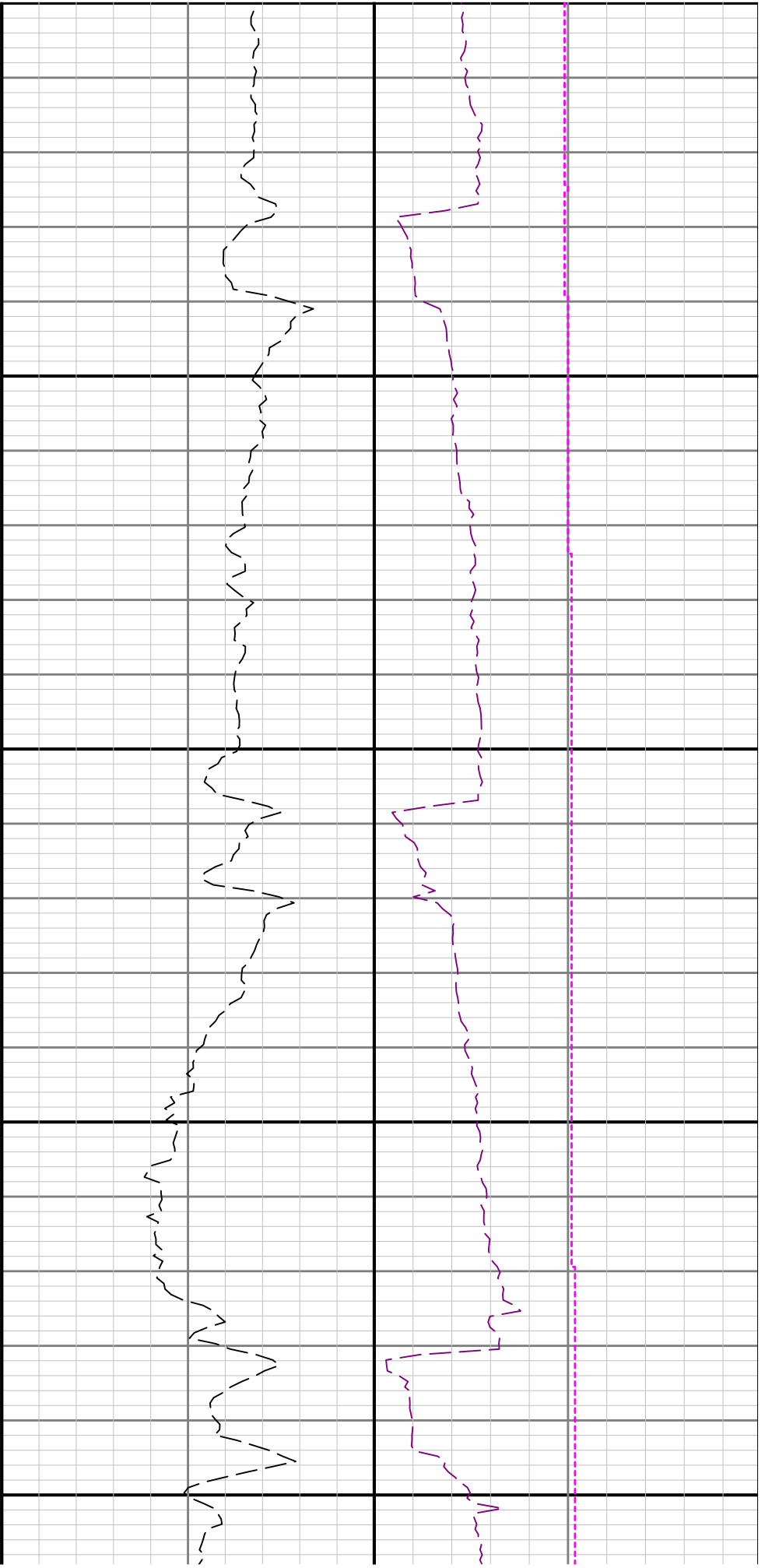




5100

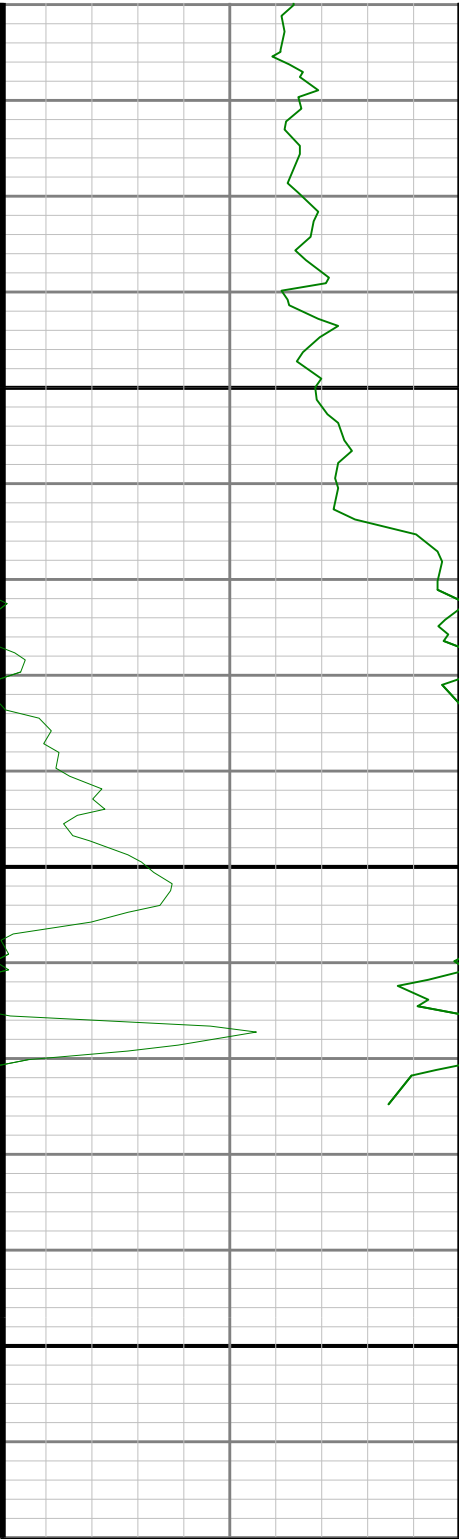
5200





5300

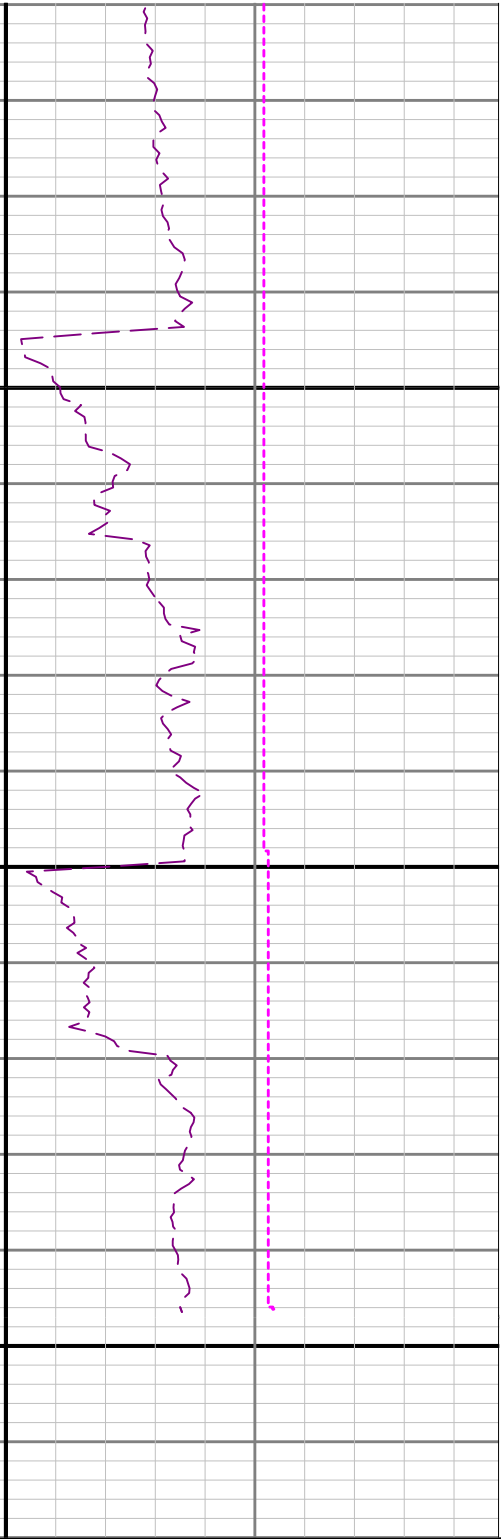
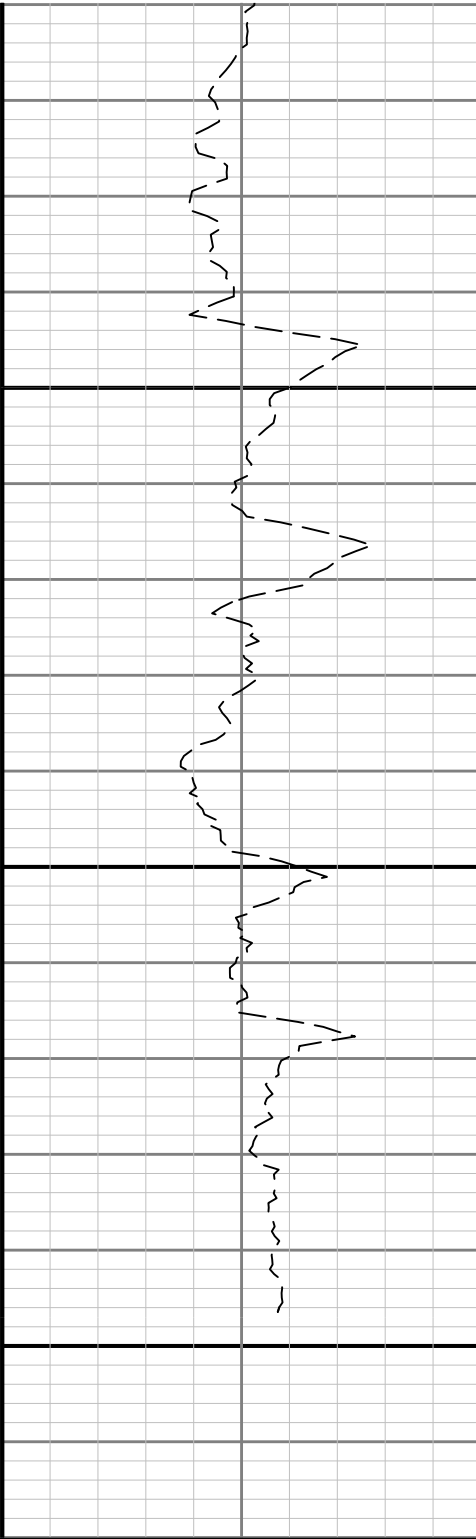
5400



5500

5600

TVD 1:240 feet



Gamma Ray Apparent 0.5 ft Average GRAX

0 200

API

Rate of Penetration 3 ft Average ROPA

1000 0

ft/h

Surface Weight On Bit 1 ft Average WOBA

0 100

klb

Downhole Temperature TCDX

0 300

degF