

Project: Garfield County, CO
 Site: BJU B26 496 Pad
 Well: BJU B26 FED 12B-26 496
 Wellbore: Wellbore #1
 Design: Design #1
 Latitude: 39.677494
 Longitude: -108.137794
 Ground Level: 8211.0
 RKB @ 8241.0usft (30')

PROJECT DETAILS: Garfield County, CO
 Geodetic System: Universal Transverse Mercator (US Survey Feet)
 Datum: NAD 1927 - Western US
 Ellipsoid: Clarke 1866
 Zone: Zone 12N (114 W to 108 W)
 System Datum: Mean Sea Level

REFERENCE INFORMATION
 Vertical (TVD) Reference: RKB @ 8241.0usft (30')
 Section (VS) Reference: Slot - BJU B26 FED 12B-26 496(0.0N, 0.0E)
 Measured Depth Reference: RKB @ 8241.0usft (30')
 Calculation Method: Minimum Curvature

FORMATION TOP DETAILS

TVDPath	MDPath	Formation
3351.0	3373.4	Wasatch
5751.0	5791.4	Wasatch G
6051.0	6093.6	Fort Union
8064.0	8106.8	Ohio Creek / TOG
8356.0	8398.8	Williams Fork
11288.0	11331.8	Cameo
11788.0	11832.0	Rollins

SECTION DETAILS

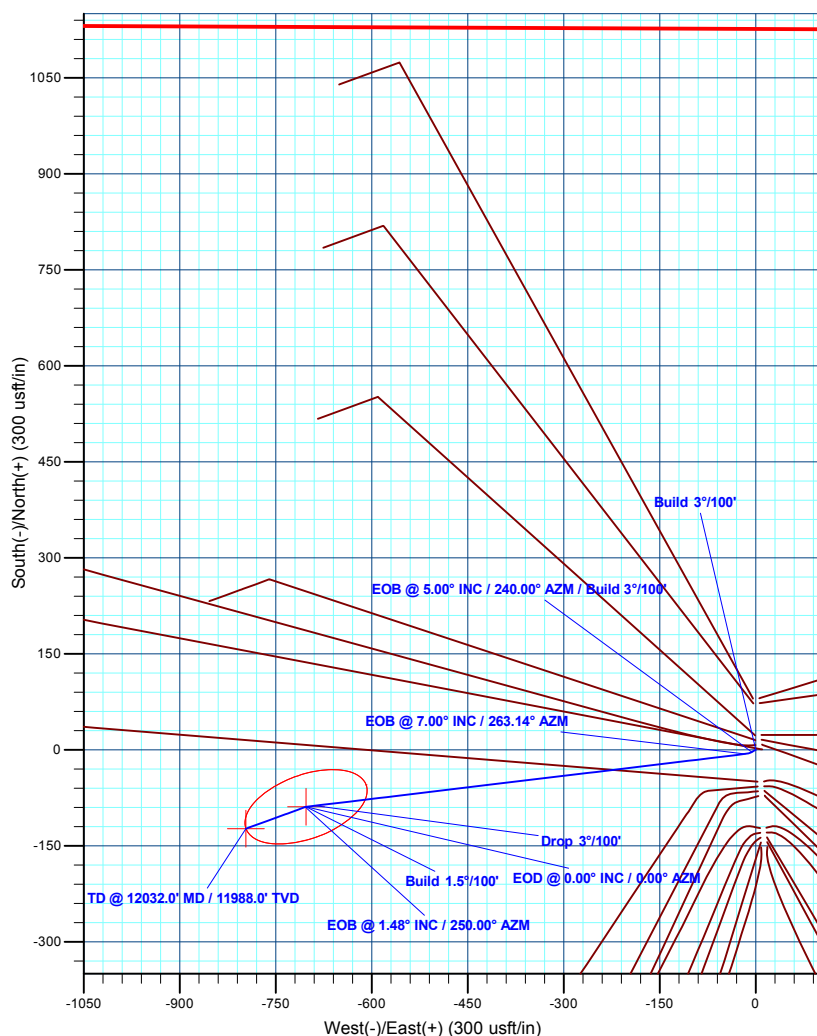
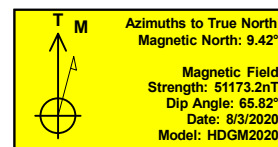
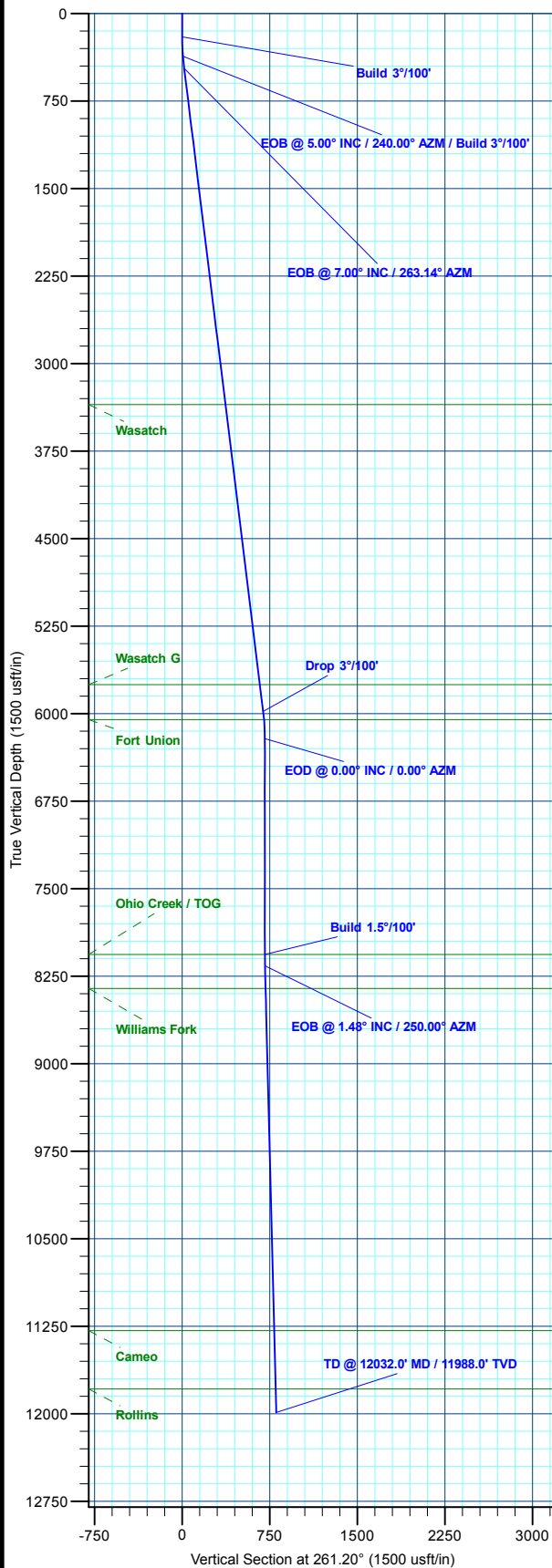
MD	Inc	Azi	TVD	+N/-S	+E/-W	Dleg	TFace	VSect	Annotation
0.0	0.00	0.00	0.0	0.0	0.0	0.00	0.00	0.0	
200.0	0.00	0.00	200.0	0.0	0.0	0.00	0.00	0.0	Build 3°/100'
366.7	5.00	240.00	366.5	-3.6	-6.3	3.00	240.00	6.8	EOB @ 5.00° INC / 240.00° AZM / Build 3°/100'
470.1	7.00	263.14	469.3	-6.6	-16.5	3.00	62.30	17.3	EOB @ 7.00° INC / 263.14° AZM
6023.4	7.00	263.14	5981.2	-87.4	-688.5	0.00	0.00	693.8	Drop 3°/100'
6256.8	0.00	0.00	6214.0	-89.1	-702.7	3.00	180.00	708.0	EOD @ 0.00° INC / 0.00° AZM
8106.8	0.00	0.00	8064.0	-89.1	-702.7	0.00	0.00	708.0	Build 1.5°/100'
8205.3	1.48	250.00	8162.5	-89.6	-703.9	1.50	250.00	709.3	EOB @ 1.48° INC / 250.00° AZM
12032.0	1.48	250.00	11988.0	-123.3	-796.6	0.00	0.00	806.1	TD @ 12032.0' MD / 11988.0' TVD

DESIGN TARGET DETAILS

Name	TVD	+N/-S	+E/-W	Northing	Easting	Latitude	Longitude
12B-26 - OHCR	8064.0	-89.1	-702.7	14421350.79	2445122.43	39.677250	-108.140290
12B-26 - PBHL	11988.0	-123.3	-796.6	14421313.60	2445029.60	39.677156	-108.140623

WELL DETAILS: BJU B26 FED 12B-26 496

+N/-S	+E/-W	Ground Level	Easting	Latitude	Longitude
0.0	0.0	8211.0	14421462.30	39.677494	-108.137794



Plan: Design #1 (BJU B26 FED 12B-26 496/Wellbore #1)

Created By: Will Jircik Date: 12:40, August 06 2020



Caerus Oil & Gas

Garfield County, CO

BJU B26 496 Pad

BJU B26 FED 12B-26 496 - Slot BJU B26 FED 12B-26 496

Wellbore #1

Plan: Design #1

QES Well Planning Report

06 August, 2020



Database:	EDM 5000.1 Single User Db	Local Co-ordinate Reference:	Well BJU B26 FED 12B-26 496 - Slot BJU B26 FED 12B-26 496
Company:	Caerus Oil & Gas	TVD Reference:	RKB @ 8241.0usft (30')
Project:	Garfield County, CO	MD Reference:	RKB @ 8241.0usft (30')
Site:	BJU B26 496 Pad	North Reference:	True
Well:	BJU B26 FED 12B-26 496	Survey Calculation Method:	Minimum Curvature
Wellbore:	Wellbore #1		
Design:	Design #1		

Project	Garfield County, CO		
Map System:	Universal Transverse Mercator (US Survey Fee	System Datum:	Mean Sea Level
Geo Datum:	NAD 1927 - Western US		
Map Zone:	Zone 12N (114 W to 108 W)		

Site		BJU B26 496 Pad				
Site Position:		Northing:	14,421,469.70 usft	Latitude:	39.677515	
From:	Map	Easting:	2,445,821.30 usft	Longitude:	-108.137796	
Position Uncertainty:		0.0 usft	Slot Radius:	13-3/16 "	Grid Convergence:	1.83 °

Well	BJU B26 FED 12B-26 496 - Slot BJU B26 FED 12B-26 496					
Well Position	+N/-S	-7.4 usft	Northing:	14,421,462.30 usft	Latitude:	39.677494
	+E/-W	0.4 usft	Easting:	2,445,821.90 usft	Longitude:	-108.137794
Position Uncertainty		0.0 usft	Wellhead Elevation:		Ground Level:	8,211.0 usft

Wellbore	Wellbore #1				
Magnetics	Model Name	Sample Date	Declination (°)	Dip Angle (°)	Field Strength (nT)
	HDGM2020	8/3/2020	9.42	65.82	51,173.20000000

Design	Design #1				
Audit Notes:					
Version:	Phase:	PLAN	Tie On Depth:	0.0	
Vertical Section:	Depth From (TVD) (usft)	+N/-S (usft)	+E/-W (usft)	Direction (°)	
	0.0	0.0	0.0	261.20	

Plan Sections										
Measured Depth (usft)	Inclination (°)	Azimuth (°)	Vertical Depth (usft)	+N/-S (usft)	+E/-W (usft)	Dogleg Rate (°/100usft)	Build Rate (°/100usft)	Turn Rate (°/100usft)	TFO (°)	Target
0.0	0.00	0.00	0.0	0.0	0.0	0.00	0.00	0.00	0.00	
200.0	0.00	0.00	200.0	0.0	0.0	0.00	0.00	0.00	0.00	
366.7	5.00	240.00	366.5	-3.6	-6.3	3.00	3.00	0.00	240.00	
470.1	7.00	263.14	469.3	-6.6	-16.5	3.00	1.94	22.38	62.30	
6,023.4	7.00	263.14	5,981.2	-87.4	-688.5	0.00	0.00	0.00	0.00	
6,256.8	0.00	0.00	6,214.0	-89.1	-702.7	3.00	-3.00	0.00	180.00	
8,106.8	0.00	0.00	8,064.0	-89.1	-702.7	0.00	0.00	0.00	0.00	12B-26 - OHCR
8,205.3	1.48	250.00	8,162.5	-89.6	-703.9	1.50	1.50	-111.61	250.00	
12,032.0	1.48	250.00	11,988.0	-123.3	-796.6	0.00	0.00	0.00	0.00	12B-26 - PBHL

Database:	EDM 5000.1 Single User Db	Local Co-ordinate Reference:	Well BJU B26 FED 12B-26 496 - Slot BJU B26 FED 12B-26 496
Company:	Caerus Oil & Gas	TVD Reference:	RKB @ 8241.0usft (30')
Project:	Garfield County, CO	MD Reference:	RKB @ 8241.0usft (30')
Site:	BJU B26 496 Pad	North Reference:	True
Well:	BJU B26 FED 12B-26 496	Survey Calculation Method:	Minimum Curvature
Wellbore:	Wellbore #1		
Design:	Design #1		

Planned Survey

Measured Depth (usft)	Inclination (°)	Azimuth (°)	Vertical Depth (usft)	+N/-S (usft)	+E/-W (usft)	Vertical Section (usft)	Dogleg Rate (°/100usft)	Build Rate (°/100usft)	Turn Rate (°/100usft)
0.0	0.00	0.00	0.0	0.0	0.0	0.0	0.00	0.00	0.00
100.0	0.00	0.00	100.0	0.0	0.0	0.0	0.00	0.00	0.00
Build 3°/100'									
200.0	0.00	0.00	200.0	0.0	0.0	0.0	0.00	0.00	0.00
300.0	3.00	240.00	300.0	-1.3	-2.3	2.4	3.00	3.00	0.00
EOB @ 5.00° INC / 240.00° AZM / Build 3°/100'									
366.7	5.00	240.00	366.5	-3.6	-6.3	6.8	3.00	3.00	0.00
400.0	5.54	249.22	399.6	-4.9	-9.1	9.7	3.00	1.61	27.65
EOB @ 7.00° INC / 263.14° AZM									
470.1	7.00	263.14	469.3	-6.6	-16.5	17.3	3.00	2.09	19.88
500.0	7.00	263.14	499.0	-7.1	-20.1	20.9	0.00	0.00	0.00
600.0	7.00	263.14	598.3	-8.5	-32.2	33.1	0.00	0.00	0.00
700.0	7.00	263.14	697.5	-10.0	-44.3	45.3	0.00	0.00	0.00
800.0	7.00	263.14	796.8	-11.4	-56.4	57.5	0.00	0.00	0.00
900.0	7.00	263.14	896.0	-12.9	-68.5	69.7	0.00	0.00	0.00
1,000.0	7.00	263.14	995.3	-14.3	-80.6	81.8	0.00	0.00	0.00
1,100.0	7.00	263.14	1,094.5	-15.8	-92.7	94.0	0.00	0.00	0.00
1,200.0	7.00	263.14	1,193.8	-17.3	-104.8	106.2	0.00	0.00	0.00
1,300.0	7.00	263.14	1,293.0	-18.7	-116.9	118.4	0.00	0.00	0.00
1,400.0	7.00	263.14	1,392.3	-20.2	-129.0	130.6	0.00	0.00	0.00
1,500.0	7.00	263.14	1,491.6	-21.6	-141.1	142.7	0.00	0.00	0.00
1,600.0	7.00	263.14	1,590.8	-23.1	-153.2	154.9	0.00	0.00	0.00
1,700.0	7.00	263.14	1,690.1	-24.5	-165.3	167.1	0.00	0.00	0.00
1,800.0	7.00	263.14	1,789.3	-26.0	-177.4	179.3	0.00	0.00	0.00
1,900.0	7.00	263.14	1,888.6	-27.4	-189.5	191.5	0.00	0.00	0.00
2,000.0	7.00	263.14	1,987.8	-28.9	-201.6	203.7	0.00	0.00	0.00
2,100.0	7.00	263.14	2,087.1	-30.4	-213.7	215.8	0.00	0.00	0.00
2,200.0	7.00	263.14	2,186.3	-31.8	-225.8	228.0	0.00	0.00	0.00
2,300.0	7.00	263.14	2,285.6	-33.3	-237.9	240.2	0.00	0.00	0.00
2,400.0	7.00	263.14	2,384.8	-34.7	-250.0	252.4	0.00	0.00	0.00
2,500.0	7.00	263.14	2,484.1	-36.2	-262.1	264.6	0.00	0.00	0.00
2,600.0	7.00	263.14	2,583.3	-37.6	-274.2	276.8	0.00	0.00	0.00
2,700.0	7.00	263.14	2,682.6	-39.1	-286.3	288.9	0.00	0.00	0.00
2,800.0	7.00	263.14	2,781.9	-40.5	-298.4	301.1	0.00	0.00	0.00
2,900.0	7.00	263.14	2,881.1	-42.0	-310.5	313.3	0.00	0.00	0.00
3,000.0	7.00	263.14	2,980.4	-43.4	-322.6	325.5	0.00	0.00	0.00
3,100.0	7.00	263.14	3,079.6	-44.9	-334.7	337.7	0.00	0.00	0.00
3,200.0	7.00	263.14	3,178.9	-46.4	-346.8	349.8	0.00	0.00	0.00
3,300.0	7.00	263.14	3,278.1	-47.8	-358.9	362.0	0.00	0.00	0.00
Wasatch									
3,373.4	7.00	263.14	3,351.0	-48.9	-367.8	371.0	0.00	0.00	0.00
3,400.0	7.00	263.14	3,377.4	-49.3	-371.0	374.2	0.00	0.00	0.00
3,500.0	7.00	263.14	3,476.6	-50.7	-383.1	386.4	0.00	0.00	0.00
3,600.0	7.00	263.14	3,575.9	-52.2	-395.2	398.6	0.00	0.00	0.00
3,700.0	7.00	263.14	3,675.1	-53.6	-407.4	410.8	0.00	0.00	0.00
3,800.0	7.00	263.14	3,774.4	-55.1	-419.5	422.9	0.00	0.00	0.00
3,900.0	7.00	263.14	3,873.7	-56.5	-431.6	435.1	0.00	0.00	0.00
4,000.0	7.00	263.14	3,972.9	-58.0	-443.7	447.3	0.00	0.00	0.00
4,100.0	7.00	263.14	4,072.2	-59.5	-455.8	459.5	0.00	0.00	0.00
4,200.0	7.00	263.14	4,171.4	-60.9	-467.9	471.7	0.00	0.00	0.00
4,300.0	7.00	263.14	4,270.7	-62.4	-480.0	483.9	0.00	0.00	0.00
4,400.0	7.00	263.14	4,369.9	-63.8	-492.1	496.0	0.00	0.00	0.00
4,500.0	7.00	263.14	4,469.2	-65.3	-504.2	508.2	0.00	0.00	0.00

Database:	EDM 5000.1 Single User Db	Local Co-ordinate Reference:	Well BJU B26 FED 12B-26 496 - Slot BJU B26 FED 12B-26 496
Company:	Caerus Oil & Gas	TVD Reference:	RKB @ 8241.0usft (30')
Project:	Garfield County, CO	MD Reference:	RKB @ 8241.0usft (30')
Site:	BJU B26 496 Pad	North Reference:	True
Well:	BJU B26 FED 12B-26 496	Survey Calculation Method:	Minimum Curvature
Wellbore:	Wellbore #1		
Design:	Design #1		

Planned Survey									
Measured Depth (usft)	Inclination (°)	Azimuth (°)	Vertical Depth (usft)	+N/-S (usft)	+E/-W (usft)	Vertical Section (usft)	Dogleg Rate (°/100usft)	Build Rate (°/100usft)	Turn Rate (°/100usft)
4,600.0	7.00	263.14	4,568.4	-66.7	-516.3	520.4	0.00	0.00	0.00
4,700.0	7.00	263.14	4,667.7	-68.2	-528.4	532.6	0.00	0.00	0.00
4,800.0	7.00	263.14	4,766.9	-69.6	-540.5	544.8	0.00	0.00	0.00
4,900.0	7.00	263.14	4,866.2	-71.1	-552.6	556.9	0.00	0.00	0.00
5,000.0	7.00	263.14	4,965.5	-72.5	-564.7	569.1	0.00	0.00	0.00
5,100.0	7.00	263.14	5,064.7	-74.0	-576.8	581.3	0.00	0.00	0.00
5,200.0	7.00	263.14	5,164.0	-75.5	-588.9	593.5	0.00	0.00	0.00
5,300.0	7.00	263.14	5,263.2	-76.9	-601.0	605.7	0.00	0.00	0.00
5,400.0	7.00	263.14	5,362.5	-78.4	-613.1	617.9	0.00	0.00	0.00
5,500.0	7.00	263.14	5,461.7	-79.8	-625.2	630.0	0.00	0.00	0.00
5,600.0	7.00	263.14	5,561.0	-81.3	-637.3	642.2	0.00	0.00	0.00
5,700.0	7.00	263.14	5,660.2	-82.7	-649.4	654.4	0.00	0.00	0.00
Wasatch G									
5,791.4	7.00	263.14	5,751.0	-84.1	-660.5	665.5	0.00	0.00	0.00
5,800.0	7.00	263.14	5,759.5	-84.2	-661.5	666.6	0.00	0.00	0.00
5,900.0	7.00	263.14	5,858.7	-85.6	-673.6	678.8	0.00	0.00	0.00
6,000.0	7.00	263.14	5,958.0	-87.1	-685.7	691.0	0.00	0.00	0.00
Drop 3°/100'									
6,023.4	7.00	263.14	5,981.2	-87.4	-688.5	693.8	0.00	0.00	0.00
Fort Union									
6,093.6	4.90	263.14	6,051.0	-88.3	-695.8	701.1	3.00	-3.00	0.00
6,100.0	4.70	263.14	6,057.4	-88.4	-696.3	701.6	3.00	-3.00	0.00
6,200.0	1.70	263.14	6,157.2	-89.0	-701.8	707.2	3.00	-3.00	0.00
EOD @ 0.00° INC / 0.00° AZM									
6,256.8	0.00	0.00	6,214.0	-89.1	-702.7	708.0	3.00	-3.00	0.00
6,300.0	0.00	0.00	6,257.2	-89.1	-702.7	708.0	0.00	0.00	0.00
6,400.0	0.00	0.00	6,357.2	-89.1	-702.7	708.0	0.00	0.00	0.00
6,500.0	0.00	0.00	6,457.2	-89.1	-702.7	708.0	0.00	0.00	0.00
6,600.0	0.00	0.00	6,557.2	-89.1	-702.7	708.0	0.00	0.00	0.00
6,700.0	0.00	0.00	6,657.2	-89.1	-702.7	708.0	0.00	0.00	0.00
6,800.0	0.00	0.00	6,757.2	-89.1	-702.7	708.0	0.00	0.00	0.00
6,900.0	0.00	0.00	6,857.2	-89.1	-702.7	708.0	0.00	0.00	0.00
7,000.0	0.00	0.00	6,957.2	-89.1	-702.7	708.0	0.00	0.00	0.00
7,100.0	0.00	0.00	7,057.2	-89.1	-702.7	708.0	0.00	0.00	0.00
7,200.0	0.00	0.00	7,157.2	-89.1	-702.7	708.0	0.00	0.00	0.00
7,300.0	0.00	0.00	7,257.2	-89.1	-702.7	708.0	0.00	0.00	0.00
7,400.0	0.00	0.00	7,357.2	-89.1	-702.7	708.0	0.00	0.00	0.00
7,500.0	0.00	0.00	7,457.2	-89.1	-702.7	708.0	0.00	0.00	0.00
7,600.0	0.00	0.00	7,557.2	-89.1	-702.7	708.0	0.00	0.00	0.00
7,700.0	0.00	0.00	7,657.2	-89.1	-702.7	708.0	0.00	0.00	0.00
7,800.0	0.00	0.00	7,757.2	-89.1	-702.7	708.0	0.00	0.00	0.00
7,900.0	0.00	0.00	7,857.2	-89.1	-702.7	708.0	0.00	0.00	0.00
8,000.0	0.00	0.00	7,957.2	-89.1	-702.7	708.0	0.00	0.00	0.00
Build 1.5°/100' - Ohio Creek / TOG									
8,106.8	0.00	0.00	8,064.0	-89.1	-702.7	708.0	0.00	0.00	0.00
EOB @ 1.48° INC / 250.00° AZM									
8,205.3	1.48	250.00	8,162.5	-89.6	-703.9	709.3	1.50	1.50	0.00
8,300.0	1.48	250.00	8,257.2	-90.4	-706.2	711.7	0.00	0.00	0.00
Williams Fork									
8,398.8	1.48	250.00	8,356.0	-91.3	-708.6	714.2	0.00	0.00	0.00
8,400.0	1.48	250.00	8,357.2	-91.3	-708.6	714.2	0.00	0.00	0.00
8,500.0	1.48	250.00	8,457.1	-92.2	-711.0	716.7	0.00	0.00	0.00

Database:	EDM 5000.1 Single User Db	Local Co-ordinate Reference:	Well BJU B26 FED 12B-26 496 - Slot BJU B26 FED 12B-26 496
Company:	Caerus Oil & Gas	TVD Reference:	RKB @ 8241.0usft (30')
Project:	Garfield County, CO	MD Reference:	RKB @ 8241.0usft (30')
Site:	BJU B26 496 Pad	North Reference:	True
Well:	BJU B26 FED 12B-26 496	Survey Calculation Method:	Minimum Curvature
Wellbore:	Wellbore #1		
Design:	Design #1		

Planned Survey									
Measured Depth (usft)	Inclination (°)	Azimuth (°)	Vertical Depth (usft)	+N/-S (usft)	+E/-W (usft)	Vertical Section (usft)	Dogleg Rate (°/100usft)	Build Rate (°/100usft)	Turn Rate (°/100usft)
8,600.0	1.48	250.00	8,557.1	-93.1	-713.4	719.3	0.00	0.00	0.00
8,700.0	1.48	250.00	8,657.1	-93.9	-715.9	721.8	0.00	0.00	0.00
8,800.0	1.48	250.00	8,757.0	-94.8	-718.3	724.3	0.00	0.00	0.00
8,900.0	1.48	250.00	8,857.0	-95.7	-720.7	726.9	0.00	0.00	0.00
9,000.0	1.48	250.00	8,957.0	-96.6	-723.1	729.4	0.00	0.00	0.00
9,100.0	1.48	250.00	9,056.9	-97.5	-725.6	731.9	0.00	0.00	0.00
9,200.0	1.48	250.00	9,156.9	-98.3	-728.0	734.5	0.00	0.00	0.00
9,300.0	1.48	250.00	9,256.9	-99.2	-730.4	737.0	0.00	0.00	0.00
9,400.0	1.48	250.00	9,356.8	-100.1	-732.8	739.5	0.00	0.00	0.00
9,500.0	1.48	250.00	9,456.8	-101.0	-735.3	742.1	0.00	0.00	0.00
9,600.0	1.48	250.00	9,556.8	-101.9	-737.7	744.6	0.00	0.00	0.00
9,700.0	1.48	250.00	9,656.7	-102.8	-740.1	747.1	0.00	0.00	0.00
9,800.0	1.48	250.00	9,756.7	-103.6	-742.5	749.6	0.00	0.00	0.00
9,900.0	1.48	250.00	9,856.7	-104.5	-745.0	752.2	0.00	0.00	0.00
10,000.0	1.48	250.00	9,956.6	-105.4	-747.4	754.7	0.00	0.00	0.00
10,100.0	1.48	250.00	10,056.6	-106.3	-749.8	757.2	0.00	0.00	0.00
10,200.0	1.48	250.00	10,156.6	-107.2	-752.2	759.8	0.00	0.00	0.00
10,300.0	1.48	250.00	10,256.5	-108.1	-754.7	762.3	0.00	0.00	0.00
10,400.0	1.48	250.00	10,356.5	-108.9	-757.1	764.8	0.00	0.00	0.00
10,500.0	1.48	250.00	10,456.5	-109.8	-759.5	767.4	0.00	0.00	0.00
10,600.0	1.48	250.00	10,556.4	-110.7	-761.9	769.9	0.00	0.00	0.00
10,700.0	1.48	250.00	10,656.4	-111.6	-764.3	772.4	0.00	0.00	0.00
10,800.0	1.48	250.00	10,756.4	-112.5	-766.8	775.0	0.00	0.00	0.00
10,900.0	1.48	250.00	10,856.3	-113.4	-769.2	777.5	0.00	0.00	0.00
11,000.0	1.48	250.00	10,956.3	-114.2	-771.6	780.0	0.00	0.00	0.00
11,100.0	1.48	250.00	11,056.3	-115.1	-774.0	782.5	0.00	0.00	0.00
11,200.0	1.48	250.00	11,156.2	-116.0	-776.5	785.1	0.00	0.00	0.00
11,300.0	1.48	250.00	11,256.2	-116.9	-778.9	787.6	0.00	0.00	0.00
Cameo									
11,331.8	1.48	250.00	11,288.0	-117.2	-779.7	788.4	0.00	0.00	0.00
11,400.0	1.48	250.00	11,356.2	-117.8	-781.3	790.1	0.00	0.00	0.00
11,500.0	1.48	250.00	11,456.1	-118.6	-783.7	792.7	0.00	0.00	0.00
11,600.0	1.48	250.00	11,556.1	-119.5	-786.2	795.2	0.00	0.00	0.00
11,700.0	1.48	250.00	11,656.1	-120.4	-788.6	797.7	0.00	0.00	0.00
11,800.0	1.48	250.00	11,756.0	-121.3	-791.0	800.3	0.00	0.00	0.00
Rollins									
11,832.0	1.48	250.00	11,788.0	-121.6	-791.8	801.1	0.00	0.00	0.00
11,900.0	1.48	250.00	11,856.0	-122.2	-793.4	802.8	0.00	0.00	0.00
12,000.0	1.48	250.00	11,956.0	-123.1	-795.9	805.3	0.00	0.00	0.00
TD @ 12032.0' MD / 11988.0' TVD									
12,032.0	1.48	250.00	11,988.0	-123.3	-796.6	806.1	0.00	0.00	0.00

Database:	EDM 5000.1 Single User Db	Local Co-ordinate Reference:	Well BJU B26 FED 12B-26 496 - Slot BJU B26 FED 12B-26 496
Company:	Caerus Oil & Gas	TVD Reference:	RKB @ 8241.0usft (30')
Project:	Garfield County, CO	MD Reference:	RKB @ 8241.0usft (30')
Site:	BJU B26 496 Pad	North Reference:	True
Well:	BJU B26 FED 12B-26 496	Survey Calculation Method:	Minimum Curvature
Wellbore:	Wellbore #1		
Design:	Design #1		

Design Targets

Target Name - hit/miss target - Shape	Dip Angle (°)	Dip Dir. (°)	TVD (usft)	+N/-S (usft)	+E/-W (usft)	Northing (usft)	Easting (usft)	Latitude	Longitude
12B-26 - OHCR - plan hits target center - Ellipse (radii L100.0 W50.0 on 250.00 azi)	0.00	0.00	8,064.0	-89.1	-702.7	14,421,350.79	2,445,122.43	39.677250	-108.140290
12B-26 - PBHL - plan hits target center - Point	0.00	0.00	11,988.0	-123.3	-796.6	14,421,313.60	2,445,029.60	39.677156	-108.140623

Formations

Measured Depth (usft)	Vertical Depth (usft)	Name	Lithology	Dip (°)	Dip Direction (°)
3,373.4	3,351.0	Wasatch			
5,791.4	5,751.0	Wasatch G			
6,093.6	6,051.0	Fort Union			
8,106.8	8,064.0	Ohio Creek / TOG			
8,398.8	8,356.0	Williams Fork			
11,331.8	11,288.0	Cameo			
11,832.0	11,788.0	Rollins			

Plan Annotations

Measured Depth (usft)	Vertical Depth (usft)	Local Coordinates		Comment
		+N/-S (usft)	+E/-W (usft)	
200.0	200.0	0.0	0.0	Build 3°/100'
366.7	366.5	-3.6	-6.3	EOB @ 5.00° INC / 240.00° AZM / Build 3°/100'
470.1	469.3	-6.6	-16.5	EOB @ 7.00° INC / 263.14° AZM
6,023.4	5,981.2	-87.4	-688.5	Drop 3°/100'
6,256.8	6,214.0	-89.1	-702.7	EOD @ 0.00° INC / 0.00° AZM
8,106.8	8,064.0	-89.1	-702.7	Build 1.5°/100'
8,205.3	8,162.5	-89.6	-703.9	EOB @ 1.48° INC / 250.00° AZM
12,032.0	11,988.0	-123.3	-796.6	TD @ 12032.0' MD / 11988.0' TVD