

Bayswater Exploration & Production, LLC

Well Name: **COT EAST U-30-29HN**

Surface Location: COT 30J Pad Sec.30-T7N-R66W

North American Datum 1983 , US State Plane 1983, Colorado Northern Zone

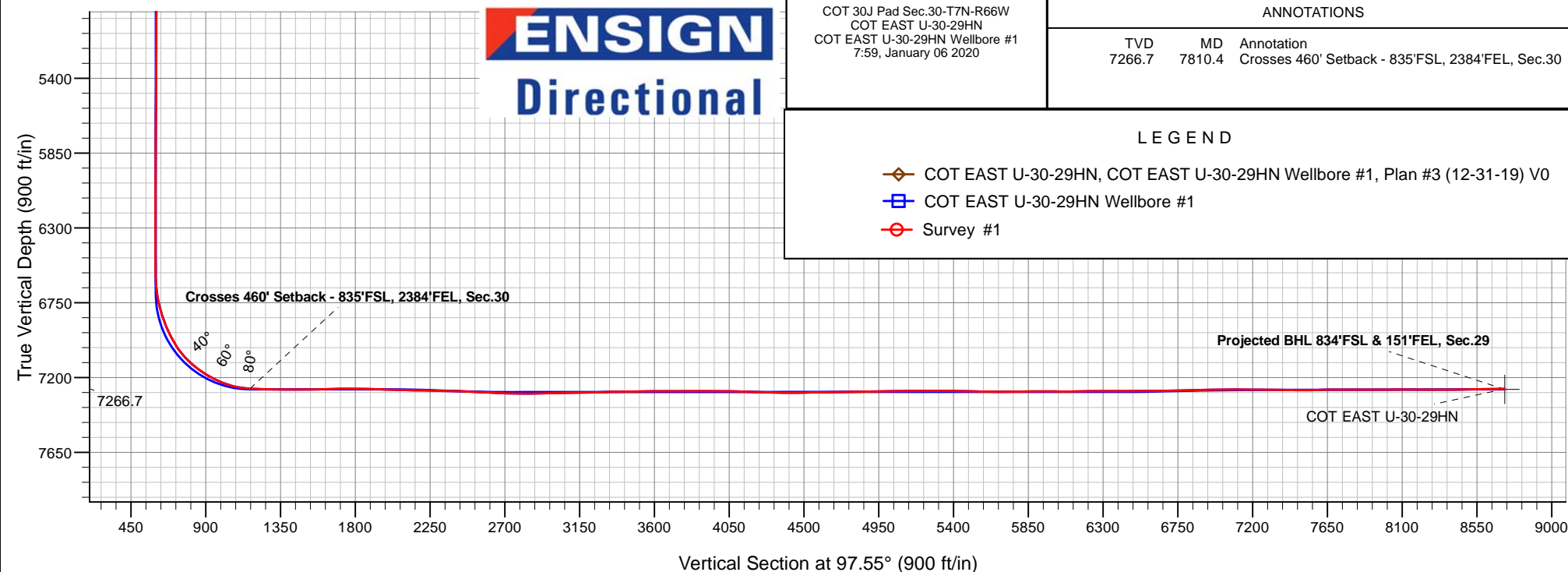
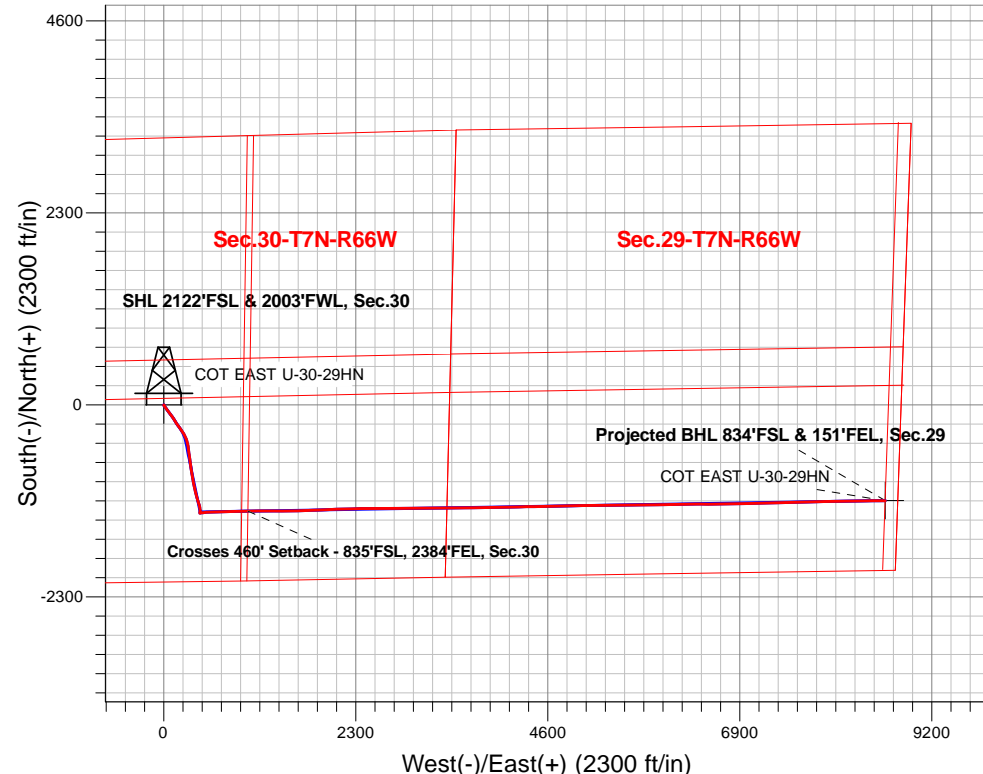
Ground Elevation: 4946.0

+N/-S	+E/-W	Northing	Easting	Latitude	Longitude	Slot
0.0	0.0	1441689.24	3187646.78	40.543876	-104.824809	

Original Well Elev WELL @ 4971.0ft (Original Well Elev)

FINAL SURVEY

Projected Bottom Hole Location
15,447'MD 7269'TVD 1148'S & 8641'E of SHL
91.01 degree Incl @ 89.67 degree AZM





Bayswater Exploration & Production, LLC

SEC.30-T7N-R66W

COT 30J Pad Sec.30-T7N-R66W

COT EAST U-30-29HN

COT EAST U-30-29HN Wellbore #1

Survey: Survey #1

Standard Survey Report

06 January, 2020



BAYSWATER
EXPLORATION & PRODUCTION, LLC

Company:	Bayswater Exploration & Production, LLC	Local Co-ordinate Reference:	Well COT EAST U-30-29HN
Project:	SEC.30-T7N-R66W	TVD Reference:	WELL @ 4971.0ft (Original Well Elev)
Site:	COT 30J Pad Sec.30-T7N-R66W	MD Reference:	WELL @ 4971.0ft (Original Well Elev)
Well:	COT EAST U-30-29HN	North Reference:	True
Wellbore:	COT EAST U-30-29HN Wellbore #1	Survey Calculation Method:	Minimum Curvature
Design:	COT EAST U-30-29HN Wellbore #1	Database:	US_EDM

Project	SEC.30-T7N-R66W, Weld County, CO		
Map System:	US State Plane 1983	System Datum:	Mean Sea Level
Geo Datum:	North American Datum 1983		Using Well Reference Point
Map Zone:	Colorado Northern Zone		Using geodetic scale factor

Site		COT 30J Pad Sec.30-T7N-R66W						
Site Position:		Northing:	1,441,808.15	usft	Latitude:	40.544203		
From:	Lat/Long	Easting:	3,187,616.69	usft	Longitude:	-104.824914		
Position Uncertainty:	0.0	ft	Slot Radius:	13-3/16	"	Grid Convergence:	0.44	°

Well	COT EAST U-30-29HN					
Well Position	+N/-S	0.0 ft	Northing:	1,441,689.24 usft	Latitude:	40.543876
	+E/-W	0.0 ft	Easting:	3,187,646.78 usft	Longitude:	-104.824809
Position Uncertainty		0.0 ft	Wellhead Elevation:	0.0 ft	Ground Level:	4,946.0 ft

Wellbore	COT EAST U-30-29HN Wellbore #1				
Magnetics	Model Name	Sample Date	Declination (°)	Dip Angle (°)	Field Strength (nT)
	HDGM	12/31/2019	7.93	66.88	52,224

Design	COT EAST U-30-29HN Wellbore #1				
Audit Notes:					
Version:	1.0	Phase:	ACTUAL	Tie On Depth:	0.0
Vertical Section:	Depth From (TVD) (ft)	+N/-S (ft)	+E/-W (ft)	Direction (°)	
	0.0	0.0	0.0	97.55	

Survey Program	Date	1/6/2020			
From (ft)	To (ft)	Survey (Wellbore)	Tool Name	Description	
121.0	15,447.0	Survey #1 (COT EAST U-30-29HN Wellbo	MWD	MWD - Standard	

Survey										
Measured Depth (ft)	Inclination (°)	Azimuth (°)	Vertical Depth (ft)	+N/-S (ft)	+E/-W (ft)	Vertical Section (ft)	Dogleg Rate (°/100usft)	Build Rate (°/100usft)	Turn Rate (°/100usft)	
0.0	0.00	0.00	0.0	0.0	0.0	0.0	0.00	0.00	0.00	
121.0	0.30	116.90	121.0	-0.1	0.3	0.3	0.25	0.25	0.00	
215.0	1.00	162.10	215.0	-1.0	0.8	0.9	0.87	0.74	48.09	
309.0	2.30	148.90	309.0	-3.4	2.0	2.4	1.43	1.38	-14.04	
404.0	4.50	151.20	403.8	-8.3	4.8	5.8	2.32	2.32	2.42	
498.0	5.70	147.00	497.4	-15.5	9.1	11.0	1.34	1.28	-4.47	
593.0	8.30	146.50	591.7	-25.2	15.4	18.6	2.74	2.74	-0.53	
687.0	10.70	144.40	684.4	-37.9	24.3	29.0	2.58	2.55	-2.23	
782.0	12.90	142.60	777.4	-53.5	35.8	42.6	2.35	2.32	-1.89	
878.0	14.60	143.80	870.6	-71.8	49.5	58.5	1.80	1.77	1.25	

Company:	Bayswater Exploration & Production, LLC	Local Co-ordinate Reference:	Well COT EAST U-30-29HN
Project:	SEC.30-T7N-R66W	TVD Reference:	WELL @ 4971.0ft (Original Well Elev)
Site:	COT 30J Pad Sec.30-T7N-R66W	MD Reference:	WELL @ 4971.0ft (Original Well Elev)
Well:	COT EAST U-30-29HN	North Reference:	True
Wellbore:	COT EAST U-30-29HN Wellbore #1	Survey Calculation Method:	Minimum Curvature
Design:	COT EAST U-30-29HN Wellbore #1	Database:	US_EDM

Survey									
Measured Depth (ft)	Inclination (°)	Azimuth (°)	Vertical Depth (ft)	+N/-S (ft)	+E/-W (ft)	Vertical Section (ft)	Dogleg Rate (°/100usft)	Build Rate (°/100usft)	Turn Rate (°/100usft)
973.0	16.00	144.50	962.3	-92.1	64.2	75.7	1.49	1.47	0.74
1,068.0	16.70	143.70	1,053.4	-113.8	79.9	94.1	0.77	0.74	-0.84
1,162.0	17.80	145.10	1,143.2	-136.4	96.1	113.2	1.25	1.17	1.49
1,257.0	19.70	145.60	1,233.1	-161.6	113.4	133.7	2.01	2.00	0.53
1,351.0	21.20	147.20	1,321.2	-188.9	131.6	155.3	1.70	1.60	1.70
1,446.0	21.60	146.50	1,409.7	-217.9	150.5	177.9	0.50	0.42	-0.74
1,504.0	22.00	146.10	1,463.5	-235.9	162.5	192.1	0.74	0.69	-0.69
1,666.0	21.72	145.04	1,613.9	-285.6	196.6	232.4	0.30	-0.17	-0.65
1,761.0	21.46	144.69	1,702.2	-314.2	216.7	256.1	0.31	-0.27	-0.37
1,855.0	21.63	146.62	1,789.6	-342.7	236.2	279.2	0.78	0.18	2.05
1,950.0	21.37	152.25	1,878.0	-372.6	253.9	300.7	2.19	-0.27	5.93
2,045.0	21.28	158.57	1,966.5	-404.0	268.2	319.0	2.42	-0.09	6.65
2,140.0	21.72	167.19	2,055.0	-437.2	278.4	333.5	3.35	0.46	9.07
2,235.0	22.16	171.23	2,143.1	-472.1	285.1	344.6	1.65	0.46	4.25
2,329.0	23.13	171.76	2,229.8	-507.8	290.4	354.7	1.05	1.03	0.56
2,424.0	22.86	171.06	2,317.3	-544.5	296.0	365.0	0.40	-0.28	-0.74
2,519.0	22.34	170.53	2,405.0	-580.6	301.8	375.5	0.59	-0.55	-0.56
2,613.0	23.74	172.46	2,491.5	-617.0	307.2	385.7	1.69	1.49	2.05
2,707.0	23.13	172.11	2,577.7	-654.0	312.2	395.5	0.67	-0.65	-0.37
2,802.0	22.86	172.11	2,665.2	-690.8	317.3	405.4	0.28	-0.28	0.00
2,897.0	22.60	172.29	2,752.8	-727.1	322.3	415.1	0.28	-0.27	0.19
2,991.0	22.34	171.93	2,839.7	-762.7	327.2	424.7	0.31	-0.28	-0.38
3,086.0	22.16	171.93	2,927.6	-798.3	332.3	434.4	0.19	-0.19	0.00
3,180.0	21.81	171.58	3,014.8	-833.2	337.3	443.9	0.40	-0.37	-0.37
3,274.0	21.19	170.70	3,102.2	-867.2	342.6	453.7	0.74	-0.66	-0.94
3,392.0	22.34	168.95	3,211.8	-910.3	350.4	467.0	1.12	0.97	-1.48
3,487.0	22.07	167.89	3,299.8	-945.4	357.6	478.8	0.51	-0.28	-1.12
3,581.0	21.37	167.01	3,387.1	-979.4	365.1	490.7	0.82	-0.74	-0.94
3,676.0	22.07	167.89	3,475.3	-1,013.7	372.8	502.8	0.81	0.74	0.93
3,771.0	20.93	166.84	3,563.7	-1,047.7	380.4	514.8	1.27	-1.20	-1.11
3,865.0	19.87	165.25	3,651.8	-1,079.5	388.3	526.8	1.27	-1.13	-1.69
3,959.0	18.55	163.50	3,740.6	-1,109.3	396.6	539.0	1.53	-1.40	-1.86
4,053.0	17.94	162.44	3,829.9	-1,137.4	405.2	551.2	0.74	-0.65	-1.13
4,148.0	18.11	162.62	3,920.2	-1,165.4	414.0	563.7	0.19	0.18	0.19
4,242.0	16.00	165.08	4,010.1	-1,191.9	421.7	574.8	2.37	-2.24	2.62
4,337.0	12.75	167.36	4,102.1	-1,214.8	427.4	583.4	3.47	-3.42	2.40
4,432.0	9.32	171.41	4,195.3	-1,232.6	430.8	589.2	3.70	-3.61	4.26
4,526.0	8.88	171.06	4,288.1	-1,247.3	433.1	593.3	0.47	-0.47	-0.37
4,621.0	7.12	177.56	4,382.2	-1,260.5	434.5	596.4	2.08	-1.85	6.84
4,716.0	5.54	175.80	4,476.6	-1,270.9	435.1	598.4	1.68	-1.66	-1.85
4,810.0	3.52	174.22	4,570.3	-1,278.3	435.7	600.0	2.15	-2.15	-1.68
4,904.0	1.23	148.73	4,664.2	-1,282.0	436.5	601.3	2.62	-2.44	-27.12
4,999.0	1.49	166.13	4,759.2	-1,284.1	437.3	602.4	0.51	0.27	18.32
5,094.0	0.35	205.16	4,854.2	-1,285.6	437.5	602.7	1.30	-1.20	41.08

Company:	Bayswater Exploration & Production, LLC	Local Co-ordinate Reference:	Well COT EAST U-30-29HN
Project:	SEC.30-T7N-R66W	TVD Reference:	WELL @ 4971.0ft (Original Well Elev)
Site:	COT 30J Pad Sec.30-T7N-R66W	MD Reference:	WELL @ 4971.0ft (Original Well Elev)
Well:	COT EAST U-30-29HN	North Reference:	True
Wellbore:	COT EAST U-30-29HN Wellbore #1	Survey Calculation Method:	Minimum Curvature
Design:	COT EAST U-30-29HN Wellbore #1	Database:	US_EDM

Survey									
Measured Depth (ft)	Inclination (°)	Azimuth (°)	Vertical Depth (ft)	+N/-S (ft)	+E/-W (ft)	Vertical Section (ft)	Dogleg Rate (°/100usft)	Build Rate (°/100usft)	Turn Rate (°/100usft)
5,188.0	0.53	216.06	4,948.2	-1,286.2	437.1	602.4	0.21	0.19	11.60
5,283.0	0.35	206.04	5,043.2	-1,286.8	436.7	602.1	0.21	-0.19	-10.55
5,378.0	0.26	201.99	5,138.2	-1,287.3	436.5	602.0	0.10	-0.09	-4.26
5,472.0	0.35	232.40	5,232.2	-1,287.6	436.2	601.7	0.19	0.10	32.35
5,567.0	0.44	244.53	5,327.2	-1,288.0	435.7	601.2	0.13	0.09	12.77
5,662.0	0.53	230.82	5,422.2	-1,288.4	435.0	600.6	0.15	0.09	-14.43
5,756.0	0.62	239.08	5,516.2	-1,288.9	434.2	599.9	0.13	0.10	8.79
5,851.0	0.70	235.04	5,611.2	-1,289.5	433.3	599.1	0.10	0.08	-4.25
5,946.0	0.62	218.87	5,706.2	-1,290.3	432.5	598.4	0.21	-0.08	-17.02
6,041.0	0.79	209.55	5,801.2	-1,291.2	431.9	597.9	0.22	0.18	-9.81
6,135.0	0.88	205.51	5,895.2	-1,292.5	431.2	597.4	0.11	0.10	-4.30
6,230.0	0.53	206.74	5,990.2	-1,293.5	430.7	597.0	0.37	-0.37	1.29
6,324.0	0.62	199.53	6,084.1	-1,294.4	430.4	596.8	0.12	0.10	-7.67
6,419.0	0.35	189.34	6,179.1	-1,295.1	430.1	596.7	0.30	-0.28	-10.73
6,514.0	0.35	183.71	6,274.1	-1,295.7	430.1	596.7	0.04	0.00	-5.93
6,608.0	0.35	192.15	6,368.1	-1,296.3	430.0	596.7	0.05	0.00	8.98
6,703.0	0.35	185.82	6,463.1	-1,296.9	429.9	596.7	0.04	0.00	-6.66
6,797.0	0.35	160.16	6,557.1	-1,297.4	430.0	596.8	0.17	0.00	-27.30
6,892.0	5.72	72.62	6,652.0	-1,296.3	434.6	601.2	6.02	5.65	-92.15
6,987.0	12.31	84.22	6,745.8	-1,293.8	449.2	615.4	7.16	6.94	12.21
7,081.0	19.26	81.76	6,836.2	-1,290.6	474.6	640.1	7.43	7.39	-2.62
7,176.0	25.50	85.45	6,924.0	-1,286.7	510.5	675.2	6.73	6.57	3.88
7,270.0	32.62	87.38	7,006.1	-1,284.0	556.0	720.0	7.64	7.57	2.05
7,365.0	42.82	88.44	7,081.1	-1,281.9	614.0	777.2	10.76	10.74	1.12
7,459.0	53.64	88.61	7,143.7	-1,280.1	684.0	846.4	11.51	11.51	0.18
7,554.0	60.76	89.14	7,195.1	-1,278.6	763.8	925.3	7.51	7.49	0.56
7,649.0	69.03	88.09	7,235.4	-1,276.5	849.7	1,010.2	8.76	8.71	-1.11
7,743.0	81.34	88.61	7,259.3	-1,273.9	940.4	1,099.7	13.11	13.10	0.55
7,810.4	86.21	89.12	7,266.7	-1,272.5	1,007.3	1,165.9	7.26	7.22	0.75
Crosses 460' Setback - 835'FSL, 2384'FEL, Sec.30									
7,838.0	88.20	89.32	7,268.0	-1,272.2	1,034.9	1,193.2	7.26	7.22	0.74
7,933.0	88.20	89.14	7,271.0	-1,270.9	1,129.9	1,287.1	0.19	0.00	-0.19
8,027.0	90.13	90.55	7,272.4	-1,270.6	1,223.8	1,380.3	2.54	2.05	1.50
8,122.0	89.87	89.84	7,272.4	-1,270.9	1,318.8	1,474.5	0.80	-0.27	-0.75
8,217.0	91.19	89.84	7,271.5	-1,270.7	1,413.8	1,568.6	1.39	1.39	0.00
8,311.0	91.19	89.67	7,269.5	-1,270.3	1,507.8	1,661.7	0.18	0.00	-0.18
8,406.0	90.92	88.79	7,267.8	-1,269.0	1,602.8	1,755.7	0.97	-0.28	-0.93
8,500.0	88.11	87.73	7,268.6	-1,266.1	1,696.7	1,848.5	3.19	-2.99	-1.13
8,595.0	88.37	87.73	7,271.5	-1,262.4	1,791.6	1,942.0	0.27	0.27	0.00
8,689.0	88.99	87.73	7,273.7	-1,258.7	1,885.5	2,034.6	0.66	0.66	0.00
8,784.0	88.90	87.03	7,275.4	-1,254.3	1,980.4	2,128.1	0.74	-0.09	-0.74
8,879.0	88.55	86.86	7,277.5	-1,249.3	2,075.2	2,221.5	0.41	-0.37	-0.18
8,973.0	88.64	88.97	7,279.8	-1,245.8	2,169.1	2,314.1	2.25	0.10	2.24

Company:	Bayswater Exploration & Production, LLC	Local Co-ordinate Reference:	Well COT EAST U-30-29HN
Project:	SEC.30-T7N-R66W	TVD Reference:	WELL @ 4971.0ft (Original Well Elev)
Site:	COT 30J Pad Sec.30-T7N-R66W	MD Reference:	WELL @ 4971.0ft (Original Well Elev)
Well:	COT EAST U-30-29HN	North Reference:	True
Wellbore:	COT EAST U-30-29HN Wellbore #1	Survey Calculation Method:	Minimum Curvature
Design:	COT EAST U-30-29HN Wellbore #1	Database:	US_EDM

Survey									
Measured Depth (ft)	Inclination (°)	Azimuth (°)	Vertical Depth (ft)	+N/-S (ft)	+E/-W (ft)	Vertical Section (ft)	Dogleg Rate (°/100usft)	Build Rate (°/100usft)	Turn Rate (°/100usft)
9,068.0	88.37	89.32	7,282.3	-1,244.4	2,264.1	2,408.0	0.47	-0.28	0.37
9,162.0	87.76	89.14	7,285.5	-1,243.2	2,358.0	2,501.0	0.68	-0.65	-0.19
9,257.0	87.32	89.14	7,289.5	-1,241.7	2,452.9	2,594.9	0.46	-0.46	0.00
9,351.0	87.05	89.67	7,294.2	-1,240.8	2,546.8	2,687.8	0.63	-0.29	0.56
9,446.0	89.87	89.67	7,296.7	-1,240.2	2,641.8	2,781.9	2.97	2.97	0.00
9,541.0	90.75	89.49	7,296.2	-1,239.5	2,736.8	2,876.0	0.95	0.93	-0.19
9,636.0	91.19	89.49	7,294.6	-1,238.7	2,831.7	2,970.0	0.46	0.46	0.00
9,730.0	91.10	89.67	7,292.7	-1,238.0	2,925.7	3,063.1	0.21	-0.10	0.19
9,825.0	91.19	90.02	7,290.8	-1,237.7	3,020.7	3,157.2	0.38	0.09	0.37
9,920.0	91.36	89.67	7,288.7	-1,237.5	3,115.7	3,251.3	0.41	0.18	-0.37
10,015.0	92.15	90.72	7,285.8	-1,237.8	3,210.6	3,345.5	1.38	0.83	1.11
10,109.0	89.78	89.32	7,284.2	-1,237.8	3,304.6	3,438.7	2.93	-2.52	-1.49
10,204.0	90.75	89.67	7,283.8	-1,237.0	3,399.6	3,532.7	1.09	1.02	0.37
10,298.0	90.66	88.44	7,282.6	-1,235.4	3,493.6	3,625.7	1.31	-0.10	-1.31
10,393.0	89.78	88.61	7,282.3	-1,233.0	3,588.6	3,719.5	0.94	-0.93	0.18
10,487.0	90.66	88.61	7,281.9	-1,230.7	3,682.5	3,812.4	0.94	0.94	0.00
10,582.0	88.99	89.32	7,282.2	-1,229.0	3,777.5	3,906.3	1.91	-1.76	0.75
10,676.0	90.22	89.49	7,282.8	-1,228.0	3,871.5	3,999.3	1.32	1.31	0.18
10,771.0	88.29	89.32	7,284.1	-1,227.0	3,966.5	4,093.4	2.04	-2.03	-0.18
10,865.0	88.90	88.97	7,286.4	-1,225.6	4,060.4	4,186.3	0.75	0.65	-0.37
10,960.0	88.20	88.61	7,288.8	-1,223.6	4,155.4	4,280.2	0.83	-0.74	-0.38
11,054.0	88.20	88.26	7,291.7	-1,221.1	4,249.3	4,373.0	0.37	0.00	-0.37
11,149.0	91.45	89.32	7,292.0	-1,219.1	4,344.3	4,466.8	3.60	3.42	1.12
11,243.0	91.98	89.49	7,289.2	-1,218.1	4,438.2	4,559.8	0.59	0.56	0.18
11,339.0	90.04	88.79	7,287.5	-1,216.6	4,534.2	4,654.8	2.15	-2.02	-0.73
11,434.0	90.48	88.97	7,287.1	-1,214.8	4,629.2	4,748.7	0.50	0.46	0.19
11,529.0	90.84	88.97	7,286.0	-1,213.1	4,724.1	4,842.6	0.38	0.38	0.00
11,623.0	91.54	88.61	7,284.0	-1,211.1	4,818.1	4,935.5	0.84	0.74	-0.38
11,717.0	90.48	88.26	7,282.4	-1,208.5	4,912.1	5,028.3	1.19	-1.13	-0.37
11,813.0	91.19	88.09	7,281.0	-1,205.5	5,008.0	5,123.0	0.76	0.74	-0.18
11,907.0	89.52	89.67	7,280.4	-1,203.6	5,102.0	5,215.9	2.45	-1.78	1.68
12,002.0	90.66	89.49	7,280.2	-1,202.9	5,197.0	5,310.0	1.21	1.20	-0.19
12,096.0	88.64	89.49	7,280.8	-1,202.1	5,291.0	5,403.1	2.15	-2.15	0.00
12,191.0	88.99	89.32	7,282.8	-1,201.1	5,385.9	5,497.1	0.41	0.37	-0.18
12,286.0	88.90	89.14	7,284.5	-1,199.8	5,480.9	5,591.1	0.21	-0.09	-0.19
12,380.0	89.87	90.02	7,285.5	-1,199.1	5,574.9	5,684.2	1.39	1.03	0.94
12,475.0	90.75	90.20	7,285.0	-1,199.3	5,669.9	5,778.4	0.95	0.93	0.19
12,569.0	91.28	90.02	7,283.4	-1,199.5	5,763.9	5,871.5	0.60	0.56	-0.19
12,664.0	88.72	88.09	7,283.4	-1,197.9	5,858.9	5,965.5	3.37	-2.69	-2.03
12,758.0	89.78	88.44	7,284.6	-1,195.1	5,952.8	6,058.2	1.19	1.13	0.37
12,852.0	90.84	88.09	7,284.1	-1,192.2	6,046.8	6,151.0	1.19	1.13	-0.37
12,947.0	91.45	88.09	7,282.2	-1,189.1	6,141.7	6,244.7	0.64	0.64	0.00
13,042.0	89.34	89.67	7,281.5	-1,187.2	6,236.7	6,338.6	2.77	-2.22	1.66
13,137.0	90.31	89.49	7,281.8	-1,186.5	6,331.6	6,432.7	1.04	1.02	-0.19

Company:	Bayswater Exploration & Production, LLC	Local Co-ordinate Reference:	Well COT EAST U-30-29HN
Project:	SEC.30-T7N-R66W	TVD Reference:	WELL @ 4971.0ft (Original Well Elev)
Site:	COT 30J Pad Sec.30-T7N-R66W	MD Reference:	WELL @ 4971.0ft (Original Well Elev)
Well:	COT EAST U-30-29HN	North Reference:	True
Wellbore:	COT EAST U-30-29HN Wellbore #1	Survey Calculation Method:	Minimum Curvature
Design:	COT EAST U-30-29HN Wellbore #1	Database:	US_EDM

Survey									
Measured Depth (ft)	Inclination (°)	Azimuth (°)	Vertical Depth (ft)	+N/-S (ft)	+E/-W (ft)	Vertical Section (ft)	Dogleg Rate (°/100usft)	Build Rate (°/100usft)	Turn Rate (°/100usft)
13,231.0	90.13	90.90	7,281.5	-1,186.9	6,425.6	6,525.9	1.51	-0.19	1.50
13,326.0	90.66	90.72	7,280.8	-1,188.2	6,520.6	6,620.2	0.59	0.56	-0.19
13,421.0	91.01	90.90	7,279.4	-1,189.5	6,615.6	6,714.6	0.41	0.37	0.19
13,515.0	91.28	88.97	7,277.5	-1,189.4	6,709.6	6,807.7	2.07	0.29	-2.05
13,610.0	92.33	89.14	7,274.6	-1,187.9	6,804.5	6,901.6	1.12	1.11	0.18
13,705.0	90.13	87.91	7,272.5	-1,185.4	6,899.5	6,995.4	2.65	-2.32	-1.29
13,800.0	90.66	88.09	7,271.9	-1,182.1	6,994.4	7,089.1	0.59	0.56	0.19
13,895.0	88.55	87.91	7,272.5	-1,178.8	7,089.3	7,182.8	2.23	-2.22	-0.19
13,989.0	89.52	87.56	7,274.1	-1,175.1	7,183.3	7,275.4	1.10	1.03	-0.37
14,084.0	89.96	87.21	7,274.5	-1,170.7	7,278.2	7,368.9	0.59	0.46	-0.37
14,179.0	89.08	89.14	7,275.3	-1,167.7	7,373.1	7,462.6	2.23	-0.93	2.03
14,273.0	90.84	89.14	7,275.4	-1,166.3	7,467.1	7,555.6	1.87	1.87	0.00
14,368.0	91.63	89.14	7,273.3	-1,164.9	7,562.0	7,649.6	0.83	0.83	0.00
14,462.0	89.08	89.32	7,272.8	-1,163.6	7,656.0	7,742.6	2.72	-2.71	0.19
14,557.0	90.57	90.02	7,273.0	-1,163.1	7,751.0	7,836.7	1.73	1.57	0.74
14,651.0	89.69	88.61	7,272.8	-1,161.9	7,845.0	7,929.7	1.77	-0.94	-1.50
14,746.0	90.40	88.97	7,272.8	-1,159.9	7,940.0	8,023.6	0.84	0.75	0.38
14,840.0	90.04	88.44	7,272.4	-1,157.8	8,034.0	8,116.5	0.68	-0.38	-0.56
14,935.0	89.78	87.73	7,272.5	-1,154.6	8,128.9	8,210.2	0.80	-0.27	-0.75
15,030.0	89.43	87.03	7,273.2	-1,150.3	8,223.8	8,303.7	0.82	-0.37	-0.74
15,124.0	91.01	90.72	7,272.8	-1,148.5	8,317.8	8,396.6	4.27	1.68	3.93
15,218.0	90.66	90.02	7,271.5	-1,149.1	8,411.8	8,489.8	0.83	-0.37	-0.74
15,313.0	90.48	89.84	7,270.5	-1,148.9	8,506.8	8,584.0	0.27	-0.19	-0.19
15,387.0	91.01	89.67	7,269.6	-1,148.6	8,580.7	8,657.3	0.75	0.72	-0.23
15,447.0	91.01	89.67	7,268.5	-1,148.3	8,640.7	8,716.7	0.00	0.00	0.00

Design Targets									
Target Name	Dip Angle (°)	Dip Dir. (°)	TVD (ft)	+N/-S (ft)	+E/-W (ft)	Northing (usft)	Easting (usft)	Latitude	Longitude
- hit/miss target									
- Shape									
SHL 2122'FSL & 2003'F	0.00	0.00	1.0	0.0	0.0	1,441,689.25	3,187,646.78	40.543876	-104.824809
- survey hits target center									
- Point									
Projected BHL 834'FSL	0.00	0.00	7,271.0	-1,146.1	8,641.7	1,440,609.02	3,196,296.72	40.540726	-104.793717
- survey misses target center by 3.5ft at 15447.0ft MD (7268.5 TVD, -1148.3 N, 8640.7 E)									
- Point									

Survey Annotations				
Measured Depth (ft)	Vertical Depth (ft)	+N/-S (ft)	+E/-W (ft)	Comment
7,810.4	7,266.7	-1,272.5	1,007.3	Crosses 460' Setback - 835'FSL, 2384'FEL, Sec.30

Company:	Bayswater Exploration & Production, LLC	Local Co-ordinate Reference:	Well COT EAST U-30-29HN
Project:	SEC.30-T7N-R66W	TVD Reference:	WELL @ 4971.0ft (Original Well Elev)
Site:	COT 30J Pad Sec.30-T7N-R66W	MD Reference:	WELL @ 4971.0ft (Original Well Elev)
Well:	COT EAST U-30-29HN	North Reference:	True
Wellbore:	COT EAST U-30-29HN Wellbore #1	Survey Calculation Method:	Minimum Curvature
Design:	COT EAST U-30-29HN Wellbore #1	Database:	US_EDM

Checked By: _____	Approved By: _____	Date: _____
-------------------	--------------------	-------------