

Bayswater Exploration & Production, LLC

Well Name: **COT EAST O-30-29HN**

Surface Location: COT 30J Pad Sec.30-T7N-R66W

North American Datum 1983 , US State Plane 1983, Colorado Northern Zone

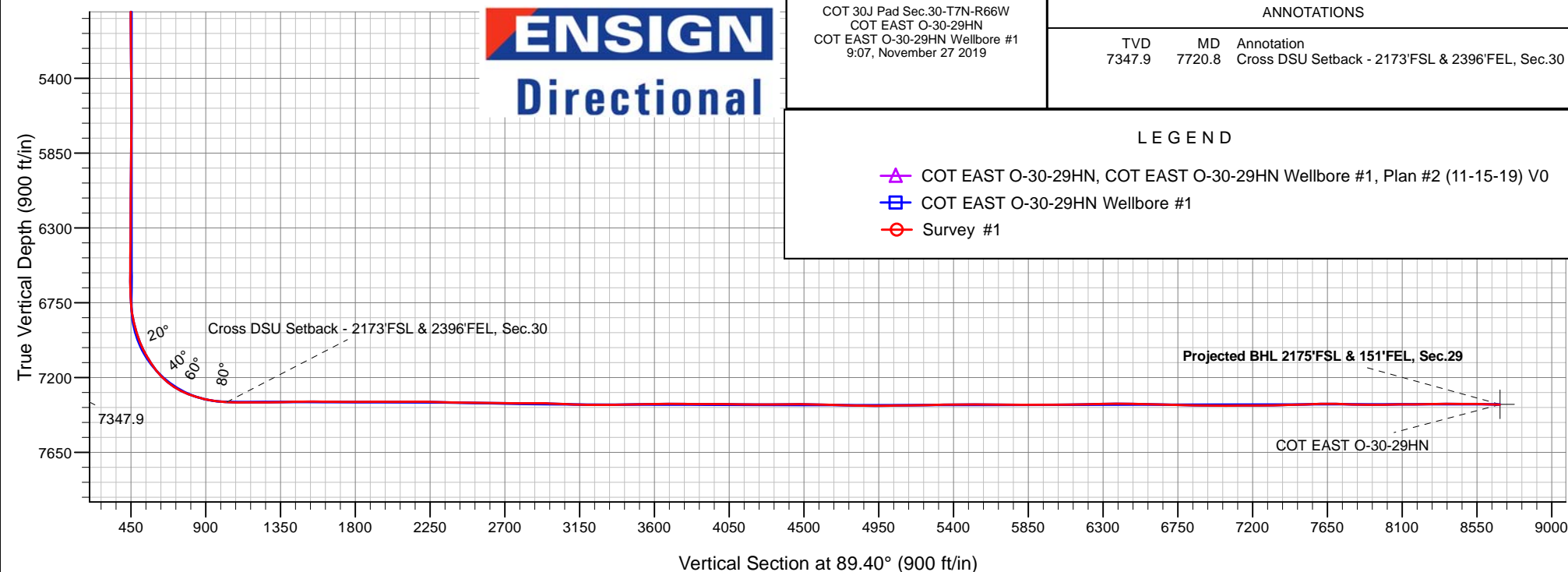
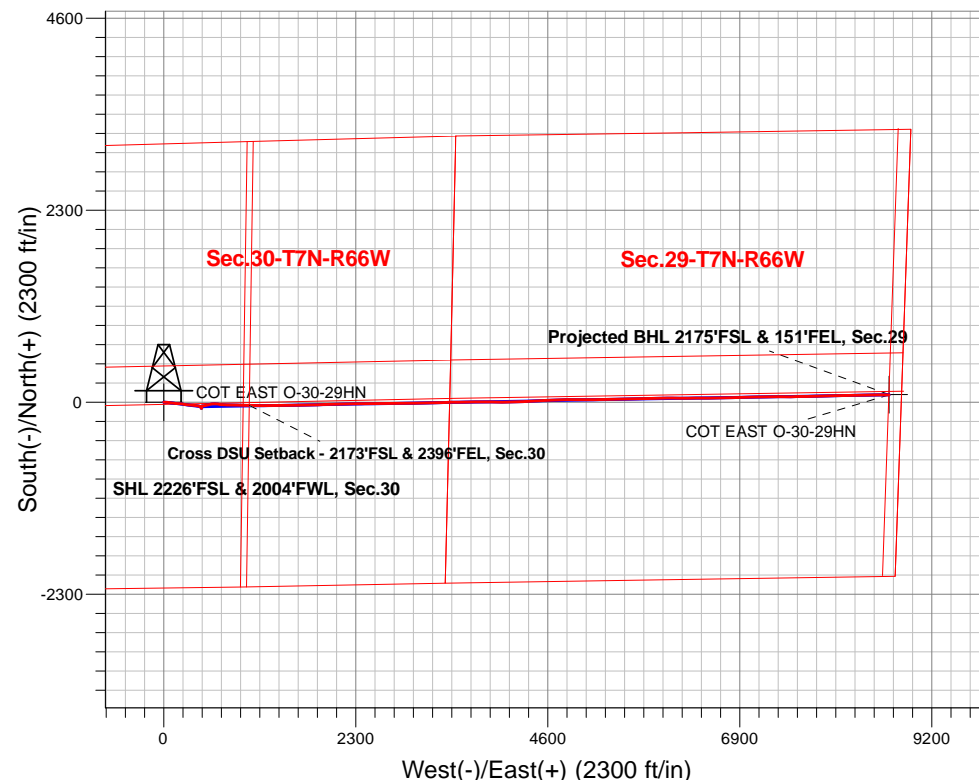
Ground Elevation: 4946.0

+N/-S	+E/-W	Northing	Easting	Latitude	Longitude	Slot
0.0	0.0	1441793.44	3187647.10	40.544162	-104.824805	

Original Well Elev WELL @ 4971.0ft (Original Well Elev)

FINAL SURVEY

Projected Bottom Hole Location
15,385'MD 7363'TVD 90°N & 8687'E of SHL
88.29 degree Incl @ 89.34 degree AZM





Bayswater Exploration & Production, LLC

SEC.30-T7N-R66W

COT 30J Pad Sec.30-T7N-R66W

COT EAST O-30-29HN

COT EAST O-30-29HN Wellbore #1

Survey: Survey #1

Standard Survey Report

27 November, 2019



BAYSWATER
EXPLORATION & PRODUCTION, LLC

Company:	Bayswater Exploration & Production, LLC	Local Co-ordinate Reference:	Well COT EAST O-30-29HN
Project:	SEC.30-T7N-R66W	TVD Reference:	WELL @ 4971.0ft (Original Well Elev)
Site:	COT 30J Pad Sec.30-T7N-R66W	MD Reference:	WELL @ 4971.0ft (Original Well Elev)
Well:	COT EAST O-30-29HN	North Reference:	True
Wellbore:	COT EAST O-30-29HN Wellbore #1	Survey Calculation Method:	Minimum Curvature
Design:	COT EAST O-30-29HN Wellbore #1	Database:	US_EDM

Project	SEC.30-T7N-R66W, Weld County, CO		
Map System:	US State Plane 1983	System Datum:	Mean Sea Level
Geo Datum:	North American Datum 1983		Using Well Reference Point
Map Zone:	Colorado Northern Zone		Using geodetic scale factor

Site	COT 30J Pad Sec.30-T7N-R66W				
Site Position:		Northing:	1,441,808.15 usft	Latitude:	40.544203
From:	Lat/Long	Easting:	3,187,616.69 usft	Longitude:	-104.824914
Position Uncertainty:	0.0 ft	Slot Radius:	13-3/16 "	Grid Convergence:	0.44 °

Well	COT EAST O-30-29HN					
Well Position	+N/-S	0.0 ft	Northing:	1,441,793.44 usft	Latitude:	40.544162
	+E/-W	0.0 ft	Easting:	3,187,647.10 usft	Longitude:	-104.824805
Position Uncertainty		0.0 ft	Wellhead Elevation:	0.0 ft	Ground Level:	4,946.0 ft

Wellbore	COT EAST O-30-29HN Wellbore #1				
Magnetics	Model Name	Sample Date	Declination (°)	Dip Angle (°)	Field Strength (nT)
	HDGM	11/15/2019	7.95	66.90	52,239

Design	COT EAST O-30-29HN Wellbore #1				
Audit Notes:					
Version:	1.0	Phase:	ACTUAL	Tie On Depth:	0.0
Vertical Section:	Depth From (TVD) (ft)	+N/-S (ft)	+E/-W (ft)	Direction (°)	
	7,361.0	0.0	0.0	89.40	

Survey Program	Date	11/27/2019			
From (ft)	To (ft)	Survey (Wellbore)	Tool Name	Description	
215.0	15,385.0	Survey #1 (COT EAST O-30-29HN Wellbo	MWD	MWD - Standard	

Survey										
Measured Depth (ft)	Inclination (°)	Azimuth (°)	Vertical Depth (ft)	+N/-S (ft)	+E/-W (ft)	Vertical Section (ft)	Dogleg Rate (°/100usft)	Build Rate (°/100usft)	Turn Rate (°/100usft)	
0.0	0.00	0.00	0.0	0.0	0.0	0.0	0.00	0.00	0.00	
215.0	0.20	175.30	215.0	-0.4	0.0	0.0	0.09	0.09	0.00	
309.0	0.70	109.40	309.0	-0.7	0.6	0.6	0.69	0.53	-70.11	
404.0	1.70	90.70	404.0	-0.9	2.5	2.5	1.12	1.05	-19.68	
499.0	2.40	90.90	498.9	-1.0	5.9	5.9	0.74	0.74	0.21	
594.0	3.30	91.30	593.8	-1.1	10.7	10.7	0.95	0.95	0.42	
689.0	4.10	87.90	688.6	-1.0	16.8	16.8	0.87	0.84	-3.58	
784.0	5.10	88.60	783.3	-0.8	24.4	24.4	1.05	1.05	0.74	
878.0	6.20	89.70	876.8	-0.7	33.7	33.6	1.18	1.17	1.17	
973.0	6.90	100.20	971.2	-1.6	44.4	44.4	1.46	0.74	11.05	

Company:	Bayswater Exploration & Production, LLC	Local Co-ordinate Reference:	Well COT EAST O-30-29HN
Project:	SEC.30-T7N-R66W	TVD Reference:	WELL @ 4971.0ft (Original Well Elev)
Site:	COT 30J Pad Sec.30-T7N-R66W	MD Reference:	WELL @ 4971.0ft (Original Well Elev)
Well:	COT EAST O-30-29HN	North Reference:	True
Wellbore:	COT EAST O-30-29HN Wellbore #1	Survey Calculation Method:	Minimum Curvature
Design:	COT EAST O-30-29HN Wellbore #1	Database:	US_EDM

Survey									
Measured Depth (ft)	Inclination (°)	Azimuth (°)	Vertical Depth (ft)	+N/-S (ft)	+E/-W (ft)	Vertical Section (ft)	Dogleg Rate (°/100usft)	Build Rate (°/100usft)	Turn Rate (°/100usft)
1,068.0	6.90	99.90	1,065.5	-3.6	55.6	55.6	0.04	0.00	-0.32
1,163.0	7.70	98.30	1,159.8	-5.5	67.6	67.5	0.87	0.84	-1.68
1,257.0	7.80	98.10	1,252.9	-7.3	80.1	80.0	0.11	0.11	-0.21
1,352.0	8.80	97.60	1,346.9	-9.2	93.7	93.6	1.06	1.05	-0.53
1,447.0	9.40	96.90	1,440.7	-11.1	108.6	108.5	0.64	0.63	-0.74
1,481.0	9.60	95.00	1,474.2	-11.7	114.2	114.1	1.09	0.59	-5.59
1,570.0	9.76	94.96	1,562.0	-13.0	129.1	128.9	0.18	0.18	-0.04
1,664.0	10.20	91.97	1,654.5	-14.0	145.3	145.2	0.72	0.47	-3.18
1,759.0	11.52	92.85	1,747.8	-14.7	163.2	163.1	1.40	1.39	0.93
1,854.0	13.01	94.43	1,840.7	-16.0	183.4	183.2	1.61	1.57	1.66
1,949.0	14.33	95.84	1,933.0	-18.0	205.7	205.5	1.43	1.39	1.48
2,044.0	15.30	100.41	2,024.8	-21.5	229.7	229.5	1.60	1.02	4.81
2,138.0	14.60	99.53	2,115.6	-25.7	253.6	253.3	0.78	-0.74	-0.94
2,233.0	13.81	98.83	2,207.7	-29.4	276.6	276.3	0.85	-0.83	-0.74
2,328.0	15.30	96.37	2,299.7	-32.6	300.3	299.9	1.70	1.57	-2.59
2,423.0	14.51	95.31	2,391.5	-35.1	324.6	324.2	0.88	-0.83	-1.12
2,518.0	15.30	93.38	2,483.3	-36.9	349.0	348.6	0.98	0.83	-2.03
2,612.0	14.77	95.49	2,574.1	-38.8	373.3	372.9	0.81	-0.56	2.24
2,707.0	13.98	95.31	2,666.1	-41.0	396.8	396.3	0.83	-0.83	-0.19
2,801.0	11.52	104.63	2,757.8	-44.4	417.2	416.7	3.40	-2.62	9.91
2,896.0	8.71	116.23	2,851.3	-50.0	432.8	432.2	3.64	-2.96	12.21
2,991.0	6.33	126.78	2,945.5	-56.3	443.4	442.8	2.89	-2.51	11.11
3,085.0	2.99	148.05	3,039.2	-61.5	448.9	448.2	3.94	-3.55	22.63
3,180.0	5.01	156.66	3,133.9	-67.4	451.8	451.1	2.21	2.13	9.06
3,275.0	1.41	162.81	3,228.8	-72.3	453.8	453.1	3.80	-3.79	6.47
3,369.0	2.11	280.06	3,322.7	-73.1	452.5	451.7	3.22	0.74	124.73
3,464.0	2.55	314.86	3,417.7	-71.3	449.2	448.5	1.53	0.46	36.63
3,559.0	3.87	353.54	3,512.5	-66.7	447.4	446.7	2.59	1.39	40.72
3,653.0	1.76	24.30	3,606.4	-62.2	447.6	447.0	2.68	-2.24	32.72
3,748.0	0.44	330.33	3,701.4	-60.5	448.0	447.4	1.62	-1.39	-56.81
3,843.0	0.62	8.48	3,796.4	-59.7	447.9	447.3	0.41	0.19	40.16
3,938.0	0.70	9.53	3,891.4	-58.6	448.1	447.5	0.09	0.08	1.11
4,032.0	1.14	3.20	3,985.4	-57.1	448.3	447.6	0.48	0.47	-6.73
4,127.0	0.53	56.82	4,080.4	-56.0	448.7	448.1	0.98	-0.64	56.44
4,222.0	0.35	59.81	4,175.4	-55.6	449.3	448.7	0.19	-0.19	3.15
4,317.0	0.35	267.75	4,270.4	-55.4	449.3	448.7	0.72	0.00	-160.06
4,411.0	0.70	252.29	4,364.4	-55.6	448.4	447.8	0.40	0.37	-16.45
4,505.0	0.88	268.81	4,458.4	-55.8	447.2	446.6	0.31	0.19	17.57
4,600.0	0.18	220.47	4,553.3	-55.9	446.3	445.7	0.81	-0.74	-50.88
4,694.0	0.35	255.45	4,647.3	-56.1	446.0	445.4	0.24	0.18	37.21
4,789.0	1.06	46.62	4,742.3	-55.6	446.3	445.7	1.45	0.75	159.13
4,883.0	0.79	36.60	4,836.3	-54.5	447.3	446.7	0.33	-0.29	-10.66
4,978.0	0.79	35.02	4,931.3	-53.4	448.1	447.5	0.02	0.00	-1.66
5,096.0	0.62	27.46	5,049.3	-52.2	448.9	448.3	0.16	-0.14	-6.41

Company:	Bayswater Exploration & Production, LLC	Local Co-ordinate Reference:	Well COT EAST O-30-29HN
Project:	SEC.30-T7N-R66W	TVD Reference:	WELL @ 4971.0ft (Original Well Elev)
Site:	COT 30J Pad Sec.30-T7N-R66W	MD Reference:	WELL @ 4971.0ft (Original Well Elev)
Well:	COT EAST O-30-29HN	North Reference:	True
Wellbore:	COT EAST O-30-29HN Wellbore #1	Survey Calculation Method:	Minimum Curvature
Design:	COT EAST O-30-29HN Wellbore #1	Database:	US_EDM

Survey									
Measured Depth (ft)	Inclination (°)	Azimuth (°)	Vertical Depth (ft)	+N/-S (ft)	+E/-W (ft)	Vertical Section (ft)	Dogleg Rate (°/100usft)	Build Rate (°/100usft)	Turn Rate (°/100usft)
5,190.0	0.53	21.66	5,143.3	-51.3	449.3	448.7	0.11	-0.10	-6.17
5,284.0	0.88	68.77	5,237.3	-50.7	450.1	449.5	0.69	0.37	50.12
5,379.0	0.62	68.95	5,332.3	-50.2	451.3	450.7	0.27	-0.27	0.19
5,473.0	0.26	115.70	5,426.3	-50.1	451.9	451.4	0.51	-0.38	49.73
5,568.0	0.35	106.21	5,521.3	-50.3	452.4	451.8	0.11	0.09	-9.99
5,662.0	0.18	176.52	5,615.3	-50.5	452.7	452.1	0.36	-0.18	74.80
5,757.0	0.70	250.00	5,710.3	-50.9	452.1	451.6	0.71	0.55	77.35
5,852.0	0.70	356.52	5,805.3	-50.5	451.6	451.0	1.18	0.00	112.13
5,946.0	0.62	244.02	5,899.3	-50.1	451.1	450.5	1.17	-0.09	-119.68
6,040.0	0.62	232.25	5,993.3	-50.7	450.2	449.7	0.14	0.00	-12.52
6,135.0	0.70	228.38	6,088.3	-51.4	449.4	448.8	0.10	0.08	-4.07
6,230.0	0.79	215.72	6,183.3	-52.3	448.6	448.0	0.20	0.09	-13.33
6,324.0	0.88	209.75	6,277.2	-53.4	447.8	447.2	0.13	0.10	-6.35
6,418.0	0.62	194.45	6,371.2	-54.6	447.3	446.7	0.35	-0.28	-16.28
6,513.0	0.79	346.68	6,466.2	-54.4	447.1	446.5	1.44	0.18	160.24
6,607.0	0.62	352.13	6,560.2	-53.3	446.8	446.3	0.19	-0.18	5.80
6,702.0	1.06	8.30	6,655.2	-51.9	446.9	446.3	0.52	0.46	17.02
6,796.0	4.48	51.02	6,749.1	-48.7	449.9	449.3	4.01	3.64	45.45
6,891.0	11.26	84.59	6,843.2	-45.5	462.0	461.5	8.34	7.14	35.34
6,985.0	17.67	80.72	6,934.2	-42.4	485.2	484.8	6.89	6.82	-4.12
7,080.0	25.24	73.69	7,022.5	-34.3	519.0	518.6	8.40	7.97	-7.40
7,127.0	32.18	69.83	7,063.7	-27.2	540.4	540.1	15.28	14.77	-8.21
7,175.0	33.33	80.02	7,104.1	-20.5	565.4	565.1	11.72	2.40	21.23
7,222.0	35.26	90.04	7,143.0	-18.3	591.7	591.5	12.68	4.11	21.32
7,269.0	40.63	95.49	7,180.1	-19.7	620.5	620.3	13.46	11.43	11.60
7,316.0	47.92	96.54	7,213.7	-23.2	653.1	652.8	15.59	15.51	2.23
7,364.0	54.69	96.19	7,243.7	-27.3	690.3	690.0	14.12	14.10	-0.73
7,458.0	66.04	91.45	7,290.1	-32.6	771.7	771.3	12.84	12.07	-5.04
7,552.0	74.66	92.33	7,321.7	-35.5	860.1	859.7	9.21	9.17	0.94
7,646.0	81.78	90.74	7,340.9	-38.0	952.0	951.6	7.75	7.57	-1.69
7,720.8	87.39	89.49	7,347.9	-38.1	1,026.4	1,026.0	7.68	7.49	-1.67
Cross DSU Setback - 2173'FSL & 2396'FEL, Sec.30									
7,741.0	88.90	89.16	7,348.6	-37.9	1,046.6	1,046.2	7.68	7.50	-1.65
7,836.0	89.60	89.86	7,349.8	-37.1	1,141.6	1,141.2	1.04	0.74	0.74
7,968.0	90.66	89.86	7,349.5	-36.7	1,273.6	1,273.2	0.80	0.80	0.00
8,063.0	91.54	90.04	7,347.7	-36.7	1,368.6	1,368.1	0.95	0.93	0.19
8,158.0	90.22	90.39	7,346.2	-37.0	1,463.6	1,463.1	1.44	-1.39	0.37
8,252.0	90.92	90.22	7,345.3	-37.5	1,557.6	1,557.1	0.77	0.74	-0.18
8,346.0	88.29	87.93	7,345.9	-36.0	1,651.5	1,651.1	3.71	-2.80	-2.44
8,440.0	90.22	88.81	7,347.2	-33.3	1,745.5	1,745.1	2.26	2.05	0.94
8,534.0	90.44	88.46	7,346.6	-31.1	1,839.5	1,839.0	0.44	0.23	-0.37
8,628.0	90.31	86.70	7,346.0	-27.1	1,933.4	1,933.0	1.88	-0.14	-1.87
8,723.0	89.34	87.05	7,346.3	-21.9	2,028.2	2,027.9	1.09	-1.02	0.37

Company:	Bayswater Exploration & Production, LLC	Local Co-ordinate Reference:	Well COT EAST O-30-29HN
Project:	SEC.30-T7N-R66W	TVD Reference:	WELL @ 4971.0ft (Original Well Elev)
Site:	COT 30J Pad Sec.30-T7N-R66W	MD Reference:	WELL @ 4971.0ft (Original Well Elev)
Well:	COT EAST O-30-29HN	North Reference:	True
Wellbore:	COT EAST O-30-29HN Wellbore #1	Survey Calculation Method:	Minimum Curvature
Design:	COT EAST O-30-29HN Wellbore #1	Database:	US_EDM

Survey									
Measured Depth (ft)	Inclination (°)	Azimuth (°)	Vertical Depth (ft)	+N/-S (ft)	+E/-W (ft)	Vertical Section (ft)	Dogleg Rate (°/100usft)	Build Rate (°/100usft)	Turn Rate (°/100usft)
8,818.0	91.36	90.04	7,345.7	-19.5	2,123.2	2,122.9	3.80	2.13	3.15
8,912.0	88.81	90.04	7,345.6	-19.6	2,217.2	2,216.9	2.71	-2.71	0.00
9,007.0	88.72	90.39	7,347.6	-19.9	2,312.2	2,311.8	0.38	-0.09	0.37
9,101.0	88.55	89.86	7,349.9	-20.1	2,406.1	2,405.8	0.59	-0.18	-0.56
9,196.0	88.99	88.99	7,351.9	-19.2	2,501.1	2,500.8	1.03	0.46	-0.92
9,291.0	88.64	87.40	7,353.9	-16.2	2,596.0	2,595.7	1.71	-0.37	-1.67
9,385.0	90.31	88.99	7,354.7	-13.2	2,690.0	2,689.7	2.45	1.78	1.69
9,479.0	90.40	89.86	7,354.2	-12.3	2,784.0	2,783.7	0.93	0.10	0.93
9,574.0	89.69	90.04	7,354.1	-12.2	2,879.0	2,878.7	0.77	-0.75	0.19
9,668.0	87.58	90.04	7,356.3	-12.3	2,972.9	2,972.6	2.24	-2.24	0.00
9,763.0	87.32	88.99	7,360.5	-11.5	3,067.8	3,067.5	1.14	-0.27	-1.11
9,858.0	88.46	87.93	7,364.0	-8.9	3,162.7	3,162.5	1.64	1.20	-1.12
9,953.0	90.40	88.81	7,365.0	-6.2	3,257.7	3,257.4	2.24	2.04	0.93
10,047.0	90.48	88.46	7,364.3	-4.0	3,351.7	3,351.4	0.38	0.09	-0.37
10,142.0	91.01	88.81	7,363.0	-1.7	3,446.6	3,446.4	0.67	0.56	0.37
10,236.0	92.24	88.99	7,360.4	0.1	3,540.6	3,540.4	1.32	1.31	0.19
10,331.0	89.43	89.16	7,359.0	1.6	3,635.5	3,635.3	2.96	-2.96	0.18
10,425.0	89.87	89.34	7,359.6	2.8	3,729.5	3,729.3	0.51	0.47	0.19
10,520.0	89.43	89.51	7,360.1	3.8	3,824.5	3,824.3	0.50	-0.46	0.18
10,614.0	90.75	90.39	7,360.0	3.9	3,918.5	3,918.3	1.69	1.40	0.94
10,709.0	88.99	90.04	7,360.2	3.5	4,013.5	4,013.3	1.89	-1.85	-0.37
10,803.0	89.78	90.57	7,361.2	3.0	4,107.5	4,107.3	1.01	0.84	0.56
10,898.0	89.69	89.34	7,361.6	3.1	4,202.5	4,202.3	1.30	-0.09	-1.29
10,992.0	90.31	87.05	7,361.6	6.1	4,296.4	4,296.3	2.52	0.66	-2.44
11,087.0	89.78	86.52	7,361.6	11.4	4,391.3	4,391.2	0.79	-0.56	-0.56
11,182.0	89.60	86.88	7,362.1	16.9	4,486.1	4,486.1	0.42	-0.19	0.38
11,277.0	89.87	86.52	7,362.5	22.3	4,581.0	4,581.0	0.47	0.28	-0.38
11,371.0	88.37	87.58	7,364.0	27.2	4,674.8	4,674.9	1.95	-1.60	1.13
11,466.0	87.32	88.99	7,367.5	30.0	4,769.7	4,769.8	1.85	-1.11	1.48
11,561.0	89.08	89.86	7,370.5	31.0	4,864.7	4,864.7	2.07	1.85	0.92
11,656.0	91.01	90.39	7,370.5	30.7	4,959.7	4,959.7	2.11	2.03	0.56
11,750.0	91.19	89.86	7,368.6	30.5	5,053.6	5,053.7	0.60	0.19	-0.56
11,845.0	90.57	89.16	7,367.2	31.4	5,148.6	5,148.7	0.98	-0.65	-0.74
11,940.0	91.10	89.51	7,365.8	32.5	5,243.6	5,243.7	0.67	0.56	0.37
12,034.0	91.45	89.51	7,363.7	33.3	5,337.6	5,337.6	0.37	0.37	0.00
12,128.0	90.04	88.11	7,362.5	35.2	5,431.5	5,431.6	2.11	-1.50	-1.49
12,223.0	90.40	87.58	7,362.1	38.8	5,526.5	5,526.6	0.67	0.38	-0.56
12,318.0	89.08	89.34	7,362.6	41.3	5,621.4	5,621.6	2.32	-1.39	1.85
12,413.0	89.78	88.99	7,363.5	42.7	5,716.4	5,716.6	0.82	0.74	-0.37
12,507.0	89.52	88.11	7,364.1	45.1	5,810.4	5,810.5	0.98	-0.28	-0.94
12,602.0	90.48	89.86	7,364.1	46.8	5,905.4	5,905.5	2.10	1.01	1.84
12,696.0	89.78	88.28	7,363.9	48.3	5,999.4	5,999.5	1.84	-0.74	-1.68
12,790.0	90.84	90.57	7,363.4	49.3	6,093.3	6,093.5	2.68	1.13	2.44
12,885.0	91.98	90.22	7,361.0	48.6	6,188.3	6,188.5	1.26	1.20	-0.37

Company:	Bayswater Exploration & Production, LLC	Local Co-ordinate Reference:	Well COT EAST O-30-29HN
Project:	SEC.30-T7N-R66W	TVD Reference:	WELL @ 4971.0ft (Original Well Elev)
Site:	COT 30J Pad Sec.30-T7N-R66W	MD Reference:	WELL @ 4971.0ft (Original Well Elev)
Well:	COT EAST O-30-29HN	North Reference:	True
Wellbore:	COT EAST O-30-29HN Wellbore #1	Survey Calculation Method:	Minimum Curvature
Design:	COT EAST O-30-29HN Wellbore #1	Database:	US_EDM

Survey									
Measured Depth (ft)	Inclination (°)	Azimuth (°)	Vertical Depth (ft)	+N/-S (ft)	+E/-W (ft)	Vertical Section (ft)	Dogleg Rate (°/100usft)	Build Rate (°/100usft)	Turn Rate (°/100usft)
12,980.0	90.40	89.86	7,359.0	48.5	6,283.3	6,283.4	1.71	-1.66	-0.38
13,075.0	91.28	89.69	7,357.7	48.9	6,378.3	6,378.4	0.94	0.93	-0.18
13,170.0	88.37	90.22	7,357.9	49.0	6,473.3	6,473.4	3.11	-3.06	0.56
13,264.0	88.81	89.34	7,360.3	49.3	6,567.2	6,567.4	1.05	0.47	-0.94
13,359.0	88.46	88.99	7,362.5	50.7	6,662.2	6,662.4	0.52	-0.37	-0.37
13,454.0	87.67	88.11	7,365.7	53.1	6,757.1	6,757.3	1.24	-0.83	-0.93
13,548.0	89.78	87.58	7,367.8	56.7	6,851.0	6,851.2	2.31	2.24	-0.56
13,643.0	89.87	89.51	7,368.1	59.1	6,946.0	6,946.2	2.03	0.09	2.03
13,738.0	89.78	88.63	7,368.4	60.6	7,041.0	7,041.2	0.93	-0.09	-0.93
13,832.0	90.75	87.75	7,368.0	63.6	7,134.9	7,135.2	1.39	1.03	-0.94
13,926.0	89.16	89.86	7,368.0	65.5	7,228.9	7,229.2	2.81	-1.69	2.24
14,021.0	91.36	90.22	7,367.6	65.5	7,323.9	7,324.2	2.35	2.32	0.38
14,116.0	91.80	89.69	7,365.0	65.6	7,418.8	7,419.1	0.72	0.46	-0.56
14,210.0	92.24	89.16	7,361.7	66.5	7,512.8	7,513.1	0.73	0.47	-0.56
14,304.0	91.71	89.51	7,358.4	67.6	7,606.7	7,607.0	0.68	-0.56	0.37
14,399.0	88.20	88.63	7,358.5	69.1	7,701.7	7,702.0	3.81	-3.69	-0.93
14,494.0	88.02	88.28	7,361.6	71.7	7,796.6	7,796.9	0.41	-0.19	-0.37
14,588.0	89.08	87.75	7,364.0	74.9	7,890.5	7,890.9	1.26	1.13	-0.56
14,683.0	91.45	89.34	7,363.6	77.4	7,985.5	7,985.8	3.00	2.49	1.67
14,777.0	91.10	89.16	7,361.5	78.6	8,079.4	8,079.8	0.42	-0.37	-0.19
14,872.0	89.52	87.93	7,361.0	81.0	8,174.4	8,174.8	2.11	-1.66	-1.29
14,967.0	91.71	89.86	7,360.0	82.8	8,269.4	8,269.8	3.07	2.31	2.03
15,061.0	89.69	88.46	7,358.8	84.2	8,363.3	8,363.8	2.61	-2.15	-1.49
15,155.0	90.04	88.99	7,359.0	86.3	8,457.3	8,457.8	0.68	0.37	0.56
15,249.0	89.08	88.99	7,359.8	88.0	8,551.3	8,551.7	1.02	-1.02	0.00
15,325.0	88.29	89.34	7,361.5	89.1	8,627.3	8,627.7	1.14	-1.04	0.46
15,385.0	88.29	89.34	7,363.3	89.8	8,687.2	8,687.7	0.00	0.00	0.00

Design Targets									
Target Name	Dip Angle (°)	Dip Dir. (°)	TVD (ft)	+N/-S (ft)	+E/-W (ft)	Northing (usft)	Easting (usft)	Latitude	Longitude
- hit/miss target									
- Shape									
SHL 2226'FSL & 2004'F ¹	0.00	0.00	1.0	0.0	0.0	1,441,793.45	3,187,647.10	40.544162	-104.824805
- survey hits target center									
- Point									
Projected BHL 2175'FSL	0.00	0.00	7,361.0	90.4	8,688.0	1,441,950.02	3,196,333.84	40.544406	-104.793545
- survey misses target center by 2.5ft at 15385.0ft MD (7363.3 TVD, 89.8 N, 8687.2 E)									
- Point									

Company:	Bayswater Exploration & Production, LLC	Local Co-ordinate Reference:	Well COT EAST O-30-29HN
Project:	SEC.30-T7N-R66W	TVD Reference:	WELL @ 4971.0ft (Original Well Elev)
Site:	COT 30J Pad Sec.30-T7N-R66W	MD Reference:	WELL @ 4971.0ft (Original Well Elev)
Well:	COT EAST O-30-29HN	North Reference:	True
Wellbore:	COT EAST O-30-29HN Wellbore #1	Survey Calculation Method:	Minimum Curvature
Design:	COT EAST O-30-29HN Wellbore #1	Database:	US_EDM

Survey Annotations				
Measured Depth (ft)	Vertical Depth (ft)	Local Coordinates		Comment
		+N/-S (ft)	+E/-W (ft)	
7,720.8	7,347.9	-38.1	1,026.4	Cross DSU Setback - 2173'FSL & 2396'FEL, Sec.30

Checked By: _____	Approved By: _____	Date: _____
-------------------	--------------------	-------------