

## Inspection Photos

Location Name: LARAMIE ENERGY LLC Buzzard Creek /14B Pad

Location ID: 334555



Photo #0941 from entrance to location



Photo #0942 Both 500 gallon methanol tanks missing operator name and contact number.



## Inspection Photos

Location Name: LARAMIE ENERGY LLC Buzzard Creek /14B Pad

Location ID: 334555



**Photo #0943 Multiple deadman not marked.**



**Photo #0949 Multiple deadman not marked.**



## Inspection Photos

Location Name: LARAMIE ENERGY LLC Buzzard Creek /14B Pad

Location ID: 334555



Photo #0945 Multiple holes in tank containment Liner.

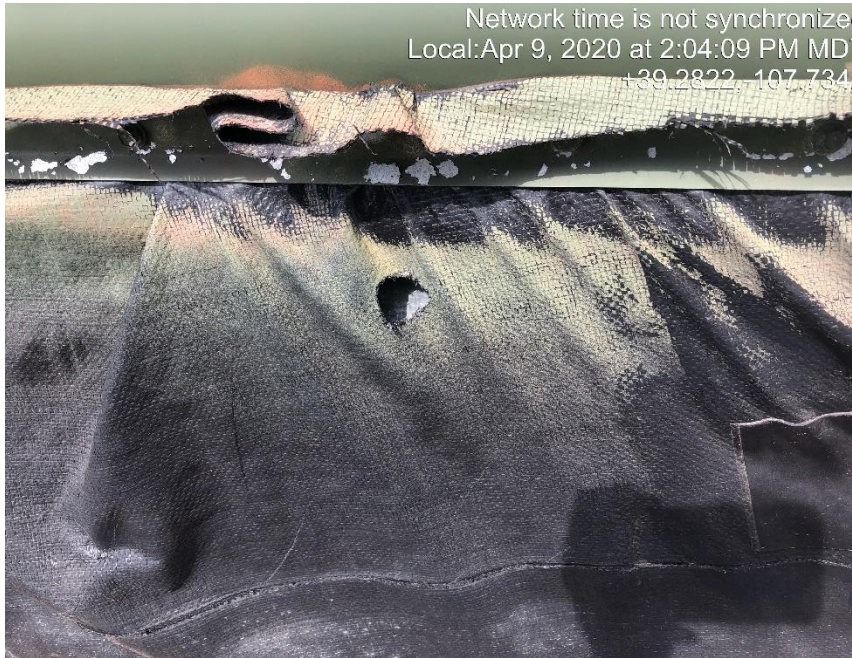


Photo #0946 Multiple holes in tank containment Liner.

## Inspection Photos

Location Name: LARAMIE ENERGY LLC Buzzard Creek /14B Pad

Location ID: 334555



**Photo #0947 Multiple holes in tank containment Liner.**



**COLORADO**  
Oil & Gas Conservation  
Commission  
Department of Natural Resources