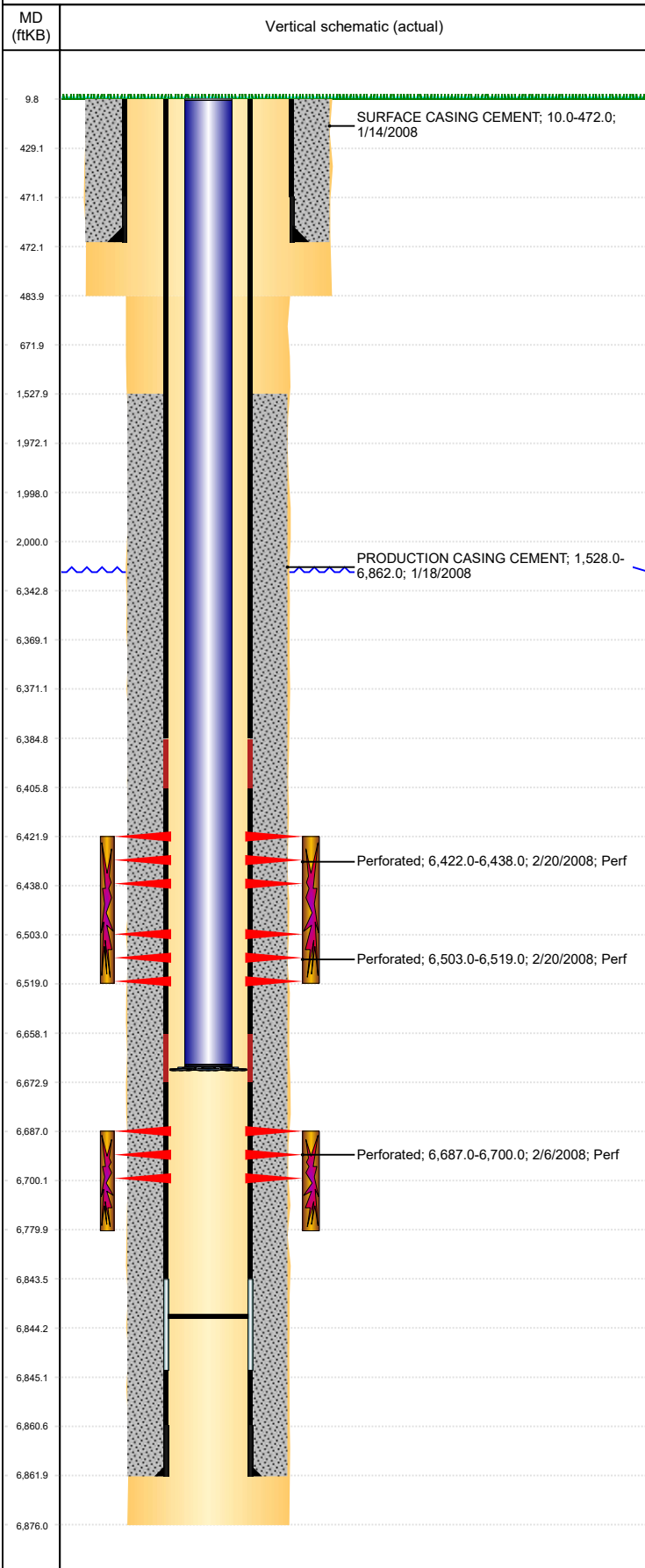


Well Name: HAPPY AMIGO C01-25

VERTICAL, ORIGINAL HOLE, 2/19/2020 8:15:44 AM



Well Header									
API 05-123-25302			Business Unit DJ BASIN			District 15		Well Config VERTICAL	
KB - GL / MSL (ft... 10.00		Spud Date 1/14/2008		P & A Date		Well Production Status PR			SoRT No
Comment									
Surface Location (Congressional)									
Qtr 3 SE	Qtr 4 SW	Section 1	Twnshp 4	Twnsh... N	Range 64	Rng E... W	Actual Latitude (°) 40.33735369	Actual Longitude (°) -104.50346610	
Wellbore Sections									
Section Des			Size (in)			Act Top, MD (ftKB)		Act Btm, MD (ftKB)	
SURFACE			12 1/4			10		484	
PRODUCTION			7 7/8			484		6,876	
Casing Strings									
Csg Des			Run Date		OD (in)	Wt/Len (lb/ft)	Grade	Top, MD (ftKB)	MD (ftKB)
Surface			1/15/2008		8 5/8	24.00	J-55	10.0	472.0
Production			1/18/2008		4 1/2	11.60	M-80	10.0	6,862.0
Cement									
Des					Start Date		Top (ftKB)		Btm (ftKB)
SURFACE CASING CEMENT					1/14/2008		10.0		472.0
PRODUCTION CASING CEMENT					1/18/2008		1,528.0		6,862.0
PRODUCTION CASING CEMENT					1/18/2008				
Zone Statuses									
Zone Name		Status Date	Status	Fluid Type	Job			Prod Method	
CODELL		3/12/2008	PR	Gas	DRILLING/COMPLETION - ORIGINAL, 1/14/2008...				
NIOBRARA		3/12/2008	PR	Gas	DRILLING/COMPLETION - ORIGINAL, 1/14/2008...				
Perforation Data									
Linked Zone			Bnch/Stg	Entered Shot Total	Top (ftKB)		Btm (ftKB)		Date
NIOBRARA, ORIGINAL HOLE			A	64	6,422.00		6,438.00		2/20/2008
NIOBRARA, ORIGINAL HOLE			B	64	6,503.00		6,519.00		2/20/2008
CODELL, ORIGINAL HOLE				52	6,687.00		6,700.00		2/6/2008
Stimulation Intervals									
Zone					Start Date		Top (ftKB)		Btm (ftKB)
NIOBRARA, ORIGINAL HOLE					2/20/2008		6,422.0		6,519.0
CODELL, ORIGINAL HOLE					2/20/2008		6,687.0		6,780.0
Other In Hole									
Run Date			Des			OD (in)	Top (ftKB)		Btm (ftKB)
4/18/2018			Plunger Lift			1 7/8			
Logs									
Date		Type				Top, MD (ftKB)		Btm, MD (ftKB)	
1/18/2008		Caliper/Comp.Density/Neutron/GR/SP/ML				2,450.0		6,857.0	
1/18/2008		DIL/GR/SP/Caliper				473.0		6,877.0	
2/6/2008		CBL/CCL/GR				1,380.0		6,835.0	
8/26/2016		GYRO				0.0		6,600.0	
Plug Back Total Depths									
Date		Type		Com				Depth (ftKB)	
1/18/2008		LATCH DOWN COLLAR						6,844.0	