

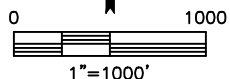
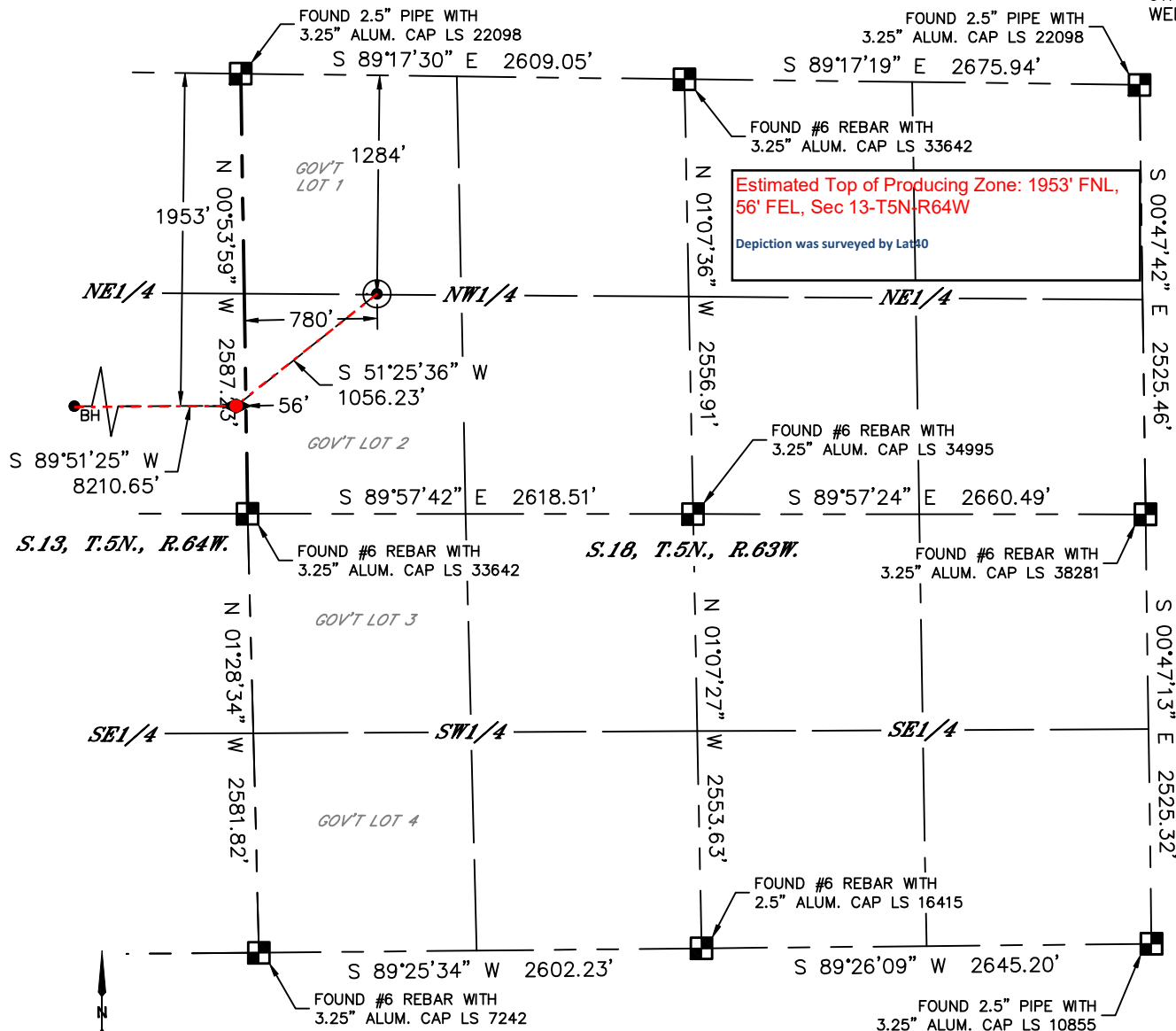


Lat40°, Inc. 6250 W. 10th Street, Unit 2, Greeley, CO 970-515-5294

WELL LOCATION CERTIFICATE

SLW RANCH STATE B14-658

SECTION: 18
TOWNSHIP: 5N
RANGE: 63W
6TH. P.M.
WELD COUNTY, CO



APPROVED

By Ben Maxey at 8:54 am, Dec 19, 2019

| | | | | | | | |
|------------------------------------|----------|------------|----------|-------------------------|-------------|------------------------|--|
| CLIENT: NOBLE ENERGY, INC. | | | | LANDMAN: CORY NEIGHBORS | | | |
| INSTRUMENT OPERATOR: SCOTT SHERARD | | | | SURVEY DATE: 3/27/2017 | | SURFACE USE: RANGELAND | |
| SHL FOOTAGE | SHL LAT° | SHL LONG° | SHL PDOP | SHL ELEV (FT.) | SHL 1/4/1/4 | SHL S-T-R | |
| 1284 FNL 780 FWL | 40.40258 | -104.48632 | 2.1 | 4589 | NWNW | 18-5-63 | |

| | | | | | | |
|-------------------|----------|------------|-----------|----------|------------|-----------|
| BHL FOOTAGE | BHL LAT° | BHL LONG° | BHL S-T-R | TPZ LAT° | TPZ LONG° | TPZ S-T-R |
| 2005 FNL 2237 FWL | 40.40099 | -104.51878 | 14-5-64 | 40.40080 | -104.48931 | 13-5-64 |

NOTE:

- 1) Bearings shown are Grid Bearings of the Colorado State Plane Coordinate System, North Zone, North American Datum 1983. The lineal dimensions as contained herein are based upon the "U.S. Survey Foot."
- 2) Distances to section lines measured at 90 degrees from said section lines.
- 3) Ground elevations are based on an observed GPS elevation (NAVD 1988 DATUM).
- 4) Latitude and Longitude shown are (NAD 83 DATUM).
- 5) IMPROVEMENTS: See LOCATION DRAWING for all visible improvements within 500' of oil and gas location.
- 6) This map does not represent a boundary survey.

LEGEND

- = ALIQUOT MONUMENT AS DESCRIBED
- = CALCULATED POSITION
- = SURFACE HOLE LOCATION (SHL)
- ◆ = TOP OF PRODUCTION ZONE (TPZ)
- = BOTTOM HOLE LOCATION (BHL)
- ⊙ = EXISTING WELL
- ⊙ = ABANDONED WELL



SHEET 1 OF 3

Kyle E. Rutz—On behalf of Lat40°, Inc.
Colorado Licensed Professional Land Surveyor No. 38307
DATE: 12/9/2019
PROJECT#: 2017024

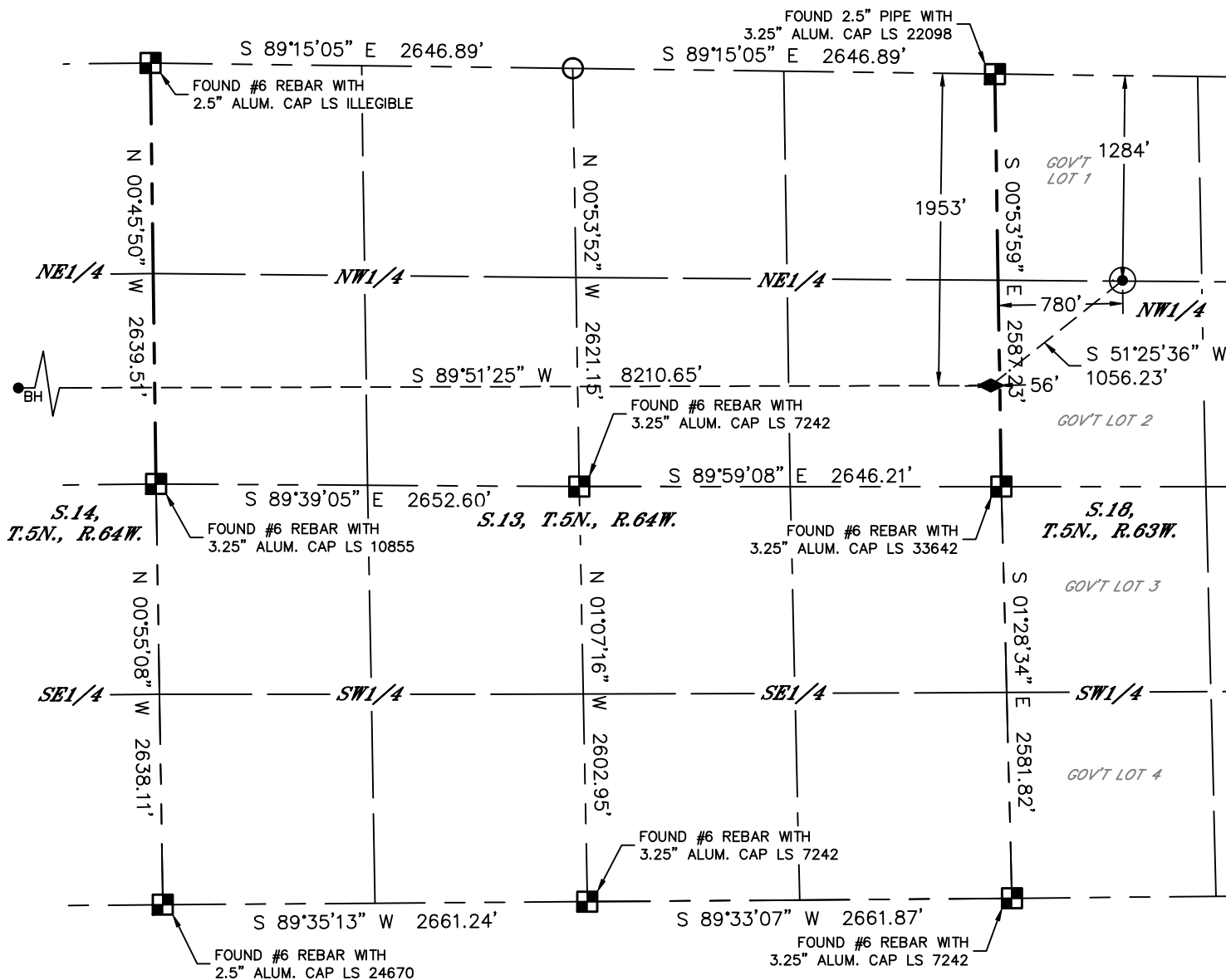


Lat40°, Inc. 6250 W. 10th Street, Unit 2, Greeley, CO 970-515-5294

WELL LOCATION CERTIFICATE

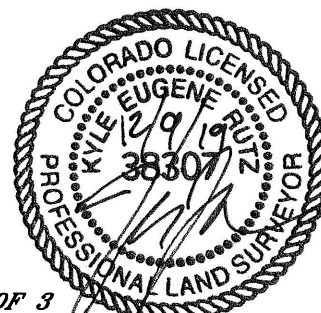
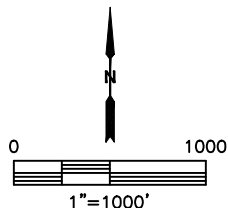
SLW RANCH STATE B14-658

SECTION: 18
TOWNSHIP: 5N
RANGE: 63W
6TH. P.M.
WELD COUNTY, CO



LEGEND

- = ALIQUOT MONUMENT AS DESCRIBED
- = CALCULATED POSITION
- ⊙ = SURFACE HOLE LOCATION (SHL)
- ◆ = TOP OF PRODUCTION ZONE (TPZ)
- _{BH} = BOTTOM HOLE LOCATION (BHL)
- ⊕ = EXISTING WELL
- ⊖ = ABANDONED WELL



SHEET 2 OF 3

Kyle E. Rutz—On behalf of Lat40°, Inc.
Colorado Licensed Professional Land Surveyor No. 38307
DATE: 12/9/2019
PROJECT#: 2017024

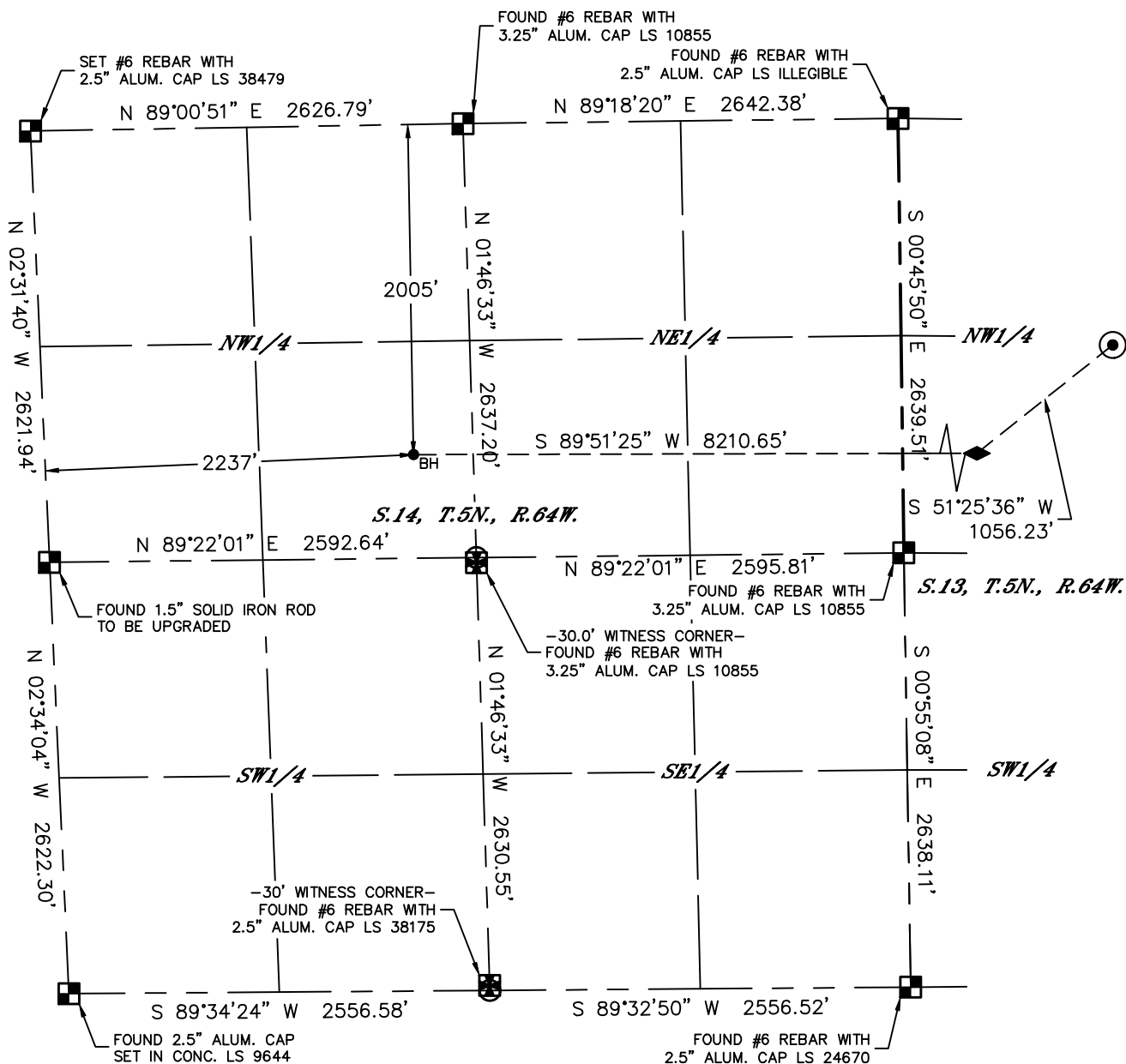


Lat40°, Inc. 6250 W. 10th Street, Unit 2, Greeley, CO 970-515-5294

WELL LOCATION CERTIFICATE

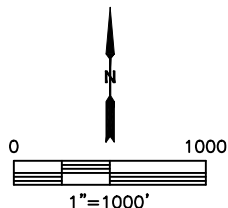
SLW RANCH STATE B14-658

SECTION: 18
TOWNSHIP: 5N
RANGE: 63W
6TH. P.M.
WELD COUNTY, CO



LEGEND

- = ALIQUOT MONUMENT AS DESCRIBED
- = CALCULATED POSITION
- ⊙ = SURFACE HOLE LOCATION (SHL)
- ◆ = TOP OF PRODUCTION ZONE (TPZ)
- _{BH} = BOTTOM HOLE LOCATION (BHL)
- ⊕ = EXISTING WELL
- ⊖ = ABANDONED WELL



SHEET 3 OF 3

Kyle E. Rutz—On behalf of Lat40°, Inc.
Colorado Licensed Professional DATE: 12/9/2019
Land Surveyor No. 38307 PROJECT#: 2017024