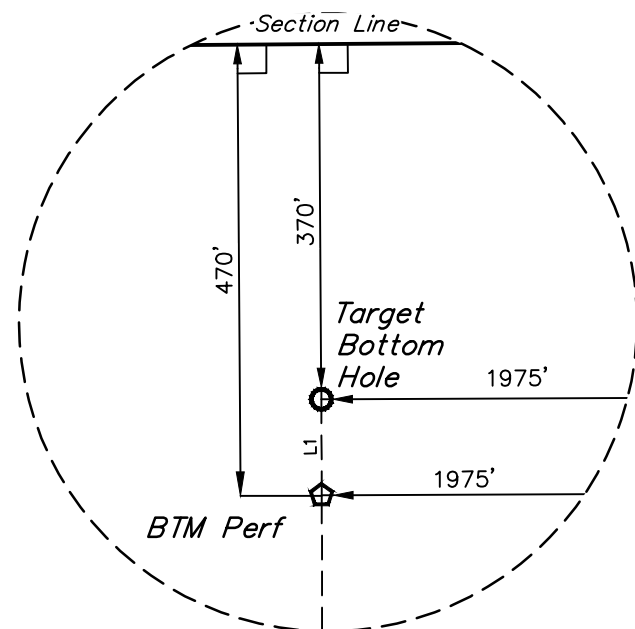


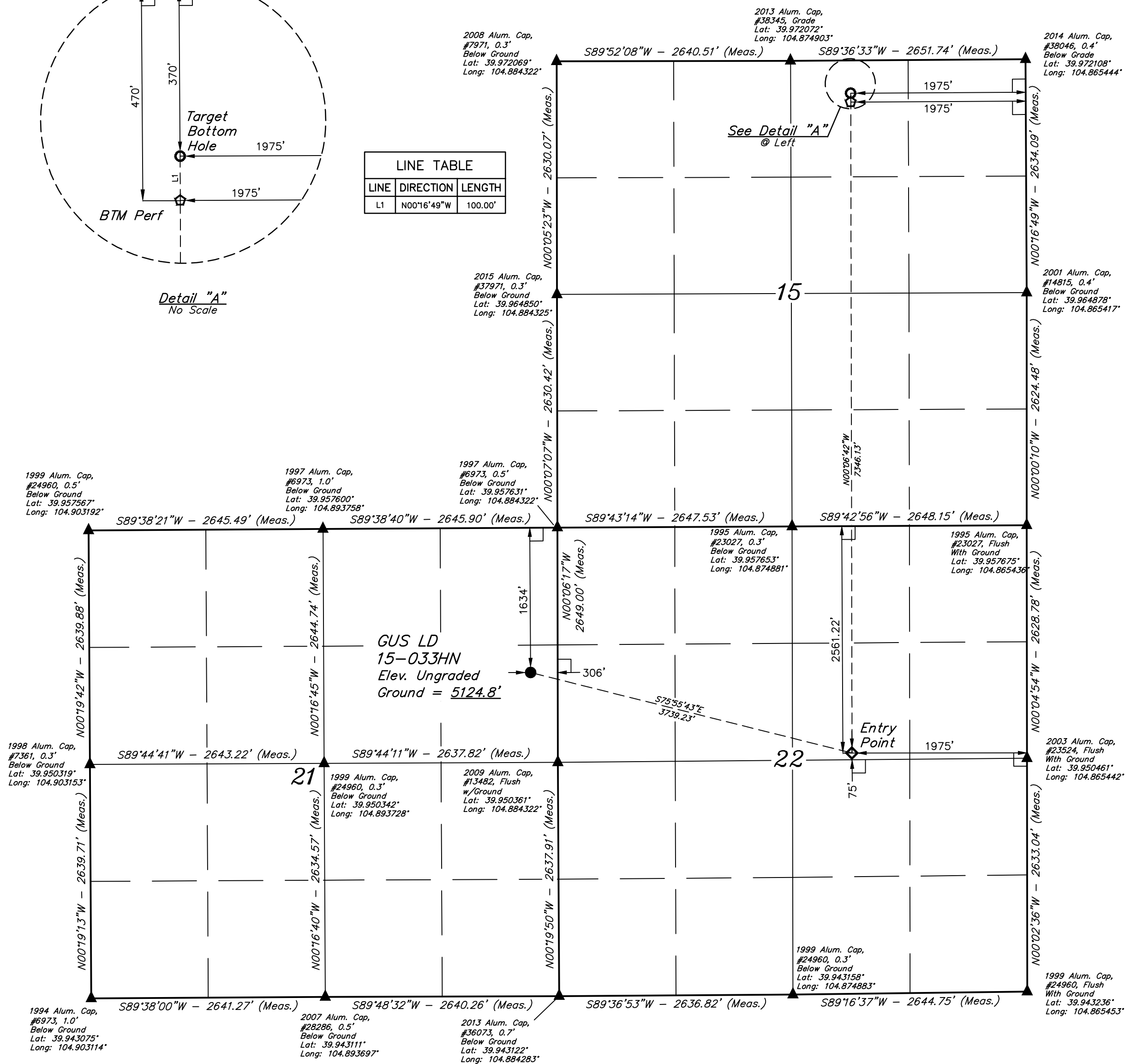
LEGEND:

- L = 90° SYMBOL
 ● = PROPOSED WELLHEAD.
 ◆ = ENTRY POINT.
 ☆ = BTM PERF.
 ○ = TARGET BOTTOM HOLE.
 ▲ = SECTION CORNERS
 LOCATED. (NAD 83)
 △ = SECTION CORNERS
 RE-ESTABLISHED.
 (Not Set on Ground.)
 (NAD 83)



Detail "A"
No Scale

LINE TABLE		
LINE	DIRECTION	LENGTH
L1	N00°16'49"W	100.00'



PDOP = 1.2



NAD 83 (SURFACE LOCATION)	NAD 83 (ENTRY POINT)	NAD 83 (BTM PERF)	NAD 83 (TARGET BOTTOM HOLE)
LATITUDE = 39°57'11.37" (39.953144)	LATITUDE = 39°57'02.72" (39.950630)	LATITUDE = 39°58'14.85" (39.970791)	LATITUDE = 39°58'15.84" (39.971066)
LONGITUDE = 104°53'20.48" (104.885411)	LONGITUDE = 104°52'20.94" (104.872484)	LONGITUDE = 104°52'20.94" (104.872484)	LONGITUDE = 104°52'20.95" (104.872485)
NAD 27 (SURFACE LOCATION)	NAD 27 (ENTRY POINT)	NAD 27 (BTM PERF)	NAD 27 (TARGET BOTTOM HOLE)
LATITUDE = 39°57'11.37" (39.953159)	LATITUDE = 39°57'02.32" (39.950646)	LATITUDE = 39°58'14.91" (39.970807)	LATITUDE = 39°58'15.89" (39.971082)
LONGITUDE = 104°53'20.57" (104.884880)	LONGITUDE = 104°52'19.03" (104.871953)	LONGITUDE = 104°52'19.03" (104.871954)	LONGITUDE = 104°52'19.04" (104.871955)

BASIS OF BEARINGS

BASIS OF BEARINGS IS A G.P.S. OBSERVATION

OBSERVATION

BENCHMARK JR 53 5026 LOCATED IN THE SW 1/4 SE 1/4 OF SECTION 18, T1N, R68W, 6th P.M., TAKEN FROM 1988 PUBLISHED DATUM BY THE UNITED STATES DEPARTMENT OF THE INTERIOR, GEOLOGICAL SURVEY AS BEING 5028 FEET.

UELS, LLC

**Corporate Office * 85 South 200 East
Vernal, UT 84078 * (435) 789-1017**



REV: 1 07-27-18 B.L.B.. (RELOCATE WELL HEADS, EP & TBH, ADDED BTM PERF)

GREAT WESTERN OPERATING COMPANY


GUS LD 15-033HN
SE 1/4 NE 1/4, SECTION 21, T1S, R67W, 6th P.M.
ADAMS COUNTY, COLORADO

SURVEYED BY	GREG WEIMER, D.D.	01-23-17	SCALE
DRAWN BY	K.B.	06-12-18	1" = 1000'

WELL LOCATION PLAT

CERTIFICATE

THIS IS TO CERTIFY THAT THE ABOVE DRAWING PREPARED FROM FIELD NOTES OF ACTUAL SURVEYS MADE BY ME OR UNDER MY SUPERVISION AND THAT THE SAME ARE TRUE AND CORRECT TO THE BEST OF MY KNOWLEDGE AND BELIEF.



REGISTERED LAND SURVEYOR
REGISTRATION NO. 28285
STATE OF COLORADO
7-27-18