

## Inspection Photos

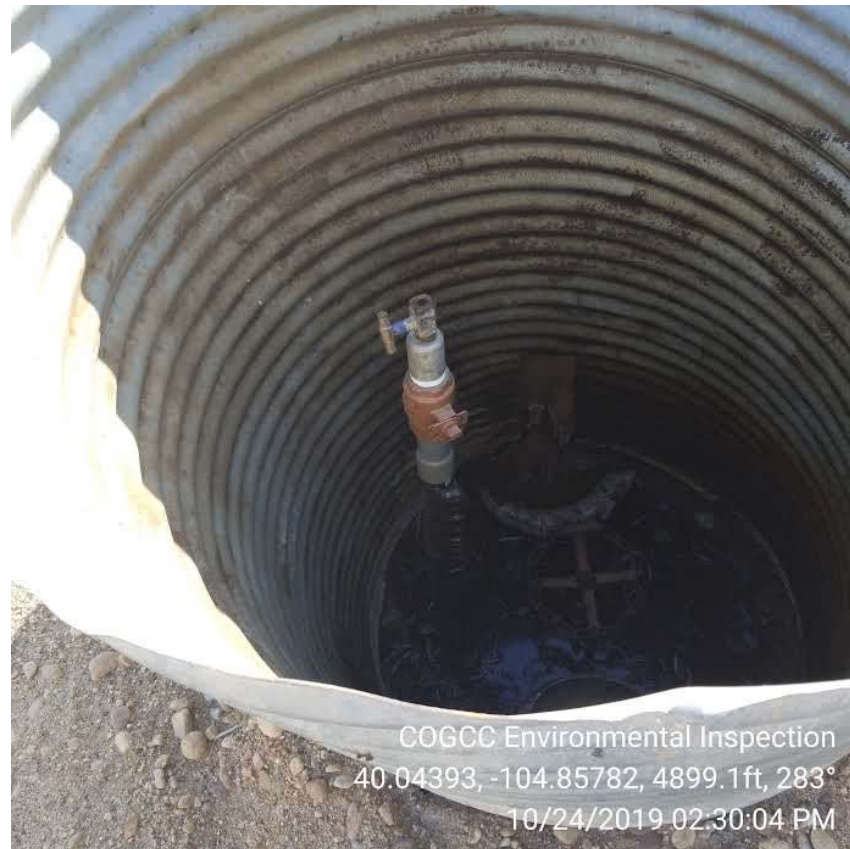
Location Name: Facility #8 Consolidated Gas Line

Location ID: 452596



COGCC Environmental Inspection  
40.04387, -104.85785, 4900.3ft, 310°  
10/24/2019 02:30:15 PM

**Photo 1 – Foreground: Unmarked valve culvert**  
**Background: Anadarko Norden Receiver**



COGCC Environmental Inspection  
40.04393, -104.85782, 4899.1ft, 283°  
10/24/2019 02:30:04 PM

**Photo 2 – Inside culvert**



## Inspection Photos

Location Name: Facility #8 Consolidated Gas Line

Location ID: 452596



**Photo 3 – Unmarked culvert. Excavation was backfilled imported material; surface appears to be road base or a similar material.**



**Photo 4 – Fill material adjacent to culvert.**



**Inspection Photos**  
**Location Name: Facility #8 Consolidated Gas Line**  
**Location ID: 452596**



**Photo 5 – Looking west; area of excavation related to Remediation #10757. Gravel is from the pigging station pad.**



**Photo 6 – Looking west; area of excavation related to Remediation #10757.**



## Inspection Photos

Location Name: Facility #8 Consolidated Gas Line

Location ID: 452596



**Photo 7 – Fill material**



**Photo 6 – Native soil**