

Clear Creek Resource Partners

Well Name: **True Ranch Fee 501-2703H**

Surface Location: True Ranch Fee 2703H East Pad Sec.27-T12N-R65W
North American Datum 1983 , US State Plane 1983, Colorado Northern Zone

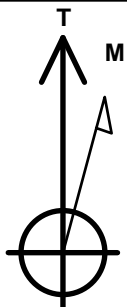
Ground Elevation: 5918.0

+N/-S+E/-W Northing Easting Latitude Longitude Slot
0.0 0.0 1598615.04 3237568.15 40.973394 -104.639714

Original Well Elev WELL @ 5941.0ft (Original Well Elev)

WELLBORE TARGET DETAILS

Name	TVD	+N/-S	+E/-W	Shape
SHL 1010'FSL & 380'FEL, Sec.27	1.0	0.0	0.0	Point
BHL 300'FSL & 732'FEL, Sec.3	8671.0	-11034.6	-404.1	Point
LPL 300'FNL & 732'FEL, Sec.34	8721.0	-1299.5	-334.8	Point



Azimuths to True North
Magnetic North: 8.40°

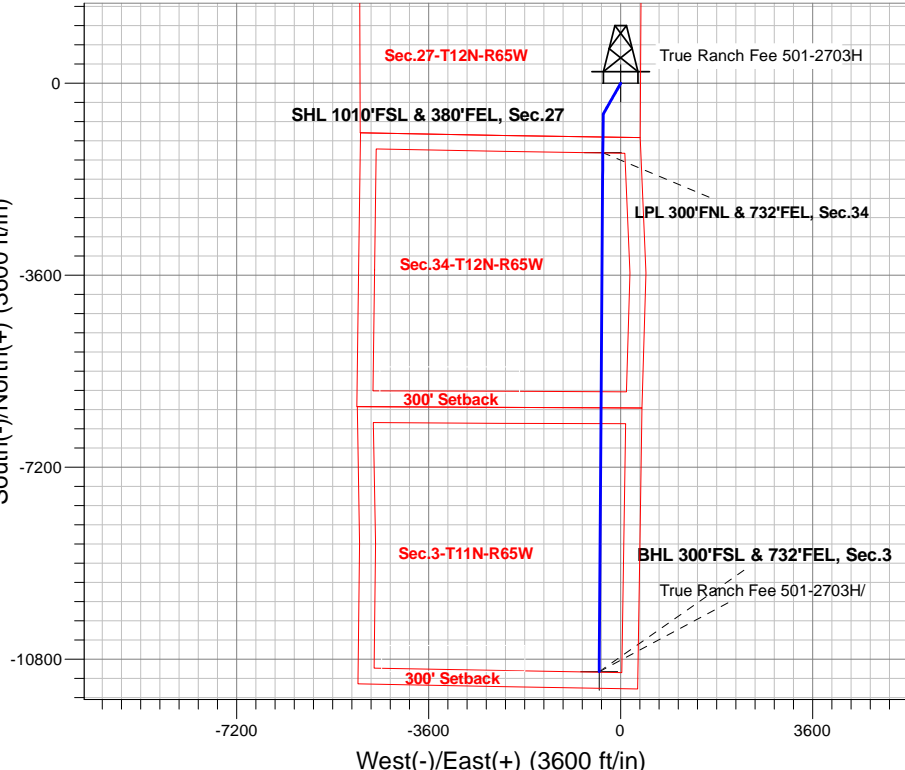
Magnetic Field
Strength: 52520.7snT
Dip Angle: 67.18°
Date: 8/28/2019
Model: HDGM

True Ranch Fee 2703H East Pad Sec.27-T12N-R65W
True Ranch Fee 501-2703H
Plan #3 (8-28-19)
13:23, August 28 2019

ANNOTATIONS

TVD	MD	Annotation
400.0	400.0	KOP - Start Build 1.50
6695.8	6730.1	Start Drop -2.00
7000.0	7034.8	Start 1004.8 hold at 7034.8 MD
8004.8	8039.6	Start Build 8.00
8721.0	9168.4	Start DLS 0.50 TFO 24.71
8721.0	9169.3	Start 9734.5 hold at 9169.3 MD
8671.0	18903.8	TD at 18903.8

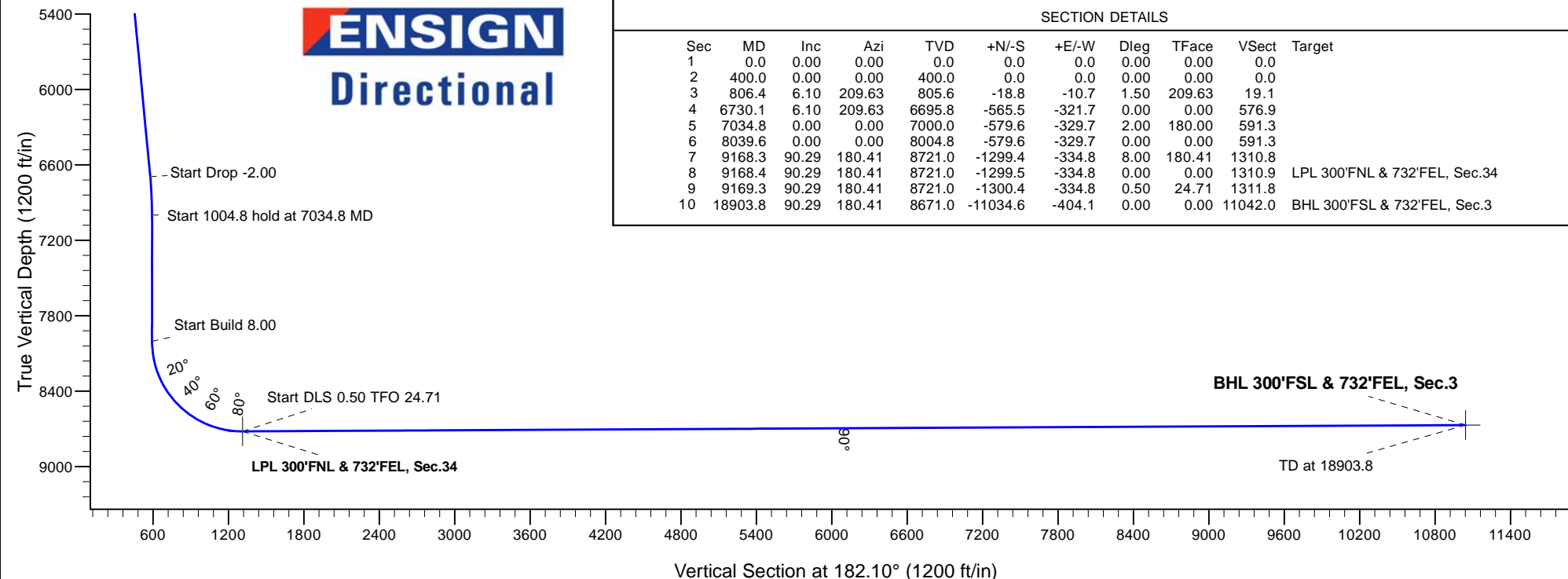
South(-)/North(+) (3600 ft/in)



ENSIGN
Directional

SECTION DETAILS

Sec	MD	Inc	Azi	TVD	+N/-S	+E/-W	Dleg	TFace	Vsect	Target
1	0.0	0.00	0.00	0.0	0.0	0.0	0.00	0.00	0.0	
2	400.0	0.00	0.00	400.0	0.0	0.0	0.00	0.00	0.0	
3	806.4	6.10	209.63	805.6	-18.8	-10.7	1.50	209.63	19.1	
4	6730.1	6.10	209.63	6695.8	-565.5	-321.7	0.00	0.00	576.9	
5	7034.8	0.00	0.00	7000.0	-579.6	-329.7	2.00	180.00	591.3	
6	8039.6	0.00	0.00	8004.8	-579.6	-329.7	0.00	0.00	591.3	
7	9168.3	90.29	180.41	8721.0	-1299.4	-334.8	8.00	180.41	1310.8	
8	9168.4	90.29	180.41	8721.0	-1299.5	-334.8	0.00	0.00	1310.9	LPL 300'FNL & 732'FEL, Sec.34
9	9169.3	90.29	180.41	8721.0	-1300.4	-334.8	0.50	24.71	1311.8	
10	18903.8	90.29	180.41	8671.0	-11034.6	-404.1	0.00	0.00	11042.0	BHL 300'FSL & 732'FEL, Sec.3





Clear Creek Resource Partners

SEC.27-T12N-R65W

True Ranch Fee 2703H East Pad Sec.27-T12N-R65W

True Ranch Fee 501-2703H

Wellbore #1

Plan: Plan #3 (8-28-19)

Standard Planning Report

28 August, 2019

Database:	US_EDM	Local Co-ordinate Reference:	Well True Ranch Fee 501-2703H
Company:	Clear Creek Resource Partners	TVD Reference:	WELL @ 5941.0ft (Original Well Elev)
Project:	SEC.27-T12N-R65W	MD Reference:	WELL @ 5941.0ft (Original Well Elev)
Site:	True Ranch Fee 2703H East Pad Sec.27-T12N-R65W	North Reference:	True
Well:	True Ranch Fee 501-2703H	Survey Calculation Method:	Minimum Curvature
Wellbore:	Wellbore #1		
Design:	Plan #3 (8-28-19)		

Project	SEC.27-T12N-R65W		
Map System:	US State Plane 1983	System Datum:	Mean Sea Level
Geo Datum:	North American Datum 1983		Using Well Reference Point
Map Zone:	Colorado Northern Zone		Using geodetic scale factor

Site	True Ranch Fee 2703H East Pad Sec.27-T12N-R65W				
Site Position:		Northing:	1,598,615.04 usft	Latitude:	40.973394
From:	Lat/Long	Easting:	3,237,568.15 usft	Longitude:	-104.639714
Position Uncertainty:	0.0 ft	Slot Radius:	13-3/16 "	Grid Convergence:	0.56

Well	True Ranch Fee 501-2703H					
Well Position	+N/-S	0.0 ft	Northing:	1,598,615.04 usft	Latitude:	40.973394
	+E/-W	0.0 ft	Easting:	3,237,568.15 usft	Longitude:	-104.639714
Position Uncertainty		0.0 ft	Wellhead Elevation:	0.0 ft	Ground Level:	5,918.0 ft

Wellbore	Wellbore #1				
Magnetics	Model Name	Sample Date	Declination (°)	Dip Angle (°)	Field Strength (nT)
	HDGM	8/28/2019	8.40	67.18	52,521

Design	Plan #3 (8-28-19)			
Audit Notes:				
Version:	Phase:	PROTOTYPE	Tie On Depth:	0.0
Vertical Section:	Depth From (TVD) (ft)	+N/-S (ft)	+E/-W (ft)	Direction (°)
	0.0	0.0	0.0	182.10

Plan Sections										
Measured Depth (ft)	Inclination (°)	Azimuth (°)	Vertical Depth (ft)	+N/-S (ft)	+E/-W (ft)	Dogleg Rate (°/100usft)	Build Rate (°/100usft)	Turn Rate (°/100usft)	TFO (°)	Target
0.0	0.00	0.00	0.0	0.0	0.0	0.00	0.00	0.00	0.00	
400.0	0.00	0.00	400.0	0.0	0.0	0.00	0.00	0.00	0.00	
806.4	6.10	209.63	805.6	-18.8	-10.7	1.50	1.50	0.00	209.63	
6,730.1	6.10	209.63	6,695.8	-565.5	-321.7	0.00	0.00	0.00	0.00	
7,034.8	0.00	0.00	7,000.0	-579.6	-329.7	2.00	-2.00	0.00	180.00	
8,039.6	0.00	0.00	8,004.8	-579.6	-329.7	0.00	0.00	0.00	0.00	
9,168.3	90.29	180.41	8,721.0	-1,299.4	-334.8	8.00	8.00	0.00	180.41	
9,168.4	90.29	180.41	8,721.0	-1,299.5	-334.8	0.00	0.00	0.00	0.00	LPL 300'FNL & 732'FI
9,169.3	90.29	180.41	8,721.0	-1,300.4	-334.8	0.50	0.45	0.21	24.71	
18,903.8	90.29	180.41	8,671.0	-11,034.6	-404.1	0.00	0.00	0.00	0.00	BHL 300'FSL & 732'F

Database:	US_EDM	Local Co-ordinate Reference:	Well True Ranch Fee 501-2703H
Company:	Clear Creek Resource Partners	TVD Reference:	WELL @ 5941.0ft (Original Well Elev)
Project:	SEC.27-T12N-R65W	MD Reference:	WELL @ 5941.0ft (Original Well Elev)
Site:	True Ranch Fee 2703H East Pad Sec.27-T12N-R65W	North Reference:	True
Well:	True Ranch Fee 501-2703H	Survey Calculation Method:	Minimum Curvature
Wellbore:	Wellbore #1		
Design:	Plan #3 (8-28-19)		

Planned Survey									
Measured Depth (ft)	Inclination (°)	Azimuth (°)	Vertical Depth (ft)	+N/-S (ft)	+E/-W (ft)	Vertical Section (ft)	Dogleg Rate (°/100usft)	Build Rate (°/100usft)	Turn Rate (°/100usft)
0.0	0.00	0.00	0.0	0.0	0.0	0.0	0.00	0.00	0.00
100.0	0.00	0.00	100.0	0.0	0.0	0.0	0.00	0.00	0.00
200.0	0.00	0.00	200.0	0.0	0.0	0.0	0.00	0.00	0.00
300.0	0.00	0.00	300.0	0.0	0.0	0.0	0.00	0.00	0.00
400.0	0.00	0.00	400.0	0.0	0.0	0.0	0.00	0.00	0.00
KOP - Start Build 1.50									
500.0	1.50	209.63	500.0	-1.1	-0.6	1.2	1.50	1.50	0.00
600.0	3.00	209.63	599.9	-4.6	-2.6	4.6	1.50	1.50	0.00
700.0	4.50	209.63	699.7	-10.2	-5.8	10.4	1.50	1.50	0.00
800.0	6.00	209.63	799.3	-18.2	-10.3	18.6	1.50	1.50	0.00
806.4	6.10	209.63	805.6	-18.8	-10.7	19.1	1.50	1.50	0.00
900.0	6.10	209.63	898.7	-27.4	-15.6	28.0	0.00	0.00	0.00
1,000.0	6.10	209.63	998.1	-36.6	-20.8	37.4	0.00	0.00	0.00
1,100.0	6.10	209.63	1,097.6	-45.9	-26.1	46.8	0.00	0.00	0.00
1,200.0	6.10	209.63	1,197.0	-55.1	-31.3	56.2	0.00	0.00	0.00
1,300.0	6.10	209.63	1,296.4	-64.3	-36.6	65.6	0.00	0.00	0.00
1,400.0	6.10	209.63	1,395.9	-73.6	-41.8	75.0	0.00	0.00	0.00
1,500.0	6.10	209.63	1,495.3	-82.8	-47.1	84.5	0.00	0.00	0.00
1,600.0	6.10	209.63	1,594.7	-92.0	-52.3	93.9	0.00	0.00	0.00
1,700.0	6.10	209.63	1,694.2	-101.3	-57.6	103.3	0.00	0.00	0.00
1,800.0	6.10	209.63	1,793.6	-110.5	-62.8	112.7	0.00	0.00	0.00
1,900.0	6.10	209.63	1,893.1	-119.7	-68.1	122.1	0.00	0.00	0.00
2,000.0	6.10	209.63	1,992.5	-128.9	-73.3	131.5	0.00	0.00	0.00
2,100.0	6.10	209.63	2,091.9	-138.2	-78.6	141.0	0.00	0.00	0.00
2,200.0	6.10	209.63	2,191.4	-147.4	-83.8	150.4	0.00	0.00	0.00
2,300.0	6.10	209.63	2,290.8	-156.6	-89.1	159.8	0.00	0.00	0.00
2,400.0	6.10	209.63	2,390.2	-165.9	-94.3	169.2	0.00	0.00	0.00
2,500.0	6.10	209.63	2,489.7	-175.1	-99.6	178.6	0.00	0.00	0.00
2,600.0	6.10	209.63	2,589.1	-184.3	-104.8	188.0	0.00	0.00	0.00
2,700.0	6.10	209.63	2,688.5	-193.6	-110.1	197.5	0.00	0.00	0.00
2,800.0	6.10	209.63	2,788.0	-202.8	-115.4	206.9	0.00	0.00	0.00
2,900.0	6.10	209.63	2,887.4	-212.0	-120.6	216.3	0.00	0.00	0.00
3,000.0	6.10	209.63	2,986.8	-221.2	-125.9	225.7	0.00	0.00	0.00
3,100.0	6.10	209.63	3,086.3	-230.5	-131.1	235.1	0.00	0.00	0.00
3,200.0	6.10	209.63	3,185.7	-239.7	-136.4	244.5	0.00	0.00	0.00
3,300.0	6.10	209.63	3,285.1	-248.9	-141.6	253.9	0.00	0.00	0.00
3,400.0	6.10	209.63	3,384.6	-258.2	-146.9	263.4	0.00	0.00	0.00
3,500.0	6.10	209.63	3,484.0	-267.4	-152.1	272.8	0.00	0.00	0.00
3,600.0	6.10	209.63	3,583.4	-276.6	-157.4	282.2	0.00	0.00	0.00
3,700.0	6.10	209.63	3,682.9	-285.9	-162.6	291.6	0.00	0.00	0.00
3,800.0	6.10	209.63	3,782.3	-295.1	-167.9	301.0	0.00	0.00	0.00
3,900.0	6.10	209.63	3,881.7	-304.3	-173.1	310.4	0.00	0.00	0.00
4,000.0	6.10	209.63	3,981.2	-313.5	-178.4	319.9	0.00	0.00	0.00
4,100.0	6.10	209.63	4,080.6	-322.8	-183.6	329.3	0.00	0.00	0.00
4,200.0	6.10	209.63	4,180.0	-332.0	-188.9	338.7	0.00	0.00	0.00
4,300.0	6.10	209.63	4,279.5	-341.2	-194.1	348.1	0.00	0.00	0.00
4,400.0	6.10	209.63	4,378.9	-350.5	-199.4	357.5	0.00	0.00	0.00
4,500.0	6.10	209.63	4,478.4	-359.7	-204.6	366.9	0.00	0.00	0.00
4,600.0	6.10	209.63	4,577.8	-368.9	-209.9	376.4	0.00	0.00	0.00
4,700.0	6.10	209.63	4,677.2	-378.1	-215.1	385.8	0.00	0.00	0.00
4,800.0	6.10	209.63	4,776.7	-387.4	-220.4	395.2	0.00	0.00	0.00
4,900.0	6.10	209.63	4,876.1	-396.6	-225.6	404.6	0.00	0.00	0.00
5,000.0	6.10	209.63	4,975.5	-405.8	-230.9	414.0	0.00	0.00	0.00

Database:	US_EDM	Local Co-ordinate Reference:	Well True Ranch Fee 501-2703H
Company:	Clear Creek Resource Partners	TVD Reference:	WELL @ 5941.0ft (Original Well Elev)
Project:	SEC.27-T12N-R65W	MD Reference:	WELL @ 5941.0ft (Original Well Elev)
Site:	True Ranch Fee 2703H East Pad Sec.27-T12N-R65W	North Reference:	True
Well:	True Ranch Fee 501-2703H	Survey Calculation Method:	Minimum Curvature
Wellbore:	Wellbore #1		
Design:	Plan #3 (8-28-19)		

Planned Survey									
Measured Depth (ft)	Inclination (°)	Azimuth (°)	Vertical Depth (ft)	+N/-S (ft)	+E/-W (ft)	Vertical Section (ft)	Dogleg Rate (°/100usft)	Build Rate (°/100usft)	Turn Rate (°/100usft)
5,100.0	6.10	209.63	5,075.0	-415.1	-236.1	423.4	0.00	0.00	0.00
5,200.0	6.10	209.63	5,174.4	-424.3	-241.4	432.8	0.00	0.00	0.00
5,300.0	6.10	209.63	5,273.8	-433.5	-246.6	442.3	0.00	0.00	0.00
5,400.0	6.10	209.63	5,373.3	-442.8	-251.9	451.7	0.00	0.00	0.00
5,500.0	6.10	209.63	5,472.7	-452.0	-257.1	461.1	0.00	0.00	0.00
5,600.0	6.10	209.63	5,572.1	-461.2	-262.4	470.5	0.00	0.00	0.00
5,700.0	6.10	209.63	5,671.6	-470.4	-267.6	479.9	0.00	0.00	0.00
5,800.0	6.10	209.63	5,771.0	-479.7	-272.9	489.3	0.00	0.00	0.00
5,900.0	6.10	209.63	5,870.4	-488.9	-278.1	498.8	0.00	0.00	0.00
6,000.0	6.10	209.63	5,969.9	-498.1	-283.4	508.2	0.00	0.00	0.00
6,100.0	6.10	209.63	6,069.3	-507.4	-288.6	517.6	0.00	0.00	0.00
6,200.0	6.10	209.63	6,168.7	-516.6	-293.9	527.0	0.00	0.00	0.00
6,300.0	6.10	209.63	6,268.2	-525.8	-299.1	536.4	0.00	0.00	0.00
6,400.0	6.10	209.63	6,367.6	-535.1	-304.4	545.8	0.00	0.00	0.00
6,500.0	6.10	209.63	6,467.0	-544.3	-309.6	555.3	0.00	0.00	0.00
6,600.0	6.10	209.63	6,566.5	-553.5	-314.9	564.7	0.00	0.00	0.00
6,700.0	6.10	209.63	6,665.9	-562.7	-320.1	574.1	0.00	0.00	0.00
6,730.1	6.10	209.63	6,695.8	-565.5	-321.7	576.9	0.00	0.00	0.00
Start Drop -2.00									
6,800.0	4.70	209.63	6,765.4	-571.2	-324.9	582.7	2.00	-2.00	0.00
6,900.0	2.70	209.63	6,865.2	-576.8	-328.1	588.5	2.00	-2.00	0.00
7,000.0	0.70	209.63	6,965.2	-579.4	-329.6	591.1	2.00	-2.00	0.00
7,034.8	0.00	209.63	7,000.0	-579.6	-329.7	591.3	2.00	-2.00	0.00
Start 1004.8 hold at 7034.8 MD									
7,100.0	0.00	0.00	7,065.2	-579.6	-329.7	591.3	0.00	0.00	0.00
7,200.0	0.00	0.00	7,165.2	-579.6	-329.7	591.3	0.00	0.00	0.00
7,300.0	0.00	0.00	7,265.2	-579.6	-329.7	591.3	0.00	0.00	0.00
7,400.0	0.00	0.00	7,365.2	-579.6	-329.7	591.3	0.00	0.00	0.00
7,500.0	0.00	0.00	7,465.2	-579.6	-329.7	591.3	0.00	0.00	0.00
7,600.0	0.00	0.00	7,565.2	-579.6	-329.7	591.3	0.00	0.00	0.00
7,700.0	0.00	0.00	7,665.2	-579.6	-329.7	591.3	0.00	0.00	0.00
7,800.0	0.00	0.00	7,765.2	-579.6	-329.7	591.3	0.00	0.00	0.00
7,900.0	0.00	0.00	7,865.2	-579.6	-329.7	591.3	0.00	0.00	0.00
8,000.0	0.00	0.00	7,965.2	-579.6	-329.7	591.3	0.00	0.00	0.00
8,039.6	0.00	0.00	8,004.8	-579.6	-329.7	591.3	0.00	0.00	0.00
Start Build 8.00									
8,100.0	4.83	180.41	8,065.1	-582.1	-329.7	593.8	7.99	7.99	0.00
8,200.0	12.83	180.41	8,163.8	-597.5	-329.8	609.1	8.00	8.00	0.00
8,300.0	20.83	180.41	8,259.5	-626.4	-330.0	638.1	8.00	8.00	0.00
8,400.0	28.83	180.41	8,350.2	-668.4	-330.3	680.0	8.00	8.00	0.00
8,500.0	36.83	180.41	8,434.1	-722.5	-330.7	734.1	8.00	8.00	0.00
8,600.0	44.83	180.41	8,509.7	-787.9	-331.2	799.4	8.00	8.00	0.00
8,700.0	52.83	180.41	8,575.5	-863.1	-331.7	874.6	8.00	8.00	0.00
8,800.0	60.83	180.41	8,630.2	-946.7	-332.3	958.2	8.00	8.00	0.00
8,900.0	68.83	180.41	8,672.7	-1,037.1	-332.9	1,048.6	8.00	8.00	0.00
9,000.0	76.83	180.41	8,702.2	-1,132.6	-333.6	1,144.0	8.00	8.00	0.00
9,100.0	84.83	180.41	8,718.1	-1,231.2	-334.3	1,242.6	8.00	8.00	0.00
9,168.3	90.29	180.41	8,721.0	-1,299.4	-334.8	1,310.8	8.00	8.00	0.00
9,168.4	90.29	180.41	8,721.0	-1,299.5	-334.8	1,310.9	0.00	0.00	0.00
Start DLS 0.50 TFO 24.71									
9,169.3	90.29	180.41	8,721.0	-1,300.4	-334.8	1,311.8	0.52	0.47	0.22
Start 9734.5 hold at 9169.3 MD									
9,200.0	90.29	180.41	8,720.8	-1,331.1	-335.0	1,342.5	0.00	0.00	0.00

Database:	US_EDM	Local Co-ordinate Reference:	Well True Ranch Fee 501-2703H
Company:	Clear Creek Resource Partners	TVD Reference:	WELL @ 5941.0ft (Original Well Elev)
Project:	SEC.27-T12N-R65W	MD Reference:	WELL @ 5941.0ft (Original Well Elev)
Site:	True Ranch Fee 2703H East Pad Sec.27-T12N-R65W	North Reference:	True
Well:	True Ranch Fee 501-2703H	Survey Calculation Method:	Minimum Curvature
Wellbore:	Wellbore #1		
Design:	Plan #3 (8-28-19)		

Planned Survey									
Measured Depth (ft)	Inclination (°)	Azimuth (°)	Vertical Depth (ft)	+N/-S (ft)	+E/-W (ft)	Vertical Section (ft)	Dogleg Rate (°/100usft)	Build Rate (°/100usft)	Turn Rate (°/100usft)
9,300.0	90.29	180.41	8,720.3	-1,431.1	-335.7	1,442.5	0.00	0.00	0.00
9,400.0	90.29	180.41	8,719.8	-1,531.1	-336.4	1,542.4	0.00	0.00	0.00
9,500.0	90.29	180.41	8,719.3	-1,631.1	-337.2	1,642.4	0.00	0.00	0.00
9,600.0	90.29	180.41	8,718.8	-1,731.1	-337.9	1,742.3	0.00	0.00	0.00
9,700.0	90.29	180.41	8,718.3	-1,831.1	-338.6	1,842.3	0.00	0.00	0.00
9,800.0	90.29	180.41	8,717.8	-1,931.1	-339.3	1,942.2	0.00	0.00	0.00
9,900.0	90.29	180.41	8,717.2	-2,031.1	-340.0	2,042.2	0.00	0.00	0.00
10,000.0	90.29	180.41	8,716.7	-2,131.1	-340.7	2,142.1	0.00	0.00	0.00
10,100.0	90.29	180.41	8,716.2	-2,231.1	-341.4	2,242.1	0.00	0.00	0.00
10,200.0	90.29	180.41	8,715.7	-2,331.1	-342.1	2,342.1	0.00	0.00	0.00
10,300.0	90.29	180.41	8,715.2	-2,431.1	-342.9	2,442.0	0.00	0.00	0.00
10,400.0	90.29	180.41	8,714.7	-2,531.1	-343.6	2,542.0	0.00	0.00	0.00
10,500.0	90.29	180.41	8,714.2	-2,631.1	-344.3	2,641.9	0.00	0.00	0.00
10,600.0	90.29	180.41	8,713.6	-2,731.1	-345.0	2,741.9	0.00	0.00	0.00
10,700.0	90.29	180.41	8,713.1	-2,831.1	-345.7	2,841.8	0.00	0.00	0.00
10,800.0	90.29	180.41	8,712.6	-2,931.1	-346.4	2,941.8	0.00	0.00	0.00
10,900.0	90.29	180.41	8,712.1	-3,031.1	-347.1	3,041.7	0.00	0.00	0.00
11,000.0	90.29	180.41	8,711.6	-3,131.1	-347.8	3,141.7	0.00	0.00	0.00
11,100.0	90.29	180.41	8,711.1	-3,231.1	-348.5	3,241.7	0.00	0.00	0.00
11,200.0	90.29	180.41	8,710.6	-3,331.1	-349.3	3,341.6	0.00	0.00	0.00
11,300.0	90.29	180.41	8,710.1	-3,431.1	-350.0	3,441.6	0.00	0.00	0.00
11,400.0	90.29	180.41	8,709.5	-3,531.0	-350.7	3,541.5	0.00	0.00	0.00
11,500.0	90.29	180.41	8,709.0	-3,631.0	-351.4	3,641.5	0.00	0.00	0.00
11,600.0	90.29	180.41	8,708.5	-3,731.0	-352.1	3,741.4	0.00	0.00	0.00
11,700.0	90.29	180.41	8,708.0	-3,831.0	-352.8	3,841.4	0.00	0.00	0.00
11,800.0	90.29	180.41	8,707.5	-3,931.0	-353.5	3,941.3	0.00	0.00	0.00
11,900.0	90.29	180.41	8,707.0	-4,031.0	-354.2	4,041.3	0.00	0.00	0.00
12,000.0	90.29	180.41	8,706.5	-4,131.0	-355.0	4,141.2	0.00	0.00	0.00
12,100.0	90.29	180.41	8,705.9	-4,231.0	-355.7	4,241.2	0.00	0.00	0.00
12,200.0	90.29	180.41	8,705.4	-4,331.0	-356.4	4,341.2	0.00	0.00	0.00
12,300.0	90.29	180.41	8,704.9	-4,431.0	-357.1	4,441.1	0.00	0.00	0.00
12,400.0	90.29	180.41	8,704.4	-4,531.0	-357.8	4,541.1	0.00	0.00	0.00
12,500.0	90.29	180.41	8,703.9	-4,631.0	-358.5	4,641.0	0.00	0.00	0.00
12,600.0	90.29	180.41	8,703.4	-4,731.0	-359.2	4,741.0	0.00	0.00	0.00
12,700.0	90.29	180.41	8,702.9	-4,831.0	-359.9	4,840.9	0.00	0.00	0.00
12,800.0	90.29	180.41	8,702.3	-4,931.0	-360.7	4,940.9	0.00	0.00	0.00
12,900.0	90.29	180.41	8,701.8	-5,031.0	-361.4	5,040.8	0.00	0.00	0.00
13,000.0	90.29	180.41	8,701.3	-5,131.0	-362.1	5,140.8	0.00	0.00	0.00
13,100.0	90.29	180.41	8,700.8	-5,231.0	-362.8	5,240.8	0.00	0.00	0.00
13,200.0	90.29	180.41	8,700.3	-5,331.0	-363.5	5,340.7	0.00	0.00	0.00
13,300.0	90.29	180.41	8,699.8	-5,431.0	-364.2	5,440.7	0.00	0.00	0.00
13,400.0	90.29	180.41	8,699.3	-5,531.0	-364.9	5,540.6	0.00	0.00	0.00
13,500.0	90.29	180.41	8,698.8	-5,631.0	-365.6	5,640.6	0.00	0.00	0.00
13,600.0	90.29	180.41	8,698.2	-5,731.0	-366.3	5,740.5	0.00	0.00	0.00
13,700.0	90.29	180.41	8,697.7	-5,831.0	-367.1	5,840.5	0.00	0.00	0.00
13,800.0	90.29	180.41	8,697.2	-5,931.0	-367.8	5,940.4	0.00	0.00	0.00
13,900.0	90.29	180.41	8,696.7	-6,031.0	-368.5	6,040.4	0.00	0.00	0.00
14,000.0	90.29	180.41	8,696.2	-6,130.9	-369.2	6,140.4	0.00	0.00	0.00
14,100.0	90.29	180.41	8,695.7	-6,230.9	-369.9	6,240.3	0.00	0.00	0.00
14,200.0	90.29	180.41	8,695.2	-6,330.9	-370.6	6,340.3	0.00	0.00	0.00
14,300.0	90.29	180.41	8,694.6	-6,430.9	-371.3	6,440.2	0.00	0.00	0.00
14,400.0	90.29	180.41	8,694.1	-6,530.9	-372.0	6,540.2	0.00	0.00	0.00
14,500.0	90.29	180.41	8,693.6	-6,630.9	-372.8	6,640.1	0.00	0.00	0.00

Database:	US_EDM	Local Co-ordinate Reference:	Well True Ranch Fee 501-2703H
Company:	Clear Creek Resource Partners	TVD Reference:	WELL @ 5941.0ft (Original Well Elev)
Project:	SEC.27-T12N-R65W	MD Reference:	WELL @ 5941.0ft (Original Well Elev)
Site:	True Ranch Fee 2703H East Pad Sec.27-T12N-R65W	North Reference:	True
Well:	True Ranch Fee 501-2703H	Survey Calculation Method:	Minimum Curvature
Wellbore:	Wellbore #1		
Design:	Plan #3 (8-28-19)		

Planned Survey									
Measured Depth (ft)	Inclination (°)	Azimuth (°)	Vertical Depth (ft)	+N/-S (ft)	+E/-W (ft)	Vertical Section (ft)	Dogleg Rate (°/100usft)	Build Rate (°/100usft)	Turn Rate (°/100usft)
14,600.0	90.29	180.41	8,693.1	-6,730.9	-373.5	6,740.1	0.00	0.00	0.00
14,700.0	90.29	180.41	8,692.6	-6,830.9	-374.2	6,840.0	0.00	0.00	0.00
14,800.0	90.29	180.41	8,692.1	-6,930.9	-374.9	6,940.0	0.00	0.00	0.00
14,900.0	90.29	180.41	8,691.6	-7,030.9	-375.6	7,039.9	0.00	0.00	0.00
15,000.0	90.29	180.41	8,691.0	-7,130.9	-376.3	7,139.9	0.00	0.00	0.00
15,100.0	90.29	180.41	8,690.5	-7,230.9	-377.0	7,239.9	0.00	0.00	0.00
15,200.0	90.29	180.41	8,690.0	-7,330.9	-377.7	7,339.8	0.00	0.00	0.00
15,300.0	90.29	180.41	8,689.5	-7,430.9	-378.4	7,439.8	0.00	0.00	0.00
15,400.0	90.29	180.41	8,689.0	-7,530.9	-379.2	7,539.7	0.00	0.00	0.00
15,500.0	90.29	180.41	8,688.5	-7,630.9	-379.9	7,639.7	0.00	0.00	0.00
15,600.0	90.29	180.41	8,688.0	-7,730.9	-380.6	7,739.6	0.00	0.00	0.00
15,700.0	90.29	180.41	8,687.5	-7,830.9	-381.3	7,839.6	0.00	0.00	0.00
15,800.0	90.29	180.41	8,686.9	-7,930.9	-382.0	7,939.5	0.00	0.00	0.00
15,900.0	90.29	180.41	8,686.4	-8,030.9	-382.7	8,039.5	0.00	0.00	0.00
16,000.0	90.29	180.41	8,685.9	-8,130.9	-383.4	8,139.5	0.00	0.00	0.00
16,100.0	90.29	180.41	8,685.4	-8,230.9	-384.1	8,239.4	0.00	0.00	0.00
16,200.0	90.29	180.41	8,684.9	-8,330.9	-384.9	8,339.4	0.00	0.00	0.00
16,300.0	90.29	180.41	8,684.4	-8,430.9	-385.6	8,439.3	0.00	0.00	0.00
16,400.0	90.29	180.41	8,683.9	-8,530.9	-386.3	8,539.3	0.00	0.00	0.00
16,500.0	90.29	180.41	8,683.3	-8,630.9	-387.0	8,639.2	0.00	0.00	0.00
16,600.0	90.29	180.41	8,682.8	-8,730.8	-387.7	8,739.2	0.00	0.00	0.00
16,700.0	90.29	180.41	8,682.3	-8,830.8	-388.4	8,839.1	0.00	0.00	0.00
16,800.0	90.29	180.41	8,681.8	-8,930.8	-389.1	8,939.1	0.00	0.00	0.00
16,900.0	90.29	180.41	8,681.3	-9,030.8	-389.8	9,039.1	0.00	0.00	0.00
17,000.0	90.29	180.41	8,680.8	-9,130.8	-390.5	9,139.0	0.00	0.00	0.00
17,100.0	90.29	180.41	8,680.3	-9,230.8	-391.3	9,239.0	0.00	0.00	0.00
17,200.0	90.29	180.41	8,679.8	-9,330.8	-392.0	9,338.9	0.00	0.00	0.00
17,300.0	90.29	180.41	8,679.2	-9,430.8	-392.7	9,438.9	0.00	0.00	0.00
17,400.0	90.29	180.41	8,678.7	-9,530.8	-393.4	9,538.8	0.00	0.00	0.00
17,500.0	90.29	180.41	8,678.2	-9,630.8	-394.1	9,638.8	0.00	0.00	0.00
17,600.0	90.29	180.41	8,677.7	-9,730.8	-394.8	9,738.7	0.00	0.00	0.00
17,700.0	90.29	180.41	8,677.2	-9,830.8	-395.5	9,838.7	0.00	0.00	0.00
17,800.0	90.29	180.41	8,676.7	-9,930.8	-396.2	9,938.7	0.00	0.00	0.00
17,900.0	90.29	180.41	8,676.2	-10,030.8	-397.0	10,038.6	0.00	0.00	0.00
18,000.0	90.29	180.41	8,675.6	-10,130.8	-397.7	10,138.6	0.00	0.00	0.00
18,100.0	90.29	180.41	8,675.1	-10,230.8	-398.4	10,238.5	0.00	0.00	0.00
18,200.0	90.29	180.41	8,674.6	-10,330.8	-399.1	10,338.5	0.00	0.00	0.00
18,300.0	90.29	180.41	8,674.1	-10,430.8	-399.8	10,438.4	0.00	0.00	0.00
18,400.0	90.29	180.41	8,673.6	-10,530.8	-400.5	10,538.4	0.00	0.00	0.00
18,500.0	90.29	180.41	8,673.1	-10,630.8	-401.2	10,638.3	0.00	0.00	0.00
18,600.0	90.29	180.41	8,672.6	-10,730.8	-401.9	10,738.3	0.00	0.00	0.00
18,700.0	90.29	180.41	8,672.0	-10,830.8	-402.6	10,838.2	0.00	0.00	0.00
18,800.0	90.29	180.41	8,671.5	-10,930.8	-403.4	10,938.2	0.00	0.00	0.00
18,900.0	90.29	180.41	8,671.0	-11,030.8	-404.1	11,038.2	0.00	0.00	0.00
18,903.8	90.29	180.41	8,671.0	-11,034.6	-404.1	11,042.0	0.00	0.00	0.00
TD at 18903.8									

Database:	US_EDM	Local Co-ordinate Reference:	Well True Ranch Fee 501-2703H
Company:	Clear Creek Resource Partners	TVD Reference:	WELL @ 5941.0ft (Original Well Elev)
Project:	SEC.27-T12N-R65W	MD Reference:	WELL @ 5941.0ft (Original Well Elev)
Site:	True Ranch Fee 2703H East Pad Sec.27-T12N-R65W	North Reference:	True
Well:	True Ranch Fee 501-2703H	Survey Calculation Method:	Minimum Curvature
Wellbore:	Wellbore #1		
Design:	Plan #3 (8-28-19)		

Design Targets									
Target Name - hit/miss target - Shape	Dip Angle (°)	Dip Dir. (°)	TVD (ft)	+N/-S (ft)	+E/-W (ft)	Northing (usft)	Easting (usft)	Latitude	Longitude
SHL 1010'FSL & 380'FE - plan hits target center - Point	0.00	0.00	1.0	0.0	0.0	1,598,615.04	3,237,568.15	40.973394	-104.639714
BHL 300'FSL & 732'FEL - plan hits target center - Point	0.00	0.00	8,671.0	-11,034.6	-404.1	1,587,576.66	3,237,271.11	40.943108	-104.641177
LPL 300'FNL & 732'FEL - plan hits target center - Point	0.00	0.00	8,721.0	-1,299.5	-334.8	1,597,312.31	3,237,245.97	40.969827	-104.640927

Plan Annotations				
Measured Depth (ft)	Vertical Depth (ft)	Local Coordinates		Comment
		+N/-S (ft)	+E/-W (ft)	
400.0	400.0	0.0	0.0	KOP - Start Build 1.50
6,730.1	6,695.8	-18.8	-10.7	Start Drop -2.00
7,034.8	7,000.0	-565.5	-321.7	Start 1004.8 hold at 7034.8 MD
8,039.6	8,004.8	-579.6	-329.7	Start Build 8.00
9,168.4	8,721.0	-579.6	-329.7	Start DLS 0.50 TFO 24.71
9,169.3	8,721.0	-1,299.5	-334.8	Start 9734.5 hold at 9169.3 MD
18,903.8	8,671.0	-1,300.4	-334.8	TD at 18903.8



Clear Creek Resource Partners

SEC.27-T12N-R65W

True Ranch Fee 2703H East Pad Sec.27-T12N-R65W

True Ranch Fee 501-2703H

Wellbore #1

Plan #3 (8-28-19)

Anticollision Report

28 August, 2019

Company:	Clear Creek Resource Partners	Local Co-ordinate Reference:	Well True Ranch Fee 501-2703H
Project:	SEC.27-T12N-R65W	TVD Reference:	WELL @ 5941.0ft (Original Well Elev)
Reference Site:	True Ranch Fee 2703H East Pad Sec.27-T12N-R65W	MD Reference:	WELL @ 5941.0ft (Original Well Elev)
Site Error:	0.0 ft	North Reference:	True
Reference Well:	True Ranch Fee 501-2703H	Survey Calculation Method:	Minimum Curvature
Well Error:	0.0 ft	Output errors are at	2.00 sigma
Reference Wellbore	Wellbore #1	Database:	US_EDM
Reference Design:	Plan #3 (8-28-19)	Offset TVD Reference:	Offset Datum

Reference	Plan #3 (8-28-19)		
Filter type:	NO GLOBAL FILTER: Using user defined selection & filtering criteria		
Interpolation Method:	Stations	Error Model:	ISCWSA
Depth Range:	Unlimited	Scan Method:	Closest Approach 3D
Results Limited by:	Maximum center-center distance of 800.0 ft	Error Surface:	Elliptical Conic
Warning Levels Evaluated at:	2.00 Sigma	Casing Method:	Not applied

Survey Tool Program	Date 8/28/2019			
From (ft)	To (ft)	Survey (Wellbore)	Tool Name	Description
0.0	18,903.8	Plan #3 (8-28-19) (Wellbore #1)	MWD	MWD - Standard

Summary						
Site Name	Reference Measured Depth (ft)	Offset Measured Depth (ft)	Distance Between Centres (ft)	Distance Between Ellipses (ft)	Separation Factor	Warning
Offset Well - Wellbore - Design						
True Ranch Fee 2703H East Pad Sec.27-T12N-R65W						
True Ranch Fee 201-2703H - Wellbore #1 - Plan #2 (8-2	400.0	399.0	59.9	58.4	38.144	CC
True Ranch Fee 201-2703H - Wellbore #1 - Plan #2 (8-2	18,904.3	18,698.7	433.3	50.9	1.133	Level 2, ES, SF
True Ranch Fee 202-2703H - Wellbore #1 - Plan #2 (8-2	1,521.5	1,525.9	21.2	14.2	3.005	CC, ES
True Ranch Fee 202-2703H - Wellbore #1 - Plan #2 (8-2	18,904.3	18,708.9	427.0	39.0	1.100	Level 2, SF
True Ranch Fee 203-2703H - Wellbore #1 - Plan #2 (8-2	166.3	167.3	30.1	29.6	57.317	CC
True Ranch Fee 203-2703H - Wellbore #1 - Plan #2 (8-2	200.0	201.0	30.1	29.4	44.505	ES
True Ranch Fee 203-2703H - Wellbore #1 - Plan #2 (8-2	806.4	800.0	63.9	60.5	19.042	SF
True Ranch Fee 2703H West Pad Sec.27-T12N-R65W						
True Ranch Fee 204-2703H - Wellbore #1 - Plan #1 (1-2						Out of range
True Ranch Fee 205-2703H - Wellbore #1 - Plan #1 (1-2						Out of range
True Ranch Fee 206-2703H - Wellbore #1 - Plan #1 (1-2						Out of range
True Ranch Fee 207-2703H - Wellbore #1 - Plan #1 (1-2						Out of range
True Ranch Fee 208-2703H - Wellbore #1 - Plan #1 (1-2						Out of range
True Ranch Fee 502-2703H - Wellbore #1 - Plan #2 (11-6						Out of range
True Ranch Fee 503-2703H - Wellbore #1 - Plan #2 (11-6						Out of range
True Ranch Fee 504-2703H - Wellbore #1 - Plan #2 (11-6						Out of range

Offset Design	True Ranch Fee 2703H East Pad Sec.27-T12N-R65W - True Ranch Fee 201-2703H - Wellbore #1 - Pla												Offset Site Error:	0.0 ft
Survey Program:	0-MWD												Offset Well Error:	0.0 ft
Reference		Offset		Semi Major Axis		Highside Toolface (°)	Offset Wellbore Centre		Distance		Minimum Separation (ft)	Separation Factor	Warning	
Measured Depth (ft)	Vertical Depth (ft)	Measured Depth (ft)	Vertical Depth (ft)	Reference (ft)	Offset (ft)		+N/-S (ft)	+E/-W (ft)	Between Centres (ft)	Between Ellipses (ft)				
0.0	0.0	0.0	0.0	0.0	0.0	90.70	-0.7	59.9	59.9					
100.0	100.0	99.0	99.0	0.1	0.1	90.70	-0.7	59.9	59.9	59.7	0.22	267.961		
200.0	200.0	199.0	199.0	0.3	0.3	90.70	-0.7	59.9	59.9	59.3	0.67	89.172		
300.0	300.0	299.0	299.0	0.6	0.6	90.70	-0.7	59.9	59.9	58.8	1.12	53.432		
400.0	400.0	399.0	399.0	0.8	0.8	90.70	-0.7	59.9	59.9	58.4	1.57	38.144	CC	
500.0	500.0	499.0	499.0	1.0	1.0	-120.01	-0.7	59.9	60.6	58.6	2.00	30.331		
600.0	599.9	598.9	598.9	1.2	1.2	-123.10	-0.7	59.9	62.6	60.2	2.42	25.924		
700.0	699.7	698.7	698.7	1.4	1.5	-127.77	-0.7	59.9	66.4	63.6	2.86	23.267		
806.4	805.6	804.6	804.6	1.6	1.7	-133.81	-0.7	59.9	72.9	69.5	3.34	21.806		
900.0	898.7	897.7	897.7	1.9	1.9	-138.93	-0.7	59.9	80.1	76.3	3.77	21.257		

CC - Min centre to center distance or convergent point, SF - min separation factor, ES - min ellipse separation

Company:	Clear Creek Resource Partners	Local Co-ordinate Reference:	Well True Ranch Fee 501-2703H
Project:	SEC.27-T12N-R65W	TVD Reference:	WELL @ 5941.0ft (Original Well Elev)
Reference Site:	True Ranch Fee 2703H East Pad Sec.27-T12N-R65W	MD Reference:	WELL @ 5941.0ft (Original Well Elev)
Site Error:	0.0 ft	North Reference:	True
Reference Well:	True Ranch Fee 501-2703H	Survey Calculation Method:	Minimum Curvature
Well Error:	0.0 ft	Output errors are at	2.00 sigma
Reference Wellbore	Wellbore #1	Database:	US_EDM
Reference Design:	Plan #3 (8-28-19)	Offset TVD Reference:	Offset Datum

Offset Design True Ranch Fee 2703H East Pad Sec.27-T12N-R65W - True Ranch Fee 201-2703H - Wellbore #1 - Pla													Offset Site Error:	0.0 ft
Survey Program: 0-MWD													Offset Well Error:	0.0 ft
Reference		Offset		Semi Major Axis			Distance							Warning
Measured Depth (ft)	Vertical Depth (ft)	Measured Depth (ft)	Vertical Depth (ft)	Reference (ft)	Offset (ft)	Highside Toolface (°)	Offset Wellbore Centre +N/-S (ft)	+E/-W (ft)	Between Centres (ft)	Between Ellipses (ft)	Minimum Separation (ft)	Separation Factor		
1,000.0	998.1	997.1	997.1	2.2	2.1	-143.45	-0.7	59.9	88.4	84.2	4.22	20.929		
1,100.0	1,097.6	1,097.8	1,097.8	2.4	2.3	-146.57	-2.0	59.9	96.5	91.9	4.65	20.744		
1,200.0	1,197.0	1,198.8	1,198.7	2.7	2.5	-147.95	-5.9	59.7	103.6	98.5	5.07	20.439		
1,300.0	1,296.4	1,300.1	1,299.8	3.0	2.7	-147.95	-12.5	59.5	109.3	103.8	5.50	19.874		
1,400.0	1,395.9	1,401.4	1,400.7	3.3	2.9	-146.78	-21.8	59.2	113.7	107.7	5.96	19.088		
1,500.0	1,495.3	1,502.5	1,501.1	3.6	3.1	-144.55	-33.7	58.8	116.9	110.5	6.45	18.140		
1,600.0	1,594.7	1,602.4	1,600.1	3.9	3.4	-142.04	-46.5	58.4	119.9	112.9	6.96	17.221		
1,700.0	1,694.2	1,702.2	1,699.1	4.2	3.6	-139.65	-59.2	58.0	123.1	115.6	7.50	16.410		
1,800.0	1,793.6	1,802.0	1,798.1	4.5	3.9	-137.38	-72.0	57.5	126.5	118.4	8.06	15.698		
1,900.0	1,893.1	1,901.8	1,897.1	4.8	4.2	-135.24	-84.8	57.1	130.1	121.5	8.63	15.072		
2,000.0	1,992.5	2,001.6	1,996.1	5.1	4.5	-133.21	-97.5	56.7	133.8	124.6	9.22	14.521		
2,100.0	2,091.9	2,101.5	2,095.1	5.4	4.8	-131.30	-110.3	56.2	137.8	127.9	9.81	14.038		
2,200.0	2,191.4	2,201.3	2,194.1	5.7	5.1	-129.49	-123.1	55.8	141.8	131.4	10.42	13.612		
2,300.0	2,290.8	2,301.1	2,293.1	6.0	5.4	-127.78	-135.8	55.4	146.0	135.0	11.03	13.236		
2,400.0	2,390.2	2,400.9	2,392.1	6.3	5.7	-126.17	-148.6	55.0	150.3	138.7	11.65	12.904		
2,500.0	2,489.7	2,500.7	2,491.1	6.6	6.0	-124.66	-161.3	54.5	154.8	142.5	12.27	12.609		
2,600.0	2,589.1	2,600.6	2,590.1	6.9	6.3	-123.22	-174.1	54.1	159.3	146.4	12.90	12.348		
2,700.0	2,688.5	2,700.4	2,689.1	7.2	6.6	-121.87	-186.9	53.7	163.9	150.4	13.53	12.115		
2,800.0	2,788.0	2,800.2	2,788.1	7.5	6.9	-120.59	-199.6	53.2	168.6	154.5	14.16	11.907		
2,900.0	2,887.4	2,900.0	2,887.1	7.8	7.3	-119.39	-212.4	52.8	173.4	158.6	14.80	11.721		
3,000.0	2,986.8	2,999.8	2,986.1	8.2	7.6	-118.24	-225.2	52.4	178.3	162.8	15.43	11.554		
3,100.0	3,086.3	3,099.7	3,085.1	8.5	7.9	-117.16	-237.9	52.0	183.2	167.1	16.07	11.404		
3,200.0	3,185.7	3,199.5	3,184.1	8.8	8.2	-116.14	-250.7	51.5	188.2	171.5	16.70	11.268		
3,300.0	3,285.1	3,299.3	3,283.1	9.1	8.5	-115.17	-263.5	51.1	193.2	175.9	17.34	11.146		
3,400.0	3,384.6	3,399.1	3,382.1	9.4	8.9	-114.24	-276.2	50.7	198.3	180.4	17.98	11.035		
3,500.0	3,484.0	3,499.0	3,481.1	9.7	9.2	-113.37	-289.0	50.2	203.5	184.9	18.61	10.934		
3,600.0	3,583.4	3,598.8	3,580.1	10.0	9.5	-112.54	-301.8	49.8	208.7	189.4	19.25	10.842		
3,700.0	3,682.9	3,698.6	3,679.1	10.3	9.8	-111.75	-314.5	49.4	213.9	194.0	19.88	10.759		
3,800.0	3,782.3	3,798.4	3,778.1	10.6	10.2	-110.99	-327.3	49.0	219.2	198.7	20.52	10.682		
3,900.0	3,881.7	3,898.2	3,877.1	10.9	10.5	-110.27	-340.0	48.5	224.5	203.4	21.16	10.612		
4,000.0	3,981.2	3,998.1	3,976.1	11.2	10.8	-109.59	-352.8	48.1	229.9	208.1	21.79	10.548		
4,100.0	4,080.6	4,097.9	4,075.1	11.5	11.2	-108.94	-365.6	47.7	235.2	212.8	22.43	10.490		
4,200.0	4,180.0	4,197.7	4,174.1	11.8	11.5	-108.31	-378.3	47.2	240.6	217.6	23.06	10.435		
4,300.0	4,279.5	4,297.5	4,273.1	12.1	11.8	-107.72	-391.1	46.8	246.1	222.4	23.69	10.386		
4,400.0	4,378.9	4,397.3	4,372.1	12.4	12.1	-107.14	-403.9	46.4	251.5	227.2	24.33	10.340		
4,500.0	4,478.4	4,497.2	4,471.1	12.7	12.5	-106.60	-416.6	46.0	257.0	232.1	24.96	10.297		
4,600.0	4,577.8	4,597.0	4,570.1	13.1	12.8	-106.07	-429.4	45.5	262.5	236.9	25.59	10.258		
4,700.0	4,677.2	4,696.8	4,669.1	13.4	13.1	-105.57	-442.2	45.1	268.1	241.8	26.22	10.221		
4,800.0	4,776.7	4,796.6	4,768.1	13.7	13.5	-105.09	-454.9	44.7	273.6	246.7	26.86	10.188		
4,900.0	4,876.1	4,896.4	4,867.1	14.0	13.8	-104.63	-467.7	44.2	279.2	251.7	27.49	10.156		
5,000.0	4,975.5	4,996.3	4,966.1	14.3	14.1	-104.18	-480.5	43.8	284.7	256.6	28.12	10.127		
5,100.0	5,075.0	5,096.1	5,065.1	14.6	14.5	-103.75	-493.2	43.4	290.3	261.6	28.75	10.100		
5,200.0	5,174.4	5,195.9	5,164.1	14.9	14.8	-103.34	-506.0	42.9	296.0	266.6	29.38	10.074		
5,300.0	5,273.8	5,295.7	5,263.1	15.2	15.1	-102.95	-518.7	42.5	301.6	271.6	30.01	10.051		
5,400.0	5,373.3	5,395.5	5,362.1	15.5	15.5	-102.57	-531.5	42.1	307.2	276.6	30.63	10.029		
5,500.0	5,472.7	5,495.4	5,461.1	15.8	15.8	-102.20	-544.3	41.7	312.9	281.6	31.26	10.008		
5,600.0	5,572.1	5,595.2	5,560.1	16.1	16.1	-101.84	-557.0	41.2	318.5	286.7	31.89	9.989		
5,700.0	5,671.6	5,695.8	5,659.9	16.4	16.4	-101.52	-569.8	40.8	324.2	291.7	32.51	9.973		
5,800.0	5,771.0	5,798.9	5,762.5	16.7	16.7	-101.25	-582.6	40.5	329.1	296.1	33.04	9.962		
5,900.0	5,870.4	5,902.0	5,865.3	17.0	16.9	-101.00	-595.4	40.2	333.1	299.6	33.54	9.950		
6,000.0	5,969.9	6,004.7	5,968.0	17.3	17.0	-100.77	-608.2	40.1	336.2	302.2	34.02	9.944		

CC - Min centre to center distance or convergent point, SF - min separation factor, ES - min ellipse separation

Company:	Clear Creek Resource Partners	Local Co-ordinate Reference:	Well True Ranch Fee 501-2703H
Project:	SEC.27-T12N-R65W	TVD Reference:	WELL @ 5941.0ft (Original Well Elev)
Reference Site:	True Ranch Fee 2703H East Pad Sec.27-T12N-R65W	MD Reference:	WELL @ 5941.0ft (Original Well Elev)
Site Error:	0.0 ft	North Reference:	True
Reference Well:	True Ranch Fee 501-2703H	Survey Calculation Method:	Minimum Curvature
Well Error:	0.0 ft	Output errors are at	2.00 sigma
Reference Wellbore	Wellbore #1	Database:	US_EDM
Reference Design:	Plan #3 (8-28-19)	Offset TVD Reference:	Offset Datum

Offset Design True Ranch Fee 2703H East Pad Sec.27-T12N-R65W - True Ranch Fee 201-2703H - Wellbore #1 - Pla													Offset Site Error:	0.0 ft
Survey Program: 0-MWD													Offset Well Error:	0.0 ft
Reference		Offset		Semi Major Axis			Distance							Warning
Measured Depth (ft)	Vertical Depth (ft)	Measured Depth (ft)	Vertical Depth (ft)	Reference (ft)	Offset (ft)	Highside Toolface (°)	Offset Wellbore Centre +N/-S (ft)	+E/-W (ft)	Between Centres (ft)	Between Ellipses (ft)	Minimum Separation (ft)	Separation Factor		
6,100.0	6,069.3	6,105.0	6,068.3	17.7	17.2	-105.44	-590.0	40.1	339.0	304.5	34.47	9.833		
6,200.0	6,168.7	6,204.4	6,167.7	18.0	17.3	-107.14	-590.0	40.1	342.0	307.1	34.90	9.799		
6,300.0	6,268.2	6,303.9	6,267.2	18.3	17.5	-108.82	-590.0	40.1	345.3	309.9	35.31	9.777		
6,400.0	6,367.6	6,403.3	6,366.6	18.6	17.6	-110.46	-590.0	40.1	348.8	313.1	35.72	9.767		
6,500.0	6,467.0	6,502.7	6,466.0	18.9	17.7	-112.07	-590.0	40.1	352.7	316.6	36.11	9.768		
6,600.0	6,566.5	6,602.2	6,565.5	19.2	17.9	-113.64	-590.0	40.1	356.9	320.4	36.49	9.778		
6,700.0	6,665.9	6,701.6	6,664.9	19.5	18.0	-115.18	-590.0	40.1	361.3	324.4	36.87	9.798		
6,730.1	6,695.8	6,731.5	6,694.8	19.6	18.1	-115.63	-590.0	40.1	362.6	325.7	36.98	9.806		
6,800.0	6,765.4	6,801.1	6,764.4	19.8	18.2	-116.61	-590.0	40.1	365.6	328.3	37.22	9.823		
6,900.0	6,865.2	6,900.9	6,864.2	19.9	18.3	-117.56	-590.0	40.1	368.5	331.0	37.50	9.827		
7,000.0	6,965.2	7,000.9	6,964.2	20.1	18.5	-117.99	-590.0	40.1	369.9	332.1	37.77	9.792		
7,034.8	7,000.0	7,035.7	6,999.0	20.1	18.5	91.62	-590.0	40.1	370.0	332.1	37.85	9.774		
7,100.0	7,065.2	7,100.9	7,064.2	20.2	18.6	91.62	-590.0	40.1	370.0	331.9	38.06	9.722		
7,200.0	7,165.2	7,200.9	7,164.2	20.4	18.8	91.62	-590.0	40.1	370.0	331.6	38.35	9.648		
7,300.0	7,265.2	7,300.9	7,264.2	20.5	18.9	91.62	-590.0	40.1	370.0	331.3	38.64	9.575		
7,400.0	7,365.2	7,400.9	7,364.2	20.6	19.1	91.62	-590.0	40.1	370.0	331.0	38.94	9.502		
7,500.0	7,465.2	7,500.9	7,464.2	20.8	19.2	91.62	-590.0	40.1	370.0	330.7	39.24	9.429		
7,600.0	7,565.2	7,600.9	7,564.2	20.9	19.4	91.62	-590.0	40.1	370.0	330.4	39.54	9.357		
7,700.0	7,665.2	7,700.9	7,664.2	21.1	19.6	91.62	-590.0	40.1	370.0	330.1	39.85	9.285		
7,800.0	7,765.2	7,800.9	7,764.2	21.2	19.7	91.62	-590.0	40.1	370.0	329.8	40.16	9.214		
7,833.1	7,798.3	7,834.0	7,797.3	21.3	19.8	91.62	-590.0	40.1	370.0	329.7	40.26	9.190		
7,900.0	7,865.2	7,900.0	7,863.2	21.4	19.9	91.96	-592.3	40.1	370.0	329.5	40.52	9.133		
8,000.0	7,965.2	7,996.7	7,958.8	21.5	20.3	94.14	-606.3	40.0	370.7	329.6	41.10	9.020		
8,039.6	8,004.8	8,033.7	7,994.7	21.6	20.4	95.49	-615.1	40.0	371.5	330.1	41.38	8.977		
8,050.0	8,015.2	8,043.2	8,003.9	21.6	20.5	-84.51	-617.7	40.0	371.8	330.3	41.47	8.964		
8,100.0	8,065.1	8,088.7	8,047.2	21.7	20.7	-82.59	-631.6	39.9	373.3	331.4	41.88	8.913		
8,150.0	8,114.7	8,133.6	8,089.0	21.8	20.9	-80.73	-648.0	39.8	375.2	332.9	42.33	8.864		
8,200.0	8,163.8	8,177.8	8,129.1	22.0	21.2	-78.93	-666.6	39.7	377.4	334.6	42.80	8.818		
8,250.0	8,212.2	8,221.4	8,167.4	22.2	21.5	-77.21	-687.4	39.6	380.0	336.7	43.30	8.776		
8,300.0	8,259.5	8,264.6	8,204.0	22.5	21.9	-75.56	-710.3	39.4	382.7	338.9	43.81	8.737		
8,350.0	8,305.5	8,307.2	8,238.8	22.8	22.2	-73.99	-735.0	39.3	385.7	341.4	44.32	8.702		
8,400.0	8,350.2	8,350.0	8,272.1	23.1	22.6	-72.50	-761.8	39.1	388.8	343.9	44.84	8.669		
8,450.0	8,393.1	8,391.1	8,302.6	23.4	23.0	-71.13	-789.4	39.0	391.9	346.6	45.36	8.640		
8,500.0	8,434.1	8,432.5	8,331.7	23.8	23.4	-69.85	-818.9	38.8	395.1	349.2	45.88	8.612		
8,550.0	8,473.1	8,473.6	8,358.7	24.2	23.9	-68.65	-849.8	38.6	398.2	351.9	46.39	8.585		
8,600.0	8,509.7	8,514.4	8,383.8	24.7	24.3	-67.56	-881.9	38.4	401.3	354.4	46.89	8.558		
8,650.0	8,543.9	8,554.8	8,406.8	25.2	24.8	-66.56	-915.2	38.2	404.3	356.8	47.40	8.528		
8,700.0	8,575.5	8,595.1	8,427.8	25.7	25.3	-65.66	-949.5	38.0	407.0	359.1	47.92	8.494		
8,750.0	8,604.3	8,635.1	8,446.8	26.2	25.8	-64.87	-984.7	37.8	409.6	361.2	48.45	8.453		
8,800.0	8,630.2	8,674.9	8,463.7	26.8	26.4	-64.17	-1,020.8	37.6	412.0	362.9	49.01	8.405		
8,850.0	8,653.0	8,714.6	8,478.5	27.4	26.9	-63.56	-1,057.6	37.4	414.0	364.4	49.60	8.348		
8,900.0	8,672.7	8,750.0	8,489.9	28.1	27.4	-63.10	-1,091.1	37.2	415.9	365.7	50.18	8.286		
8,950.0	8,689.1	8,793.5	8,501.7	28.8	28.0	-62.66	-1,133.0	36.9	417.3	366.4	50.91	8.197		
9,000.0	8,702.2	8,832.9	8,510.2	29.5	28.6	-62.35	-1,171.4	36.7	418.5	366.8	51.65	8.102		
9,050.0	8,711.9	8,872.1	8,516.5	30.2	29.2	-62.14	-1,210.1	36.5	419.3	366.8	52.46	7.993		
9,100.0	8,718.1	8,911.3	8,520.7	30.9	29.8	-62.02	-1,249.1	36.3	419.8	366.4	53.34	7.870		
9,150.0	8,720.9	8,950.0	8,522.8	31.6	30.4	-62.00	-1,287.7	36.0	419.9	365.6	54.29	7.734		
9,168.3	8,721.0	8,964.9	8,523.0	31.9	30.7	-62.02	-1,302.6	35.9	419.8	365.2	54.67	7.680		
9,168.4	8,721.0	8,965.0	8,523.0	31.9	30.7	-62.02	-1,302.7	35.9	419.8	365.2	54.67	7.679		
9,169.3	8,721.0	8,965.7	8,523.0	31.9	30.7	-62.02	-1,303.4	35.9	419.8	365.1	54.70	7.676		
9,175.0	8,721.0	8,970.2	8,523.0	32.0	30.7	-62.02	-1,307.9	35.9	419.8	365.0	54.84	7.656		

CC - Min centre to center distance or convergent point, SF - min separation factor, ES - min ellipse separation

Company:	Clear Creek Resource Partners	Local Co-ordinate Reference:	Well True Ranch Fee 501-2703H
Project:	SEC.27-T12N-R65W	TVD Reference:	WELL @ 5941.0ft (Original Well Elev)
Reference Site:	True Ranch Fee 2703H East Pad Sec.27-T12N-R65W	MD Reference:	WELL @ 5941.0ft (Original Well Elev)
Site Error:	0.0 ft	North Reference:	True
Reference Well:	True Ranch Fee 501-2703H	Survey Calculation Method:	Minimum Curvature
Well Error:	0.0 ft	Output errors are at	2.00 sigma
Reference Wellbore	Wellbore #1	Database:	US_EDM
Reference Design:	Plan #3 (8-28-19)	Offset TVD Reference:	Offset Datum

Offset Design				True Ranch Fee 2703H East Pad Sec.27-T12N-R65W - True Ranch Fee 201-2703H - Wellbore #1 - Pla									Offset Site Error:		0.0 ft
Survey Program: 0-MWD													Offset Well Error:		0.0 ft
Reference		Offset		Semi Major Axis			Distance							Warning	
Measured Depth	Vertical Depth	Measured Depth	Vertical Depth	Reference	Offset	Highside Toolface	Offset Wellbore Centre		Between Centres	Between Ellipses	Minimum Separation	Separation Factor			
(ft)	(ft)	(ft)	(ft)	(ft)	(ft)	(°)	+N/-S (ft)	+E/-W (ft)	(ft)	(ft)	(ft)				
9,200.0	8,720.8	8,994.5	8,522.9	32.4	31.1	-62.02	-1,332.2	35.8	419.9	364.4	55.50	7.565			
9,300.0	8,720.3	9,094.5	8,522.3	33.9	32.7	-62.02	-1,432.2	35.2	420.0	361.7	58.32	7.202			
9,400.0	8,719.8	9,194.5	8,521.7	35.5	34.3	-62.02	-1,532.2	34.6	420.1	358.9	61.21	6.864			
9,500.0	8,719.3	9,294.5	8,521.1	37.1	36.0	-62.01	-1,632.2	34.0	420.3	356.1	64.15	6.551			
9,600.0	8,718.8	9,394.5	8,520.5	38.8	37.7	-62.01	-1,732.2	33.4	420.4	353.3	67.15	6.261			
9,700.0	8,718.3	9,494.5	8,519.9	40.4	39.4	-62.01	-1,832.2	32.8	420.6	350.4	70.19	5.992			
9,800.0	8,717.8	9,594.5	8,519.3	42.1	41.1	-62.01	-1,932.2	32.2	420.7	347.4	73.27	5.742			
9,900.0	8,717.2	9,694.5	8,518.7	43.8	42.8	-62.00	-2,032.2	31.6	420.8	344.5	76.38	5.510			
10,000.0	8,716.7	9,794.5	8,518.1	45.5	44.6	-62.00	-2,132.2	31.0	421.0	341.5	79.52	5.294			
10,100.0	8,716.2	9,894.5	8,517.5	47.3	46.4	-62.00	-2,232.1	30.4	421.1	338.4	82.69	5.093			
10,200.0	8,715.7	9,994.5	8,516.9	49.0	48.1	-62.00	-2,332.1	29.8	421.3	335.4	85.88	4.905			
10,300.0	8,715.2	10,094.5	8,516.3	50.8	49.9	-61.99	-2,432.1	29.2	421.4	332.3	89.09	4.730			
10,400.0	8,714.7	10,194.5	8,515.7	52.6	51.7	-61.99	-2,532.1	28.6	421.5	329.2	92.33	4.566			
10,500.0	8,714.2	10,294.5	8,515.1	54.4	53.6	-61.99	-2,632.1	28.0	421.7	326.1	95.57	4.412			
10,600.0	8,713.6	10,394.5	8,514.5	56.2	55.4	-61.99	-2,732.1	27.4	421.8	323.0	98.84	4.268			
10,700.0	8,713.1	10,494.5	8,513.9	58.0	57.2	-61.98	-2,832.1	26.8	421.9	319.8	102.12	4.132			
10,800.0	8,712.6	10,594.5	8,513.3	59.8	59.0	-61.98	-2,932.1	26.2	422.1	316.7	105.40	4.004			
10,900.0	8,712.1	10,694.5	8,512.7	61.6	60.9	-61.98	-3,032.1	25.6	422.2	313.5	108.71	3.884			
11,000.0	8,711.6	10,794.5	8,512.1	63.4	62.7	-61.97	-3,132.1	25.0	422.4	310.3	112.02	3.771			
11,100.0	8,711.1	10,894.5	8,511.6	65.3	64.6	-61.97	-3,232.1	24.4	422.5	307.2	115.34	3.663			
11,200.0	8,710.6	10,994.5	8,511.0	67.1	66.4	-61.97	-3,332.1	23.8	422.6	304.0	118.67	3.562			
11,300.0	8,710.1	11,094.5	8,510.4	68.9	68.3	-61.97	-3,432.1	23.2	422.8	300.8	122.00	3.465			
11,400.0	8,709.5	11,194.5	8,509.8	70.8	70.1	-61.96	-3,532.1	22.6	422.9	297.6	125.35	3.374			
11,500.0	8,709.0	11,294.5	8,509.2	72.6	72.0	-61.96	-3,632.1	22.0	423.1	294.4	128.70	3.287			
11,600.0	8,708.5	11,394.5	8,508.6	74.5	73.9	-61.96	-3,732.1	21.4	423.2	291.1	132.05	3.205			
11,700.0	8,708.0	11,494.5	8,508.0	76.4	75.7	-61.96	-3,832.1	20.8	423.3	287.9	135.42	3.126			
11,800.0	8,707.5	11,594.5	8,507.4	78.2	77.6	-61.95	-3,932.1	20.2	423.5	284.7	138.78	3.051			
11,900.0	8,707.0	11,694.5	8,506.8	80.1	79.5	-61.95	-4,032.1	19.6	423.6	281.5	142.16	2.980			
12,000.0	8,706.5	11,794.5	8,506.2	82.0	81.4	-61.95	-4,132.1	19.0	423.7	278.2	145.53	2.912			
12,100.0	8,705.9	11,894.5	8,505.6	83.8	83.3	-61.95	-4,232.1	18.4	423.9	275.0	148.91	2.847			
12,200.0	8,705.4	11,994.5	8,505.0	85.7	85.1	-61.94	-4,332.1	17.8	424.0	271.7	152.30	2.784			
12,300.0	8,704.9	12,094.5	8,504.4	87.6	87.0	-61.94	-4,432.1	17.2	424.2	268.5	155.69	2.724			
12,400.0	8,704.4	12,194.5	8,503.8	89.5	88.9	-61.94	-4,532.1	16.6	424.3	265.2	159.08	2.667			
12,500.0	8,703.9	12,294.5	8,503.2	91.3	90.8	-61.94	-4,632.1	16.0	424.4	262.0	162.47	2.612			
12,600.0	8,703.4	12,394.5	8,502.6	93.2	92.7	-61.93	-4,732.1	15.4	424.6	258.7	165.87	2.560			
12,700.0	8,702.9	12,494.5	8,502.0	95.1	94.6	-61.93	-4,832.1	14.8	424.7	255.4	169.27	2.509			
12,800.0	8,702.3	12,594.5	8,501.4	97.0	96.5	-61.93	-4,932.0	14.2	424.9	252.2	172.68	2.460			
12,900.0	8,701.8	12,694.5	8,500.8	98.9	98.4	-61.93	-5,032.0	13.6	425.0	248.9	176.08	2.414			
13,000.0	8,701.3	12,794.5	8,500.2	100.8	100.3	-61.92	-5,132.0	13.0	425.1	245.6	179.49	2.369			
13,100.0	8,700.8	12,894.5	8,499.6	102.7	102.2	-61.92	-5,232.0	12.4	425.3	242.4	182.90	2.325			
13,200.0	8,700.3	12,994.5	8,499.0	104.5	104.1	-61.92	-5,332.0	11.8	425.4	239.1	186.31	2.283			
13,300.0	8,699.8	13,094.5	8,498.4	106.4	106.0	-61.92	-5,432.0	11.2	425.5	235.8	189.73	2.243			
13,400.0	8,699.3	13,194.5	8,497.9	108.3	107.9	-61.91	-5,532.0	10.6	425.7	232.5	193.14	2.204			
13,500.0	8,698.8	13,294.5	8,497.3	110.2	109.8	-61.91	-5,632.0	10.0	425.8	229.3	196.56	2.166			
13,600.0	8,698.2	13,394.5	8,496.7	112.1	111.7	-61.91	-5,732.0	9.4	426.0	226.0	199.98	2.130			
13,700.0	8,697.7	13,494.5	8,496.1	114.0	113.6	-61.90	-5,832.0	8.8	426.1	222.7	203.40	2.095			
13,800.0	8,697.2	13,594.5	8,495.5	115.9	115.5	-61.90	-5,932.0	8.2	426.2	219.4	206.83	2.061			
13,900.0	8,696.7	13,694.5	8,494.9	117.8	117.4	-61.90	-6,032.0	7.6	426.4	216.1	210.25	2.028			
14,000.0	8,696.2	13,794.5	8,494.3	119.7	119.3	-61.90	-6,132.0	7.0	426.5	212.8	213.68	1.996			
14,100.0	8,695.7	13,894.5	8,493.7	121.6	121.2	-61.89	-6,232.0	6.4	426.7	209.6	217.10	1.965			
14,200.0	8,695.2	13,994.5	8,493.1	123.5	123.1	-61.89	-6,332.0	5.8	426.8	206.3	220.53	1.935			

CC - Min centre to center distance or convergent point, SF - min separation factor, ES - min ellipse separation

Company:	Clear Creek Resource Partners	Local Co-ordinate Reference:	Well True Ranch Fee 501-2703H
Project:	SEC.27-T12N-R65W	TVD Reference:	WELL @ 5941.0ft (Original Well Elev)
Reference Site:	True Ranch Fee 2703H East Pad Sec.27-T12N-R65W	MD Reference:	WELL @ 5941.0ft (Original Well Elev)
Site Error:	0.0 ft	North Reference:	True
Reference Well:	True Ranch Fee 501-2703H	Survey Calculation Method:	Minimum Curvature
Well Error:	0.0 ft	Output errors are at	2.00 sigma
Reference Wellbore	Wellbore #1	Database:	US_EDM
Reference Design:	Plan #3 (8-28-19)	Offset TVD Reference:	Offset Datum

Offset Design		True Ranch Fee 2703H East Pad Sec.27-T12N-R65W - True Ranch Fee 201-2703H - Wellbore #1 - Pla										Offset Site Error:		0.0 ft
Survey Program: 0-MWD												Offset Well Error:		0.0 ft
Reference		Offset		Semi Major Axis			Distance							
Measured Depth	Vertical Depth	Measured Depth	Vertical Depth	Reference	Offset	Highside Toolface	Offset Wellbore Centre		Between Centres	Between Ellipses	Minimum Separation	Separation Factor	Warning	
(ft)	(ft)	(ft)	(ft)	(ft)	(ft)	(°)	+N/-S (ft)	+E/-W (ft)	(ft)	(ft)	(ft)			
14,300.0	8,694.6	14,094.5	8,492.5	125.4	125.0	-61.89	-6,432.0	5.2	426.9	203.0	223.96	1.906		
14,400.0	8,694.1	14,194.5	8,491.9	127.3	126.9	-61.89	-6,532.0	4.6	427.1	199.7	227.39	1.878		
14,500.0	8,693.6	14,294.5	8,491.3	129.2	128.8	-61.88	-6,632.0	4.0	427.2	196.4	230.82	1.851		
14,600.0	8,693.1	14,394.5	8,490.7	131.1	130.8	-61.88	-6,732.0	3.5	427.3	193.1	234.25	1.824		
14,700.0	8,692.6	14,494.5	8,490.1	133.0	132.7	-61.88	-6,832.0	2.9	427.5	189.8	237.68	1.799		
14,800.0	8,692.1	14,594.5	8,489.5	134.9	134.6	-61.88	-6,932.0	2.3	427.6	186.5	241.12	1.774		
14,900.0	8,691.6	14,694.5	8,488.9	136.9	136.5	-61.87	-7,032.0	1.7	427.8	183.2	244.55	1.749		
15,000.0	8,691.0	14,794.5	8,488.3	138.8	138.4	-61.87	-7,132.0	1.1	427.9	179.9	247.99	1.726		
15,100.0	8,690.5	14,894.5	8,487.7	140.7	140.3	-61.87	-7,232.0	0.5	428.0	176.6	251.42	1.702		
15,200.0	8,690.0	14,994.5	8,487.1	142.6	142.2	-61.87	-7,332.0	-0.1	428.2	173.3	254.86	1.680		
15,300.0	8,689.5	15,094.5	8,486.5	144.5	144.1	-61.86	-7,432.0	-0.7	428.3	170.0	258.29	1.658		
15,400.0	8,689.0	15,194.5	8,485.9	146.4	146.0	-61.86	-7,532.0	-1.3	428.5	166.7	261.73	1.637		
15,500.0	8,688.5	15,294.5	8,485.3	148.3	148.0	-61.86	-7,631.9	-1.9	428.6	163.4	265.17	1.616		
15,600.0	8,688.0	15,394.5	8,484.7	150.2	149.9	-61.86	-7,731.9	-2.5	428.7	160.1	268.61	1.596		
15,700.0	8,687.5	15,494.5	8,484.2	152.1	151.8	-61.85	-7,831.9	-3.1	428.9	156.8	272.05	1.576		
15,800.0	8,686.9	15,594.5	8,483.6	154.0	153.7	-61.85	-7,931.9	-3.7	429.0	153.5	275.49	1.557		
15,900.0	8,686.4	15,694.5	8,483.0	156.0	155.6	-61.85	-8,031.9	-4.3	429.2	150.2	278.93	1.539		
16,000.0	8,685.9	15,794.5	8,482.4	157.9	157.5	-61.85	-8,131.9	-4.9	429.3	146.9	282.37	1.520		
16,100.0	8,685.4	15,894.5	8,481.8	159.8	159.5	-61.84	-8,231.9	-5.5	429.4	143.6	285.81	1.502		
16,200.0	8,684.9	15,994.5	8,481.2	161.7	161.4	-61.84	-8,331.9	-6.1	429.6	140.3	289.25	1.485	Level 3	
16,300.0	8,684.4	16,094.5	8,480.6	163.6	163.3	-61.84	-8,431.9	-6.7	429.7	137.0	292.70	1.468	Level 3	
16,400.0	8,683.9	16,194.5	8,480.0	165.5	165.2	-61.84	-8,531.9	-7.3	429.8	133.7	296.14	1.451	Level 3	
16,500.0	8,683.3	16,294.5	8,479.4	167.4	167.1	-61.83	-8,631.9	-7.9	430.0	130.4	299.58	1.435	Level 3	
16,600.0	8,682.8	16,394.5	8,478.8	169.3	169.0	-61.83	-8,731.9	-8.5	430.1	127.1	303.03	1.419	Level 3	
16,700.0	8,682.3	16,494.5	8,478.2	171.3	171.0	-61.83	-8,831.9	-9.1	430.3	123.8	306.47	1.404	Level 3	
16,800.0	8,681.8	16,594.5	8,477.6	173.2	172.9	-61.83	-8,931.9	-9.7	430.4	120.5	309.91	1.389	Level 3	
16,900.0	8,681.3	16,694.5	8,477.0	175.1	174.8	-61.82	-9,031.9	-10.3	430.5	117.2	313.36	1.374	Level 3	
17,000.0	8,680.8	16,794.5	8,476.4	177.0	176.7	-61.82	-9,131.9	-10.9	430.7	113.9	316.80	1.359	Level 3	
17,100.0	8,680.3	16,894.5	8,475.8	178.9	178.6	-61.82	-9,231.9	-11.5	430.8	110.6	320.25	1.345	Level 3	
17,200.0	8,679.8	16,994.5	8,475.2	180.8	180.5	-61.82	-9,331.9	-12.1	431.0	107.3	323.69	1.331	Level 3	
17,300.0	8,679.2	17,094.5	8,474.6	182.8	182.5	-61.81	-9,431.9	-12.7	431.1	104.0	327.14	1.318	Level 3	
17,400.0	8,678.7	17,194.5	8,474.0	184.7	184.4	-61.81	-9,531.9	-13.3	431.2	100.6	330.59	1.304	Level 3	
17,500.0	8,678.2	17,294.5	8,473.4	186.6	186.3	-61.81	-9,631.9	-13.9	431.4	97.3	334.03	1.291	Level 3	
17,600.0	8,677.7	17,394.5	8,472.8	188.5	188.2	-61.81	-9,731.9	-14.5	431.5	94.0	337.48	1.279	Level 3	
17,700.0	8,677.2	17,494.5	8,472.2	190.4	190.1	-61.80	-9,831.9	-15.1	431.6	90.7	340.92	1.266	Level 3	
17,800.0	8,676.7	17,594.5	8,471.6	192.3	192.1	-61.80	-9,931.9	-15.7	431.8	87.4	344.37	1.254	Level 3	
17,900.0	8,676.2	17,694.5	8,471.0	194.3	194.0	-61.80	-10,031.9	-16.3	431.9	84.1	347.82	1.242	Level 2	
18,000.0	8,675.6	17,794.5	8,470.5	196.2	195.9	-61.80	-10,131.9	-16.9	432.1	80.8	351.27	1.230	Level 2	
18,100.0	8,675.1	17,894.5	8,469.9	198.1	197.8	-61.79	-10,231.9	-17.5	432.2	77.5	354.71	1.218	Level 2	
18,200.0	8,674.6	17,994.5	8,469.3	200.0	199.7	-61.79	-10,331.9	-18.1	432.3	74.2	358.16	1.207	Level 2	
18,300.0	8,674.1	18,094.5	8,468.7	201.9	201.7	-61.79	-10,431.8	-18.7	432.5	70.9	361.61	1.196	Level 2	
18,400.0	8,673.6	18,194.5	8,468.1	203.8	203.6	-61.79	-10,531.8	-19.3	432.6	67.6	365.06	1.185	Level 2	
18,500.0	8,673.1	18,294.5	8,467.5	205.8	205.5	-61.78	-10,631.8	-19.9	432.8	64.3	368.50	1.174	Level 2	
18,600.0	8,672.6	18,394.5	8,466.9	207.7	207.4	-61.78	-10,731.8	-20.5	432.9	60.9	371.95	1.164	Level 2	
18,700.0	8,672.0	18,494.5	8,466.3	209.6	209.3	-61.78	-10,831.8	-21.1	433.0	57.6	375.40	1.154	Level 2	
18,800.0	8,671.5	18,594.5	8,465.7	211.5	211.3	-61.78	-10,931.8	-21.7	433.2	54.3	378.85	1.143	Level 2	
18,903.8	8,671.0	18,698.3	8,465.1	213.5	213.3	-61.77	-11,035.7	-22.3	433.3	50.9	382.43	1.133	Level 2	
18,904.3	8,671.0	18,698.7	8,465.1	213.5	213.3	-61.77	-11,036.1	-22.3	433.3	50.9	382.44	1.133	Level 2, ES, SF	

Company:	Clear Creek Resource Partners	Local Co-ordinate Reference:	Well True Ranch Fee 501-2703H
Project:	SEC.27-T12N-R65W	TVD Reference:	WELL @ 5941.0ft (Original Well Elev)
Reference Site:	True Ranch Fee 2703H East Pad Sec.27-T12N-R65W	MD Reference:	WELL @ 5941.0ft (Original Well Elev)
Site Error:	0.0 ft	North Reference:	True
Reference Well:	True Ranch Fee 501-2703H	Survey Calculation Method:	Minimum Curvature
Well Error:	0.0 ft	Output errors are at	2.00 sigma
Reference Wellbore	Wellbore #1	Database:	US_EDM
Reference Design:	Plan #3 (8-28-19)	Offset TVD Reference:	Offset Datum

Offset Design												Offset Site Error:	0.0 ft
Survey Program: 0-MWD												Offset Well Error:	0.0 ft
Reference		Offset		Semi Major Axis			Distance						Warning
Measured Depth (ft)	Vertical Depth (ft)	Measured Depth (ft)	Vertical Depth (ft)	Reference (ft)	Offset (ft)	Highside Toolface (°)	Offset Wellbore Centre +N/-S (ft)	+E/-W (ft)	Between Centres (ft)	Between Ellipses (ft)	Minimum Separation (ft)	Separation Factor	
0.0	0.0	0.0	0.0	0.0	0.0	90.70	-0.4	29.8	29.8				
100.0	100.0	100.0	100.0	0.1	0.1	90.70	-0.4	29.8	29.8	29.6	0.22	132.697	
200.0	200.0	200.0	200.0	0.3	0.3	90.70	-0.4	29.8	29.8	29.2	0.67	44.232	
300.0	300.0	300.0	300.0	0.6	0.6	90.70	-0.4	29.8	29.8	28.7	1.12	26.539	
400.0	400.0	400.0	400.0	0.8	0.8	90.70	-0.4	29.8	29.8	28.3	1.57	18.957	
500.0	500.0	500.0	500.0	1.0	1.0	-121.08	-0.4	29.8	30.5	28.5	2.00	15.245	
600.0	599.9	599.9	599.9	1.2	1.2	-126.95	-0.4	29.8	32.7	30.3	2.42	13.509	
700.0	699.7	700.6	700.6	1.4	1.4	-134.30	-1.2	28.8	35.8	32.9	2.84	12.609	
806.4	805.6	807.8	807.7	1.6	1.6	-142.20	-3.8	25.4	39.1	35.8	3.28	11.895	
900.0	898.7	902.2	901.9	1.9	1.8	-148.48	-7.7	20.4	41.2	37.5	3.68	11.182	
1,000.0	998.1	1,003.2	1,002.5	2.2	2.1	-154.26	-13.4	13.0	41.3	37.2	4.11	10.047	
1,100.0	1,097.6	1,104.2	1,102.7	2.4	2.3	-160.10	-20.7	3.6	39.2	34.7	4.55	8.624	
1,200.0	1,197.0	1,205.0	1,202.5	2.7	2.6	-167.19	-29.7	-8.0	35.0	30.0	4.99	7.008	
1,300.0	1,296.4	1,305.3	1,301.3	3.0	3.0	-177.60	-40.1	-21.4	29.0	23.5	5.46	5.310	
1,400.0	1,395.9	1,404.9	1,399.3	3.3	3.3	166.52	-50.9	-35.3	23.8	17.8	6.04	3.947	
1,500.0	1,495.3	1,504.5	1,497.3	3.6	3.7	144.71	-61.7	-49.3	21.3	14.5	6.86	3.108	
1,521.5	1,516.7	1,525.9	1,518.4	3.7	3.7	139.57	-64.0	-52.3	21.2	14.2	7.07	3.005 CC, ES	
1,600.0	1,594.7	1,604.1	1,595.4	3.9	4.0	121.39	-72.5	-63.2	22.4	14.6	7.80	2.865	
1,700.0	1,694.2	1,703.7	1,693.4	4.2	4.4	102.81	-83.3	-77.1	26.5	18.0	8.58	3.093	
1,800.0	1,793.6	1,803.3	1,791.4	4.5	4.8	90.20	-94.1	-91.0	32.7	23.5	9.20	3.553	
1,900.0	1,893.1	1,902.9	1,889.5	4.8	5.2	81.83	-104.9	-104.9	39.9	30.1	9.75	4.092	
2,000.0	1,992.5	2,002.5	1,987.5	5.1	5.6	76.11	-115.6	-118.9	47.7	37.4	10.28	4.639	
2,100.0	2,091.9	2,102.1	2,085.5	5.4	6.0	72.01	-126.4	-132.8	55.8	45.0	10.81	5.163	
2,200.0	2,191.4	2,201.7	2,183.5	5.7	6.4	68.97	-137.2	-146.7	64.1	52.8	11.34	5.654	
2,300.0	2,290.8	2,301.3	2,281.6	6.0	6.8	66.63	-148.0	-160.6	72.6	60.7	11.89	6.110	
2,400.0	2,390.2	2,400.9	2,379.6	6.3	7.2	64.78	-158.8	-174.5	81.2	68.8	12.43	6.532	
2,500.0	2,489.7	2,500.5	2,477.6	6.6	7.6	63.29	-169.6	-188.5	89.8	76.9	12.98	6.921	
2,600.0	2,589.1	2,600.1	2,575.7	6.9	8.0	62.06	-180.4	-202.4	98.5	85.0	13.53	7.280	
2,700.0	2,688.5	2,699.7	2,673.7	7.2	8.4	61.03	-191.2	-216.3	107.3	93.2	14.09	7.612	
2,800.0	2,788.0	2,799.3	2,771.7	7.5	8.8	60.15	-202.0	-230.2	116.0	101.4	14.65	7.920	
2,900.0	2,887.4	2,898.9	2,869.8	7.8	9.2	59.40	-212.8	-244.1	124.8	109.6	15.21	8.205	
3,000.0	2,986.8	2,998.5	2,967.8	8.2	9.6	58.75	-223.6	-258.1	133.6	117.8	15.77	8.471	
3,100.0	3,086.3	3,098.1	3,065.8	8.5	10.0	58.17	-234.4	-272.0	142.4	126.1	16.34	8.718	
3,200.0	3,185.7	3,197.7	3,163.9	8.8	10.4	57.67	-245.2	-285.9	151.2	134.3	16.90	8.948	
3,300.0	3,285.1	3,297.3	3,261.9	9.1	10.8	57.22	-256.0	-299.8	160.1	142.6	17.47	9.164	
3,400.0	3,384.6	3,396.9	3,359.9	9.4	11.2	56.82	-266.8	-313.7	168.9	150.9	18.04	9.366	
3,500.0	3,484.0	3,496.5	3,458.0	9.7	11.6	56.45	-277.5	-327.7	177.8	159.2	18.60	9.556	
3,600.0	3,583.4	3,596.1	3,556.0	10.0	12.0	56.12	-288.3	-341.6	186.6	167.5	19.17	9.734	
3,700.0	3,682.9	3,695.7	3,654.0	10.3	12.5	55.83	-299.1	-355.5	195.5	175.8	19.74	9.902	
3,800.0	3,782.3	3,795.3	3,752.1	10.6	12.9	55.55	-309.9	-369.4	204.4	184.1	20.31	10.061	
3,900.0	3,881.7	3,894.9	3,850.1	10.9	13.3	55.30	-320.7	-383.3	213.2	192.4	20.88	10.211	
4,000.0	3,981.2	3,994.5	3,948.1	11.2	13.7	55.07	-331.5	-397.3	222.1	200.7	21.46	10.352	
4,100.0	4,080.6	4,094.1	4,046.1	11.5	14.1	54.86	-342.3	-411.2	231.0	209.0	22.03	10.487	
4,200.0	4,180.0	4,193.7	4,144.2	11.8	14.5	54.66	-353.1	-425.1	239.9	217.3	22.60	10.614	
4,300.0	4,279.5	4,293.3	4,242.2	12.1	14.9	54.48	-363.9	-439.0	248.8	225.6	23.17	10.735	
4,400.0	4,378.9	4,392.9	4,340.2	12.4	15.3	54.31	-374.7	-452.9	257.7	233.9	23.75	10.851	
4,500.0	4,478.4	4,492.5	4,438.3	12.7	15.7	54.15	-385.5	-466.9	266.6	242.2	24.32	10.960	
4,600.0	4,577.8	4,592.1	4,536.3	13.1	16.1	54.00	-396.3	-480.8	275.5	250.6	24.89	11.065	
4,700.0	4,677.2	4,691.7	4,634.3	13.4	16.6	53.86	-407.1	-494.7	284.3	258.9	25.47	11.165	
4,800.0	4,776.7	4,791.3	4,732.4	13.7	17.0	53.73	-417.9	-508.6	293.2	267.2	26.04	11.260	
4,900.0	4,876.1	4,890.9	4,830.4	14.0	17.4	53.61	-428.7	-522.5	302.1	275.5	26.62	11.352	

CC - Min centre to center distance or convergent point, SF - min separation factor, ES - min ellipse separation

Company:	Clear Creek Resource Partners	Local Co-ordinate Reference:	Well True Ranch Fee 501-2703H
Project:	SEC.27-T12N-R65W	TVD Reference:	WELL @ 5941.0ft (Original Well Elev)
Reference Site:	True Ranch Fee 2703H East Pad Sec.27-T12N-R65W	MD Reference:	WELL @ 5941.0ft (Original Well Elev)
Site Error:	0.0 ft	North Reference:	True
Reference Well:	True Ranch Fee 501-2703H	Survey Calculation Method:	Minimum Curvature
Well Error:	0.0 ft	Output errors are at	2.00 sigma
Reference Wellbore	Wellbore #1	Database:	US_EDM
Reference Design:	Plan #3 (8-28-19)	Offset TVD Reference:	Offset Datum

Offset Design		True Ranch Fee 2703H East Pad Sec.27-T12N-R65W - True Ranch Fee 202-2703H - Wellbore #1 - Pla											Offset Site Error:		0.0 ft
Survey Program: 0-MWD													Offset Well Error:		0.0 ft
Reference		Offset		Semi Major Axis			Distance								
Measured Depth	Vertical	Measured	Vertical	Reference	Offset	Highside	Offset Wellbore Centre		Between	Between	Minimum	Separation	Warning		
Depth (ft)	Depth (ft)	Depth (ft)	Depth (ft)	(ft)	(ft)	(")	+N/-S (ft)	+E/-W (ft)	Centres (ft)	Ellipses (ft)	Separation (ft)	Factor			
5,000.0	4,975.5	4,990.5	4,928.4	14.3	17.8	53.50	-439.4	-536.5	311.0	283.8	27.19	11.439			
5,100.0	5,075.0	5,090.1	5,026.5	14.6	18.2	53.39	-450.2	-550.4	319.9	292.2	27.77	11.523			
5,200.0	5,174.4	5,189.7	5,124.5	14.9	18.6	53.28	-461.0	-564.3	328.8	300.5	28.34	11.603			
5,300.0	5,273.8	5,289.3	5,222.5	15.2	19.0	53.18	-471.8	-578.2	337.7	308.8	28.92	11.680			
5,400.0	5,373.3	5,388.9	5,320.6	15.5	19.4	53.09	-482.6	-592.2	346.6	317.2	29.49	11.754			
5,500.0	5,472.7	5,488.5	5,418.6	15.8	19.8	53.00	-493.4	-606.1	355.6	325.5	30.07	11.825			
5,600.0	5,572.1	5,588.1	5,516.6	16.1	20.2	52.92	-504.2	-620.0	364.5	333.8	30.64	11.894			
5,700.0	5,671.6	5,687.7	5,614.6	16.4	20.7	52.84	-515.0	-633.9	373.4	342.1	31.22	11.960			
5,800.0	5,771.0	5,787.3	5,712.7	16.7	21.1	52.76	-525.8	-647.8	382.3	350.5	31.80	12.023			
5,900.0	5,870.4	5,886.9	5,810.7	17.0	21.5	52.69	-536.6	-661.8	391.2	358.8	32.37	12.084			
6,000.0	5,969.9	5,986.5	5,908.7	17.3	21.9	52.62	-547.4	-675.7	400.1	367.1	32.95	12.143			
6,100.0	6,069.3	6,088.0	6,008.7	17.7	22.3	52.55	-558.4	-689.8	409.0	375.4	33.52	12.199			
6,200.0	6,168.7	6,202.0	6,121.3	18.0	22.6	52.68	-569.0	-703.5	415.7	381.6	34.08	12.197			
6,300.0	6,268.2	6,316.2	6,234.8	18.3	22.9	53.12	-576.8	-713.7	419.0	384.3	34.67	12.085			
6,400.0	6,367.6	6,430.4	6,348.7	18.6	23.1	53.87	-581.9	-720.2	418.9	383.6	35.30	11.869			
6,500.0	6,467.0	6,544.2	6,462.4	18.9	23.2	54.95	-584.2	-723.2	415.5	379.5	35.97	11.552			
6,600.0	6,566.5	6,648.3	6,566.5	19.2	23.4	56.20	-584.4	-723.4	409.7	373.0	36.65	11.178			
6,700.0	6,665.9	6,747.7	6,665.9	19.5	23.5	57.45	-584.4	-723.4	403.8	366.5	37.32	10.822			
6,730.1	6,695.8	6,777.6	6,695.8	19.6	23.5	57.83	-584.4	-723.4	402.1	364.6	37.52	10.718			
6,800.0	6,765.4	6,847.2	6,765.4	19.8	23.6	58.57	-584.4	-723.4	398.6	360.7	37.91	10.517			
6,900.0	6,865.2	6,947.0	6,865.2	19.9	23.7	59.30	-584.4	-723.4	395.3	357.0	38.33	10.313			
7,000.0	6,965.2	7,047.0	6,965.2	20.1	23.8	59.65	-584.4	-723.4	393.8	355.2	38.66	10.186			
7,034.8	7,000.0	7,081.8	7,000.0	20.1	23.9	-90.69	-584.4	-723.4	393.7	355.0	38.68	10.178			
7,100.0	7,065.2	7,147.0	7,065.2	20.2	24.0	-90.69	-584.4	-723.4	393.7	354.8	38.88	10.126			
7,200.0	7,165.2	7,247.0	7,165.2	20.4	24.1	-90.69	-584.4	-723.4	393.7	354.5	39.17	10.052			
7,300.0	7,265.2	7,347.0	7,265.2	20.5	24.2	-90.69	-584.4	-723.4	393.7	354.2	39.46	9.978			
7,400.0	7,365.2	7,447.0	7,365.2	20.6	24.3	-90.69	-584.4	-723.4	393.7	354.0	39.75	9.905			
7,500.0	7,465.2	7,547.0	7,465.2	20.8	24.5	-90.69	-584.4	-723.4	393.7	353.7	40.04	9.832			
7,600.0	7,565.2	7,647.0	7,565.2	20.9	24.6	-90.69	-584.4	-723.4	393.7	353.4	40.34	9.759			
7,700.0	7,665.2	7,747.0	7,665.2	21.1	24.7	-90.69	-584.4	-723.4	393.7	353.1	40.64	9.687			
7,800.0	7,765.2	7,847.0	7,765.2	21.2	24.9	-90.69	-584.4	-723.4	393.7	352.8	40.95	9.615			
7,900.0	7,865.2	7,945.5	7,863.4	21.4	25.0	-91.59	-590.5	-723.4	393.9	352.7	41.16	9.570			
8,000.0	7,965.2	8,040.5	7,956.6	21.5	25.3	-94.29	-609.1	-723.5	395.0	353.9	41.15	9.599			
8,039.6	8,004.8	8,076.6	7,991.1	21.6	25.5	-95.77	-619.4	-723.6	396.1	355.0	41.10	9.639			
8,050.0	8,015.2	8,085.9	7,999.9	21.6	25.5	83.38	-622.3	-723.6	396.5	355.3	41.16	9.634			
8,100.0	8,065.1	8,130.1	8,041.3	21.7	25.7	81.29	-637.8	-723.7	398.6	357.5	41.13	9.691			
8,150.0	8,114.7	8,173.6	8,081.0	21.8	25.9	79.27	-655.5	-723.8	401.2	360.0	41.18	9.742			
8,200.0	8,163.8	8,216.4	8,119.0	22.0	26.1	77.32	-675.3	-723.9	404.2	362.9	41.30	9.788			
8,250.0	8,212.2	8,258.7	8,155.3	22.2	26.4	75.45	-697.0	-724.1	407.5	366.1	41.47	9.827			
8,300.0	8,259.5	8,300.0	8,189.5	22.5	26.6	73.69	-720.2	-724.2	411.2	369.5	41.69	9.861			
8,350.0	8,305.5	8,341.5	8,222.4	22.8	26.9	71.99	-745.5	-724.3	415.0	373.0	41.97	9.888			
8,400.0	8,350.2	8,382.2	8,253.2	23.1	27.2	70.40	-772.1	-724.5	419.0	376.7	42.28	9.909			
8,450.0	8,393.1	8,422.4	8,282.1	23.4	27.5	68.92	-800.1	-724.7	423.0	380.4	42.63	9.922			
8,500.0	8,434.1	8,462.3	8,309.1	23.8	27.9	67.54	-829.3	-724.8	427.0	384.0	43.02	9.927			
8,550.0	8,473.1	8,500.0	8,333.2	24.2	28.2	66.30	-858.4	-725.0	431.0	387.6	43.44	9.923			
8,600.0	8,509.7	8,541.1	8,357.6	24.7	28.6	65.09	-891.4	-725.2	434.9	391.0	43.91	9.903			
8,650.0	8,543.9	8,580.0	8,379.0	25.2	28.9	64.03	-923.9	-725.4	438.6	394.1	44.44	9.869			
8,700.0	8,575.5	8,618.7	8,398.4	25.7	29.3	63.07	-957.4	-725.6	442.1	397.0	45.03	9.817			
8,750.0	8,604.3	8,657.2	8,415.9	26.2	29.8	62.22	-991.6	-725.8	445.3	399.6	45.69	9.746			
8,800.0	8,630.2	8,700.0	8,433.2	26.8	30.2	61.41	-1,030.8	-726.1	448.2	401.7	46.46	9.648			
8,850.0	8,653.0	8,733.6	8,445.2	27.4	30.6	60.82	-1,062.2	-726.2	450.8	403.5	47.28	9.534			

Company:	Clear Creek Resource Partners	Local Co-ordinate Reference:	Well True Ranch Fee 501-2703H
Project:	SEC.27-T12N-R65W	TVD Reference:	WELL @ 5941.0ft (Original Well Elev)
Reference Site:	True Ranch Fee 2703H East Pad Sec.27-T12N-R65W	MD Reference:	WELL @ 5941.0ft (Original Well Elev)
Site Error:	0.0 ft	North Reference:	True
Reference Well:	True Ranch Fee 501-2703H	Survey Calculation Method:	Minimum Curvature
Well Error:	0.0 ft	Output errors are at	2.00 sigma
Reference Wellbore	Wellbore #1	Database:	US_EDM
Reference Design:	Plan #3 (8-28-19)	Offset TVD Reference:	Offset Datum

Offset Design		True Ranch Fee 2703H East Pad Sec.27-T12N-R65W - True Ranch Fee 202-2703H - Wellbore #1 - Pla											Offset Site Error:		0.0 ft
Survey Program: 0-MWD													Offset Well Error:		0.0 ft
Reference		Offset		Semi Major Axis			Distance								
Measured Depth	Vertical	Measured	Vertical	Reference	Offset	Highside	Offset Wellbore Centre		Between	Between	Minimum	Separation	Warning		
Depth (ft)	Depth (ft)	Depth (ft)	Depth (ft)	(ft)	(ft)	(°)	+N/-S (ft)	+E/-W (ft)	Centres (ft)	Ellipses (ft)	Separation (ft)	Factor			
8,900.0	8,672.7	8,771.6	8,456.8	28.1	31.1	60.28	-1,098.3	-726.5	453.0	404.7	48.23	9.392			
8,950.0	8,689.1	8,809.4	8,466.6	28.8	31.5	59.85	-1,134.9	-726.7	454.8	405.5	49.29	9.227			
9,000.0	8,702.2	8,850.0	8,474.8	29.5	32.1	59.49	-1,174.6	-726.9	456.2	405.7	50.49	9.035			
9,050.0	8,711.9	8,884.9	8,480.1	30.2	32.5	59.27	-1,209.1	-727.1	457.2	405.4	51.77	8.832			
9,100.0	8,718.1	8,922.6	8,484.0	30.9	33.0	59.14	-1,246.6	-727.3	457.7	404.6	53.18	8.607			
9,150.0	8,720.9	8,960.2	8,485.8	31.6	33.5	59.10	-1,284.2	-727.6	457.9	403.1	54.71	8.369			
9,168.3	8,721.0	8,977.1	8,486.0	31.9	33.8	59.12	-1,301.1	-727.7	457.8	402.5	55.34	8.272			
9,168.4	8,721.0	8,977.1	8,486.0	31.9	33.8	59.12	-1,301.1	-727.7	457.8	402.5	55.34	8.272			
9,169.3	8,721.0	8,977.1	8,486.0	31.9	33.8	59.12	-1,301.1	-727.7	457.8	402.4	55.36	8.270			
9,200.0	8,720.8	9,004.7	8,486.0	32.4	34.1	59.13	-1,328.6	-727.8	457.7	401.5	56.13	8.154			
9,300.0	8,720.3	9,104.7	8,485.9	33.9	35.5	59.17	-1,428.6	-728.4	457.3	398.5	58.89	7.767			
9,400.0	8,719.8	9,204.7	8,485.8	35.5	37.0	59.21	-1,528.6	-729.0	457.0	395.3	61.71	7.406			
9,500.0	8,719.3	9,304.7	8,485.8	37.1	38.5	59.25	-1,628.6	-729.6	456.7	392.1	64.60	7.070			
9,600.0	8,718.8	9,404.7	8,485.7	38.8	40.0	59.29	-1,728.6	-730.2	456.4	388.8	67.53	6.758			
9,700.0	8,718.3	9,504.7	8,485.6	40.4	41.6	59.33	-1,828.6	-730.8	456.0	385.5	70.51	6.468			
9,800.0	8,717.8	9,604.7	8,485.5	42.1	43.2	59.37	-1,928.6	-731.4	455.7	382.2	73.53	6.197			
9,900.0	8,717.2	9,704.7	8,485.5	43.8	44.9	59.41	-2,028.6	-732.0	455.4	378.8	76.59	5.946			
10,000.0	8,716.7	9,804.7	8,485.4	45.5	46.5	59.45	-2,128.6	-732.6	455.1	375.4	79.68	5.711			
10,100.0	8,716.2	9,904.7	8,485.3	47.3	48.2	59.49	-2,228.6	-733.2	454.7	371.9	82.80	5.492			
10,200.0	8,715.7	10,004.7	8,485.3	49.0	49.9	59.53	-2,328.6	-733.8	454.4	368.5	85.94	5.287			
10,300.0	8,715.2	10,104.7	8,485.2	50.8	51.6	59.57	-2,428.6	-734.4	454.1	365.0	89.11	5.096			
10,400.0	8,714.7	10,204.7	8,485.1	52.6	53.3	59.61	-2,528.6	-735.0	453.8	361.5	92.30	4.916			
10,500.0	8,714.2	10,304.7	8,485.0	54.4	55.0	59.65	-2,628.6	-735.6	453.4	357.9	95.51	4.748			
10,600.0	8,713.6	10,404.7	8,485.0	56.2	56.8	59.69	-2,728.6	-736.2	453.1	354.4	98.73	4.589			
10,700.0	8,713.1	10,504.7	8,484.9	58.0	58.5	59.73	-2,828.6	-736.8	452.8	350.8	101.97	4.440			
10,800.0	8,712.6	10,604.7	8,484.8	59.8	60.3	59.77	-2,928.6	-737.4	452.5	347.2	105.23	4.300			
10,900.0	8,712.1	10,704.7	8,484.8	61.6	62.1	59.81	-3,028.6	-737.9	452.1	343.6	108.50	4.167			
11,000.0	8,711.6	10,804.7	8,484.7	63.4	63.9	59.85	-3,128.6	-738.5	451.8	340.0	111.78	4.042			
11,100.0	8,711.1	10,904.7	8,484.6	65.3	65.7	59.90	-3,228.6	-739.1	451.5	336.4	115.08	3.923			
11,200.0	8,710.6	11,004.7	8,484.5	67.1	67.5	59.94	-3,328.6	-739.7	451.2	332.8	118.38	3.811			
11,300.0	8,710.1	11,104.7	8,484.5	68.9	69.3	59.98	-3,428.6	-740.3	450.9	329.2	121.70	3.705			
11,400.0	8,709.5	11,204.7	8,484.4	70.8	71.1	60.02	-3,528.6	-740.9	450.5	325.5	125.03	3.603			
11,500.0	8,709.0	11,304.7	8,484.3	72.6	72.9	60.06	-3,628.6	-741.5	450.2	321.8	128.36	3.507			
11,600.0	8,708.5	11,404.7	8,484.3	74.5	74.8	60.10	-3,728.6	-742.1	449.9	318.2	131.71	3.416			
11,700.0	8,708.0	11,504.7	8,484.2	76.4	76.6	60.14	-3,828.6	-742.7	449.6	314.5	135.06	3.329			
11,800.0	8,707.5	11,604.7	8,484.1	78.2	78.4	60.18	-3,928.6	-743.3	449.2	310.8	138.42	3.245			
11,900.0	8,707.0	11,704.7	8,484.0	80.1	80.3	60.23	-4,028.6	-743.9	448.9	307.1	141.79	3.166			
12,000.0	8,706.5	11,804.7	8,484.0	82.0	82.1	60.27	-4,128.5	-744.5	448.6	303.4	145.17	3.090			
12,100.0	8,705.9	11,904.7	8,483.9	83.8	84.0	60.31	-4,228.5	-745.1	448.3	299.7	148.55	3.018			
12,200.0	8,705.4	12,004.7	8,483.8	85.7	85.8	60.35	-4,328.5	-745.7	448.0	296.0	151.94	2.948			
12,300.0	8,704.9	12,104.7	8,483.8	87.6	87.7	60.39	-4,428.5	-746.3	447.6	292.3	155.33	2.882			
12,400.0	8,704.4	12,204.7	8,483.7	89.5	89.5	60.43	-4,528.5	-746.9	447.3	288.6	158.73	2.818			
12,500.0	8,703.9	12,304.7	8,483.6	91.3	91.4	60.48	-4,628.5	-747.5	447.0	284.9	162.14	2.757			
12,600.0	8,703.4	12,404.7	8,483.5	93.2	93.3	60.52	-4,728.5	-748.1	446.7	281.1	165.55	2.698			
12,700.0	8,702.9	12,504.7	8,483.5	95.1	95.1	60.56	-4,828.5	-748.7	446.4	277.4	168.97	2.642			
12,800.0	8,702.3	12,604.7	8,483.4	97.0	97.0	60.60	-4,928.5	-749.2	446.0	273.7	172.39	2.587			
12,900.0	8,701.8	12,704.6	8,483.3	98.9	98.9	60.64	-5,028.5	-749.8	445.7	269.9	175.82	2.535			
13,000.0	8,701.3	12,804.6	8,483.2	100.8	100.7	60.69	-5,128.5	-750.4	445.4	266.2	179.25	2.485			
13,100.0	8,700.8	12,904.6	8,483.2	102.7	102.6	60.73	-5,228.5	-751.0	445.1	262.4	182.69	2.436			
13,200.0	8,700.3	13,004.6	8,483.1	104.5	104.5	60.77	-5,328.5	-751.6	444.8	258.6	186.13	2.390			
13,300.0	8,699.8	13,104.6	8,483.0	106.4	106.4	60.81	-5,428.5	-752.2	444.5	254.9	189.58	2.344			

Company:	Clear Creek Resource Partners	Local Co-ordinate Reference:	Well True Ranch Fee 501-2703H
Project:	SEC.27-T12N-R65W	TVD Reference:	WELL @ 5941.0ft (Original Well Elev)
Reference Site:	True Ranch Fee 2703H East Pad Sec.27-T12N-R65W	MD Reference:	WELL @ 5941.0ft (Original Well Elev)
Site Error:	0.0 ft	North Reference:	True
Reference Well:	True Ranch Fee 501-2703H	Survey Calculation Method:	Minimum Curvature
Well Error:	0.0 ft	Output errors are at	2.00 sigma
Reference Wellbore	Wellbore #1	Database:	US_EDM
Reference Design:	Plan #3 (8-28-19)	Offset TVD Reference:	Offset Datum

Offset Design		True Ranch Fee 2703H East Pad Sec.27-T12N-R65W - True Ranch Fee 202-2703H - Wellbore #1 - Pla											Offset Site Error:		0.0 ft
Survey Program: 0-MWD													Offset Well Error:		0.0 ft
Reference		Offset		Semi Major Axis			Distance							Warning	
Measured Depth	Vertical Depth	Measured Depth	Vertical Depth	Reference	Offset	Highside Toolface	Offset Wellbore Centre +N/-S	+E/-W	Between Centres	Between Ellipses	Minimum Separation	Separation Factor			
(ft)	(ft)	(ft)	(ft)	(ft)	(ft)	(°)	(ft)	(ft)	(ft)	(ft)	(ft)				
13,400.0	8,699.3	13,204.6	8,483.0	108.3	108.3	60.85	-5,528.5	-752.8	444.1	251.1	193.03	2.301			
13,500.0	8,698.8	13,304.6	8,482.9	110.2	110.1	60.90	-5,628.5	-753.4	443.8	247.3	196.48	2.259			
13,600.0	8,698.2	13,404.6	8,482.8	112.1	112.0	60.94	-5,728.5	-754.0	443.5	243.6	199.94	2.218			
13,700.0	8,697.7	13,504.6	8,482.7	114.0	113.9	60.98	-5,828.5	-754.6	443.2	239.8	203.40	2.179			
13,800.0	8,697.2	13,604.6	8,482.7	115.9	115.8	61.03	-5,928.5	-755.2	442.9	236.0	206.87	2.141			
13,900.0	8,696.7	13,704.6	8,482.6	117.8	117.7	61.07	-6,028.5	-755.8	442.6	232.2	210.34	2.104			
14,000.0	8,696.2	13,804.6	8,482.5	119.7	119.6	61.11	-6,128.5	-756.4	442.2	228.4	213.82	2.068			
14,100.0	8,695.7	13,904.6	8,482.5	121.6	121.5	61.15	-6,228.5	-757.0	441.9	224.6	217.30	2.034			
14,200.0	8,695.2	14,004.6	8,482.4	123.5	123.4	61.20	-6,328.5	-757.6	441.6	220.8	220.78	2.000			
14,300.0	8,694.6	14,104.6	8,482.3	125.4	125.3	61.24	-6,428.5	-758.2	441.3	217.0	224.26	1.968			
14,400.0	8,694.1	14,204.6	8,482.2	127.3	127.2	61.28	-6,528.5	-758.8	441.0	213.2	227.75	1.936			
14,500.0	8,693.6	14,304.6	8,482.2	129.2	129.0	61.33	-6,628.5	-759.4	440.7	209.4	231.25	1.906			
14,600.0	8,693.1	14,404.6	8,482.1	131.1	130.9	61.37	-6,728.5	-760.0	440.3	205.6	234.74	1.876			
14,700.0	8,692.6	14,504.6	8,482.0	133.0	132.8	61.41	-6,828.5	-760.5	440.0	201.8	238.24	1.847			
14,800.0	8,692.1	14,604.6	8,482.0	134.9	134.7	61.45	-6,928.5	-761.1	439.7	198.0	241.75	1.819			
14,900.0	8,691.6	14,704.6	8,481.9	136.9	136.6	61.50	-7,028.5	-761.7	439.4	194.1	245.25	1.792			
15,000.0	8,691.0	14,804.6	8,481.8	138.8	138.5	61.54	-7,128.5	-762.3	439.1	190.3	248.76	1.765			
15,100.0	8,690.5	14,904.6	8,481.7	140.7	140.4	61.58	-7,228.5	-762.9	438.8	186.5	252.28	1.739			
15,200.0	8,690.0	15,004.6	8,481.7	142.6	142.3	61.63	-7,328.5	-763.5	438.5	182.7	255.79	1.714			
15,300.0	8,689.5	15,104.6	8,481.6	144.5	144.2	61.67	-7,428.5	-764.1	438.1	178.8	259.31	1.690			
15,400.0	8,689.0	15,204.6	8,481.5	146.4	146.1	61.72	-7,528.5	-764.7	437.8	175.0	262.83	1.666			
15,500.0	8,688.5	15,304.6	8,481.4	148.3	148.0	61.76	-7,628.5	-765.3	437.5	171.2	266.36	1.643			
15,600.0	8,688.0	15,404.6	8,481.4	150.2	150.0	61.80	-7,728.4	-765.9	437.2	167.3	269.89	1.620			
15,700.0	8,687.5	15,504.6	8,481.3	152.1	151.9	61.85	-7,828.4	-766.5	436.9	163.5	273.42	1.598			
15,800.0	8,686.9	15,604.6	8,481.2	154.0	153.8	61.89	-7,928.4	-767.1	436.6	159.6	276.95	1.576			
15,900.0	8,686.4	15,704.6	8,481.2	156.0	155.7	61.93	-8,028.4	-767.7	436.3	155.8	280.49	1.555			
16,000.0	8,685.9	15,804.6	8,481.1	157.9	157.6	61.98	-8,128.4	-768.3	436.0	151.9	284.03	1.535			
16,100.0	8,685.4	15,904.6	8,481.0	159.8	159.5	62.02	-8,228.4	-768.9	435.7	148.1	287.58	1.515			
16,200.0	8,684.9	16,004.6	8,480.9	161.7	161.4	62.07	-8,328.4	-769.5	435.3	144.2	291.12	1.495	Level 3		
16,300.0	8,684.4	16,104.6	8,480.9	163.6	163.3	62.11	-8,428.4	-770.1	435.0	140.4	294.67	1.476	Level 3		
16,400.0	8,683.9	16,204.6	8,480.8	165.5	165.2	62.15	-8,528.4	-770.7	434.7	136.5	298.23	1.458	Level 3		
16,500.0	8,683.3	16,304.6	8,480.7	167.4	167.1	62.20	-8,628.4	-771.2	434.4	132.6	301.78	1.439	Level 3		
16,600.0	8,682.8	16,404.6	8,480.7	169.3	169.0	62.24	-8,728.4	-771.8	434.1	128.8	305.34	1.422	Level 3		
16,700.0	8,682.3	16,504.6	8,480.6	171.3	170.9	62.29	-8,828.4	-772.4	433.8	124.9	308.90	1.404	Level 3		
16,800.0	8,681.8	16,604.6	8,480.5	173.2	172.8	62.33	-8,928.4	-773.0	433.5	121.0	312.47	1.387	Level 3		
16,900.0	8,681.3	16,704.6	8,480.4	175.1	174.8	62.38	-9,028.4	-773.6	433.2	117.1	316.03	1.371	Level 3		
17,000.0	8,680.8	16,804.6	8,480.4	177.0	176.7	62.42	-9,128.4	-774.2	432.9	113.3	319.60	1.354	Level 3		
17,100.0	8,680.3	16,904.6	8,480.3	178.9	178.6	62.47	-9,228.4	-774.8	432.6	109.4	323.17	1.338	Level 3		
17,200.0	8,679.8	17,004.6	8,480.2	180.8	180.5	62.51	-9,328.4	-775.4	432.3	105.5	326.75	1.323	Level 3		
17,300.0	8,679.2	17,104.6	8,480.2	182.8	182.4	62.56	-9,428.4	-776.0	431.9	101.6	330.33	1.308	Level 3		
17,400.0	8,678.7	17,204.6	8,480.1	184.7	184.3	62.60	-9,528.4	-776.6	431.6	97.7	333.91	1.293	Level 3		
17,500.0	8,678.2	17,304.6	8,480.0	186.6	186.2	62.65	-9,628.4	-777.2	431.3	93.8	337.49	1.278	Level 3		
17,600.0	8,677.7	17,404.6	8,479.9	188.5	188.1	62.69	-9,728.4	-777.8	431.0	89.9	341.08	1.264	Level 3		
17,700.0	8,677.2	17,504.6	8,479.9	190.4	190.1	62.74	-9,828.4	-778.4	430.7	86.1	344.67	1.250	Level 2		
17,800.0	8,676.7	17,604.6	8,479.8	192.3	192.0	62.78	-9,928.4	-779.0	430.4	82.2	348.26	1.236	Level 2		
17,900.0	8,676.2	17,704.6	8,479.7	194.3	193.9	62.83	-10,028.4	-779.6	430.1	78.3	351.85	1.222	Level 2		
18,000.0	8,675.6	17,804.6	8,479.7	196.2	195.8	62.87	-10,128.4	-780.2	429.8	74.4	355.45	1.209	Level 2		
18,100.0	8,675.1	17,904.6	8,479.6	198.1	197.7	62.92	-10,228.4	-780.8	429.5	70.4	359.05	1.196	Level 2		
18,200.0	8,674.6	18,004.6	8,479.5	200.0	199.6	62.96	-10,328.4	-781.4	429.2	66.5	362.65	1.183	Level 2		
18,300.0	8,674.1	18,104.6	8,479.4	201.9	201.5	63.01	-10,428.4	-782.0	428.9	62.6	366.25	1.171	Level 2		
18,400.0	8,673.6	18,204.6	8,479.4	203.8	203.5	63.05	-10,528.4	-782.5	428.6	58.7	369.86	1.159	Level 2		

CC - Min centre to center distance or convergent point, SF - min separation factor, ES - min ellipse separation

Company:	Clear Creek Resource Partners	Local Co-ordinate Reference:	Well True Ranch Fee 501-2703H
Project:	SEC.27-T12N-R65W	TVD Reference:	WELL @ 5941.0ft (Original Well Elev)
Reference Site:	True Ranch Fee 2703H East Pad Sec.27-T12N-R65W	MD Reference:	WELL @ 5941.0ft (Original Well Elev)
Site Error:	0.0 ft	North Reference:	True
Reference Well:	True Ranch Fee 501-2703H	Survey Calculation Method:	Minimum Curvature
Well Error:	0.0 ft	Output errors are at	2.00 sigma
Reference Wellbore	Wellbore #1	Database:	US_EDM
Reference Design:	Plan #3 (8-28-19)	Offset TVD Reference:	Offset Datum

Offset Design												Offset Site Error:	0.0 ft
True Ranch Fee 2703H East Pad Sec.27-T12N-R65W - True Ranch Fee 202-2703H - Wellbore #1 - Pla												Offset Well Error:	0.0 ft
Survey Program: 0-MWD													
Reference		Offset		Semi Major Axis		Distance							
Measured Depth (ft)	Vertical Depth (ft)	Measured Depth (ft)	Vertical Depth (ft)	Reference (ft)	Offset (ft)	Highside Toolface (°)	Offset Wellbore Centre +N/-S (ft)	+E/-W (ft)	Between Centres (ft)	Between Ellipses (ft)	Minimum Separation (ft)	Separation Factor	Warning
18,500.0	8,673.1	18,304.6	8,479.3	205.8	205.4	63.10	-10,628.4	-783.1	428.3	54.8	373.47	1.147	Level 2
18,600.0	8,672.6	18,404.6	8,479.2	207.7	207.3	63.14	-10,728.4	-783.7	428.0	50.9	377.08	1.135	Level 2
18,700.0	8,672.0	18,504.6	8,479.1	209.6	209.2	63.19	-10,828.4	-784.3	427.7	47.0	380.70	1.123	Level 2
18,800.0	8,671.5	18,604.6	8,479.1	211.5	211.1	63.24	-10,928.4	-784.9	427.4	43.0	384.31	1.112	Level 2
18,903.8	8,671.0	18,708.4	8,479.0	213.5	213.1	63.28	-11,032.2	-785.5	427.0	39.0	388.07	1.100	Level 2
18,904.3	8,671.0	18,708.9	8,479.0	213.5	213.1	63.28	-11,032.6	-785.5	427.0	39.0	388.09	1.100	Level 2, SF

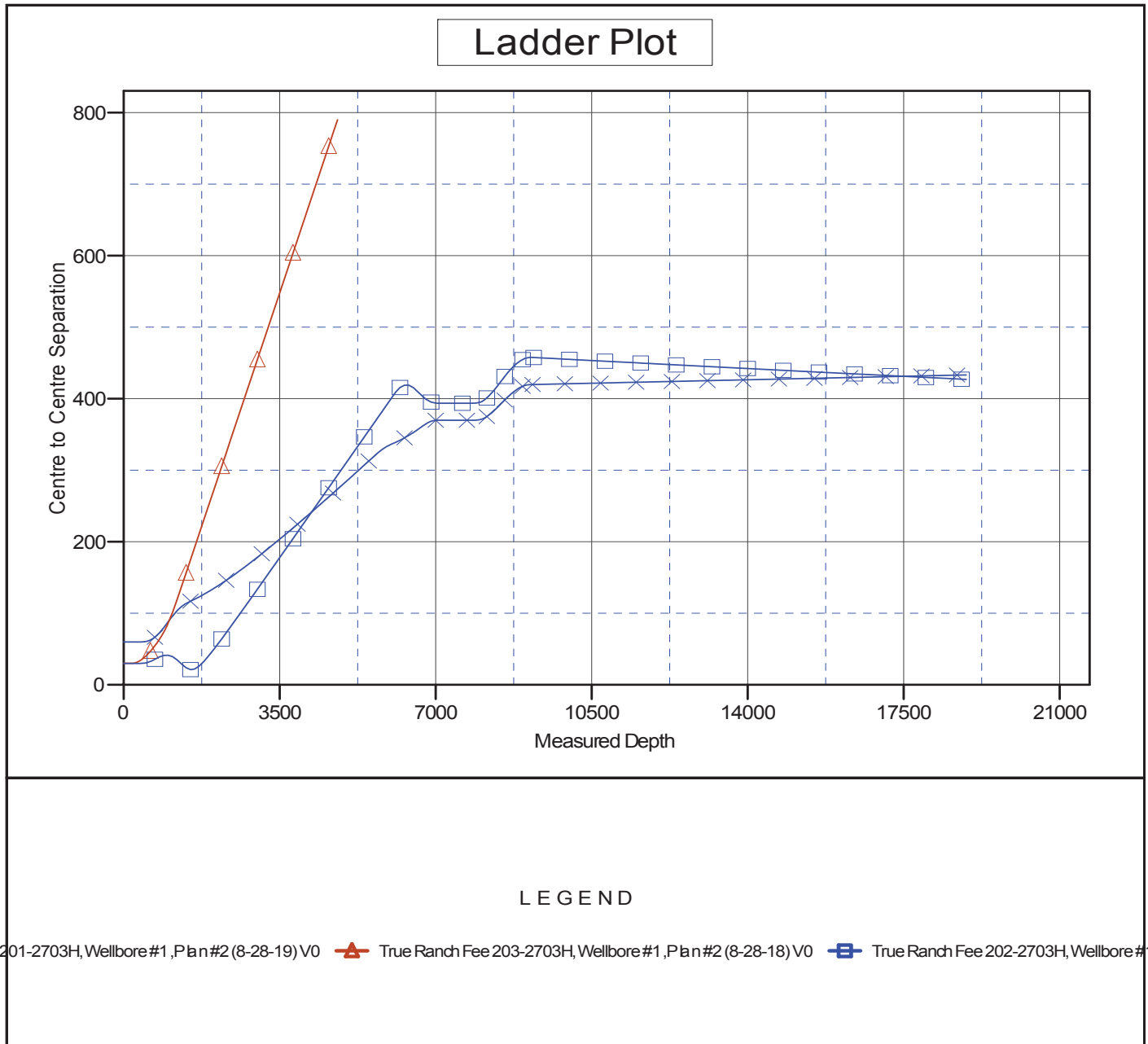
Company:	Clear Creek Resource Partners	Local Co-ordinate Reference:	Well True Ranch Fee 501-2703H
Project:	SEC.27-T12N-R65W	TVD Reference:	WELL @ 5941.0ft (Original Well Elev)
Reference Site:	True Ranch Fee 2703H East Pad Sec.27-T12N-R65W	MD Reference:	WELL @ 5941.0ft (Original Well Elev)
Site Error:	0.0 ft	North Reference:	True
Reference Well:	True Ranch Fee 501-2703H	Survey Calculation Method:	Minimum Curvature
Well Error:	0.0 ft	Output errors are at	2.00 sigma
Reference Wellbore	Wellbore #1	Database:	US_EDM
Reference Design:	Plan #3 (8-28-19)	Offset TVD Reference:	Offset Datum

Offset Design													Offset Site Error:	0.0 ft
Survey Program: 0-MWD													Offset Well Error:	0.0 ft
Reference		Offset		Semi Major Axis			Distance							Warning
Measured Depth (ft)	Vertical Depth (ft)	Measured Depth (ft)	Vertical Depth (ft)	Reference (ft)	Offset (ft)	Highside Toolface (°)	Offset Wellbore Centre +N/-S (ft)	+E/-W (ft)	Between Centres (ft)	Between Ellipses (ft)	Minimum Separation (ft)	Separation Factor		
0.0	0.0	1.0	1.0	0.0	0.0	-89.31	0.4	-30.1	30.1	30.1	0.00	N/A		
100.0	100.0	101.0	101.0	0.1	0.1	-89.31	0.4	-30.1	30.1	29.9	0.23	132.600		
166.3	166.3	167.3	167.3	0.3	0.3	-89.31	0.4	-30.1	30.1	29.6	0.53	57.317 CC		
200.0	200.0	201.0	201.0	0.3	0.3	-89.31	0.4	-30.1	30.1	29.4	0.68	44.505 ES		
300.0	300.0	300.0	300.0	0.6	0.5	-90.21	-0.1	-31.3	31.3	30.2	1.11	28.251		
400.0	400.0	399.4	399.3	0.8	0.8	-92.52	-1.5	-34.9	35.0	33.5	1.55	22.657		
500.0	500.0	498.3	498.0	1.0	1.0	56.37	-3.9	-40.9	40.5	38.5	1.97	20.603		
600.0	599.9	597.0	596.3	1.2	1.2	56.93	-7.2	-49.3	47.0	44.6	2.39	19.702		
700.0	699.7	695.5	694.1	1.4	1.5	58.77	-11.4	-60.0	54.6	51.7	2.84	19.243		
806.4	805.6	800.0	797.5	1.6	1.9	61.48	-16.8	-73.9	63.9	60.5	3.35	19.042 SF		
900.0	898.7	891.4	887.7	1.9	2.2	63.49	-22.5	-88.2	73.7	69.9	3.84	19.180		
1,000.0	998.1	988.8	983.2	2.2	2.6	64.39	-29.3	-105.6	86.6	82.2	4.39	19.708		
1,100.0	1,097.6	1,085.5	1,077.6	2.4	3.0	64.43	-37.0	-125.2	101.7	96.7	4.96	20.508		
1,200.0	1,197.0	1,181.5	1,170.7	2.7	3.5	63.95	-45.5	-146.8	119.0	113.5	5.53	21.508		
1,300.0	1,296.4	1,279.6	1,265.5	3.0	4.0	63.33	-54.7	-170.1	137.6	131.5	6.12	22.479		
1,400.0	1,395.9	1,377.8	1,360.5	3.3	4.5	62.85	-63.9	-193.5	156.2	149.5	6.71	23.279		
1,500.0	1,495.3	1,476.0	1,455.5	3.6	5.1	62.48	-73.1	-216.9	174.9	167.6	7.31	23.927		
1,600.0	1,594.7	1,574.3	1,550.5	3.9	5.6	62.18	-82.2	-240.2	193.5	185.6	7.91	24.470		
1,700.0	1,694.2	1,672.5	1,645.5	4.2	6.1	61.93	-91.4	-263.6	212.1	203.6	8.51	24.928		
1,800.0	1,793.6	1,770.8	1,740.4	4.5	6.7	61.73	-100.6	-286.9	230.8	221.6	9.11	25.319		
1,900.0	1,893.1	1,869.0	1,835.4	4.8	7.2	61.55	-109.8	-310.3	249.4	239.7	9.72	25.657		
2,000.0	1,992.5	1,967.3	1,930.4	5.1	7.7	61.40	-119.0	-333.7	268.0	257.7	10.33	25.951		
2,100.0	2,091.9	2,065.5	2,025.4	5.4	8.3	61.26	-128.2	-357.0	286.7	275.7	10.94	26.210		
2,200.0	2,191.4	2,163.8	2,120.4	5.7	8.8	61.15	-137.4	-380.4	305.3	293.8	11.55	26.439		
2,300.0	2,290.8	2,262.0	2,215.4	6.0	9.4	61.04	-146.5	-403.8	324.0	311.8	12.16	26.643		
2,400.0	2,390.2	2,360.2	2,310.4	6.3	9.9	60.95	-155.7	-427.1	342.6	329.8	12.77	26.826		
2,500.0	2,489.7	2,458.5	2,405.3	6.6	10.4	60.87	-164.9	-450.5	361.3	347.9	13.38	26.991		
2,600.0	2,589.1	2,556.7	2,500.3	6.9	11.0	60.80	-174.1	-473.9	379.9	365.9	14.00	27.140		
2,700.0	2,688.5	2,655.0	2,595.3	7.2	11.5	60.73	-183.3	-497.2	398.5	383.9	14.61	27.276		
2,800.0	2,788.0	2,753.2	2,690.3	7.5	12.1	60.67	-192.5	-520.6	417.2	402.0	15.23	27.400		
2,900.0	2,887.4	2,851.5	2,785.3	7.8	12.6	60.61	-201.6	-543.9	435.8	420.0	15.84	27.514		
3,000.0	2,986.8	2,949.7	2,880.3	8.2	13.2	60.56	-210.8	-567.3	454.5	438.0	16.46	27.618		
3,100.0	3,086.3	3,048.0	2,975.2	8.5	13.7	60.51	-220.0	-590.7	473.1	456.1	17.07	27.715		
3,200.0	3,185.7	3,146.2	3,070.2	8.8	14.3	60.47	-229.2	-614.0	491.8	474.1	17.69	27.805		
3,300.0	3,285.1	3,244.5	3,165.2	9.1	14.8	60.43	-238.4	-637.4	510.4	492.1	18.30	27.888		
3,400.0	3,384.6	3,342.7	3,260.2	9.4	15.3	60.39	-247.6	-660.8	529.1	510.2	18.92	27.965		
3,500.0	3,484.0	3,440.9	3,355.2	9.7	15.9	60.36	-256.8	-684.1	547.7	528.2	19.54	28.037		
3,600.0	3,583.4	3,539.2	3,450.2	10.0	16.4	60.32	-265.9	-707.5	566.4	546.2	20.15	28.105		
3,700.0	3,682.9	3,637.4	3,545.1	10.3	17.0	60.29	-275.1	-730.8	585.0	564.3	20.77	28.168		
3,800.0	3,782.3	3,735.7	3,640.1	10.6	17.5	60.26	-284.3	-754.2	603.7	582.3	21.39	28.228		
3,900.0	3,881.7	3,833.9	3,735.1	10.9	18.1	60.24	-293.5	-777.6	622.3	600.3	22.00	28.283		
4,000.0	3,981.2	3,932.2	3,830.1	11.2	18.6	60.21	-302.7	-800.9	641.0	618.4	22.62	28.336		
4,100.0	4,080.6	4,030.4	3,925.1	11.5	19.2	60.19	-311.9	-824.3	659.6	636.4	23.24	28.386		
4,200.0	4,180.0	4,128.7	4,020.1	11.8	19.7	60.16	-321.1	-847.7	678.3	654.4	23.86	28.433		
4,300.0	4,279.5	4,226.9	4,115.0	12.1	20.3	60.14	-330.2	-871.0	696.9	672.5	24.47	28.478		
4,400.0	4,378.9	4,325.1	4,210.0	12.4	20.8	60.12	-339.4	-894.4	715.6	690.5	25.09	28.520		
4,500.0	4,478.4	4,423.4	4,305.0	12.7	21.4	60.10	-348.6	-917.8	734.2	708.5	25.71	28.560		
4,600.0	4,577.8	4,521.6	4,400.0	13.1	21.9	60.08	-357.8	-941.1	752.9	726.6	26.33	28.598		
4,700.0	4,677.2	4,619.9	4,495.0	13.4	22.5	60.07	-367.0	-964.5	771.5	744.6	26.94	28.634		
4,800.0	4,776.7	4,718.1	4,590.0	13.7	23.0	60.05	-376.2	-987.8	790.2	762.6	27.56	28.669		

Company:	Clear Creek Resource Partners	Local Co-ordinate Reference:	Well True Ranch Fee 501-2703H
Project:	SEC.27-T12N-R65W	TVD Reference:	WELL @ 5941.0ft (Original Well Elev)
Reference Site:	True Ranch Fee 2703H East Pad Sec.27-T12N-R65W	MD Reference:	WELL @ 5941.0ft (Original Well Elev)
Site Error:	0.0 ft	North Reference:	True
Reference Well:	True Ranch Fee 501-2703H	Survey Calculation Method:	Minimum Curvature
Well Error:	0.0 ft	Output errors are at	2.00 sigma
Reference Wellbore	Wellbore #1	Database:	US_EDM
Reference Design:	Plan #3 (8-28-19)	Offset TVD Reference:	Offset Datum

Reference Depths are relative to WELL @ 5941.0ft (Original Well Elev)
Offset Depths are relative to Offset Datum
Central Meridian is -105.500000

Coordinates are relative to: True Ranch Fee 501-2703H
Coordinate System is US State Plane 1983, Colorado Northern Zone
Grid Convergence at Surface is: 0.56°



Company:	Clear Creek Resource Partners	Local Co-ordinate Reference:	Well True Ranch Fee 501-2703H
Project:	SEC.27-T12N-R65W	TVD Reference:	WELL @ 5941.0ft (Original Well Elev)
Reference Site:	True Ranch Fee 2703H East Pad Sec.27-T12N-R65W	MD Reference:	WELL @ 5941.0ft (Original Well Elev)
Site Error:	0.0 ft	North Reference:	True
Reference Well:	True Ranch Fee 501-2703H	Survey Calculation Method:	Minimum Curvature
Well Error:	0.0 ft	Output errors are at	2.00 sigma
Reference Wellbore	Wellbore #1	Database:	US_EDM
Reference Design:	Plan #3 (8-28-19)	Offset TVD Reference:	Offset Datum

Reference Depths are relative to WELL @ 5941.0ft (Original Well Elev)
Offset Depths are relative to Offset Datum
Central Meridian is -105.500000

Coordinates are relative to: True Ranch Fee 501-2703H
Coordinate System is US State Plane 1983, Colorado Northern Zone
Grid Convergence at Surface is: 0.56°

