



# SRC Energy

## Rev 0

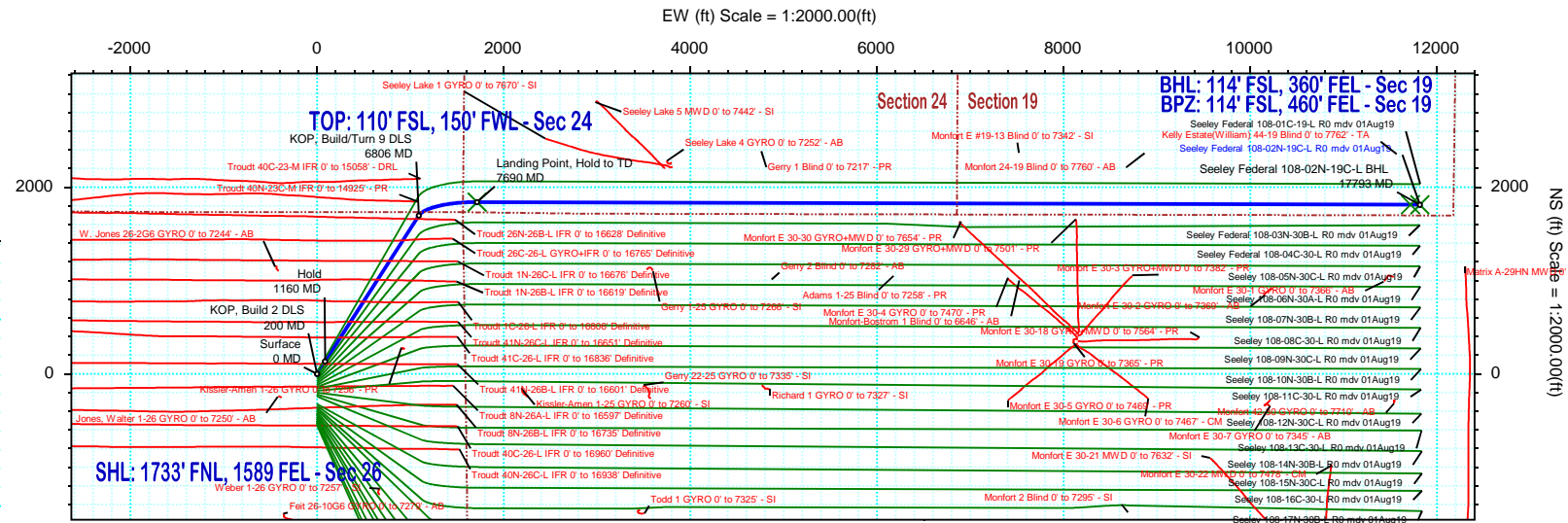
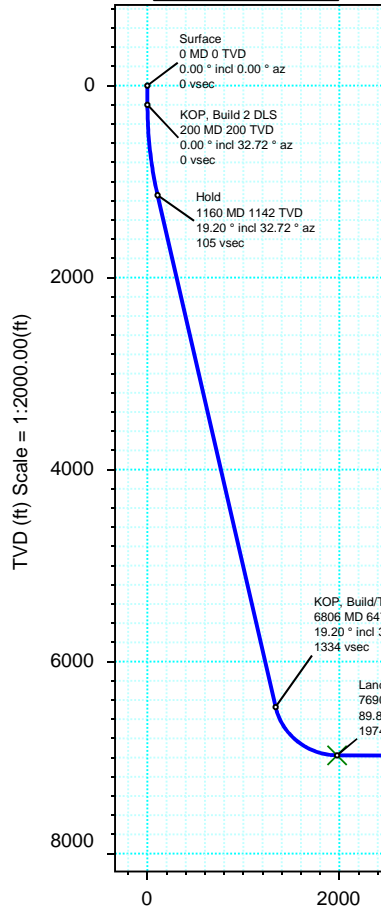
# Schlumberger

Borehole: <b>Original Hole</b>		Well: <b>Seeley Federal 108-02N-19C-L</b>	Field: <b>CO, Weld County (NAD 83 NZ) - SRC</b>	Structure: <b>SRC Energy 26-06N-66W (Chalk-Seeley Federal 7-26 Pad DSU 108)</b>
Gravity & Magnetic Parameters Model: HDGM 2019 Dip: 66.848° Date: 31-Jul-2019 MagDec: 8.055° FS: 52216.412nT Gravity FS: 999.049mgn (9.80665 Based)		Surface Location NAD83 Colorado State Plane, Northern Zone, US Feet Lat: N 40 27 42.58 Northing: 1411989.12ftUS Grid Conv: 0.4907° Lon: W 104 44 26.12 Easting: 3211308.35ftUS Scale Fact: 0.99996361		Miscellaneous Slot: Seeley Federal 108-02N-19C-L TVD Ref: KB 4ft(4702ft above MSL) Plan: Seeley Federal 108-02N-19C-L R0 mdv 01Aug19

## Proposal



True North  
Tot Corr (M->T 8.055°)  
Mag Dec (8.055°)  
Grid Conv (0.491°)



Target Description		Surface Location		Grid Coord		Local Coord	
Target Name	Latitude	Longitude	North	East	TVD	N(+)S(-)	E(+)W(-)
Seeley Federal 7-26 Pad Sec 24-19	N 40 27 41.99	W 104 44 26.12	1411929.38	3211308.58	4702.00	-9.33	-0.28
Seeley Federal 7-26 Pad Sec 26 E Line	N 40 27 42.78	W 104 44 26.12	1412009.16	3211308.46	4702.00	3.31	0.28
Seeley Federal 7-26 Pad Sec 26	N 40 27 41.99	W 104 44 26.12	1411929.38	3211308.58	4702.00	-9.33	-0.28
Seeley Federal 108-02N-19C-L TOP	N 40 28 0.78	W 104 44 3.92	1413845.10	3213008.68	6977.00	1975.53	1841.42
Seeley Federal 108-02N-19C-L BPZ	N 40 28 0.47	W 104 41 54.51	1413902.04	3223009.75	7010.00	11857.17	1812.71
Seeley Federal 108-02N-19C-L BHL	N 40 28 0.46	W 104 41 53.22	1413902.58	3223109.63	7010.00	11955.86	1812.39

Critical Points							
Critical Point	MD	INCL	AZIM	TVD	VSEC	N(+)S(-)	E(+)W(-)
Surface	0.00	0.00	0.00	0.00	0.00	0.00	0.00
KOP, Build 2 DLS	200.00	0.00	32.72	200.00	0.00	0.00	0.00
Hold	1160.14	19.20	32.72	1142.27	105.49	134.11	86.16
KOP, Build/Turn 9 DLS	6805.61	19.20	32.72	6473.63	1334.38	1696.36	1089.82
Landing Point, Hold to TD	7690.32	89.81	90.17	6976.50	1974.15	1841.66	1714.79
Seeley Federal 108-02N-19C-L BHL	17793.32	89.81	90.17	7010.00	11955.86	1812.39	11817.69

Vertical Section (ft) Azim = 81.28° Scale = 1:2000.00(ft) Origin = 0N/-S, 0E/-W



# Seeley Federal 108-02N-19C-L R0 mdv 01Aug19 Proposal Geodetic Report

(Def Plan)

**Report Date:** August 27, 2019 - 08:35 AM  
**Client:** SRC Energy  
**Field:** CO, Weld County (NAD 83 NZ) - SRC  
**Structure / Slot:** SRC Energy 26-06N-66W (Chalk-Seeley Federal 7-26 Pad DSU 108) / Seeley Federal 108-02N-19C-L  
**Well:** Seeley Federal 108-02N-19C-L  
**Borehole:** Original Hole  
**UWI / API#:** Unknown / 05-123-48894  
**Survey Name:** Seeley Federal 108-02N-19C-L R0 mdv 01Aug19  
**Survey Date:** July 18, 2019  
**Tort / AHD / DDI / ERD Ratio:** 98.827 ° / 12775.591 ft / 6.506 / 1.822  
**Coordinate Reference System:** NAD83 Colorado State Plane, Northern Zone, US Feet  
**Location Lat / Long:** N 40° 27' 42.58080", W 104° 44' 26.12040"  
**Location Grid N/E Y/X:** N 1411989.122 ftUS, E 3211308.350 ftUS  
**CRS Grid Convergence Angle:** 0.4907 °  
**Grid Scale Factor:** 0.99996361  
**Version / Patch:** 2.10.760.0

**Survey / DLS Computation:** Minimum Curvature / Lubinski  
**Vertical Section Azimuth:** 81.281 ° (True North)  
**Vertical Section Origin:** 0.000 ft, 0.000 ft  
**TVD Reference Datum:** KB 4ft  
**TVD Reference Elevation:** 4702.000 ft above MSL  
**Seabed / Ground Elevation:** 4698.000 ft above MSL  
**Magnetic Declination:** 8.055 °  
**Total Gravity Field Strength:** 999.0490mgn (9.80665 Based)  
**Gravity Model:** GARM  
**Total Magnetic Field Strength:** 52216.412 nT  
**Magnetic Dip Angle:** 66.848 °  
**Declination Date:** July 31, 2019  
**Magnetic Declination Model:** HDGM 2019  
**North Reference:** True North  
**Grid Convergence Used:** 0.0000 °  
**Total Corr Mag North->True North:** 8.0550 °  
**Local Coord Referenced To:** Well Head

Comments	MD (ft)	Incl (°)	Azim True (°)	TVD (ft)	VSEC (ft)	NS (ft)	EW (ft)	DLS (°/100ft)	Northing (ftUS)	Easting (ftUS)	Latitude (°)	Longitude (°)
Surface	0.00	0.00	0.00	0.00	0.00	0.00	0.00	N/A	1411989.12	3211308.35	40.461828	-104.740589
	100.00	0.00	32.72	100.00	0.00	0.00	0.00	0.00	1411989.12	3211308.35	40.461828	-104.740589
KOP, Build 2 DLS	200.00	0.00	32.72	200.00	0.00	0.00	0.00	0.00	1411989.12	3211308.35	40.461828	-104.740589
	300.00	2.00	32.72	299.98	1.15	1.47	0.94	2.00	1411990.60	3211309.28	40.461832	-104.740586
	400.00	4.00	32.72	399.84	4.62	5.87	3.77	2.00	1411995.03	3211312.07	40.461844	-104.740575
	500.00	6.00	32.72	499.45	10.39	13.20	8.48	2.00	1412002.40	3211316.72	40.461864	-104.740559
	600.00	8.00	32.72	598.70	18.45	23.46	15.07	2.00	1412012.71	3211323.22	40.461892	-104.740535
	700.00	10.00	32.72	697.47	28.80	36.62	23.52	2.00	1412025.94	3211331.56	40.461929	-104.740504
	800.00	12.00	32.72	795.62	41.43	52.67	33.84	2.00	1412042.08	3211341.73	40.461973	-104.740467
	900.00	14.00	32.72	893.06	56.32	71.59	46.00	2.00	1412061.11	3211353.73	40.462025	-104.740424
	1000.00	16.00	32.72	989.64	73.45	93.37	59.98	2.00	1412083.00	3211367.53	40.462084	-104.740373
Hold	1100.00	18.00	32.72	1085.27	92.79	117.97	75.79	2.00	1412107.73	3211383.12	40.462152	-104.740317
	1160.14	19.20	32.72	1142.27	105.49	134.11	86.16	2.00	1412123.96	3211393.35	40.462196	-104.740279
	1200.00	19.20	32.72	1179.91	114.17	145.14	93.24	0.00	1412135.05	3211400.34	40.462226	-104.740254
	1300.00	19.20	32.72	1274.34	135.93	172.81	111.02	0.00	1412162.87	3211417.88	40.462302	-104.740190
	1400.00	19.20	32.72	1368.78	157.70	200.48	128.80	0.00	1412190.69	3211435.42	40.462378	-104.740126
	1500.00	19.20	32.72	1463.22	179.47	228.15	146.58	0.00	1412218.51	3211452.96	40.462454	-104.740062
	1600.00	19.20	32.72	1557.65	201.24	255.83	164.35	0.00	1412246.34	3211470.50	40.462530	-104.739998
	1700.00	19.20	32.72	1652.09	223.00	283.50	182.13	0.00	1412274.16	3211488.04	40.462606	-104.739934
	1800.00	19.20	32.72	1746.52	244.77	311.17	199.91	0.00	1412301.98	3211505.58	40.462682	-104.739871
	1900.00	19.20	32.72	1840.96	266.54	338.84	217.69	0.00	1412329.81	3211523.12	40.462758	-104.739807
	2000.00	19.20	32.72	1935.40	288.31	366.52	235.47	0.00	1412357.63	3211540.66	40.462834	-104.739743
	2100.00	19.20	32.72	2029.83	310.07	394.19	253.25	0.00	1412385.45	3211558.20	40.462910	-104.739679
	2200.00	19.20	32.72	2124.27	331.84	421.86	271.02	0.00	1412413.27	3211575.74	40.462986	-104.739615
	2300.00	19.20	32.72	2218.70	353.61	449.53	288.80	0.00	1412441.10	3211593.28	40.463062	-104.739551
	2400.00	19.20	32.72	2313.14	375.38	477.21	306.58	0.00	1412468.92	3211610.82	40.463138	-104.739487
	2500.00	19.20	32.72	2407.58	397.15	504.88	324.36	0.00	1412496.74	3211628.36	40.463214	-104.739423
	2600.00	19.20	32.72	2502.01	418.91	532.55	342.14	0.00	1412524.56	3211645.90	40.463290	-104.739359
	2700.00	19.20	32.72	2596.45	440.68	560.23	359.92	0.00	1412552.39	3211663.44	40.463366	-104.739296
	2800.00	19.20	32.72	2690.88	462.45	587.90	377.69	0.00	1412580.21	3211680.98	40.463442	-104.739232
	2900.00	19.20	32.72	2785.32	484.22	615.57	395.47	0.00	1412608.03	3211698.52	40.463518	-104.739168
	3000.00	19.20	32.72	2879.76	505.98	643.24	413.25	0.00	1412635.86	3211716.06	40.463594	-104.739104
	3100.00	19.20	32.72	2974.19	527.75	670.92	431.03	0.00	1412663.68	3211733.60	40.463670	-104.739040
	3200.00	19.20	32.72	3068.63	549.52	698.59	448.81	0.00	1412691.50	3211751.14	40.463746	-104.738976
	3300.00	19.20	32.72	3163.06	571.29	726.26	466.58	0.00	1412719.32	3211768.68	40.463822	-104.738912
	3400.00	19.20	32.72	3257.50	593.05	753.93	484.36	0.00	1412747.15	3211786.22	40.463897	-104.738848
	3500.00	19.20	32.72	3351.94	614.82	781.61	502.14	0.00	1412774.97	3211803.76	40.463973	-104.738784
	3600.00	19.20	32.72	3446.37	636.59	809.28	519.92	0.00	1412802.79	3211821.30	40.464049	-104.738721
	3700.00	19.20	32.72	3540.81	658.36	836.95	537.70	0.00	1412830.62	3211838.84	40.464125	-104.738657
	3800.00	19.20	32.72	3635.24	680.12	864.62	555.48	0.00	1412858.44	3211856.38	40.464201	-104.738593
	3900.00	19.20	32.72	3729.68	701.89	892.30	573.25	0.00	1412886.26	3211873.92	40.464277	-104.738529
	4000.00	19.20	32.72	3824.12	723.66	919.97	591.03	0.00	1412914.08	3211891.46	40.464353	-104.738465
	4100.00	19.20	32.72	3918.55	745.43	947.64	608.81	0.00	1412941.91	3211909.00	40.464429	-104.738401
	4200.00	19.20	32.72	4012.99	767.20	975.31	626.59	0.00	1412969.73	3211926.54	40.464505	-104.738337
	4300.00	19.20	32.72	4107.42	788.96	1002.99	644.37	0.00	1412997.55	3211944.08	40.464581	-104.738273
	4400.00	19.20	32.72	4201.86	810.73	1030.66	662.14	0.00	1413025.37	3211961.62	40.464657	-104.738209
	4500.00	19.20	32.72	4296.30	832.50	1058.33	679.92	0.00	1413053.20	3211979.16	40.464733	-104.738145
4600.00	19.20	32.72	4390.73	854.27	1086.00	697.70	0.00	1413081.02	3211996.70	40.464809	-104.738082	
4700.00	19.20	32.72	4485.17	876.03	1113.68	715.48	0.00	1413108.84	3212014.24	40.464885	-104.738018	
4800.00	19.20	32.72	4579.60	897.80	1141.35	733.26	0.00	1413136.67	3212031.78	40.464961	-104.737954	
4900.00	19.20	32.72	4674.04	919.57	1169.02	751.04	0.00	1413164.49	3212049.32	40.465037	-104.737890	
5000.00	19.20	32.72	4768.48	941.34	1196.70	768.81	0.00	1413192.31	3212066.86	40.465113	-104.737826	
5100.00	19.20	32.72	4862.91	963.10	1224.37	786.59	0.00	1413220.13	3212084.40	40.465189	-104.737762	
5200.00	19.20	32.72	4957.35	984.87	1252.04	804.37	0.00	1413247.96	3212101.94	40.465265	-104.737698	
5300.00	19.20	32.72	5051.78	1006.64	1279.71	822.15	0.00	1413275.78	3212119.48	40.465341	-104.737634	
5400.00	19.20	32.72	5146.22	1028.41	1307.39	839.93	0.00	1413303.60	3212137.02	40.465417	-104.737570	
5500.00	19.20	32.72	5240.66	1050.17	1335.06	857.71	0.00	1413331.43	3212154.56	40.465493	-104.737507	
5600.00	19.20	32.72	5335.09	1071.94	1362.73	875.48	0.00	1413359.25	3212172.10	40.465568	-104.737443	
5700.00	19.20	32.72	5429.53	1093.71	1390.40	893.26	0.00	1413387.07	3212189.64	40.465644	-104.737379	
5800.00	19.20	32.72	5523.96	1115.48	1418.08	911.04	0.00	1413414.89	3212207.18	40.465720	-104.737315	
5900.00	19.20	32.72	5618.40	1137.25	1445.75	928.82	0.00	1413442.72	3212224.72	40.465796	-104.737251	
6000.00	19.20	32.72	5712.84	1159.01	1473.42	946.60	0.00	1413470.54	3212242.26	40.465872	-104.737187	
6100.00	19.20	32.72	5807.27	1180.78	1501.09	964.37	0.00	1413498.36	3212259.80	40.465948	-104.737123	
6200.00	19.20	32.72	5901.71	1202.55	1528.77	982.15	0.00	1413526.19	3212277.34	40.466024	-104.737059	
6300.00	19.20	32.72	5996.14	1224.32	1556.44	999.93	0.00	1413554.01	3212294.88	40.466100	-104.736995	
6400.00	19.20	32.72	6090.58	1246.08	1584.11	1017.71	0.00	1413581.83	3212312.42	40.466176	-104.736931	
6500.00	19.20	32.72	6185.02	1267.85	1611.78	1035.49	0.00	1413609.65	3212329.96	40.466252	-104.736868	
6600.00	19.20	32.72	6279.45	1289.62	1639.46	1053.27	0.00	1413637.48	3212347.50	40.466328	-104.736804	
6700.00	19.20	32.72	6373.89	1311.39	1667.13	1071.04	0.00	1413665.30	3212365.04	40.466404	-104.736740	
6800.00	19.20	32.72	6468.32	1333.15	1694.80	1088.82	0.00	1413693.12	3212382.58	40.466480	-104.736676	
KOP, Build/Turn 9 DLS	6805.61	19.20	32.72	6473.63	1334.38	1696.36	1089.82	0.00	1413694.68	3212383.56	40.466484	-104.736672
	6900.00	24.64	50.39	6561.25	1361.58	1722.01	1113.41	9.00	1413720.53	3212406.93	40.466555	-104.736587
	7000.00	31.82	61.97	6649.37	1404.44	1747.74	1152.82	9.00	1413746.60	3212446.12	40.466625	-104.736446
	7100.00	39.69	69.49	6730.49	1460.69	1771.36	1206.11	9.00	1413770.68	3212499.20	40.466690	-104.736254
	7200.00	47.90	74.83	6802.64	1528.95	1792.30	1271.95	9.00	1413792.18	3212564.86	40.466748	-104.736018

Comments	MD (ft)	Incl (°)	Azim True (°)	TVD (ft)	VSEC (ft)	NS (ft)	EW (ft)	DLS (°/100ft)	Northing (ftUS)	Easting (ftUS)	Latitude (°)	Longitude (°)
Landing Point, Hold to TD	7300.00	56.30	78.93	6864.03	1607.54	1810.04	1348.74	9.00	1413810.57	3212641.49	40.466796	-104.735742
	7400.00	64.82	82.28	6913.15	1694.52	1824.13	1434.58	9.00	1413825.40	3212727.20	40.466835	-104.735433
	7500.00	73.40	85.20	6948.78	1787.76	1834.24	1527.36	9.00	1413836.31	3212819.88	40.466863	-104.735100
	7600.00	82.01	87.86	6970.06	1884.95	1840.12	1624.78	9.00	1413843.02	3212917.25	40.466879	-104.734750
	7690.32	89.81	90.17	6976.50	1974.15	1841.66	1714.79	9.00	1413845.33	3213007.24	40.466883	-104.734426
	7700.00	89.81	90.17	6976.53	1983.71	1841.63	1724.47	0.00	1413845.38	3213016.92	40.466883	-104.734391
	7800.00	89.81	90.17	6976.86	2082.51	1841.34	1824.46	0.00	1413845.95	3213116.91	40.466882	-104.734032
	7900.00	89.81	90.17	6977.19	2181.31	1841.05	1924.46	0.00	1413846.52	3213216.90	40.466881	-104.733673
	8000.00	89.81	90.17	6977.52	2280.11	1840.76	2024.46	0.00	1413847.08	3213316.90	40.466880	-104.733313
	8100.00	89.81	90.17	6977.86	2378.91	1840.47	2124.46	0.00	1413847.65	3213416.89	40.466880	-104.732954
	8200.00	89.81	90.17	6978.19	2477.71	1840.18	2224.46	0.00	1413848.22	3213516.89	40.466879	-104.732594
	8300.00	89.81	90.17	6978.52	2576.51	1839.89	2324.46	0.00	1413848.78	3213616.88	40.466878	-104.732235
	8400.00	89.81	90.17	6978.85	2675.31	1839.60	2424.46	0.00	1413849.35	3213716.87	40.466877	-104.731876
	8500.00	89.81	90.17	6979.18	2774.11	1839.31	2524.46	0.00	1413849.92	3213816.87	40.466876	-104.731516
	8600.00	89.81	90.17	6979.51	2872.90	1839.02	2624.46	0.00	1413850.48	3213916.86	40.466875	-104.731157
	8700.00	89.81	90.17	6979.85	2971.70	1838.73	2724.46	0.00	1413851.05	3214016.86	40.466875	-104.730797
	8800.00	89.81	90.17	6980.18	3070.50	1838.44	2824.45	0.00	1413851.62	3214116.85	40.466874	-104.730438
	8900.00	89.81	90.17	6980.51	3169.30	1838.15	2924.45	0.00	1413852.18	3214216.84	40.466873	-104.730079
	9000.00	89.81	90.17	6980.84	3268.10	1837.87	3024.45	0.00	1413852.75	3214316.84	40.466872	-104.729719
	9100.00	89.81	90.17	6981.17	3366.90	1837.58	3124.45	0.00	1413853.32	3214416.83	40.466871	-104.729360
	9200.00	89.81	90.17	6981.50	3465.70	1837.29	3224.45	0.00	1413853.88	3214516.83	40.466871	-104.729001
	9300.00	89.81	90.17	6981.84	3564.50	1837.00	3324.45	0.00	1413854.45	3214616.82	40.466870	-104.728641
	9400.00	89.81	90.17	6982.17	3663.30	1836.71	3424.45	0.00	1413855.02	3214716.81	40.466869	-104.728282
	9500.00	89.81	90.17	6982.50	3762.10	1836.42	3524.45	0.00	1413855.58	3214816.81	40.466868	-104.727922
	9600.00	89.81	90.17	6982.83	3860.90	1836.13	3624.45	0.00	1413856.15	3214916.80	40.466867	-104.727563
	9700.00	89.81	90.17	6983.16	3959.70	1835.84	3724.45	0.00	1413856.72	3215016.80	40.466866	-104.727204
	9800.00	89.81	90.17	6983.49	4058.50	1835.55	3824.44	0.00	1413857.28	3215116.79	40.466866	-104.726844
	9900.00	89.81	90.17	6983.82	4157.30	1835.26	3924.44	0.00	1413857.85	3215216.78	40.466865	-104.726485
	10000.00	89.81	90.17	6984.16	4256.10	1834.97	4024.44	0.00	1413858.42	3215316.78	40.466864	-104.726125
	10100.00	89.81	90.17	6984.49	4354.90	1834.68	4124.44	0.00	1413858.98	3215416.77	40.466863	-104.725766
	10200.00	89.81	90.17	6984.82	4453.70	1834.39	4224.44	0.00	1413859.55	3215516.77	40.466862	-104.725407
	10300.00	89.81	90.17	6985.15	4552.50	1834.10	4324.44	0.00	1413860.12	3215616.76	40.466861	-104.725047
	10400.00	89.81	90.17	6985.48	4651.29	1833.81	4424.44	0.00	1413860.68	3215716.75	40.466860	-104.724688
	10500.00	89.81	90.17	6985.81	4750.09	1833.52	4524.44	0.00	1413861.25	3215816.75	40.466860	-104.724328
	10600.00	89.81	90.17	6986.15	4848.89	1833.23	4624.44	0.00	1413861.82	3215916.74	40.466859	-104.723969
	10700.00	89.81	90.17	6986.48	4947.69	1832.94	4724.44	0.00	1413862.38	3216016.74	40.466858	-104.723610
	10800.00	89.81	90.17	6986.81	5046.49	1832.65	4824.44	0.00	1413862.95	3216116.73	40.466857	-104.723250
	10900.00	89.81	90.17	6987.14	5145.29	1832.36	4924.43	0.00	1413863.52	3216216.72	40.466856	-104.722891
	11000.00	89.81	90.17	6987.47	5244.09	1832.07	5024.43	0.00	1413864.08	3216316.72	40.466855	-104.722532
	11100.00	89.81	90.17	6987.80	5342.89	1831.78	5124.43	0.00	1413864.65	3216416.71	40.466855	-104.722172
	11200.00	89.81	90.17	6988.14	5441.69	1831.49	5224.43	0.00	1413865.22	3216516.71	40.466854	-104.721813
	11300.00	89.81	90.17	6988.47	5540.49	1831.20	5324.43	0.00	1413865.78	3216616.70	40.466853	-104.721453
	11400.00	89.81	90.17	6988.80	5639.29	1830.91	5424.43	0.00	1413866.35	3216716.69	40.466852	-104.721094
	11500.00	89.81	90.17	6989.13	5738.09	1830.62	5524.43	0.00	1413866.92	3216816.69	40.466851	-104.720735
	11600.00	89.81	90.17	6989.46	5836.89	1830.33	5624.43	0.00	1413867.48	3216916.68	40.466850	-104.720375
	11700.00	89.81	90.17	6989.79	5935.69	1830.04	5724.43	0.00	1413868.05	3217016.68	40.466849	-104.720016
	11800.00	89.81	90.17	6990.13	6034.49	1829.75	5824.43	0.00	1413868.62	3217116.67	40.466849	-104.719656
	11900.00	89.81	90.17	6990.46	6133.29	1829.46	5924.42	0.00	1413869.18	3217216.66	40.466848	-104.719297
	12000.00	89.81	90.17	6990.79	6232.09	1829.17	6024.42	0.00	1413869.75	3217316.66	40.466847	-104.718938
	12100.00	89.81	90.17	6991.12	6330.89	1828.88	6124.42	0.00	1413870.32	3217416.65	40.466846	-104.718578
12200.00	89.81	90.17	6991.45	6429.69	1828.59	6224.42	0.00	1413870.88	3217516.65	40.466845	-104.718219	
12300.00	89.81	90.17	6991.78	6528.48	1828.30	6324.42	0.00	1413871.45	3217616.64	40.466844	-104.717859	
12400.00	89.81	90.17	6992.12	6627.28	1828.01	6424.42	0.00	1413872.02	3217716.63	40.466843	-104.717500	
12500.00	89.81	90.17	6992.45	6726.08	1827.72	6524.42	0.00	1413872.58	3217816.63	40.466842	-104.717141	
12600.00	89.81	90.17	6992.78	6824.88	1827.44	6624.42	0.00	1413873.15	3217916.62	40.466842	-104.716781	
12700.00	89.81	90.17	6993.11	6923.68	1827.15	6724.42	0.00	1413873.72	3218016.62	40.466841	-104.716422	
12800.00	89.81	90.17	6993.44	7022.48	1826.86	6824.42	0.00	1413874.28	3218116.61	40.466840	-104.716062	
12900.00	89.81	90.17	6993.77	7121.28	1826.57	6924.41	0.00	1413874.85	3218216.60	40.466839	-104.715703	
13000.00	89.81	90.17	6994.10	7220.08	1826.28	7024.41	0.00	1413875.42	3218316.60	40.466838	-104.715344	
13100.00	89.81	90.17	6994.44	7318.88	1825.99	7124.41	0.00	1413875.98	3218416.59	40.466837	-104.714984	
13200.00	89.81	90.17	6994.77	7417.68	1825.70	7224.41	0.00	1413876.55	3218516.59	40.466836	-104.714625	
13300.00	89.81	90.17	6995.10	7516.48	1825.41	7324.41	0.00	1413877.12	3218616.58	40.466835	-104.714266	
13400.00	89.81	90.17	6995.43	7615.28	1825.12	7424.41	0.00	1413877.68	3218716.57	40.466835	-104.713906	
13500.00	89.81	90.17	6995.76	7714.08	1824.83	7524.41	0.00	1413878.25	3218816.57	40.466834	-104.713547	
13600.00	89.81	90.17	6996.09	7812.88	1824.54	7624.41	0.00	1413878.82	3218916.56	40.466833	-104.713187	
13700.00	89.81	90.17	6996.43	7911.68	1824.25	7724.41	0.00	1413879.38	3219016.56	40.466832	-104.712828	
13800.00	89.81	90.17	6996.76	8010.48	1823.96	78						

Comments	MD (ft)	Incl (°)	Azim True (°)	TVD (ft)	VSEC (ft)	NS (ft)	EW (ft)	DLS (°/100ft)	Northing (ftUS)	Easting (ftUS)	Latitude (°)	Longitude (°)
Seeley Federal 108-02N-19C-L BHL	17793.32	89.81	90.17	7010.00	11955.86	1812.39	11817.69	0.00	1413902.58	3223109.63	40.466795	-104.698117

Survey Type: Def Plan

Survey Error Model: ISCWSA Rev 0 \*\*\* 3-D 95.000% Confidence 2.7955 sigma

Survey Program:

Description	Part	MD From (ft)	MD To (ft)	EOU Freq (ft)	Hole Size (in)	Casing Diameter (in)	Expected Max Inclination (deg)	Survey Tool Type	Borehole / Survey
	1	0.000	4.000	1/100.000	13.500	9.625		NAL_MWD_IFR1-Depth Only	Original Hole / Seeley Federal 108-02N-19C-L R0 mdv 01Aug19
	1	4.000	1800.000	1/100.000	13.500	9.625		NAL_MWD_IFR1	Original Hole / Seeley Federal 108-02N-19C-L R0 mdv 01Aug19
	1	1800.000	17793.323	1/100.000	8.500	5.500		NAL_MWD_IFR1+MS	Original Hole / Seeley Federal 108-02N-19C-L R0 mdv 01Aug19