

Inspection Photos

08/08/2019

Operator: FOUNDATION ENERGY
MANAGEMENT LLC - 10112

Location ID: 447523
Weld County, CO

Aaron Trujillo
NE Reclamation Specialist
COGCC

Inspection Photos

Operator Name: FOUNDATION ENERGY MANAGEMENT LLC - 10112

Location ID: 447523



Photo 1: Photo taken from the southwest end of the location, facing east. Photo shows overview of the location. Photo also shows equipment/facilities remaining. Unable to find evidence of final reclamation activities.



Photo 2: Photo taken from the southwest end of the location, facing north. Photo shows overview of the location. Photo also shows equipment/facilities remaining. Unable to find evidence of final reclamation activities.



COLORADO
Oil & Gas Conservation
Commission
Department of Natural Resources

Inspection Photos

Operator Name: FOUNDATION ENERGY MANAGEMENT LLC - 10112

Location ID: 447523



Photo 3: Photo taken from the southwest end of the location. Photo shows Diffuse Knapweed (Plants with white flowers in photo) remains established on the location. Sufficient and on-going weed management does not appear to be occurring.



Photo 4: See comments under photo 3.



COLORADO
Oil & Gas Conservation
Commission
Department of Natural Resources

Inspection Photos

Operator Name: FOUNDATION ENERGY MANAGEMENT LLC - 10112

Location ID: 447523



Photo 5: See comments under photo 3.



Photo 6: Photo taken from the south end of the location, facing east. Photo shows equipment/facilities remaining, and Diffuse Knapweed (Plants with white flowers in photo) remains established on the location

Inspection Photos

Operator Name: FOUNDATION ENERGY MANAGEMENT LLC - 10112

Location ID: 447523



Photo 7: Photo taken from the east end of the location , facing west. Photo shows equipment/facilities remaining, and Diffuse Knapweed (Plants with white flowers in photo) remains established on the location



Photo 8: Photo taken from the south end of the location, facing west. Photo of risers/equipment remaining on location.



COLORADO
Oil & Gas Conservation
Commission
Department of Natural Resources

Inspection Photos

Operator Name: FOUNDATION ENERGY MANAGEMENT LLC - 10112

Location ID: 447523



Photo 9: Photo taken from the south end of the location, facing east. Photo of risers/equipment remaining on location.



Photo 10: Photo taken from the south end of the location, facing north. Photo of equipment remaining on location.

Inspection Photos

Operator Name: FOUNDATION ENERGY MANAGEMENT LLC - 10112

Location ID: 447523



Photo 11: Photo taken from the tank (photo 10) on the southeast end of the location. Diffuse Knapweed (Plants with white flowers in photo) remains established on the location. Photo also shows stained soil due to chemical discharge from the tank



Photo 12: Photo taken from the perimeter fence line on the east end of the location. Photo shows Diffuse Knapweed has continued to establish on the location (left of fence) and has continued to spread onto the adjacent lands (right). Operator has failed to conduct sufficient and on going weed management on location and adjacent lands.

Inspection Photos

Operator Name: FOUNDATION ENERGY MANAGEMENT LLC - 10112

Location ID: 447523



Photo 13: Photo taken from the east end of the location , facing north. Photo shows equipment/facilities remaining, and Diffuse Knapweed (Plants with white flowers in photo) remains established on the location



Photo 14: Photo taken from the east end of the location, facing northwest. Photo shows equipment/facilities remaining, and Diffuse Knapweed (Plants with white flowers in photo) remains established on the location



COLORADO
Oil & Gas Conservation
Commission
Department of Natural Resources

Inspection Photos

Operator Name: FOUNDATION ENERGY MANAGEMENT LLC - 10112

Location ID: 447523



Photo 13: Photo taken from the east end of the location, facing west. Photo shows equipment/facilities remaining, and Diffuse Knapweed (Plants with white flowers in photo) remains established on the location



Photo 14: Photo taken from the adjacent lands east of the location facing southwest. Photo shows noxious weeds have not been managed and continues to spread from the location.

Inspection Photos

Operator Name: FOUNDATION ENERGY MANAGEMENT LLC - 10112

Location ID: 447523



Photo 19: Photo taken from the adjacent lands east of the location facing west. Photo shows noxious weeds have not been managed and continues to spread from the location.



Photo 20: Photo taken from the adjacent lands east of the location facing northwest. Photo shows noxious weeds have not been managed and continues to spread from the location.

Inspection Photos

Operator Name: FOUNDATION ENERGY MANAGEMENT LLC - 10112

Location ID: 447523

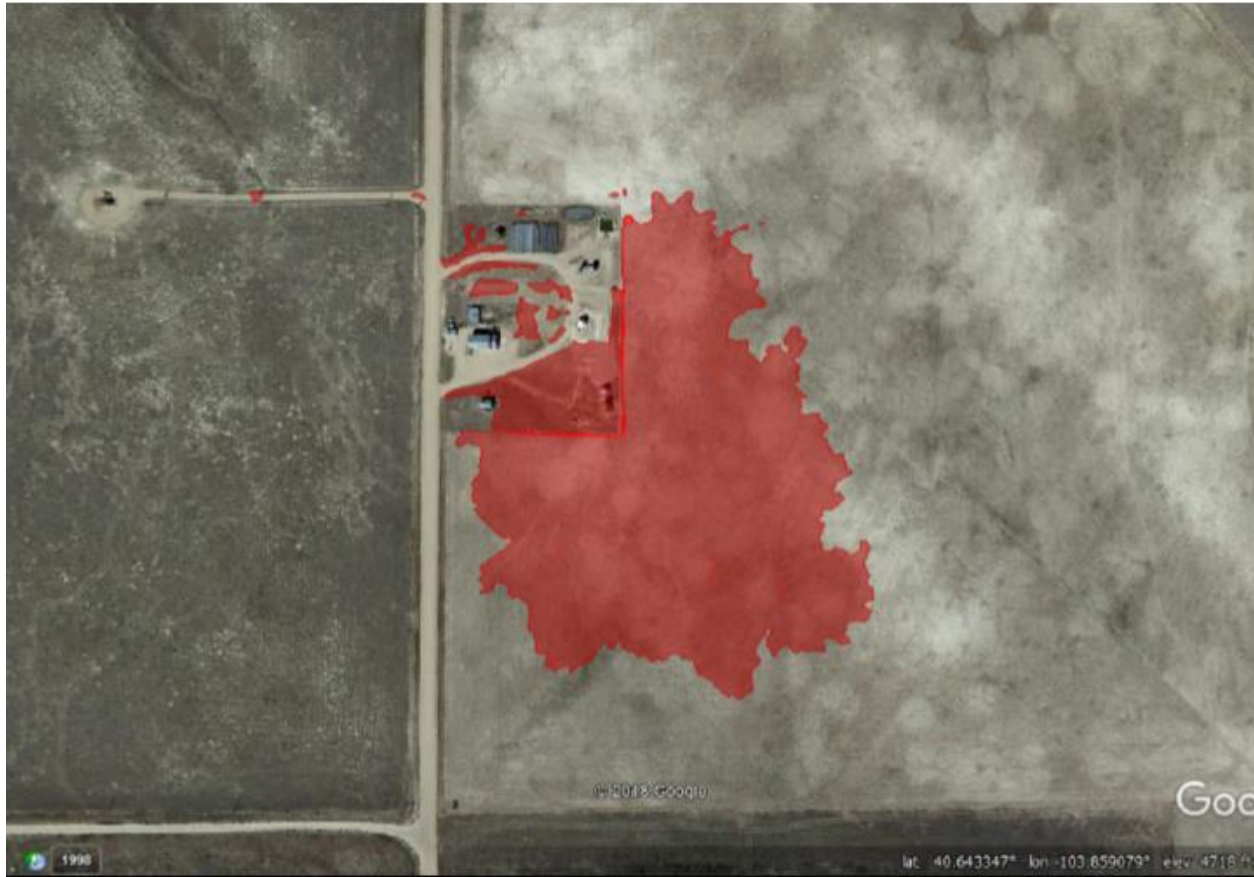


Photo 21: Photo from documentation within previous inspection. Photo shows areas where Diffuse Knapweed was mapped on the location and the adjacent lands. Diffuse Knapweed has continued to spread throughout the location and adjacent lands.

