



00694115

DUAL INDUCTION FOCUSED LOG  
GAMMA RAY

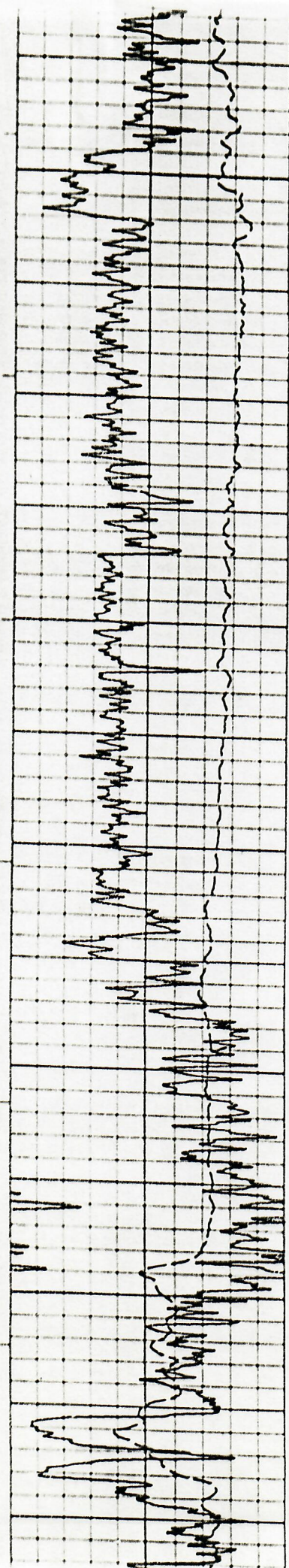
FILE NO.	COMPANY	TUHILL & BARBEE
API NO.	WELL	HOFFMAN NO. 1-31
	FIELD	SOUTHERST LAMAR
	COUNTY	PROHERS State COLO.
Location: 1328' FEL & 740' FSL (116)		
Soc 31 TWP 24S R06 43W		
OTHER SERVICES COLC-CN-CR MINILOG-CR PROLOG		
PERMANENT DATUM	GROUND LEVEL	ELEV. 3856
LOGGING MEASURED FROM	K. B. 8	FT. ABOVE P.D.
DRILLING MEASURED FROM	K. B.	RECEIVED
DATE	1-15-84	
RUN	1	
SERVICE ORDER	32328	PP191984
DEPTH-DRILLER	5300	
DEPTH-LOGGER	5300	
BOTTOM LOGGED INTERVAL	5244	5300
TOP LOGGED INTERVAL	430	
CASING - DRILLER	8 5/8	8 430
CASING - LOGGER	430	
BIT SIZE	7 7/8	
TYPE FLUID IN HOLE	DENICOL	40
DENSITY AND VISCOSITY	9.0	8.0
PM AND FLUID LOSS	9.5	8.0
SOURCE OF SAMPLE	FLOWLINE	
RM AT MEMS. TEMP.	1.27	8 60
RM AT MEMS. TEMP.	.953	8 60
RM AT MEMS. TEMP.	1.52	8 60
SOURCE OF RMF / RMC	MEASURED	MEASURED
RM AT BHT	.391	8 129
TIME SINCE CIRCULATION	4 HOURS	
MAX. REC. TEMP. DEG. F	124	
EQUIP. NO. / LOG	HL 6243	WOODWARD
RECORDED BY	STEVEN HEIKKILA	
WITNESSED BY	UNNY DANIEL	

FOLD HERE

BEST IMAGE  
AVAILABLE

IN MAKING INTERPRETATIONS OF LOGS OUR EMPLOYEES WILL GIVE CUSTOMER THE BENEFIT OF THEIR BEST JUDGEMENT. BUT SINCE ALL INTERPRETATIONS ARE OPINIONS BASED ON INFERENCES FROM ELECTRICAL OR OTHER MEASUREMENTS, WE CANNOT AND WE DO NOT GUARANTEE THE ACCURACY OR CORRECTNESS OF ANY INTERPRETATION. WE SHALL NOT BE LIABLE OR RESPONSIBLE FOR ANY LOSS, COST, DAMAGE OR EXPENSE WHATSOEVER INCURRED OR SUSTAINED BY THE CUSTOMER RESULTING FROM ANY INTERPRETATION MADE BY ANY OF OUR EMPLOYEES.

REMARKS RUN ( 1 )



00600

00700

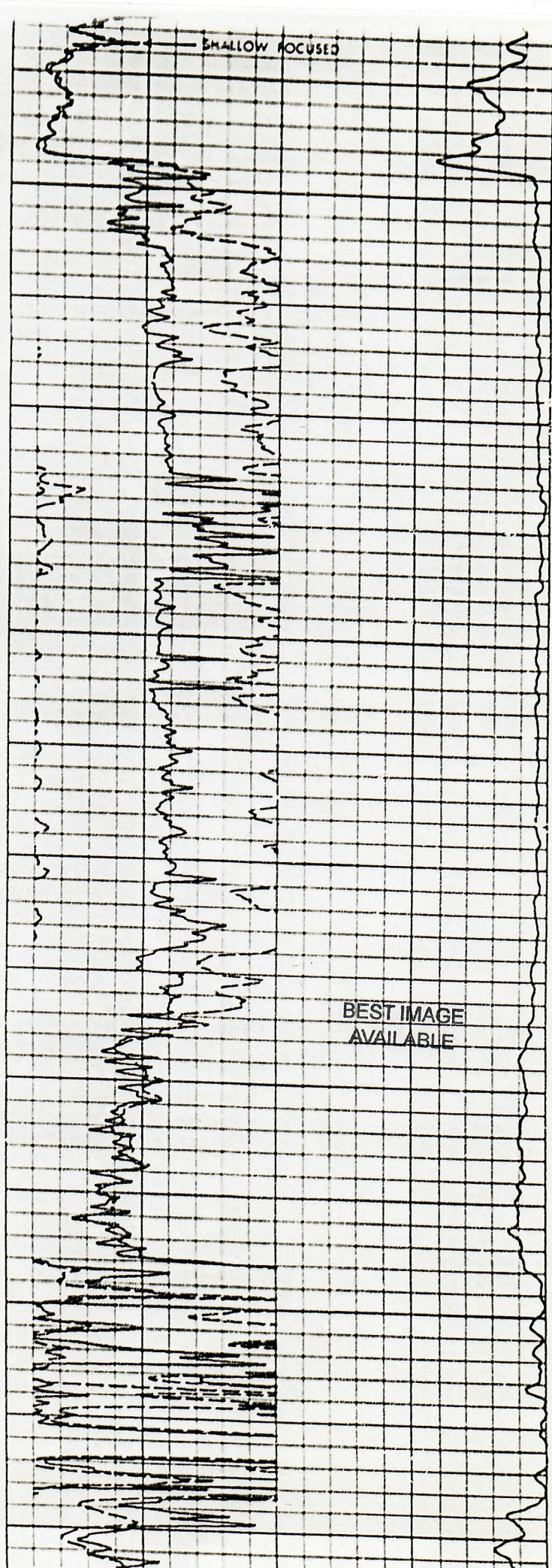
00800

00900

01000

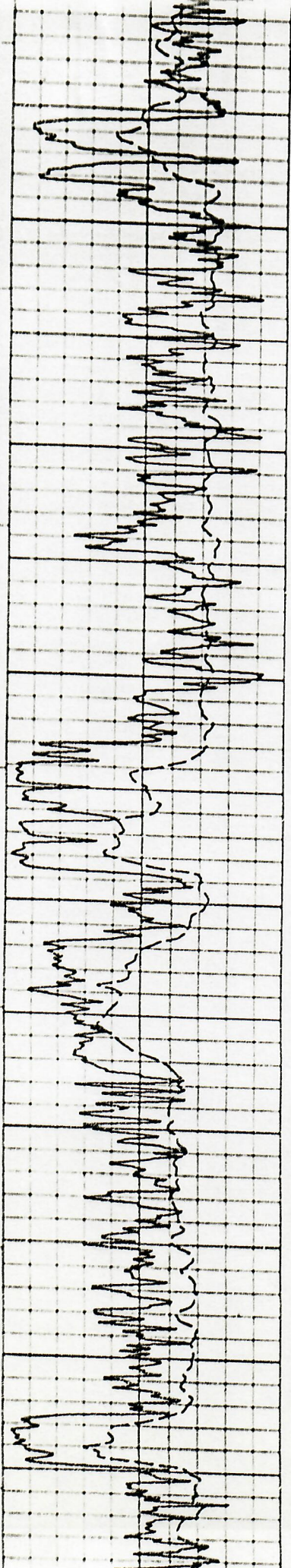
01100

01200



SHALLOW FOCUSED

BEST IMAGE  
AVAILABLE



100 01200 01300 01400 01500 01600 01700

