



APPROVED

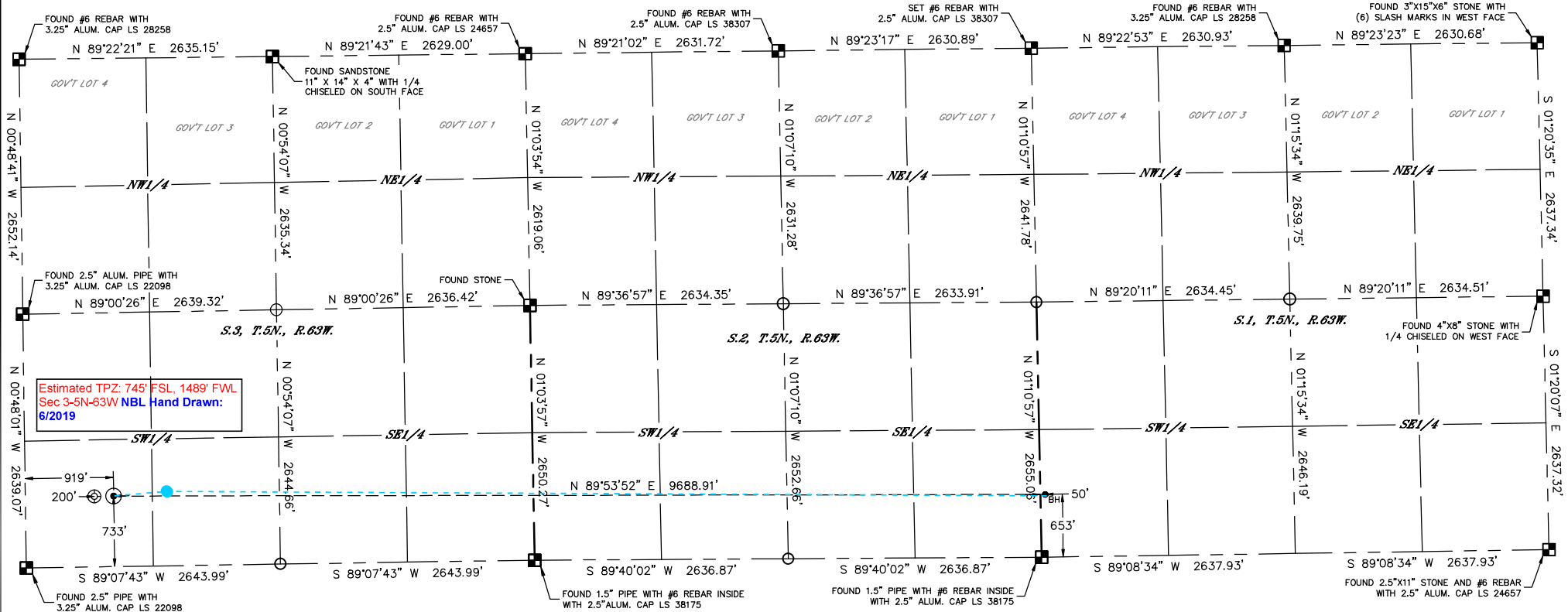
By Jacob Eicher at 4:41 pm, Jun 13, 2019

Lat40, Inc. 6250 W. 10th Street, Unit 2, Greeley, CO 970-515-5294

WELL LOCATION CERTIFICATE

WELLS RANCH STATE BB03-620

SECTION: 3
TOWNSHIP: 5N
RANGE: 63W
6TH. P.M.
WELD COUNTY, CO



CLIENT: NOBLE ENERGY, INC.				LANDMAN: GREG WILSON			
INSTRUMENT OPERATOR: JAKE STILLE				SURVEY DATE: 11/8/2017			
SURFACE USE: RANGELAND							
SHL FOOTAGE	SHL LAT°	SHL LONG°	SHL PDOP	SHL ELEV (FT.)	SHL 1/4/1/4	SHL S-T-R	
733	FSL 919	FWL 40.42316	-104.42923	2.2	4714	SWSW	3-5-63

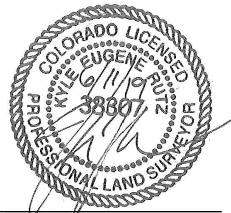
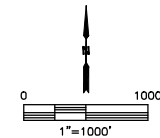
BHL FOOTAGE	BHL LAT°	BHL LONG°	BHL S-T-R
653	FSL 50	FWL 40.42288	-104.39444
			1-5-63

NOTE:

- 1) Bearings shown are Grid Bearings of the Colorado State Plane Coordinate System, North Zone, North American Datum 1983. The lineal dimensions as contained herein are based upon the "U.S. Survey Foot."
- 2) Distances to section lines measured at 90 degrees from said section lines.
- 3) Ground elevations are based on an observed GPS elevation (NAVD 1988 DATUM).
- 4) Latitude and Longitude shown are (NAD 83 DATUM).
- 5) IMPROVEMENTS: See LOCATION DRAWING for all visible improvements within 500' of oil and gas location.
- 6) This map does not represent a boundary survey.

LEGEND

- = ALIQUOT MONUMENT AS DESCRIBED
- = CALCULATED POSITION
- = SURFACE HOLE LOCATION (SHL)
- ▲ = ENTRY POINT LOCATION (EP)
- = BOTTOM HOLE LOCATION (BHL)
- ⊙ = EXISTING WELL
- ⊙ = ABANDONED WELL



Kyle E. Rutz—On behalf of Lat40, Inc.
Colorado Licensed Professional DATE: 6/11/2019
Land Surveyor No. 38307 PROJECT#: 2017093