

SRC ENERGY

WELD COUNTY (NAD83, TRUE NORTH)

5N-66W-05 VOLT 19-5 PAD

VOLT 33C-6-M

Wellbore #1

Plan: Design #1

Standard Planning Report

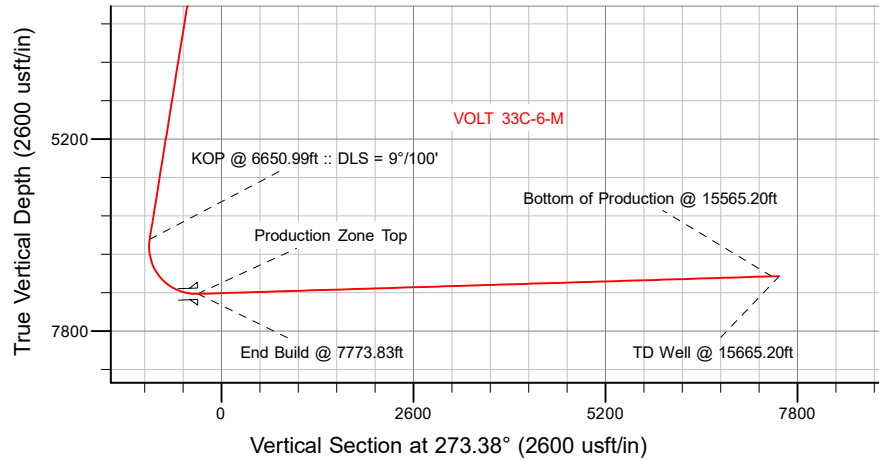
18 November, 2018

Project: WELD COUNTY (NAD83, TRUE NORTH)
Site: 5N-66W-05 VOLT 19-5 PAD
Well: VOLT 33C-6-M
Wellbore: Wellbore #1
Design: Design #1

SRC ENERGY

CASING DETAILS

TVD	MD	Name
1800.00	1818.71	9 5/8"
7297.00	7773.83	Production Zone Top



SECTION DETAILS

Sec	MD	Inc	Azi	TVD	+N/-S	+E/-W	Dleg	TFace	Vsect	Target
1	0.00	0.00	0.00	0.00	0.00	0.00	0.00	0.00	0.00	
2	250.00	0.00	0.00	250.00	0.00	0.00	0.00	0.00	0.00	
3	749.00	9.98	69.21	746.48	15.39	40.53	2.00	69.21	-39.55	
4	6650.99	9.98	69.21	6559.16	378.44	996.77	0.00	0.00	-972.73	
5	7773.83	91.74	270.13	7297.00	427.69	349.33	9.00	-158.68	-323.51	
6	15565.20	91.74	270.13	7060.00	444.84	-7438.41	0.00	0.00	7451.70	VOLT 33C-6-M_BPZ
7	15665.20	91.74	270.13	7056.96	445.07	-7538.36	0.00	0.00	7551.49	

WELLBORE TARGET DETAILS (LAT/LONG)

Name	TVD	+N/-S	+E/-W	Latitude	Longitude
VOLT 33C-6-M_SHL	0.00	0.00	0.00	40.424553	-104.805211
VOLT 33C-6-M_BHL	7056.96	445.07	-7538.36	40.425772	-104.832288
VOLT 33C-6-M_BPZ	7060.00	444.84	-7438.41	40.425771	-104.831929

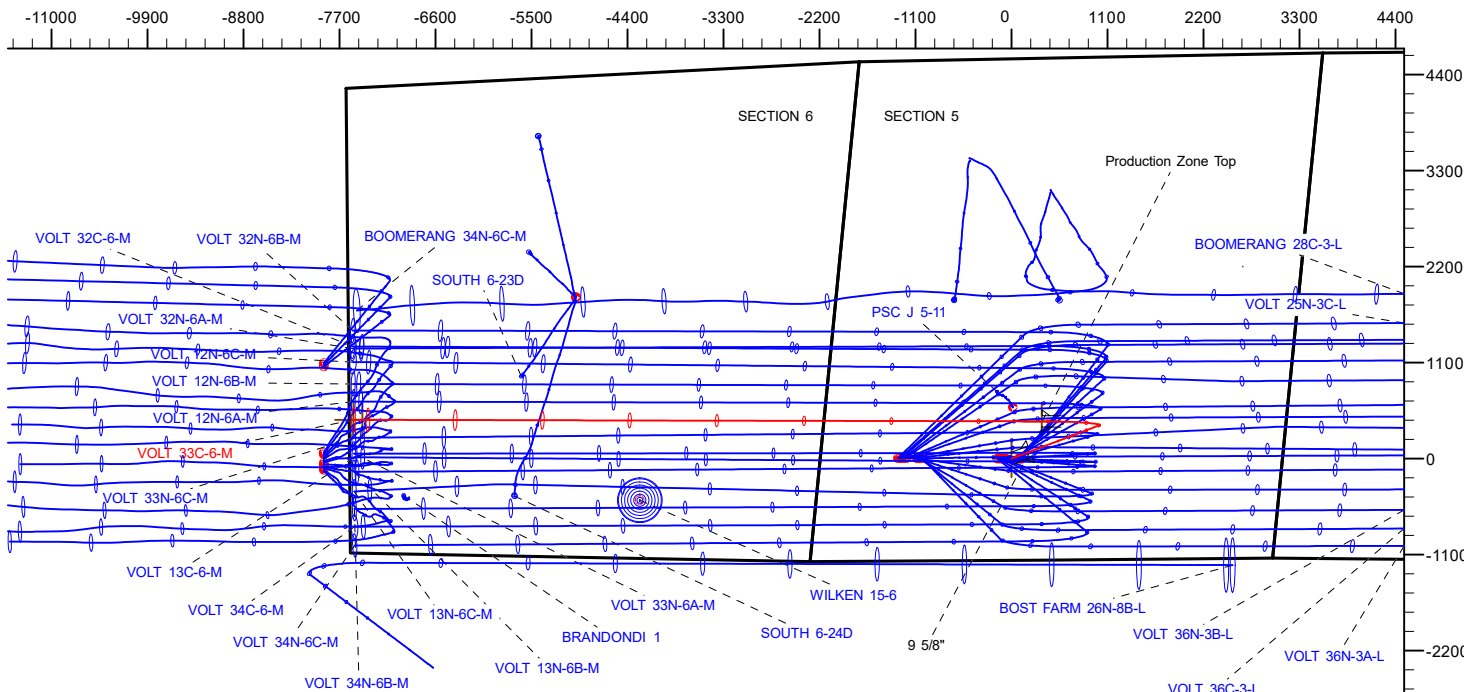
SHL
1165' FSL
2182' FWL

LP
1590' FSL
2487' FWL
40.425727° Lat
-104.803958° Long

BPZ
1528' FSL
150' FWL

BHL
1527' FSL
50' FWL

West(-)/East(+) (2200 usft/in)



WELL DETAILS: VOLT 33C-6-M

GL = 4813'
RKB = 4' @ 4817.00usft (IKON 12)

Plan: Design #1 (VOLT 33C-6-M/Wellbore #1)

Date: 11/18/2018

T Azimuths to True North
M Magnetic North: 8.09°

Magnetic Field
Strength: 52243.7snT
Dip Angle: 66.83°
Date: 11/2/2018
Model: IGRF2015

Hewlett-Packard

Planning Report

Database:	EDM 5000.14 Single User Db	Local Co-ordinate Reference:	Well VOLT 33C-6-M
Company:	SRC ENERGY	TVD Reference:	RKB = 4' @ 4817.00usft (IKON 12)
Project:	WELD COUNTY (NAD83, TRUE NORTH)	MD Reference:	RKB = 4' @ 4817.00usft (IKON 12)
Site:	5N-66W-05 VOLT 19-5 PAD	North Reference:	True
Well:	VOLT 33C-6-M	Survey Calculation Method:	Minimum Curvature
Wellbore:	Wellbore #1		
Design:	Design #1		

Project	WELD COUNTY (NAD83, TRUE NORTH)		
Map System:	US State Plane 1983	System Datum:	Mean Sea Level
Geo Datum:	North American Datum 1983		
Map Zone:	Colorado Northern Zone		

Site		5N-66W-05 VOLT 19-5 PAD			
Site Position:		Northing:	1,398,257.75 usft	Latitude:	40.424567
From:	Lat/Long	Easting:	3,192,134.26 usft	Longitude:	-104.809879
Position Uncertainty:	0.00 usft	Slot Radius:	13-3/16 "	Grid Convergence:	0.45 °

Well	VOLT 33C-6-M					
Well Position	+N/-S	-5.07 usft	Northing:	1,398,262.80 usft	Latitude:	40.424553
	+E/-W	1,299.62 usft	Easting:	3,193,433.87 usft	Longitude:	-104.805211
Position Uncertainty		3.28 usft	Wellhead Elevation:		Ground Level:	4,813.00 usft

Wellbore	Wellbore #1				
Magnetics	Model Name	Sample Date	Declination (°)	Dip Angle (°)	Field Strength (nT)
	IGRF2015	11/2/2018	8.09	66.83	52,243.74841013

Design	Design #1				
Audit Notes:					
Version:		Phase:	PLAN	Tie On Depth:	0.00
Vertical Section:	Depth From (TVD) (usft)	+N/-S (usft)	+E/-W (usft)	Direction (°)	
	0.00	0.00	0.00	273.38	

Plan Survey Tool Program	Date	11/18/2018			
Depth From (usft)	Depth To (usft)	Survey (Wellbore)	Tool Name	Remarks	
1	0.00	1,800.00	Design #1 (Wellbore #1)	SRC Energy_ISCWSA REV 2	
				Fixed:v2:crustal field declinatio	
2	1,800.00	15,665.20	Design #1 (Wellbore #1)	SRC Energy_ISCWSA REV 2	
				Fixed:v2:Rockies, crustal dec +	

Hewlett-Packard

Planning Report

Database:	EDM 5000.14 Single User Db	Local Co-ordinate Reference:	Well VOLT 33C-6-M
Company:	SRC ENERGY	TVD Reference:	RKB = 4' @ 4817.00usft (IKON 12)
Project:	WELD COUNTY (NAD83, TRUE NORTH)	MD Reference:	RKB = 4' @ 4817.00usft (IKON 12)
Site:	5N-66W-05 VOLT 19-5 PAD	North Reference:	True
Well:	VOLT 33C-6-M	Survey Calculation Method:	Minimum Curvature
Wellbore:	Wellbore #1		
Design:	Design #1		

Plan Sections										
Measured Depth (usft)	Inclination (°)	Azimuth (°)	Vertical Depth (usft)	+N/-S (usft)	+E/-W (usft)	Dogleg Rate (°/100usft)	Build Rate (°/100usft)	Turn Rate (°/100usft)	TFO (°)	Target
0.00	0.00	0.00	0.00	0.00	0.00	0.00	0.00	0.00	0.00	
250.00	0.00	0.00	250.00	0.00	0.00	0.00	0.00	0.00	0.00	
749.00	9.98	69.21	746.48	15.39	40.53	2.00	2.00	0.00	69.21	
6,650.99	9.98	69.21	6,559.16	378.44	996.77	0.00	0.00	0.00	0.00	
7,773.83	91.74	270.13	7,297.00	427.69	349.33	9.00	7.28	-14.17	-158.68	
15,565.20	91.74	270.13	7,060.00	444.84	-7,438.41	0.00	0.00	0.00	0.00	VOLT 33C-6-M_BPZ
15,665.20	91.74	270.13	7,056.96	445.07	-7,538.36	0.00	0.00	0.00	0.00	

Hewlett-Packard

Planning Report

Database:	EDM 5000.14 Single User Db	Local Co-ordinate Reference:	Well VOLT 33C-6-M
Company:	SRC ENERGY	TVD Reference:	RKB = 4' @ 4817.00usft (IKON 12)
Project:	WELD COUNTY (NAD83, TRUE NORTH)	MD Reference:	RKB = 4' @ 4817.00usft (IKON 12)
Site:	5N-66W-05 VOLT 19-5 PAD	North Reference:	True
Well:	VOLT 33C-6-M	Survey Calculation Method:	Minimum Curvature
Wellbore:	Wellbore #1		
Design:	Design #1		

Planned Survey									
Measured Depth (usft)	Inclination (°)	Azimuth (°)	Vertical Depth (usft)	+N/-S (usft)	+E/-W (usft)	Vertical Section (usft)	Dogleg Rate (°/100usft)	Build Rate (°/100usft)	Turn Rate (°/100usft)
0.00	0.00	0.00	0.00	0.00	0.00	0.00	0.00	0.00	0.00
100.00	0.00	0.00	100.00	0.00	0.00	0.00	0.00	0.00	0.00
200.00	0.00	0.00	200.00	0.00	0.00	0.00	0.00	0.00	0.00
250.00	0.00	0.00	250.00	0.00	0.00	0.00	0.00	0.00	0.00
Begin Nudge @ 250.00ft									
300.00	1.00	69.21	300.00	0.15	0.41	-0.40	2.00	2.00	0.00
400.00	3.00	69.21	399.93	1.39	3.67	-3.58	2.00	2.00	0.00
500.00	5.00	69.21	499.68	3.87	10.19	-9.95	2.00	2.00	0.00
600.00	7.00	69.21	599.13	7.58	19.96	-19.48	2.00	2.00	0.00
700.00	9.00	69.21	698.15	12.52	32.97	-32.18	2.00	2.00	0.00
749.00	9.98	69.21	746.48	15.39	40.53	-39.55	2.00	2.00	0.00
Hold Tangent @ 749.00ft									
800.00	9.98	69.21	796.71	18.52	48.79	-47.61	0.00	0.00	0.00
900.00	9.98	69.21	895.20	24.68	64.99	-63.42	0.00	0.00	0.00
1,000.00	9.98	69.21	993.68	30.83	81.19	-79.24	0.00	0.00	0.00
1,100.00	9.98	69.21	1,092.17	36.98	97.40	-95.05	0.00	0.00	0.00
1,200.00	9.98	69.21	1,190.66	43.13	113.60	-110.86	0.00	0.00	0.00
1,300.00	9.98	69.21	1,289.14	49.28	129.80	-126.67	0.00	0.00	0.00
1,400.00	9.98	69.21	1,387.63	55.43	146.00	-142.48	0.00	0.00	0.00
1,500.00	9.98	69.21	1,486.12	61.58	162.20	-158.29	0.00	0.00	0.00
1,600.00	9.98	69.21	1,584.60	67.73	178.41	-174.10	0.00	0.00	0.00
1,700.00	9.98	69.21	1,683.09	73.89	194.61	-189.91	0.00	0.00	0.00
1,800.00	9.98	69.21	1,781.58	80.04	210.81	-205.73	0.00	0.00	0.00
1,818.71	9.98	69.21	1,800.00	81.19	213.84	-208.68	0.00	0.00	0.00
9 5/8"									
1,900.00	9.98	69.21	1,880.06	86.19	227.01	-221.54	0.00	0.00	0.00
2,000.00	9.98	69.21	1,978.55	92.34	243.21	-237.35	0.00	0.00	0.00
2,100.00	9.98	69.21	2,077.04	98.49	259.42	-253.16	0.00	0.00	0.00
2,200.00	9.98	69.21	2,175.52	104.64	275.62	-268.97	0.00	0.00	0.00
2,300.00	9.98	69.21	2,274.01	110.79	291.82	-284.78	0.00	0.00	0.00
2,400.00	9.98	69.21	2,372.50	116.94	308.02	-300.59	0.00	0.00	0.00
2,500.00	9.98	69.21	2,470.99	123.10	324.22	-316.41	0.00	0.00	0.00
2,600.00	9.98	69.21	2,569.47	129.25	340.43	-332.22	0.00	0.00	0.00
2,700.00	9.98	69.21	2,667.96	135.40	356.63	-348.03	0.00	0.00	0.00
2,800.00	9.98	69.21	2,766.45	141.55	372.83	-363.84	0.00	0.00	0.00
2,900.00	9.98	69.21	2,864.93	147.70	389.03	-379.65	0.00	0.00	0.00
3,000.00	9.98	69.21	2,963.42	153.85	405.23	-395.46	0.00	0.00	0.00
3,100.00	9.98	69.21	3,061.91	160.00	421.44	-411.27	0.00	0.00	0.00
3,200.00	9.98	69.21	3,160.39	166.16	437.64	-427.08	0.00	0.00	0.00
3,300.00	9.98	69.21	3,258.88	172.31	453.84	-442.90	0.00	0.00	0.00
3,400.00	9.98	69.21	3,357.37	178.46	470.04	-458.71	0.00	0.00	0.00
3,500.00	9.98	69.21	3,455.85	184.61	486.24	-474.52	0.00	0.00	0.00
3,600.00	9.98	69.21	3,554.34	190.76	502.45	-490.33	0.00	0.00	0.00
3,700.00	9.98	69.21	3,652.83	196.91	518.65	-506.14	0.00	0.00	0.00
3,800.00	9.98	69.21	3,751.31	203.06	534.85	-521.95	0.00	0.00	0.00
3,900.00	9.98	69.21	3,849.80	209.21	551.05	-537.76	0.00	0.00	0.00
4,000.00	9.98	69.21	3,948.29	215.37	567.25	-553.57	0.00	0.00	0.00
4,100.00	9.98	69.21	4,046.77	221.52	583.46	-569.39	0.00	0.00	0.00
4,200.00	9.98	69.21	4,145.26	227.67	599.66	-585.20	0.00	0.00	0.00
4,300.00	9.98	69.21	4,243.75	233.82	615.86	-601.01	0.00	0.00	0.00
4,400.00	9.98	69.21	4,342.23	239.97	632.06	-616.82	0.00	0.00	0.00
4,500.00	9.98	69.21	4,440.72	246.12	648.26	-632.63	0.00	0.00	0.00
4,600.00	9.98	69.21	4,539.21	252.27	664.47	-648.44	0.00	0.00	0.00

Hewlett-Packard

Planning Report

Database:	EDM 5000.14 Single User Db	Local Co-ordinate Reference:	Well VOLT 33C-6-M
Company:	SRC ENERGY	TVD Reference:	RKB = 4' @ 4817.00usft (IKON 12)
Project:	WELD COUNTY (NAD83, TRUE NORTH)	MD Reference:	RKB = 4' @ 4817.00usft (IKON 12)
Site:	5N-66W-05 VOLT 19-5 PAD	North Reference:	True
Well:	VOLT 33C-6-M	Survey Calculation Method:	Minimum Curvature
Wellbore:	Wellbore #1		
Design:	Design #1		

Planned Survey									
Measured Depth (usft)	Inclination (°)	Azimuth (°)	Vertical Depth (usft)	+N/-S (usft)	+E/-W (usft)	Vertical Section (usft)	Dogleg Rate (°/100usft)	Build Rate (°/100usft)	Turn Rate (°/100usft)
4,700.00	9.98	69.21	4,637.70	258.43	680.67	-664.25	0.00	0.00	0.00
4,800.00	9.98	69.21	4,736.18	264.58	696.87	-680.07	0.00	0.00	0.00
4,900.00	9.98	69.21	4,834.67	270.73	713.07	-695.88	0.00	0.00	0.00
5,000.00	9.98	69.21	4,933.16	276.88	729.27	-711.69	0.00	0.00	0.00
5,100.00	9.98	69.21	5,031.64	283.03	745.48	-727.50	0.00	0.00	0.00
5,200.00	9.98	69.21	5,130.13	289.18	761.68	-743.31	0.00	0.00	0.00
5,300.00	9.98	69.21	5,228.62	295.33	777.88	-759.12	0.00	0.00	0.00
5,400.00	9.98	69.21	5,327.10	301.48	794.08	-774.93	0.00	0.00	0.00
5,500.00	9.98	69.21	5,425.59	307.64	810.28	-790.74	0.00	0.00	0.00
5,600.00	9.98	69.21	5,524.08	313.79	826.49	-806.56	0.00	0.00	0.00
5,700.00	9.98	69.21	5,622.56	319.94	842.69	-822.37	0.00	0.00	0.00
5,800.00	9.98	69.21	5,721.05	326.09	858.89	-838.18	0.00	0.00	0.00
5,900.00	9.98	69.21	5,819.54	332.24	875.09	-853.99	0.00	0.00	0.00
6,000.00	9.98	69.21	5,918.02	338.39	891.29	-869.80	0.00	0.00	0.00
6,100.00	9.98	69.21	6,016.51	344.54	907.50	-885.61	0.00	0.00	0.00
6,200.00	9.98	69.21	6,115.00	350.70	923.70	-901.42	0.00	0.00	0.00
6,300.00	9.98	69.21	6,213.48	356.85	939.90	-917.23	0.00	0.00	0.00
6,400.00	9.98	69.21	6,311.97	363.00	956.10	-933.05	0.00	0.00	0.00
6,500.00	9.98	69.21	6,410.46	369.15	972.30	-948.86	0.00	0.00	0.00
6,600.00	9.98	69.21	6,508.95	375.30	988.51	-964.67	0.00	0.00	0.00
6,650.99	9.98	69.21	6,559.16	378.44	996.77	-972.73	0.00	0.00	0.00
KOP @ 6650.99ft :: DLS = 9°/100'									
6,700.00	6.08	53.91	6,607.69	381.48	1,002.84	-978.61	9.00	-7.95	-31.21
6,800.00	5.46	311.54	6,707.39	387.77	1,003.56	-978.96	9.00	-0.62	-102.37
6,900.00	13.58	285.39	6,805.96	394.05	988.65	-963.70	9.00	8.12	-26.16
7,000.00	22.38	279.06	6,900.99	400.18	958.46	-933.21	9.00	8.80	-6.33
7,100.00	31.29	276.20	6,990.14	405.99	913.75	-888.24	9.00	8.91	-2.86
7,200.00	40.24	274.52	7,071.20	411.35	855.62	-829.89	9.00	8.95	-1.68
7,300.00	49.20	273.36	7,142.19	416.12	785.49	-759.60	9.00	8.96	-1.16
7,400.00	58.17	272.48	7,201.35	420.19	705.10	-679.11	9.00	8.97	-0.88
7,500.00	67.15	271.76	7,247.23	423.45	616.42	-590.40	9.00	8.98	-0.72
7,600.00	76.13	271.13	7,278.70	425.83	521.64	-495.64	9.00	8.98	-0.63
7,700.00	85.11	270.55	7,294.98	427.26	423.09	-397.17	9.00	8.98	-0.58
7,773.83	91.74	270.13	7,297.00	427.69	349.33	-323.52	9.00	8.98	-0.57
End Build @ 7773.83ft - Production Zone Top									
7,800.00	91.74	270.13	7,296.21	427.75	323.17	-297.40	0.00	0.00	0.00
7,900.00	91.74	270.13	7,293.16	427.97	223.22	-197.61	0.00	0.00	0.00
8,000.00	91.74	270.13	7,290.12	428.19	123.27	-97.82	0.00	0.00	0.00
8,100.00	91.74	270.13	7,287.08	428.41	23.31	1.98	0.00	0.00	0.00
8,200.00	91.74	270.13	7,284.04	428.63	-76.64	101.77	0.00	0.00	0.00
8,300.00	91.74	270.13	7,281.00	428.85	-176.59	201.56	0.00	0.00	0.00
8,400.00	91.74	270.13	7,277.95	429.07	-276.55	301.36	0.00	0.00	0.00
8,500.00	91.74	270.13	7,274.91	429.29	-376.50	401.15	0.00	0.00	0.00
8,600.00	91.74	270.13	7,271.87	429.51	-476.45	500.94	0.00	0.00	0.00
8,700.00	91.74	270.13	7,268.83	429.73	-576.41	600.73	0.00	0.00	0.00
8,800.00	91.74	270.13	7,265.79	429.95	-676.36	700.53	0.00	0.00	0.00
8,900.00	91.74	270.13	7,262.75	430.17	-776.32	800.32	0.00	0.00	0.00
9,000.00	91.74	270.13	7,259.70	430.39	-876.27	900.11	0.00	0.00	0.00
9,100.00	91.74	270.13	7,256.66	430.61	-976.22	999.90	0.00	0.00	0.00
9,200.00	91.74	270.13	7,253.62	430.83	-1,076.18	1,099.70	0.00	0.00	0.00
9,300.00	91.74	270.13	7,250.58	431.05	-1,176.13	1,199.49	0.00	0.00	0.00
9,400.00	91.74	270.13	7,247.54	431.27	-1,276.08	1,299.28	0.00	0.00	0.00
9,500.00	91.74	270.13	7,244.49	431.49	-1,376.04	1,399.08	0.00	0.00	0.00
9,600.00	91.74	270.13	7,241.45	431.71	-1,475.99	1,498.87	0.00	0.00	0.00

Hewlett-Packard

Planning Report

Database:	EDM 5000.14 Single User Db	Local Co-ordinate Reference:	Well VOLT 33C-6-M
Company:	SRC ENERGY	TVD Reference:	RKB = 4' @ 4817.00usft (IKON 12)
Project:	WELD COUNTY (NAD83, TRUE NORTH)	MD Reference:	RKB = 4' @ 4817.00usft (IKON 12)
Site:	5N-66W-05 VOLT 19-5 PAD	North Reference:	True
Well:	VOLT 33C-6-M	Survey Calculation Method:	Minimum Curvature
Wellbore:	Wellbore #1		
Design:	Design #1		

Planned Survey										
Measured Depth (usft)	Inclination (°)	Azimuth (°)	Vertical Depth (usft)	+N/-S (usft)	+E/-W (usft)	Vertical Section (usft)	Dogleg Rate (°/100usft)	Build Rate (°/100usft)	Turn Rate (°/100usft)	
9,700.00	91.74	270.13	7,238.41	431.93	-1,575.94	1,598.66	0.00	0.00	0.00	
9,800.00	91.74	270.13	7,235.37	432.15	-1,675.90	1,698.45	0.00	0.00	0.00	
9,900.00	91.74	270.13	7,232.33	432.37	-1,775.85	1,798.25	0.00	0.00	0.00	
10,000.00	91.74	270.13	7,229.28	432.59	-1,875.80	1,898.04	0.00	0.00	0.00	
10,100.00	91.74	270.13	7,226.24	432.81	-1,975.76	1,997.83	0.00	0.00	0.00	
10,200.00	91.74	270.13	7,223.20	433.03	-2,075.71	2,097.62	0.00	0.00	0.00	
10,300.00	91.74	270.13	7,220.16	433.25	-2,175.66	2,197.42	0.00	0.00	0.00	
10,400.00	91.74	270.13	7,217.12	433.47	-2,275.62	2,297.21	0.00	0.00	0.00	
10,500.00	91.74	270.13	7,214.08	433.69	-2,375.57	2,397.00	0.00	0.00	0.00	
10,600.00	91.74	270.13	7,211.03	433.91	-2,475.52	2,496.80	0.00	0.00	0.00	
10,700.00	91.74	270.13	7,207.99	434.13	-2,575.48	2,596.59	0.00	0.00	0.00	
10,800.00	91.74	270.13	7,204.95	434.35	-2,675.43	2,696.38	0.00	0.00	0.00	
10,900.00	91.74	270.13	7,201.91	434.57	-2,775.39	2,796.17	0.00	0.00	0.00	
11,000.00	91.74	270.13	7,198.87	434.79	-2,875.34	2,895.97	0.00	0.00	0.00	
11,100.00	91.74	270.13	7,195.82	435.01	-2,975.29	2,995.76	0.00	0.00	0.00	
11,200.00	91.74	270.13	7,192.78	435.23	-3,075.25	3,095.55	0.00	0.00	0.00	
11,300.00	91.74	270.13	7,189.74	435.46	-3,175.20	3,195.34	0.00	0.00	0.00	
11,400.00	91.74	270.13	7,186.70	435.68	-3,275.15	3,295.14	0.00	0.00	0.00	
11,500.00	91.74	270.13	7,183.66	435.90	-3,375.11	3,394.93	0.00	0.00	0.00	
11,600.00	91.74	270.13	7,180.62	436.12	-3,475.06	3,494.72	0.00	0.00	0.00	
11,700.00	91.74	270.13	7,177.57	436.34	-3,575.01	3,594.51	0.00	0.00	0.00	
11,800.00	91.74	270.13	7,174.53	436.56	-3,674.97	3,694.31	0.00	0.00	0.00	
11,900.00	91.74	270.13	7,171.49	436.78	-3,774.92	3,794.10	0.00	0.00	0.00	
12,000.00	91.74	270.13	7,168.45	437.00	-3,874.87	3,893.89	0.00	0.00	0.00	
12,100.00	91.74	270.13	7,165.41	437.22	-3,974.83	3,993.69	0.00	0.00	0.00	
12,200.00	91.74	270.13	7,162.36	437.44	-4,074.78	4,093.48	0.00	0.00	0.00	
12,300.00	91.74	270.13	7,159.32	437.66	-4,174.73	4,193.27	0.00	0.00	0.00	
12,400.00	91.74	270.13	7,156.28	437.88	-4,274.69	4,293.06	0.00	0.00	0.00	
12,500.00	91.74	270.13	7,153.24	438.10	-4,374.64	4,392.86	0.00	0.00	0.00	
12,600.00	91.74	270.13	7,150.20	438.32	-4,474.59	4,492.65	0.00	0.00	0.00	
12,700.00	91.74	270.13	7,147.16	438.54	-4,574.55	4,592.44	0.00	0.00	0.00	
12,800.00	91.74	270.13	7,144.11	438.76	-4,674.50	4,692.23	0.00	0.00	0.00	
12,900.00	91.74	270.13	7,141.07	438.98	-4,774.45	4,792.03	0.00	0.00	0.00	
13,000.00	91.74	270.13	7,138.03	439.20	-4,874.41	4,891.82	0.00	0.00	0.00	
13,100.00	91.74	270.13	7,134.99	439.42	-4,974.36	4,991.61	0.00	0.00	0.00	
13,200.00	91.74	270.13	7,131.95	439.64	-5,074.32	5,091.41	0.00	0.00	0.00	
13,300.00	91.74	270.13	7,128.90	439.86	-5,174.27	5,191.20	0.00	0.00	0.00	
13,400.00	91.74	270.13	7,125.86	440.08	-5,274.22	5,290.99	0.00	0.00	0.00	
13,500.00	91.74	270.13	7,122.82	440.30	-5,374.18	5,390.78	0.00	0.00	0.00	
13,600.00	91.74	270.13	7,119.78	440.52	-5,474.13	5,490.58	0.00	0.00	0.00	
13,700.00	91.74	270.13	7,116.74	440.74	-5,574.08	5,590.37	0.00	0.00	0.00	
13,800.00	91.74	270.13	7,113.69	440.96	-5,674.04	5,690.16	0.00	0.00	0.00	
13,900.00	91.74	270.13	7,110.65	441.18	-5,773.99	5,789.95	0.00	0.00	0.00	
14,000.00	91.74	270.13	7,107.61	441.40	-5,873.94	5,889.75	0.00	0.00	0.00	
14,100.00	91.74	270.13	7,104.57	441.62	-5,973.90	5,989.54	0.00	0.00	0.00	
14,200.00	91.74	270.13	7,101.53	441.84	-6,073.85	6,089.33	0.00	0.00	0.00	
14,300.00	91.74	270.13	7,098.49	442.06	-6,173.80	6,189.13	0.00	0.00	0.00	
14,400.00	91.74	270.13	7,095.44	442.28	-6,273.76	6,288.92	0.00	0.00	0.00	
14,500.00	91.74	270.13	7,092.40	442.50	-6,373.71	6,388.71	0.00	0.00	0.00	
14,600.00	91.74	270.13	7,089.36	442.72	-6,473.66	6,488.50	0.00	0.00	0.00	
14,700.00	91.74	270.13	7,086.32	442.94	-6,573.62	6,588.30	0.00	0.00	0.00	
14,800.00	91.74	270.13	7,083.28	443.16	-6,673.57	6,688.09	0.00	0.00	0.00	
14,900.00	91.74	270.13	7,080.23	443.38	-6,773.52	6,787.88	0.00	0.00	0.00	
15,000.00	91.74	270.13	7,077.19	443.60	-6,873.48	6,887.67	0.00	0.00	0.00	

Hewlett-Packard

Planning Report

Database:	EDM 5000.14 Single User Db	Local Co-ordinate Reference:	Well VOLT 33C-6-M
Company:	SRC ENERGY	TVD Reference:	RKB = 4' @ 4817.00usft (IKON 12)
Project:	WELD COUNTY (NAD83, TRUE NORTH)	MD Reference:	RKB = 4' @ 4817.00usft (IKON 12)
Site:	5N-66W-05 VOLT 19-5 PAD	North Reference:	True
Well:	VOLT 33C-6-M	Survey Calculation Method:	Minimum Curvature
Wellbore:	Wellbore #1		
Design:	Design #1		

Planned Survey										
Measured Depth (usft)	Inclination (°)	Azimuth (°)	Vertical Depth (usft)	+N/-S (usft)	+E/-W (usft)	Vertical Section (usft)	Dogleg Rate (°/100usft)	Build Rate (°/100usft)	Turn Rate (°/100usft)	
15,100.00	91.74	270.13	7,074.15	443.82	-6,973.43	6,987.47	0.00	0.00	0.00	
15,200.00	91.74	270.13	7,071.11	444.04	-7,073.38	7,087.26	0.00	0.00	0.00	
15,300.00	91.74	270.13	7,068.07	444.26	-7,173.34	7,187.05	0.00	0.00	0.00	
15,400.00	91.74	270.13	7,065.03	444.48	-7,273.29	7,286.85	0.00	0.00	0.00	
15,500.00	91.74	270.13	7,061.98	444.70	-7,373.25	7,386.64	0.00	0.00	0.00	
15,565.20	91.74	270.13	7,060.00	444.84	-7,438.41	7,451.70	0.00	0.00	0.00	
Bottom of Production @ 15565.20ft										
15,600.00	91.74	270.13	7,058.94	444.92	-7,473.20	7,486.43	0.00	0.00	0.00	
15,665.20	91.74	270.13	7,056.96	445.07	-7,538.36	7,551.49	0.00	0.00	0.00	
TD Well @ 15665.20ft										

Casing Points					
Measured Depth (usft)	Vertical Depth (usft)	Name		Casing Diameter (")	Hole Diameter (")
1,818.71	1,800.00	9 5/8"		9-5/8	13-1/2
7,773.83	7,297.00	Production Zone Top		5-1/2	8-1/2

Plan Annotations					
Measured Depth (usft)	Vertical Depth (usft)	Local Coordinates		Comment	
		+N/-S (usft)	+E/-W (usft)		
250.00	250.00	0.00	0.00	Begin Nudge @ 250.00ft	
749.00	746.48	15.39	40.53	Hold Tangent @ 749.00ft	
6,650.99	6,559.16	378.44	996.77	KOP @ 6650.99ft :: DLS = 9°/100'	
7,773.83	7,297.00	427.69	349.33	End Build @ 7773.83ft	
15,565.20	7,060.00	444.84	-7,438.41	Bottom of Production @ 15565.20ft	
15,665.20	7,056.96	445.07	-7,538.36	TD Well @ 15665.20ft	