



Kerr-McGee Oil & Gas Onshore LP

A subsidiary of Anadarko Petroleum Corporation

1099 18th Street
Denver, CO 80202
720-929-6000

February 28, 2019

Jeff Robbins
Director, Colorado Oil and Gas Conservation Commission
Department of Natural Resources
The Chancery Building
1120 Lincoln Street, Suite 801
Denver, CO 80203

Re: 30 Day Certification Letter - 318A.e

BARCLAY FARMS 20-8HZ (Doc No. 401807437)

Township 3 North, Range 66 West

Section 20: SESW

Unit Acreage: 400 Acres

Proposed Spacing Unit:

03N66W SEC 08: SESW;

03N66W SEC 17: E2W2;

03N66W SEC 20: E2W2;

03N66W SEC 29: NENW

Weld County, Colorado

Dear Director Robbins:

Kerr-McGee Oil and Gas Onshore LP ("KMG") hereby certifies that a thirty (30) day notice has been given by certified mail to all mineral owners in the proposed wellbore spacing unit. We have not received any objections to this spacing unit or location. KMG hereby respectfully requests approval of this well.

If you have any questions or issues regarding this permit, please contact me at (720) 929-3094.

Sincerely,

Kerr-McGee Oil and Gas Onshore LP

A handwritten signature in black ink, appearing to read 'John Piekara'.

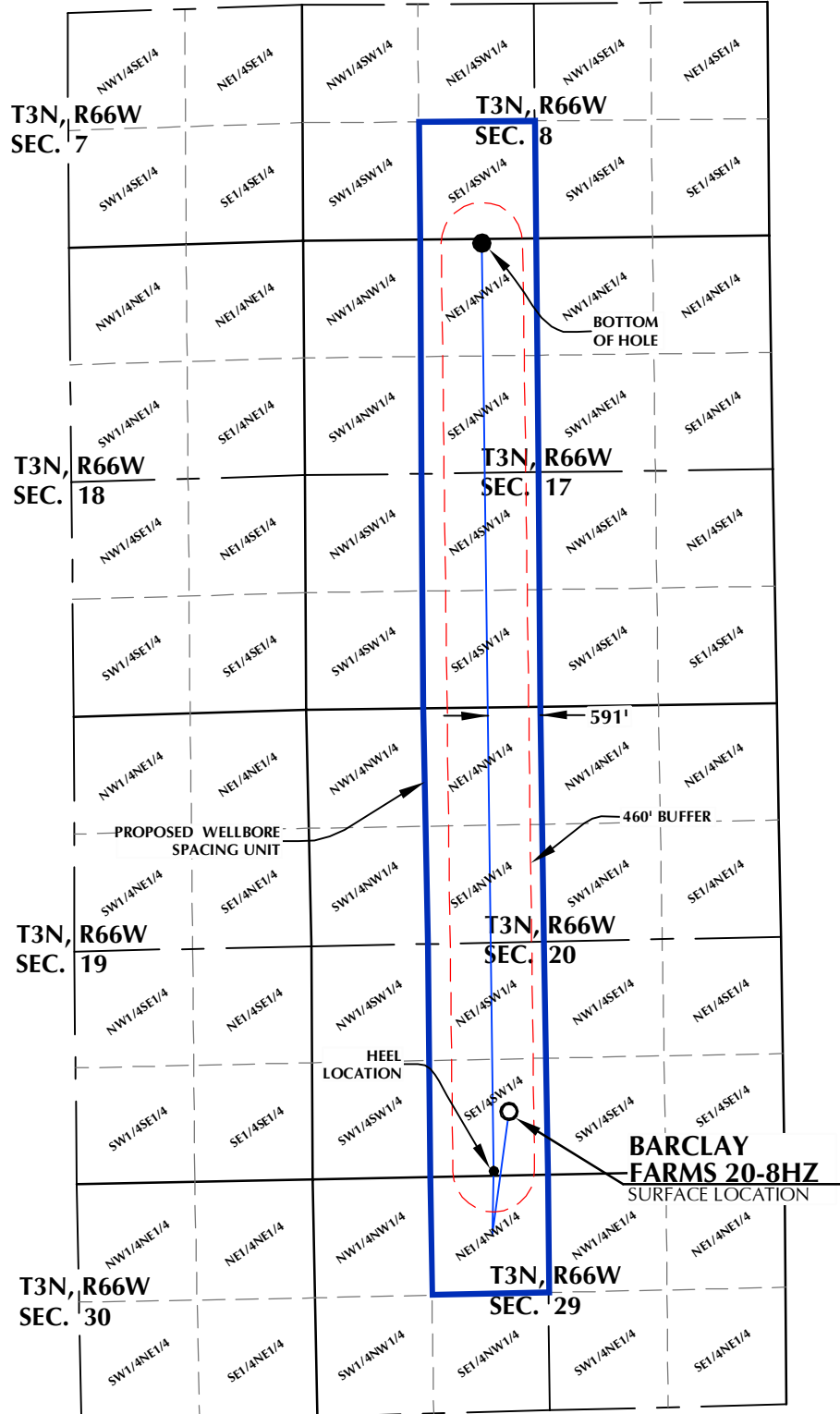
John Piekara
Sr. Regulatory Analyst

Enclosure

DISTANCE FROM COMPLETED
PORTION OF WELLBORE TO
NEAREST UNIT BOUNDARY= 591'

BARCLAY FARMS 20-8HZ WELLBORE SPACING UNIT

SURFACE LOCATION: NAD 83
GROUND ELEVATION= 4917.5'
LATITUDE= 40.205024°
LONGITUDE= -104.802723°
LATITUDE= 40°12'18.085"
LONGITUDE= -104°48'09.802"
HEEL LOCATION: NAD 83
LATITUDE= 40.203182°
LONGITUDE= -104.803361°
LATITUDE= 40°12'11.455"
LONGITUDE= -104°48'12.099"
BOTTOM HOLE LOCATION: NAD 83
LATITUDE= 40.231897°
LONGITUDE= -104.803543°
LATITUDE= 40°13'54.829"
LONGITUDE= -104°48'12.755"



NOTES:

1. DRAWING LATITUDE AND LONGITUDE COORDINATES ARE NAD 83 (2011)(EPOCH:2010).
2. ELEVATION BASED ON NAVD88 (GEOID12B).
3. BASIS OF BEARING DERIVED FROM COLORADO COORDINATE SYSTEM OF 1983 NORTH ZONE.
4. ALL MEASURED DISTANCES ARE GRID.
COMBINED SCALE FACTOR: .99972278 CALCULATED FROM THE W. 1/4 CORNER OF SECTION 21, T3N, R66W.

WELL PAD - BARCLAY FARMS 35-20HZ

BARCLAY FARMS 20-8HZ
WELLBORE SPACING UNIT
719' FSL & 2214' FWL SESW (SURFACE)
50' FSL & 2036' FWL SESW (HEEL)
LOCATED IN SECTION 20
50' FNL & 2011' FWL NENW (BOTTOM)
LOCATED IN SECTION 17
T3N, R66W, 6TH P.M.
WELD COUNTY, COLORADO

**Kerr-McGee Oil &
Gas Onshore L.P.**
1099 18th Street
Denver, Colorado 80202



CONSULTING, LLC

SHERIDAN OFFICE
1095 Saberton Avenue
Sheridan, Wyoming 82801
Phone 307-674-0609

LOVELAND OFFICE
6706 North Franklin Avenue
Loveland, Colorado 80538
Phone 970-776-4331

DRAFTED BY:	LMO	CHECKED BY:	RKF
DATE DRAFTED:	10/25/18	DATE SURVEYED:	9/26/18
REVISED:		FILE NAME:	18-95